



**COLORADO**

**Colorado Water  
Conservation Board**

Department of Natural Resources

1313 Sherman Street, Room 718  
Denver, CO 80203

July 25, 2016

Colorado Rio Grande Restoration Foundation  
Attn: Emma Regier, Coordinator  
623 Firth Street  
Alamosa, CO 81101

RE: Official Notice to Proceed – WSRF Grant – **POGG1 2017-268** –  
**Upper Rio Grande Assessment in the Rio Grande Basin**

Dear Emma,

This letter is to inform you that the purchase order to assist in the above WSRF grant project has been approved. The email purchase order serves as the original contracting documents.

With the executed purchase order (POGG1 2017-268) you are now able to proceed with the project and invoice the State of Colorado for costs incurred through your expiration date. Please provide the project name, POGG1 number, and basins when corresponding with or invoicing for your project. Upon receipt of your invoice(s), the State of Colorado will provide payment no later than 30 days after review and signed approval of the project manager.

If an extension to the project is necessary, a formal letter of request must be submitted to the project manager along with a proposed completion date **90 days** prior to the current expiration date. There will be no prior notice from the CWCB contract compliance staff informing the grantee that the project is approaching its deadline, therefore the grantee must monitor the completion progress accordingly.

If you have any questions or concerns regarding the project, please contact Craig Godbout, Project Manager at 303-866-3441 x3210 or at [craig.godbout5@state.co.us](mailto:craig.godbout5@state.co.us). You can contact me at 303-866-3441 ext. 3250 for invoicing and payment disbursement questions.

Thank you.

Sincerely,

**Doriann Vigil**  
**Program Assistant II**  
O 303-866-3441 ext. 3250  
1313 Sherman Street, Rm. 719, Denver, CO 80203  
[Dori.vigil@state.co.us](mailto:Dori.vigil@state.co.us) / [cwcb.state.co.com](http://cwcb.state.co.com)

Attachments





STATE OF COLORADO  
Department of Natural Resources

<b>ORDER</b>		<b>** IMPORTANT **</b>				
Number: POGG1 PDAA 201700000268		The order number and line number must appear on all invoices, packing slips, cartons and correspondence				
Date: 07/25/16						
Description: PDAA 2500 WSRA GRANT - UPPER RIO GRANDE ASSESSMENT		<b>BILL TO</b>				
Effective Date: 07/26/16      Expiration Date: 12/31/18		COLORADO WATER BOARD CONSERVATION 1313 SHERMAN STREET, ROOM 718 DENVER, CO 80203				
<b>BUYER</b>		<b>SHIP TO</b>				
Buyer:		COLORADO WATER BOARD CONSERVATION				
Email:		1313 SHERMAN STREET, ROOM 718 DENVER, CO 80203				
<b>VENDOR</b>		<b>SHIPPING INSTRUCTIONS</b>				
COLORADO RIO GRANDE RESTOR FNDTN 623 4TH ST ALAMOSA, CO 81101-2522		Delivery/Install Date:				
Contact: .		F.O.B: FOB Dest, Freight Allowed				
Phone: .		<b>VENDOR INSTRUCTIONS:</b>				
<b>Line Item</b>	<b>Commodity/Item Code</b>	<b>UOM</b>	<b>QTY</b>	<b>Unit Cost</b>	<b>Total Cost</b>	<b>MSDS Req.</b>
1	G1000		0	0.00	\$67,000.00	<input type="checkbox"/>
Description: PDAA 2500 WSRA GRANT - UPPER RIO GRANDE ASSESSMENT						
Service From: 07/26/16      Service To: 12/31/18						
<b>TERMS AND CONDITIONS</b>						
<a href="https://www.colorado.gov/osc/purchase-order-terms-conditions">https://www.colorado.gov/osc/purchase-order-terms-conditions</a>						
<b>DOCUMENT TOTAL = \$67,000.00</b>						

**Exhibit A**  
**Statement of Work**  
**Date: March 1, 2016**

**WATER ACTIVITY NAME – Upper Rio Grande Assessment**

**GRANT RECIPIENT – Colorado Rio Grande Restoration Foundation**

**FUNDING SOURCE – WSRA Rio Grande Basin Account**

**INTRODUCTION AND BACKGROUND**

The Upper Rio Grande Assessment (URGA) is a stakeholder driven watershed assessment that encompasses the Upper Rio Grande Basin, from the headwaters to the town of South Fork. The goals of the URGA are to assess the ecological condition of the mainstem of the Rio Grande, major tributaries, and upland ecosystems within the project area, identify causes of concern, and develop a list of prioritized projects to that will improve the function of uplands, and aquatic and the riparian ecosystems. The assessment will concurrently identify projects that involve infrastructure as related to recreational, environmental, agricultural, and municipal/industrial needs in the basin.

**OBJECTIVES**

The objectives of the URGA are to:

1. Assess the condition of the Upper Rio Grande, including major tributaries, from the headwaters to the town of South Fork by collecting data characterizing riparian habitat, aquatic habitat, geomorphology, recreation, flow regimes, water quality, adjacent uplands, and infrastructure.
2. Analyze and compile data into a comprehensive watershed assessment.
3. Identify causes of degradation and priority projects within the project area.

**TASKS**

**TASK 1 – Riparian Habitat Assessment**

Description of Task

Assess the condition of riparian habitat throughout project reach through site visits, targeted surveying and data collection. Determine the percent of vegetative cover in riparian areas and along streambanks, assess impacts to vegetation from fire, flooding, recreation, livestock grazing, and landuse activities. Establish trends, if possible.

Method/Procedure

A hired contractor will collect data to assess the condition of riparian habitat throughout the project reach.

Deliverables

Data relating to the condition of riparian habitat throughout the project area. Specific data will include percent of vegetative cover in riparian areas and along streambanks, species composition,

impacts to vegetation from fire, flooding, recreation, livestock grazing, and landuse activities and establish trends in riparian habitat condition. Data will be analyzed and incorporated into the overall assessment

## **TASK 2 – Geomorphology Assessment**

### Description of Task

Assess streambank stability throughout project area, with a focus on burned areas and areas of high recreation. Identify bed material and areas of sedimentation from high erosion, and categorize streams using basic Rosgen Stream Classification types. Measure floodplain function.

### Method/Procedure

A hired contractor will collect and use data to assess the geomorphology of the project area.

### Deliverable

Data relating to the geomorphology throughout the project area. Data will be analyzed and incorporated into the overall assessment

## **TASK 3 – Aquatic Habitat**

### Description of Task

Assess the condition of aquatic habitat and populations at shocking sites, Colorado Parks and Wildlife survey sites, and targeted survey areas.

### Method/Procedure

Project partners, with Trout Unlimited as the lead, will complete this task. Partners will complete macroinvertebrate sampling, fish shocking, and identify suitable habitat to support native fish populations. Utilize Existing data from CPW and RWEACT's Water Quality Study will be utilized and macroinvertebrate sampling will be paired with fish shocking.

### Deliverable

Data relating to the condition of aquatic habitat and populations at shocking sites and targeted survey areas. Specific data will include macroinvertebrate sampling, fish shocking, and habitat suitability analysis. Data will be analyzed and incorporated into the overall assessment.

## **TASK 4 – Recreation**

### Description of Task

Assess the environmental impacts and economic contribution of recreation in the Upper Rio Grande.

### Method/Procedure

A hired contractor will collect and use data to assess the effects of recreation in the project area. Existing USFS Forest Plan Assessment Data and CPW User Info will be used in this task.

### Deliverable

Data relating to high use recreation areas including rafting, fishing, hiking, horse riding, and OHV use. Data will be analyzed to prioritize improvements to recreational facilities to ensure sustainability and reduce environmental impacts from recreation. Additionally, economic contribution from river-based recreation data will be assessed and quantified.

## **TASK 5 – Flow Regimes**

### Description of Task

Assess the timing of flows on the Rio Grande Mainstem, Beaver Creek, the South Fork, and Clear Creek to maximize beneficial environmental and recreational impacts.

### Method/Procedure

Project partners, including Trout Unlimited, SLVID, DWR, SLVWCD, and CPW, will identify opportunities for retiming reservoir releases in order to maximize beneficial environmental and recreational impacts.

### Deliverable

Data relating to timing of flows in specified reaches of the Rio Grande and applicable tributaries. Data will be analyzed and incorporated into the overall assessment for tasks such as extending the boating season, improving spawning conditions, cooling rivers in hot spells, and flushing sediment from fire, within the operating constraints of irrigators and other entities that utilize storage water.

## **TASK 6 – Water Quality**

### Description of Task

Assess water quality impairments with a focus on streams impacted by human-influenced point or non-point sources, WQCC issues, and fire on Miners Creek, Willow Creek, and streams below reservoirs.

### Method/Procedure

Project partner, Willow Creek Reclamation Committee, will analyze existing WCRC and RWEACT data as well as collect data on pH levels, metals, contaminant, TSS, and TDS data to monitor impacts on water quality.

### Deliverable

Data on pH levels, metals, contaminant, TSS and TDS. Data will be analyzed and incorporated into the overall assessment of the project area.

## **TASK 7 – Adjacent Uplands**

### Description of Task

Assess the adjacent uplands in the entire project area.

### Method/Procedure

A hired contractor will use mapping, USFS Assessments, and ground truthing to identify landuse activities, ecological conditions, including fire (historic and potential), beetle kill, and livestock grazing, and infrastructure that influences riparian areas.

### Deliverable

Data on condition of adjacent uplands on all reaches, including analysis of current USFS Assessments and Burn and Beetle Kill layers. Data will be incorporated into the overall assessment.

## **TASK 8 – Infrastructure**

### Description of Task

Assess the impacts of infrastructure on recreation and aquatic/riparian condition on project area below wilderness.

### Method/Procedure

A hired contractor will use the existing data from the BAER Report and other assessments, and collect current data on bridges, roads, diversions and commercial/residential property. The contractor will assess this information

### Deliverable

Data on bridges, roads, diversions and commercial/residential property related to recreation and aquatic/riparian condition. Data will be incorporated into the overall assessment.

## **TASK 9 – Identify Causes of Degradation and Priority Projects**

### Description of Task

Assess the causes of degradation on all reaches in the project area.

### Method/Procedure

A hired contractor and the Project Partners will analyze data from all previous tasks to summarize the causes of current and future degradation. The Project Partners will use data to prioritize projects for implementation to improve the river health and show real ecological and/economic benefits.

### Deliverable

Synthesized data detailing current conditions causes of degradation, and prioritized projects in the Upper Rio Grande. Data will be presented in the final Upper Rio Grande Assessment Report.

## **TASK 10 – Project Administration**

### Description of Task:

Complete all necessary contracts, status reports, and internal and external documents. Ensure Tasks are completed within approved costs and timelines.

### Method/Procedure:

The RGHRP will administer the Upper Rio Grande Assessment. This includes completing contracts with the CWCB, project partners, and contractors; managing budgets and reimbursement requests; and completing reports. Additionally, the RGHRP will perform Project oversight; making certain implementation is timely and accurate.

### Deliverable:

All appropriate contracts, external and internal reports, and Project activities completed within planned period and anticipated costs.

**REPORTING AND FINAL DELIVERABLE**

Reporting: The applicant shall provide the CWCB a progress report every 6 months, beginning from the date of the executed contract. The progress report shall describe the completion or partial completion of the tasks identified in the statement of work including a description of any major issues that have occurred and any corrective action taken to address these issues.

Final Deliverable: At completion of the project, the applicant shall provide the CWCB a final report that summarizes the project and documents how the project was completed. This report may contain photographs, summaries of meetings and engineering reports/designs.

## BUDGET

Task	Description	Responsible Party	Total	Sources of Funds		
				CDPHE	RWEACT	RG Basin Account
1	Riparian Habitat	Contractor	\$32,250.00	\$ -	\$ -	\$32,250.00
2	Geomorphology	Contractor	\$23,250.00	\$ -	\$23,250.00	\$ -
3	Aquatic Habitat	TU	\$15,000.00	\$ -	\$ -	\$15,000.00
4	Recreation	Contractor	\$27,000.00	\$ -	\$27,000.00	\$ -
5	Flow Regimes	TU	\$4,000.00	\$ -	\$4,000.00	\$ -
6	Water Quality	WCRC	\$33,000.00	\$33,000.00	\$ -	\$ -
7	Adjacent Uplands	Contractor	\$15,500.00	\$ -	\$15,500.00	\$ -
8	Infrastructure	Contractor	\$24,000.00	\$ -	\$24,000.00	\$ -
9	Identify Causes of Degradation and Priority Projects	Contractor	\$10,000.00	\$ -	\$ -	\$10,000.00
10	Project Administration	RGHRP	\$16,000.00	\$ -	\$6,250.00	\$9,750
			<b>\$200,000.00</b>	<b>\$33,000.00</b>	<b>\$100,000.00</b>	<b>\$67,000.00</b>

## SCHEDULE

Task	Start Date	Finish Date
1 Riparian Habitat	July 26, 2016	July 31, 2017
2 Geomorphology	July 26, 2016	July 31, 2017
3 Aquatic Habitat	July 26, 2016	July 31, 2017
4 Recreation	July 26, 2016	July 31, 2017
5 Flow Regimes	July 26, 2016	July 31, 2017
6 Water Quality	July 26, 2016	July 31, 2017
7 Adjacent Uplands	July 26, 2016	July 31, 2017
8 Infrastructure	July 26, 2016	July 31, 2017
9 Identify Causes of Degradation and Priority Projects	July 26, 2016	July 31, 2017
10 Project Administration	July 26, 2016	November 30, 2018

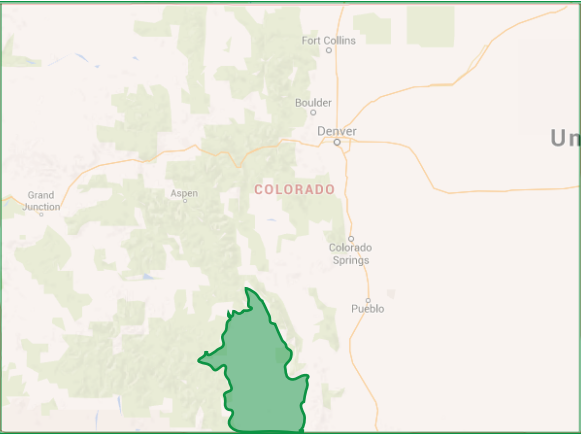
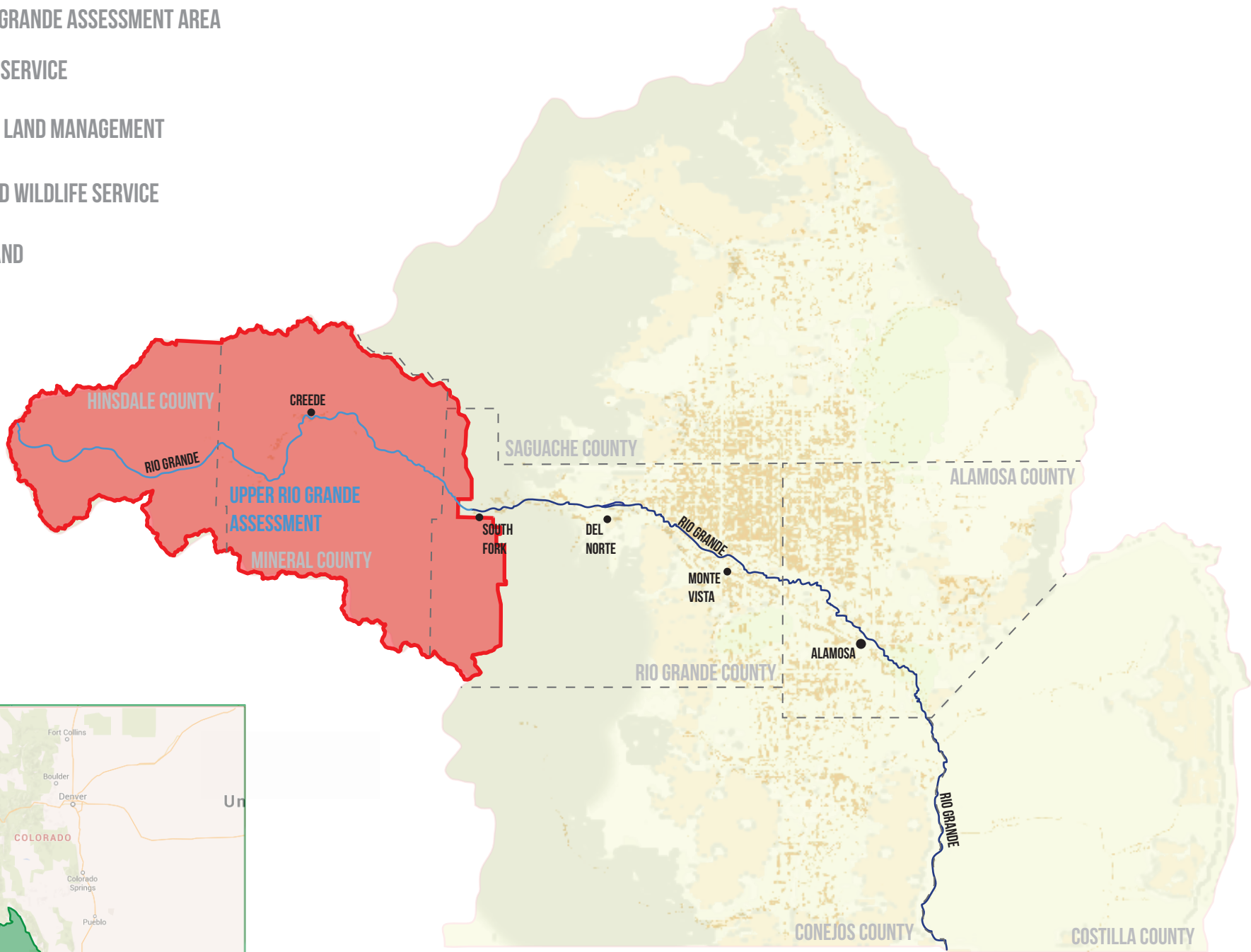
## PAYMENT

Payment will be made based on actual expenditures and invoicing by the applicant. Invoices from any other entity (i.e. subcontractors) cannot be processed by the State. The request for payment must



include a description of the work accomplished by major task, and estimate of the percent completion for individual tasks and the entire water activity in relation to the percentage of budget spent, identification of any major issues and proposed or implemented corrective actions. The last 5 percent of the entire water activity budget will be withheld until final project/water activity documentation is completed. All products, data and information developed as a result of this grant must be provided to the CWCBC in hard copy and electronic format as part of the project documentation. This information will in turn be made widely available to Basin Roundtables and the general public and help promote the development of a common technical platform.

- UPPER RIO GRANDE ASSESSMENT AREA
- US FOREST SERVICE
- BUREAU OF LAND MANAGEMENT
- US FISH AND WILDLIFE SERVICE
- PRIVATE LAND
- WELL



SAN LUIS VALLEY, CO

RIO GRANDE BASIN WATERSHED

Exhibit B. Maps – Figure 1

# UPPER RIO GRANDE ASSESSMENT

