



## 2010 Land Budget Overview

### Platte River Recovery Implementation Program

For More Information Contact: Jerry F. Kenny, [kennyj@headwaterscorp.com](mailto:kennyj@headwaterscorp.com), (308) 237-5728

#### 2010 Budget Overview by Complex

Total 2010 Work Per Complex	Estimated Expenditure	Actual Expenditure	Estimated Income	Actual Income
Plum Creek "Complex"	\$172,000	\$229,192	\$0	\$5,318
Cottonwood Ranch Complex	\$1,294,300	\$765,472	\$0	\$19,905
Elm Creek Complex	\$381,000	\$331,923	\$6,900	\$5,946
Fort Kearny Complex	\$281,500	\$286,330	\$10,200	\$135,312
<b>Total</b>	<b>\$2,128,800</b>	<b>\$1,612,917</b>	<b>\$17,100</b>	<b>\$171,799</b>

#### 2010 Budget Overview by Budget Line Item

Budget Line Item	Description	Estimated Expenditure	Actual Expenditure
LP-2	Adaptive Management Species Habitat Actions	\$1,070,000	\$693,385
LP-4	Property Maintenance & Agricultural Operations	\$578,800	\$700,245 <sup>1</sup>
LP-5	Construction of Bridge over North Channel	\$250,000	TBD
PD-15	Adaptive Management Action USACE Section 404 Permitting	\$30,000	\$20,000
PD-19	Flow Consolidation Management Experiment	\$200,000	\$199,287
<b>Total</b>		<b>\$2,128,800</b>	<b>\$1,612,917</b>

<sup>1</sup> Approximately \$514,316 or 73% of the LP-4 Budget Line Item total is considered capital costs.



**PLATTE RIVER**  
RECOVERY IMPLEMENTATION PROGRAM

Page Intentionally Left Blank



## 2010 Plum Creek Complex Annual Work Report

### Platte River Recovery Implementation Program

For More Information Contact: Jerry F. Kenny, [kennyj@headwaterscorp.com](mailto:kennyj@headwaterscorp.com), (308) 237-5728

---

#### General Priorities

- **Good Neighbor Policy** – *Conducted all actions in accordance with Program's good neighbor policy. Completed a land trade with landowner on South side to adjust property boundaries to accommodate his pivot being able to make a full swing without entering Program property.*
  - **Complex-Level Planning** – *Deferred the development of a Complex Restoration and Management Plan pending completion of the Sediment Augmentation feasibility study.*
- 

#### Species Habitat Priorities

- **Improve Target Species Sand and Water Habitat** – *Controlled in-channel vegetation and rehabilitation of tern and plover OCSW nesting habitat on large sandpit.*
  - **Protecting Other Species of Concern** – *Conducted Platte River caddis fly (PRCF) and river otter surveys in which neither were present on the tract at the time of the survey.*
- 

#### Operations and Maintenance Priorities

- **Basic Property Maintenance Obligations and Needs** – *Fulfilled basic property ownership obligations and needs including boundary fence signage, residence removal, lodge and Quonset maintenance, road maintenance, and noxious weed control.*
  - **Agricultural Operations** – *Completed cropland conversion to grassland, invasive tree and brush removal, and replaced the southern property boundary fence.*
-

---

**Priority Area: General**

**Item(s): Complex Land Interest and Complex-Level Planning**

No.	Activities for 2010	Budget Line Item	Completed	Cost (Estimated)	Actual Cost
PC1	Initiate complex-level planning effort following completion of acquisition of CNPPID Cook Property.	N/A	NO <sup>1</sup>	N/A	N/A
PC2	Coordination of Program land actions with neighboring landowners	N/A	YES	N/A	N/A
PC3	Coordinate with NPPD to identify and mitigate potential impacts to leased NPPD nesting islands	N/A	YES	N/A	N/A

<sup>1</sup> Deferred the development of a Complex Restoration and Management Plan pending completion of the Sediment Augmentation feasibility study.

**Priority Area: Species Habitat**

**Item(s): Improve Target Species Sand and Water Habitat**

No.	Activities for 2010	Budget Line Item	Completed	Cost (Estimated)	Actual Cost
PC4	Sandpit nesting habitat rehabilitation engineering design, permitting and bidding	N/A	YES	N/A	N/A
PC5	Sandpit nesting rehabilitation construction including tree clearing and peninsula clearing, grubbing and earthwork	LP-4	YES	\$37,000	\$19,893 <sup>1</sup>
PC6	In-channel vegetation control including woody vegetation.	LP-4	YES	\$5,000	\$15,825

<sup>1</sup> Cost includes contractor charge for mobilization and demobilization.

---

**Priority Area: Species Habitat**

**Item(s): Other Species of Concern**

No.	Activities for 2010	Budget Line Item	Completed	Cost (Estimated)	Actual Cost
PC7	Habitat and species surveys on properties where work will occur	N/A	YES	N/A	N/A
PC8	Coordination with USFWS and NGPC to identify and mitigate potential impacts associated with 2010 land activities	N/A	YES	N/A	N/A

**Priority Area: Operations and Maintenance**

**Item(s): Basic Property Maintenance Obligations and Needs**

No.	Activities for 2010	Budget Line Item	Completed	Cost (Estimated)	Actual Cost
PC9	Boundary signage	LP-4	YES	\$500	\$250
PC10	Fence and road maintenance	LP-4	YES	\$3,000	\$459
PC11	Removal of residence	LP-4	YES	\$5,000	\$4,855 <sup>1</sup>
PC12	Lodge and Quonset repairs/upgrades and utilities	LP-4	YES	\$30,000	\$54,556
PC13	Noxious weed control	LP-4	YES	\$5,000	\$1,000

<sup>1</sup> Includes costs for culvert replacement in entry road and grain bin disposal at Quonset.

---

**Priority Area: Operations and Maintenance****Item(s): Agricultural Operations**

No.	Activities for 2010	Budget Line Item	Completed	Cost (Estimated)	Actual Cost
PC14	Cropland conversion to grassland	LP-4	YES	\$15,000	\$15,114
PC15	Interior livestock fencing	LP-4	YES <sup>1</sup>	\$20,000	\$12,624
PC16	Phase I invasive tree/understory clearing in grazing areas	LP-4	YES	\$14,000	\$35,563

<sup>1</sup>The fence along southern boundary was replaced upon completion of the land trade with neighboring landowner.

**Priority Area: Unplanned Expenses**

Tract Num	Activities in 2010	Item(s)	Budget Line Item	Cost
2009003	Survey work	General	LP-4	\$1,361
2009003	Applied pre-emergent & soil sterilant to bare sand nesting areas	Species Habitat	LP-4	\$1,965
2009003	Skid steer with mower rental	Operations and Maintenance	LP-4	\$377
2009003	Prescribed burning services	Operations and Maintenance	LP-4	\$725
2009003	Grain bin servicing including electrical	Operations and Maintenance	LP-4	\$4,948
2009003	Automatic gate installation including electrical & concrete	Operations and Maintenance	LP-4	\$24,247
2009003	Shop supplies	Operations and Maintenance	LP-4	\$2,157
2009003	Lodge supplies	Operations and Maintenance	LP-4	\$1,712
2009003	Paddle scraper work on nesting area	Species Habitat	LP-2	\$7,125
2009003	Roller packer work on nesting area	Species Habitat	LP-2	\$3,988
2009003	Water quality tests	Species Habitat	LP-2	\$4,500
2009003	Dock and retaining wall removal and beach	Operations and Maintenance	LP-4	\$15,300

---

**Priority Area: *New Property Expenses***

<b>Tract Num</b>	<b>Activities in 2010</b>	<b>Item(s)</b>	<b>Budget Line Item</b>	<b>Cost</b>
2009007	Noxious weed control	Operations and Maintenance	LP-4	\$500
2009007	Annual energy charge for electrical meter	Operations and Maintenance	LP-4	\$148

---

## 2010 Plum Creek Complex Expense Summary

### *2010 Expenditures by Program Budget Line Item*

Priority Area	Item	Budget Line Item	Estimated Expenditure	2010 Expenditure
Species Habitat	Target Species Sand and Water Habitat	LP-4	\$42,000	\$35,718
Operations and Maintenance	Property Maintenance Obligations and Agricultural Operations	LP-4	\$92,500	\$124,421
<b>Total</b>			<b>\$134,500</b>	<b>\$160,139</b>
Species Habitat	Unplanned Property Expense	LP-2	\$0	\$15,613
Operations and Maintenance	Unplanned Property Expense	LP-4	\$0	\$52,792
Operations and Maintenance	New Property Expense	LP-4	\$37,500 <sup>1</sup>	\$648
<b>Subtotal</b>			<b>\$37,500</b>	<b>\$69,053<sup>2</sup></b>
<b>Total</b>			<b>\$172,000</b>	<b>\$229,192<sup>3</sup></b>

<sup>1</sup> \$225,000 was identified in the 2010 budget for “new” properties. There were 6 new additions to Program properties and the Plum Creek Complex had 1 addition in 2010.

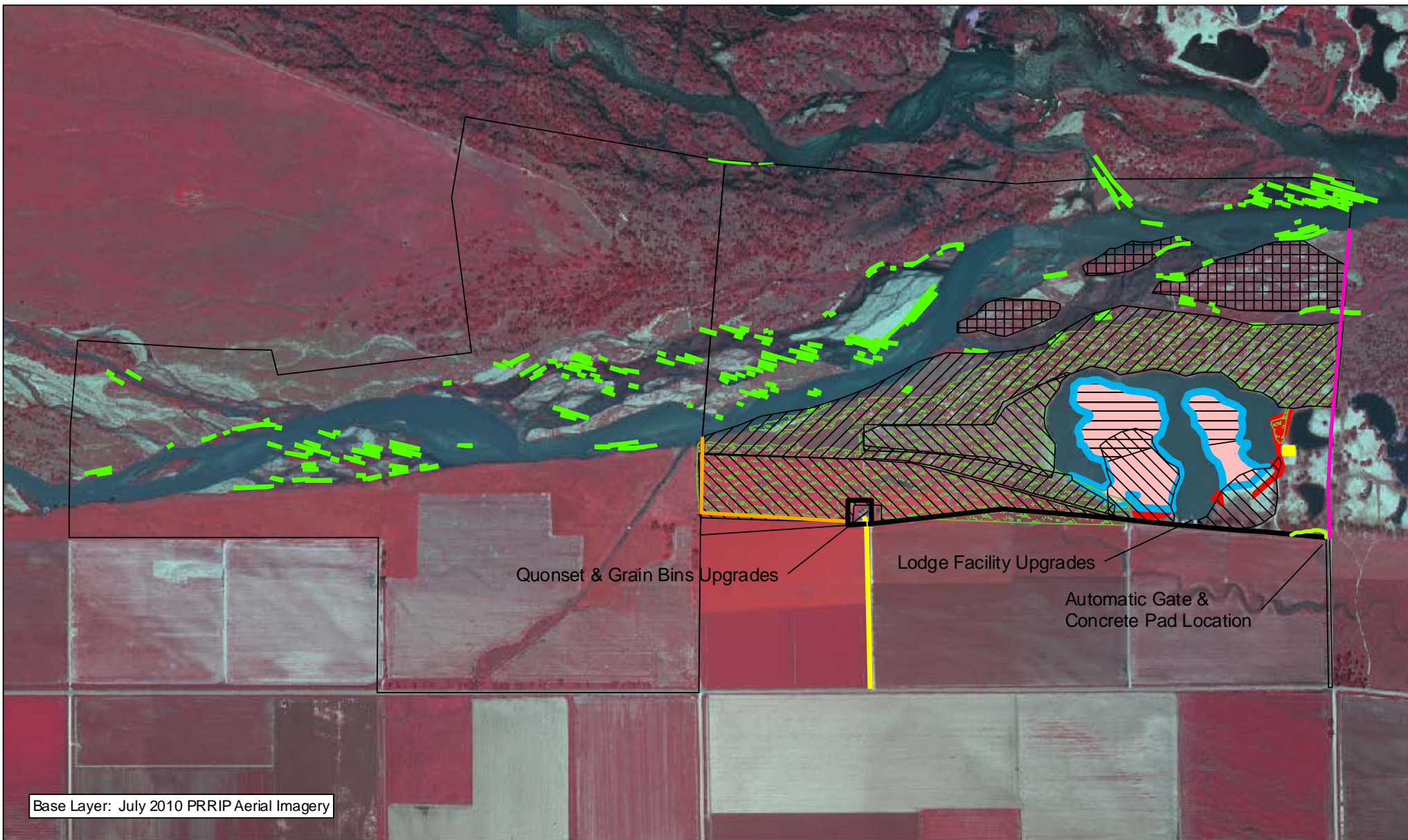
<sup>2</sup> Property tax expenses are not reported in annual work reports.

<sup>3</sup> Approximately \$201,568 or 94% of the LP-4 Budget Line Item total is considered capital costs.

### *2010 Revenues to Program*

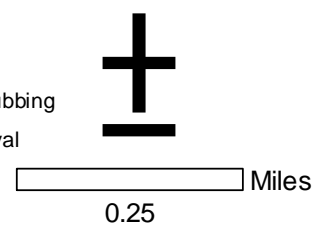
Priority Area	Item	Income
Operations and Maintenance	Trailer House disposal	\$1,500
Operations and Maintenance	Tract 2009007 Cropland rent	\$3,818
<b>Total</b>		<b>\$5,318</b>





### Legend

- |                                  |                           |                            |
|----------------------------------|---------------------------|----------------------------|
| Property Boundary                | Sandpit Clear & Grub      | Prescribed Fire            |
| Barbwire Fence Construction      | Aboveground Tree Clearing | Roller Packing             |
| Fence Removal                    | Building Removal          | Tree Clearing and Grubbing |
| Fence Repair                     | Clear & Smooth            | Individual Tree Removal    |
| Underground Primary Electrical   | Grass Seeding             |                            |
| Underground Secondary Electrical | Phragmites Spraying-PVWMA |                            |



### PLUM CREEK COMPLEX FY 2010 ACTIVITIES

Date: 1/31/2011  
By: TRT

Figure 1



**PLATTE RIVER**  
RECOVERY IMPLEMENTATION PROGRAM

Page Intentionally Left Blank



## 2010 Cottonwood Ranch Complex Work Report

### Platte River Recovery Implementation Program

For More Information Contact: Jerry F. Kenny, [kennyj@headwaterscorp.com](mailto:kennyj@headwaterscorp.com), (308) 237-5728

---

#### General Activities

- **Good Neighbor Policy** – *In 2010, there was significant coordination with neighboring property owners.*
  - **Complex-Level Planning** – *Complex Restoration and Management Plan was drafted and is currently before the Land Advisory Committee for review and approval.*
- 

#### Adaptive Management Activities

- **Flow Consolidation** – *Contracted for flow consolidation conceptual design project. Technical analysis is ongoing and expected to conclude in the first quarter of 2011.*
  - **Off-Channel Tern and Plover Nesting Habitat** – *Construction of 40-acre OCSW nesting habitat complex is ongoing and is scheduled for completion by March 1, 2011.*
- 

#### Species Habitat Activities

- **Improve Target Species Sand and Water Habitat** – *Completed construction of 2010 habitat enhancement project in November. Activities included channel widening (approx. 40,000 CY material moved), burning and burying of tree piles in 2009 tree clearing area, and preparation of that area for seeding. Tern and plover nesting island herbicide application was also conducted during the spring of 2010.*
  - **Protecting Other Species of Concern** – *Program staff consulted with the USFWS and NGPC to ensure that 2010 work would not negatively impact Program target species or other species of concern.*
-

---

## Operations and Maintenance Activities

- **Basic Property Maintenance Obligations and Needs** – *The Program fulfilled basic property ownership/management obligations including road/fence maintenance and noxious weed control. Program contractors completed engineering design for a new bridge over Spring Creek. That project will be bid in January and construction will be complete by May 2011.*
- **Agricultural Operations** – *The Program conducted a prescribed burn on a portion of Tract 2008001 south of the main channel. The burn was originally planned to occur on Lloyd Island but the location was moved due to a grass shortage that required that grazing on Lloyd Island not be deferred in 2010.*

---

## New Property Activities

- **Basic Property Maintenance Obligations and Needs** – *The Program fulfilled basic property ownership/management obligations including road/fence maintenance and noxious weed control on Tracts 2009006 and 2010001. The Program worked with the neighboring landowner on the west side of Tract 2009006 to replace the boundary fence on the established surveyed boundary.*
  - **Agricultural Operations** – *Managed crop lease and grazing lease on tract 2010001.*
-

---

**Priority Area:** *General*

**Item(s):** *Complex Land Interest and Good Neighbor Policy*

<b>No.</b>	<b>Activities for 2010</b>	<b>Budget Line Item</b>	<b>Completed</b>	<b>Cost (Estimated)</b>	<b>Actual Cost</b>
CR1	Initiate complex-level planning effort following completion of acquisition of PRWCT property.	N/A	YES	N/A	N/A
CR2	Coordination of Program land actions with neighboring landowners	N/A	YES	N/A	N/A

**Priority Area:** *Adaptive Management*

**Item(s):** *Flow Consolidation*

	<b>Activities for 2010</b>	<b>Budget Line Item</b>	<b>Completed</b>	<b>Cost (Estimated)</b>	<b>Actual Cost</b>
CR3	Flow consolidation conceptual design project	PD-19	ONGOING	\$200,000	\$199,287

**Priority Area:** *Adaptive Management*

**Item(s):** *Off-Channel Tern and Plover Nesting Habitat*

	<b>Activities for 2010</b>	<b>Budget Line Item</b>	<b>Completed</b>	<b>Cost (Estimated)</b>	<b>Actual Cost</b>
CR4	Engineering design, permitting and bidding	N/A	YES	N/A	N/A
CR5	Construction of OCSW habitat	LP-2	ONGOING <sup>1</sup>	\$600,000	\$437,959

<sup>1</sup> Completion by March 1, 2011.

---

**Priority Area:** *Species Habitat*

**Item(s):** *Target Species Sand and Water Habitat Improvements*

Activities for 2010		Budget Line Item	Completed	Cost (Estimated)	Actual Cost
CR6	Design, permitting (including USACE 404) and bidding of channel widening activities	N/A	YES	N/A	N/A
CR7	Channel widening construction	LP-2	YES	\$120,000	\$72,125
CR8	Pre-emergent herbicide application on tern and plover nesting habitat and cleared areas	LP-4	YES	\$8,300	\$1,411
CR9	Channel disking	LP-4	NO <sup>1</sup>	\$5,000	\$0

<sup>1</sup> Not necessary due to natural high flows.

**Priority Area:** *Species Habitat*

**Item(s):** *Other Species of Concern*

Activities for 2010		Budget Line Item	Completed	Cost (Estimated)	Actual Cost
CR10	Habitat and species surveys on properties where work will occur	N/A	YES	N/A	N/A
CR11	Coordination with NPPD, USFWS and NGPC to identify and mitigate potential impacts associated with 2010 land activities	N/A	YES	N/A	N/A

---

**Priority Area: Operations and Maintenance**

**Item(s): Basic Property Maintenance Obligations and Needs**

Activities for 2010		Budget Line Item	Completed	Cost (Estimated)	Actual Cost
CR12	Construction of bridge over North Channel	LP-5	ONGOING <sup>1</sup>	\$250,000	TBD
CR13	Boundary fence and road maintenance	LP-4	NO <sup>2</sup>	\$1,000	\$0
CR14	Noxious weed control	LP-4	YES	\$20,000	\$4,280

<sup>1</sup> Solicitation for bids will be advertised in January 2011. Construction is scheduled to be complete by mid 2011.

<sup>2</sup> No road or fence maintenance identified.

**Priority Area: Operations and Maintenance**

**Item(s): Agricultural Operations**

Activities for 2010		Budget Line Item	Completed	Cost (Estimated)	Actual Cost
CR15	Lloyd Island prescribed burn	LP-4	YES <sup>1</sup>	\$10,000	\$4,770
CR16	Exclusionary fencing of Lloyd Island and tern and plover nesting habitat	LP-4	NO <sup>2</sup>	\$5,000	\$0

<sup>1</sup> Prescribed burn location moved to CWR NE & NW ¼ sections due to lack of fine fuel on Lloyd Island as a result of extended grazing in the fall of 2009 by grazing tenant.

<sup>2</sup> Exclusionary fencing was not necessary due to the lack of nesting.

---

**Priority Area: *Unplanned Expenses***

Tract Num	Activities in 2010	Item(s)	Budget Line Item	Cost
2008002	Soil Testing	Agricultural Operations	LP-4	\$98

**Priority Area: *New Property Expenses***

Tract Num	Activities in 2010	Item(s)	Budget Line Item	Cost
2009006	Survey work	General	LP-4	\$652
2009006	New construction of west fence on property boundary (including tree clearing)	Operations and Maintenance	LP-4	\$38,195
2010001	Soil Testing	Agricultural Operations	LP-4	\$98
2010001	Weed control	Operations and Maintenance	LP-4	\$650
2010001	Survey work	General	LP-4	\$4,248
2010001	Crop-Share Farming Inputs	Agricultural Operations	LP-4	\$1,699 <sup>1</sup>

<sup>1</sup> Cost includes 1/3 of total cost of production.



## 2010 Cottonwood Ranch Complex Expense Summary

### 2010 Expenditures by Program Budget Line Item

Priority Area	Item	Budget Line Item	Estimated Expenditure	2010 Expenditure
Adaptive Management	Flow Consolidation Conceptual Design	PD-19	\$200,000	\$199,287
<b>Subtotal</b>			<b>\$200,000</b>	<b>\$199,287</b>
Adaptive Management	Off-Channel Tern and Plover Nesting	LP-2	\$600,000	\$437,959
Species Habitat	Channel Widening Construction	LP-2	\$120,000	\$72,125
<b>Subtotal</b>			<b>\$720,000</b>	<b>\$510,084</b>
Species Habitat	Pre-Emergent Herbicide and Discing	LP-4	\$13,300	\$1,411
Operations and Maintenance	Property Maintenance Obligations	LP-4	\$21,000	\$4,280
Operations and Maintenance	Agricultural Operations	LP-4	\$15,000	\$4,770
<b>Subtotal</b>			<b>\$49,300</b>	<b>\$10,461</b>
Operations and Maintenance	North Channel Bridge Construction	LP-5	\$250,000	\$0
<b>Subtotal</b>			<b>\$250,000</b>	<b>\$0</b>
<b>Total</b>			<b>\$1,219,300</b>	<b>\$719,832</b>
Operations and Maintenance	Unplanned Property Expense	LP-4	\$0	\$98
Operations and Maintenance	New Property Expense	LP-4	\$75,000 <sup>1</sup>	\$45,542
<b>Subtotal</b>			<b>\$75,000</b>	<b>\$45,640<sup>2,3</sup></b>
<b>Total</b>			<b>\$1,294,300</b>	<b>\$765,472</b>

<sup>1</sup> \$225,000 was identified in the 2010 budget for “new” properties. There were 6 new additions to Program properties and the Cottonwood Ranch Complex had 2 additions in 2010.

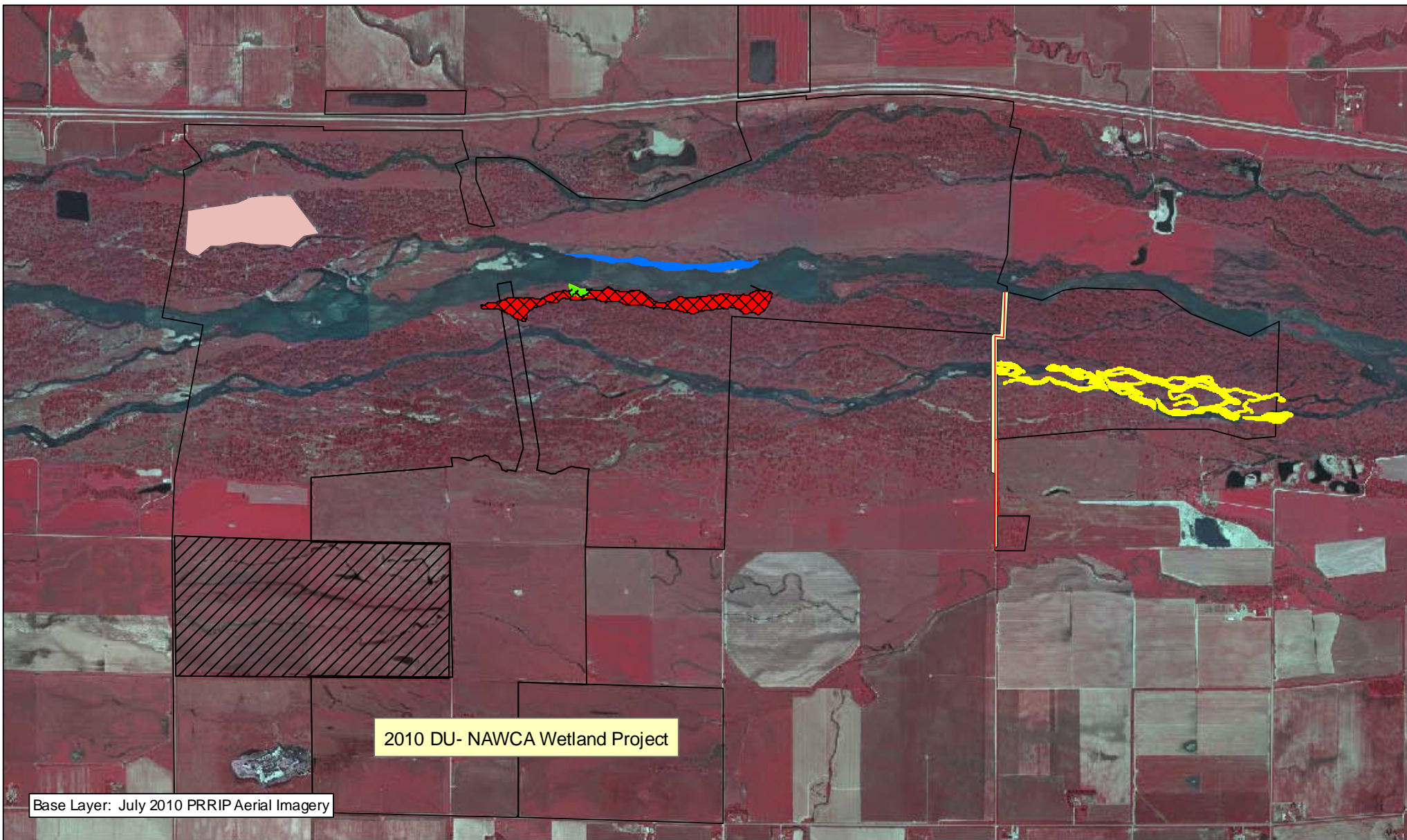
<sup>2</sup> Property tax expenses are not reported in annual work reports and property taxes for Tract 2008002 are the responsibility of the owner.

---

<sup>3</sup> Approximately \$38,196 or 68% of the LP-4 Budget Line Item total is considered capital costs.

***2010 Revenues to Program***

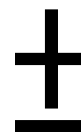
Priority Area	Item	Actual Income
Agricultural Operations	Tract 2008002	\$1,221
Agricultural Operations	Tract 2010001 Grazing Lease	\$14,660
Agricultural Operations	Tract 2010001 Crop share	\$5,245
	<b>Total</b>	<b>\$21,126</b>



PLATTE RIVER  
RECOVERY IMPLEMENTATION PROGRAM

### Legend

- |                             |                                  |
|-----------------------------|----------------------------------|
| Property Boundary           | Herbicide & Shredding            |
| Barbwire Fence Construction | In-Channel Grading/ Excavation   |
| Burning Tree Piles          | Off Channel Sand & Water Habitat |
| Clear & Grub                | Prescribed Fire                  |
| Disking                     | Tree Clearing                    |



Miles

1

## COTTONWOOD RANCH COMPLEX - FY 2010 ACTIVITIES

Date: 1/31/2011  
By: TRT

Figure 1



**PLATTE RIVER**  
RECOVERY IMPLEMENTATION PROGRAM

Page Intentionally Left Blank



## 2010 Elm Creek Complex Annual Work Report

### Platte River Recovery Implementation Program

For More Information Contact: Jerry F. Kenny, [kennyj@headwaterscorp.com](mailto:kennyj@headwaterscorp.com), (308) 237-5728

---

#### General Activities

- **Complex Land Interest** - Executed management agreements with three conservation and three private landowners that allow the Program to implement in-channel construction, maintenance and research/monitoring activities along four miles of channel.
  - **Good Neighbor Policy** – Coordinated with area landowners to provide information about Program actions and ensure that activities were conducted in accordance with Program’s good neighbor policy.
- 

#### Adaptive Management Activities

- **Tern and Plover Riverine Habitat Experiment** – Designed riverine habitat experiment that included forest clearing to improve unobstructed view widths, removal of in-channel vegetation, and construction of tern and plover nesting islands. All activities except nesting island construction were completed. The USACE would not issue a nationwide Section 404 permit for nesting islands. The Program is coordinating with the USACE to revise island design in hopes of constructing islands in the spring of 2011.
  - **Whooping Crane Riverine Habitat Experiment** – Designed and implemented vegetation clearing to provide a range of unobstructed view widths as part of the riverine habitat experiment.
  - **Riverine versus Off-Channel Tern and Plover Nesting** – Monitored tern and plover use and productivity on Program riverine habitat and nearby off-channel sand & water nesting habitat including NPPD’s Blue Hole sandpit and Johnson Sandpits.
  - **Flow-Sediment-Mechanical (FSM) Experiment** – Removed in-channel vegetation upstream of the Kearney Canal diversion in preparation for implementation of FSM “proof of concept” implementation design and monitoring activities in 2011.
-

---

## Species Habitat Activities

- **Improve Target Species Sand and Water Habitat** – Increased available sand and water habitat for species through design and construction of tern and plover, whooping crane and FSM experiments, which created habitat that meets Program criteria.
  - **Protecting Other Species of Concern** – Identified presence of Platte River caddisfly population on Tract 2009005. Modified riverine habitat experiment to protect population during construction.
- 

## Operations and Maintenance Activities

- **Basic Property Maintenance Obligations and Needs** – Fulfilled basic property ownership obligations and needs on Tracts 2009002 and 2009005 including repairs and upgrades to the building on Tract 2009002 and infrastructure improvements on Tract 2009005.
  - **Agricultural Operations** – Managed crop lease on Tract 2009002 and grazing lease on tract 2009005. Removed invasive tree infestations on grassland areas of Tract 2009005 to prevent further degradation of meadow areas.
-

---

**Priority Area: General****Item(s): Complex Land Interest and Good Neighbor Policy**

No.	Activities for 2010	Budget Line Item	Completed	Cost (Estimated)	Actual Cost
EC1	Execution of management agreements w/ other conservation and private landowners for in-channel research and habitat construction activities	N/A	YES	N/A	N/A
EC2	Coordination of Program land actions with neighboring landowners	N/A	YES	N/A	N/A

**Priority Area: Adaptive Management****Item(s): Tern, Plover and Whooping Crane Riverine Habitat Experiments**

	Activities for 2010	Budget Line Item	Completed	Cost (Estimated)	Actual Cost
EC3	Experimental and Engineering design, permitting and bidding (budget for permitting)	PD-15	ONGOING <sup>1</sup>	\$10,000	\$10,000
EC4	Construction for habitat selection experiments including tree and vegetation clearing and nesting island construction	LP-2	ONGOING <sup>1</sup>	\$140,000	\$159,585

<sup>1</sup> Nesting islands not constructed due to USACE Section 404 permit issues.

---

**Priority Area: Adaptive Management****Item(s): Flow-Sediment-Mechanical Experiment**

Activities for 2010		Budget Line Item	Completed	Cost (Estimated)	Actual Cost
EC5	Experimental and Engineering design, permitting and bidding (budget for permitting)	PD-15	ONGOING <sup>1</sup>	\$10,000	\$10,000
EC6	Construction for FSM experiment including vegetation clearing and channel leveling	LP-2	YES <sup>2</sup>	\$110,000	\$6,350

<sup>1</sup> Management experiment implementation design to be completed in 2011.

<sup>2</sup> In-channel construction limited to cross-disking of islands to remove vegetation.

**Priority Area: Species Habitat****Item(s): Other Species of Concern**

Activities for 2010		Budget Line Item	Completed	Cost (Estimated)	Actual Cost
EC7	Habitat and species surveys on properties where work will occur	N/A	YES	N/A	N/A
EC8	Coordination with USFWS and NGPC to identify and mitigate potential impacts associated with 2010 land activities	N/A	YES	N/A	N/A



---

**Priority Area: Operations and Maintenance****Item(s): Basic Property Maintenance Obligations and Needs**

Activities for 2010		Budget Line Item	Completed	Cost (Estimated)	Actual Cost
EC9	Tract 2009002 boundary signage	LP-4	NO	\$500	\$0
EC10	Tract 2009002 fence and road maintenance	LP-4	NO	\$1,000	\$0
EC11	Tract 2009002 building utilities and maintenance	LP-4	YES	\$3,000	\$4,273
EC12	Tract 2009002 invasive tree and brush removal	LP-4	YES	\$6,000	\$16,440
EC13	Tract 2009002 noxious weed control	LP-4	Yes <sup>1</sup>	\$5,000	\$0
EC14	Tract 2009005 boundary tree clearing, fence reconstruction and signage	LP-4	YES	\$45,000	\$21,545
EC15	Tract 2009005 farmstead demolition and burial	LP-4	YES	\$15,000	\$6,225 <sup>2</sup>
EC16	Tract 2009005 noxious weed control	LP-4	YES <sup>1</sup>	\$5,000	\$0

<sup>1</sup> Work was conducted by Land Manager.

<sup>2</sup> Costs include removal and disposal of asbestos, demolition, and seeding of disturbed area.

**Priority Area: Operations and Maintenance****Item(s): Agricultural Operations**

Activities for 2010		Budget Line Item	Completed	Cost (Estimated)	Actual Cost
EC17	Tract 2009002 cropland management	LP-4	YES	\$500	\$0
EC18	Tract 2009005 interior livestock fence removal/reconstruction and tree clearing	LP-4	YES	\$20,000	\$11,674
EC19	Tract 2009005 invasive tree/understory clearing in grazing areas	LP-4	YES	\$10,000	\$21,000

---

**Priority Area: *Unplanned Expenses***

<b>Tract Num</b>	<b>Activities in 2010</b>	<b>Item(s)</b>	<b>Budget Line Item</b>	<b>Cost</b>
2009002	Survey work	General	LP-4	\$2,910
2009002	Yard prep and planting	Operations and Maintenance	LP-4	\$2,519
2009005	County road grading and gravel	Operations and Maintenance	LP-4	\$2,560
2009005	Place cobble rock on slough crossing on East property line	Operations and Maintenance	LP-4	\$825

## 2010 Elm Creek Complex Expense Summary

### 2010 Expenditures by Program Budget Line Item

Priority Area	Item	Budget Line Item	Estimated Expenditure	2010 Expenditure
Adaptive Management	Tern, Plover and Whooping Crane Experiment Permitting	PD-15	\$10,000	\$10,000
Adaptive Management	Flow-Sediment-Mechanical Experiment Permitting	PD-15	\$10,000	\$10,000
<b>Subtotal</b>			<b>\$20,000</b>	<b>\$20,000</b>
Adaptive Management	Tern, Plover and Whooping Crane Experiments	LP-2	\$140,000	\$159,585
Adaptive Management	Flow-Sediment-Mechanical Experiment	LP-2	\$110,000	\$6,350
<b>Subtotal</b>			<b>\$250,000</b>	<b>\$165,935</b>
Operations and Maintenance	Property Maintenance Obligations and Needs	LP-4	\$80,500	\$104,500
Operations and Maintenance	Agricultural Operations	LP-4	\$30,500	\$32,674
<b>Subtotal</b>			<b>\$111,000</b>	<b>\$137,174<sup>1</sup></b>
<b>Total</b>			<b>\$381,000</b>	<b>\$323,109</b>
Operations and Maintenance	Unplanned Property Expense	LP-4	\$0	\$8,814
Operations and Maintenance	New Property Expense	LP-4	\$0 <sup>2</sup>	\$0
<b>Subtotal</b>			<b>\$0</b>	<b>\$8,814<sup>1,3</sup></b>
<b>Total</b>			<b>\$381,000</b>	<b>\$331,923</b>

<sup>1</sup> Approximately \$82,355 or 56% of the LP-4 Budget Line Item total is considered capital costs.

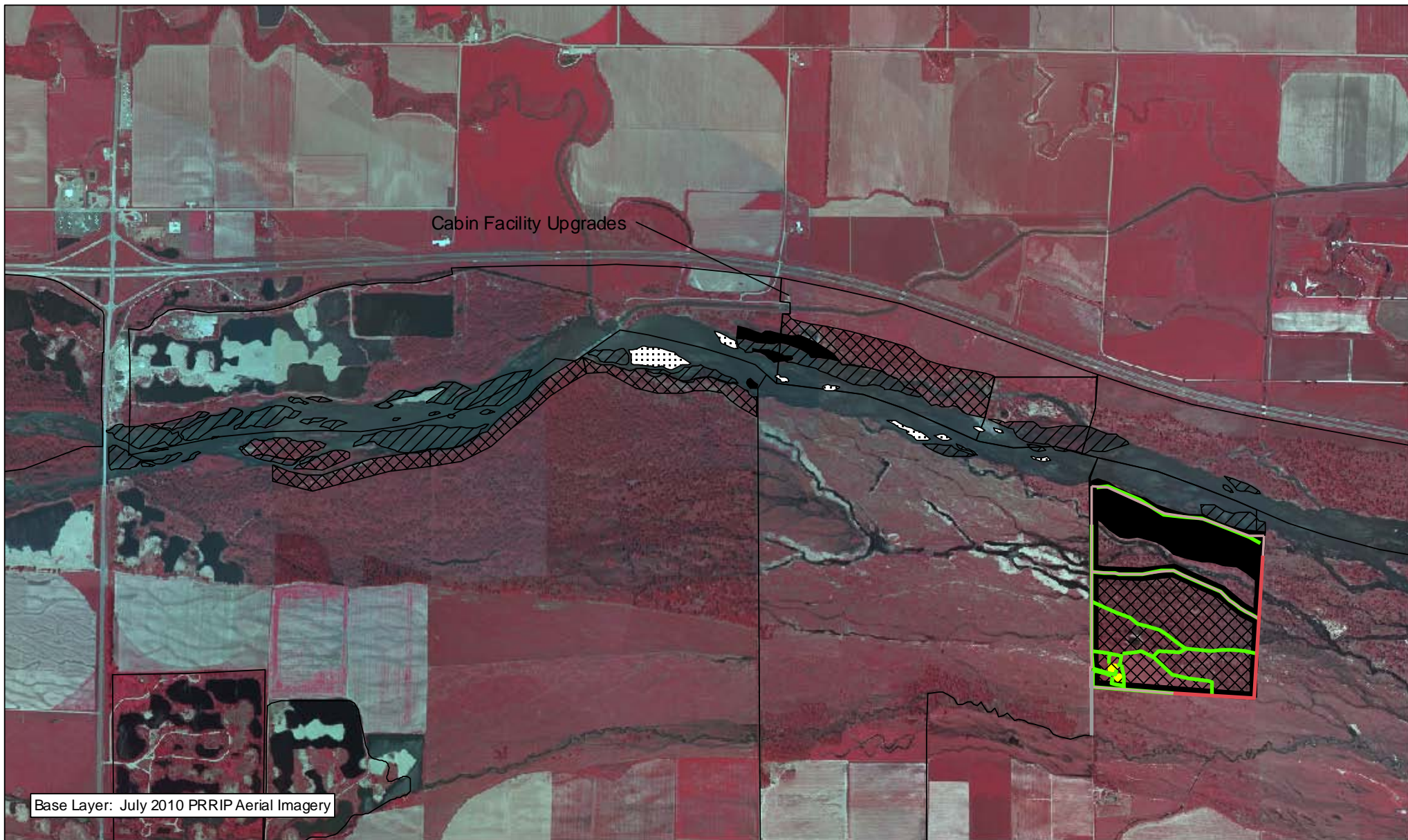
<sup>2</sup> There were no new additions to Program properties in the Elm Creek Complex in 2010.

<sup>3</sup> Property tax expenses are not reported in annual work reports.

---

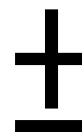
**2010 Revenues**

<b>Priority Area</b>	<b>Item</b>	<b>Estimated Income</b>	<b>Actual Income</b>
Operations and Maintenance	Tract 2009002 Cropland Rent	\$3,900	\$3,966
Operations and Maintenance	Tract 2009005 Grazing Lease Income	\$3,000	\$1,980
	<b>Total</b>	<b>\$6,900</b>	<b>\$5,946</b>



### Legend

- |                             |                  |
|-----------------------------|------------------|
| Property Boundary           | Building Removal |
| Barbwire Fence Construction | Clear & Grub     |
| Fence Removal               | Clear & Smooth   |
| Fence Repair                | Double Disking   |
| Road Maintenance            | Tree Clearing    |
| Aboveground Tree Clearing   |                  |



1 Miles

### ELM CREEK COMPLEX FY 2010 ACTIVITIES

Date: 1/31/2011  
By: TRT

Figure 1



**PLATTE RIVER**  
RECOVERY IMPLEMENTATION PROGRAM

Page Intentionally Left Blank



## 2010 Fort Kearny Complex Work Report

### Platte River Recovery Implementation Program

For More Information Contact: Jerry F. Kenny, [kennyj@headwaterscorp.com](mailto:kennyj@headwaterscorp.com), (308) 237-5728

---

#### General Activities

- **Complex Land Interest** – *Management agreements with conservation and private landowners that will allow the Program to implement necessary construction, maintenance and research/monitoring activities were not executed due to permitting and time constraints.*
  - **Good Neighbor Policy** – *Conducted all actions in accordance with Program's good neighbor policy.*
- 

#### Adaptive Management Activities

- **Tern and Plover Riverine Habitat Experiment** – *Design and construction of in-channel nesting islands and targeted tree clearing to increase distance to visual obstructions and predator roost habitat was not executed due to permitting and time constraints..*
  - **Whooping Crane Riverine Habitat Experiment** – *Design and implement vegetation clearing to provide a range of unobstructed view widths above the Programs minimums was not executed due to permitting and time constraints.*
  - **Riverine versus Off-Channel Tern and Plover Nesting** – *Monitored tern and plover use and productivity on Program riverine habitat and nearby OCSW habitat. Completed creation and maintenance of OCSW habitat on property 2009008.*
-

---

## Species Habitat Activities

- **Improve Target Species Sand and Water Habitat** – Increased available sand and water habitat for species through clearing vegetation and smoothing bare sand habitat on sandpit peninsulas on Tracts 2009008 and 2010002.
- **Protecting Other Species of Concern** – Identified presence of and determined methods to protect and/or benefit other species of concern while implementing land-related activities.
- **Reduce Known Threats to Target Species** – Completed investigation of the feasibility of power line relocation/marketing on Tract 2009004. Worked with Dawson Public Power and adjacent neighbors to relocate existing power line underground along Kilgore Road.

## Operations and Maintenance Activities

- **Basic Property Maintenance Obligations and Needs** – Fulfilled basic property ownership obligations including road/fence maintenance and noxious weed control on Tracts 2008001, 2009001 and 2009004. Completed tree removal project along Northern boundary including reseeding, decommissioned abandoned irrigation wells, and sold irrigation pipe on Tract 2009004. Replaced/repairs parts of the boundary fencing, improved access roads, installed two solar livestock water wells, sprayed brush re-growth, and completed N. accretion project by removing tree piles and reseeding on Tract 2008001.
- **Agricultural Operations** – Performed cropland management in accordance with BMPs on Tracts 200900 and 2009004. Created and managed a plan to graze Tract 2008001 to control vegetation. Tested irrigation well located on Tract 2008001.

## New Property Activities

- **Basic Property Maintenance Obligations and Needs** – The Program fulfilled basic property ownership/management obligations including road/fence maintenance, removal of surplus infrastructure/ debris, and noxious weed control on Tracts 2009008 and 2010002. The eastern boundary fence was replaced on surveyed property boundary and a woven wire fence was constructed around the west sand pit on Tract 2009008. Vegetation was removed and controlled with herbicide on the nesting peninsula on Tract 2010002.
- **Agricultural Operations** – Performed cropland management in accordance with BMPs on Tracts 2009008.



---

**Priority Area: General**

**Item(s): Complex Land Interest and Good Neighbor Policy**

Activities for 2010		Budget Line Item	Completed	Cost (Estimated)	Actual cost
FK1	Execution of management agreements w/ other conservation and private landowners for in-channel research and habitat construction activities	N/A	NO <sup>1</sup>	N/A	N/A
FK2	Coordination of Program land actions with neighboring landowners	N/A	YES	N/A	N/A

<sup>1</sup> Not executed due to permitting and time constraints.

**Priority Area: Adaptive Management**

**Item(s): Tern, Plover and Whooping Crane Riverine Habitat Experiments**

Activities for 2010		Budget Line Item	Completed	Cost (Estimated)	Actual cost
FK3	Experimental and Engineering design, permitting and bidding (budget for permitting)	PD-15	NO <sup>1</sup>	\$10,000	\$0
FK4	Construction for habitat selection experiments including tree and vegetation clearing and nesting island construction	LP-2	NO <sup>1</sup>	\$100,000	\$0

<sup>1</sup> Not executed due to permitting and time constraints.

---

**Priority Area: *Species Habitat***

**Item(s): *Other Species of Concern***

Activities for 2010		Budget Line Item	Completed	Cost (Estimated)	Actual cost
FK5	Habitat and species surveys on properties where work will occur	N/A	YES	N/A	N/A
FK6	Coordination with USFWS and NGPC to identify and mitigate potential impacts associated with 2010 land activities	N/A	YES	N/A	N/A

**Priority Area: *Species Habitat***

**Item(s): *Reduce Known Threats to Target Species***

Activities for 2010		Budget Line Item	Completed	Cost (Estimated)	Actual cost
FK7	Investigate feasibility of power line relocation/marketing on Tract 2009004	LP-4	YES	\$8,000	\$36,793
FK8	Investigate feasibility of marking transmission lines crossing river near TNC Speidell tract.	N/A	NO <sup>1</sup>	N/A	N/A

<sup>1</sup> Not executed due to permitting and time constraints.

---

**Priority Area: Operations and Maintenance****Item(s): Basic Property Maintenance Obligations and Needs**

Activities for 2010		Budget Line Item	Completed	Cost (Estimated)	Actual cost
FK9	Tract 2008001 boundary fence replace/repair, boundary signage	LP-4	ONGOING	\$15,000	\$7,969
FK10	Tract 2008001 noxious weed control	LP-4	YES	\$3,000	\$0 <sup>1</sup>
FK11	Tract 2008001 south access road maintenance	LP-4	YES	\$3,000	\$1,999 <sup>2</sup>
FK12	Tract 2008001 re-seeding of cleared north accretion ground	LP-4	YES	\$5,000	\$4,625
FK13	Tract 2008001 repair livestock watering well in south meadow	LP-4	YES	\$2,000	\$5,572 <sup>3</sup>
FK14	Tract 2008001 burn all islands in previously sprayed area	LP-4	NO <sup>4</sup>	\$1,000	\$0
FK15	Tract 2009001 boundary signage	LP-4	NO <sup>5</sup>	\$500	\$0
FK16	Tract 2009001 south boundary fence removal and clearing	LP-4	YES	\$3,000	\$3,000
FK17	Tract 2009001 noxious weed control	LP-4	NO <sup>6</sup>	\$3,000	\$0
FK18	Tract 2009004 boundary signage	LP-4	NO <sup>5</sup>	\$500	\$0
FK19	Tract 2009004 north boundary fence removal and clearing	LP-4	YES	\$7,000	\$16,103 <sup>7</sup>

<sup>1</sup> Noxious weed control was designated as responsibility of grazing tenant.

<sup>2</sup> Cost includes grading, crowning, and cobbling access road on N. tract.

<sup>3</sup> Cost includes drilling a new well and installation of a solar pump. Work was carried over from 2009 work plan.

<sup>4</sup> Activity was not completed due to weather and contractor availability issues in late spring.

<sup>5</sup> Some boundary signage in place. Complete signage with fencing project as tract is converted to grazing land.

<sup>6</sup> Majority of the tract is cropland.

<sup>7</sup> Cost includes seedbed preparation and drilling of native grass seed.

---

**Priority Area: Operations and Maintenance**

**Item(s): Basic Property Maintenance Obligations and Needs, cont'd**

Activities for 2010		Budget Line Item	Completed	Cost (Estimated)	Actual cost
FK20	Tract 2009004 noxious weed control	LP-4	NO <sup>8</sup>	\$5,000	\$0
FK21	Tract 2009004 well decommissioning	LP-4	YES	\$2,000	\$0 <sup>9</sup>

<sup>8</sup> Majority of the tract is cropland.

<sup>9</sup> Contractor purchased surplus irrigation equipment and reimbursed PRRIF \$667.

**Priority Area: Operations and Maintenance**

**Item(s): Agricultural Operations**

Activities in 2010		Budget Line Item	Completed	Cost (Estimated)	Actual cost
FK22	Tract 2009001 cropland management	LP-4	YES	\$500	\$9,651 <sup>1</sup>
FK23	Tract 2009004 cropland management	LP-4	YES	\$500	\$7,815 <sup>1</sup>

<sup>1</sup> Cost includes 1/3 of total cost of production.

---

**Priority Area: *Unplanned Expenses***

Tract Num	Activities in 2010	Item(s)	Budget Line Item	Cost
2008001	Grind up & haul away tree piles on N. accretion	Operations and Maintenance	LP-4	\$9,050
2008001	Irrigation well test	Operations and Maintenance	LP-4	\$210
2008001	Clean up and seed prep on N. accretion	Operations and Maintenance	LP-4	\$3,588
2008001	Soil test	Operations and Maintenance	LP-4	\$77 <sup>1</sup>
2008001	Clean ditch	Operations and Maintenance	LP-4	\$1,125 <sup>1</sup>
2008001	Skid steer with mower rental	Operations and Maintenance	LP-4	\$377
2008001	Drill new well on N. tract	Operations and Maintenance	LP-4	\$1,477
2008001	Solar livestock watering system on North	Agricultural Operations	LP-4	\$4,330
2008001	2 rubber tire tanks for livestock water	Agricultural Operations	LP-4	\$2,941
2008001	Spray brush on N. accretion and islands	Species Habitat	LP-4	\$9,237
2008001	Continuous panels to exclude livestock	Agricultural Operations	LP-4	\$1,130
2008001	Haul away metal debris	Operations and Maintenance	LP-4	\$420
2009004	Roundup treatment of 2011 grass seeding area	Agricultural Operations	LP-4	\$1,759
2009004	Landfill charge for disposal broken pipe	Agricultural Operations	LP-4	\$157
2009004	New field entrance on east edge of property	Operations and Maintenance	LP-4	\$778
2009004	Skid steer with mower rental	Operations and Maintenance	LP-4	\$377
2009004	New barbed wire fence around acreage	Agricultural Operations	LP-4	\$4,684
2009004	Clean up around decommissioned wells	Operations and Maintenance	LP-4	\$1,215
2009004	Survey	General	LP-4	\$1,589

<sup>1</sup> Work was carry over from 2009 work plan.

---

**Priority Area: *New Property Expenses***

Tract Num	Activities in 2010	Item(s)	Budget Line Item	Cost
2009008	Survey work	General	LP-4	\$6,790
2009008	Geotechnical services	Operations and Maintenance	LP-4	\$360
2009008	Removed tree on North side of building	Operations and Maintenance	LP-4	\$350
2009008	Habitat enhancement on peninsula	Species Habitat	LP-4	\$1,515
2009008	Blasting to stabilize sandpit	Species Habitat	LP-4	\$480
2009008	Well decommission at old building site	Operations and Maintenance	LP-4	\$255
2009008	Soil sampling	Agricultural Operations	LP-4	\$29
2009008	Sprayed peninsula for vegetation control	Species Habitat	LP-4	\$299
2008008	Skid steer with mower rental	Operations and Maintenance	LP-4	\$377
2009008	Removal of trees for fence replacement on East property boundary	Operations and Maintenance	LP-4	\$1,080
2009008	New fence construction on East property boundary	Operations and Maintenance	LP-4	\$5,295
2009008	Woven wire fence around West sand pit	Species Habitat	LP-4	\$93,450 <sup>1</sup>
2009008	Relocation of electrical service for placement of woven wire fence	Operations and Maintenance	LP-4	\$307
2009008	Prep and paint pipe gate at main entrance	Operations and Maintenance	LP-4	\$217
2009008	Installation of snow fence at SW corner of property	Operations and Maintenance	LP-4	\$1,078
2009008	Clean up and removal of debris from property	Operations and Maintenance	LP-4	\$945
2009008	Roundup treatment of 2011 seeding area	Operations and Maintenance	LP-4	\$303

<sup>1</sup> Includes \$9,185 for fencing design and construction administration.

---

**Priority Area: *New Property Expenses cont'd***

<b>Tract Num</b>	<b>Activities in 2010</b>	<b>Item(s)</b>	<b>Budget Line Item</b>	<b>Cost</b>
2009008	Weed and tree spraying	Operations and Maintenance	LP-4	\$3,327
2009008	Cropland management	Agricultural Operations	LP-4	\$23,470 <sup>1</sup>
2010002	Pre-emergent treatment on island	Species Habitat	LP-4	\$1,411
2010002	Paddle scraper work on island	Species Habitat	LP-2	\$1,753
2010003	Survey work	General	LP-4	\$5,191

<sup>1</sup>Cost includes 1/2 of total cost of production.

## 2010 Fort Kearny Complex Expense Summary

### 2010 Expenditures by Program Budget Line Item

Priority Area	Item	Budget Line Item	Budgeted Expenditure	2010 Expenditure
Adaptive Management	Tern, Plover and Whooping Crane Experiment Permitting	PD-15	\$10,000	\$0
<b>Subtotal</b>			<b>\$10,000</b>	<b>\$0</b>
Adaptive Management	Tern, Plover and Whooping Crane Experiments	LP-2	\$100,000	\$1,753
<b>Subtotal</b>			<b>\$100,000</b>	<b>\$1,753</b>
Species Habitat	Reduce Known Threats to Target Species	LP-4	\$8,000	\$36,793
<b>Subtotal</b>			<b>\$8,000</b>	<b>\$36,793</b>
Operations and Maintenance	Property Maintenance Obligations and Needs	LP-4	\$50,000	\$39,268
Operations and Maintenance	Agricultural Operations	LP-4	\$1,000	\$17,466
<b>Subtotal</b>			<b>\$51,000</b>	<b>\$56,734</b>
<b>Total</b>			<b>\$169,000</b>	<b>\$95,280</b>
Operations and Maintenance	Unplanned Property Expense	LP-4	\$0	\$44,521
Operations and Maintenance	New Property Expense	LP-4	\$112,500 <sup>1</sup>	\$146,529
<b>Subtotal</b>			<b>\$112,500</b>	<b>\$191,050<sup>2</sup></b>
<b>Total</b>			<b>\$281,500</b>	<b>\$286,330<sup>3</sup></b>

<sup>1</sup> \$225,000 was identified in the 2010 budget for “new” properties. There were 6 new additions to Program properties and the Fort Kearny Complex had 3 additions in 2010.

<sup>2</sup> Property tax expenses are not reported in annual work reports.



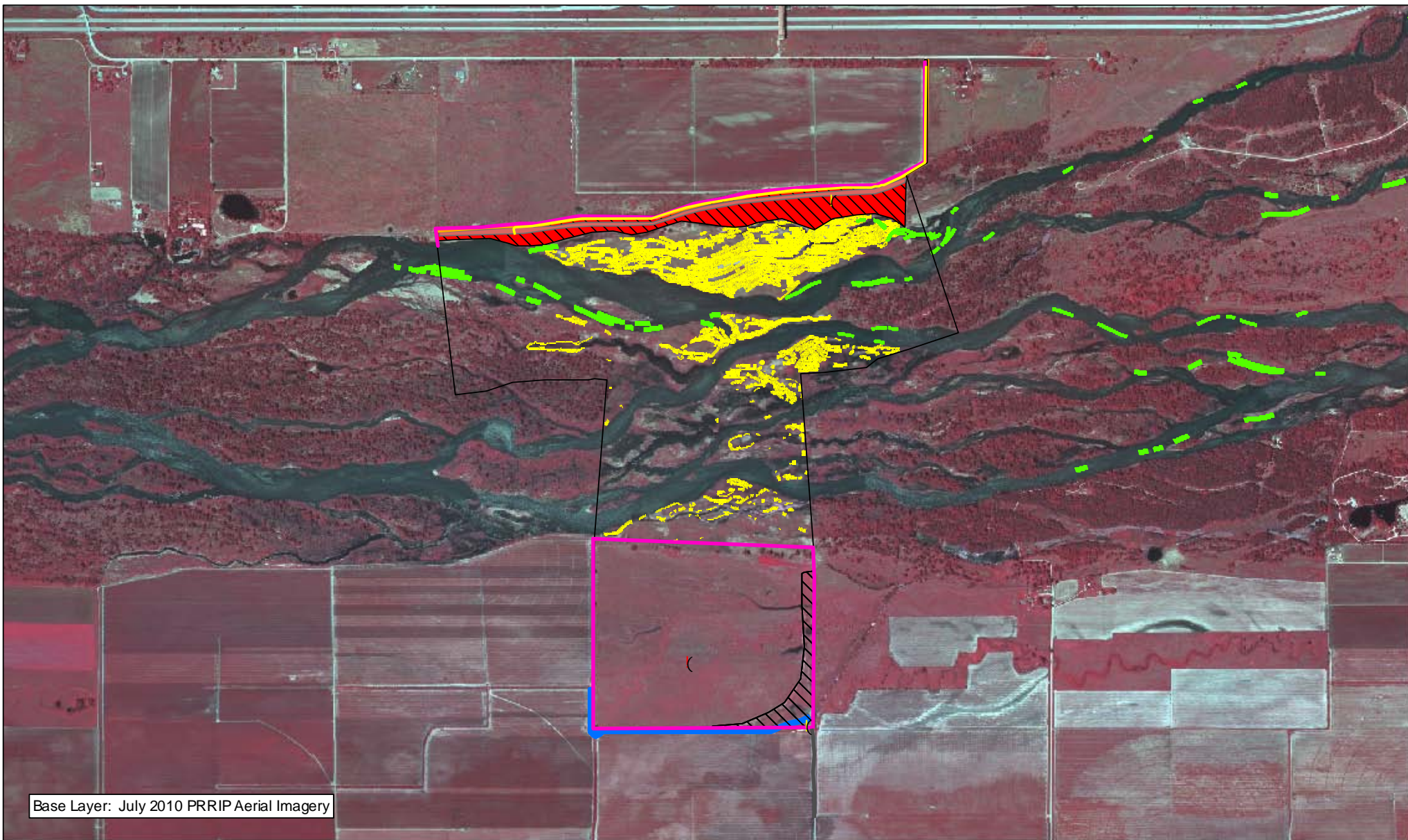
---

<sup>3</sup> Approximately \$192,198 or 67% of the LP-4 Budget Line Item total is considered capital costs.

### ***2010 Revenues to Program***

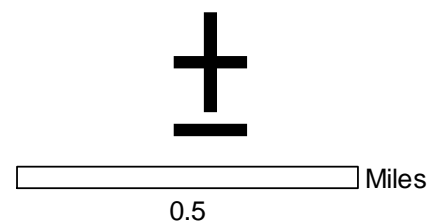
<b>Priority Area</b>	<b>Item</b>	<b>Estimated Income</b>	<b>Actual Income</b>
Operations and Maintenance	Tract 2008001 Grazing Income	\$9,000	\$4,000
Operations and Maintenance	Tract 2009001 Cropland share	\$TBD	\$25,274
Operations and Maintenance	Tract 2009004 Crop share	\$TBD	\$20,661
Operations and Maintenance	Tract 2009004 Well Decommission Cost Share	\$1,200	\$825
Operations and Maintenance	Tract 2009004 credit for purchase of surplus material from well decommissioning contractor		\$667
Operations and Maintenance	Tract 2009004 Irrigation pipe disposal		\$2,646
Operations and Maintenance	Tract 2009008 Crop share		\$60,468
Operations and Maintenance	Tract 2009008 livestock shed disposal		\$1,301
Operations and Maintenance	Tract 2009008 Aluminum Irrigation pipe salvage		\$1,470
Operations and Maintenance	Tract 2009008 Sand & Gravel Income		\$18,000 <sup>1</sup>
	<b>Total</b>	<b>\$10,200</b>	<b>\$135,312</b>

<sup>1</sup> Figure for income is an estimate based on mining 73,560 cubic yards of material in 2010. Payment for 2010 is due April 1, 2011.



### Legend

- |                           |                                |
|---------------------------|--------------------------------|
| Property Boundary         | Ditch Excavation               |
| Solar Livestock Water     | Grass Seeding                  |
| Well Repair               | Herbicide for Brush Control    |
| Cobble Rock               | Seedbed Preparation & Clean Up |
| Fence Repair              | Shredding/Mowing               |
| Road Maintenance          | Tree Pile Removal              |
| Phragmites Spraying-PVWMA |                                |

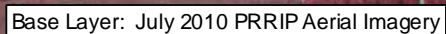














### FT. KEARNY COMPLEX FY 2010 ACTIVITIES - WEST

Date: 1/31/2011  
By: TRT

Figure 1





- |   |                                |   |                                     |
|---|--------------------------------|---|-------------------------------------|
|  | Property Boundary              |  | Phrag Spraying- PVWMA               |
|  | Culvert Installation           |  | Seedbed Preparation & Grass Seeding |
|  | Well Decommissioning           |  | Shredding/Mowing                    |
|  | Well Modification              |  | Tree Clearing                       |
|  | Barbwire Fence Construction    |   |                                     |
|  | Cobble Rock                    |   |                                     |
|  | Power Line Removal             |   |                                     |
|  | Underground Primary Electrical |   |                                     |

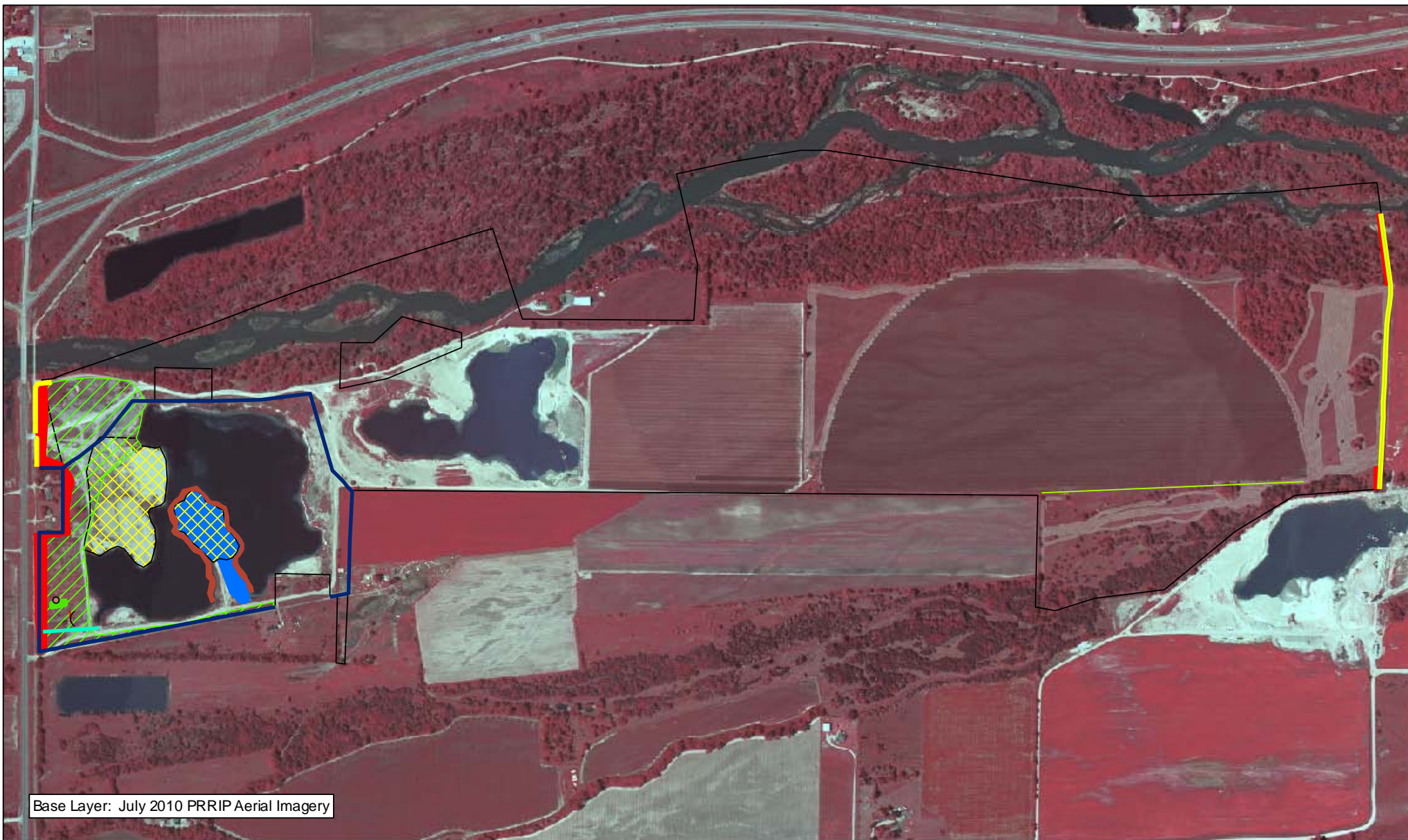


A horizontal line segment with a box at each end. Below the line, the number 0.5 is centered. To the right of the right box, the word Miles is written.

Date: 1/31/2011  
By: TRT

Figure 2





Base Layer: July 2010 PRRIP Aerial Imagery



### Legend

- |                              |                    |
|------------------------------|--------------------|
| Property Boundary            | Bank Stabilization |
| Tree Removal                 | Building Removal   |
| Well Decommissioning         | Clear & Smooth     |
| Barbwire Fence Construction  | Herbicide          |
| Fence Removal                | Shredding/Mowing   |
| Snow Fence                   | Tree Clearing      |
| Wovenwire Fence Construction |                    |



0.5 Miles

### FT. KEARNY COMPLEX FY 2010 ACTIVITIES - EAST

Date: 1/31/2011  
By: TRT

Figure 3



**PLATTE RIVER**  
RECOVERY IMPLEMENTATION PROGRAM

Page Intentionally Left Blank