

Recommendations for Colorado Instream Flow and Natural Lake Level Program

USDA Forest Service, 2016
Kelly Palmer

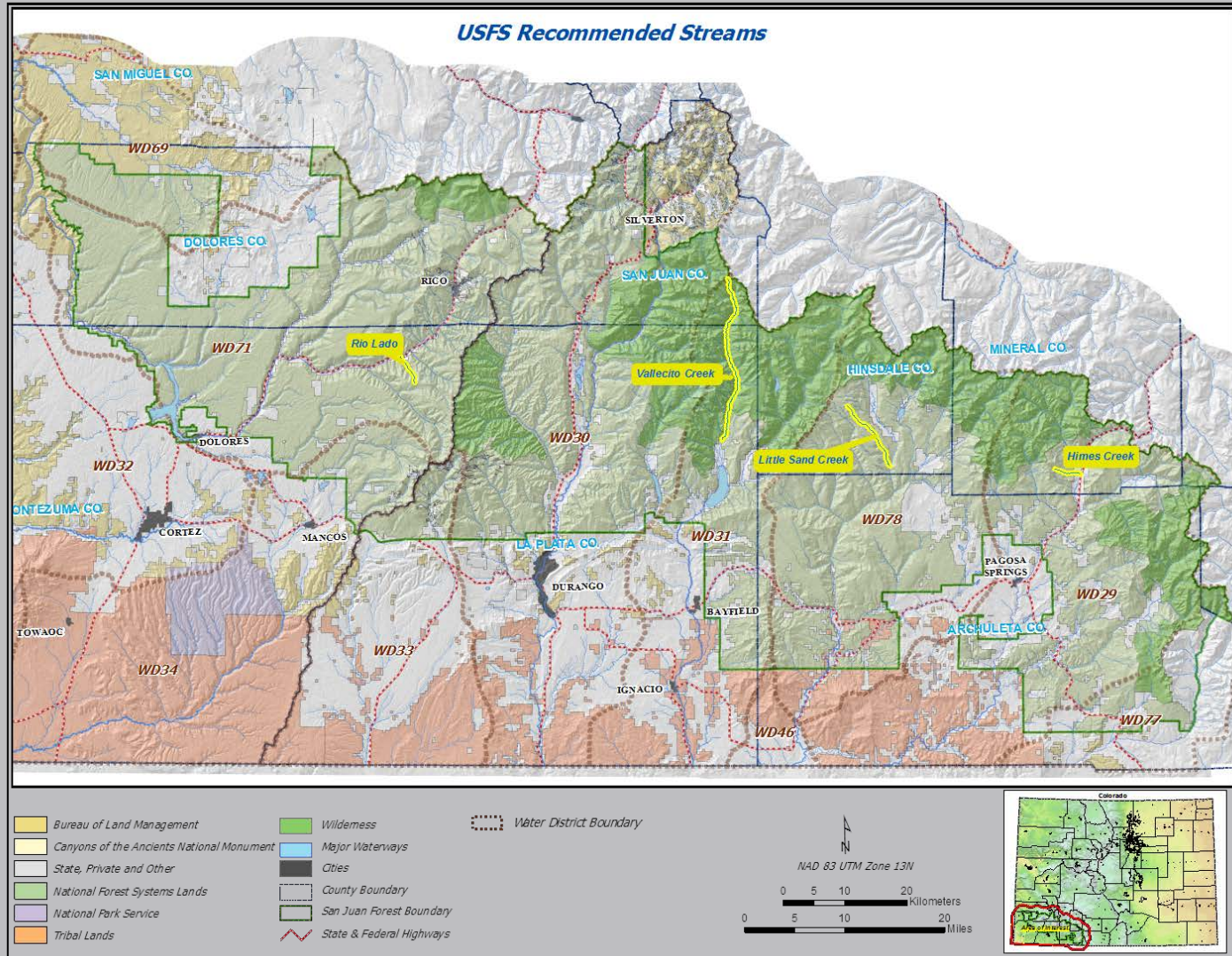


Recommended Streams on the San Juan National Forest



- Himes Creek
- Little Sand Creek
- Rio Lado Creek
- Vallecito Creek

Vicinity Map

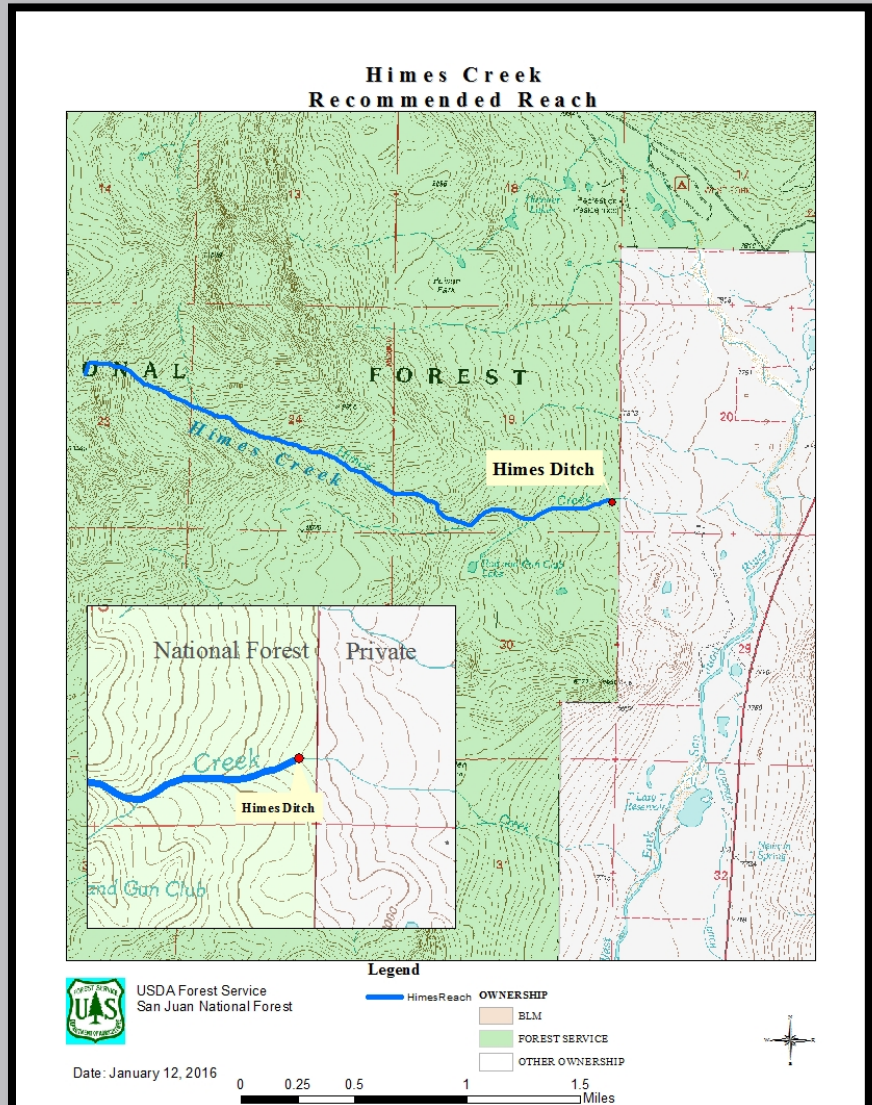


Himes Creek



Summary of Himes Creek

- Reach length 2.8 miles
- Isolated stream
- Core conservation population Colorado River cutthroat trout
- Prevent listing as an endangered species
- Partnership USFS, CPW, and landowner to protect fish
- Fish migration barrier built on private lands
- Excellent habitat condition
- Excellent riparian condition



Summary of Himes Creek

- Recommended reach is 100% on Forest Service
- No water rights within reach
- Reach ends above Himes Ditch
- No stream gage records
- Field data collection in 2016



Himes Creek reach terminus

Natural Environment to be Preserved

Himes Creek

- Conservation population of pure-strain Colorado River cutthroat trout
- Aquatic macroinvertebrates
- Riparian vegetation

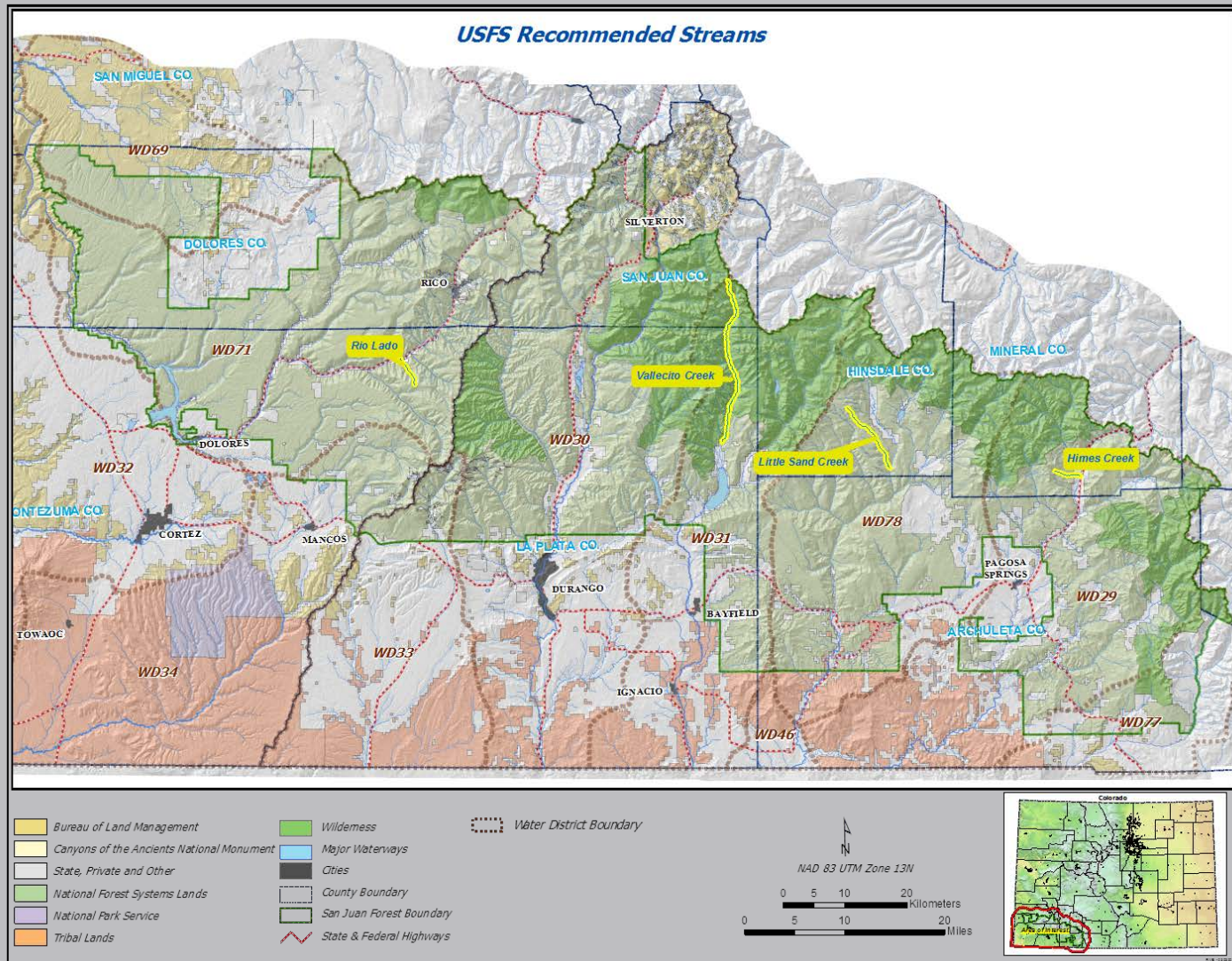


Little Sand Creek



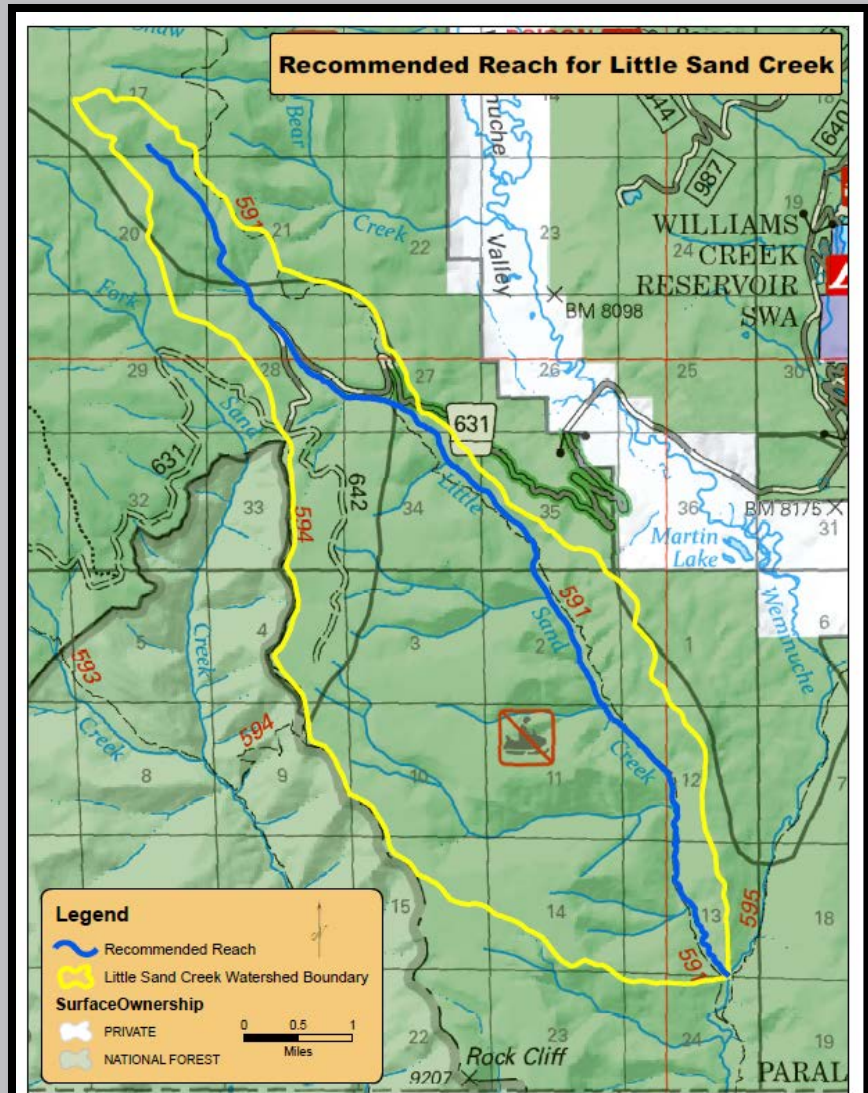
Little Sand Creek

Vicinity Map



Summary of Little Sand Creek

- Cutthroat trout and brook trout
- Good habitat condition
- Good riparian condition
- Many beaver ponds and associated wetland complexes
- Reach is 100% on Forest Service
- No water rights exist on this stream
- No stream gage records
- Field data collection in 2016



Natural Environment to be Preserved

Little Sand Creek

- Trout fishery
- Wetlands
- Water-dependent wildlife habitat
- Aquatic macroinvertebrates
- Riparian vegetation

CPW fish survey in Little Sand Creek

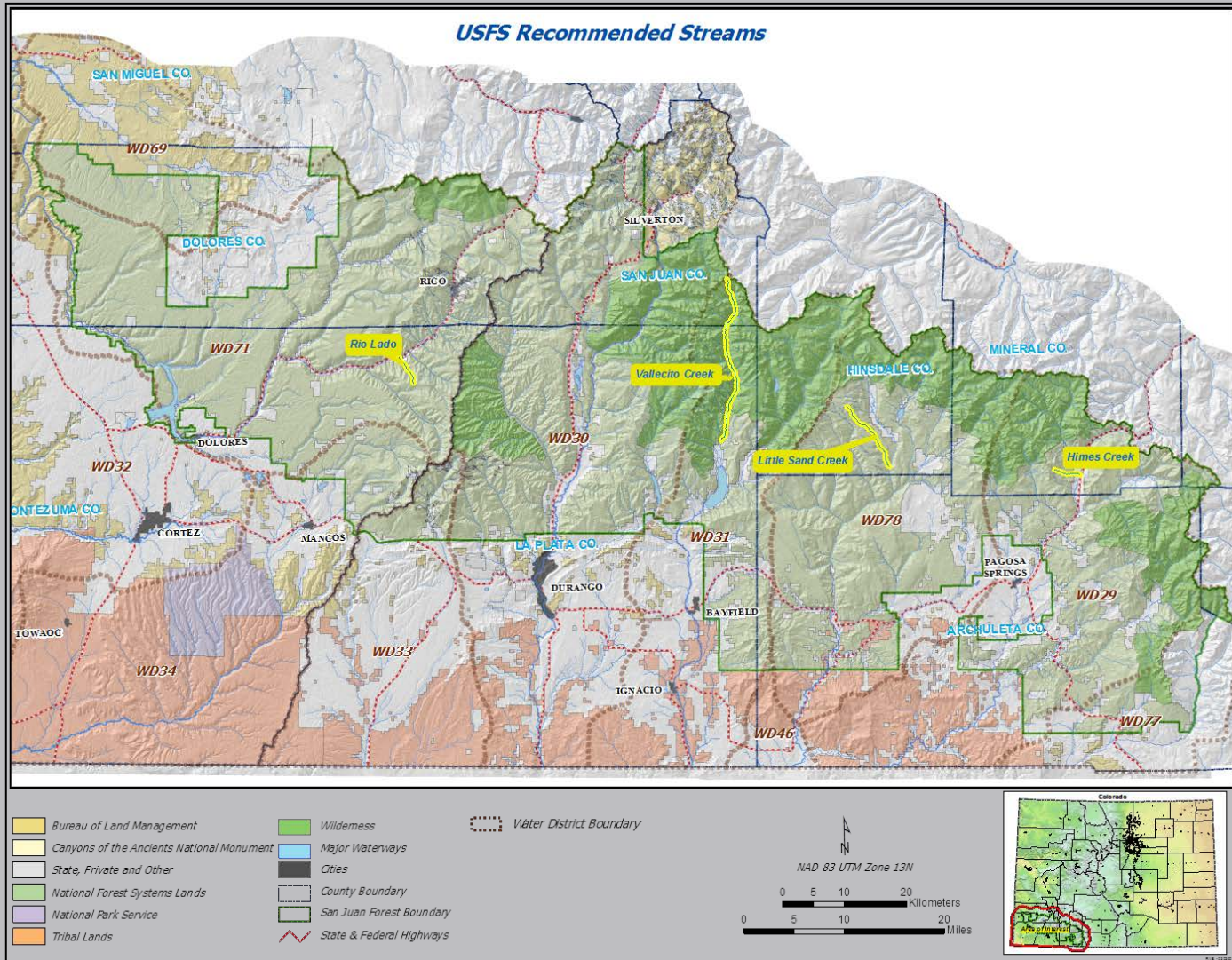


Rio Lado Creek



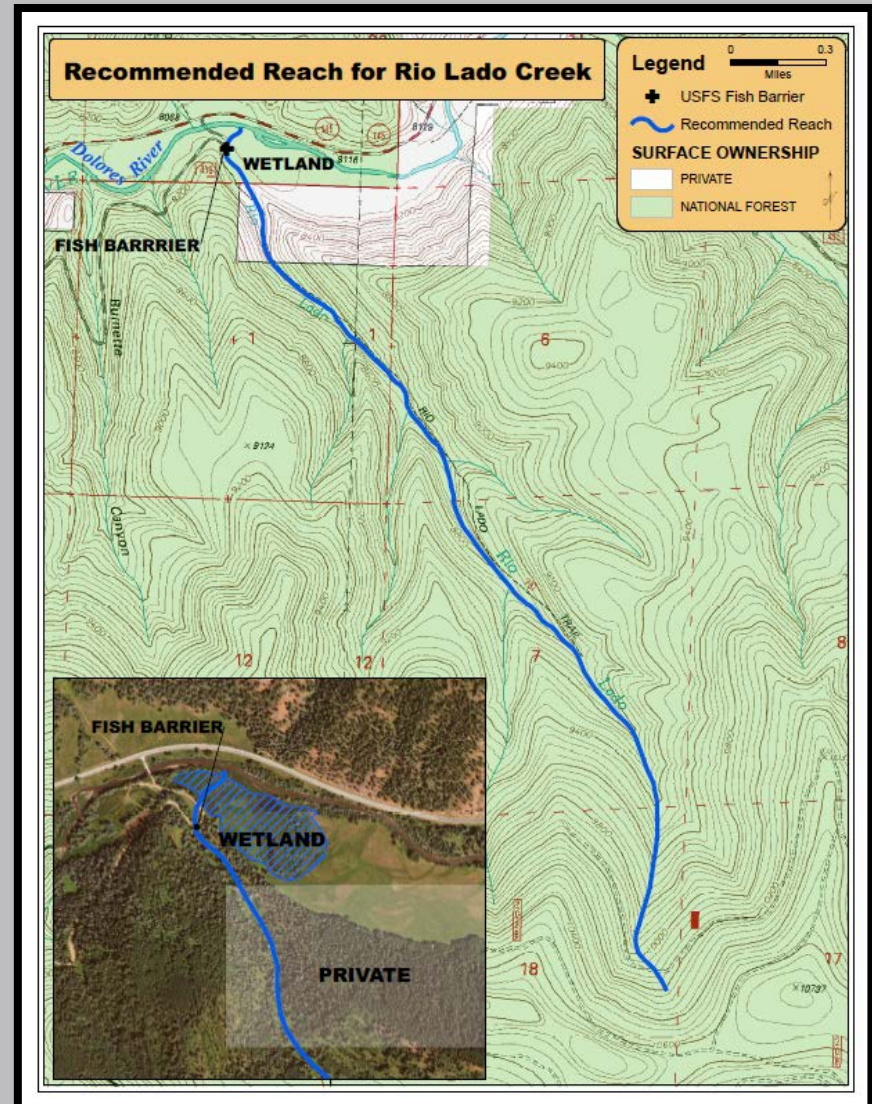
Rio Lado Creek

Vicinity Map



Summary of Rio Lado Creek

- Core conservation population greenback-lineage cutthroat trout
- Good habitat condition
- Good riparian condition
- Large wetland complexes
- 3.1 miles of reach on Forest Service
- 0.3 miles on private land inholding
- No water rights
- No stream gage records
- Field data collection in 2016



Natural Environment to be Preserved

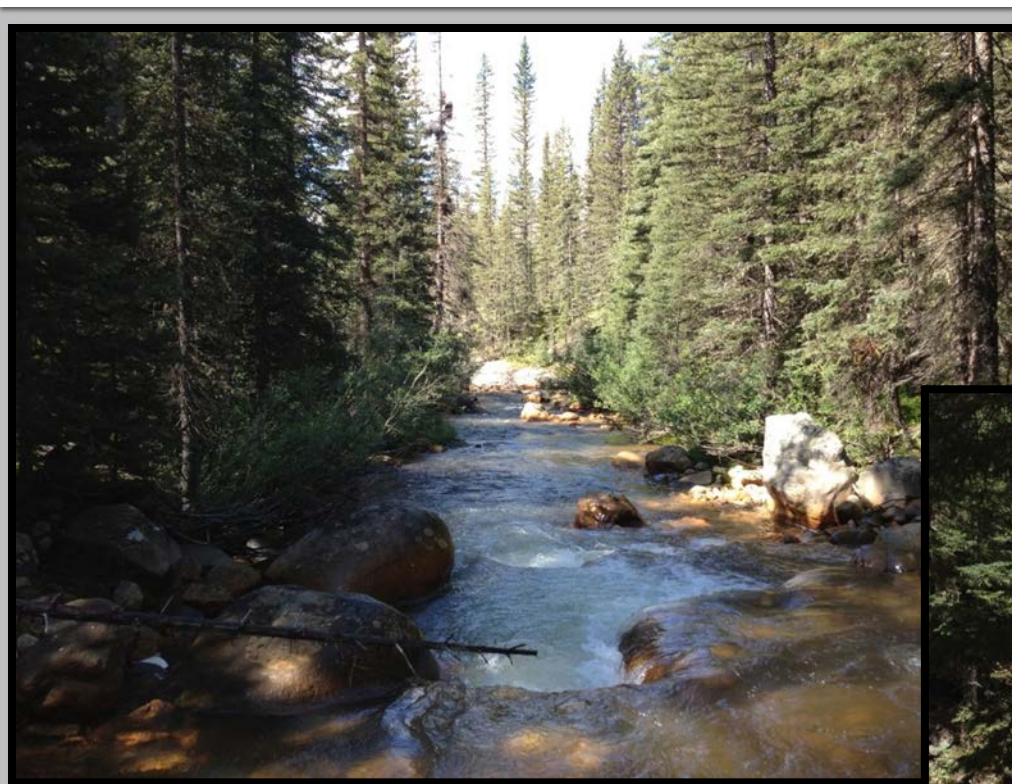
Rio Lado Creek

- Core conservation population of greenback cutthroat trout
- Wetlands
- Water-dependent wildlife habitat
- Aquatic macroinvertebrates
- Riparian vegetation



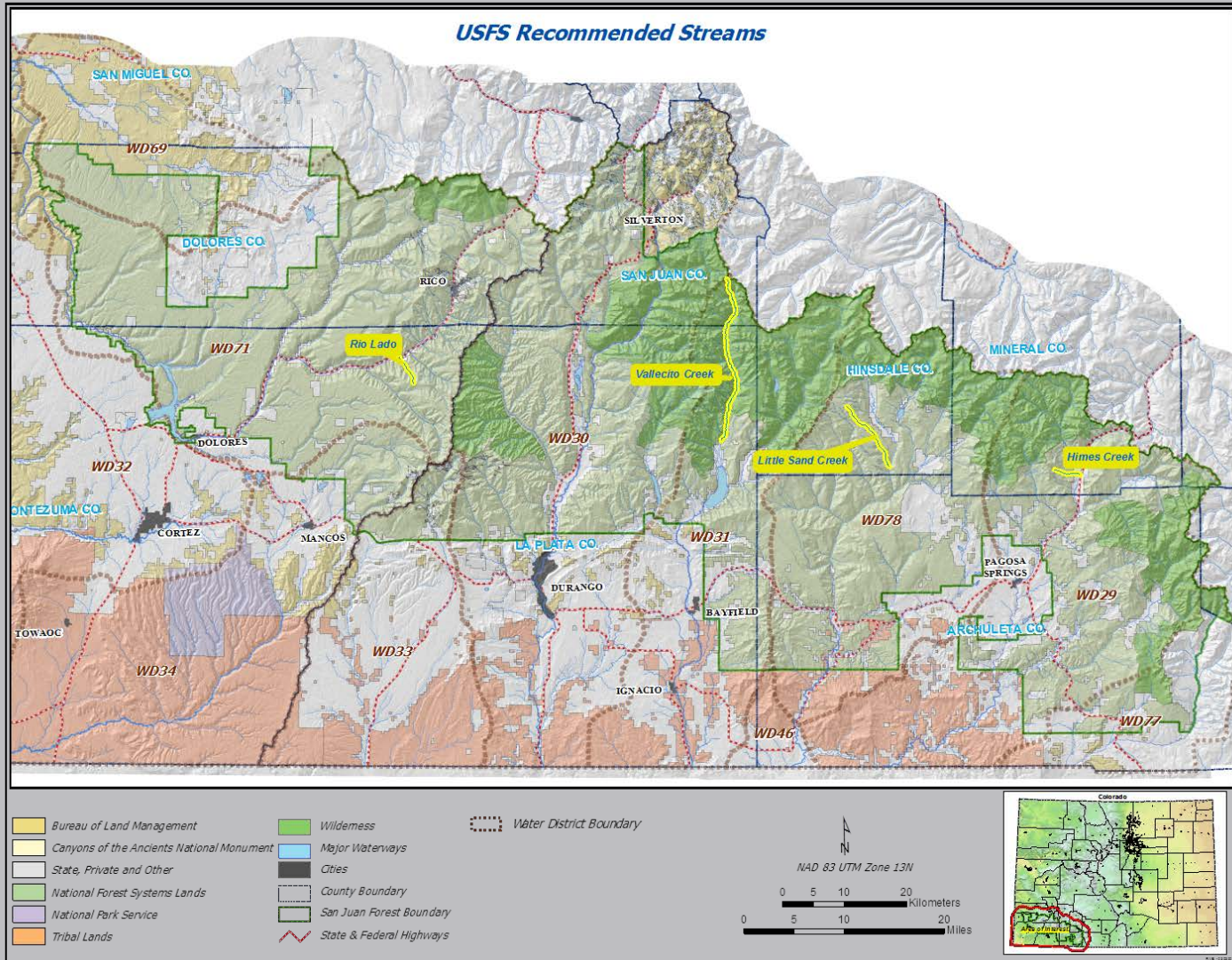
Large wetlands complex on Rio Lado Creek near confluence of with the Dolores River.

Vallecito Creek



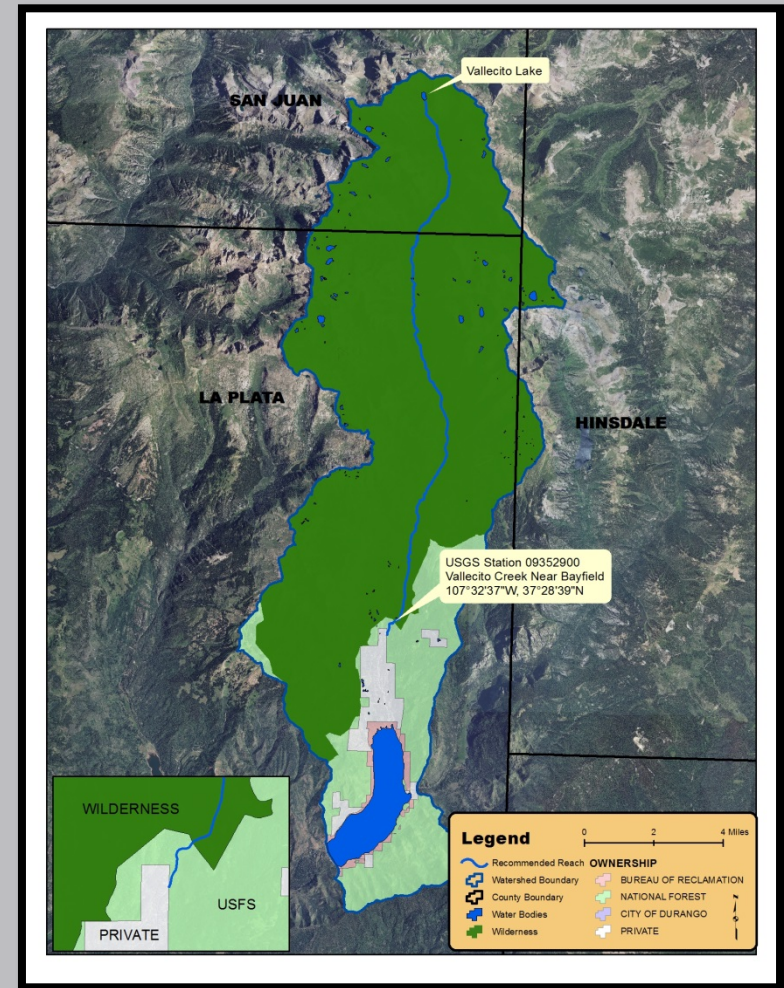
Vallecito Creek

Vicinity Map



Summary of Vallecito Creek

- Wilderness stream
 - High-value fishery
 - Excellent habitat condition
 - Excellent riparian and wetland condition
 - Water-based recreation
 - Reach 100% on Forest Service
 - Within recommended reach, only water rights are for CWCB lake levels
-
- USGS Gage 1963 - Present
 - Field data collection in 2016



Natural Environment to be Preserved

Vallecito Creek

- High-value fishery
- Aquatic
- Macroinvertebrates
- Water-dependent wildlife habitat
- Riparian vegetation
- Wetlands



Vallecito Creek, a popular whitewater recreation river