



## 2009 Land Budget Overview

### Platte River Recovery Implementation Program

For More Information Contact: Jerry F. Kenny, [kennyj@headwaterscorp.com](mailto:kennyj@headwaterscorp.com), (308) 237-5728

---

#### ***2009 Budget Overview by Tract***

Tract	Actual Expenditure	Actual Income
Tract 2008001	\$34,640	\$0
Tract 2008002	\$108,950	\$0
Tract 2009001	\$0	\$14,247
Tract 2009002	\$28,190	\$3,966
Tract 2009003	\$3,679	\$0
Tract 2009004	\$15,919	\$34,741
Tract 2009005	\$0	\$1,980
Tract 2009007	\$0	\$3,818
<b>Total</b>	<b>\$191,378</b>	<b>\$58,752</b>

#### ***2009 Budget Overview by Budget Line Item***

Budget Line Item	Description	Actual Expenditure
LP-2	Adaptive Management Species Habitat Actions	\$79,200
LP-4	Property Maintenance & Agricultural Operations	\$86,413
LP-5	Conceptual design for bridge across north channel	\$25,765



**PLATTE RIVER**  
RECOVERY IMPLEMENTATION PROGRAM

Page Intentionally Left Blank



## 2009 Tract 2008001 Annual Work Report

### Platte River Recovery Implementation Program

For More Information Contact: Jerry F. Kenny, [kennyj@headwaterscorp.com](mailto:kennyj@headwaterscorp.com), (308) 237-5728

---

#### General Activities

- **Complex Land Interest** – *Worked with neighbors to try and make additions to the complex. The northeast and southwest neighbors were approached and turned us down. The southeast neighbor wanted to continue to pursue a conservation easement.*
  - **Good Neighbor Policy** – *Coordinated with area landowners to provide information about Program actions and ensure that activities were conducted in accordance with Program's good neighbor policy.*
- 

#### Adaptive Management Activities

- **Whooping Crane Riverine Habitat Experiment** – *Planning for the widening of ½ mile of north channel and creation of in-channel tern and plover nesting island complex was terminated. It was determined that it is unlikely that minimum habitat criteria could be maintained at the site.*
- **Riverine versus Off-Channel Tern and Plover Nesting** – *Planning for the creation of off-channel tern and plover nesting habitat between the middle and south channel was terminated when the Program acquired existing off-channel habitat in the area.*

#### Species Habitat Activities

- **Improve Target Species Sand and Water Habitat** – *Removed invasive tree infestations on grassland area on north side of the property of Tract 2008001 to prevent further degradation of meadow area. Controlled woody vegetation with herbicide on islands so that shredding is more effective in controlling vegetation to minimum height requirements.*
  - **Protecting Other Species of Concern** – *Property was surveyed by FWS personnel and no Platte River caddisfly population was identified.*
-

---

### ***Operations and Maintenance Activities***

- ***Basic Property Maintenance Obligations and Needs*** – *Controlled noxious weeds on south meadow and north accretion, removed small trees and brush on north accretion, cleaned up trees and unwanted debris on north accretion, mowed entrance roads, and constructed an airboat ramp.*
- ***Agricultural Operations*** – *Sprayed south meadow with roundup in late April to control wheatgrass, burned west ½ of south meadow. Property was not grazed in 2009.*

---

**Priority Area: General****Item(s): Complex Land Interest and Good Neighbor Policy**

No.	Activities for 2009	Budget Line Item	Completed	Cost (Estimated)	Actual Cost
WY1	Work on the boundary issue with NE neighbor.	N/A	YES	N/A	N/A
WY2	Work with neighbors to try and make additions to the complex.	N/A	YES <sup>1</sup>	N/A	N/A

<sup>1</sup> The NE and SW neighbors were approached and turned us down. The SE neighbor wanted to continue to pursue a conservation easement.

**Priority Area: Adaptive Management****Item(s): Tern, Plover and Whooping Crane Riverine Habitat Experiments**

	Activities for 2009	Budget Line Item	Completed	Cost (Estimated)	Actual Cost
WY3	Planning for the widening of ½ mile of north channel and creation of in-channel tern and plover nesting island complex	N/A	NO <sup>1</sup>	N/A	N/A
WY4	Planning for the creation of off- channel tern and plover nesting habitat between the middle and south channel	N/A	NO <sup>2</sup>	N/A	N/A

<sup>1</sup> It was determined that it is unlikely that minimum habitat criteria could be maintained at the site.

<sup>2</sup> Planning efforts were terminated when the Program acquired existing off-channel habitat in the area.

---

**Priority Area: Species Habitat****Item(s): Other Species of Concern**

Activities for 2009		Budget Line Item	Completed	Cost (Estimated)	Actual Cost
WY5	Habitat and species surveys on properties where work will occur	N/A	YES	N/A	N/A
WY6	Coordination with USFWS and NGPC to identify and mitigate potential impacts associated with 2010 land activities	N/A	YES	N/A	N/A

**Priority Area: Operations and Maintenance****Item(s): Basic Property Maintenance Obligations and Needs**

Activities for 2009		Budget Line Item	Completed	Cost (Estimated)	Actual Cost
WY7	Fix perimeter barbed wire fence.	LP-4	NO <sup>1</sup>	\$10,000	\$0
WY8	Clean out the ditch on the south side of the property as the neighbor has asked us to do.	LP-4	NO <sup>2</sup>	\$1,200	\$0
WY9	Make repairs to the present stock well at the SE corner of the property.	LP-4	NO <sup>3</sup>	\$5,000	\$0
WY10	Decommission groundwater monitoring wells on south.	LP-4	NO <sup>4</sup>	1,800	\$0

<sup>1</sup> No action was taken on this objective in 2009 as the property was not grazed. Fencing was rescheduled for FY 2010.

<sup>2</sup> Neighbor was unsuccessful in getting cost assistance from local township board. Work was rescheduled for FY 2010.

<sup>3</sup> No action was taken on this objective in 2009 as the property was not grazed. Well repair was rescheduled for FY 2010.

<sup>4</sup> It was recommended by the GC to not decommission these wells as they may be beneficial for future monitoring/ research purposes.

---

**Priority Area: Operations and Maintenance**

**Item(s): Basic Property Maintenance Obligations and Needs, cont'd**

Activities for 2009		Budget Line Item	Completed	Cost (Estimated)	Actual Cost
WY11	Noxious weed control	LP-4	YES <sup>1</sup>	\$1,000	\$1,000
WY12	Removed small woody vegetation on the north side of property.	LP-4	YES	\$6,500	\$6,120
WY13	Cleaned up all unwanted debris (i.e. tires, barb wire, metal, concrete, barn wood, along Northern high bank of property).	LP-4	YES	\$15,000	\$8,613
WY14	Scrape off rice dike and consider using the material for repairing the south road into the property.	LP-4	NO <sup>2</sup>	\$4,000	\$0

<sup>1</sup> Work was conducted by EDO summer intern and Land Manager.

<sup>2</sup> Work was planned to be done at the same time as Item WY8. Work was rescheduled for FY 2010.

---

**Priority Area: Operations and Maintenance****Item(s): Agricultural Operations**

Activities for 2009		Budget Line Item	Completed	Cost (Estimated)	Actual Cost
WY15	Sprayed wheatgrass on south pasture in early spring.	LP-4	YES	\$2,500	\$3,855
WY16	Late spring burn was conducted to evaluate the success of herbicide treatment followed by a prescribed burn on suppression of wheatgrass	LP-4	YES	\$0	N/A
WY17	Understand the south property soil ph and identify the best way to set back wheatgrass and encourage native grass expansion.	LP-4	NO <sup>1</sup>	\$0	N/A

<sup>1</sup> Work was rescheduled for FY 2010.

**Priority Area: Unplanned Expenses**

Tract Num	Activities in 2009	Item(s)	Budget Line Item	Cost
2008001	Airboat ramp construction & gravel	Operations and Maintenance	LP-4	\$1,053
2008001	Mowing	Operations and Maintenance	LP-4	\$700
2008001	Controlled woody vegetation on islands so that shredding is more effective in controlling vegetation to minimum height requirements.	Operations and Maintenance	LP-4	\$13,299

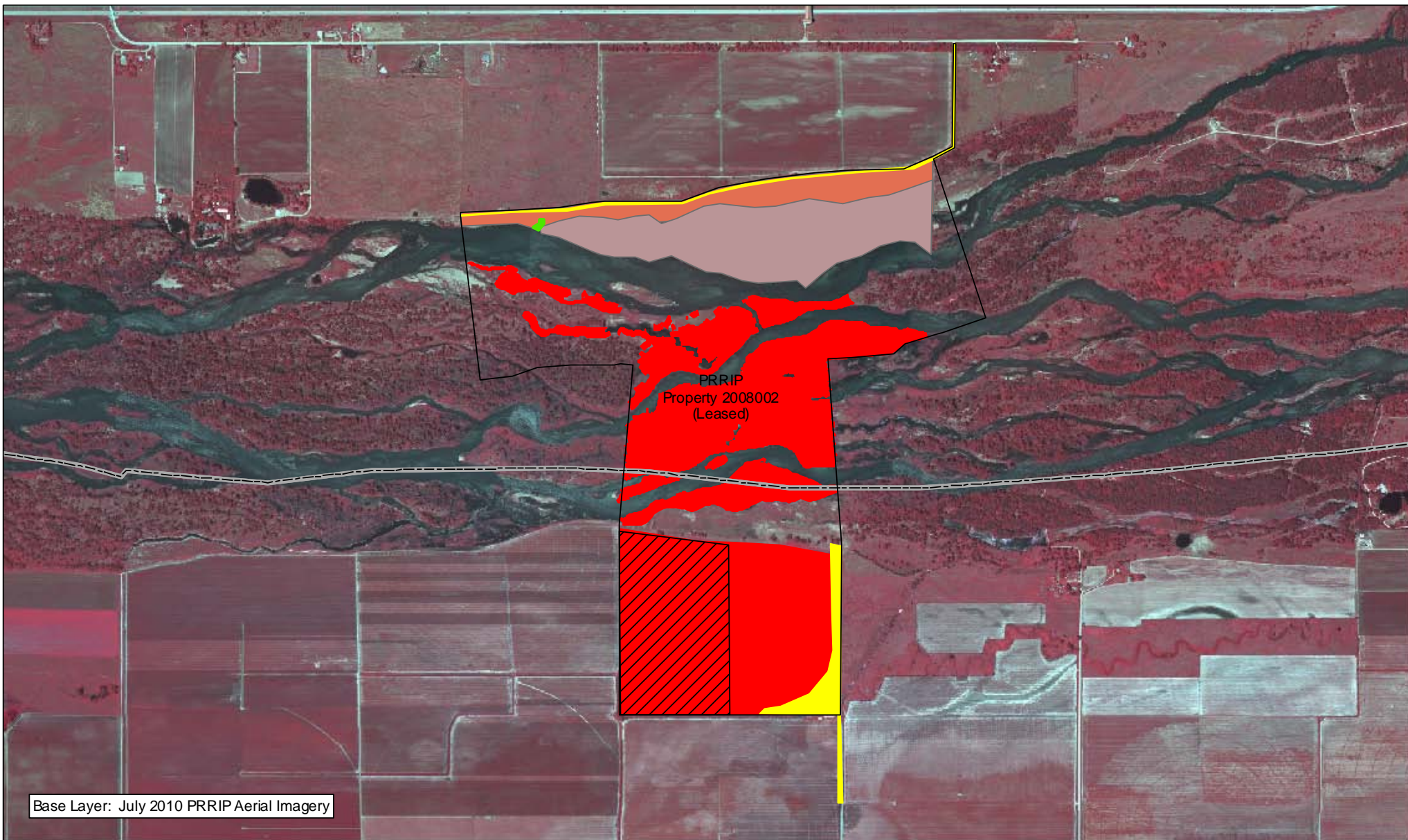


---

## 2009 Tract 2008001 Expense Summary

### *2009 Program Expenditures*

Expense Category	Budgeted	Expended
Planned	\$47,000	\$19,588
Unplanned	\$0	\$15,052
<b>Total</b>	<b>\$47,000</b>	<b>\$34,640</b>



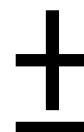
PLATTE RIVER  
RECOVERY IMPLEMENTATION PROGRAM

#### Legend

- Property Boundary
- County
- Airboat Ramp Construction

#### Management Action

- Aboveground Tree Removal
- Prescribed Fire
- Herbicide
- Shredding/Mowing
- Trees Cleared



0.5 Miles

#### TRACT 2008001 FY 2009 ACTIVITIES

Date: 1/13/2011  
By: TRT

Figure 1



**PLATTE RIVER**  
RECOVERY IMPLEMENTATION PROGRAM

Page Intentionally Left Blank



## 2009 Tract 2008002 Annual Work Report

### Platte River Recovery Implementation Program

For More Information Contact: Jerry F. Kenny, [kennyj@headwaterscorp.com](mailto:kennyj@headwaterscorp.com), (308) 237-5728

---

#### General Activities

- **Good Neighbor Policy** – *Coordinated with area landowners to provide information about Program actions and ensure that activities were conducted in accordance with Program’s good neighbor policy.*
- 

#### Species Habitat Activities

- **Improve Target Species Sand and Water Habitat** – *Increased the amount of land cover types that are shown to be used by whooping cranes, least terns, and piping plovers by improving the channel width within the active channel. Removed 50,000 CY from 14 acre island and cleared 29 acres of trees. Burned and buried trees cleared in 2008 from OCSW construction site.*
  - **Protecting Other Species of Concern** – *Property was surveyed by FWS personnel and no Platte River caddisfly population were identified.*
- 

#### Operations and Maintenance Activities

- **Basic Property Maintenance Obligations and Needs** – *Controlled noxious weeds on property.*
  - **Agricultural Operations** – *Discussed fencing needs with NPPD.*
  - **North Channel Bridge** – *Completed alternatives analysis and conceptual design for bridge project.*
-

---

**Priority Area: General**

**Item(s): Complex Land Interest and Good Neighbor Policy**

No.	Activities for 2009	Budget Line Item	Completed	Cost (Estimated)	Actual Cost
CR1	Coordinated with area landowners to provide information about Program actions and ensure that activities were conducted in accordance with Program's good neighbor policy.	N/A	YES	N/A	N/A

**Priority Area: Species Habitat**

**Item(s): Tern, Plover and Whooping Crane Riverine Habitat**

	Activities for 2009	Budget Line Item	Completed	Cost (Estimated)	Actual Cost
CR2	Removal of 50,000 CY from 14 acre Island and cleared 29 acres of trees	LP-2	YES	\$147,600	\$52,200
CR3	Disk Channels	LP-4	NO <sup>1</sup>	\$5,000	\$0
CR4	Pre-emergent treatment of LT/PP nesting areas	LP-4	NO <sup>1</sup>	\$2,000	\$0
CR5	Fence LT/PP nesting areas	LP-4	NO <sup>2</sup>	\$5,000	\$0

<sup>1</sup>High water meant no disking and unable to get to islands to spray them and put up fence.

<sup>2</sup> Nesting areas were not fenced due to lack of target birds nesting.

---

**Priority Area: *Species Habitat*****Item(s): *Other Species of Concern***

Activities for 2009		Budget Line Item	Completed	Cost (Estimated)	Actual Cost
CR6	Habitat and species surveys on properties where work will occur	N/A	YES	N/A	N/A
CR7	Coordination with USFWS and NGPC to identify and mitigate potential impacts associated with 2009 land activities	N/A	YES	N/A	N/A

**Priority Area: *Operations and Maintenance*****Item(s): *Basic Property Maintenance Obligations and Needs***

Activities for 2009		Budget Line Item	Completed	Cost (Estimated)	Actual Cost
CR8	Controlled noxious weeds	LP-4	YES	\$20,000	\$3,985
CR9	Complete alternative analysis and conceptual design for bridge across north channel	LP-5	YES	\$30,000	\$25,765

**Priority Area: *Unplanned Expenses***

Tract Num	Activities in 2010	Item(s)	Budget Line Item	Cost
2008002	Burned and buried tree piles from 2008 clearing site for construction of OCSW	Species Habitat	LP-2	\$27,000

---

## 2009 Tract 2008001 Expense Summary

### *2009 Program Expenditures*

Expense Category	Budgeted	Expended
Planned	\$209,600	\$81,950
Unplanned	\$0	\$27,000
<b>Total</b>	<b>\$209,600</b>	<b>\$108,950</b>



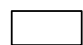



Base Layer: July 2010 PRRIP Aerial Imagery






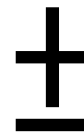
PLATTE RIVER  
RECOVERY IMPLEMENTATION PROGRAM


### Legend

-  Property Boundary
-  County

### Management Action

-  Island Construction
-  Tree Pile Removal
-  Trees Cleared



 Miles  
0.5

TRACT 2008002  
FY 2009 ACTIVITIES

Date: 1/13/2011  
By: TRT

Figure 1





**PLATTE RIVER**  
RECOVERY IMPLEMENTATION PROGRAM

Page Intentionally Left Blank



## 2009 New Property Annual Work Report

### Platte River Recovery Implementation Program

For More Information Contact: Jerry F. Kenny, [kennyj@headwaterscorp.com](mailto:kennyj@headwaterscorp.com), (308) 237-5728

---

#### General Activities

- ***Good Neighbor Policy*** – Coordinated with area landowners to provide information about Program actions and ensure that activities were conducted in accordance with Program's good neighbor policy.
- 

#### Species Habitat Activities

- ***Improve Target Species Sand and Water Habitat*** – Disked annual vegetation within main channel on Tract 2009003.
  - ***Protecting Other Species of Concern*** – Properties were surveyed by FWS personnel and no Platte River caddisfly population were identified.
- 

#### Operations and Maintenance Activities

- ***Basic Property Maintenance Obligations and Needs*** – Performed upgrades of cabin located on Tract 2009002.
  - ***Agricultural Operations*** – Performed cropland management in accordance with BMPs on Tracts 2009001, 2009002, and 2009004.
-

---

**Priority Area: General**

**Item(s): Complex Land Interest and Good Neighbor Policy**

No.	Activities for 2009	Budget Line Item	Completed	Actual Cost
NP1	Coordinated with area landowners to provide information about Program actions and ensure that activities were conducted in accordance with Program's good neighbor policy.	N/A	YES	N/A

**Priority Area: Species Habitat**

**Item(s): Tern, Plover and Whooping Crane Riverine Habitat**

	Activities for 2009	Budget Line Item	Completed	Actual Cost
NP2	Disk annual vegetation in channel on Tract 2009003	LP-4	YES	\$1,875

**Priority Area: Species Habitat**

**Item(s): Other Species of Concern**

	Activities for 2009	Budget Line Item	Completed	Actual Cost
NP3	Habitat and species surveys on properties where work will occur	N/A	YES	N/A
NP4	Coordination with USFWS and NGPC to identify and mitigate potential impacts associated with 2009 land activities	N/A	YES	N/A

---

**Priority Area:** *Operations and Maintenance*

**Item(s):** *Basic Property Maintenance Obligations and Needs*

Activities for 2009		Budget Line Item	Completed	Actual Cost
NP5	Tract 2009002 New electrical service, repairs to building and well	LP-4	YES	\$9,705
NP6	Tract 2009002 New Baker 4"x 4" unit with cap and 3" in well tank	LP-4	YES	\$2,007
NP7	Tract 2009002 Replace water line and drain. Install 2 frost proof hydrants.	LP-4	YES	\$1,749
NP8	Tract 2009002 Construction of concrete pad	LP-4	YES	\$7,460
NP9	Tract 2009002 Construction of retaining wall and pack driveway	LP-4	YES	\$3,488
NP10	Tract 2009002 Purchase storage container and delivery	LP-4	YES	\$1,850
NP11	Tract 2009002 Delivery and set up of storage container	LP-4	YES	\$1,500
NP12	Tract 2009002 Electricity for cabin	LP-4	YES	\$431
NP13	Tract 2009003 Electricity for lodge/ trailer house	LP-4	YES	\$350
NP14	Tract 2009003 Herbicide treatment of fallow crop fields	LP-4	YES	\$1,454

---

**Priority Area: Operations and Maintenance**

**Item(s): Agricultural Operations**

Activities for 2009		Budget Line Item	Completed	Actual Cost
NP15	Tract 2009004 Herbicide for 2009 corn crop	LP-4	YES	\$3,024
NP16	Tract 2009004 Fertilizer for 2009 corn crop	LP-4	YES	\$2,499
NP17	Tract 2009004 Insurance for 2009 corn crop	LP-4	YES	\$2,840
NP18	Tract 2009004 Herbicide for 2009-10 wheat crop	LP-4	YES	\$1,098
NP19	Tract 2009004 Fertilizer for 2009-10 wheat crop	LP-4	YES	\$6,458

---

## 2009 Tract 2009002 Expense Summary

### *2009 Program Expenditures*

Expense Category	Expended
Tract 2009002	\$28,190
Tract 2009003	\$3,679
Tract 2009004	\$15,919
<b>Total</b>	<b>\$47,788<sup>1</sup></b>

<sup>1</sup> Property tax expenses are not reported in annual work reports.

### *2009 Revenues to Program*

Priority Area	Item	Income
Operations and Maintenance	Tract 2009001 Cash Rent	\$14,247
Operations and Maintenance	Tract 2009002 Cash Rent	\$3,966
Operations and Maintenance	Tract 2009004 Crop Share	\$34,741
Operations and Maintenance	Tract 2009005 Grazing Rent	\$1,980
Operations and Maintenance	Tract 2009007 Cash Rent	\$3,818
<b>Total</b>		<b>\$58,752</b>