



PRRIP – ED OFFICE MEMORANDUM

TO: GOVERNANCE COMMITTEE
FROM: EXECUTIVE DIRECTOR'S OFFICE
SUBJECT: TRACT 1114 EVALUATION SUMMARY AND RECOMMENDATION
DATE: JUNE 5, 2012
CC: LAND ADVISORY COMMITTEE

I. REQUESTED GOVERNANCE COMMITTEE ACTION

The Land Advisory Committee (LAC) requests that the Governance Committee (GC) approve the initiation of formal negotiations for acquisition of tract 1114. The LAC also requests that the GC assign the negotiations to the Executive Director's Office and provide the Executive Director with instruction on acceptable acquisition terms.

II. LAC RECOMMENDATION

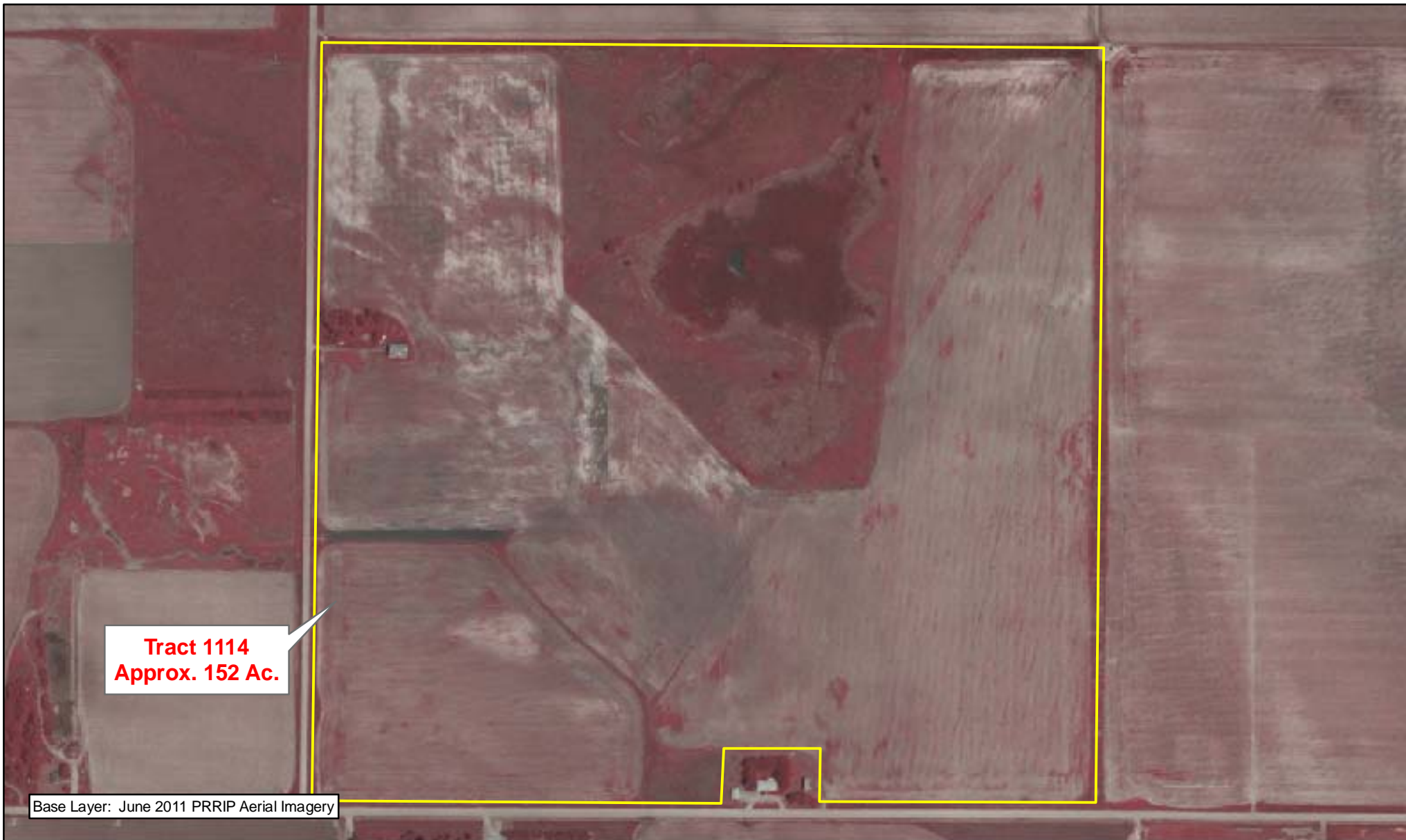
On April 24, 2012 the LAC voted to accept the evaluation team's recommendation and forward tract 1114 to the GC with a recommendation to continue with appraisal and negotiations. Tract 1114 is being pursued as non-complex habitat.

III. TRACT DESCRIPTION


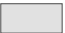







Tract 1114 is approximately 152 acres in size and is located in Section 32, T-9N, R-19W (Figure A-1). The tract is located in the Overton to Elm Creek bridge segment approximately one mile north of the main channel of the Platte River.

IV. HABITAT CONSIDERATIONS


The evaluation team recommends that the entire tract be considered as non-complex acres. Tract 1114 provides existing palustrine wetland habitat, buffered by cropland, with potential for some expansion. Restoration activities could include clearing of scattered woody vegetation from the wetland area, seeding the buffer area to native prairie grasses, and removal of a dilapidated barn building on the west boundary. If necessary, some improvements to the hydrology of the site could be pursued through modifications of the cropfield drainage system and an on-site irrigation reuse pit by redirecting water towards the wetland. This tract also includes 51.82 NRD certified irrigated acres.



Legend

 Tract 1114	 Audubon	 PRRIP
 CNPPID	 PRWCT	
 NGPC	 TNC	
 NPPD	 Wyoming	

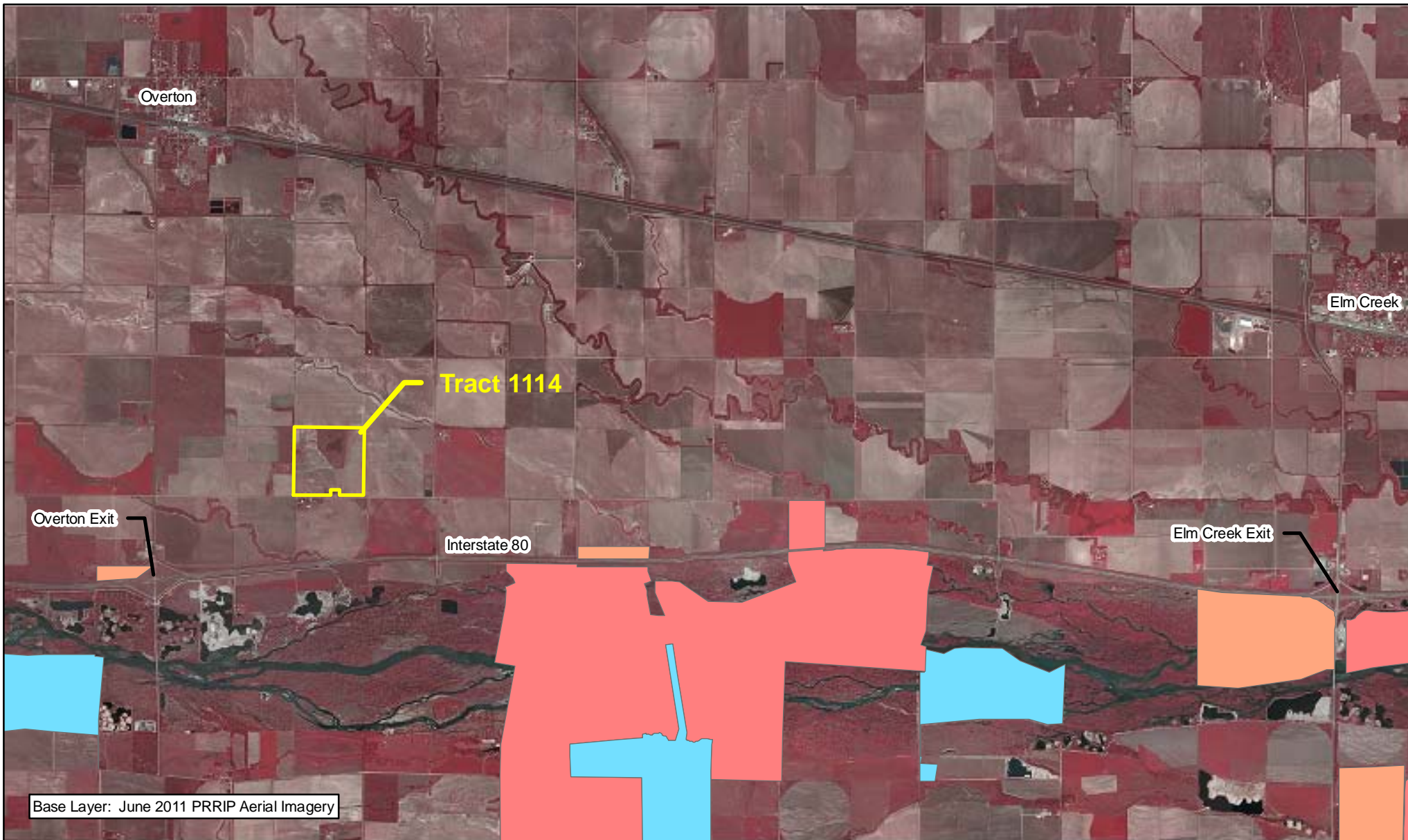


 Miles
0.1

**TRACT 1114
BOUNDARY MAP**

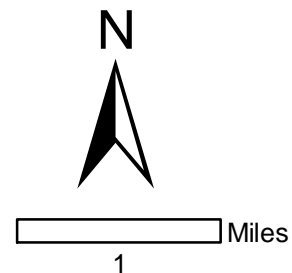
Date: 04/16/12
By: JDB

Figure A-1



Legend

Tract 1114	Audubon	PRRIP
CNPPID	PRWCT	
NGPC	TNC	
NPPD	Wyoming	



TRACT 1114 LOCATION MAP

Date: 04/16/12
By: JDB

Figure A-2