



PRRIP – ED OFFICE MEMORANDUM

TO: GOVERNANCE COMMITTEE
FROM: EXECUTIVE DIRECTOR'S OFFICE
SUBJECT: TRACT 1210 EVALUATION SUMMARY AND RECOMMENDATION
DATE: JUNE 5, 2012
CC: LAND ADVISORY COMMITTEE

I. REQUESTED GOVERNANCE COMMITTEE ACTION

The Land Advisory Committee (LAC) requests that the Governance Committee (GC) approve the initiation of formal negotiations for acquisition of tract 1210. The LAC also requests that the GC assign the negotiations to the Executive Director's Office and provide the Executive Director with instruction on acceptable acquisition terms.

II. LAC RECOMMENDATION

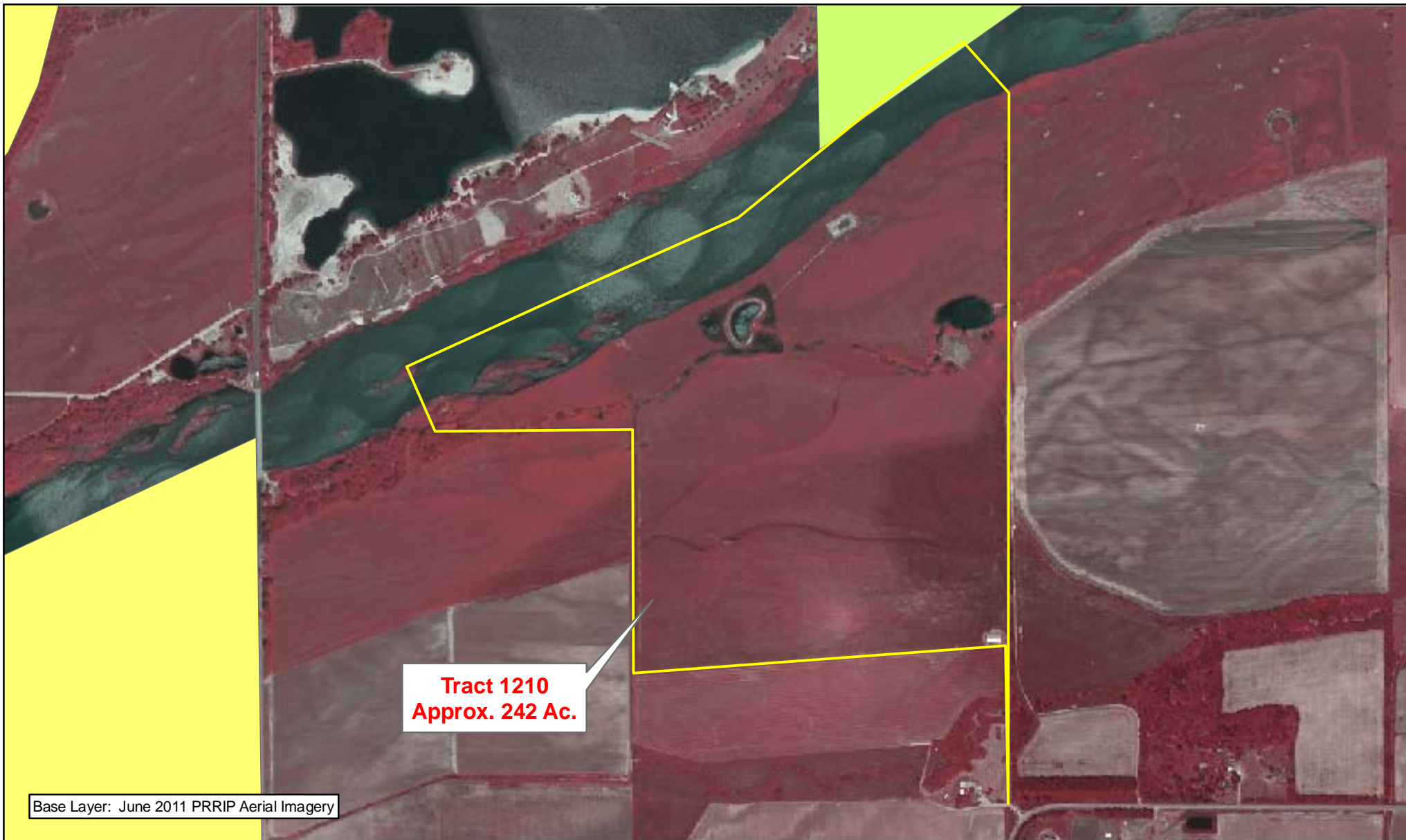
On April 24, 2012 the LAC voted to accept the evaluation team's recommendation and forward tract 1210 to the GC with a recommendation to continue with appraisal and negotiations. Tract 1210 is being pursued as complex habitat.

III. TRACT DESCRIPTION

Tract 1210 is approximately 242 acres in size and is located in Sections 6 and 7, T-9N, R-10W (Figure A-1). The tract is located in the Alda to Grand Island bridge segment, across the river from a portion of The Crane Trust's main holdings (Figure A-2).

IV. HABITAT CONSIDERATIONS

The evaluation team recommends that the entire tract be considered as habitat complex acres. Tract 1210 provides wet meadow grassland habitat and quality river channel habitat with little necessary restoration efforts. It is located partially adjacent to Crane Trust land on the opposite side of the river, and in a reach of river that has been mechanically maintained for a number of years.



Legend

Tract 1210	Audubon	PRRIP
CNPPID	PRWCT	
NGPC	TNC	
NPPD	Wyoming	

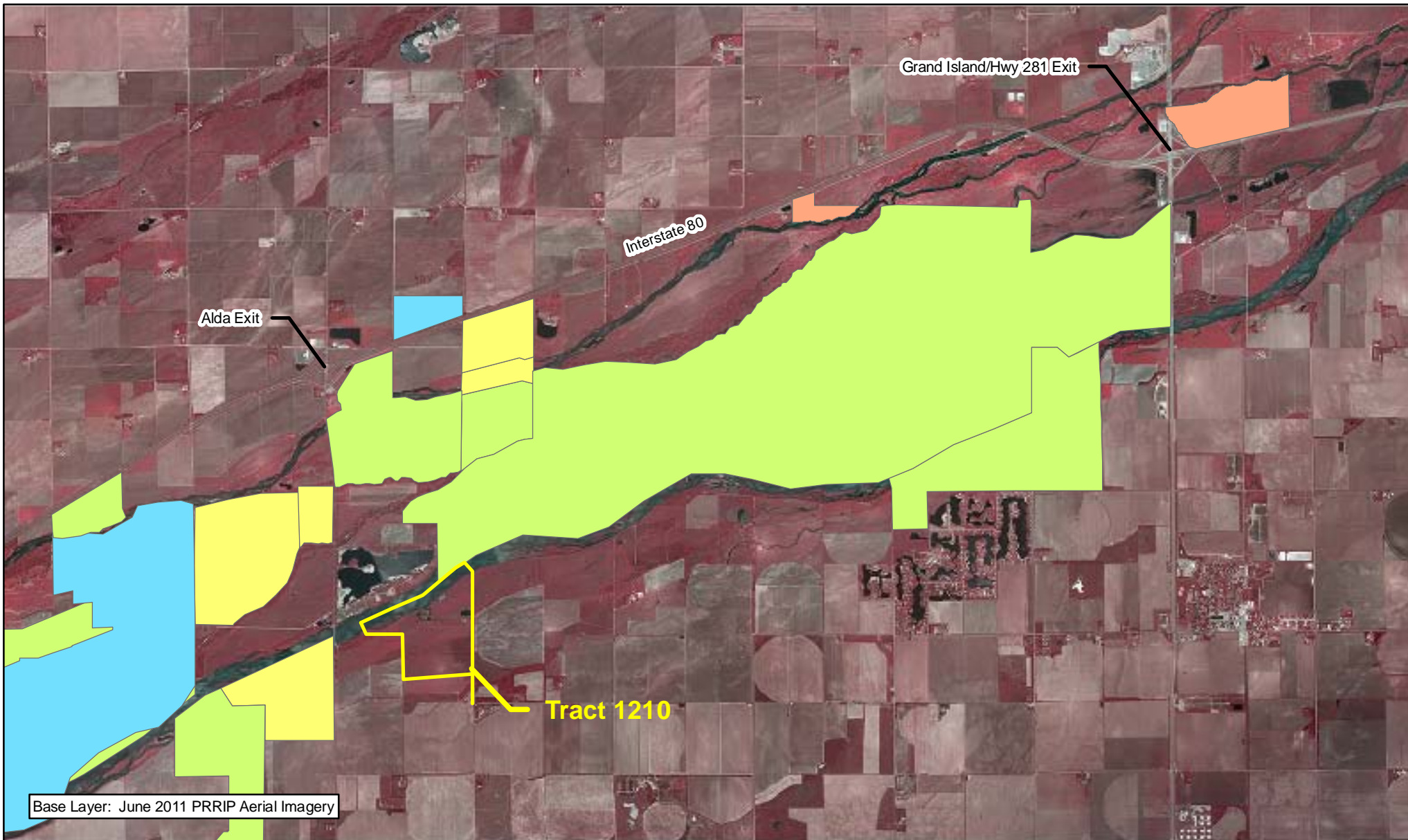


Miles
0.25

TRACT 1210 BOUNDARY MAP

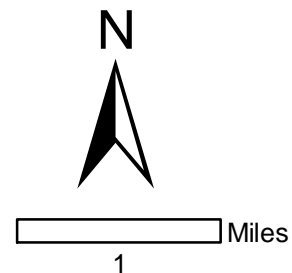
Date: 04/16/12
By: JDB

Figure A-1



Legend

Tract 1210	Audubon	PRRIP
CNPPID	PRWCT	
NGPC	TNC	
NPPD	Wyoming	



TRACT 1210 LOCATION MAP

Date: 04/16/12
By: JDB

Figure A-2