



---

**PRRIP – ED OFFICE MEMORANDUM**

**TO:** GOVERNANCE COMMITTEE  
**FROM:** EXECUTIVE DIRECTOR'S OFFICE  
**SUBJECT:** TRACTS 1101 & 1102 EVALUATION SUMMARY AND RECOMMENDATION  
**DATE:** JUNE 9, 2011

---

**REQUESTED GOVERNANCE COMMITTEE ACTION**

The Land Advisory Committee (LAC) requests that the Governance Committee (GC) approve the initiation of formal negotiations to acquire fee simple title to Tracts 1101 and 1102. The LAC also requests that the GC assign the negotiation to the Executive Director's Office and provide the Executive Director with instruction on acceptable acquisition terms.

**LAC RECOMMENDATION**

On April 6, 2011, the LAC voted to forward Tracts 1101 and 1102 to the Governance Committee with a recommendation to pursue acquisition as complex habitat.

**TRACT DESCRIPTION**

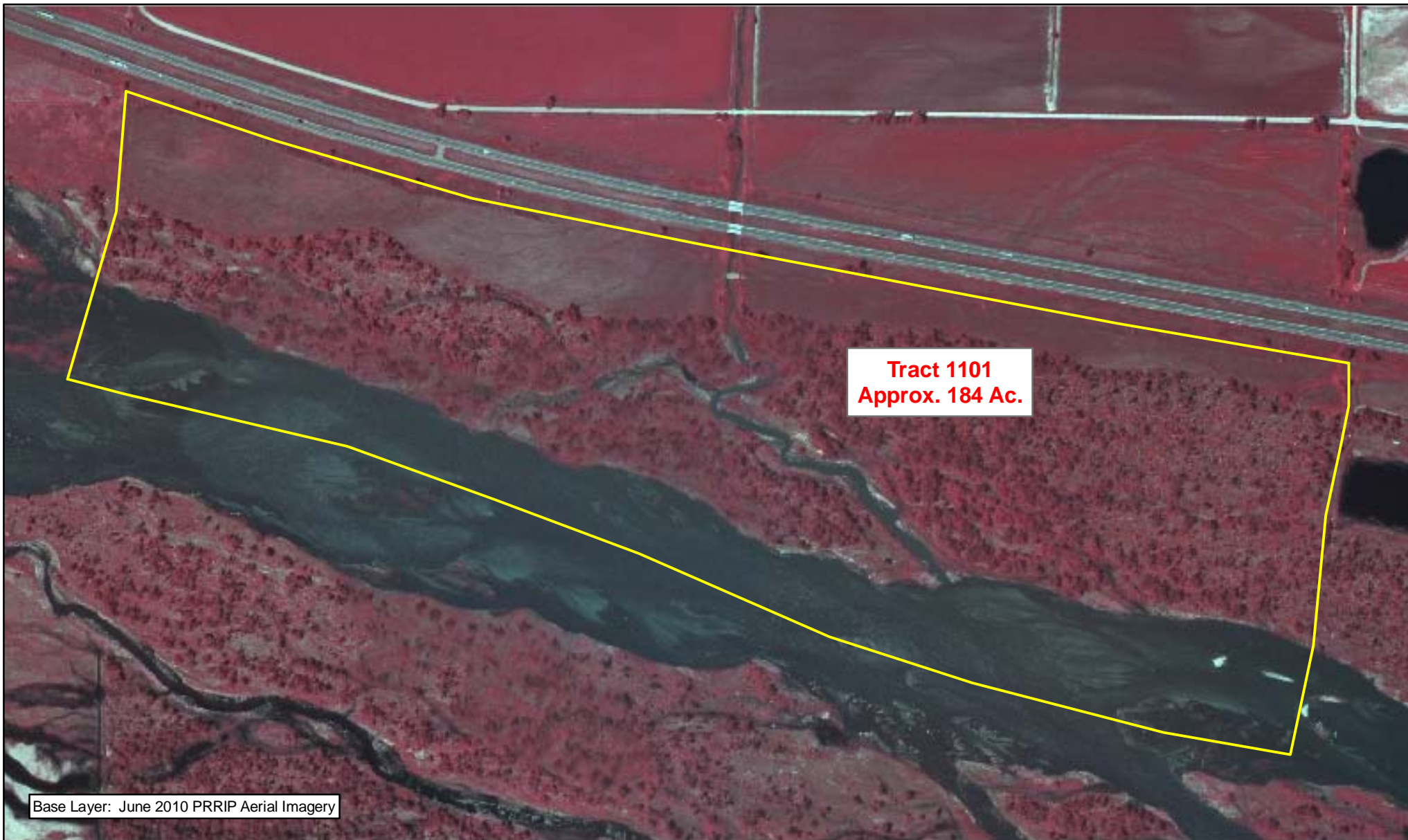
Tract 1101 is approximately 184 acres in size and is located in Section 12, T-8N, R-18W. Figure A-1 delineates the property boundary. Tract 1102 is approximately 718 acres in size and is located in Sections 11 and 14, T-8N, R-18W (Figure 2). These tracts are located in the Elm Creek to Odessa bridge segment and serve to further fill out the Program's "Elm Creek Complex." (Figure 3).

**HABITAT CONSIDERATIONS**

The Evaluation Team recommends that Tracts 1101 and 1102 be acquired as complex habitat. The addition of these two properties would place approximately 1,260 contiguous acres under Program ownership in the Elm Creek Complex, including both sides of the river across 1.5 miles and one side of the river over an additional 0.5 miles.

Tract 1101 would be primarily acquired as river channel habitat and buffer. It is likely that only general property maintenance (grazing, BMPs), would occur outside the channel area. In-channel, potential restoration activities might include clearing trees back from the bank in order to maintain open-view widths for whooping crane habitat. This action would need to be carefully planned such that the buffer to Interstate 80 is maintained.


Tract 1102 has had much restoration work completed over the past several years and should not need to change significantly. Some modification of the wetland sloughs and adjacent grassland areas might be required in order to more closely resemble wetland or wet meadow habitat that might be used by whooping cranes. This activity may include further excavation to shallow the slopes of these sloughs as they are currently deep and flowing; or creation of additional wetland habitat elsewhere in the property if modification is not allowed by existing management encumbrances. In addition, the grassland areas of this tract are prone to invasion by shrubby species and some invasives including leafy spurge. These areas will need an active plan for control.



### Legend

 Tract 1101

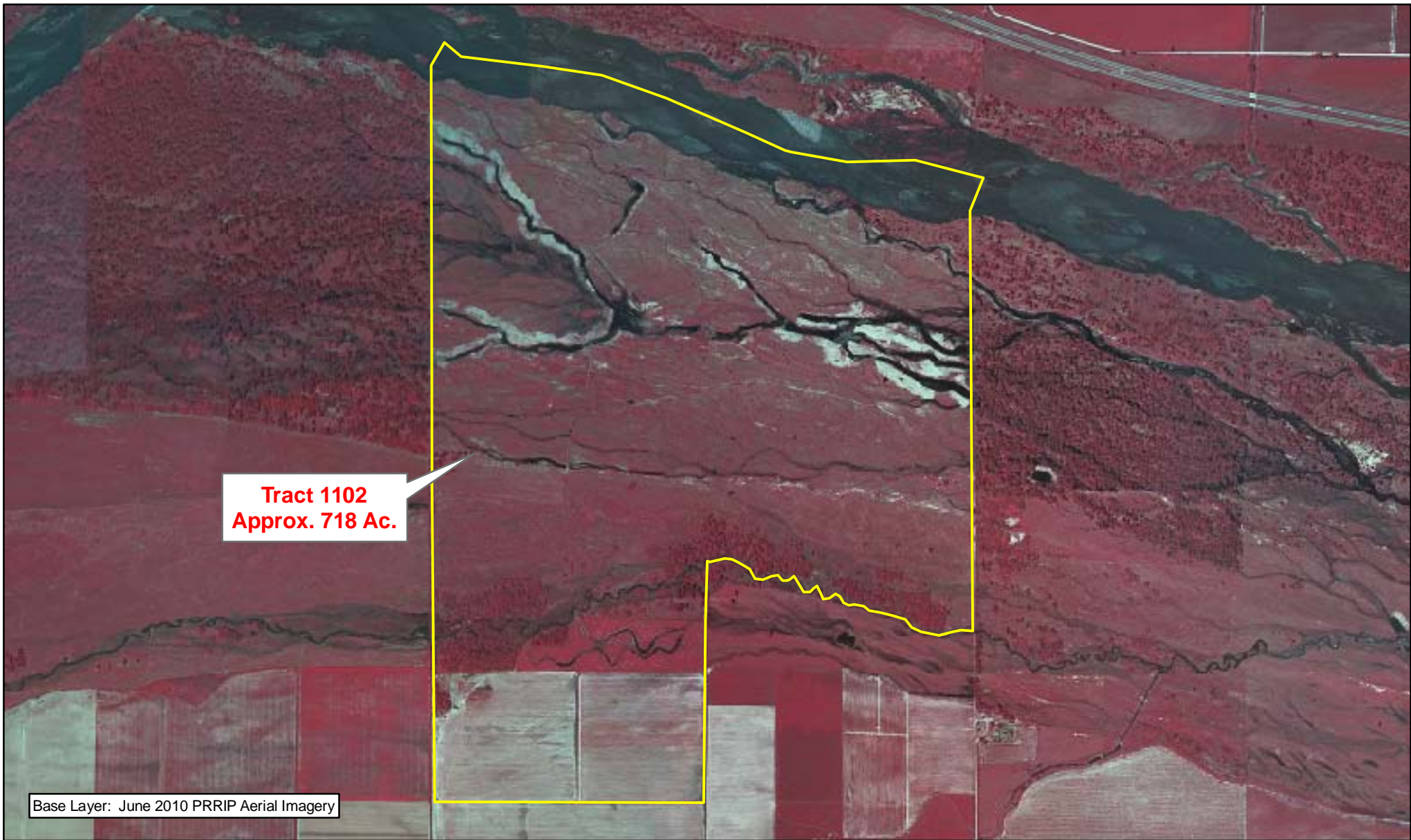



 Miles  
0.2

### TRACT 1101 BOUNDARY MAP


Date: 03/28/11  
By: JDB

Figure 1



**Legend**  
 Tract 1102

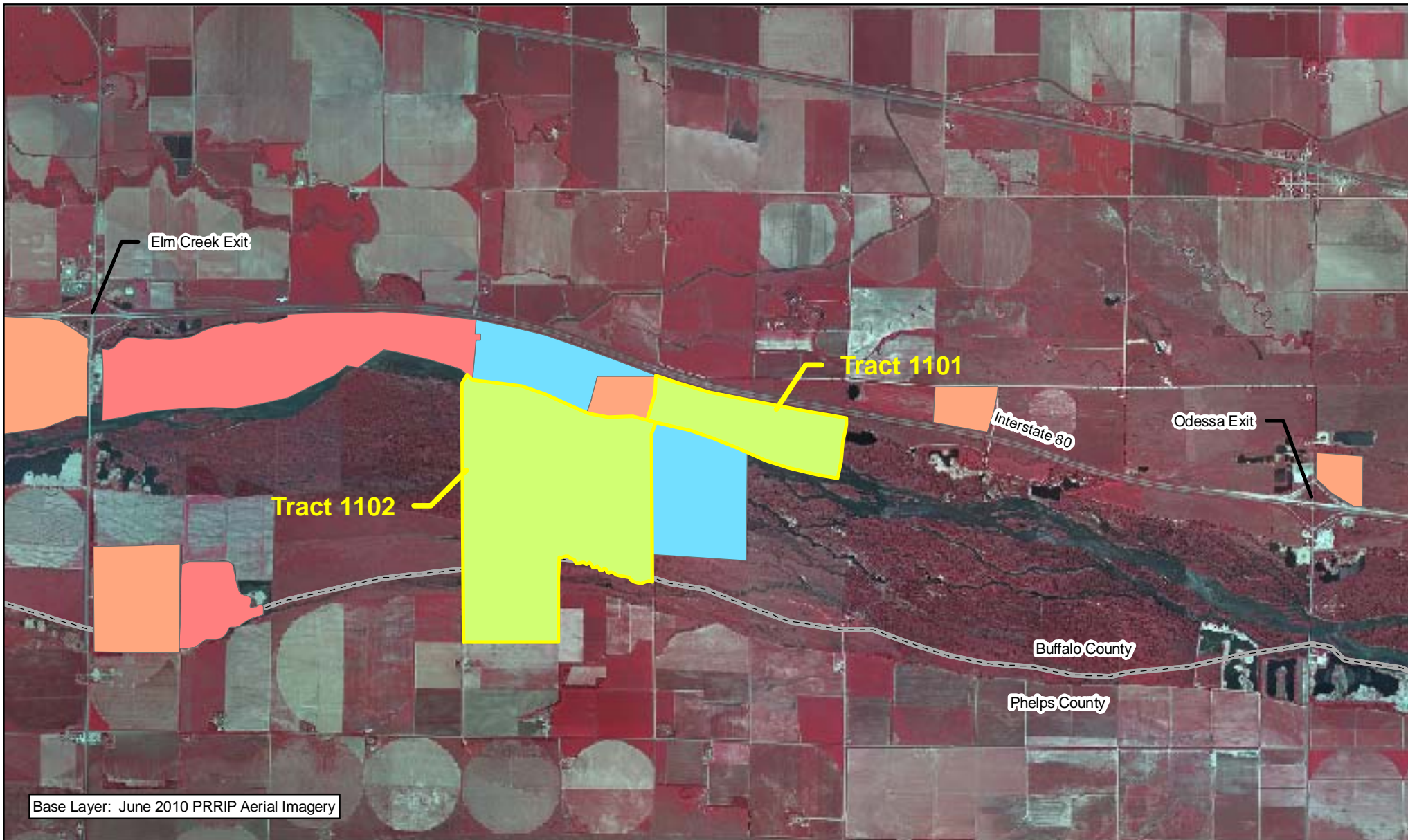


 Miles  
0.5

**TRACT 1102  
BOUNDARY MAP**

Date: 03/28/11  
By: JDB

**Figure 2**



### Legend

Evaluation Tracts	Audubon	PRRIP
County	CNPPID	PRWCT
NGPC	TNC	
NPPD	Wyoming	



Miles

1

### TRACT 1101/1102 LOCATION MAP

Date: 03/28/11  
By: JDB

Figure 3