



PRRIP – ED OFFICE MEMORANDUM

TO: GOVERNANCE COMMITTEE
FROM: EXECUTIVE DIRECTOR'S OFFICE
SUBJECT: TRACT 1220 EVALUATION SUMMARY AND RECOMMENDATION
DATE: DECEMBER 4, 2012
CC: LAND ADVISORY COMMITTEE

I. REQUESTED GOVERNANCE COMMITTEE ACTION

The Land Advisory Committee (LAC) requests that the Governance Committee (GC) approve the initiation of formal negotiations for acquisition of tract 1220. The LAC also requests that the GC assign the negotiations to the Executive Director's Office and provide the Executive Director with instruction on acceptable acquisition terms.

II. LAC RECOMMENDATION

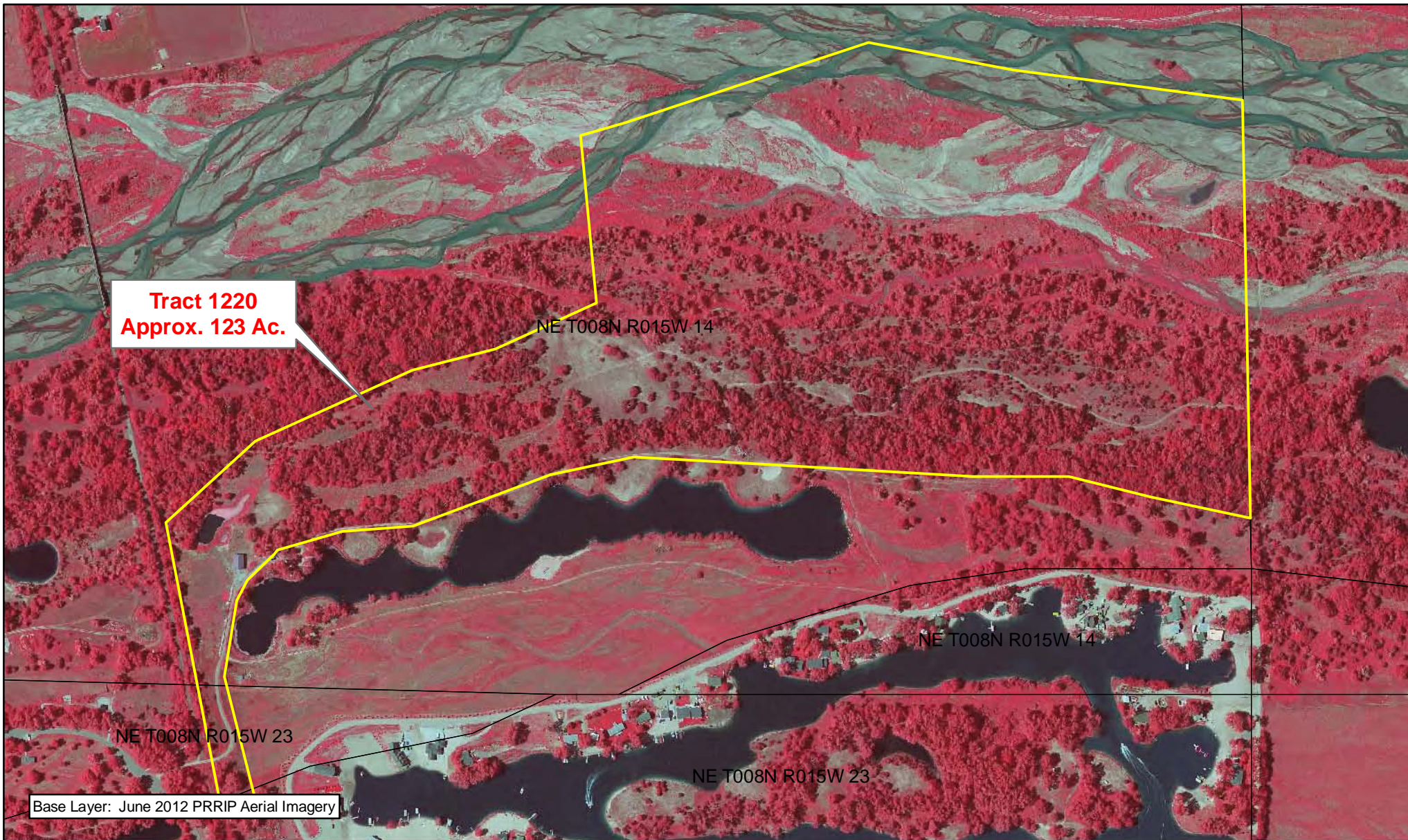
On October 2, 2012 the LAC voted to accept the evaluation team's recommendation and forward tract 1220 to the GC with a recommendation to continue with appraisal and negotiations. Tract 1220 is being pursued as complex habitat.

III. TRACT DESCRIPTION



Tract 1220 is approximately 123 acres in size and is located in Section 14, T-8N, R-15W. (Figure A-1). The tract is located in the Kearney to Minden bridge segment, across the river from the Program's tract 2009004 (Figure A-2).

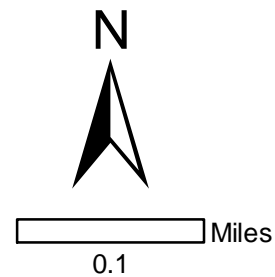
IV. HABITAT CONSIDERATIONS

The evaluation team recommends that the entire tract be considered as habitat complex acres. Tract 1220 provides river channel habitat and adds control of both sides of the river across ½ mile in the Fort Kearny Complex. Discussions with the landowner showed a willingness to discuss both lease and sale. The LAC felt the value of this tract to the Program was negatively impacted if only lease was offered, but still recommended continuing with negotiations. The LAC fully supported purchase of 1220 if the landowner is willing.



Legend

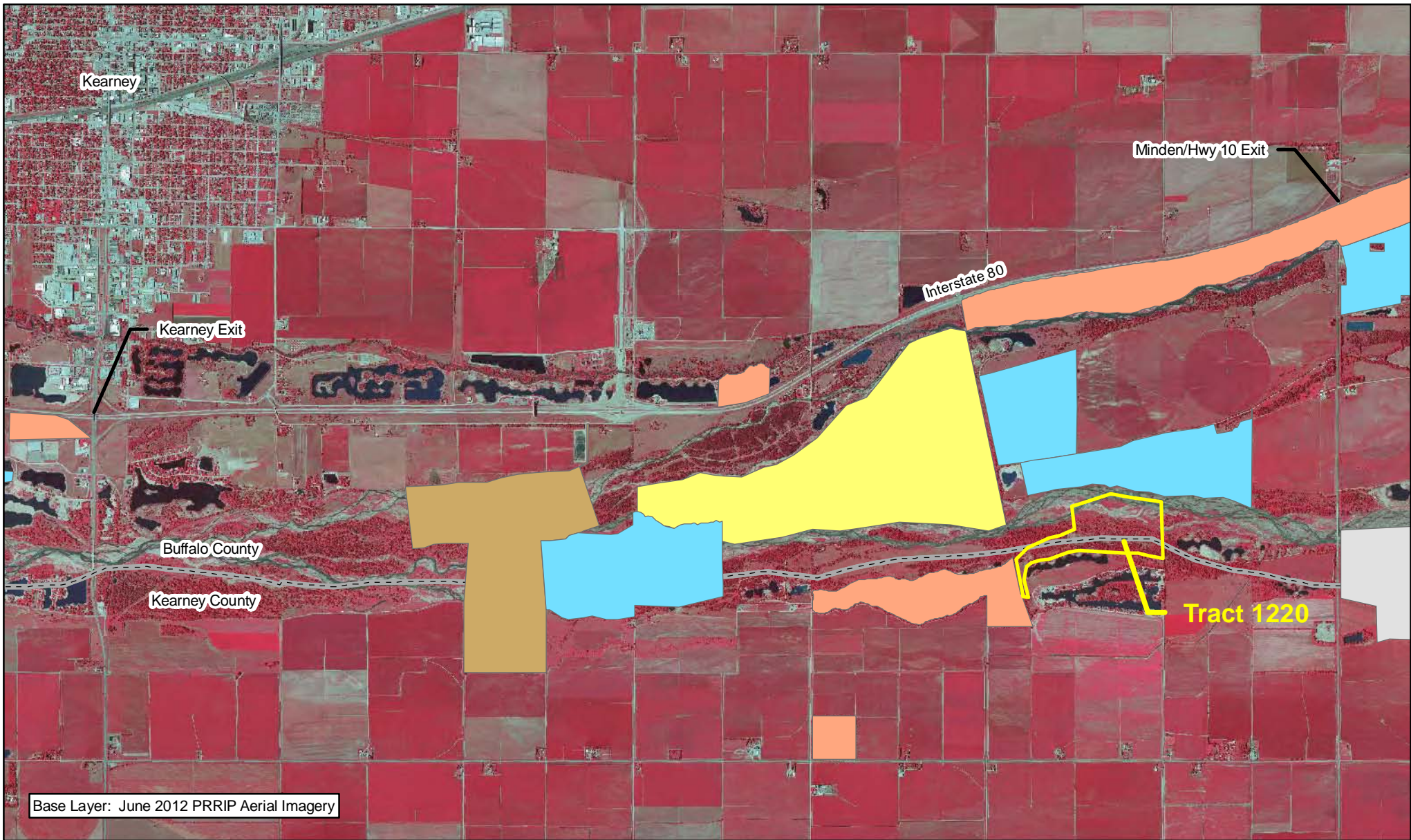
-  Tract 1220
-  Section



**TRACT 1220
BOUNDARY MAP**

Date: 09/13/12
By: JDB

Figure A-1



Legend

Tract 1220	Audubon	PRRIP
County	CNPPID	PRWCT
NGPC	TNC	
NPPD	Wyoming	



Miles

1

TRACT 1220 LOCATION MAP

Date: 09/13/12
By: JDB

Figure A-2