



PRRIP – ED OFFICE MEMORANDUM

TO: GOVERNANCE COMMITTEE
FROM: EXECUTIVE DIRECTOR'S OFFICE
SUBJECT: TRACT 1109 EVALUATION SUMMARY AND RECOMMENDATION
DATE: DECEMBER 5, 2011

REQUESTED GOVERNANCE COMMITTEE ACTION

The Land Advisory Committee (LAC) requests that the Governance Committee (GC) approve the initiation of appraisal and formal negotiations to acquire fee simple title to Tract 1109. The LAC also requests that the GC assign the negotiation to the Executive Director's Office and provide the Executive Director with instruction on acceptable acquisition terms.

LAC RECOMMENDATION

On October 28, 2011, the LAC voted to forward Tract 1109 to the Governance Committee with a recommendation to pursue acquisition as complex habitat.

TRACT DESCRIPTION

Tract 1109 is approximately 156 acres in size and is located in Section 13, T-8N, R-16W (Figure A-1). This tract lies within the Kearney to Minden (Hwy 10) bridge segment (Figure A-2).

HABITAT CONSIDERATIONS


The Evaluation Team supports the purchase of this property as complex habitat. Although it is not perfect, they believe there are enough positives associated with this property to continue the acquisition process. This tract has a history of target species use, as well as containing the beginning of a major flow split that affects the Program's Ft. Kearny complex downstream. Restoration activities on this tract would likely consist of in-channel vegetation removal and island clearing.



Legend

 Tract 1109

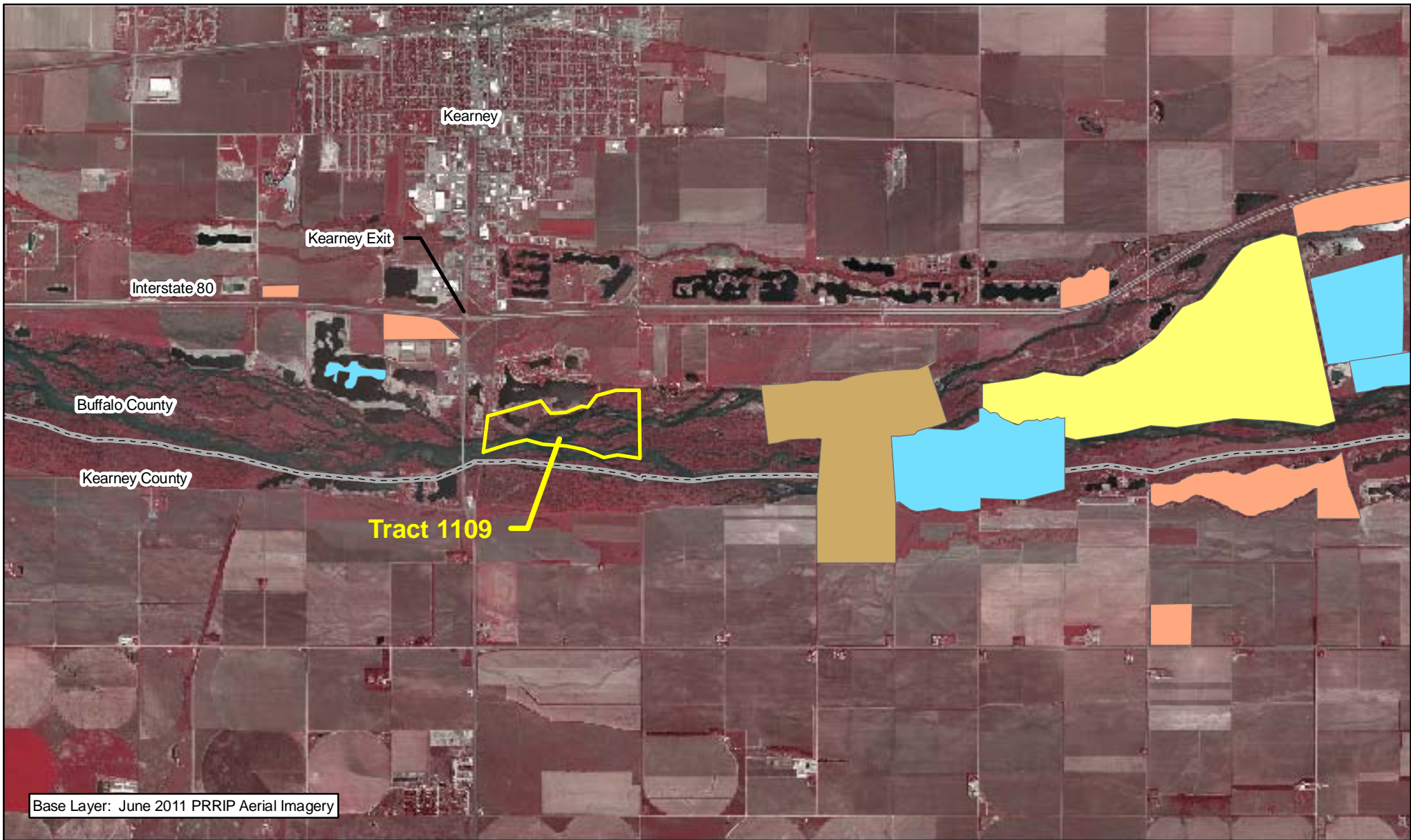


 Miles
0.1

TRACT 1109 BOUNDARY MAP

Date: 09/29/11
By: JDB

Figure A-1



Legend

Tract 1109	Audubon	PRRIP
County	CNPPID	PRWCT
NGPC	TNC	
NPPD	Wyoming	



Miles
1

TRACT 1109 LOCATION MAP

Date: 09/29/11
By: JDB

Figure A-2