



PRRIP – ED OFFICE MEMORANDUM

TO: GOVERNANCE COMMITTEE
FROM: EXECUTIVE DIRECTOR'S OFFICE
SUBJECT: TRACT 1010 EVALUATION SUMMARY AND RECOMMENDATION
DATE: NOVEMBER 30, 2010
CC: LAND ADVISORY COMMITTEE

REQUESTED GOVERNANCE COMMITTEE ACTION

The Land Advisory Committee (LAC) requests that the Governance Committee (GC) approve the initiation of appraisal and formal negotiations to acquire an interest in Tract 1010. The LAC also requests that the GC assign the negotiation to the Executive Director's Office and provide the Executive Director with instruction on acceptable acquisition terms.

LAC RECOMMENDATION

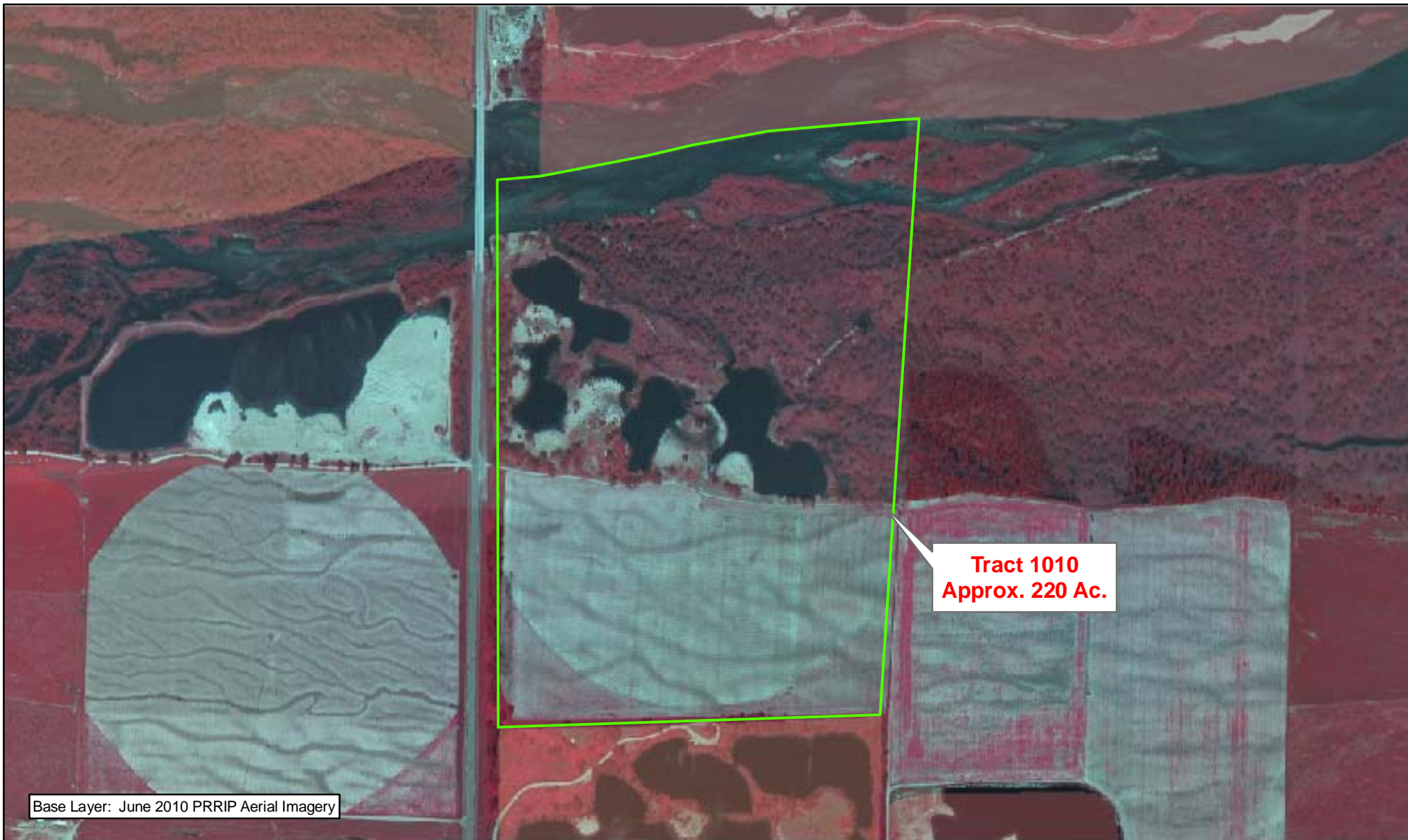
On October 8, 2010 the LAC voted unanimously to forward Tract 1010 to the Governance Committee with a recommendation to acquire as Program complex habitat. The LAC further recommends that the GC designate a minimal amount of land to retain for Program needs, with the intent to designate as excess and dispose of the remainder.

TRACT DESCRIPTION


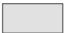







Tract 1010 is approximately 220 acres in size and is located in Sections 9, T-8N, R-18W (Figure A-1). The tract is located in the Elm Creek to Odessa bridge segment. Tract 1010 is located across the river channel south of Nebraska Public Power District's Blue Hole property (Figure A-2).

HABITAT CONSIDERATIONS


The Evaluation Team recommends that the entirety of Tract 1010 be considered as complex habitat. The primary function of tract 1010 will be as buffer for the Elm Creek complex.



Legend

	Tract 1010		Audubon		PRRIP
			CNPPID		PRWCT
			NGPC		TNC
			NPPD		Wyoming

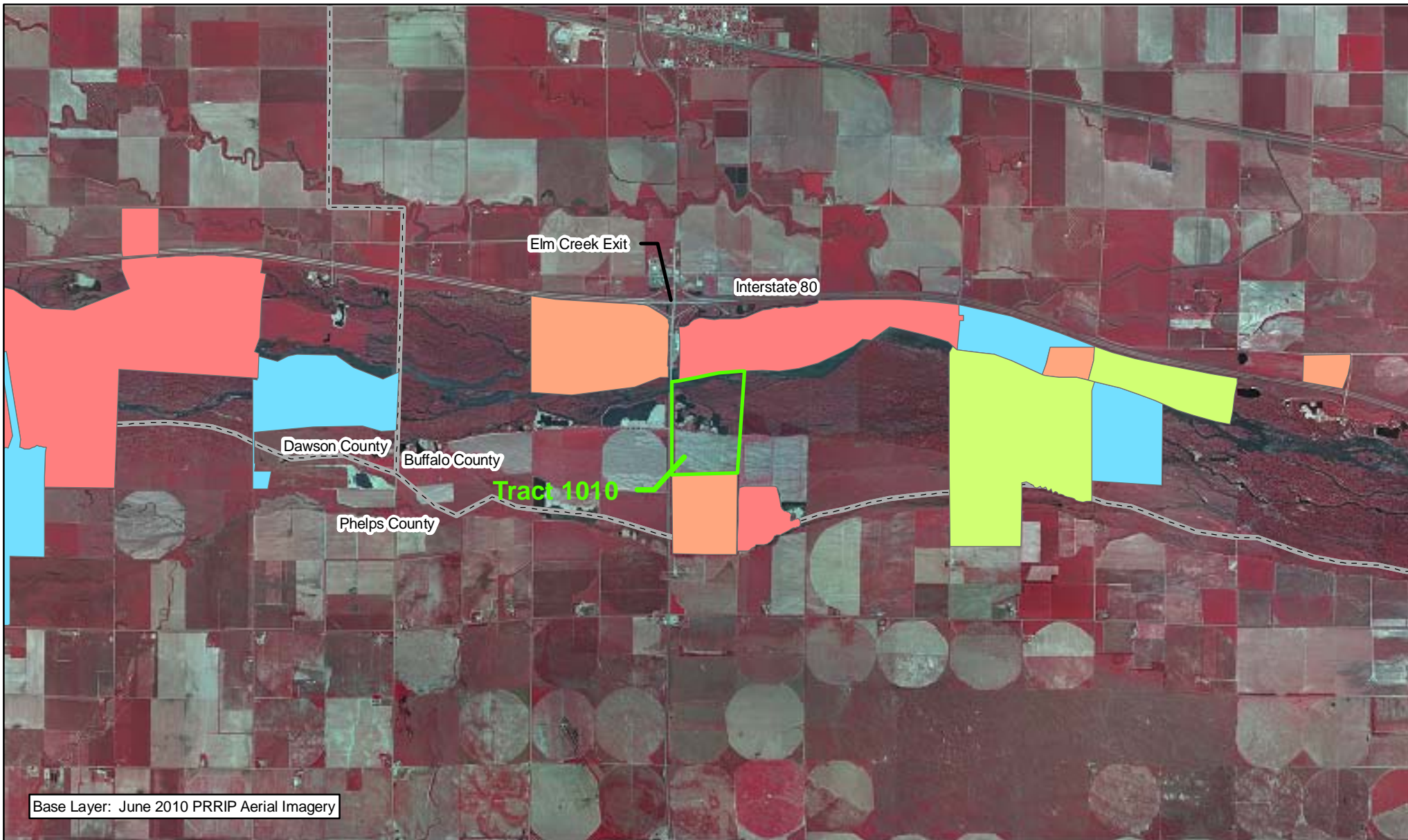


 Miles
0.25

TRACT 1010 BOUNDARY MAP

Date: 09/28/10
By: JDB

Figure A-1



Legend

Tract 1010	Audubon	PRRIP
County	CNPPID	PRWCT
	NGPC	TNC
	NPPD	Wyoming



Miles
1

TRACT 1010 LOCATION MAP

Date: 09/28/10
By: JDB

Figure A-2