



PRRIP – ED OFFICE MEMORANDUM

TO: GOVERNANCE COMMITTEE
FROM: EXECUTIVE DIRECTOR'S OFFICE
SUBJECT: TRACT 1007 EVALUATION SUMMARY AND RECOMMENDATION
DATE: NOVEMBER 30, 2010
CC: LAND ADVISORY COMMITTEE

REQUESTED GOVERNANCE COMMITTEE ACTION

The Land Advisory Committee (LAC) requests that the Governance Committee (GC) approve the initiation of formal negotiations to acquire a lease agreement for management of Tract 1007. The LAC also requests that the GC assign the negotiation to the Executive Director's Office and provide the Executive Director with instruction on acceptable acquisition terms.

LAC RECOMMENDATION

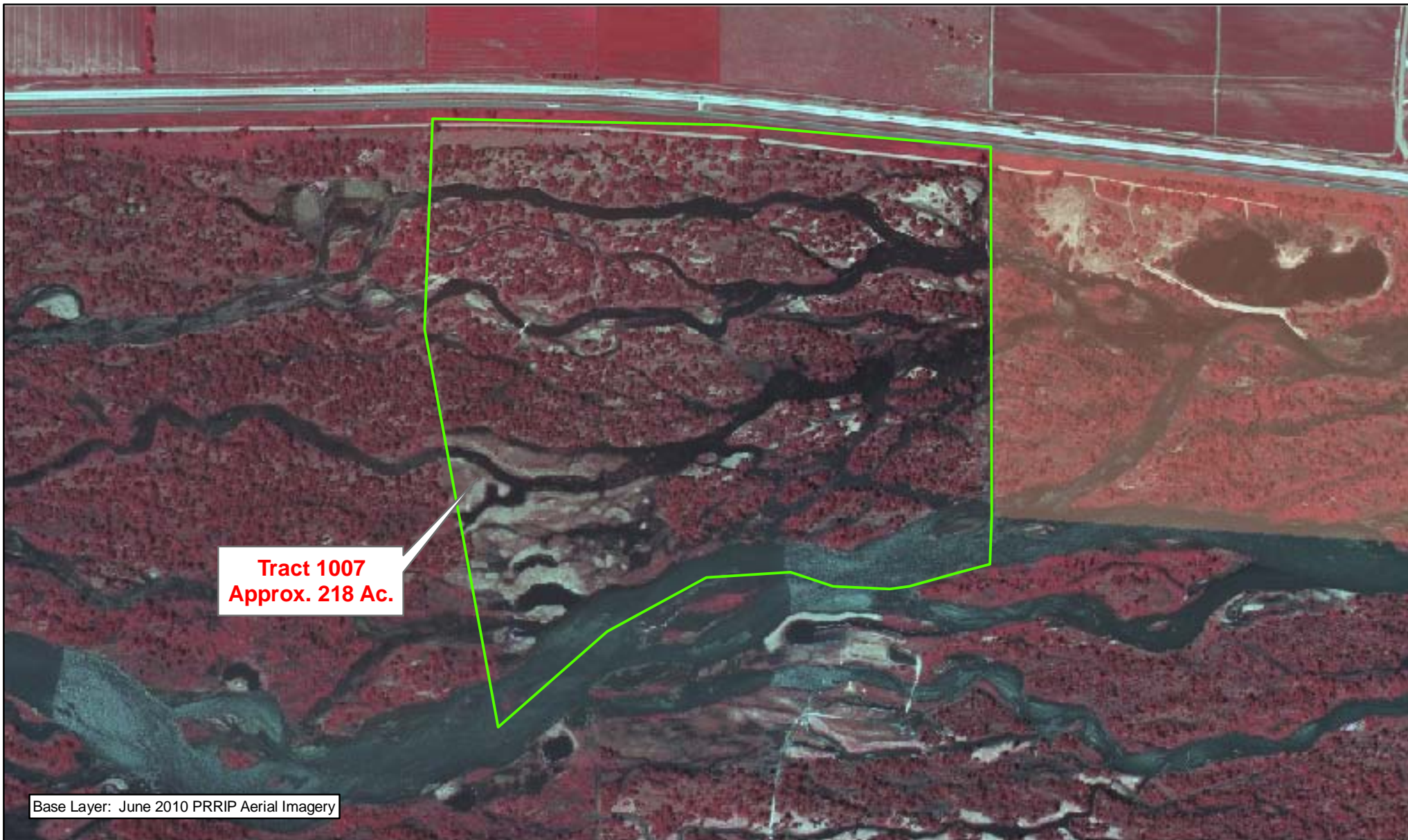
On October 8, 2010 the LAC voted unanimously to forward Tract 1007 to the Governance Committee with a recommendation to acquire a lease agreement for management as Program complex habitat.

TRACT DESCRIPTION


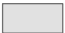







Tract 1007 is approximately 218 acres in size and is located in parts of sections 7 & 18, T-8N, R-16W and sections 12 & 13, T-8N, R-17W (Figure A-1). The tract is located in the Odessa to Kearney bridge segment. Tract 1007 is located adjacent to the Nebraska Game & Parks Commission's East Odessa WMA (Figure A-2).

HABITAT CONSIDERATIONS


The Evaluation Team recommends that the entirety of Tract 1007 be considered as complex habitat. The restoration activities necessary for species targets on this property are likely extensive, and the lease terms should provide the necessary control to accomplish that work.



Legend

 Tract 1007	 Audubon	 PRRIP
	 CNPPID	 PRWCT
	 NGPC	 TNC
	 NPPD	 Wyoming

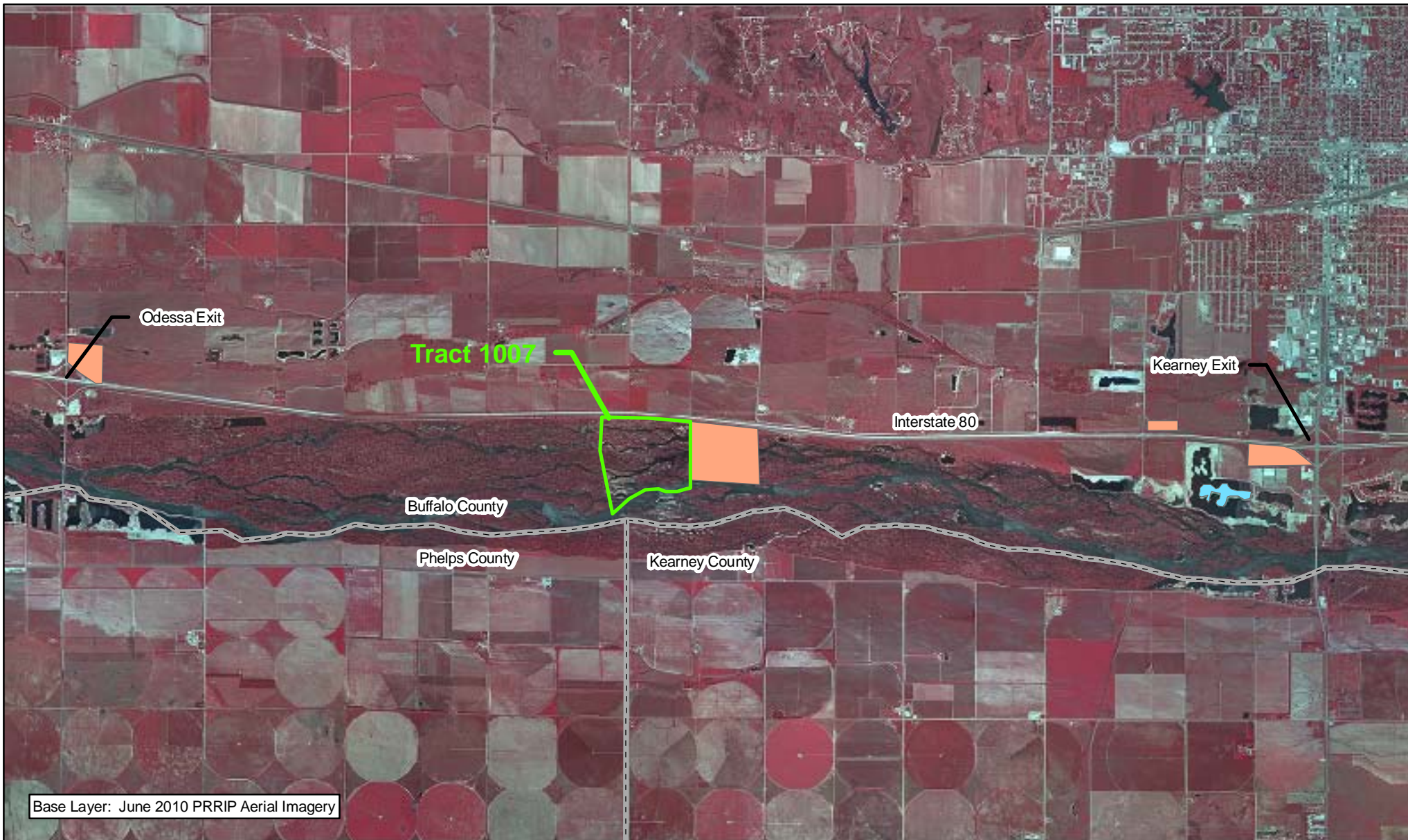


 Miles
0.1

TRACT 1007 BOUNDARY MAP

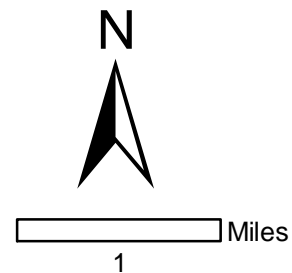
Date: 09/28/10
By: JDB

Figure A-1



Legend

Tract 1007	Audubon	PRRIP
County	CNPPID	PRWCT
NGPC	TNC	
NPPD	Wyoming	



TRACT 1007 LOCATION MAP

Date: 09/28/10
By: JDB

Figure A-2