



PRRIP – ED OFFICE MEMORANDUM

TO: GOVERNANCE COMMITTEE
FROM: EXECUTIVE DIRECTOR'S OFFICE
SUBJECT: TRACT 1402 EVALUATION SUMMARY AND RECOMMENDATION
DATE: JUNE 6, 2014
CC: LAND ADVISORY COMMITTEE

REQUESTED GOVERNANCE COMMITTEE ACTION

The Land Advisory Committee (LAC) requests that the Governance Committee (GC) cease pursuit of tract 1402.

LAC RECOMMENDATION

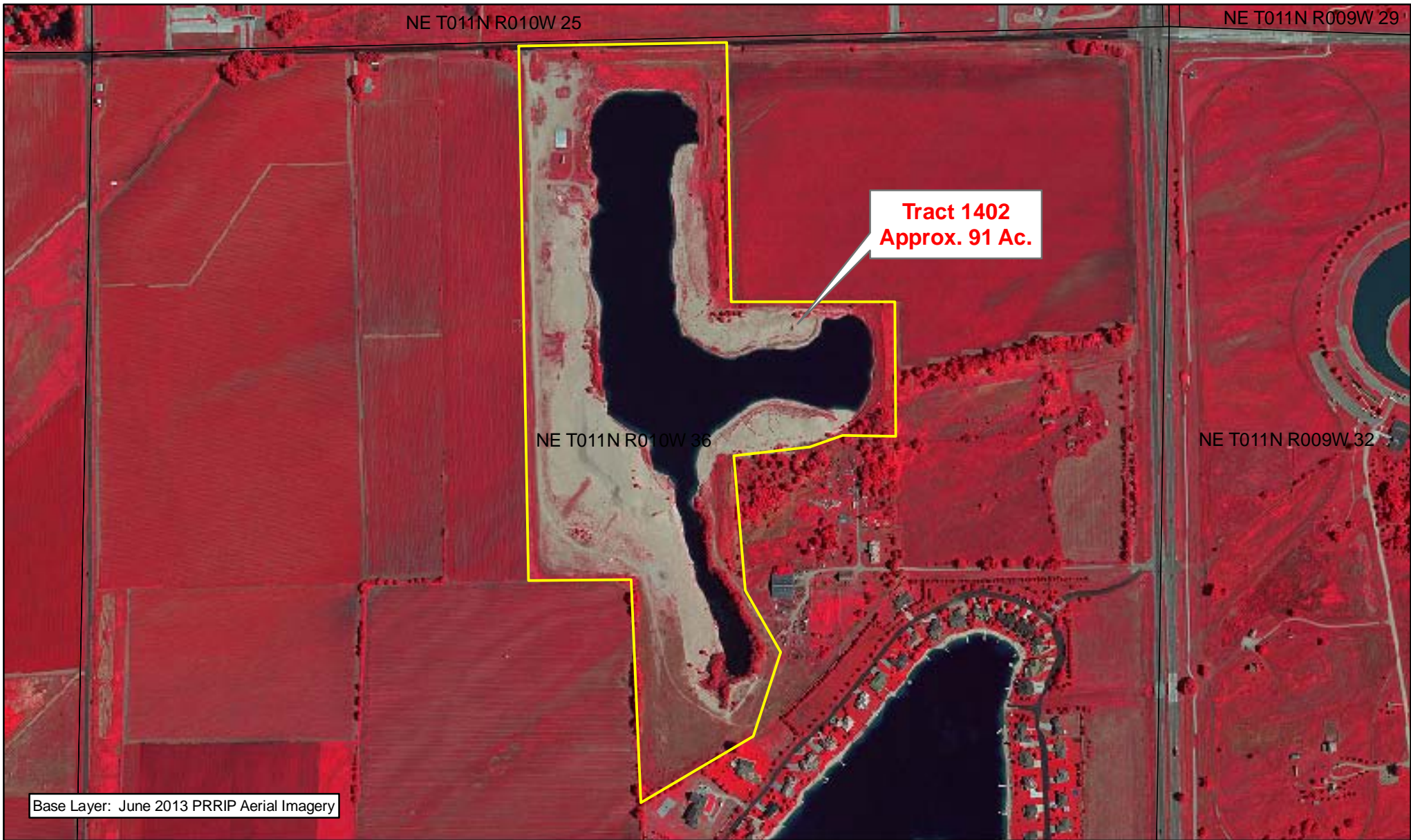
On June 6, 2014 the LAC voted unanimously recommend that the Governance Committee cease pursuit of tract 1402.

TRACT DESCRIPTION



Tract 1402 is approximately 91 acres in size and is located in section 36, T-11N, R-10W (Figure A-1). The tract is located in the Alda to Grand Island bridge segment (Figure A-2).

HABITAT CONSIDERATIONS


Tract 1402 was considered by the LAC as non-complex off channel sand and water nesting habitat for least terns and piping plovers. The LAC felt that tract 1402 does not represent ideal conditions for least tern and piping plover nesting for PRRIP. The tract is located over 3 miles from the river and, while this is within the allowable area, the team felt that this discounts the habitat value. Additionally, the existing sand configuration and condition (no peninsulas, very high ground compared to water with steep banks), the location adjacent to the residential area, and the fact that there has been no nesting history also factor into their opinion.



Legend

-  Tract 1402
-  Section

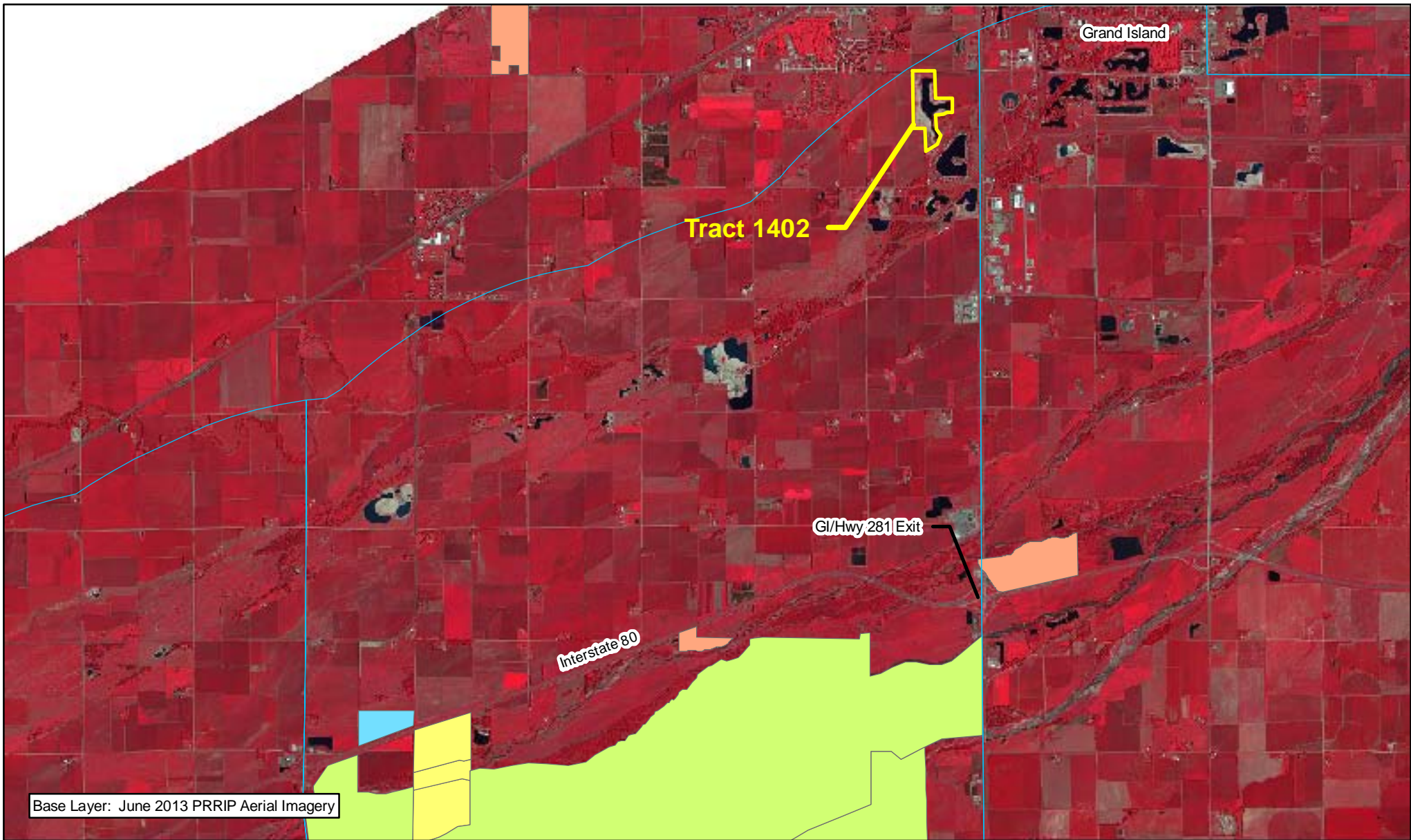


 Miles
0.1

**TRACT 1402
BOUNDARY MAP**

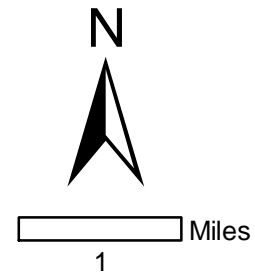
Date: 5/19/14
By: JDB

Figure A-1



Legend

Tract 1402	Audubon	PRRIP
Associated Habitat	CNPPID	PRWCT
	NGPC	TNC
	NPPD	Wyoming



TRACT 1402 LOCATION MAP

Date: 5/19/14
By: JDB

Figure A-2