



Short term Weather

Presentation to:

Water Availability Task Force Meeting

November 18, 2014

Bob Glancy, National Weather Service



Customize
Your
Weather.gov

Enter Your City, ST or
ZIP Code

☐ Remember Me

[Privacy Policy](#)

ACTIVE ALERTS FORECAST MAPS RADAR RIVERS, LAKES, RAINFALL AIR QUALITY SATELLITE PAST WEATHER

Created: 11/18/14 at 16:33 UTC

Click on the map above for detailed alerts or [Public Alerts in XML/CAP v1.1 and ATOM Formats](#)

Winter Storm Warning

High Wind Warning

Storm Warning

Lake Effect Snow Warning

Flash Flood Watch

Gale Warning

Heat Freeze Warning

Freeze Warning

Red Flag Warning

Freezing Rain Advisory

Winter Weather Advisory

Lake Effect Snow Advisory

Wind Chill Advisory

Flood Advisory

High Surf Advisory

Heavy Freezing Spray Warning

Dense Fog Advisory

Small Craft Advisory For Hazardous Seas

Small Craft Advisory For Winds

Small Craft Advisory

Brisk Wind Advisory

Lake Wind Advisory

Wind Advisory

Frost Advisory

Freezing Fog Advisory

Low Water Advisory

Rip Current Statement

Gale Watch

Flood Watch

Lake Effect Snow Watch

Freeze Watch

Fire Weather Watch

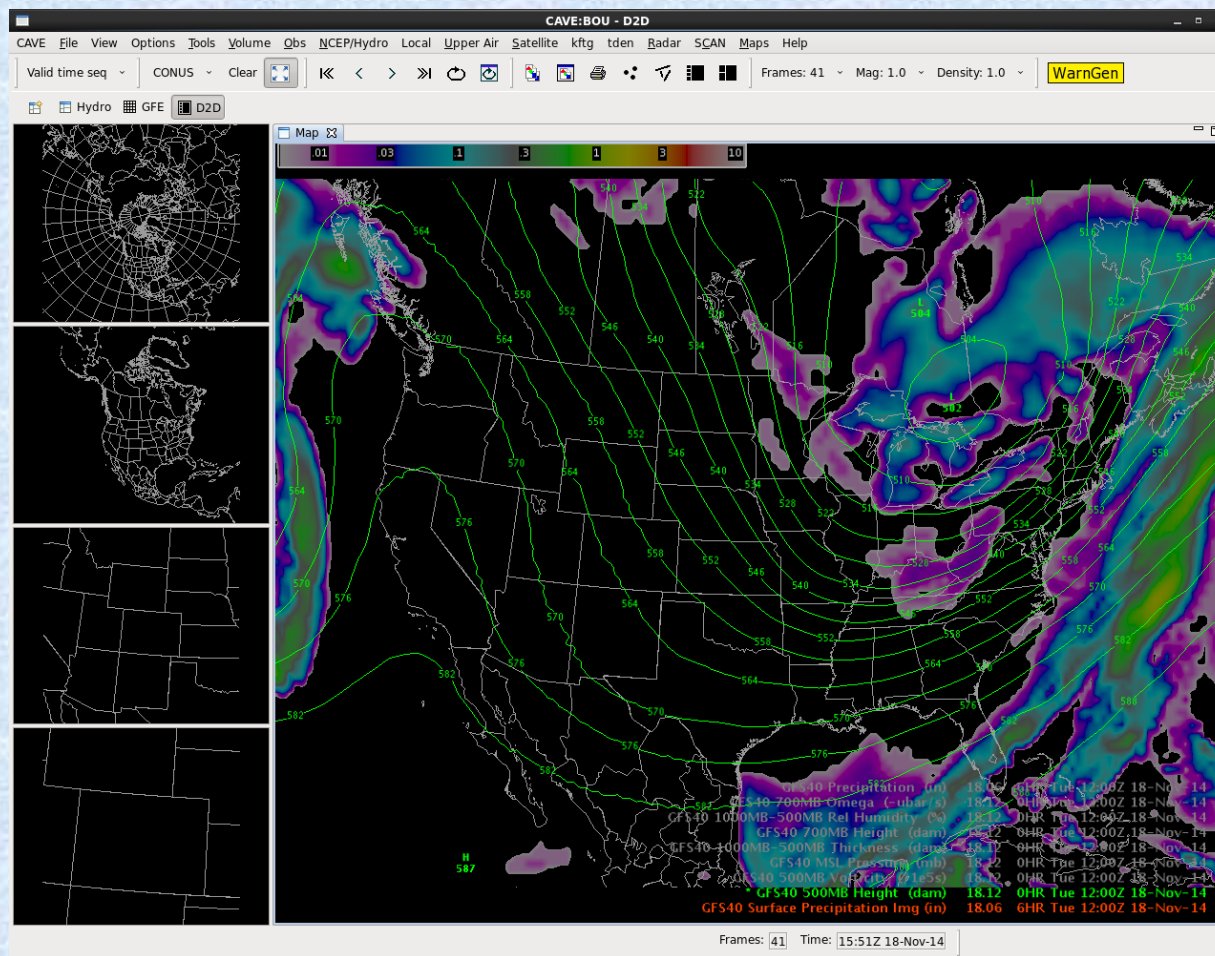
Coastal Flood Statement

Special Weather Statement

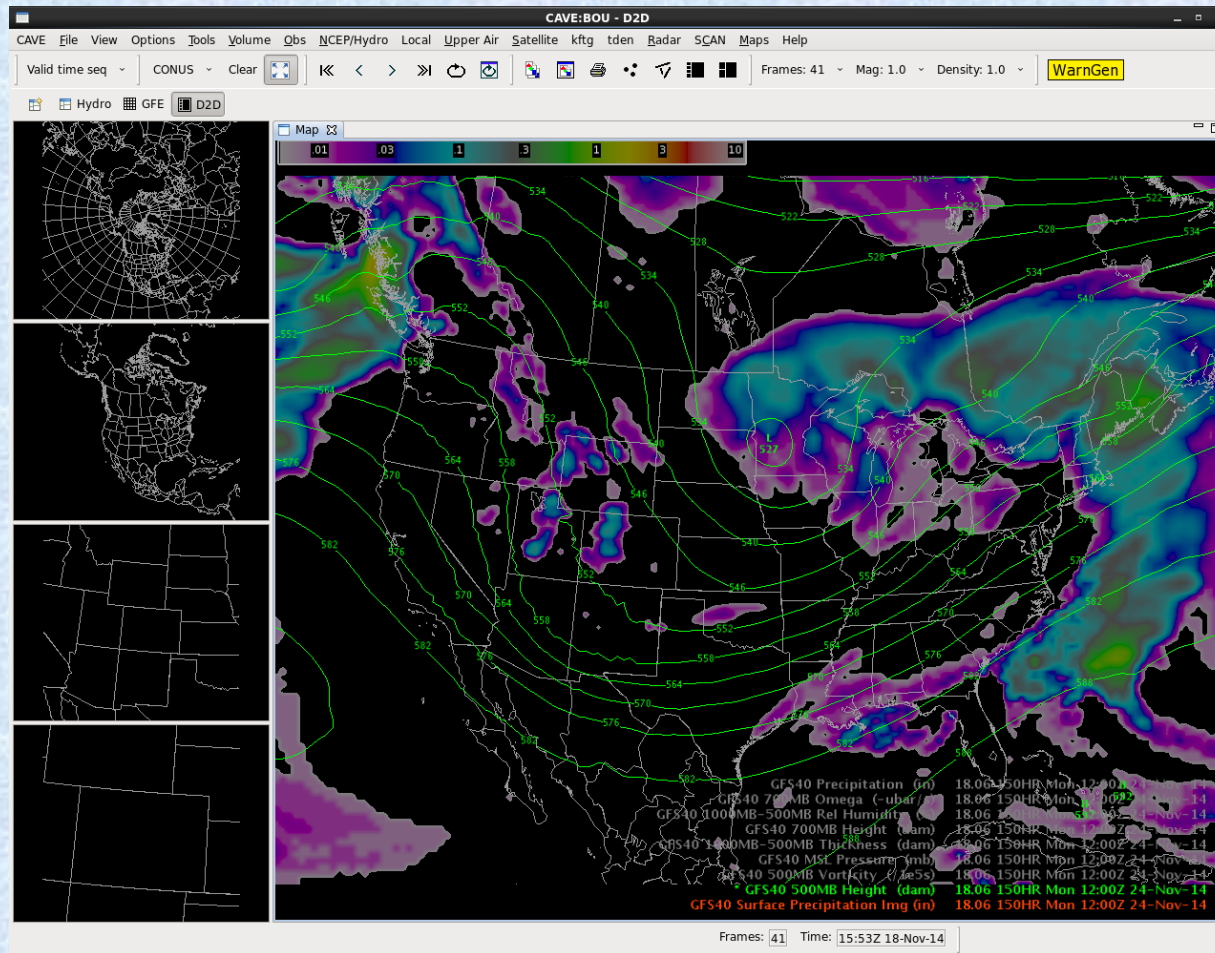
Air Quality Alert

Air Stagnation Advisory

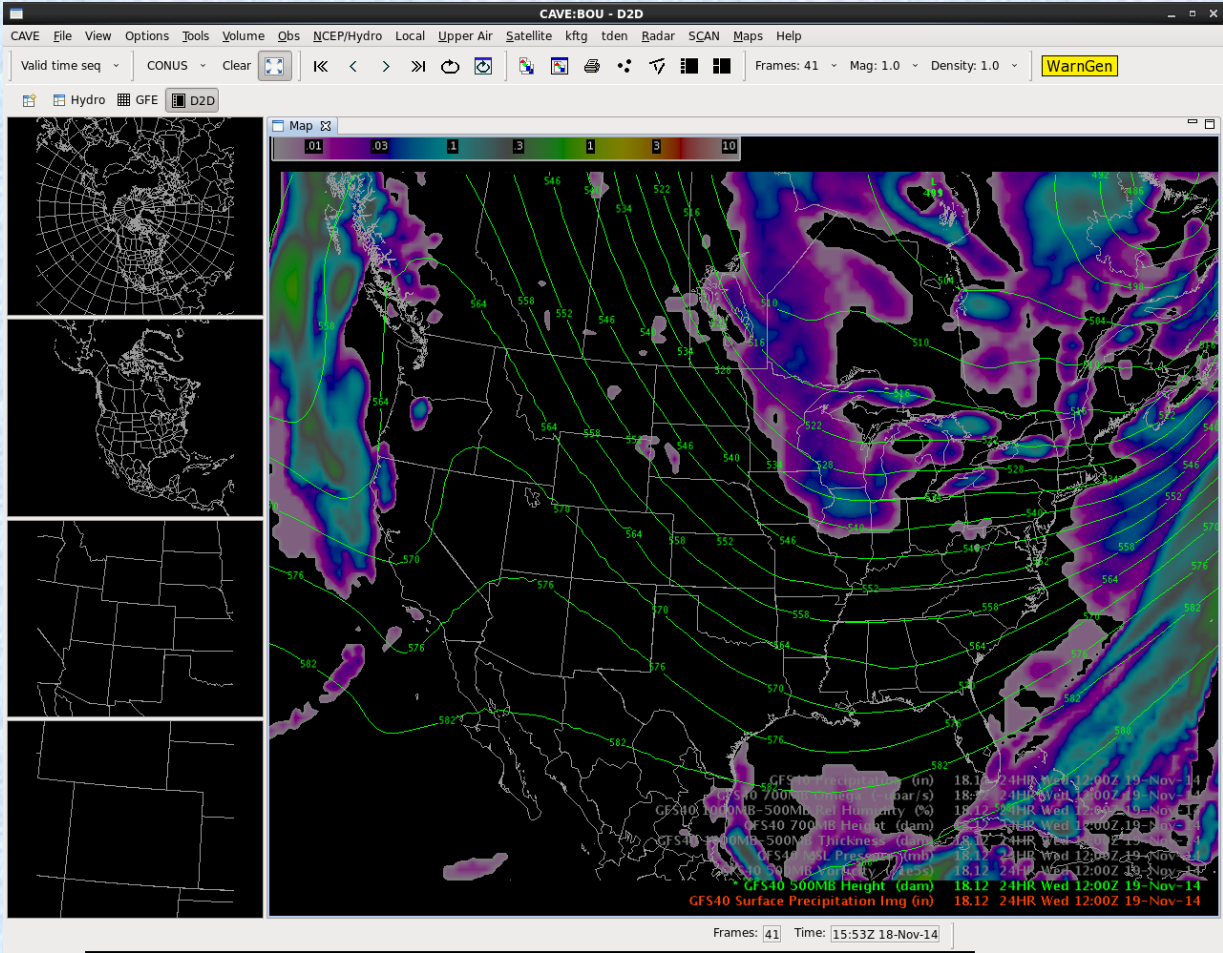
Today



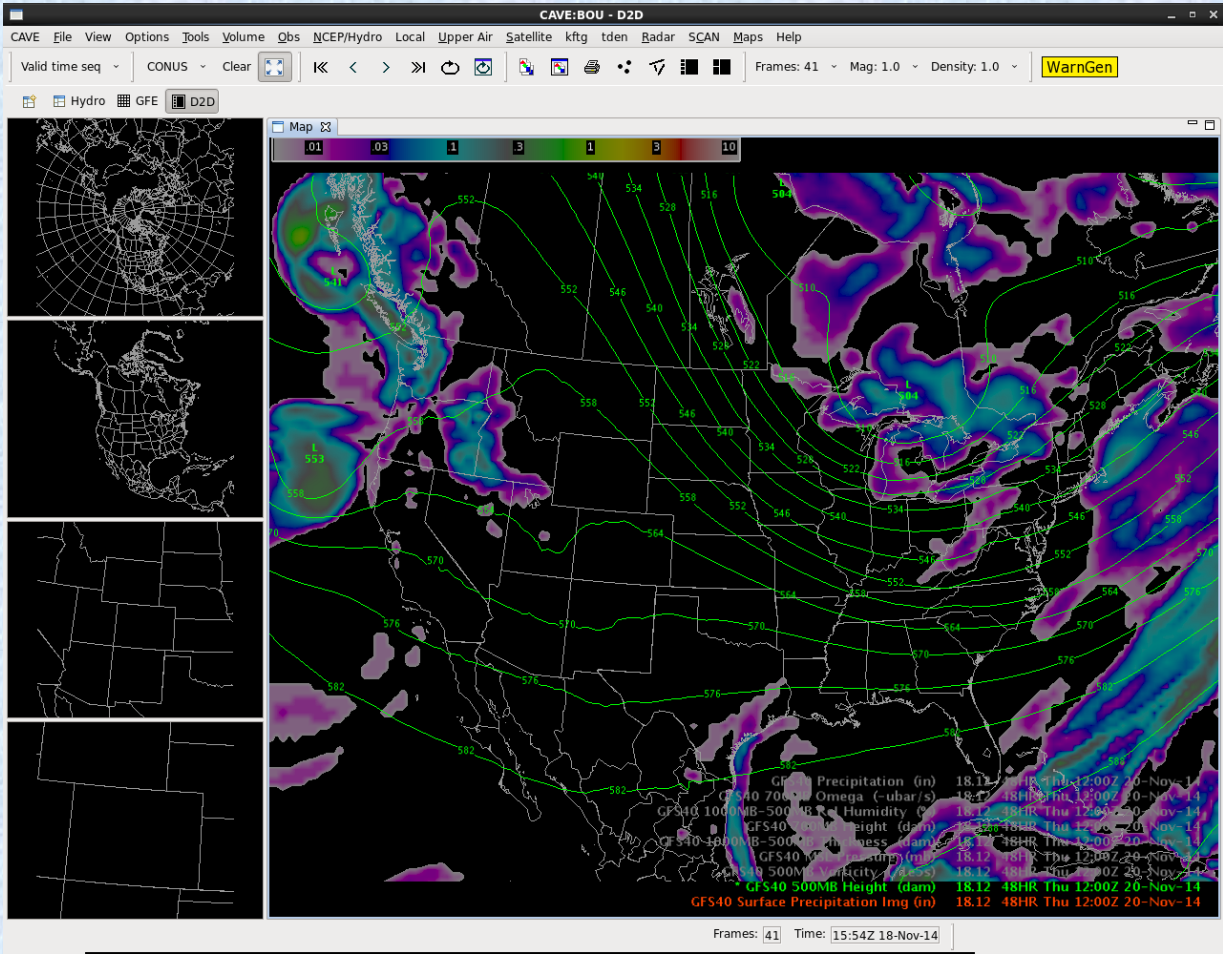
Next Monday



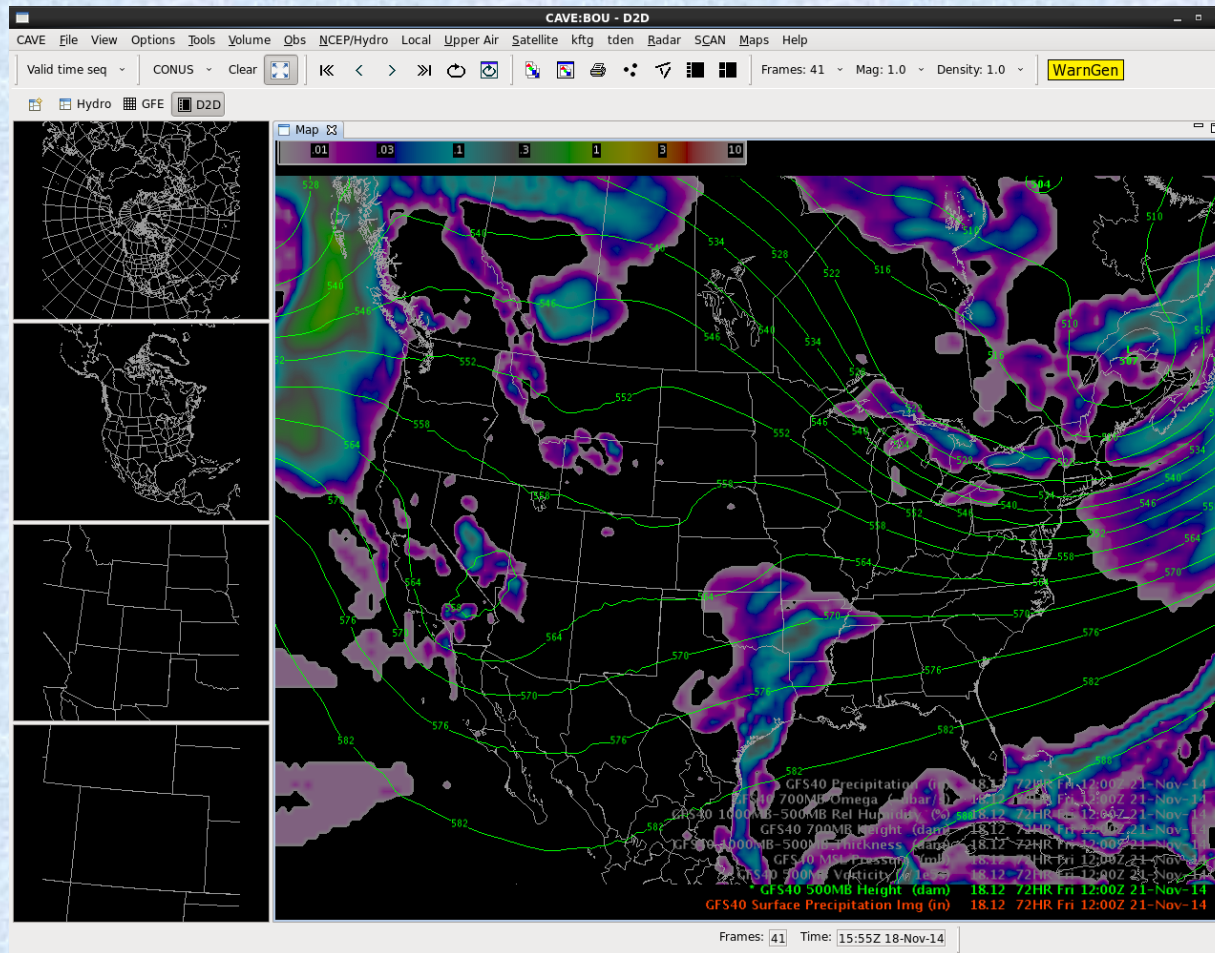
Wednesday



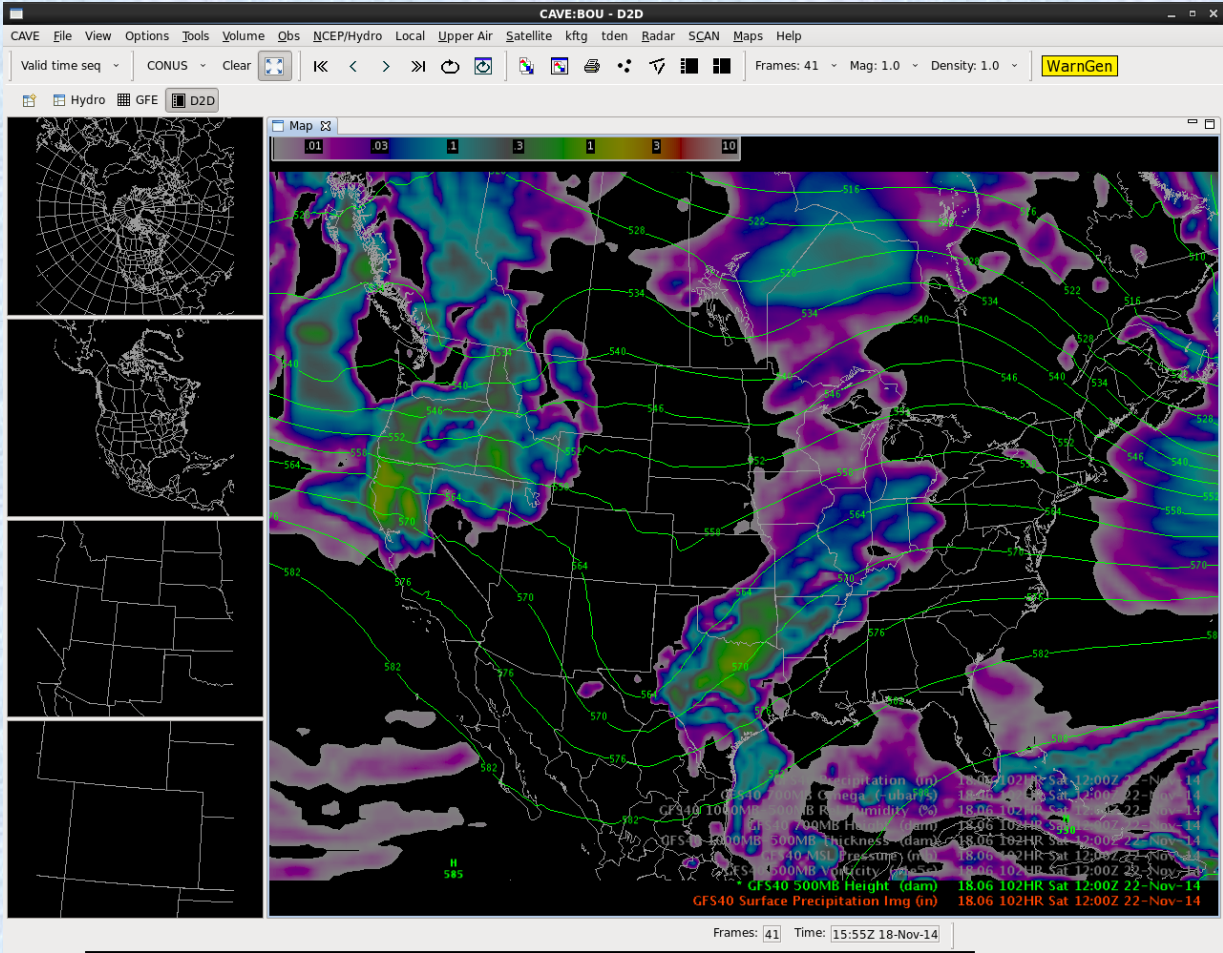
Thursday



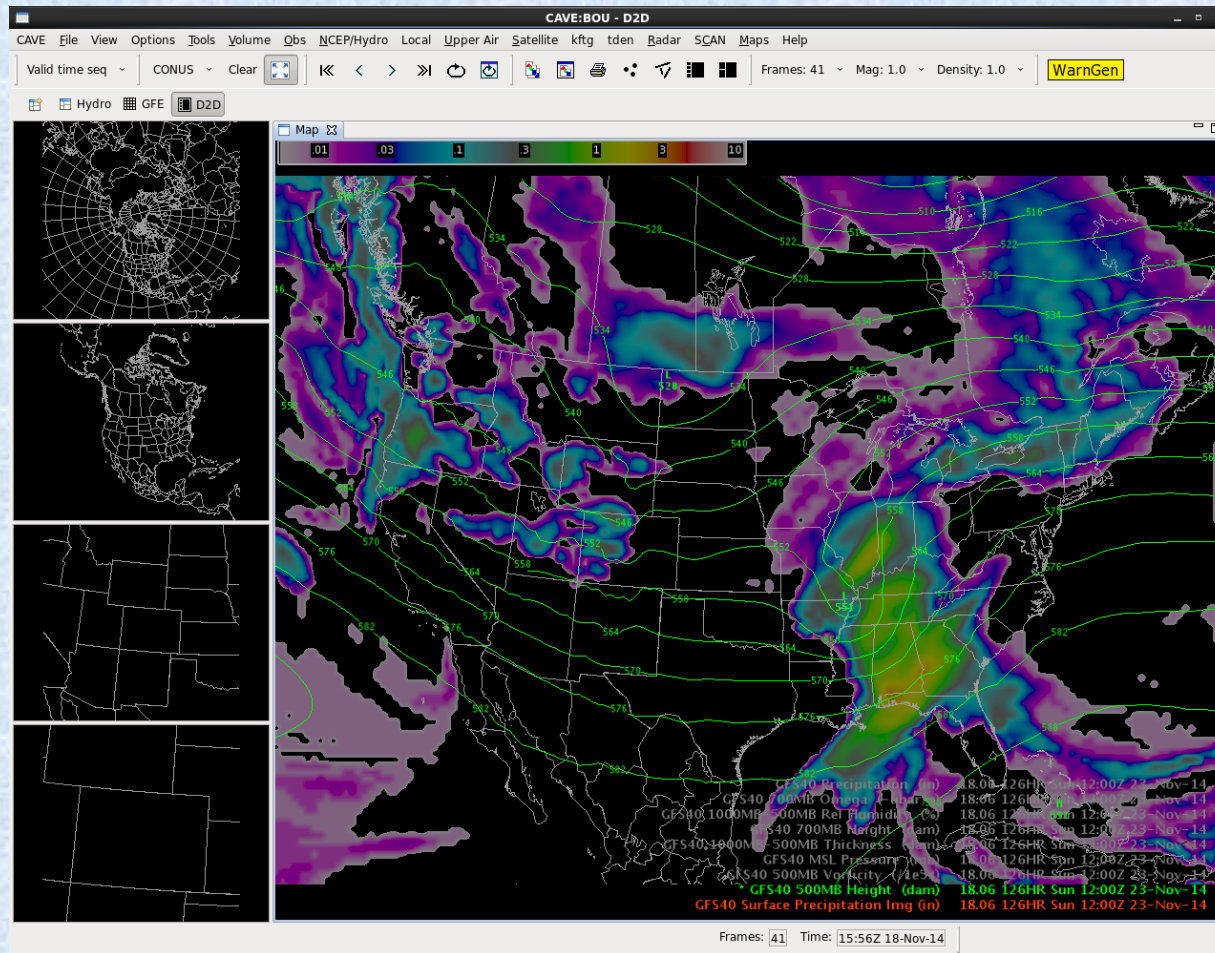
Friday



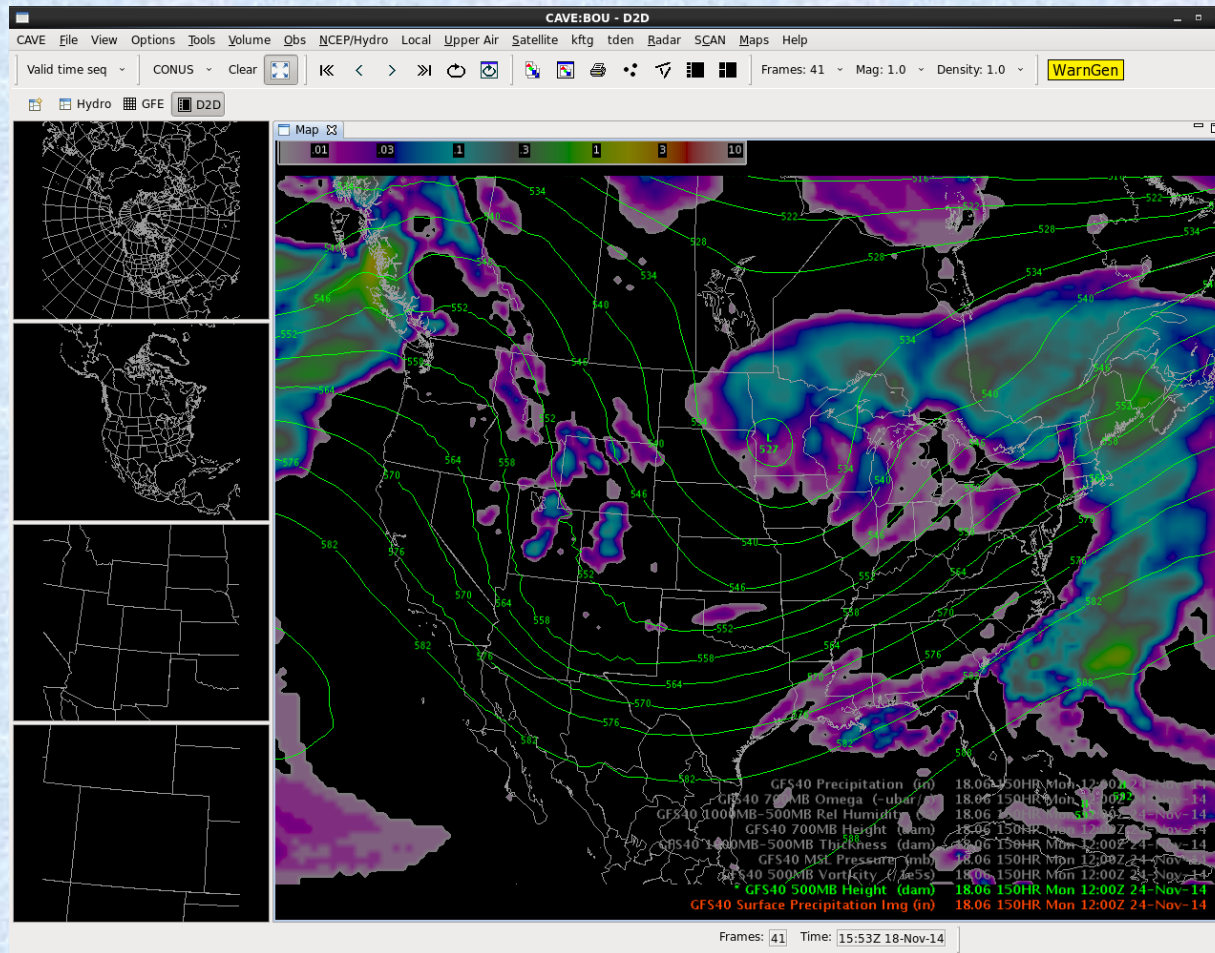
Saturday



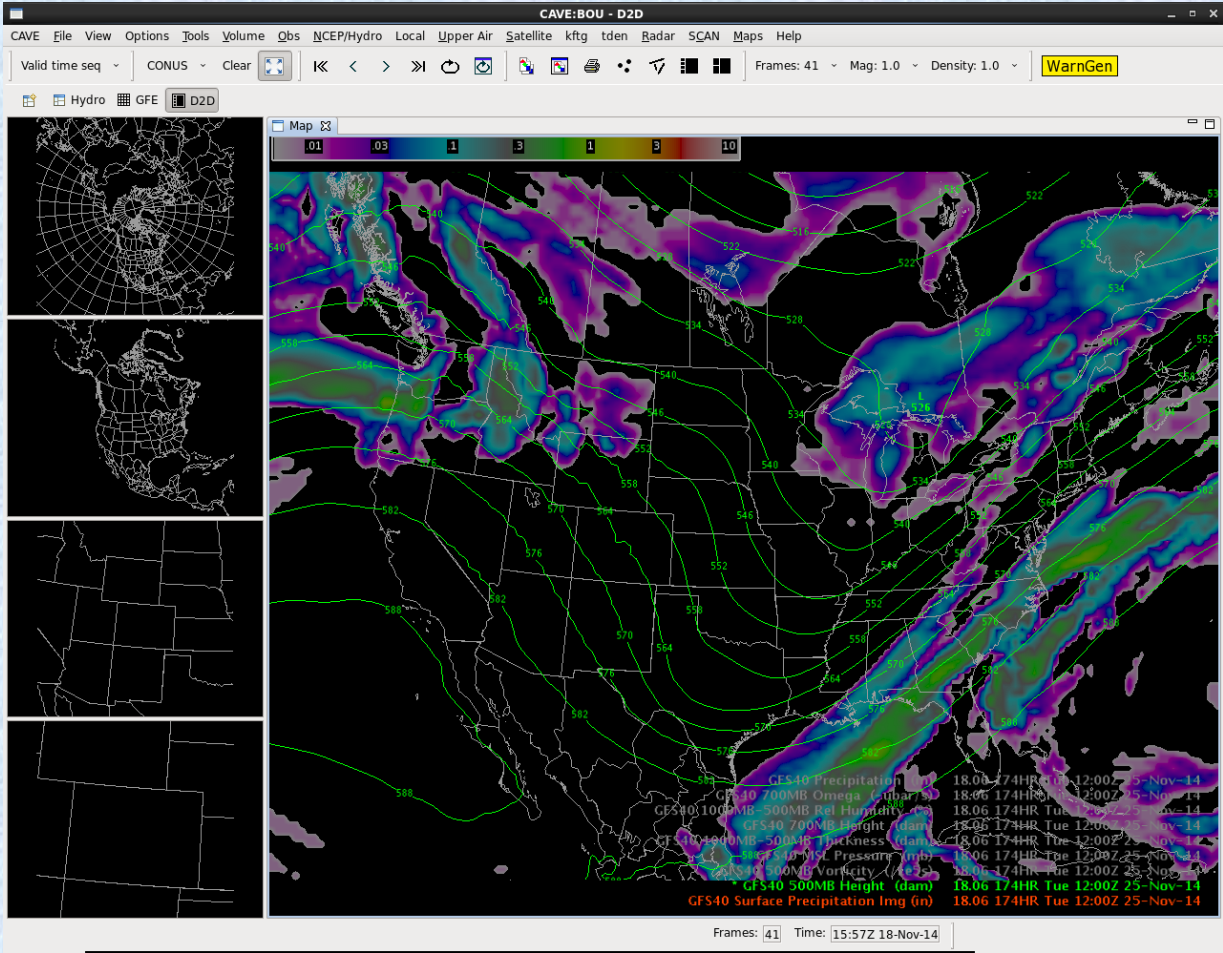
Sunday



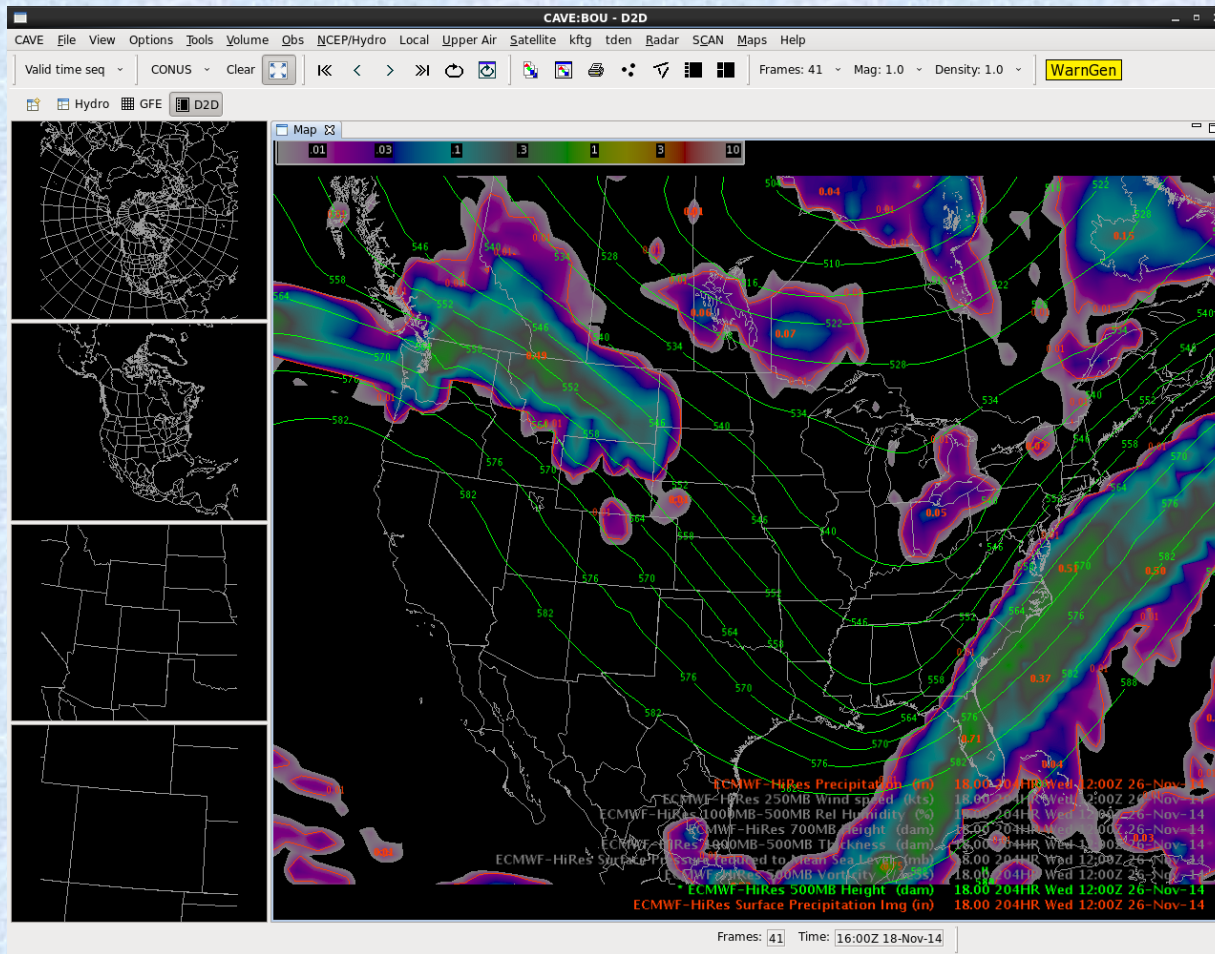
Next Monday



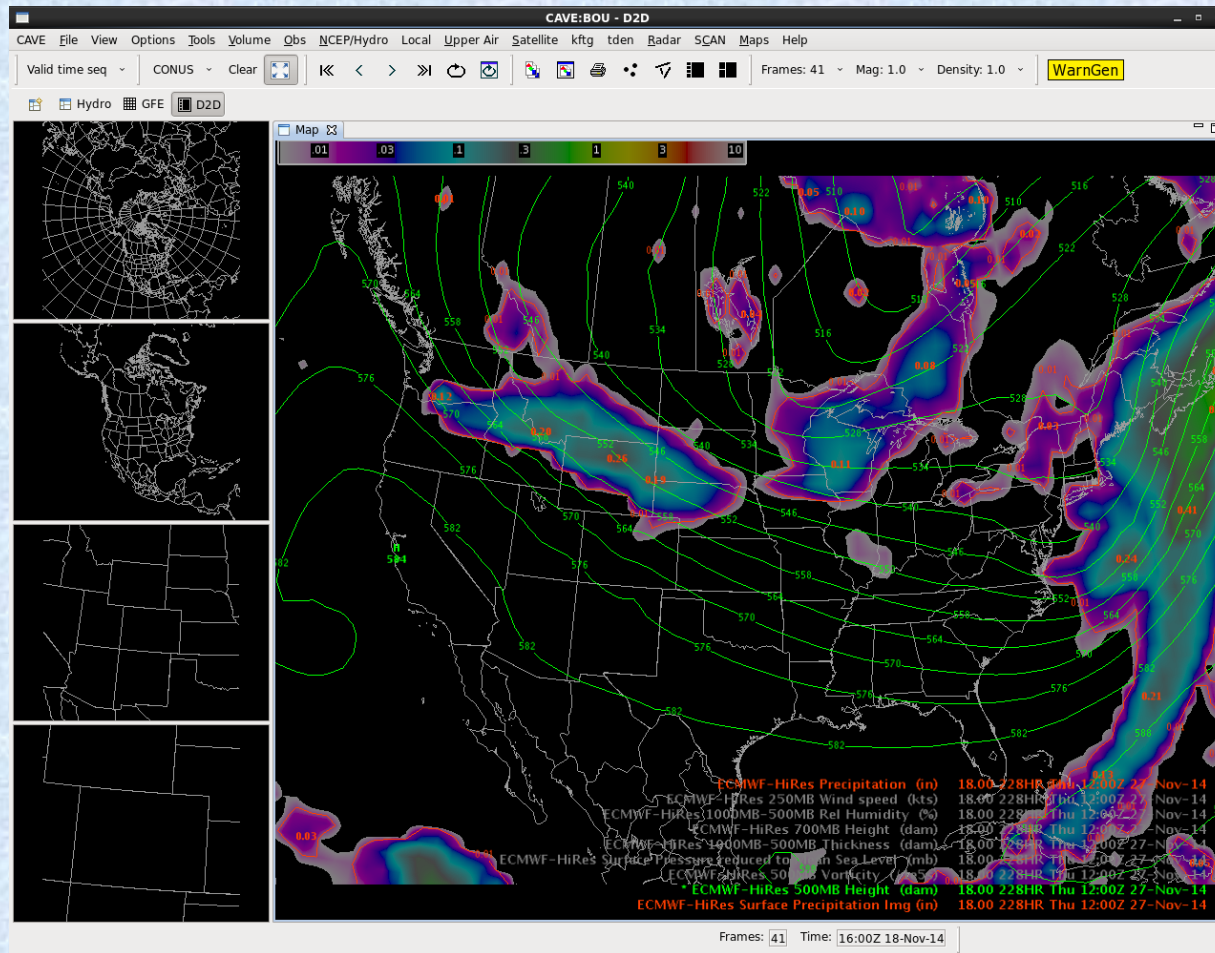
Next Tuesday



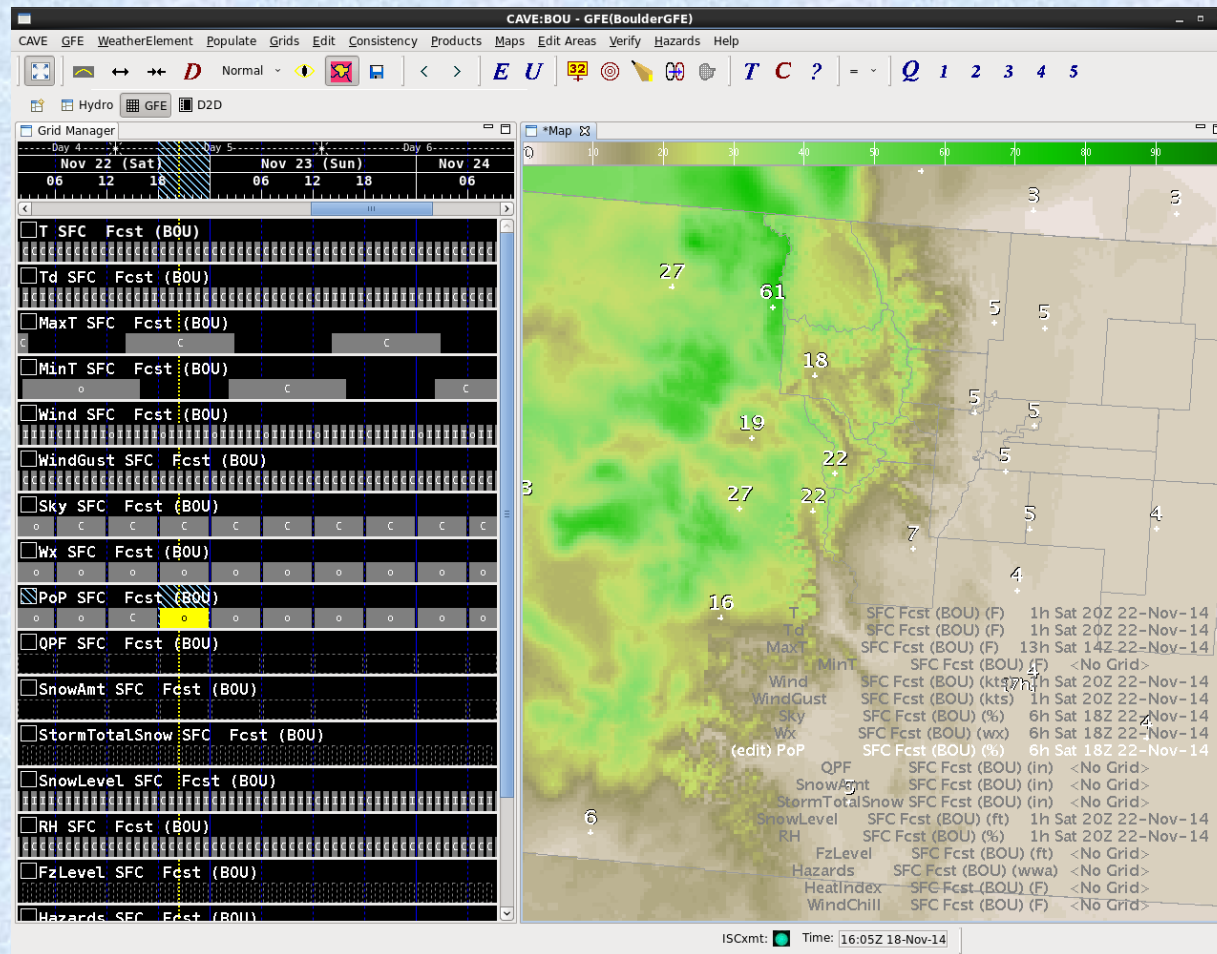
Next Wednesday



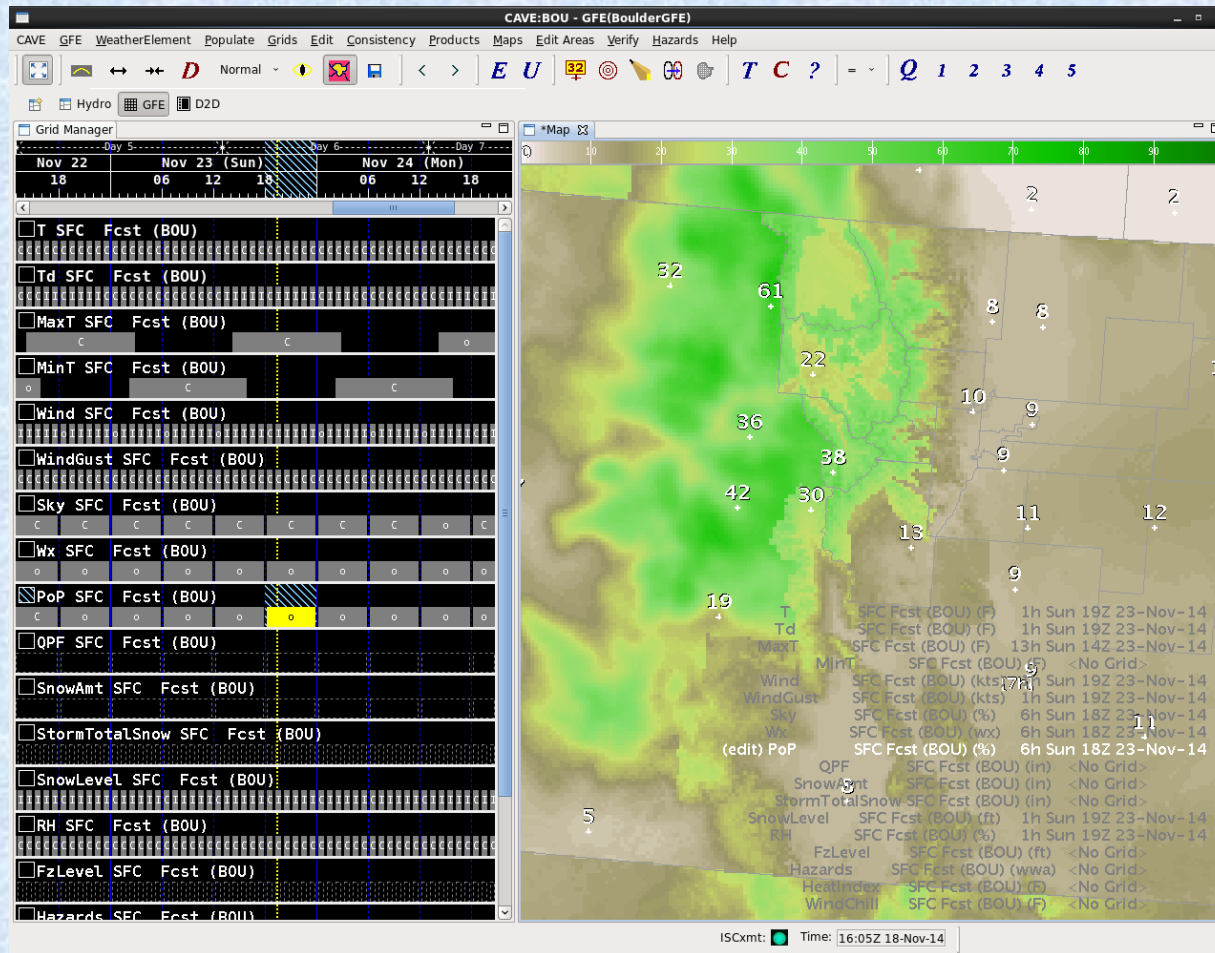
Thanksgiving – snow??



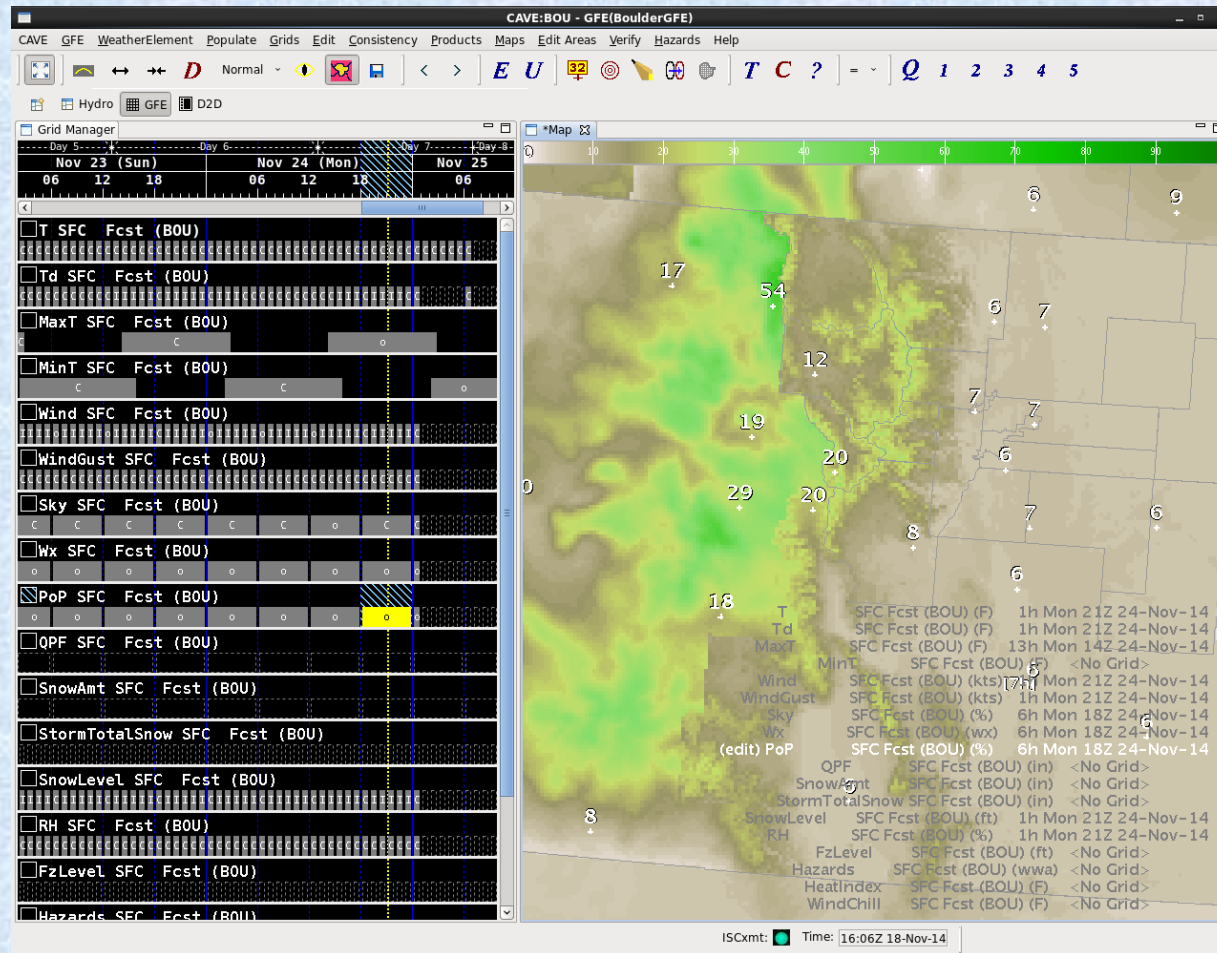
Snow Probabilities Saturday

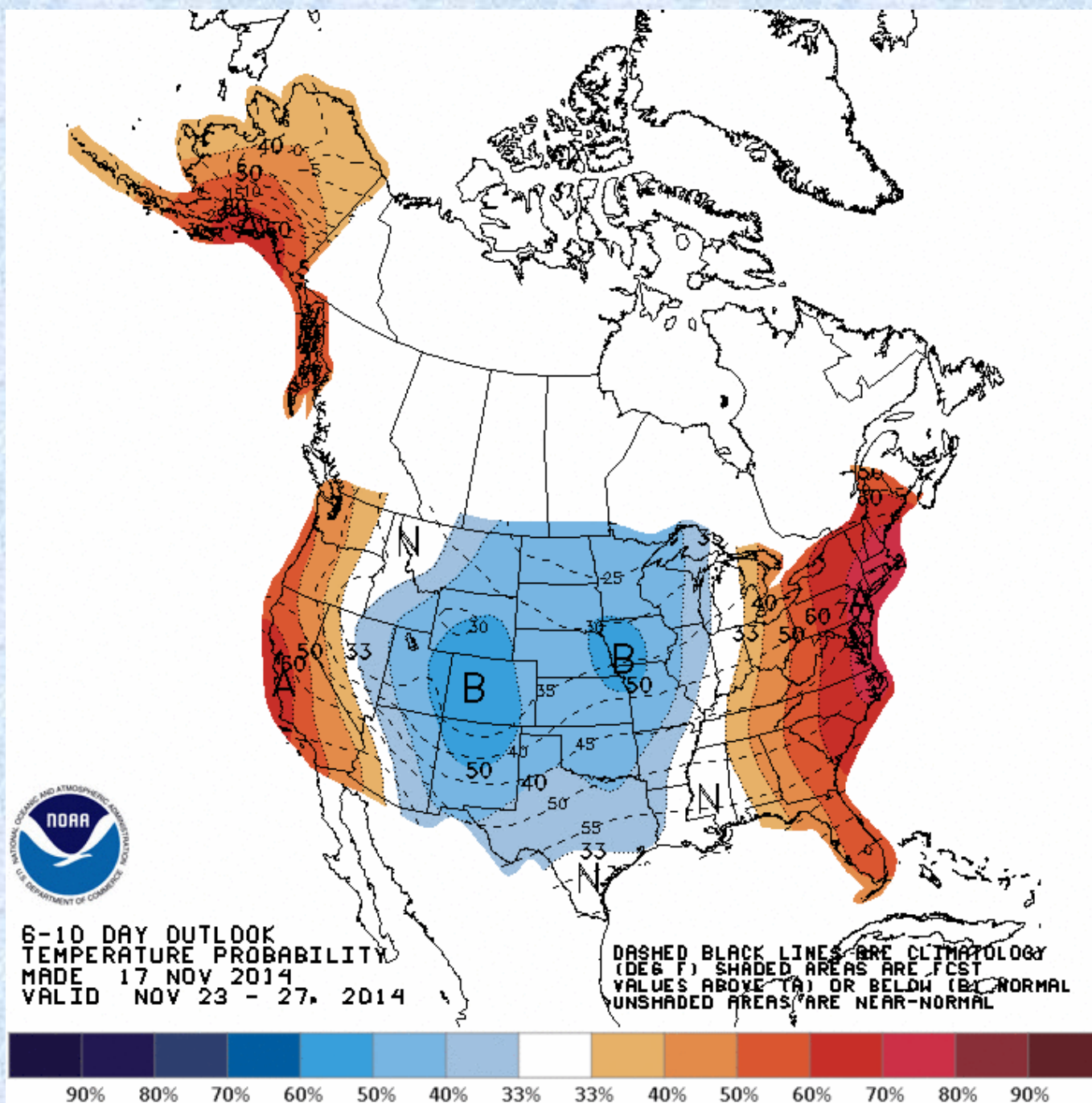


Snow Probabilities Sunday



Snow Probabilities Monday

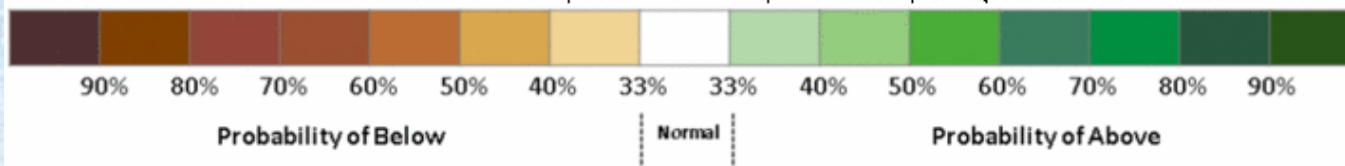


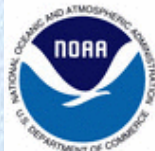




6-10 DAY OUTLOOK
PRECIPITATION PROBABILITY
MADE 17 NOV 2014
VALID NOV 23 - 27, 2014

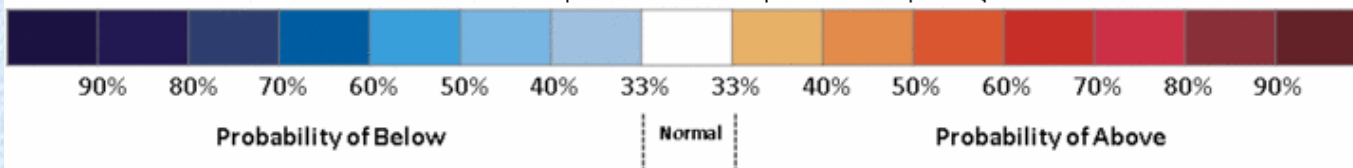
DASHED BLACK LINES ARE CLIMATOLOGY
(TENTH OF INCHES) SHADED AREAS ARE FCS
VALUES ABOVE (A) OR BELOW (B) MEDIAN
UNSHADED AREAS ARE NEAR-MEDIAN





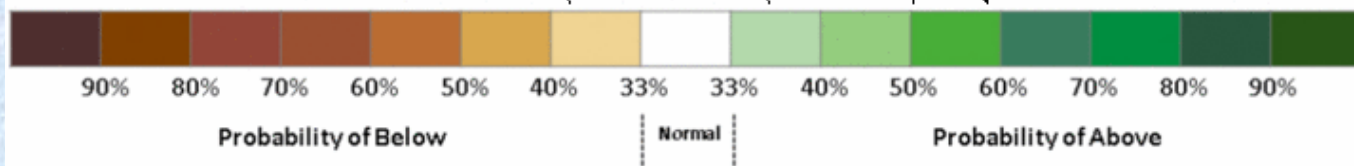
8-14 DAY OUTLOOK
TEMPERATURE PROBABILITY
MADE 17 NOV 2014
VALID NOV 25 - DEC 01, 2014

DASHED BLACK LINES ARE CLIMATOLOGY
(DEG F). SHADED AREAS ARE FCST
VALUES ABOVE (A) OR BELOW (B) NORMAL.
UNSHADED AREAS ARE NEAR-NORMAL





8-14 DAY OUTLOOK
PRECIPITATION PROBABILITY
MADE 17 NOV 2014
VALID NOV 25 - DEC 01, 2014



DASHED BLACK LINES ARE CLIMATOLOGY
(TENTH OF INCHES) SHADED AREAS ARE FCS
VALUES ABOVE (A) OR BELOW (B) MEDIAN
UNSHADED AREAS ARE NEAR-MEDIAN

