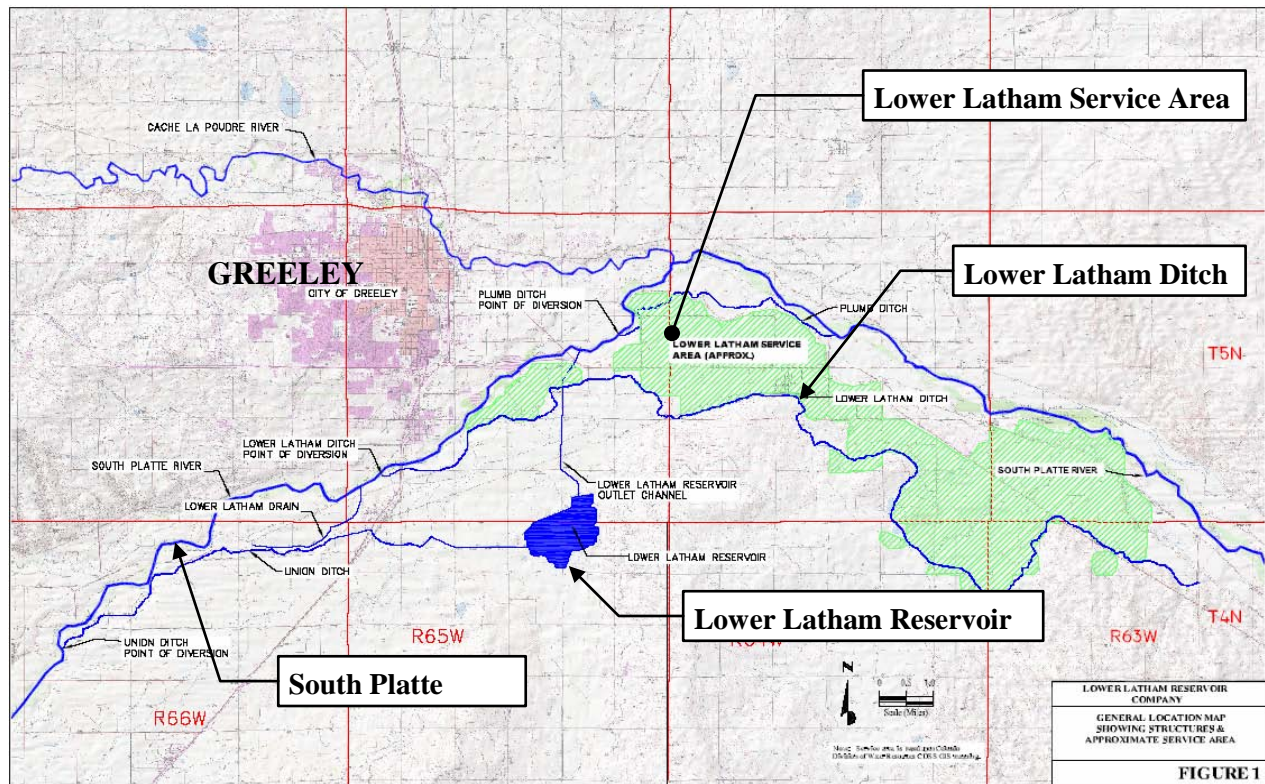


LOWER LATHAM RESERVOIR COMPANY WELL AUGMENTATION PROJECT (Phase III)



Location Map

Project Description

The Lower Latham Reservoir Company acquired five shares of Lower Latham Ditch Company, for the purpose of providing augmentation water for existing shareholder wells. The Project included constructing groundwater recharge facilities and other system improvements to utilize these shares and shares acquired in Phases I & II. The Company provides augmentation water for 84 wells in Weld County by replacing out-of-priority pumping depletions. The Project included the purchase of five shares of the Lower Latham Ditch a portion of the Klein Farm and the Schmidt Farm for the recharge sites. The Company completed the recharge ponds on the sites in 2010.

Project Data

Sponsor: Lower Latham Reservoir Co **County:** Weld

Water Source: South Platte River

Terms of Loan: \$3,811,573, 30 years @ 2.75%

Substantial Completion: June 1, 2014

Engineer: Doug Seely, Greeley, CO

Project Elements: Purchase of five shares of the Lower Latham Ditch, a portion of the Klein Farm, a portion of the Schmidt Farm, and construction of recharge ponds on the sites.