

**Arkansas Basin Roundtable  
January 8, 2014  
Meeting Notes**

**Roundtable Business**

Gary Barber called the meeting to order at 12:00 pm. Members and visitors introduced themselves. Twenty seven (27) members were present. There are 39 active roundtable members at this time – 20 is a quorum.

**Public Comment**

3 documents on side table: Colorado's Water Plan FAQs, Colorado's Water Plan News and Updates, and SWSI Basin Implementation Planning fact sheet. Please take these docs back to your constituents.

Basin Roundtable Feedback Opportunity sheet – please give feedback to IBCC regarding the subject of New Supply. There are concepts that the IBCC is looking at; some of which are controversial. Get comments to Jay or Jeris by February 7<sup>th</sup>.

Mark Shively, from Douglas County Water Resource Authority, showed a 30-second PSA by Gov. Hickenlooper regarding conservation. See [dcwater.org](http://dcwater.org) for this clip and other how-to clips for simple conservation measures.

**Agenda Reviewed**

**December minutes**

December minutes were approved.

**CWCB Report – Alan Hamel**

Alan welcomed Brent Newman, our new CWCB representative. 2013 was challenging. Drought, fire and flood made for a busy year at the IBCC.

The final Criteria and Guidelines for Ag Fallowing/Leasing pilot projects were adopted. This document is available on the CWCB website, at <http://cwcb.state.co.us/water-management/water-projects-programs/documents/fallowlease/fallowingleasingcriteria%2020131119.pdf>.

Phase II of the Helena Headgate project was approved, along with additional funding in order to put our Basin Implementation Plan into play. Additional dollars were approved for flood damage repair projects. 1.8 million was made available for planning and engineering for damaged intakes, ditch systems, and reservoirs damaged by flooding, mostly in Northern Colorado. The Statewide fund is down to ~ \$100,000. New funds should be released within the next month. Eight more emergency loans were awarded in response to flooding. The Two Rivers loan was de-authorized.

Changes in Criteria and Guidelines are being made, including an increase in retainage and a time limit for beginning a project from the time of the Notice to Proceed.

Another area of focus for CWCB, along with the Upper Colorado River commissioner, is Colorado River available supply and management. 11 of the last 14 years have been under average. That 14 year period is the driest in the last 100 years, and there are only 3 periods that were worse in the last 1,000 years. In 2007, interim storage guidelines were developed that will be implemented in 2014. There will

be a reduction in releases from Lake Powell to Lake Mead. All compact states and Mexico will be participating in a conversation regarding the careful management of this precious resource.

The Blue Mesa Storage committee will bring an update to the RT by April or so regarding their work.

### **IBCC Report – Jeris Danielson and Jay Winner**

Upper Colorado River Commissioner John McClow gave a presentation at the IBCC meeting. Jay and Jeris would like to bring that presentation to the RT next month.

March 6<sup>th</sup>, Roundtable Summit.

Jeris introduced an IBCC document that can be found on the side table: Basin Roundtable Feedback Opportunity to the IBCC. The document invites feedback on the subject of New Supply. Comments need to be to Jeris or Jay by February 7<sup>th</sup>, in order for them to get to the next IBCC meeting.

Roundtable members discussed the document briefly, as follows, roughly:

- Regarding page 2 where it talks about “defining a process to resolve issues and refrain from either endorsing or precluding any new supply project,” this was already done by the Flaming Gorge Taskforce. Nine basin roundtables came up with a process by consensus, including the west slope roundtables.
- The next paragraph talks about sequencing of strategies – we’ve also talked about this a lot. Is it a 3-legged stool with New Supply coming later or a 4-legged stool including the possibility of New Supply now?
- This IBCC white paper intimates that there will be no new supply.
- There is a consequence in our basin if there is no new supply, a consequence to Ag.
- What are the needs and demands of agriculture? We need to define Ag water needs, and make sure it has equal footing.

### **Subcommittee Reports and Updates**

#### *Executive Committee*

The EC started going over the Basin Implementation Plan report, and how to organize the work. We have two contracts in place at this time, and we are looking at some places that we believe that there are holes in the report, including Outreach, Non-Consumptive, and Agricultural needs. You see that later in the agenda we’re working on grant funding to address some of those holes. In addition to addressing information holes, we’ll be asking Roundtable members to increase their participation in getting information out and gathering information in from their constituencies.

Public Outreach will use PEPO, but we will need to go beyond the PEPO committee to get the job done. Perry is leaving his PEPO role, and Terry Book is taking over that role. Terry can’t be the person that goes and talks to every stakeholder group in the basin. We need to develop a communication route, so that Terry gets all the information he needs.

We’ve spent a long time at this and we’ve learned a lot, but we’ve mainly focused on issues that someone on the Roundtable felt strongly about. Now we need to broaden our view and consider issues from the view of the entire basin, so that we see the whole picture and we don’t leave out important parts of the basin. For example, we will build on the core of folks on the Value of Ag and Non-Consumptive committees and add to those committees, so that we ensure that the entire basin is represented.

### *Ag Value Subcommittee*

An Executive Summary will be released soon, and Jake Salcone is working on the final report.

### **PRESENTATION - BASIN IMPLEMENTATION PLAN**

Gary re-presented the PowerPoint included in last month's minutes in its entirety, as emailed to RT members and interested parties.

### **PRESENTATION – WATERSHED HEALTH**

#### **Overview**

- ❖ *Watershed Health within the Basin Plan*
- ❖ *Arkansas is an Importing and Exporting basin*
- ❖ *Non-consumptive needs*
- ❖ *Capturing the experience of others*
  - *Fire Suppression*
  - *Post-fire recovery*
  - *Forest health*
  - *Other watershed environmental services*

#### **Basin Plan Outline**

##### **Table of Contents**

##### Executive Summary

Section 1	Basin Goals and Measurable Outcomes
Section 2	Evaluate Consumptive and Nonconsumptive Needs
	2.1 Nonconsumptive Needs
	2.2 Consumptive Needs
Section 3	Evaluate Consumptive & Nonconsumptive Constraints and Opportunities
	3.1 Current Basin Water Operations and Hydrology
	3.2 Water Management and Water Administration (Optional)
	3.3 Hydrologic Modeling (Optional)
	3.4 Shortages Analysis
Section 4	Projects and Methods
	4.1 Education, Participation & Outreach
	4.2 Watershed Health
	4.3 Conservation Projects and Methods
	4.4 New Multi-Purpose, Cooperative, and Regional Projects and Methods
	4.5 M&I Projects and Methods (i.e. projects, conservation, reuse, drought planning)
	4.6 Agricultural Projects & Methods
	4.7 Nonconsumptive Projects and Methods
	4.8 Interbasin Projects and Methods (optional)
Section 5	Implementation Strategies for the Projects and Methods
Section 6	How the plan meets the Roundtables' Goals and Measurable Outcomes

---

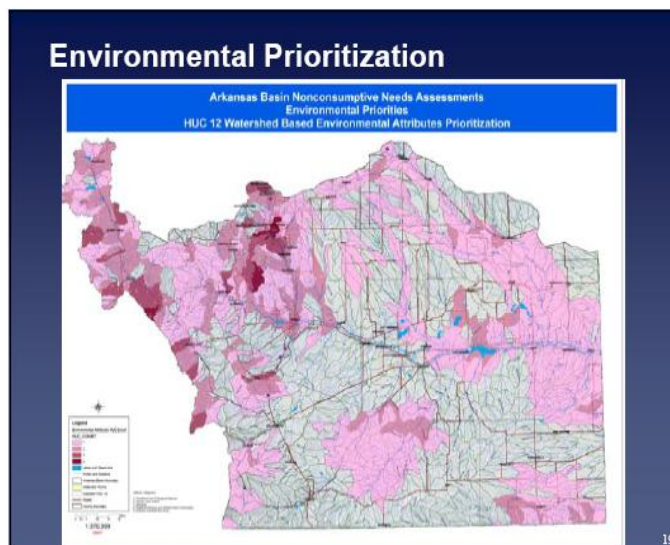
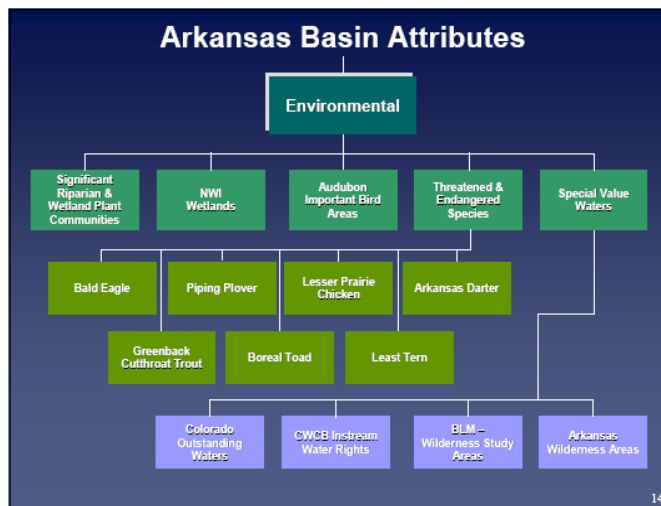
#### **Imports & Exports**

- ❖ Bureau of Reclamation: Frying Pan-Arkansas Project (SECWCD)
- ❖ Municipal and Agricultural Diversions
  - Roaring Fork
  - Eagle
  - Blue River

- ❖ Historic Diversions
  - Twin Lakes
  - Homestake
  - Columbine
- ❖ Watershed Health crosses basin & jurisdictional boundaries

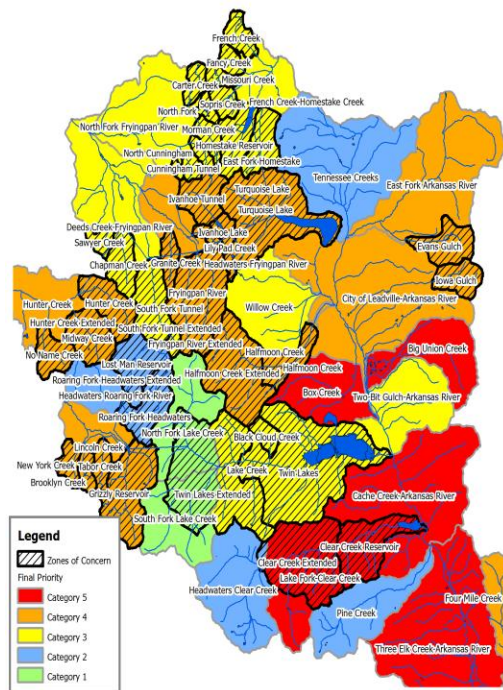
### Non-Consumptive Needs Assessment (2008)

- ❖ Configured on Hydraulic Unit Codes (HUC's) and their attributes
- ❖ Adopted at the April, 2008 Roundtable Meeting
- ❖ Could we use this method to also address Watershed Health?



### Final Priority with Zones of Concern

Watershed Health Plan format but tied to Non-Consumptive Needs (JW Asso.)



Arkansas Headwaters Watershed with 5-mile upstream distance  
(Thank you Colorado Springs Utilities for brainstorming this approach )

### Going Forward

- ❖ Invite the Federal, State and NGO's to participate
- ❖ Deliverables
  - Establish a common technical platform for watershed health plans (HUC's)
  - Generate a reference "HOW TO" library
  - Produce a preliminary Watershed Health Basin Action Plan
- ❖ "This page intentionally NOT left blank"

### The Invitation

- ❖ BYOC & BYOS
  - Bring Your Own Consultants
  - Bring Your Own Staff
- ❖ Ark RT will fund the facilitation
  - # of meeting can be reduced by webinar
  - Integration of basin-to-basin efforts
- ❖ "This page intentionally NOT left blank"
  - Collaboration to generate Plans that are similar across basin boundaries
  - Funding through future WSRA grants (joint?)

TASKS	Lead Facilitator		Associate		Mileage	Materials	Venues (avg)	TOTAL
	Bergman (\$135/hr)		Salmon (\$75/hr)					
	Hours	Cost	Hours	Cost	\$0.55/mi			
Task 0	5	\$ 675	8	\$ 600	\$ -	\$ 50	\$ 350	\$ 1,675
Task 1	10	\$ 1,350	12	\$ 900	\$ 275	\$ 50	\$ 350	\$ 2,925
Task 2	10	\$ 1,350	12	\$ 900	\$ -	\$ 50	\$ 350	\$ 2,650
Task 3	10	\$ 1,350	12	\$ 900	\$ 275	\$ 50	\$ 350	\$ 2,925
Task 4	20	\$ 2,700	24	\$ 1,800	\$ 275	\$ 100	\$ 700	\$ 5,575
Task 5	10	\$ 1,350	12	\$ 900	\$ 275	\$ 50	\$ 350	\$ 2,925
Task 6	14	\$ 1,890	14	\$ 1,050	\$ -	\$ 50	\$ 350	\$ 3,340
TOTAL	79	\$ 10,665	94	\$ 6,110	\$ 1,100	\$ 400	\$ 2,800	\$ 19,975

### **WSRA Grant Application**

Basin Implementation Plan elements

Arkansas Basin Implementation Plan, Section 4.3, Efficiency Projects and Methods

\$10,000 in Basin Funds

Task 1 Gather Stakeholder Input on Existing and Potential Efficiency Projects and Methods

Task 2 Identify Action Items – Conservation Projects and Methods

Task 3 Prioritize Actions – Efficiency Projects and Methods

Task 4 Revise per Roundtable Input  
Reporting and Final Deliverable

This application was approved by consensus, with no minority opinion expressed.

### **DISCUSSION**

Basin Implementation Plan

-Goals and Objectives

Gary invited RT members to share goals and objectives that they did not see expressed in the synopsis.

Comments are collated below:

- Watershed health, water quality & fire mitigation needs to be a priority in every basin in the state.
- Encourage folks to look out for their own local demands.
- Storage of more water, higher.
- How do we better 'farm' the snow? We should catch as much snow as we can.
- SWSI identified Ag as acres possible to be irrigated. Our work has been to come up with an economic value. Let's identify that value and hold that baseline.
- Retention of our water in the basin. Can we say that more definitively, while protecting private property rights?
- Non-consumptive storage.
- Ag needs a definition of gap.
- This is an over-appropriated basin and we can't afford to lose any more water.
- Local control through 1041 process.
- In Otero County, the 1041 process does not stop water sales from occurring. It addresses issues related to the sale of water, but does not stop the sale.
- Not all counties have adopted 1041 processes.
- External values of Ag, such as return flows, environmental habitat.
- Advocate for a sustainable future in agriculture.

**Role of a Roundtable member**

Ideally speaking, every citizen in the basin is represented by a roundtable member. Each roundtable member is responsible for ensuring that their region within the basin is represented. Communicate with the Executive Committee and let them know what you need in order to get your region represented. We need your help with outreach and with sub-committees as we pull together the Basin Implementation Plan.

**Other Business**

Next meeting February 12<sup>th</sup>, Steam Plant, Salida, CO  
Adjourn