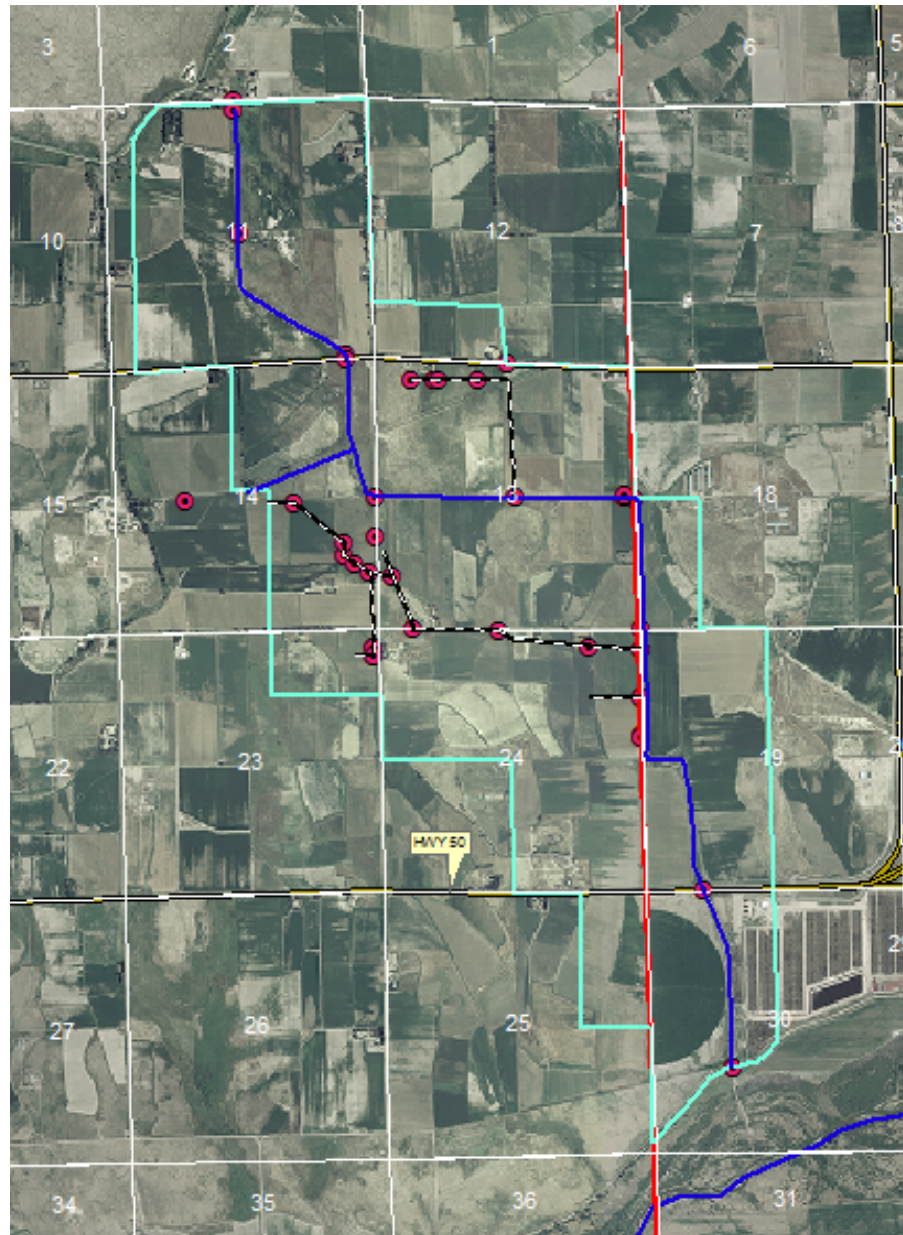


Riverview Drainage District Drainage System Inventory



June 27, 2006

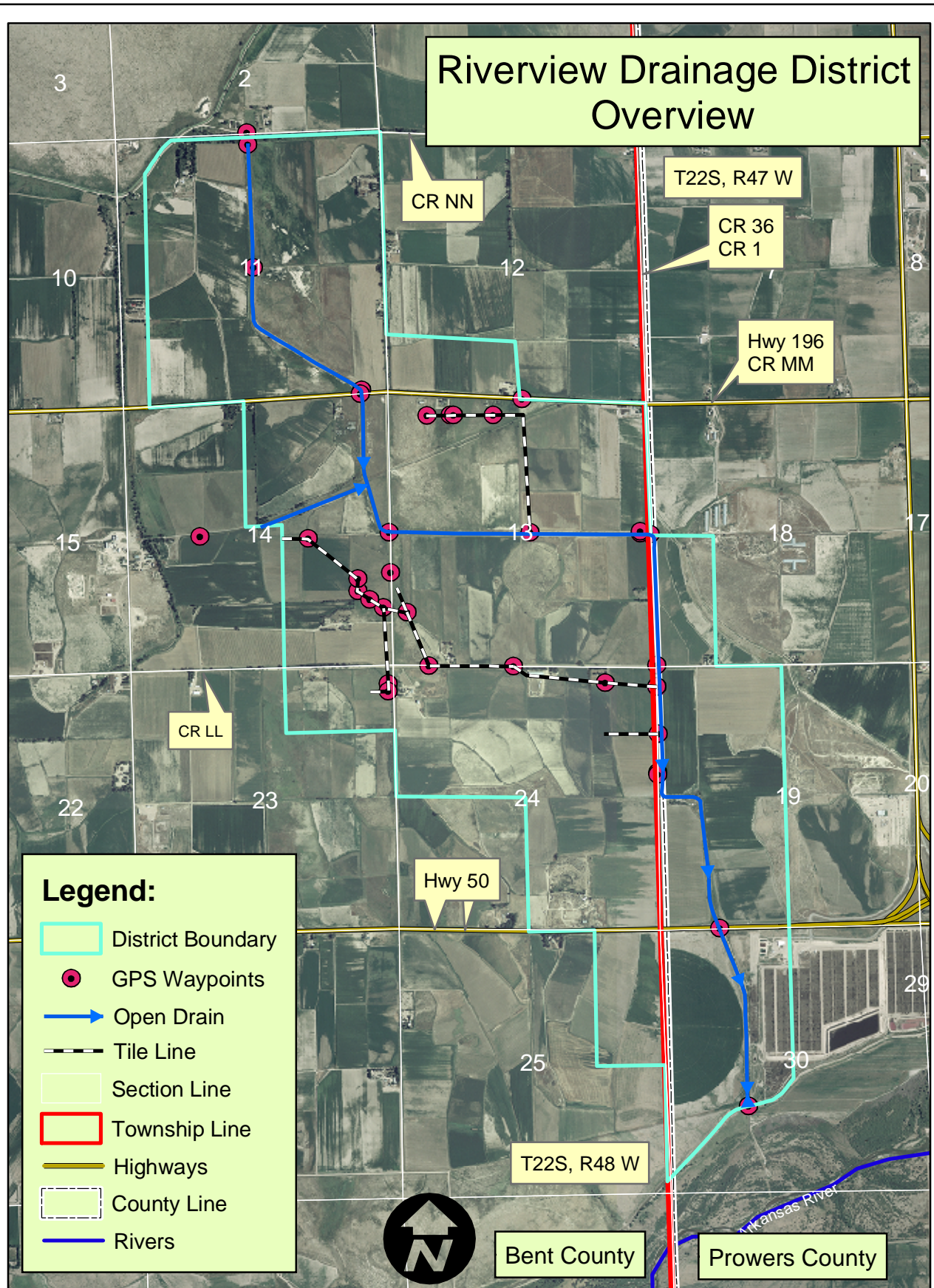
Prepared by: Floyd Downing, Joe and Shirley Guder, Clyde Spitzer,
Walter Epley

The Lower Arkansas Valley Drainage System Rehabilitation Study
Colorado State Univ., Dr. John Wilkins-Wells, Sociology Water Lab
Clark Building B258, Fort Collins, CO 80523 Ph: 970-491-5635

Riverview Drainage District Overview

Legend:

- District Boundary
- GPS Waypoints
- Open Drain
- Tile Line
- Section Line
- Township Line
- Highways
- County Line
- Rivers





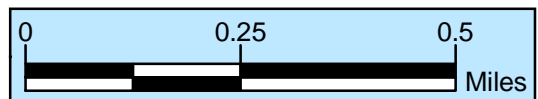
3

Riverview Drainage District Sec. 11 Detail w/ waypoints



Legend:

- District Boundary
- GPS Waypoints
- Open Drain
- Tile Line
- Section Line
- County Line
- Rivers



Riverview Drainage District
SE corner of Sec. 11 Detail
Waypoints 269 and 270



11

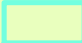



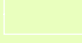
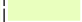

269

270

Hwy 196
CR MM

14

Legend:

-  District Boundary
-  GPS Waypoints
-  Open Drain
-  Tile Line
-  Section Line
-  County Line
-  Rivers

Bent County

T22S, R48 W

