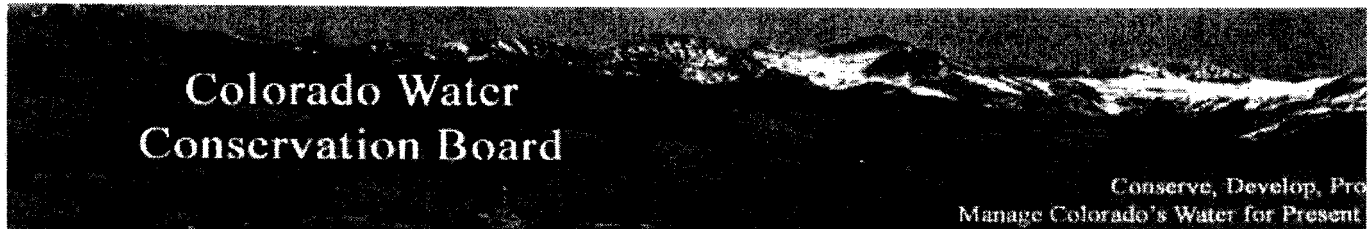


**Viehl, Rob**

---

**From:** rob.viehl@state.co.us  
**Sent:** Thursday, May 21, 2009 1:20 PM  
**To:** Viehl, Rob  
**Subject:** CWCB ISF Public Meeting Notice  
**Attachments:** ATT365524.dat



The Stream and Lake Protection Section of the Colorado Water Conservation Board is meeting with interested parties to discuss recommendations received for potential Division 4 Instream Flow appropriations in 2010 on Alpine Gulch, Big Dominguez Creek, Blue Creek (increase), Cebolla Creek, Cochetopa Creek, East Beaver Creek, Little Dominguez Creek, North Tabeguache Creek, Red Canyon Creek, San Miguel River, Spring Creek, Tabeguache Creek, and Willow Creek.

Two separate public meetings are scheduled on May 27<sup>th</sup> to discuss the proposed recommendations.

9:00 AM to Noon  
Montrose County Administration Building  
BOCC Board Room  
161 S. Townsend Ave  
Montrose, CO 81401

5:30 PM to 7:30 PM  
Lake City School  
614 North Silver St.  
Lake City, CO 81235

The Stream and Lake Protection staff will provide a brief presentation on the ISF program as a background for the discussion. For additional information on these segments, please visit the CWCB's website at:  
<http://cwcb.state.co.us/StreamAndLake/NewAppropriations/ISFAppropriationNotices/2010ProposedAppropriations/2010Appropriations.htm>

Questions about new appropriations may be directed to Jeff Baessler at 303-866-3441 ext 3202 or [Jeffrey.Baessler@state.co.us](mailto:Jeffrey.Baessler@state.co.us)

Please access the CWCB/IBCC Insider on the [CWCB](#) or [IBCC](#) websites to manage your account, including changing your default password, editing your contact data, updating your registration to the various public subscription lists, and deleting your account.

If you believe that you received this email in error, or the content is not correct, please reply to this email with specifics.

## FOR SALE

**FOR SALE** - Honda CRV, 107,300 miles; good condition; automatic; real-time 4WD LX; bike rack; A/C; tow package; CD player; newer tires. 970-944-1312.

**FOR SALE** - Queen size mattress, \$100; 27" hiips color TV, \$150; 2-drawer desk, \$50. Call 944-0288 after June 16 or email [lhwillis1@verizon.net](mailto:lhwillis1@verizon.net).

**FOR SALE** - 22 CITY LOTS IN BLOCK 4 North edge of Lake City. \$198,500. Challenging flood-plain and utility issues. Call 970-944-2714. [pete@centurytel.net](mailto:pete@centurytel.net)

**FOR SALE** - TWO ATVS,

one 2001 Arctic Cat 300 4x4, \$2,150; one 2001 Arctic Cat 500 4x4 \$2,695. Both always garaged. Call 816-228-2811 or email [wysconstinc@yahoo.com](mailto:wysconstinc@yahoo.com)

**FOR SALE** - Doolittle 22' enclosed car trailer, black. \$3995. Call 816-228-2811 or email [wysconstinc@yahoo.com](mailto:wysconstinc@yahoo.com)

**FOR SALE** - 1999 JEEP WRANGLER SPORT with auto transmission & hard top., tan color. 85K, always serviced at Lake City Texaco. Call 816-228-2811 or email [wysconstinc@yahoo.com](mailto:wysconstinc@yahoo.com)

## FOR RENT

**CABIN RENTAL** - 2 bedroom, full bath, by day or week. Mid-June through August. Reasonable. 940-692-3281. 970-944-2609

**LOOKING TO RENT** - 2 local teachers w/ 2 kids & dog looking for rental house. 2-3 bedroom. 944-0158.

**FOR RENT** - COMMERCIAL SPACE AVAILABLE for summer or for the year. Call 944-

4008.

**HOMES FOR RENT** - 2 & 3 bedroom cabins at the Texan. Until June 15 or longer. Utilities prorated. Rent \$750 - \$875. Call 944-2246.

**VACATION RENTAL!** 3 bedroom, 2 bath, pets welcome, on Alpine Loop, ATVs welcome. \$236 per night. Call 970-641-1167. or [bbwyman@lakecity.net](mailto:bbwyman@lakecity.net). Lots of availability.

## PUBLIC MEETING NOTICE

The Stream and Lake Protection Section of the Colorado Water Conservation Board is meeting with interested parties to discuss recommendations received for potential Division 4 Instream Flow appropriations in 2010 on Alpine Gulch, Big Dominguez Creek, Blue Creek (increase), Cabolla Creek, Cochetopa Creek, East Beaver Creek, Little Dominguez Creek, North Tabeguache Creek, Red Canyon Creek, San Miguel River, Spring Creek, Tabeguache Creek, and Willow Creek. The Stream and Lake Protection staff will provide a brief presentation on the ISF program as a background for the discussion. For additional information on these segments, please visit the CWCB's website at: <http://cwcb.state.co.us/StreamAndLake/NewAppropriations/ISFAppropriationNotices/2010ProposedAppropriations/2010Appropriations.htm>

The meeting will take place at 5:30 pm. on May 27th, 2009, and will be held in Lake City School, 614 North Silver St., in Lake City, Colorado. Questions about new appropriations may be directed to Jeff Baessler at 303-866-3441 ext 3202 or [Jeffrey.Baessler@state.co.us](mailto:Jeffrey.Baessler@state.co.us)

Published by Silver World Publishing Co.  
(The Lake City Silver World)  
Lake City, Colorado  
Publication dates: May 22, 2009

## HELP WANTED

**WANTED** - Person to do yard maintenance at County Courthouse grounds and Veteran's Park. Contact Charlie at the Building Dept. 944-2319

**HOUSEKEEPING STAFF** needed for summer. Mostly weekends, random week days. \$17 per hour. Please call (970) 944-8104.

**DIRT** is looking to hire a second adult crew leader for the Youth Corps. Four weeks, 15 hours per week, \$14 per hour. Please submit resume and/or call 944-DIRT.

**POSITION OPENING: GROUP LEADER AT WEE CARE IN LAKE CITY.** 25-35 hours per week, salary range \$10-\$12 per hour depending on experience. Responsibilities include: Assisting director with planning and implementation of child development program for children ages 12 months to 12 years. Assisting director with administrative duties as assigned. Willing to train. Paid training available. Minimum Qualifications: 24 months of verified child care experience plus six college credit hours in Early Childhood Education.

**POSITION OPENING: STAFF AIDE AT WEE CARE IN LAKE CITY**

20-30 hours per week, salary range \$8-\$10 per hour depending on experience. Responsibilities include: Assisting director and other staff with planning and implementation of child development program for children ages 12 months to 12 years. Assisting director and other staff with administrative duties as assigned. Minimum Qualifications: 18 years of age. A pleasant and approachable manner with children, parents, and staff. A high degree of motivation, initiative, and kindness.

Positions are open immediately and are year-round. Wee Care in Lake City is an equal opportunity employer. Please send letter of interest, resume, and 3 references to: Ruth Ann Hake, Director, Wee Care in Lake City, P.O. Box 56 Lake City, CO 81235 970.944.0106weecare4kids@gmail.com

**HELP WANTED** - jeep washer & general help, 15 to 20 hrs per week. Available now. Housing available. Castle Lakes Campground. 944-2622.

## LOOK HERE

**2009 SUMMER YOUTH PROGRAM.** June 8-12 & June 22-26. 9 am - 3 pm • Lake City School. For kids ages 6 - 12. Build A Generation is hosting two

Department will get you a truck full of fireman and a hose training in your parking area. Benefits firefighters and you. Call 944-2333. Ask for Michelle

## LINNY'S STAY & PLAY

Learning & doing vacations for small groups. Family reunions too...



Visit: [www.linnysvacations.com](http://www.linnysvacations.com)  
or call (970) 944-7408

**JOHN ROBERTS**  
MOTOR WORKS COMPANY

We are your  
**'ONE STOP, LOCAL SHOP'**  
for ALL your Automotive Needs!

Call our Service or Collision Center  
TODAY for an Appointment.

Why go ANYWHERE ELSE!



**The Montrose Daily Press**  
**Montrose, Colorado 81402**

**AFFIDAVIT OF PUBLICATION**

STATE OF COLORADO                     )  
COUNTY OF MONTROSE                ) SS.

I, Elisha Curtis, do solemnly swear that the MONTROSE DAILY PRESS is a daily newspaper printed, in whole or in part, and published in the City of Montrose, County of Montrose, State of Colorado, and which has general circulation therein; that said newspaper has been continuously and uninterruptedly published for a period of more than six months next prior to the first publication of the annexed legal notice of advertisement, that said newspaper has been admitted to the United State mails as second-class matter under the provisions of the Act of March 3, 1879, or any amendments thereof, and that said newspaper is a daily newspaper duly qualified for publishing legal notices within the meaning of the laws of the State of Colorado; that copies of each number of said newspaper, in which said notice was published, were transmitted by mail or carrier to each of the subscribers of said newspaper, according to the accustomed mode of business in this office.

That the annexed legal notice was published in the regular and entire editions of said newspaper once each week on the same day of each week for the period of Three consecutive insertions; and that the first publication of said notice was in the issue of said newspaper dated May 22, 2009 and that the last publication of said notice was in the issue of said newspaper dated May 24, 2009.

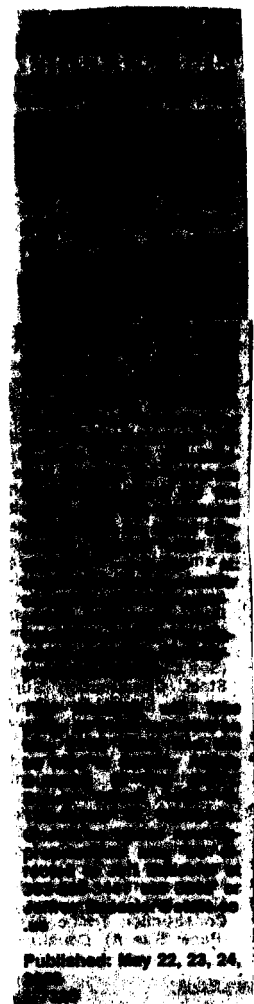
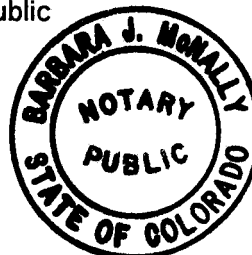
In witness whereof I have hereunto set my hand this  
24th day of May 2009.

Elisha Curtis  
Other

Subscribed and sworn to before me this  
24th day of May, 2009.

My Commission Expires April 26, 2013.

Barbara J. McNally Notary Public



## **Viehl, Rob**

---

**From:** rob.viehl@state.co.us  
**Sent:** Tuesday, March 17, 2009 4:08 PM  
**To:** Viehl, Rob  
**Subject:** Proposed 2010 Instream Flow Appropriations  
**Attachments:** ATT30405.dat



### **Colorado Water Conservation Board**

Conserve, Develop, Protect  
Manage Colorado's Water for Present and Future

Pursuant to ISF Rule 5c of the Rules Concerning the Colorado Instream Flow and Natural Lake Level Program, this notice identifies the streams to be considered for instream flow appropriations in 2010. At the January 2010 meeting of the Colorado Water Conservation Board (CWCB), staff may request that the Board form its intent to appropriate instream flow water rights for the streams listed on the attached Instream Flow Appropriation List. The attached list contains a description of the Instream Flow (ISF) Recommendations including stream name, watershed, county, upper terminus, lower terminus, length, and USGS quad sheet name(s).

Copies of the Instream Flow Recommendations and Appendices of data submitted into the Official CWCB Record are available for review by the public during regular business hours (8:00 a.m. - 5:00 p.m.) at the Colorado Water Conservation Board's Office, located at 1313 Sherman Street, Room 723, Denver, Colorado, 80203. In addition to the CWCB office, copies of the Instream Flow and Natural Lake Level Recommendations are available on the [CWCB website](#).

In addition to the above Instream Flow Recommendations and Appendices, staff may rely on any additional data, exhibits, testimony, or other information submitted by any party as part of the Official CWCB Record to support its Instream Flow Recommendations.

It should also be noted that pursuant to the ISF Rules:

(a) The Board may change flow amounts of contested ISF appropriations based on information received during the public notice and comment period.

(b) Staff will maintain, pursuant to Rule 5e.(3), an ISF Subscription Mailing List for each water division composed of the names of all persons who have sent notice to the Board Office that they wish to be included on such list for a particular water division. Any person desiring to be on the ISF Subscription Mailing List(s) must send notice to the Board Office.

(c) Any meetings held between Staff and members of the public will be open to the public. Staff may provide Proper Notice prior to any such meetings and may provide notice to persons on the ISF Subscription Mailing List(s).

(d) Any Notice to Contest must be received at the Board office no later than March 31, 2010, or the first business day thereafter. All Notices of Party status and Contested Hearing Participant status must be received at the Board office no later than April 30, 2010 or the first business day thereafter.

(e) Staff will announce its Final Staff ISF Recommendation concerning contested appropriations at the September 2010 Board meeting and will send notice of the Final Staff Recommendation to all persons on the Contested Hearing Mailing List.

(f) The Board may take final action on any uncontested ISF appropriations at the May 2010 Board meeting.

Should you wish to comment on the proposed Instream Flow Recommendations, you may do so by writing Jeff Baessler of the Board's staff at the address given above or by sending your comments by email to [jeffrey.baessler@state.co.us](mailto:jeffrey.baessler@state.co.us), [owen.williams@state.co.us](mailto:owen.williams@state.co.us), or [rob.viehl@state.co.us](mailto:rob.viehl@state.co.us). It should be noted that while your appearance at any meeting is welcome, such an appearance is not necessary for your concerns to be recognized. Staff will take your comments into account and, if you so request, will present them to the Board in your absence. If you are not currently on the Board's Instream Flow Subscription Mailing List and you would like to be, please contact the Board's Office at the address given above.

1	Coal Creek	St. Vrain	Boulder	6.1	Boulder County Open Space Boundary	Louisville Wastewater Treatment outfall	Louisville, Lafayette
1	Coal Creek	St. Vrain	Boulder	1.7	Louisville Wastewater Treatment outfall	pumping station #2	Louisville, Lafayette
1	Black Hollow Creek	Cache la Poudre	Larimer	4.5	headwaters	confl Poudre River	Kiniklinik
2	Baldwin Creek	Arkansas Headwaters	Chaffee	4.6	headwaters	confl Chalk Cr	St Elmo
2	Gibson Creek	Arkansas Headwaters	Custer	2.5	headwaters	confl Verde Creek	Beckwith Mt, Electric Pk
2	Middle Creek	Upper Arkansas	Custer/Pueblo	4.7	headwaters	confl Ophir Creek	Deer Pk, St Charles Pk
2	Middle Creek	Upper Arkansas	Custer/Pueblo	6	confl Ophir Creek	Beulah Water Works	Deer Pk, St Charles Pk
2	West Beaver Creek	Upper Arkansas	Freemont	7.5	confl Douglas Gulch	confl East Beaver Creek	Big Bull Mtn, Phantom Canyon
2	Beaver Creek	Upper Arkansas	Freemont	8.9	confl East Beaver Creek	confl Unnamed Tributary	Big Bull Mtn, Phantom Canyon
2	East Beaver Creek	Upper Arkansas	Freemont	8.8	confl Gould Creek	confl Beaver Creek	Mt Big Chief, Big Bull Mtn, Phantom Canyon
2	Baker Creek	Huerfano	Huerfano	1.8	headwaters	USFS Boundary	Trinchera Pk, Cucharas Pass
2	Bonnett Creek	Huerfano	Huerfano	3	headwaters	USFS Boundary	McParty Park, Cuchara
2	Chaparral Creek	Huerfano	Huerfano	2.9	headwaters	USFS Boundary	Cucharas Pass
2	Dodgeton Creek	Huerfano	Huerfano	2.8	headwaters	USFS Boundary	McParty Park, Cuchara
3	Mill Creek	Saguache	Saguache	0.7	USFS Boundary	hdgt Harence Ditch	Laughlin Gulch
4	Big Dominguez Creek		Delta/Mesa		reaches pending Federal legislation	reaches pending Federal legislation	
4	Little Dominguez Creek		Delta/Mesa		reaches pending Federal legislation	reaches pending Federal legislation	
4	Blue Creek (increase)	Upper Gunnison	Gunnison	3.5	confl Little Blue Creek	confl Morrow Point Reservoir	Curecanti Needle
4	Willow Creek	Upper Gunnison	Gunnison	3.6	confl Sugar Creek	confl Blue Mesa Reservoir	Big Mesa
4	Alpine Gulch	Upper Gunnison	Hinsdale	5.7	headwaters	confl Henson Creek	Redcloud Peak, Lake City

4	Spring Creek	Upper Gunnison	Hinsdale	3.3	hdgt Creede Trail Ditch	confl Cebolla Creek	Mineral Mtn.
4	Cebolla Creek	Upper Gunnison	Hinsdale/Gunnison	10.1	confl Brush Creek	confl Spring Creek	Cannibal Plateau, Mineral Mtn.
4	Cebolla Creek	Upper Gunnison	Hinsdale/Gunnison	10.8	confl Spring Creek	USGS gage	Mineral Mtn., Rudolph Hill
4	North Fork Tabeguache Creek	San Miguel	Montrose	9	headwaters	confl Tabeguache Creek	Starvation Point, Wind Point
4	Red Canyon Creek	San Miguel	Montrose	6	headwaters	confl Horsefly Creek	Antone Spring, Sanborn Park
4	San Miguel River	San Miguel	Montrose	16.5	confl Calamity Draw	confl Dolores River	Uravan, Red Canyon, Davis Mesa
4	Tabeguache Creek	San Miguel	Montrose	11	unnamed trib	Forest Service Boundary	Ute, Starvation Point, Big Bucktail Cr, Nucla
4	Tabeguache Creek	San Miguel	Montrose	5.4	confl Fortyseven Creek	hdgt Templeton Ditch	Nucla
4	Tabeguache Creek	San Miguel	Montrose	9.7	hdgt Templeton Ditch	confl San Miguel River	Nucla, Uravan
4	Cochetopa Creek	Tomichi	Saguache	9	confl Nutras Creek	confl Pauline Creek	Elk Park, Cold Spring Park
4	Cochetopa Creek (increase)	Tomichi	Saguache	10	confl Alkali Creek	hdgt South Krueger Ditch	Sawtooth Mtn., Signal Peak
4	East Beaver Creek	Upper Gunnison	Saguache	6.3	headwaters	confl South Beaver Creek	Sawtooth Mtn., Spring Hill Creek
5	Colorado River	Colorado Headwaters	Eagle	40	Eagle/Grand Co. Line	confl Eagle River	Dotsero, Sugarloaf Mtn., Burns South, Burns North, Blue Hill, McCoy, State Bridge
5	Colorado River	Colorado Headwaters	Eagle / Grand	23.7	confl Blue River	confl Piney River	Kremmling, Radium, McCoy, State Bridge
5	Colorado River	Colorado Headwaters	Eagle	45.8	confl Piney River	confl Eagle River	State Bridge, Wolcott
5	Eagle River (increase)	Eagle	Eagle	3.8	confl Cross Creek	confl Gore Creek	Minturn
6	Indian Creek	North Platte Headwaters	Jackson	7.7	headwaters	hdgt West Arapahoe Feeder Ditch 2	Spicer Peak, Whiteley Peak
6	North Fork North Platte River	North Platte Headwaters	Jackson	7.5	headwaters	headgate Little Nellie Ditch	Boettcher Lake, Davis Peak, Pearl
6	South Fork Big Creek	Upper North Platte	Jackson	1.9	confl Wheeler Creek	Colorado-Wyoming stateline	Pearl
6	Wheeler Creek	Upper North Platte	Jackson	4.8	headwaters	confl South Fork Big Creek	Independence Mtn., Pearl
6	Big Beaver Creek (increase)	Upper White	Rio Blanco	3.9	confl Allen Creek	confl East Beaver Creek	Fawn Cr., Sawmill Mtn.
6	Moeller Creek	Upper White	Rio Blanco	3.5	headwaters	confl Fawn Creek	Fawn Creek
6	Piceance Creek	Piceance-Yellow	Rio Blanco	7.7	confl with Dry Fork	confl White River	Barcus Creek SE, White River City
6	Yellow Creek	Piceance-Yellow	Rio Blanco	11.8	Springs in NWNE S12, T1N R98W, 6PM	confl White R	Barcus Cr., Barcus Cr SE, Rough Gulch,
6	Grizzly Creek	Little Snake	Routt	2.9	confl Unnamed tributary	USFS Boundary	Bears Ears Peak
6	Morrison Creek	Upper Yampa	Routt	5	confl Muddy Creek	confl Silver Creek	Green Ridge
6	Morrison Creek	Upper Yampa	Routt	4.5	confl Silver Creek	confl Yampa River	Green Ridge, Blacktail Mtn
6	Morrison Creek	Upper Yampa	Routt	4.5	hdgt Dequine Ditch	confl Yampa River	Green Ridge,

					Alt Pt 1		Blacktail Mtn
6	South Fork Slater Creek	Little Snake	Moffat/ Routt	3.8	headwaters	confl WP South Fork Slater Creek	Buck Point
6	South Fork Slater Creek	Little Snake	Routt	1.9	confl WP South Fork Slater Creek	confl Slater Creek	Buck Point
6	West Prong South Fork Slater Creek	Little Snake	Moffat / Routt	4.6	headwaters	Decker Ditch	Buck Point
6	West Prong South Fork Slater Creek	Little Snake	Routt	1	hdgt Decker Ditch	confl South Fork Slater Creek	Buck Point
7	Animas River	Animas River	San Juan	2.6	confl Minnie Gulch	confl Cunningham Creek	Howardsville
7	Animas River	Animas River	San Juan	2	confl Cunningham Creek	confl Arrastra Creek	Howardsville, Ironton

Please access the CWCB/IBCC Insider on the [CWCB](#) or [IBCC](#) websites to manage your account, including changing your default password, editing your contact data, updating your registration to the various public subscription lists, and deleting your account.

If you believe that you received this email in error, or the content is not correct, please reply to this email with specifics.