



# Colorado Water Availability Task Force

John F. Henz, C.C.M

Dewberry – Denver CO

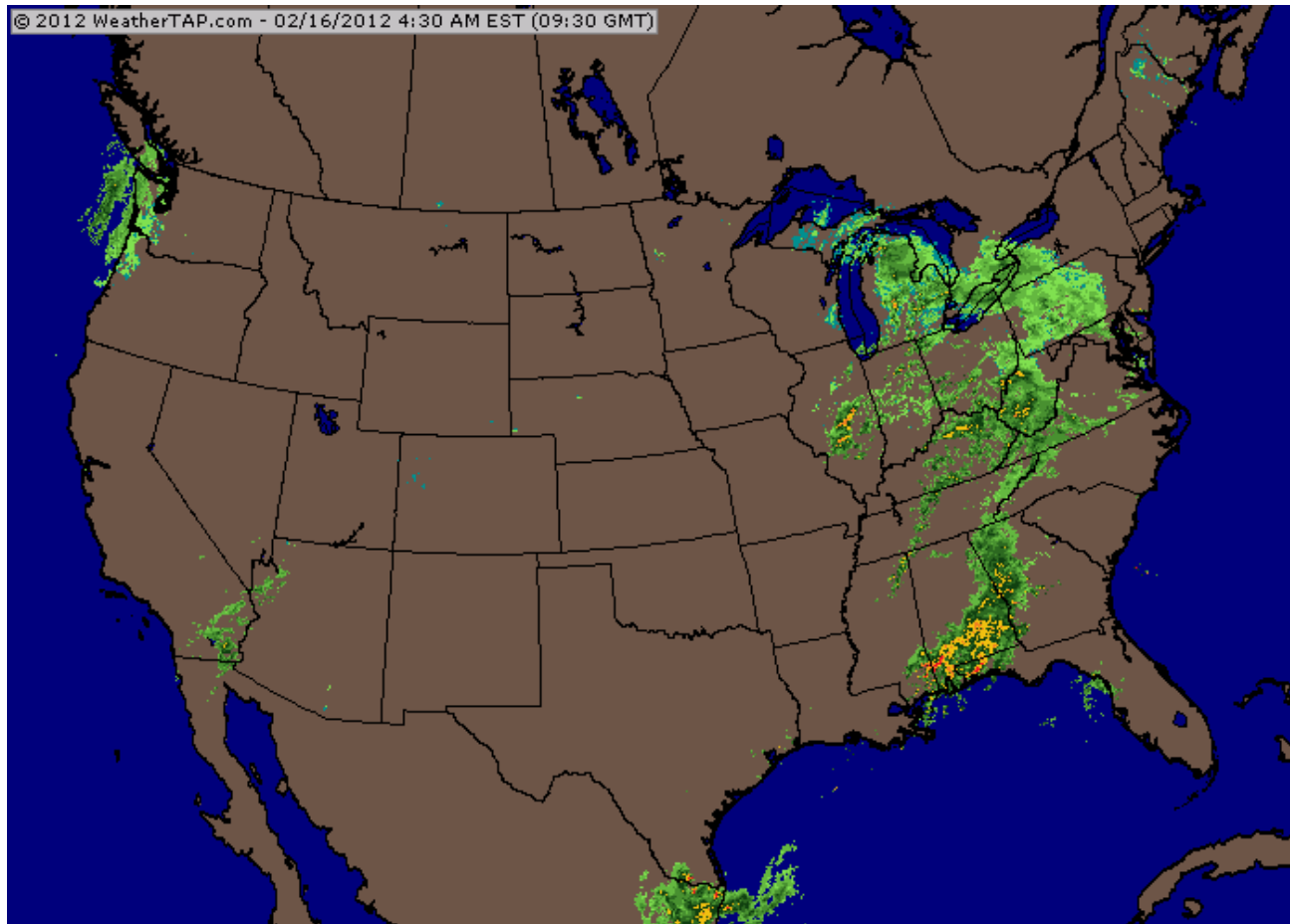
930AM-1100AM  
Thursday, February 16, 2012

# John Henz



- Owned Henz Meteorological Services
- Worked for HDR Engineering 2001-2010
- Joined Dewberry Engineering 2010 – present
- Member of Flood Task Force 1989 – and WATF 2001 – 2009; 2011

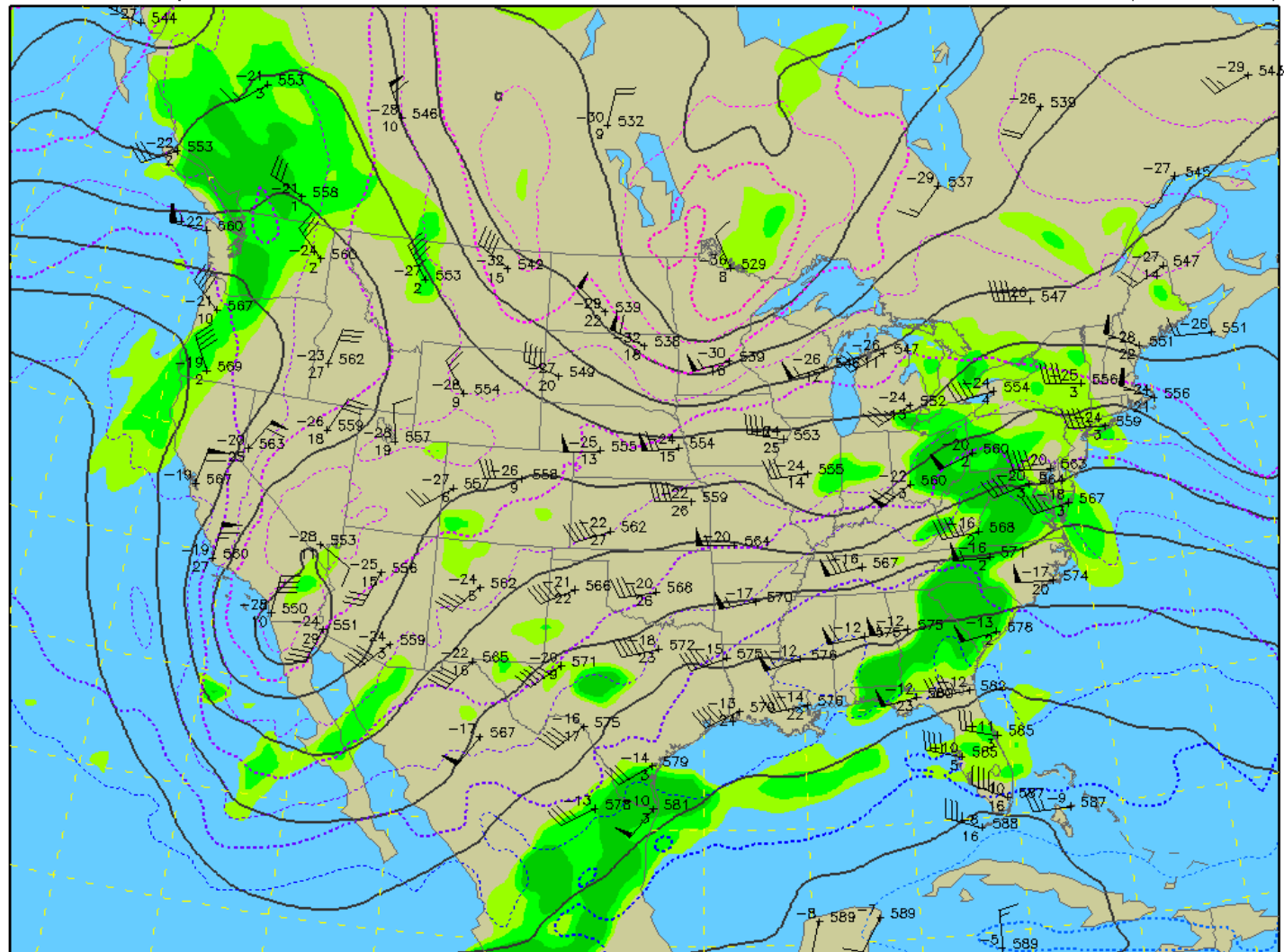
# Current national radar - today



## 500 mb Heights (dm) / Temperature (°C) / Humidity (%)

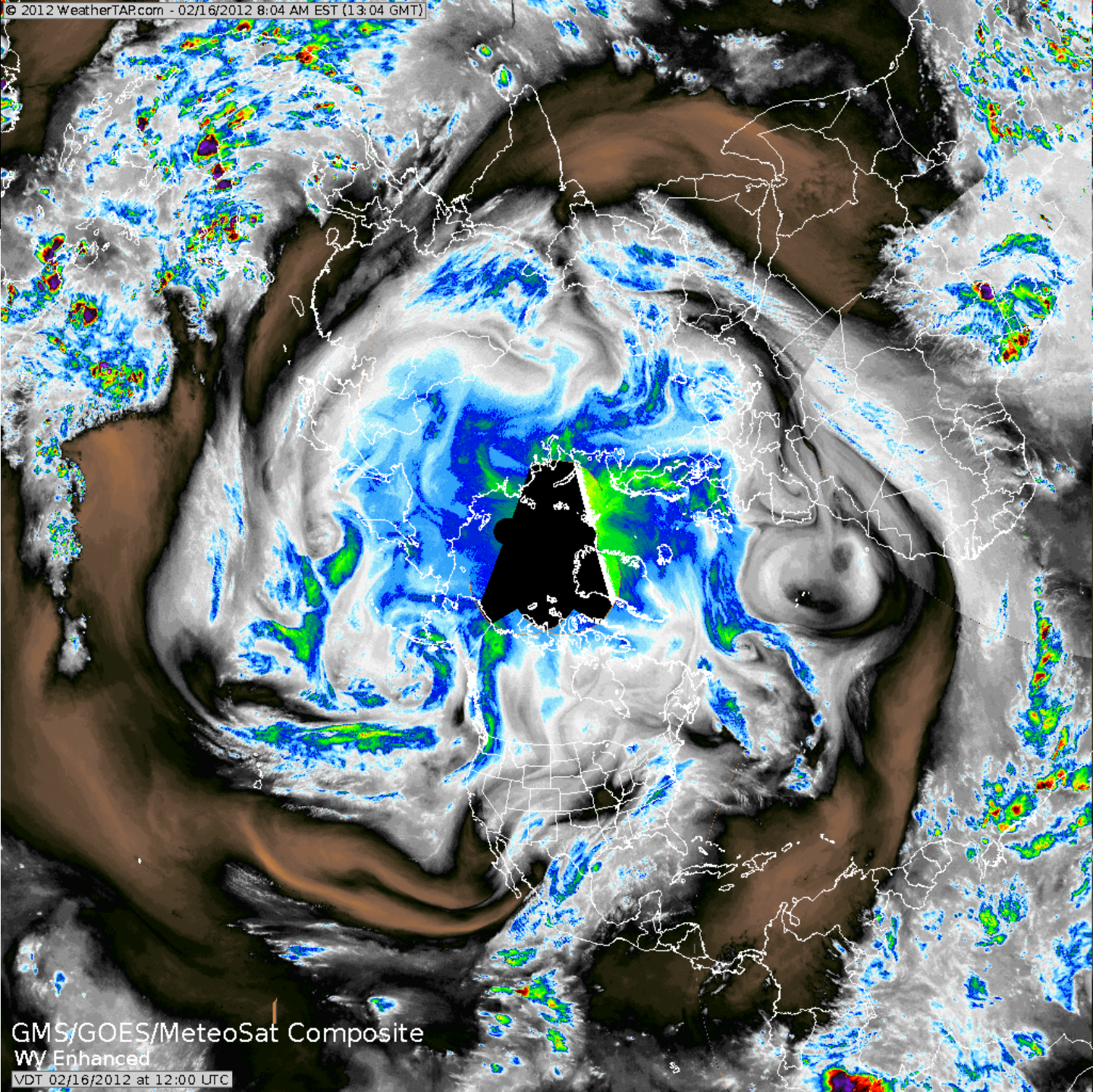
0-hour analysis valid 1200 UTC Thu 16 Feb 2012

RUC (12z 16 Feb)



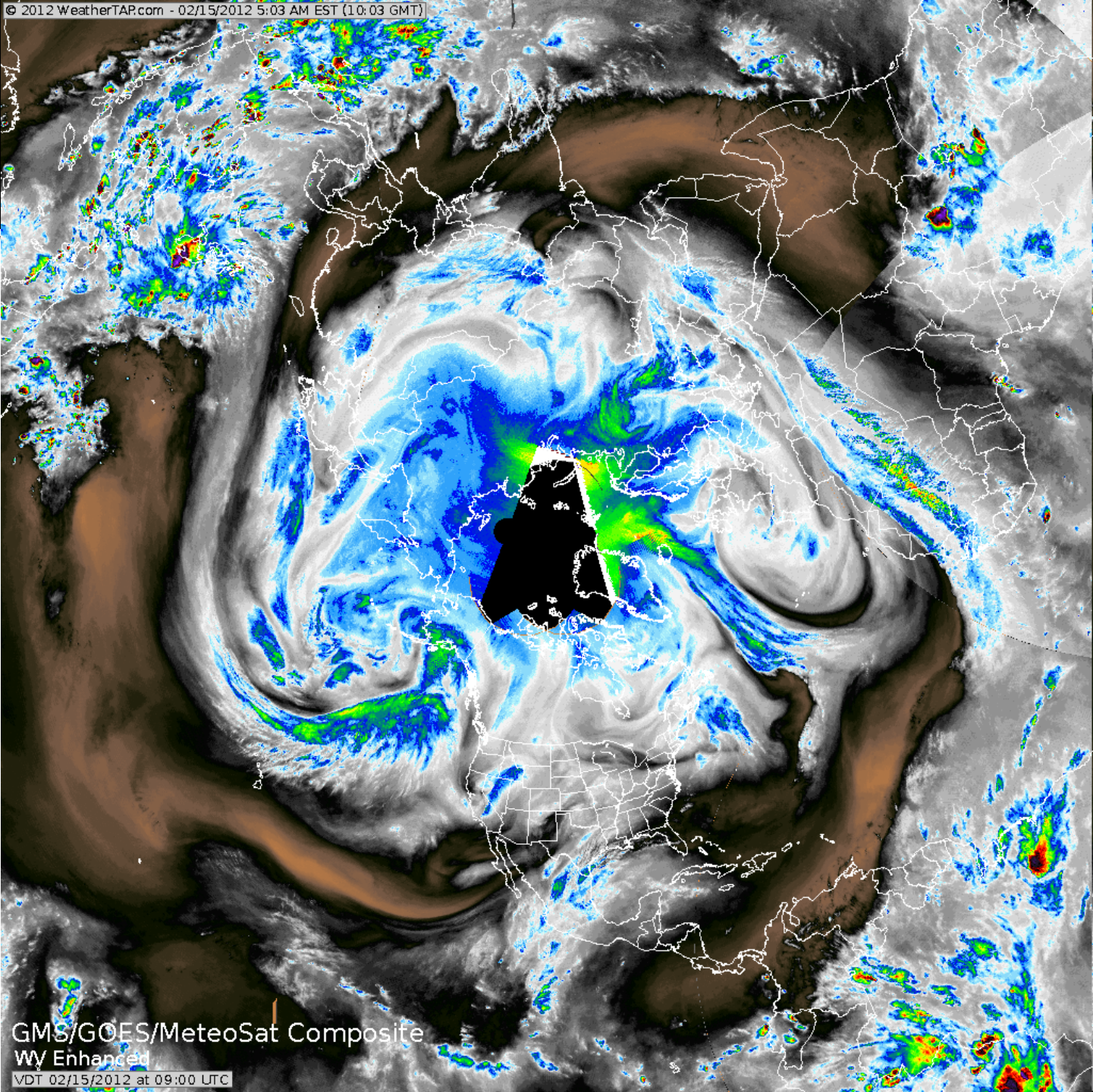
Mid-  
atmosphere  
Storm track  
2-16-2012





GMS/GOES/MeteoSat Composite  
WV Enhanced  
VDT 02/16/2012 at 12:00 UTC

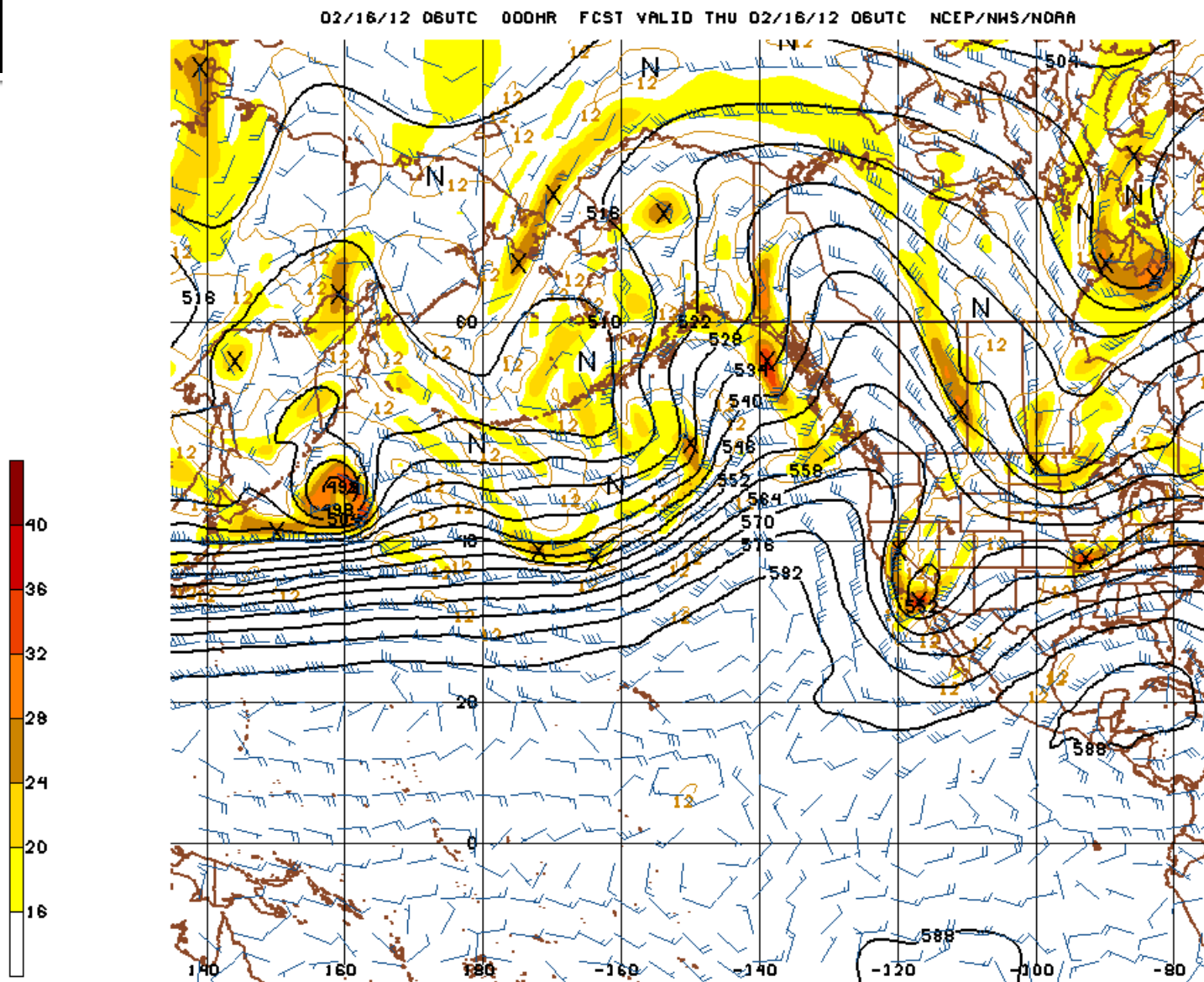




GMS/GOES/MeteoSat Composite  
WV Enhanced  
VDT 02/15/2012 at 09:00 UTC

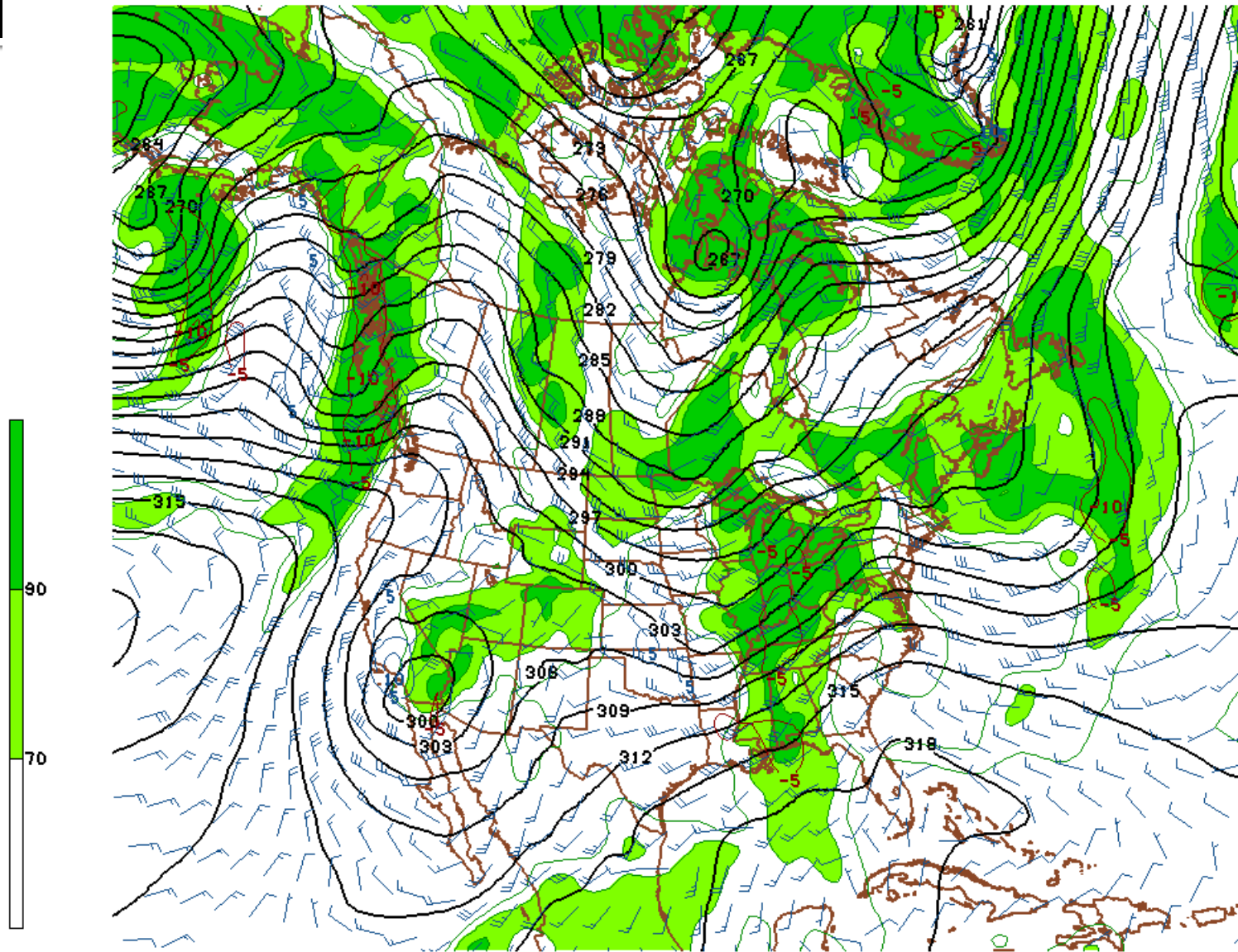


# Pacific mid-atmosphere storm track – 2/15/2012



# Mountain-top storm track and winds - 02/15/2012

02/16/12 06UTC 000HR FCST VALID THU 02/16/12 06UTC NCEP/NWS/NOAA

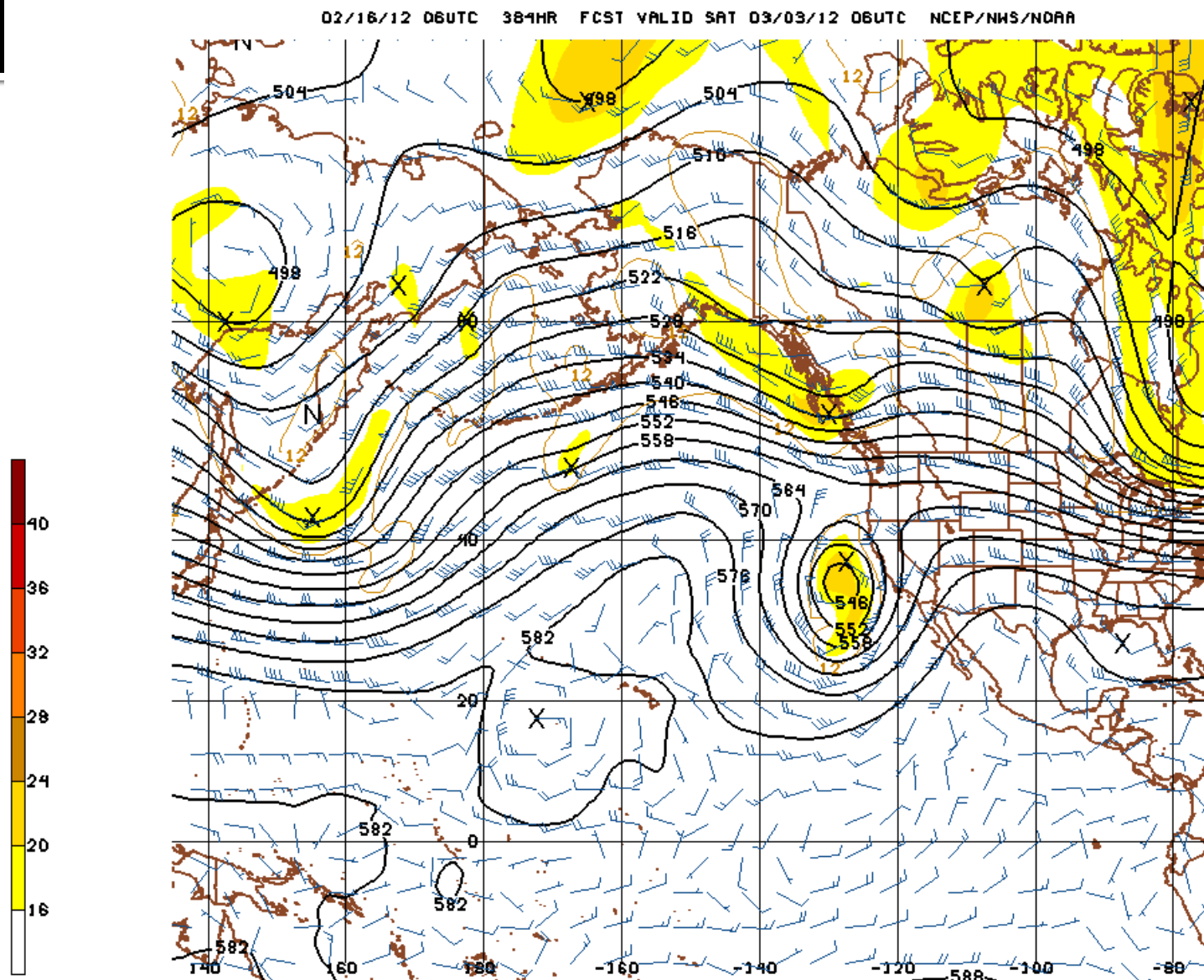


120216/0600V000 GFS 700MB HT, REL HUMIDITY AND OMEGA



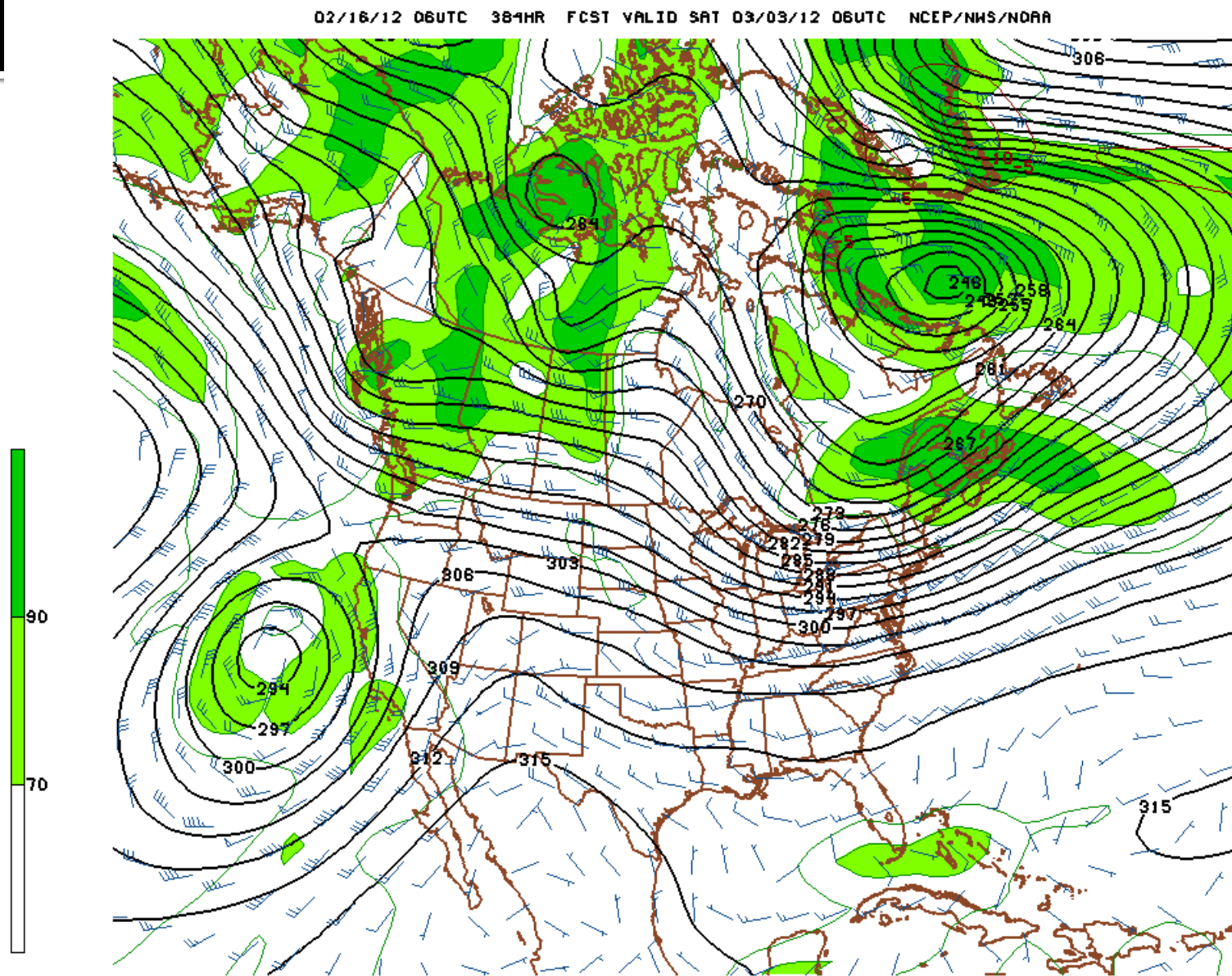
# Pacific mid-atmosphere storm track:

3/03/2012



120303/0600V384 6FS 500MB HT AND 6E0 ABSOLUTE VORTICITY

# US mountain-top storm track and moisture: 3/03/2012





# What changes 2/15 to 3/03?

- Pacific storm track still active but splits with active areas:
  - West to east across southern Canada
  - SW US “closed lows”
- For Colorado active storm pattern through February for mountains; Plains active NE next 7-10 days then action shifts to SW mountains and possibly plains.
- No big storms loom until March and then we need some “Luck o’ the Irish”

# Possible snow dates and estimated amounts of melted precipitation Feb 16 to March 3, 2012

Locations	Chance for snow (dates)	Amounts
NE Colorado	3 (18, 19/20, 25/26) March 3-6	(< 0.15in; ~0.25in; ????) ??????
SE Colorado	2 (20/21, 25/26)	(<0.25in; ????????)
NW Colorado	5 (16/17, 18, 20/21, 22/23, 25/26); Mar 3-6	( ~0.25in twice; ~0.50in twice; ??????) ??????
SW Colorado	19/20; March 3-5	( 0.25 – 0.50 in; ??????)



*"Climate is what you  
expect;  
weather is what you  
get"*  
- Robert A. Heinlein

*Dewberry  
Innovative Solutions for  
Science and Engineering*

John F. Henz, CCM  
Dewberry  
1095 S. Monaco Parkway  
Denver CO  
  
[jhenz@dewberry.com](mailto:jhenz@dewberry.com)

