



COLORADO WATER CONSERVATION BOARD

DIRECTOR'S REPORT

MARCH 2011

STATE OF COLORADO

Colorado Water Conservation Board

Department of Natural Resources

1313 Sherman Street, Room 721
Denver, Colorado 80203
Phone: (303) 866-3441
Fax: (303) 866-4474
www.cwcb.state.co.us



MEMORANDUM

TO: Colorado Water Conservation Board

FROM: Jennifer Gimbel
Brent Newman
CWCB Staff

DATE: March 15-16, 2011

SUBJECT: **Agenda Item 6d**, March 2011 CWCB Board Meeting Director's Report

John W. Hickenlooper
Governor

Mike King
DNR Executive Director

Jennifer L. Gimbel
CWCB Director

Pg. 3 – STATEWIDE

- **Ground Water Commission Meeting**
- **Drought Status Update**
- **Colorado Water Congress “Down Under” a Huge Success**
- **Water Tables Event Raises Tens of Thousands of Dollars for the CSU Water Resources Archives**

Pg. 4 – ARKANSAS RIVER BASIN

- **Arkansas River Decision Support System (ARKDSS) Feasibility Study**

Pg. 4 – COLORADO RIVER BASIN

- **High Flow Event (HFE) Protocol Environmental Assessment (EA) Comment Period Extended**
- **Glen Canyon Technical Work Group (TWG) and Adaptive Management Work Group (AMWG) Meetings**
- **Colorado River Water Use**
- **Colorado River Water Availability Study (CRWAS)**
- **Lake Mead Continues to Rise, Snows in the Colorado System Suggest that there may be Lake Powell Equalization Releases**
- **City of Aspen FERC Application**
- **15-Mile Reach Late Summer Flow Augmentation**

Pg. 6 – PLATTE RIVER BASIN

- **Platte River Recovery Program**
- **South Platte Decision Support System (SPDSS)**
- **CWCB Partnership for Fourmile Canyon Post-Fire Recovery**
- **Chatfield Downstream Channel Improvement Project Inspection**

Pg. 8 – SAN JUAN/SAN MIGUEL - DOLORES RIVER BASIN

- Southwest RAC Wild & Scenic Meetings
- Drought Assessment for Recreation & Tourism – Southwestern Colorado
- NOAA Winter Mobile Radar Project
- San Juan River Recovery Implementation Program (SJRRIP) Coordination Committee (CC) Meeting
- River Protection Workgroup
- Dolores River Dialogue

Pg. 10 – GUNNISON RIVER BASIN

- Uncompahgre Wild & Scenic Stakeholders Meeting
- Aspinall Unit Preliminary Final Environmental Impact Statement Released

Pg. 10 – AGENCY UPDATES

- CWCW Water Efficiency Grant Fund Program Update
- Water Conservation Plans Under Review
- Governor’s Water Availability Task Force
- HB1051/Data Collection Working Group
- Water Conservation Technical Advisory Group (WCTAG)
- SWSI 2010 Municipal & Industrial Water Conservation Strategies Report
- Feasibility of Permanency and Penetration of Water Conservation Savings
- Conservation Planning Guidance Document Revision Update
- Joint Front Range Climate Change Vulnerability Study
- Loan Repayment Delinquency
- Loan Financial Activity
- Weather Modification Permitting Program Update
- Stream and Lake Protection Section De Minimis Cases
- Presentation on Dominguez Canyon Wilderness Area ISF Water Rights

Pg. 14 – ATTACHMENTS

- 01 Finance Section - March Design & Construction Status Report
- 02 Instream Flow and Natural Lake Level Program – Summary of Resolved Cases
- 03 WRSA Pending Projects
- 04 WSRP In Progress Projects
- 05 WSRP Completed Projects
- 06 WSRP Balance February 2011
- 07 House Bill 10 – 1051 : Covered Entities’ Water Efficiency Reporting
- 08 February 2011 Drought Update
- 09 CWCW Financial Activity Report for Fiscal Year 2011
- 10 Letter Regarding City of Aspen Castle Creek Hydroelectric Project
- 11 Late Summer and Fall Reservoir Operation Statistics for 2010
- 12 Effect of Late Irrigation Season Reservoir Releases on Flow in the 15-Mile Reach

~STATEWIDE~

GROUND WATER COMMISSION MEETING: The Ground Water Commission (GWC) held a meeting on February 18, 2011, in Denver, CO. The agenda items included routine reports and a presentation on the groundwater level measurement program. Under new business, the Upper Black Squirrel Creek Ground Water Management District (GWMD) requested that the GWC file a statement of opposition to an application for surface water rights within the District's Boundaries. Additionally, under new business, the North Kiowa-Bijou GWMD asked the GWC to support draft legislation to impose an assessment on small capacity wells. Neither request was acted on by the GWC due to lack of notice. The Ground Water Commission will hold its next meeting on May 20, 2011, in Castle Rock, CO. For more information visit: <http://water.state.co.us/groundwater/CGWC/Pages/default.aspx>. (*Suzanne Sellers*)

DROUGHT STATUS UPDATE: La Nina conditions that we have seen since last fall continue to persist, influencing Colorado weather with above average moisture in the northern mountains. The southern portion of the state has seen a drop in precipitation over the last month and conditions in the region will be closely monitored over the coming weeks for deteriorating conditions. The eastern plains of Colorado have received below normal precipitation since the beginning of the water year in October 2010. Although recent storms have brought some moisture, overall precipitation remains below average. The basins in the southwest corner of the state: the San Miguel, Dolores, Animas, and San Juan, received heavy snowfall in late December but have received well below average precipitation in January and February to date. The Rio Grande and the San Luis valley received near or below normal precipitation in January and is now below normal for the water year.

Statewide snowpack has decreased slightly since January 1st but remains above average at 116%. Individually, five of the eight basins are above 100% of average. The North Platte has the highest percent snowpack at 131% of average; the Colorado, Gunnison, Yampa/White and South Platte sit at 127%, 120%, 124%, and 122% of average, respectively. The basins in the southwest corner of the state: the San Miguel, Dolores, Animas, and San Juan, and the Arkansas basin are all near normal at 100% and 105% of average respectively. The Rio Grande basin has fallen below normal at 86%. Statewide reservoir storage remains strong and water providers continue to be in a "wait and see" mode. The next 2-3 months will give a better indication of what conditions can be expected throughout the spring and early irrigation season. (*Taryn Hutchins-Cabibi*)

COLORADO WATER CONGRESS "DOWN UNDER" A HUGE SUCCESS: The year's Annual Meeting of the Colorado Water Congress was a unique, fun, and informative experience because of the nearly three dozen Australian representatives who spoke at, and participated in, the event. The various panels included federal, state, academic, and private representatives from Australia, and Colorado. Representatives of Colorado who spoke included Governor Hickenlooper, Executive Director King, Assistant Director Davis, Director Gimbel, and several staff members from the CWCB, the Office of the Attorney General and the Office of the State Engineer. I look forward to the upcoming summer event. (*Ted Kowalski*)

WATER TABLES EVENT RAISES TENS OF THOUSANDS OF DOLLARS FOR THE CSU WATER RESOURCES ARCHIVES: Once again, the CSU Water Tables Event surpassed previous events in both participation, and money raised, for the Archives. This event

raised more than \$45,000 for the Archives, and there were many laughs, information, and stories shared over the evening. Congratulations to the Archives for another excellent event, and thanks to all of the table hosts and participants who supported the Archives this year. *(Ted Kowalski)*

~ARKANSAS RIVER BASIN~

ARKANSAS RIVER DECISION SUPPORT SYSTEM (ARKDSS) FEASIBILITY

STUDY: The feasibility study for an Arkansas River decision support system (ArkDSS) commenced in late January 2010. The purpose of the feasibility study is to define the ArkDSS's purposes, uses, users, components, data requirements, costs and the schedule required to develop such a system. The results of the feasibility study will be used by the CWCB and DWR for recommending the development of an ArkDSS to the General Assembly.

A proposed implementation for ArkDSS is being formulated in coordination with an Arkansas Basin Roundtable technical subcommittee. Once the Roundtable endorses the plan, it will be presented to the Board for approval, most likely at the May Board meeting. The draft report will also be available for review, with a final report to be completed after a public comment period. The schedule has been delayed several months to allow more stakeholder input into the process. *(Ray Alvarado)*

~COLORADO RIVER BASIN~

HIGH FLOW EVENT (HFE) PROTOCOL ENVIRONMENTAL ASSESSMENT (EA)

COMMENT PERIOD EXTENDED: The Department of the Interior has extended the comment period for the draft EA HFE Protocol, which are now due on March 18, 2011. The State of Colorado continues to work with the other Colorado River Basin States, and the Department of the Interior, to assure that the Protocol strikes the proper balance for protection of natural resources of the Colorado River basin. *(Ted Kowalski)*

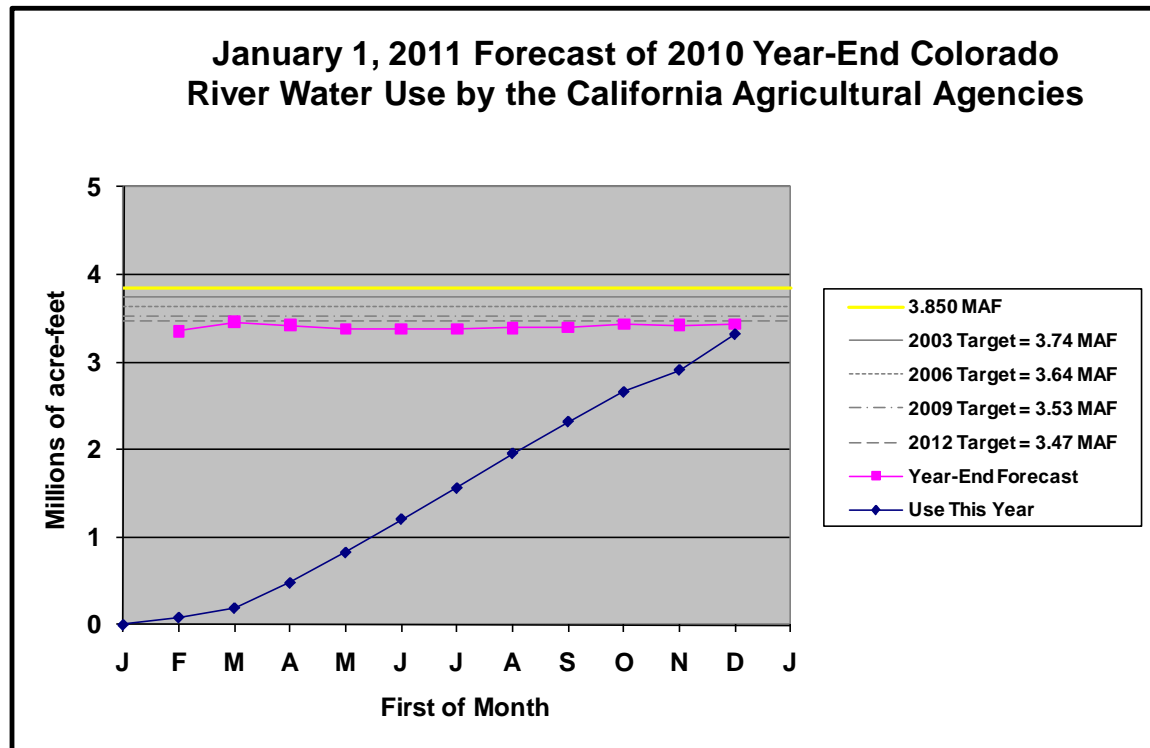
GLEN CANYON TECHNICAL WORK GROUP (TWG) AND ADAPTIVE

MANAGEMENT WORK GROUP (AMWG) MEETINGS: The Annual Reporting meeting and first annual TWG meeting was held on January 18-20, 2011 in Phoenix, Arizona. The TWG developed a draft 2011 budget and work plan, which was then presented to the AMWG at the February 9-10, 2011 AMWG meeting. The primary purposes of this meeting were to discuss: 1) the High Flow Experiment Synthesis reports; 2) the status of the sediment inputs; and, 3) the Fiscal Year 2011 work plan. The Board will receive an update on these developments at the Board meeting. *(Ted Kowalski)*

COLORADO RIVER WATER USE: As of January 1, 2011, storage in the major Upper Basin reservoirs decreased by 452,600 acre-feet and storage in the Lower Basin reservoirs increased by 458,100 acre-feet during December 2010. Total system active storage as of January 9 was 32.300 million acre-feet (MAF), or 54 percent of capacity, which is 0.758 MAF less than one year ago. (Upper Basin reservoirs increased by 0.004 MAF, and Lower Basin reservoirs decreased by 0.763 MAF.)

The preliminary year-end estimate for 2010 is 3.436 MAF. The end-of-year measure for 2008 California agricultural consumptive use of Colorado River water under the first three priorities and the sixth priority of the 1931 *California Seven Party Agreement* was reported as 3.604 MAF;

the preliminary end-of-year measure for 2009 is 3.290 MAF. The target under the Interim Surplus Guidelines (ISG) for the end of 2006 was 3.640 MAF, the target for 2009 was 3.530 MAF, and the target for 2012 is 3.470 MAF, thus California is in compliance with the ISG. (Andy Moore)



COLORADO RIVER WATER AVAILABILITY STUDY (CRWAS): A scope of work has been drafted and under staff review. There will be five tasks, Project Management, Project Outreach, Model Refinements, Analysis Refinements and Reporting Refinements under this effort. Project Management addresses the internal management of the CRWAS team. Project Outreach will address the two sets of meetings identified for this effort. The first public outreach effort will be meetings with the basin roundtables where it will be presented, the public comments and how those comments were or will be addressed. The second set of basin roundtable meetings will be presenting the results, lessons learned and how the study can potentially be used in each basin. Model, Analysis and Reporting Refinements addresses the changes identified from the public review. It is hoped that the first set of public outreach meetings can be scheduled in the April timeframe. (Ray Alvarado)

LAKE MEAD CONTINUES TO RISE, SNOWS IN THE COLORADO SYSTEM SUGGEST THAT THERE MAY BE LAKE POWELL EQUALIZATION RELEASES:

Due to rains in the lower basin, and increased releases from Lake Powell, Lake Mead rose to elevation 1095 by February 28, 2011. In addition, the current Colorado River basin snowpack above Lake Powell is estimated to be 121% of average. With these current projections, it is expected that the March, 2011 U.S. Bureau of Reclamation 24 month study will reflect the fact that the actual and projected operations of Lake Powell will be adjusted because of the increased

probability that Equalization releases will occur in water 2011. At the time that this report is being written, the March 24 month study is not yet available. (*Ted Kowalski*)

CITY OF ASPEN FERC APPLICATION: As follow-up to the Board's discussion of this matter in January, a letter from Karl Kumli, the City's counsel, is attached to this report. (Attachment 10) The letter confirms the statements that the City will include in its FERC application based upon the January Board discussion. (*Linda Bassi*)

15-MILE REACH LATE SUMMER FLOW AUGMENTATION: On February 9, 2011, water managers met to review 2010 operations to augment late summer flows in the 15-Mile Reach and discuss the outlook for 2011. A draft summary of 2010 conditions and operations was discussed and information from that report is included below.

May 1 snowpack for the Upper Colorado river basin was approximately 70% of average. Warm temperatures caused quick runoff and high flows for a short period of time. Reservoirs in the basin had high carryover storage and were able to fill. Summer was warm and dry with low flows. The USFWS set a target flow in the 15-Mile Reach of 1240 cfs, which is the average-year recommended flow. The target was later decreased to 1100 cfs and then 1000 cfs due to dry conditions. The dry-year recommended flow for the 15-Mile Reach is 810 cfs.

Reservoir operators released over 97,000 AF to augment 15-Mile Reach flows during the months of July through October to maintain an average flow of 1,104 cfs at the Palisade gage. A list of the participating reservoirs and their contributions is included as an attachment. (Attachment 11) Also attached is a graph depicting the flows in the 15-Mile Reach and the estimated flows that would have occurred absent the reservoir releases. (Attachment 12) The graph indicates that the 15-Mile Reach could have gone dry for approximately nine days in mid-September and would have been significantly below the target flows for almost the entire season. The flows would have been below the dry-year target of 810 cfs for approximately 70 days. Thus the reservoir releases were critical this year in maintaining flows and the reservoir managers are to be commended for their efforts.

Reservoir operators also voluntarily released approximately 24,000 AF of water to maintain flows in the river near the Shoshone Power Plant at or near their typical levels to satisfy agreements that allow for the late summer flow augmentation to occur. The Shoshone Power Plant was operating at limited capacity due to maintenance issues and therefore not placing calls on the river for its usual amount. Xcel energy hopes to have repairs made before runoff begins this year. If repairs are not completed by that time, similar restrictions will be placed on Shoshone Power Plant operations and similar agreements for reservoir releases to maintain flows at Shoshone will be required in 2011. (*Michelle Garrison*)

~PLATTE RIVER BASIN~

PLATTE RIVER RECOVERY PROGRAM: The Platte River Recovery Implementation Program ("Program") did not hold a Governance Committee meeting since the last CWCB meeting. However, Suzanne Sellers participated on a committee to edit and approve the Scope of Work for the Lower Platte River Stage Change Study which has implications on future program activities related to the pallid sturgeon. Additionally, Ms. Sellers attended Water Advisory Committee, Land Advisory Committee, Technical Advisory Committee and Finance

Committee meetings, conference calls and workshops. The next Governance Committee Meeting will be held on March 8-9, 2011 in Kearney, NE. For more information, please visit: <http://www.platteriverprogram.org/Pages/default.aspx>. (Suzanne Sellers)

SOUTH PLATTE DECISION SUPPORT SYSTEM (SPDSS): The alluvial groundwater modeling is still moving forward into the calibration phase of that effort. Software issues with a pre-processor that was address previously, has been incorporated into the calibration process. The calibration of the model has unique challenges because of the scope and breadth of the basin and hydrogeology, however these challenges are being addressed as they come forward with the final product being a calibrated basin wide alluvial groundwater model for the South Platte. (Ray Alvarado)

CWCB PARTNERSHIP FOR FOURMILE CANYON POST-FIRE RECOVERY: The CWCB is partnering with the Urban Drainage & Flood Control District (UDFCD), Boulder County, the City of Boulder, and other stakeholders to provide new technical information related to the recent Fourmile Fire burn area. A situation exists concerning a potential increased flood threat to citizens and visitors in and downstream of the fire burn area resulting from the September 2010 wildfire that destroyed 169 homes in and around a popular mountain community west of Boulder. Preliminary rainfall/runoff estimates suggest that this threat may be substantial. Experts currently believe that the risk to life and property in the affected areas is extremely high along Fourmile Creek. Based on experiences following the 1996 Buffalo Creek and 2002 Hayman wildfires in Jefferson and Douglas Counties, flood experts from the CWCB, U.S. Geological Survey (USGS), the National Weather Service (NWS), UDFCD and other agencies believe that there is an increased post-fire flood risk. The purpose of the technical work is to develop post-fire peak flow rates through hydrologic modeling, and then route those computed peak flows from the Fourmile Fire burn area to Boulder Creek and Fourmile Canyon Creek. The model results and recommendations will be shared with forecasters, hydrologists, engineers, first responders, and emergency managers involved with early warning and response. In a real-time mode, the updated model will take its rainfall inputs directly from the ALERT system. Updates can be provided by staff in the Director's Report for the May 2011 CWCB meeting. (Kevin Houck and Tom Browning)

CHATFIELD DOWNSTREAM CHANNEL IMPROVEMENT PROJECT INSPECTION: The CWCB manages several miles of floodplain lands along the South Platte River between Coal Mine Avenue and Oxford Avenue in the Denver Metropolitan area. It is important for the project to receive at least a "minimally acceptable" rating by the Corps of Engineers, Omaha District to maintain eligibility in the PL84-99 reimbursement program. Each year the Corps, in cooperation with the CWCB and Urban Drainage & Flood Control District, inspects the project prior to spring flows. The annual inspection report guides maintenance tasks for the year.

Within the project reach, the CWCB is also working with UDFCD, the Attorney General's Office, City of Englewood, and an engineering consultant to implement boat chute modifications at Union Avenue chute #1 that will address public safety issues identified in reports by McLaughlin Water Engineers. The City has signed and endorsed construction modifications to Chute # 1. Staff hopes to facilitate temporary access agreements between UDFCD and the City of Englewood that will enable modifications prior to the 2011 high flow events. (Joe Busto and Tom Browning)

~SAN JUAN/SAN MIGUEL-DOLORES RIVER BASIN~

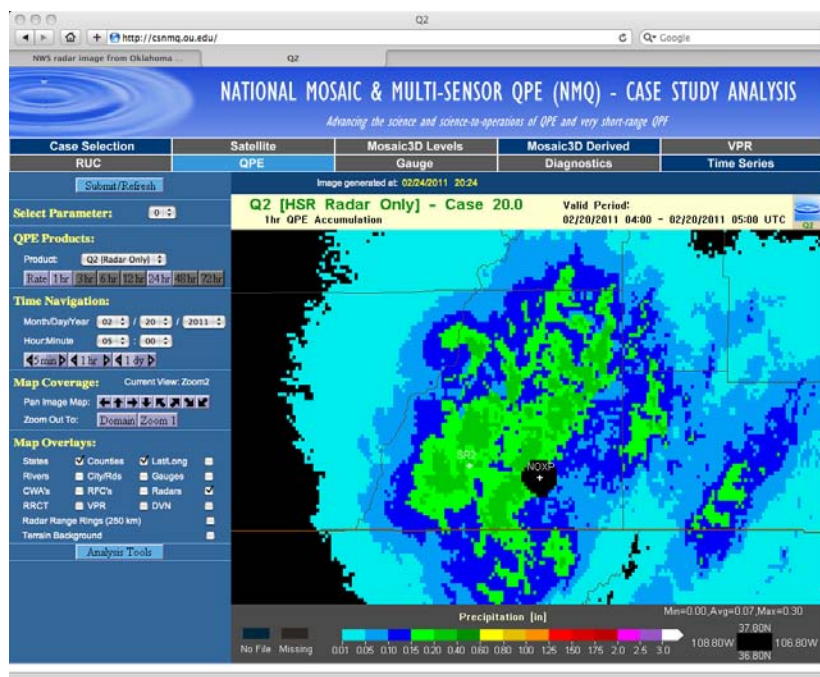
SOUTHWEST RAC WILD & SCENIC MEETINGS: The Bureau of Land Management (BLM) Southwest Resource Advisory Council (RAC) Subgroup held a series of public meetings on January 4-5, 2011 in Telluride and Naturita, CO and January 20, 2011 in Norwood, CO to discuss Wild and Scenic River suitability. The meetings included providing background information to the public on the Wild & Scenic process and collecting public comments on eligible river segments. The Southwest RAC Subgroup then held meetings on February 7 and 16, 2011 and voted to recommend the following eligible segments as “suitable”: La Sal Creek Segments 2 & 3; Dolores River Segments 1 & 2; Lower Dolores River; San Miguel River Segments 1, 2 (split vote - not unanimous), 3, 5, & 6; Saltado Creek; Beaver Creek; and Tabeguache Creek Segment 1. The Southwest RAC Subgroup voted to recommend the following eligible segments as “not suitable”: North Fork Mesa Creek; Tabeguache Creek Segment 2 (split vote – not unanimous); La Sal Creek Segment 1; Ice Lake Creek Segment 2; Spring Creek; Lion Creek Segment 2; Naturita Creek and Dry Creek. Note that of those segments that were recommended as “suitable”, the portions of those segments that were adjacent to private land were excluded from this recommendation with a few exceptions where land owners requested suitability. The Southwest RAC Subgroup presented its recommendations to the Southwest RAC on February 25, 2011 in Salida, CO. At that meeting, the Southwest RAC voted (split vote - not unanimous) to accept the recommendations as presented. (*Suzanne Sellers and Jeff Baessler*)

DROUGHT ASSESSMENT FOR RECREATION & TOURISM- SOUTHWESTERN COLORADO: Historically, the Tourism and Recreation sector has been evaluated on a limited basis for drought impacts and vulnerabilities. However, over the past decade, drought impacts to this sector have had far reaching effects. Consequently, the State Drought Plan recommended conducting a closer review of information and data that could improve our knowledge of the impacts in this sector and adopt mitigation actions to safeguard the industry and the jobs that it supports.

The CWCB is beginning a two part project focusing on a drought assessment for recreation and tourism in the Southwest Basin. The first phase is to conduct a scoping process for the pilot project including the identification of tourism and recreational industries in the basin that will be evaluated for drought vulnerabilities. The scoping process will evaluate the metrics used in the State Drought Plan Vulnerability Assessment and identify additional data and information to fill gap areas and improve the vulnerability assessment tool. The process will develop a structure for stakeholder involvement and contribution to the project. Phase I will be completed by June 30, 2011. (*Taryn Hutchins-Cabibi*)

NOAA WINTER MOBILE RADAR PROJECT: As a follow up to a summer mobile radar project funded by Southwestern WCD, Colorado Division of Emergency Management and the CWCB, the NOAA Severe Storms Lab in Norman, Oklahoma mobilized a Doppler radar truck and located it at the Durango Airport from February 1-21, 2011. The project goals were to: 1) collect data in a radar coverage deficient area, 2) demonstrate the utility of gap filling radars, and 3) make advances in the science of quantitative precipitation estimation for winter storms using radar derived precipitation estimates calibrated with ground measurements. CWCB staff deployed two ETi high resolution precipitation gauges four miles from the Durango airport and

at Fort Lewis College to assist NOAA in this data collection effort. The following link provides a radar loop of a storm that brought between eight and eleven inches of snow depth to the San Juan Mountains. <http://ftp.nssl.noaa.gov/users/vasiloff/swco/Feb19-21.mov>. (The radar loop requires installation of Quick Time). For more information about the project contact Steve Vasiloff at steven.vasiloff@noaa.gov. (Joe Busto)



SAN JUAN RIVER RECOVERY IMPLEMENTATION PROGRAM (SJRRIP)

COORDINATION COMMITTEE (CC) MEETING: The San Juan River Recovery Implementation Program held its first CC meeting of 2011 on February 3, 2011. Some of the topics on the agenda were the stocking plan for Animas La Plata Reservoir, the 2012 budget, and the hydrology model update. These topics will be continue to be developed through the various subcommittees, and action may occur at the May 2011 annual meeting, set for May 11-12, 2011 in Durango, Colorado. The biggest issues facing the SJRRIP (and the UCRIP) in the short term are budgetary. For more information, please see the Program's link: <http://www.fws.gov/southwest/sjrip/>. (Ted Kowalski)

RIVER PROTECTION WORKGROUP: The River Protection Workgroup ("RPW"), continues to conduct work on the San Juan River basin. The San Juan River Group met on January 28, 2011 and February 24, in Pagosa Springs, Colorado. This group is coming to a close. The Board will be given an update at the Board meeting. For more information, see the following link: <http://ocs.fortlewis.edu/riverprotection/>. (Ted Kowalski)

DOLORES RIVER DIALOGUE: The Dolores River Dialogue ("DRD") Science Committee met on February 1, 2011 and discussed desired ecological outcomes and plans for scientific research in 2011-12. The DRD Hydrology Committee met on March 1, 2011, and discussed 2011 Forecast & Spill Operations, the new SNOTEL site, and other topics. The Spring full DRD meeting will be held on April 28, 2011. For more information, please visit the DRD website at <http://ocs.fortlewis.edu/drd/>. (Linda Bassi)

~GUNNISON RIVER BASIN~

UNCOMPAHGRE WILD & SCENIC STAKEHOLDERS MEETING: The Uncompahgre Wild & Scenic Stakeholders' ("Stakeholders") group held meetings in Delta, CO on January 10, 21 & 24 and February 3, 2011 to address those segments in the Gunnison River Basin outside the Dominguez-Escalante National Conservation Area (NCA). The stakeholder group reached consensus on many of the segments considered and has prepared a letter to the Bureau of Land Management (BLM) recommending that the following segments are "not suitable": Deep Creek, West Fork of Terror Creek, Gunnison River Segment 2 and Roubideau Creek Segment 2. The group did not come to consensus on whether or not Monitor Creek, Potter Creek and Roubideau Creek Segment 1 are "suitable". However, the final letter recommends several management tools and conditions that the Stakeholders would like maintained for these segments. Several environmental advocacy organizations will submit a separate report detailing why they believe these three segments should instead be found "suitable". The next Stakeholder Meeting will be held on February 24, 2011 in Delta, Colorado and will focus on those eligible segments located within the Dominguez-Escalante NCA. (*Suzanne Sellers*)

ASPINALL UNIT PRELIMINARY FINAL ENVIRONMENTAL IMPACT STATEMENT RELEASED: The U.S. Bureau of Reclamation has released a Preliminary Final Environmental Impact Statement for Aspinall Reoperations to cooperating agencies. Comments will be due April 1, 2011. After responding to cooperating agency comments, the FEIS will be released for public review. DNR, CWCB and CDOW staffs are involved in cooperating agency meetings and trying to resolve remaining issues in the PFEIS. (*Michelle Garrison*)

~AGENCY UPDATES~

CWCB WATER EFFICIENCY GRANT FUND PROGRAM UPDATE: The CWCB has received three grant applications since January 2011. These applications are currently under review by staff and include the following:

- **Castle Pines Metro District:** \$10,800 implementations grant to conduct irrigation audits and address inefficiencies since installation. The goal is to improve the use of ET controllers throughout the system.
- **Left Hand Water District:** \$45,000 to implement three water conservation goals identified in the district's Water Conservation Plan. The project includes an indoor water audit program, leak detection and repair, and commercial water audits.
- **North Table Mountain Water and Sanitation District:** \$25,370 to implement three water conservation goals identified in the district's Water Conservation Plan. The project includes a sonic leak detection program, landscaping regulations, and irrigation audits (pilot program). (*Deborah Burrell*)

WATER CONSERVATION PLANS UNDER REVIEW: The CWCB is evaluating and working with providers on the following Water Conservation Plans:

- City of Arvada

- City of Broomfield
- City of Louisville
- City of Steamboat Springs/Mount Werner Water
- Consolidated Mutual Water Company
- Grand Valley Regional Water Conservation Plan
- Meridian Metropolitan District
- Security Water and Sanitation District
- Town of La Junta (*Ben Wade*)

GOVERNOR’S WATER AVAILABILITY TASK FORCE: *Please see included February 2011 Drought Update for information on current drought conditions throughout the state. A Joint Meeting of the Water Availability Task Force and Flood Task Force is scheduled for March 17, 2011 at the Colorado Division of Wildlife Headquarters. Please check the website (<http://cwcb.state.co.us/public-information/flood-water-availability-task-forces/Pages/main.aspx>) for additional information. (Ben Wade)*

HB1051/DATA COLLECTION WORKING GROUP: *Please see attached Information Sheet on HB10-1051 process and timeline. On January 13, 2011 the CWCB brought together the WCTAG with their policy oriented staff to touch base on the assumptions that were made during the negotiation of HB1051. This meeting was a good “check-in” to apprise everyone involved of what the current status of the process was. In addition to the policy staff, this meeting saw an expanded group stakeholders picked up since the December meeting. CWCB staff went over a summary of other state data collection initiatives as well as discussing possible operating procedures for the group over the next year. The official kick off meeting was held on Feb. 23, 2011 and had additional stakeholders added from smaller utilities as well as from the west slope. During the February meeting the group went over roles and responsibilities, meeting schedules and benchmarks for the remainder of the process, and jumped into some categories of water use data. CWCB staff and WCTAG members provided background materials on other data collection initiatives as well as a sample data collection worksheet that created much discussion. This was a very productive meeting with much progress. Reoccurring meetings are scheduled for the last Wednesday of every month until the end of the year. (Kevin Reidy)*

WATER CONSERVATION TECHNICAL ADVISORY GROUP (WCTAG): The WCTAG did not meet during this last time period on normal WCTAG business but did meet regarding HB1051. (*Kevin Reidy*)

SWSI 2010 MUNICIPAL & INDUSTRIAL WATER CONSERVATION STRATEGIES REPORT: The *SWSI 2010 M&I Water Conservation Strategies Report* is being finalized with all comments compiled in a matrix and edits being made to the report. The CWCB, with the assistance of the WCTAG, will be prioritizing next steps for implementation stemming from the recommendations of the *SWSI 2010 M&I Water Conservation Strategies Report*. (*Kevin Reidy*)

FEASIBILITY OF PERMANENCY AND PENETRATION OF WATER

CONSERVATION SAVINGS: In late January, the CWCB received a presentation on the study from Chris Goemans (Colorado State University) to assess what barriers and opportunities exist at the provider level in order to carry out future conservation savings potential and penetration rates research. Working with a subset of the partner utilities, such as Denver Water, Aurora

Water, Colorado Springs Utilities, Westminster and Fort Collins, this project would also include a demonstration of the statistical analysis that can be done with existing information, including illustrating areas of need. In early March, CWCB staff, CSU and a small advisory group will meet to go over the findings and determine next steps. (*Kevin Reidy*)

CONSERVATION PLANNING GUIDANCE DOCUMENT REVISION UPDATE: A scope of work has been developed that outlines the incorporation of the latest water conservation research into the existing conservation planning guidance documents. The purpose is to update the guidance documents to be more useful to covered entities by incorporating the latest and most relevant water conservation information. A number of workshops are proposed to ensure inclusion of covered entities in the development process of the guidance document. At present time, a contractor is being selected for the project. (*Kevin Reidy*)

JOINT FRONT RANGE CLIMATE CHANGE VULNERABILITY STUDY: CWCB comments on this report have been addressed and the report has been handed over to the Water Research Foundation for editing and publication. A final version of the report is due out later this year. (*Taryn Hutchins-Cabibi*)

LOAN REPAYMENT DELINQUENCY: Loan Repayments received relative to the Water Project Construction Loan Program have been reviewed for the period covering July 2010 through February 2011. The effective due date of the payment is inclusive of the Board's current 30 day late policy. Hence, the date the payment was received was compared to the last day allowable prior to the payment being considered late.

Repayments due for the first eight months of Fiscal Year 2011 totaled 181. There were six loan payments not received on time during this period. The loan payments from Pine River – Bayfield Ditch Company, Delta Canal Company, Fuchs Ranches, Inc., John Peroulis and Sons, Partnership and Shultz Farm, Inc. were less than 30 days late. The loan payment from Kenosha Trout Club was less than 60 days late. The loan payment due in June 2010 for the Coon Creek Reservoir and Ditch Company was received in July 2010. The loan payment due in June 2010 for the Town of Starkville has not been received to date. Thus, the on-time performance for the total repayments due was 97% in compliance or 3% not in compliance.

As additional notes: (1) Rodney Preisser has not met his obligations since Fiscal Year 2007 and has filed Chapter 11 Bankruptcy; (2) the Town of Starkville has not met its obligations since Fiscal Year 2006; and (3) the Pinon Mesa Ranches Community Association's loan is in default and has been referred to the State's Central Collections Services for disposition of the remaining balance. (*Steve Biondo*)

LOAN FINANCIAL ACTIVITY: Loan Financial Activity relative to the Water Project Construction Loan Program for Fiscal Year 2011 is detailed on the following attachment. Funds received relative to loans in repayment totaled \$10.1 M for this period. Funds disbursed relative to new project loans totaled \$22.7 M for this period. Net activity resulted in \$12.6 M disbursed from the CWCB Construction Fund and the Severance Tax Trust Fund Perpetual Base Account (STTFPBA) over the total received.

Further breakdown is summarized as follows: The Construction Fund portion consists of \$6.6 M in receivables and \$6.8 M in disbursements for a total net activity of \$0.2 M disbursed over

received. The STTFPBA consists of \$3.5 M in receivables and \$15.9 M in disbursements for a total net activity of \$12.6 M disbursed over received. (*Steve Biondo*)

WEATHER MODIFICATION PERMITTING PROGRAM UPDATE: On February 17, 2011 Senate Bill 90 was introduced to potentially re-enact the existing weather modification statute that establishes a permitting requirement for weather modification activities in Colorado. The CWCB has managed the program since 1987. Director Gimbel along with Nolan Doesken (State Climatologist), and Arlen Huggins (nationally recognized cloud seeding expert from DRI) testified and provided information about the program to the Senate Agricultural and Natural Resources Committee (Committee). Bruce Whitehead from the Southwestern Water Conservation District testified in favor of the Bill. Chris Treese also expressed support for the bill on behalf of the Colorado River District, the Colorado Water Congress, and the Mesa County Board of Commissioners. Senator Schwartz, the bill sponsor, introduced an amendment to eliminate future sunset reviews. Both the amendment and the Bill were passed by the Committee. On February 25, 2011 the Bill passed out of the Senate Appropriations Committee and was referred to the Senate as whole. Staff anticipates a House Agricultural Committee hearing sometime in March. (*Joe Busto*)

STREAM AND LAKE PROTECTION SECTION DE MINIMIS CASES: The following table summarizes the applications that have the potential to injure the Board's instream flow water rights, but their impacts are considered de minimis. In each of these cases, the cumulative impact to the Board's rights is 1% or less. Pursuant to ISF Rule 8(e) (the de minimis rule), staff has not filed Statements of Opposition in these cases and has provided the required notification to the Division Engineer and applicants. (*Don West*)

Case No.	Applicant	Stream/ Case Number	ISF Amount	Percent Injury	Cumulative % Injury	Previous Cases
4-10CW211	E R Homeowners Corporation	South Fork San Miguel River/ 4-84CW430	9 cfs (summer) 9 cfs (winter)	0.0161 % 0.0189 %	0.4276 % 0.1816 %	5
4-10CW211	E R Homeowners Corporation	San Miguel River/ 4- 84CW429	20 cfs (summer) 20 cfs (winter)	0.0072 % 0.0085 %	0.5183 % 0.3156 %	6
4-10CW211	E R Homeowners Corporation	San Miguel River/ 4-02CW277	93 cfs (summer) 61 cfs (winter)	0.0016 % 0.0028 %	0.0016 % 0.0028 %	0
6-10CW079	Rio Blanco Ranch Company	North Fork of White River/ 6- 78W3704	70 cfs (summer)	0.0043 %	0.0043 %	0

PRESENTATION ON DOMINGUEZ CANYON WILDERNESS AREA ISF WATER RIGHTS: On February 24, 2011, Linda Bassi gave a presentation at the American Bar Association Water Law Conference on the collaborative process that led to the CWCB appropriating instream flow water rights within the Dominguez Canyon Wilderness Area. The presentation was part of a panel discussion on "Water Rights in Parks, Wilderness Areas, and Tribal Lands." (*Linda Bassi*)

~ATTACHMENTS~

- 01 Finance Section - March Design & Construction Status Report
- 02 Instream Flow and Natural Lake Level Program – Summary of Resolved Cases
- 03 WRSA Pending Projects
- 04 WSRP In Progress Projects
- 05 WSRP Completed Projects
- 06 WSRP Balance February 2011
- 07 House Bill 10 – 1051 : Covered Entities' Water Efficiency Reporting
- 08 February 2011 Drought Update
- 09 CWCBA Financial Activity Report for Fiscal Year 2011
- 10 Letter Regarding City of Aspen Castle Creek Hydroelectric Project
- 11 Late Summer and Fall Reservoir Operation Statistics for 2010
- 12 Effect of Late Irrigation Season Reservoir Releases on Flow in the 15-Mile Reach

STATE OF COLORADO

Colorado Water Conservation Board

Department of Natural Resources

1313 Sherman Street, Room 721

Denver, Colorado 80203

Phone: (303) 866-3441

Fax: (303) 866-4474

www.cwcb.state.co.us



John W. Hickenlooper
Governor

Mike King
DNR Executive Director

Jennifer L. Gimbel
CWCB Director

TO: Colorado Water Conservation Board Members

FROM: Kirk Russell, P.E. Design & Construction Manager
Finance Section

DATE: March 4, 2011

SUBJECT: **Directors Report Attachment**
March 15/16 2011 Board Meeting
Finance Section – Design & Construction Status Report

The CWCB Finance Section has Substantially Completed two projects in 2011. Currently we have 47 projects in design and/or construction, involving over \$215,000,000 in loan funds

The attached spreadsheet summarizes project status, including budget, construction schedule, and progress to-date.

The attached progress report briefly outlines all active project design and construction information and progress to-date.

March 4, 2011

**Colorado Water Conservation Board
Water Project Loan Program
Project Design and Construction Status Report**

Applicant/Borrower	Project	County	Loan Amount	Size	Annual Delivery Yield (AF)	Storage Created (AF)	Design Status	Construction		
								Start	End	Status
Projects Substantially Completed in 2011										
1 Raymond Dairy, Incorporated	Robert Raymond Concrete Ditch Reconstruction	Mesa	\$ 63,950	2,500 LF	386		100%	Nov-09	Feb-11	2/1/2011
2 Bijou Irrigation District	Empire Reservoir Rehabilitation - Dam Rehab.	Morgan/Weld	\$ 2,408,850	19,900 AF	19,900	2,682	100%	Nov-07	Feb-11	3/1/2011
	Total =		\$ 2,472,800		20,286	2,682				
Current Projects in Design or under Construction										
1 Grand Mesa Reservoir Company	Grand Mesa Reservoir No. 1 & 9 Rehabilitation	Mesa	\$ 200,000	1,000 AF	1,000	200		Funds Reversed Back 11/2010		
2 New Cache La Poudre Irrigation Company	Construct 2 New Reservoirs and Pipeline	Weld	\$ 7,200,000	4,500 AF	4,500	4,500	100%	Jun-05	Jan-14	99%
3 Orphan Wells of Wiggin, LLC	Well Augmentation Project	Morgan	\$ 1,037,700	6,000 AF	6,000		100%	Nov-03	On-hold	99%
4 Mancos Water Conservancy District	Inlet and Outlet Canal Rehabilitation	Montezuma	\$ 5,486,531	15,840 LF	9,000		75%	Jan-04	Jan-14	70%
5 Upper Arkansas Water Conservancy District	Reservoir Rehabilitation	Chaffe/Custer	\$ 3,520,000	500 AF	500	200	100%	Jun-05	Jan-13	90%
6 Union Ditch Company	Well Augmentation Project	Weld	\$ 312,595	206 AF	206		75%	Sep-06	Jan-13	80%
7 Lower Poudre Augmentation Company	Reservoir and Water Rights Purchase	Larimer/Weld	\$ 3,104,053	657 AF	657		100%	Oct-07	Jan-13	99%
8 Bull Creek Reservoir Company	Reservoir Rehabilitation Project	Mesa	\$ 1,212,000	900AF	900	900	100%	Jul-08	Jan-12	99%
9 Overland Ditch and Reservoir Company	Overland Reservoir Rehabilitation	Delta	\$ 1,130,000	6,200 AF	17,000	971	95%	May-08	On-Hold	0%
10 Montezuma Valley Irrigation Company	May Lateral Pipeline	Montezuma	\$ 5,292,400	5 Miles	128,000		100%	Nov-07	Jan-12	99%
11 Platte Valley Irrigation Company	Equalizer Reservoir Project	Weld	\$ 2,388,650	431 AF	52,401	431	100%	Nov-10	May-11	5%
12 Greeley Irrigation Company	Greeley Canal No. 3 Rehabilitation	Wed	\$ 2,233,867	18,000 AF	18,000		90%	Feb-08	Jan-12	90%
13 Henrylyn Irrigation District	Horse Creek & Prospect Reservoir Rehabilitation	Weld	\$ 2,184,327	13,850 AF	13,850	3,000	95%	Nov-08	Jan-12	85%
14 New Salida Ditch Company	Ditch Rehabilitation	Chaffee	\$ 365,620	300 L.F.	7,000		100%	Oct-09	Jan-12	95%
15 Farmers Pawnee Canal Company	Ditch Flow Control Structures	Logan	\$ 227,250		27,260		100%	Oct-08	Jan-12	95%
16 North Sterling Irrigation District	North Sterling Reservoir Rehabilitation	Logan	\$ 1,094,840	74,590 AF	82,207		100%	Sep-09	Jul-11	99%
17 Republican River Water Conservation District	Compact Compliance Pipeline	NE. Colo	\$ 60,600,000	15,000 AF	15,000		100%	Nov-08	Jan-14	80%
18 Ogilvy Augmentation Company	Well Augmentation	Weld	\$ 1,010,808	60 AF	60		100%	Dec-08	Jan-12	95%
19 Boulder White Rock Ditch and Reservoir Company	Panama Reservoir Outlet Rehabilitation	Boulder/Weld	\$ 2,864,164	300 L.F.	12,000	2,600	100%	Oct-09	Jan-12	95%
20 Snowmass Water and Sanitation District	Zeigler Reservoir Water Management System	Pitkin	\$ 1,952,805	1,800 AF	1,800		100%	Feb-10	Feb-12	80%
21 Farmers Reservoir and Irrigation Company	Milton Reservoir and Barr Lake Improvement Proj.	Adams/Weld	\$ 3,535,000	64,900 AF	125,000		100%	Oct-09	Jan-12	70%
22 Lower Latham Reservoir Company	Well Augmentation Project	Weld	\$ 3,811,573	5,705 AF	5,705		100%	Nov-09	Jan-13	65%
23 WRCC, Inc.	Cobb Lake Inlet Structure Rehabilitation	Larimer	\$ 1,301,890	35,000 AF	35,000		100%	Sep-10	Jan-12	99%
24 Town of Gypsum	LEDE Ditch and Reservoir Rrehabilitation	Eagle	\$ 2,689,731	685 AF	1,200	254	60%	Jun-10	Jan-14	15%
25 Town of Dillon	Old Dillon Reservoir Enlargement	Summit	\$ 1,515,000	286 AF	321	140	100%	Sep-10	Jan-14	2%
26 Lake Canal Reservoir Company	South Gray Reservoir Rehabilitation/Gray No. 3	Larimer	\$ 393,900	1,120 AF	1,120	165	100%	Sep-10	Jan-12	30%
27 City of Monte Vista	Augmentation Water Rights Acquisition	Rio Grande	\$ 1,693,770	321 AF	1,212		90%	Oct-10	Jan-12	50%
28 Fort Morgan Reservoir and Irrigation Company	Pipeline Project - Augmentation Retiming	Morgan	\$ 1,494,800	15,840 L.F.	37,058		100%	Sep-10	May-11	99%
29 Joseph W. Bowles Reservoir Company	Bowls No. 1 Dam Rehabilitation	Jefferson	\$ 1,703,870	2,062 AF	900		100%	Aug-10	Dec-11	95%
30 Stagesop Owners Association	Water Augmentation Reservoirs Project	Park	\$ 192,708	20	20	20	100%	Sep-10	Jul-11	99%
31 Grand River Ditch Company	Grand River Ditch Pipeline	Garfield	\$ 543,380	14,500	14,500		100%	Sep-10	Jul-11	99%
32 Loudon Irrigating Canal and Reservoir Company	Rist Benson Reservoir Rehabilitation	Larimer	\$ 663,610	150AF	150	150	100%	Feb-11	Jul-11	0%
33 Pagosa Area Water and Sanitation District	Dry Gulch Reservoir Land Acquisition	Archuleta	\$ 11,217,060	35,000 AF	35,000	35,000	n/a	Nov-08	Mar-20	n/a
34 Supply Irrigating Ditch Company	Knoth Reservoir Dam Rehabilitation	Boulder	\$ 1,515,000	4,800 AF	4,800	400	95%	Jan-10	On-Hold	0%
35 Owl Creek Reservoir Company	Owl Creek Reservoir Rehabilitation	Weld	\$ 1,125,000	1200 AF	1,200	1,200	99%	Jul-10	On-Hold	0%
36 Southeastern CO Water Conserv. District	Arkansas Valley Conduit	Crowley	\$ 60,600,000	138 Miles	6,555		25%	Nov-10	On-Hold	0%
37 Penrose Water District	Water Rights Purchase and Pipeline Installation	Fremont	\$ 8,844,570	30,624 LF	339		65%	Oct-10	Jan-14	0%
38 Seven Lakes Reservoir Company	Railroad Crossing	Weld	\$ 772,842	7,796 AF	7,796		95%	In ReDesign		
39 Duel and Snyder Improvement Company	Diversion Structure Rehabilitation	Morgan	\$ 90,900	4,590 AF	4,590		25%	Sep-10	On-hold	0%
40 Farmers' High Line Canal and Reservoir Company	System Rehabilitation Project	Adams/Jefferson	\$ 1,410,768	31 Miles	24,000		25%	Feb-11	Feb-14	10%
41 Riverside Reservoir and Land Company	Riverside Reservoir Spillway Enlargement	Weld	\$ 2,838,100	64,000 AF	105,000		50%	Sep-10	Jan-13	0%
42 Riverside Ditch and Allen Extension Company	Ditch System Rehabilitation	Chaffee	\$ 186,345	3,250 LF	3,260		85%	Jul-10	Jan-12	50%
43 Parkville Water District	Canterbury Tunnel Repair	Lake	\$ 1,838,200	250 LF	1,086		75%	Oct-10	Jan-12	0%
44 Las Animas Consolidated Canal Company	Diversion Structure Rehabilitation	Bent	\$ 77,265	26,000 AF	26,000		30%	Oct-10	Jan-12	5%
45 Consolidated Extension Canal Company	Diversion Structure Rehabilitation	Bent	\$ 180,285	26,000 AF	26,000		100%	Oct-10	Jan-12	5%
46 Huerfano-Cucharas Irrigation Company	Cucharas Reservoir Rehabilitation	Pueblo	\$ 1,622,060	35,395 AF	3,000	7,500		Contracting		
47 South Metro Water Supply Authority	Raw Water Delivery - Capacity Purchase	Adams/Denver	\$ 5,090,400	10,750 AF	10,750			Contracting		
	SubTotal =		\$ 215,275,237		213,626					
	Grand Total =		\$ 217,748,037		233,912					
	Reservoir construction projects involving storage: new, enlargement, dredging or removal of a SEO restriction =					62,995				

Design & Construction Status Report

Projects Substantially Completed in 2011

1. Raymond Dairy, Incorporated – Concrete Ditch Reconstruction Project

Authorization: Construction Fund

Water Source: Grand Valley Canal

Terms of Loan: \$63,950@2.5% for 30 yrs.

County: Mesa

Project Yield: 386 AF

Project Type: Ditch Rehabilitation

Raymond Dairy is located just northwest of Fruita, Colorado and is owned by Robert and Helen Raymond. The Raymond Ditch has a capacity of 3.5 cfs and is used to carry irrigation water to 125 acres of field crops for dairy cattle. This Project involved rehabilitating 2,400 feet of the ditch, and installing new head gates. This Project will decrease ditch seepage; thereby improving the environment by reducing salt leaching into the Colorado River. NRCS provided planning and design engineering services for this work. The total project cost was \$95,000. NRCS provided 33% cost share in the Project. CWCB funding consisted of an initial loan for \$95,950 which was reduced to \$63,950 after construction was complete. The Project was substantially completed on February 1, 2011.

2. Bijou Irrigating District – Empire Reservoir Rehabilitation Project

Authorization: Severance Tax Fund

Water Source: South Platte River

Terms of Loan: \$4,454,100@2.25% for 30 yrs.

County: Morgan/Weld

Project Yield: 19,900 acre-feet

Project Type: Reservoir Rehabilitation

The District owns and operates Empire Reservoir located west of Fort Morgan in Weld and Morgan Counties. It is an off-stream reservoir primarily impounded by four separate dams constructed in about 1905. Water is diverted from the South Platte River through the Empire Intake Ditch. The water storage rights are 37,709 acre-feet and there is one refill right. The reservoir has been restricted by the SEO due to wind erosion problems along the east embankment. The Project consists of repairing failed sections of parapet walls, removing trees along the upstream toe of the dam, and adding additional riprap slope stabilization along the East Dike Embankment. This will allow the reservoir to be filled to its full gage height. The Project will result in 2,682 AF of recovered storage. Due to increased cost of fuel and materials the loan contract was increased from \$2.4M to \$4.5M at the November 2008 Board Meeting. The Project was substantially completed on March 1, 2011.

Projects in Design and/or under Construction

1. Grand Mesa Reservoir Company – Rehabilitation of Reservoir No. 1 and No. 9

Authorization: Construction Fund	County: Mesa
Water Source: Gunnison	Project Yield: 1,000 Acre-Feet
Terms of Loan: \$200,000@ 2.4% for 20-years	Project Type: Reservoir Rehabilitation

The ownership changed and the Company elected to do the repairs without CWCB loan funds. The contract will be voided and funds will be reversed back to CWCB in 2011. |

2. New Cache La Poudre Irrigation Company – Reservoir Construction

Authorization: Construction Fund	County: Weld
Water Source: South Platte	Project Yield: 4,500 acre-feet
Terms of Loan: \$7,200,000 @ 2.50% for 30-years	Project Type: New Reservoir

The New Cache La Poudre Irrigation Company currently provides irrigation water to a 35,000-acre service area. The purpose of this project is to provide water storage to equalize ditch flows, to improve efficiency and the reliability of the Company's system, and for providing additional storage to meet future demands. The project will involve the construction of 3 separate reservoirs near the Town of Barnesville, Colorado, totaling 4,500 acre-feet of storage. Additionally, 8,200 linear feet of pipeline will be installed in construction with the reservoirs. Smith Geotechnical, Fort Collins, Colorado is the project designer. The Barnesville Reservoir project was awarded to Barker Construction, Fort Collins, Colorado and has been completed. The pump station from Barnesville Reservoir to Cornish Reservoir has been completed as well. The design for Cornish Reservoir has been completed and has been awarded to Barker Construction, Fort Collins, Colorado for construction. The Contractor has completed the work and is waiting on final SEO approval. The Company requested that CWCB's cost participation be changed from 75% to 89% to allow the full \$7,200,000 of loan funds to be released, which was approved at the September 2007 Board Meeting. The project will remain open until the land purchased to construct Cornish Reservoir is paid off in 2021.

3. Orphan Wells of Wiggins – Augmentation Project (Will Be Substantially Complete in FY2011)

Authorization: Construction Fund	County: Morgan
Water Source: South Platte Basin	Project Yield: 6,000 acre-feet
Terms of Loan: \$1,037,700 @ 2.5% for 30-years	Project Type: Well Augmentation

The Orphan Wells of Wiggins is a new company comprised of 31 separate agricultural operators that own 45 wells which irrigated approximately 4,500 acres of farmland. This project involves the construction of 1 recharge well, 1 augmentation well, various pipeline, and 23 recharge ponds. The project will generate augmentation credits to cover the depletions for the 45 existing wells. The project is currently 90% complete. The project has changed from its original scope to include additional piping and recharge sites. Additionally, the Company has purchased several Riverside Ditch shares that will improve augmentation efforts. The Company was approved for an increase of \$200,000 at the November 2006 Board Meeting to complete the additional recharge sites and for the purchase of the Riverside Ditch shares. These funds have not been distributed. The Company elected to decline presenting its case in court last year, given strong objectors and the lack of senior water in its augmentation plan. Based on that decision the Company will not be able to operate and are currently in the process of dissolving the Company. CWCB is currently working with a few interested parties in purchasing the Company assets, which would be used to pay off or pay down the Company's existing debt with CWCB. Staff has met with the board members and they agreed to

substantially complete the project and put the project in repayment. They have requested that the interest that has accumulated be forgiven, which staff has denied given the precedent it would make and project history. Staff did meet with the Company's Board Members in March 2010. The Board is currently pursuing the sale of 10 shares of Riverside Ditch and the augmentation project itself to hopefully generate sufficient revenue to pay off their \$900K loan with CWCBC. There are a number of parties interested in purchasing Orphan Wells of Wiggins assets.

4. Mancos Water Conservancy District - Canal Rehabilitation

Authorization: Severance Tax Perpetual Account	County: Montezuma
Water Source: West Mancos River	Project Yield: 9,000 acre-feet
Terms of Loan: \$5,486,531 @2.80% for 30-years	Project Type: Canal Rehabilitation

The Mancos Water Conservancy District supplies irrigation and municipal water within a 13,496 acre service area. The District's carriage facility is over 50-years old and the U.S. Bureau of Reclamation has recommended rehabilitation of the inlet and outlet canals. The proposed project is to rehabilitate inlet and outlet canals to the Jackson Gulch Reservoir and to replace its operational shops and headquarters. The District's goal is to have the entire project completed by 2014. The District has performed test sections with various lining materials to assist in determining the final design package for the ditch rehabilitation. The District has been in the process of asking the Federal Appropriations Committee for \$6,200,000 in grant funds to assist in completing the project, which was approved in March of 2009. They received \$1.8M Federal appropriation for 2010. The overall project is scheduled for completion in January of 2014. The District did undertake the rehabilitation of the critical portion of their ditch system in the summer 2009, involving the construction of retaining walls and access road along the ditch. District bid the piping phase in summer 2010 with construction to be completed in winter 2010.

5. Upper Arkansas Water Conservancy District – N. Fork Reservoir Rehabilitation

Authorization: Severance Tax Fund	County: Chaffee/Custer/Fremont
Water Source: N. Fork of S. Arkansas	Project Yield: 500 acre-feet
Terms of Loan: \$3,520,000 @ 3.50% for 30 yrs.	Project Type: Reservoir Rehabilitation

The UAWCD has operated the North Fork Reservoir since 1979 for domestic, municipal, industrial, recreational, and augmentation water supply. The reservoir is at elevation 11,400 feet and is located approximately 10 miles from Maysville on the North Fork of the South Arkansas River. This project involves replacement of the outlet gate, improved access, increased spillway capacity, seepage control, and raising the dam 15-feet to achieve a storage capacity of 500 acre-feet. The project is located on Forest Service property, which required a special use permit and an environmental assessment prior to construction. The project was awarded to ASI, Buena Vista, Colorado, who commenced construction in August of 2006 and completed the work in May of 2007. The District will not be pursuing enlargement of the reservoir, due to issues associated with the Forest Service and the NEPA process. The District is currently working on remote monitoring equipment for North Fork Reservoir, and the NEPA process to continue operating at historic levels.

6. Union Ditch Company – Well Augmentation Project

Authorization: Severance Tax Trust Fund	County: Weld
Water Source: South Platte River	Project Yield: 206 acre-feet
Terms of Loan: \$312,595 @2.50% for 320-years	Project Type: Well Augmentation

The Union Ditch Company provides irrigation water to an area of 5,500 acres east of the Town of LaSalle

and south of Greeley. The Union Ditch Company has filed application for an augmentation plan to provide replacement water for 40 junior wells owned by the shareholders, formerly serviced by GASP. This project involves the development of 3 recharge ponds, placement of flow measurement devices, and headgate structures into the ponds. The ponds will be filled by gravity flow from the Union Ditch. Union Ditch Company is currently constructing one recharge pond at the Miller Feedlot Site with an accompany diversion structure on the Union Ditch.

7. Lower Poudre Augmentation Company – Reservoir and Water Rights Purchase

Authorization: Severance Tax Fund

Water Source: South Platte

Terms of Loan: \$3,104,053@2.50% for 30 yrs.

County: Larimer/Weld

Project Yield: 657 acre-feet

Project Type: Reservoir & Water Rights

The Lower Poudre Augmentation Company (LPAC) is a non-profit company that was incorporated in 2004, by the New Cache La Poudre Irrigating Company (2/3 interest) and the Cache La Poudre Reservoir Company (1/3 interest). There are 88 wells owned by 35 individuals/entities and the augmentation demands are approximately 3200 AF. The LPAC has filed for a permanent Augmentation Plan, and has operated on a Substitute Water Supply Plan for 3-4 years. LPAC proposes to purchase the Timnath Flatiron Reservoir, and 4.5 shares of Boxelder Ditch, and construct the necessary improvements to utilize the reservoir for augmentation purposes. The reservoir currently has a storage capacity of approximately 657 AF, with a depth of 12-15 feet. The reservoir area was mined for sand and gravel and lined with clay once mining was complete. The reservoir has received SEO certification as a lined gravel pit storage facility. The Company has purchased the reservoir and water rights and is currently constructing the reservoir improvements. Substantial completion is expected spring of 2011.

8. Bull Creek Reservoir Canal and Power Company – Reservoir Rehabilitation

Authorization: Severance Tax Fund

Water Source: Colorado River

Terms of Loan: \$1,212,000@ 2.5% for 30 yrs.

County: Mesa

Project Yield: 900 acre-feet

Project Type: Reservoir Rehabilitation

The Bull Creek Reservoir, Canal and Power Company is located in Mesa, Colorado, and has a service area of approximately 800 acres. The Company operates the Bull Creek Reservoirs that provide irrigation water to shareholders. The Project is a repair to remove the current restriction on Reservoir #4 and provide additional storage necessary to store the Company's decreed rights. The Company has a Stipulation and Agreement with the SEO that requires the Company to repair Reservoir No. 4 in order to avoid abandonment of a portion of the senior water rights. The Project is located on the US Forest Service property and will require a Special Use Permit for access roadway work and dam construction. The reservoir is remote and located at 10,000 feet elevation. The project was approved by the Board in 2006, but has been re-scoped to address SEO concerns and higher than previously anticipated construction costs. The Company received SEO approval in August of 2008. The contractor, Geer-up-Construction, completed the outlet works, seepage control, and 75% of the dam embankment reconstruction. Work was suspended in October of 2008 due to weather. The contractor negotiated a new contract with the Company to finish the remaining work in the summer of 2009. The Company elected to release the original engineering firm and hired Vista Engineer, Grand Junction, Colorado to finish the project. Geer-up-Construction mobilized in July of 2009 and was failed to complete the project by winter. The remaining items (spillway cutoff wall and rip rap, minor rip rap placement along the upper dam face, monitoring devices, final grading of the dam crest, re-vegetation, and cleanup) were completed in the summer of 2010 by Sorter Construction. The project construction is now 100% complete. The Company is currently addressing a court claim filed by Geer-Up Construction. The Company received approval of additional funding at the November 2010 CWCB Meeting.

9. Overland Ditch and Reservoir Company – Reservoir Rehabilitation

Authorization: Severance Tax Fund

County: Delta

Water Source: Cow Creek

Project Yield: 17,000 AF

Terms of Loan: \$1,130,000@ 2.5% for 30 yrs.

Project Type: Reservoir Rehabilitation

The Overland Ditch and Reservoir Company's 120 members own and operate the Overland Reservoir, located in Delta County in the Gunnison National Forest at elevation 10,000-ft. This project involves increasing the current reservoir capacity from 6,200 AF to 7,171 AF, raising the spillway elevation 3.8 feet, installing toe drains, increasing the dam crest width, and additional embankment protection. The Overland Ditch Company shareholders at their August 2006 Board Meeting, approved increasing the capacity of the reservoir. The project is currently under design, with construction on-hold until fens can be addressed on-site. High altitude fens on the Grand Mesa have become a significant issue and staff is currently working with area water users, local wetland consultants, and the Army Corps of Engineers to address this problem on a regional permit basis.

10. Montezuma Valley Irrigation Company – May Lateral Pipeline

Authorization: Severance Tax Fund

County: Montezuma

Water Source: Dolores River

Project Yield: 128,000 acre-feet

Terms of Loan: \$5,292,400@2.25% for 30 yrs.

Project Type: Pipeline

The Montezuma Valley Irrigation Company is a non-profit corporation established in the State of Colorado in 1920. The Company manages the delivery of irrigation water to the approximately 46,000 acre service area. The Company is proposing to install approximately five (5) miles of 36-inch pipe in the existing May Lateral Ditch alignment. The installation of pipe will improve delivery and significantly reduce leakage. The May Lateral water is diverted from the Dolores River and is routed through the McPhee Reservoir prior to delivery to shareholders. The new pipeline will carry approximately 18 cfs to the 105 shareholders that depend on the May Lateral for irrigation water. AgriTech Consulting has provided planning and preliminary design services. The Company has completed the installation of the entire pipe along the 5-mile project length. Substantial Completion is expected in by mid 2011.

11. Platte Valley Irrigation Company – New Equalizer Reservoir Project

Authorization: Severance Tax Fund

County: Weld

Water Source: South Platte River

Project Yield: 52,401 AF

Terms of Loan: \$2,388,650@2.25% for 20 yrs.

Project Type: Reservoir Construction

PVIC is a Colorado mutual ditch company and non-profit corporation serving approximately 14,832 acres of irrigated farm land in Weld County east of Platteville. PVIC diverts water for irrigation from the South Platte River near Fort Lupton and shares a jointly owned headgate with Farmers Reservoir and Irrigation Company (FRICO), as well as about 10 miles of the jointly owned Platte Valley Canal. Average annual diversions are 52,401 acre-feet. PVIC needs an equalizer on the ditch to allow for more efficient management of the water, as well as additional measurement and control structures on their main ditch. The reservoir will have a junior water right for storage of water directed to PVIC's recharge program. In an average year the reservoir is expected to store 300 acre feet, with a 300 acre feet refill. Construction will consist of a 431 acre-foot reservoir with a 14 foot high dam embankment with 10:1 upstream slopes and 3:1 downstream slopes. The reservoir bottom will be lined using clay from the required excavation as necessary to exclude groundwater. The outlet will be a 48 inch RCP, configured to act as the principal spillway. The project also includes relocation of an existing section of Evans No. 2 Ditch below the split

from the Platte Valley Canal, modification of the existing bifurcation structure, and construction of three (3) new Parshall Flumes in various reaches of the ditch, as directed by the Water Court. The project is being designed by Smith Geotechnical, Fort Collins, with construction anticipated to commence in July/August 2010.

12. Greeley Irrigation Company – Greeley No. 3 Canal Rehabilitation

Authorization: Severance Tax Fund

Water Source: South Platte

Terms of Loan: \$2,233,867@2.85% for 30 yrs.

County: Weld

Project Yield: 18,000 acre-feet

Project Type: Canal Rehabilitation

The Greeley Irrigation Company (GIC) provides irrigation water to a service area of 2,367 acres in Weld County, generally within the City of Greeley and east of the City. GIC operates the Greeley Canal No. 3, constructed in 1870 by the Union Colony. About 1,100 acres of the 3,500 original irrigated acres have been subject to dry-up, and water converted to augmentation use. Present canal usage is roughly 1/3 City of Greeley, 1/3 agricultural irrigation, and 1/3 augmentation. GIC facilities consist of a river diversion structure, approximately 13 miles of earthen canal, check structures, delivery headgates, spill structures, trash screens, and other minor structures. A portion of these facilities are in need of repair, upgrades, or replacement. The GIC Board is undertaking a number of phased improvements to the canal including: 1) repairs to, and partial replacement of, the river diversion; 2) piping or lining of portions of the canal; 3) consideration of canal automation using supervisory control and data acquisition (SCADA) equipment; 4) tree removal and tree pruning; 5) canal realignment, reshaping, and straightening; and 6) removal or repair of selected headgates and installation of new headgates. The project is nearly complete. The Company is currently working on their SCADA system and the realignment and reshaping of various sections of existing channel.

13. Henrylynn Irrigation District – Horse/Prospect Reservoirs Rehabilitation

Authorization: Severance Tax Fund

Water Source: Denver/Hudson Canal

Terms of Loan: \$2,184,327@2.25% for 30 yrs.

County: Weld

Project Yield: 13,850 acre-feet

Project Type: Reservoir Rehab.

The HID was formed in 1907 Irrigation District Law of 1905, and consists of 32,745 acres of irrigated farm land in Weld County. The HID diverts water through the Burlington Canal Headworks on the South Platte River, extending 16 miles to and past Barr Lake. From Barr Lake the Denver-Hudson Canal continues 25 miles to Horse Creek Reservoir, and then continues another 25 miles to Prospect Reservoir. Horse Creek Reservoir was constructed in 1910, and is a High Hazard, Class 1 earth fill dam, with a dam height of 64 feet, a length of 4800 lineal feet, and a crest width of 16 feet. There is a 200 foot wide earth-lined spillway. The decreed storage right is 19,515 AF, but normal storage is 18,747 acre feet. The outlet works consist of 3 x 48" diameter steel conduits. The proposed project will provide a lining for the outlet works, install additional toe drainage, and resurface and re-grade the dam crest. Prospect Reservoir was constructed in 1914, and is a Significant Hazard, Class 2 earth dam, with a dam height of 43.5 feet, a length of 5,301 lineal feet, and a crest width of 20 feet. There is a 250 wide concrete and riprap spillway. The decreed storage right is for 7,660 AF, but the normal storage is 6,368 acre feet. The outlet works consist of a 48" concrete pipe that narrows to about 30" downstream of the control gate, due to previous re-lining projects. The reservoir is currently restricted to 1.5 feet below the historic maximum stage, due to concerns about the stability of the downstream slope of the dam. The proposed project will provide a lining for the outlet works, and resurface and re-grade the dam crest. Zak Dirt Construction has completed reconstruction of outlet channel and has regraded the dam crest on Horse Creek Reservoir. On Prospect reservoir the outlet pipe has been lined and regrading of the dam crest is complete. The

Company is also evaluating the possible need to replace the existing gates at Prospect Reservoir and regarding of the dam face.

14. New Salida Ditch Company – Ditch Rehabilitation

Authorization: Severance Tax Fund
Water Source: Upper Arkansas River
Terms of Loan: \$365,620@2.50% for 30 yrs.

County: Chaffee
Project Yield: 7,000 acre-feet
Project Type: Ditch Rehabilitation

The New Salida Ditch Company owns and operates the New Salida Ditch to deliver water to agricultural users from the Arkansas River through a diversion in Browns Canyon. The diversion is located 10 miles north of Salida and is approximately eight miles from its diversion to its end at Ute Gulch. In Browns Canyon, the Ditch runs parallel to the River for 1.25 miles. This section has historically been difficult for the Company to maintain and has suffered frequent breaks, resulting in costly repairs and the discharge of sediment into the adjacent river. The Company was cited by the Colorado Department of Health and Environment for a recent failure of the ditch in 2005. This project involves the installation of 3,200 feet of 42-inch pipe along the historically troubled ditch area. Project construction commenced in September of 2009 and should be completed in early 2011.

15. Farmers Pawnee Canal Company – Ditch Flow Control Structures

Authorization: Severance Tax Fund
Water Source: South Platte River
Terms of Loan: \$227,250@2.5% for 30 yrs.

County: Logan
Project Yield: 27,260 acre-feet
Project Type: Diversion Rehabilitation

The Farmers Pawnee Canal Company (Company) provides irrigation water to approximately 10,000 acres of land between Merino and Sterling, Colorado. It uses two separate structures to control flow in the Pawnee Ditch (Ditch). The first is a main diversion at the South Platte River. The second is a few miles down the Ditch and is used to adjust flow. The main diversion is a concrete rollover wall with vents to allow flushing of sand when opened. The secondary structure is currently controlled through the use of board style gates. Both structures are labor intensive and require monthly maintenance. To help with efficiency, the Company plans on replacing a portion of the main diversion with a new 12-foot radial gate. It also plans on replacing the board gates at the secondary structure with four 8-foot wide radial gates. Ransome Boone Excavating, Fort Morgan, Colorado has completed the ditch control structure. The Company recently completed improvements to their diversion structure and will look at automating the gate with a loan increase request in March 2011.

16. North Sterling Irrigation District – North Sterling Reservoir Rehabilitation

Authorization: Construction Fund
Water Source: South Platte River
Terms of Loan: \$1,094,840@2.25% for 20 yrs.

County: Logan
Project Yield: 74,590 acre-feet
Project Type: Reservoir Rehabilitation

The District owns and operates the North Sterling Reservoir (Reservoir) located in Logan County and provides stored and direct flow water to landowners within the District's 40,917 acre service area. The District service area begins just east of the North Sterling Reservoir approximately 15 miles northwest of Sterling, Colorado and extends east to just northeast of Crook, Colorado. The Reservoir faces the possibility of a storage restriction from the State Engineer's Office without the construction improvements to the current spillway and the dam. In order to retain full storage capacity, the District intends to enlarge the existing spillway, raise the dam crest, and install a seepage collection system at the Reservoir.

Construction commenced in September of 2009 and was completed by September 2010. Substantial Competition is scheduled for June 1, 2011

17. Republican River Water Conservation District – Compact Compliance Pipeline

Authorization: Severance Tax Fund	County: N. E. Colorado
Water Source: Republican River	Project Yield: 15,000 acre-feet
Terms of Loan: \$60,600,000@2.0% for 20 yrs.	Project Type: Pipeline Construction

December 2002, Colorado entered into a Stipulation with Kansas and Nebraska to address the U.S. Supreme Court case of *Kansas v. Nebraska and Colorado*. Colorado agreed to develop a ground water model to determine stream flow depletions caused by well pumping in the Basin and to a five-year running average to determine compliance with the Republican River Compact. In 2007, the State had exceeded its allocation under the Compact by an average of 11,350 AF/yr. To solve the problem the District elected to acquire ground water rights with a historical consumptive of 15,000 AF/yr. This water will be delivered to the North Fork of the Republican River via a Compact Compliance Pipeline to the stream gage at the Colorado-Nebraska state line to offset stream depletions. The District is requesting a loan from the CWCB in the amount of \$60 million to finance the engineering, construction and water acquisition related to the Pipeline Project. The loan represents approximately 85% of the estimated \$71 million total cost of the Project. Final design is expected to start in the spring of 2008 and construction is scheduled for 2009 & 2010. The District has completed the design and bid packet for the project. Prior to construction and the disbursement of any additional CWCB loan funds, however, the District will need to resolve compact issues with Kansas regarding the recent concern over the proposed point of release of compact water on the North Fork of the Republican, which does not address the depletions on the South Fork of the Republican at the Colorado-Kansas state line and other related issues. The Republican River WCD did recently address issues of senior surface water users along the North Fork by the purchase of a 20-year lease from Yuma County Water Authority, who recently purchased the North Fork Water Rights under a separate CWCB loan contract. The District has completed the design plans and construction documents for the project. On June 19, 2009, utilizing CWCB loan funds, the District successfully closed the \$49,000,000 Cure water purchase, which was a critical piece to the overall success of the compliance project. The State is currently in arbitration with Kansas on and Nebraska over its compact compliance, which will dictate the future of the compliance pipeline project. UPDATE – In December 2010, the District elected to begin pipeline construction with an anticipated completion by mid 2013.

18. Ogilvy Augmentation Company – Well Augmentation Project

Authorization: Severance Tax Fund	County: Weld
Water Source: South Platte River	Project Yield: 60 acre-feet
Terms of Loan: \$1,010,808@2.5% for 30 yrs.	Project Type: Augmentation

The Ogilvy Augmentation Company (Augmentation Company) was established in 2005 to augment wells that operate under the Ogilvy Irrigating and Land Company service area. Approximately 1,400 acres of land are irrigated by the Augmentation Company members in an area north of Kersey, Colorado. There are 17 wells in the Augmentation Company that operate under its temporary substitute water supply plan (SWSP). The SWSP is currently operated using leased water. A permanent water supply is necessary for the Augmentation Company to obtain a permanent augmentation plan. Funds are being requested from the CWCB to: purchase water rights, construct a recharge facility, construct a storage reservoir, and install monitoring devices. The Augmentation Company intends to purchase the water rights upon the approval of the CWCB funding and construct the recharge facility in fall/winter of 2008. It will file for its permanent augmentation plan in 2009. Once the permanent augmentation plan is approved, construction will begin on the storage reservoir. The Company has purchased the water rights and has constructed the

recharge facility. The Company is waiting on approval of their augmentation plan before proceeding with the construction of the reservoir.

19. Boulder White Rock Ditch and Reservoir Company – Reservoir Rehabilitation

Authorization: Severance Tax Fund

Water Source: South Platte River

Terms of Loan: \$2,864,164@3.45% for 30 yrs.

County: Boulder/Weld

Project Yield: 12,000 acre-feet

Project Type: Reservoir Rehabilitation

The Boulder White Rock Ditch and Reservoir Company (Company) delivers irrigation water to land in Boulder and Weld Counties. It diverts water from Boulder Creek in downtown Boulder through the Boulder White Rock Ditch and stores water in two of its facilities: Six Mile Reservoir and Panama Reservoir. Due to recent operational changes, the Company no longer exchanges water with nearby ditches and needs to improve the flexibility in its own system to meet its shareholder's needs. The Company intends to build a reservoir pump station at the Panama Reservoir outlet in order to use water stored in the reservoir that is unable to be accessed through the existing gravity outlet. The Company was approved for a loan increase in the amount of \$434,000. The project commenced construction in December of 2009 and is nearly complete.

20. Snowmass Water and Sanitation District – Zeigler Reservoir Water Management System

Authorization: Construction Fund

Water Source: Snowmass Creek

Terms of Loan: \$1,952,805@4.25% for 20 yrs.

County: Pitkin

Project Yield: 1,800 acre-feet

Project Type: System Improvements

The District's project involves the constructing of a new delivery system; which includes the construction of a pump house, approximately 1,400 ft of pipe, construction of a flow control building, installation of telemetry and electric power. The District diverts water for treatment from East Snowmass Creek and East Snowmass Creek Spring, Brush Creek and Snowmass Creek. The District presently does not have a useable raw water storage facility, but purchased Ziegler Reservoir (aka Lake Deborah) in 2008 for the express purpose of improving system reliability by expanding the reservoir from its current 57 AF to approximately 225 AF. The District currently serves approximately 3,500 full time residents and during the winter ski season an additional 10,000 to 12,000 residents. To regulate flows and provide a supply during times of diminished stream flows, a system to divert water to and pump water from the reservoir is required. This Project will help the District to deliver water to utilize Ziegler reservoir as well as serve for the planned expansion of the reservoir. Construction is nearly complete.

21. Farmers Reservoir and Irrigation Company – Milton Reservoir and Barr Lake Improvements

Authorization: Construction Fund

Water Source: Beebe Seep Canal/Platte Valley Canal

Terms of Loan: \$3,535,000@3.7% for 30 yrs.

County: Adams/Weld

Project Yield: 125,000 AF

Project Type: Spillway

Farmers Reservoir and Irrigation Company operates a ditch and reservoir system extending 3,500 square miles along the Front Range corridor, from Golden to Kersey, Colorado. The system consists of four major reservoirs (Standley Lake, Marshall Lake, Barr Lake and Milton Reservoir) numerous smaller reservoirs, and approximately 400 miles of diversion and delivery canals. This loan request specifically relates to work to be completed at Milton Reservoir and Barr Lake. The Company intends to complete the following three projects: Milton Reservoir Outlet Works (replacing the upstream outlet gate structure and a portion of the piped outlet works), Milton Spillway (enlarging the existing spillway), and Barr Lake

Spillway (enlarging the existing spillway and raising the perimeter dike). These projects have been submitted to the SEO for review and have been approved. The Company commenced improvements on Milton Reservoir in October of 2009, which are approximately 95% complete. Barr Lake improvements started in October of 2010. UPDATE – the Project is near complete Substantial Completion is expected around mid/late 2011.

22. Lower Latham Reservoir Company – Well Augmentation Project – Phase III

Authorization: Construction Fund	County: Weld
Water Source: South Platte River	Project Yield: 5,705 acre-feet
Terms of Loan: \$3,811,573@2.75% for 30 yrs.	Project Type: Augmentation

The Lower Latham Reservoir Company (Company) is acquiring five shares of Lower Latham Ditch Company, for the purpose of providing augmentation water for existing shareholder wells. It is also constructing groundwater recharge facilities and other system improvements to utilize these shares and shares acquired in phases I & II of the project (both of which were financed by the CWCB). The Company provides augmentation water for 84 wells in Weld County by replacing out-of-priority pumping depletions. 39 of these wells were formerly in the GASP Augmentation Plan, and the remaining 45 wells are covered in the Augmentation Plan of Central Colorado Water Conservancy District's GMS. The Company is attempting to cover the former GASP wells, and supplement coverage of the GMS wells with their own augmentation plan. In 2003, the Company filed a permanent well augmentation plan that is pending. The Company has concluded that additional replacement sources are necessary to provide sufficient replacement water during extended drought years. A 2010 SWSP for the Company was revised and submitted to the SEO in December 2009. To-date the Company has been reimbursed for its water rights purchase and they are currently finalizing the construction of the augmentation ponds.

23. WRCC, Inc. – Cobb Lake Inlet Structure Rehabilitation

Authorization: Construction Fund	County: Larimer/Weld
Water Source: Cach La Poudre	Project Yield: 35,000 AF
Terms of Loan: \$1,301,890@2.85% for 30 yrs.	Project Type: Reservoir Rehabilitation

WRCC, Inc. (Company) owns and operates six storage reservoirs in Larimer and Weld Counties including Cobb Lake (Reservoir). The inlet ditch to the Reservoir has been badly eroded over time and vertical degradation has resulted in very steep ditch side slopes that are a safety concern. The inlet structures were built in the early 1900s and have been patched over the years; however, they are to the point where they could be subject to sudden catastrophic failure. If this inlet failed, the Reservoir could not be filled. The Company intends to reconstruct the existing inlet structures ditch to address both the safety and possible failure issues. Construction is was complete in November 2010 however additional work is necessary to protect channel from additional erosion. Additional CWCB funding requested in January 2011.

24. Town of Gypsum – LEDE Ditch and Reservoir Rehabilitation

Authorization: Construction Fund	County: Eagle
Water Source: Colorado River	Project Yield: 685 acre-feet (254 new)
Terms of Loan: \$2,689,731@4.5% for 30 yrs.	Project Type: Reservoir Rehabilitation

The Town purchased the LEDE Ditch and LEDE Reservoir water rights in 2006. The original water rights are decreed for irrigation uses, and provide storage for up to 947 AF in the reservoir. The Reservoir was built to a capacity of 431 AF. The Town seeks to increase capacity to 685 AF in order to accommodate

continued agricultural irrigation, and for future water supplies to the Town. This upstream storage is required to assist in managing Gypsum Creek water rights calls and dry year operations. The reservoir storage will become even more important as the Town's population continues to increase. The Town wishes to repair and improve the reservoir to utilize its potential, and to protect valuable senior storage rights in the reservoir. The reservoir is located in the headwaters of Gypsum Creek, south of Gypsum within the White River National Forest. Dam design and permitting is expected to occur in 2010/2011. The Town received a WSRA grant for additional enlargement of the reservoir. The pipeline construction was completed in September 2010.

25. Town of Dillon – Old Dillon Reservoir Enlargement

Authorization: Construction Fund	County: Summit
Water Source: Salt Lick Gulch	Project Yield: 286 acre-feet (140 new)
Terms of Loan: \$1,515,000@4.0% for 30 yrs.	Project Type: Reservoir Enlargement

The Town of Dillon is applying for a loan to participate in the enlargement of the Old Dillon Reservoir. In 2004, the Town, Summit County and Town of Silverthorne signed an agreement to enlarge the reservoir. The Town's participation cost is approximately 27% of the construction costs and 20% of the Engineering costs. The Town and the County initiated a feasibility study in 1995. The Reservoir was originally constructed as a 46 AF raw water storage reservoir filled via the Dillon Ditch, which diverts from Salt Lick Gulch. The Reservoir site is southwest of the Dillon Reservoir Dam. In the summer of 2008, the SEO issued an order to drain the Reservoir due to concerns over the integrity of the north dam. The Reservoir is currently not available for storage. The project will increase the reservoir capacity from 46 to 286 acre-feet. Permitting and design have been completed and a contractor has been selected. Construction is expected in 2011/12.

26. Lake Canal Reservoir Company – South Gray and Gray No. 3 Reservoir Rehabilitation

Authorization: Construction Fund	County: Larimer/Weld
Water Source: Box Elder Creek	Project Yield: 1,120 AF (165 AF new)
Terms of Loan: \$433,000@3.15% for 30 yrs.	Project Type: Reservoir Rehabilitation

The Lake Canal Reservoir Company is requesting a CWCB loan for reservoir improvements that include: 1) the installation of toe drains on the South Gray dam 2) the breaching of Gray No. 3 dam including erosion protection and access road realignment. The Project is necessary to address a SEO Dam Safety hazard and avoid the potential for a reservoir storage restriction. The South Gray Reservoir dam has excessive seepage along a major portion of the dam. The Reservoir Company desires to preserve the storage right on this reservoir and is interested in adding a toe drain or other seepage measures to ensure the safety of the dam. Gray Reservoir No. 3 is restricted to zero storage by the SEO due to the poor condition of the dam and outlet works. The Reservoir Company has received a court decree allowing the storage to be moved to other locations. Contractor has been selected and work will begin in November 2010.

27. City of Monte Vista – Augmentation Water Rights Purchase

Authorization: Construction Fund	County: Rio Grande
Water Source: Rio Grande River	Project Yield: 321 AF
Terms of Loan: \$1,693,770@4.0% for 30 yrs.	Project Type: Water Rights

The City of Monte Vista, by and through its water activity enterprise, provides water to 4,300 residents in the San Luis Valley. The City's water system consists of five wells in a confined aquifer and three wells in an unconfined aquifer. Upcoming rules from the Office of the State Engineer will require water users in the San Luis Valley to replace depletions from pumping of wells in both the confined and unconfined aquifers tributary to the Rio Grande River. The water rights currently owned by the City are insufficient to fully replace the City's depletions. The City needs an additional 321 AF of replacement water. In order to meet this need, the City is purchasing Anderson Ditch water rights and storage in the Rio Grande Reservoir to store both the excess credits from the water it is purchasing and to store additional water it intends on leasing. The City executed the purchase of the Anderson Ditch rights and will soon file a water court application to enable the use of those rights to replace depletions as soon as possible. The Town has executed an agreement with the San Luis Valley Irrigation District for the purchase of storage space in the Rio Grande Reservoir. CWCBC has disbursed funds for part of the water purchase and the Reservoir storage space.

28. Fort Morgan Reservoir and Irrigation Company – Pipeline Project/Augmentation Retiming

Authorization: Construction Fund

Water Source: South Platte River

Terms of Loan: \$1,494,800@2.9% for 30 yrs.

County: Morgan

Project Yield: 37,058 AF

Project Type: Augmentation/Pipeline

The Company operates a ditch system that serves surface water to approximately 15,000 acres of irrigated land between Weldona and Brush, and operates a recharge and augmentation plan that provides augmentation water for approximately 90 irrigation wells. In addition, the Company has an operational agreement with Groves Farms, LLC, which is a family farming corporation also located in Morgan County, for a recharge/augmentation plan. The Company, with Groves Farms, has designed a plan to re-divert and re-time augmentation credits from the Company's more senior recharge projects at certain times when they are not needed for direct augmentation use, and to divert water under new junior water rights when available for recharge and augmentation use. The Project involves installing one 24" pipe from the River extending three miles to recharge ponds on Groves Farms' land; installing two pumps to pump water from the River through the pipeline; installing one augmentation well and pumping equipment near Groves' ponds to pump ground water back to the South Platte River; and installing seven recharge /augmentation ponds on Groves Farms' land. Project construction is underway and scheduled for completion in the spring of 2011.

29. Joseph W. Bowles Reservoir Company – Bowles No. 1 Dam Rehabilitation

Authorization: Construction Fund

Water Source: Bear Creek

Terms of Loan: \$1,703,870@4.65% for 30 yrs.

County: Jefferson

Project Yield: 2,062 acre-feet

Project Type: Reservoir Rehabilitation

The Joseph W. Bowles Reservoir Company (Company) owns and operates Bowles No. 1 Reservoir, located in the southwest metropolitan area of Denver. The Company was formed in 1906 and currently has 50 shareholders who use the water for golf courses, parks, open space, and some individual ranches for irrigation water. The Company is applying for a loan to implement several repairs to correct dam-safety deficiencies and improve the long-term performance of Bowles No. 1 Dam and to rehabilitate the deteriorating reservoir inlet ditch. The dam rehabilitation includes widening the crest, reconstructing the upstream slope, and installing a seepage collection and toe drain system on the downstream slope. Work on the inlet ditch includes removing trees, reconstructing the ditch cross section and alignment, placing slope protection in high erosion areas, and installing a flow control pipe that will provide for discharge of excessive ditch flows into an existing spillway and drainage structure. Dam construction project completion expected by Spring 2011. Ditch construction is expected to continue thru 2011.

30. Stagestop Owners Association – Water Augmentation Reservoirs Project

Authorization: Construction Fund	County: Park
Water Source: Old House Creek/ Tarryall River	Project Yield: 20AF
Terms of Loan: \$192,708@2.25% for 20 yrs.	Project Type: Dam Rehabilitation

The Stagestop Owners Association represents property owners in the Stagestop subdivision, located near Jefferson, Colorado. The Association was incorporated in 1976 and is made up of 500 single-family residential lots. Individual wells supply water to each lot in the Association. There are 199 active wells at this time. Groundwater depletions from these wells are offset by an augmentation decree that includes storage and releases of water from Old House Creek. The water is stored in two reservoirs referred to as the Upper Reservoir and Lower Reservoir. Both reservoirs need outlet work repair. The Upper Reservoir is under a fill restriction by the Office of the State Engineer. Through this project the Association plans on replacing the existing outlet pipes at both reservoirs, installing new outlet structures and valves, and reconstructing the existing spillways. Construction is completed and Substantial Completion is scheduled for April 1, 2011.

31. Grand River Ditch Company – Grand River Ditch Pipeline

Authorization: Construction Fund	County: Garfield
Water Source: Colorado River	Project Yield: 14,500 AF
Terms of Loan: \$543,380@4.20% for 30 yrs.	Project Type: Ditch Rehabilitation

The Grand River Ditch Company operates the Grand River Ditch by providing direct flow irrigation water from the Colorado River. The ditch is 14 miles long and runs on the north side of the river from three miles west of New Castle to about a mile east of Rifle. In the spring of 2010, a retaining wall that protects the ditch from the river collapsed. The Company plans to repair the ditch by piping the damaged section, and by installing riprap and rock jetties in the river. Construction is expected to begin October 2010. NRCS has provided design engineering services for the Project. The Company has been approved for a \$100,000 grant from the USDA Farm Service Agency Emergency Conservation Program for this Project along with a \$20,000 WSRA Basin Grant. CWCB loan funding will allow for an initial loan for 100% of construction costs which will be reduced by the grant dollars received. The remaining balance will become a 30-year CWCB Loan. Construction has begun and is expected to be complete by the spring of 2011.

32. Loudon Irrigating Canal and Reservoir Company – Rist Benson Reservoir Rehabilitation

Authorization: Severance Tax Fund	County: Larimer
Water Source: Big Thompson River	Project Yield: 150 acre-feet
Terms of Loan: \$263,610@3.5% for 30 yrs.	Project Type: Reservoir Rehabilitation

The Company owns and operates the Rist Benson Reservoir, which is on the west side of Loveland, Colorado. Since 2005, the Reservoir has been restricted to a gauge height of 10.0 feet due to seepage problems along the dam. The Borrower has repaired two sections of the embankment in previous years. This Project is the third phase of repairs and once completed will increase storage by 150 AF allowing for full storage of 491 AF. The rehabilitation involves excavating and re-compacting sections of the embankment, installation of a toe drain, and installing riprap on the upstream face of the dam. Construction is expected to begin in February 2011 with completion by spring 2011.

33. Pagosa Area Water and Sanitation District – Dry Gulch Reservoir Land Acquisition

Authorization: Construction Fund
 Water Source: San Juan River
 Terms of Loan: \$11,217,060@3.50% for 30 yrs.

County: Archuleta
 Project Yield: 35,000 acre-feet
 Project Type: Land Acquisition

District serves 9,500 residents in the 100 sq. mile District service area. Drought and demand from growth is requiring additional storage and of around 12,400 AF of storage by 2040. Growth projections estimate the need for a 35,000 AF reservoir to meet demand through 2100. Dry Gulch site is the only reasonably valued site available due to land development. Primary fill source will be pumping of San Juan River water to the reservoir. A CWCB loan will be used to purchase two parcels of land to begin the process of meeting the needs of the District. The land is needed for both sizes of reservoir. Preliminary design and permitting is expected to start in 2008 and construction of the reservoir is projected to start in 2020. CWCB has disbursed just under \$10,000,000 in loan funds for land purchases to-date.

34 Supply Irrigation Ditch Company – Knoth Reservoir Dam Rehabilitation

Authorization: Severance Tax Fund
 Water Source: St. Vrain Creek
 Terms of Loan: \$1,515,000@2.6% for 30-years

County: Boulder – N.E. of Lyons
 Project Yield: 4,800 acre-feet
 Project Type: Dam Rehabilitation

Supply Irrigating Ditch Company services approximately 8,500 acres of irrigated farmland in Boulder County between Lyons and Mead. Currently the water for irrigation is supplied by a direct flow decree and from the Beaver Park Reservoir (which is approx. 25 miles west of the start of the Supply Ditch near the continental divide). Supply Irrigating Ditch Company is in the process of acquiring a storage decree within Knouth Reservoir in exchange for the rehabilitation of the reservoir. This reservoir will give the Company some system flexibility, as this storage is significantly closer to users than Beaver Park Reservoir. The reservoir improvements include: construction of a spillway, removing vegetation from the embankment of the dam, lining select areas on the upstream dam face with a clay liner, placing riprap along the upstream dam face, enclosing an irrigation ditch within a pipe, and installing dam instrumentation. URS Corporation is currently working on the final SEO plans, which could be approved sometime this summer. Design changes and refinement of the original cost estimate have resulted in an increase to the overall project cost. The Company was approved for additional loan funds at the November 2009, for a new loan amount of \$1,515,000. The Company was recently informed by Little Thompson Water District that they will not be participating in the project, given the cost per acre-foot to complete the project. The Company is currently evaluating its options to continue with the project.

35 Owl Creek Reservoir Company - Reservoir Rehabilitation

Authorization: Construction Fund
 Water Source: Owl Creek Basin
 Terms of Loan: \$1,125,000 @2.75% for 30-years

County: Weld
 Project Yield: 1,200 acre-feet
 Project Type: Reservoir Rehabilitation

Owl Creek Reservoir is located approximately 6 miles east and 3 miles north of the Town of Ault. The reservoir was originally constructed in 1896 to store water for irrigation. The dam was constructed of granular material, and over the years has suffered structural damage due to seepage. Given the condition of the dam embankment and the potential for failure, the dam was intentionally breached in 1983. The proposed project involves rehabilitating the existing dam embankment, the construction of a controlled outlet structure, and the construction of an emergency spillway. The project was bid in the fall of 2003. The Reservoir Company is currently exploring its options increasing the dredging quantity to obtain its full storage decree of 1,750 acre-feet. The Company is considering applying for additional funds from

the Board to achieve the full reservoir capacity. Additionally, the Company has amended the loan contract for a 1-year time extension to complete the work. The Company is also researching the possibility of utilizing Owl Creek Reservoir as storage facility from flows outside of Owl Creek. This could be accomplished by pumping water from the Larimer Weld Canal, located approximately $\frac{3}{4}$ of a mile downstream of the reservoir. The Company has received bids and is currently negotiating with Barker Construction, Fort Collins, Colorado to construct project for approximately \$1,250,000. The Company has expended approximately \$450,000 to-date for permitting, soils, and design and will need an additional \$600,000 to complete the project. Staff has indicated to the Company that additional collateral will be required to proceed forward with a loan increase, which is currently being considered.

36 Southeastern Colorado Water Conservancy District – Arkansas Valley Conduit

Authorization: Severance Tax Fund
 Water Source: Arkansas – Fry Ark Project
 Terms of Loan: \$60,600,000@3.25% for 30 yrs.

County: Pueblo, Crowley, Otero, Bent
 Project Yield: 6,555 AF
 Project Type: Raw Water Pipeline

The Arkansas Valley Conduit is designed to bring relatively clean raw water to 41 water providers in the lower Arkansas Valley, who currently either take water from the Arkansas River, and/or pump from shallow and/or deep aquifers. This pumped water has quality problems and requires significant treatment before it meets Clean Drinking Water standards. The conduit will begin at Pueblo Reservoir Dam, where a 30.94 cfs municipal outlet is already in place and reserved for the specific use of the conduit. The conduit will gravity flow approximately 138 miles down the Arkansas River Valley to Lamar. The conduit water will flow by the St. Charles Mesa Water District where it will enter a water filtration plant. As the conduit moves down the valley, spurs will take off the main line to deliver water to local and regional water providers. The conduit will receive its water from the USBR Fryingpan-Arkansas Project. Currently, about 5,779 acre-feet of water per year is available for entities East of Pueblo in an average year. Additionally, Return Flows are retained by the District and can be exchanged back up to Pueblo Reservoir for delivery. These Return Flows can provide up to an additional 1,600 acre-feet of water. Storage is available to these entities in Pueblo Reservoir because they are in the SECWCD service area. This storage will help provide water in the years when less than average water is provided by the Fry-Ark Project. The water will be provided strictly for municipal and industrial purposes. Final chlorination or treatment will be left up to each water provider. The conduit is currently planned to be paid 80% (approximately \$240 million) by the federal government. The District is proceeding with NEPA permitting efforts with Federal funding assistance.

37 Penrose Water District – Water Rights Purchase and Pipeline Installation

Authorization: Severance Tax Fund
 Water Source: Arkansas River
 Terms of Loan: \$8,844,570@3.25% for 30 yrs.

County: Fremont
 Project Yield: 339 AF - Consumptive
 Project Type: Pump/Pipeline/Reservoir

The District currently provides domestic water to approximately 4,000 people with 1,700 taps in and around the Town of Penrose, with existing demand of 489 acre-feet per year. The District's water supply is a lease with the Beaver Park Water, Inc. (BPW) who owns and operates Brush Hollow Reservoir. The 1990 lease has a 30-year term, and provides an increasing amount of water each year, 751 AF in 2006, leveling out at 1,000 AF in 2020. In drought years, the amount available to PWD is further reduced below the contract amount. Future build-out demand in 2040 is projected to be 1,200 acre-feet for about 8,000 residents and 3,240 taps. The Project includes the acquisition of $\frac{5}{6}$ th of the Pleasant Valley Ditch water rights. Water will be diverted through alluvial wells and pumped 6 miles through a 12-inch pipe to Brush Hollow Reservoir. Brush Hollow will be used to store the water through a storage agreement. Water rights were purchased in 2005 with bridge financing. A water court application was filed in 2006.

38 Seven Lakes Reservoir Company – Reservoir Rehabilitation

Authorization: Severance Tax Fund
 Water Source: South Platte
 Terms of Loan: \$772,842@ 2.95% for 30 yrs.

County: Weld and Larimer
 Project Yield: 7,796 acre-feet
 Project Type: Reservoir Rehabilitation

The Seven Lakes Reservoir Company (SLRC) and its sister company Greeley and Loveland Irrigation Company (GLIC), own and operate an extensive system of reservoirs and canals in the Loveland and Greeley area. GLIC owns 4 reservoirs (including Lake Loveland and Boyd Lake) and SLRC owns 5 reservoirs (including Horseshoe Lake, immediately adjacent to Boyd Lake.). SLRC uses GLIC's Big Barnes Ditch to fill Horseshoe Reservoir. Water is carried in the Big Barnes Ditch and discharges into Lake Loveland at a decreed rate of 1000 cfs. SLRC desires to remove and replace an existing deteriorated 5-tunnel railroad crossing structure with a new bridge in order to safely move 1,000 cfs from the Big Thompson River through Lake Loveland to Horseshoe Reservoir, thus removing a serious bottleneck in the flow path of water. This project will install a new pre-fabricated railroad bridge based on BNSF Railroad design requirements. Construction will occur while the track remains in continuous service, with trains expected on a frequency of one about every six hours. Bridge support pilings will be driven during the time intervals when trains are not near the site, and pile caps constructed. Rails, ties and ballast can then be removed and the prefabricated bridge installed. The Company has experienced significant delays in getting contracts in-place to conduct the work with BNSF. UPDATE: The Company is considering the use of a tunnel bore in lieu of a bridge.

39 Deuel and Snyder Improvement Company – Diversion Structure Rehabilitation

Authorization: Severance Tax Fund
 Water Source: South Platte
 Terms of Loan: \$90,900@2.50% for 30 yrs.

County: Morgan
 Project Yield: 4,950 acre-feet
 Project Type: Diversion Rehabilitation

The Deuel and Snyder Improvement Company provides irrigation water to a 1,650 acre service area located in Morgan County. The Company operates a sand gate located on a South Platte River diversion structure. The sand gate is a vent section through the concrete rollover wall which is boarded up when the Company needs to divert water. Boards must be removed during the winter to allow excess sand (which builds up in front of the Company's diversion point) to wash down river. Currently, in order to remove boards and open the gate, a Company employee must walk several yards along the crest of the rollover wall to reach the sand gate. There is not a walkway or handrail for safety. Because this is a major safety concern for the Company, it evaluated alternatives to both improve the safety conditions for its employees and more efficiently operate the gate. The Company elected to replace the existing board gates with a new radial gate. However, after further evaluation from the contractor and engineer it was determined that the foundation of the entire diversion structure has been compromised over time due to long term erosion. Therefore, the Company is currently evaluating it options on how to address the foundation issue prior to commencing with any improvement above. The project costs could escalate considerable.

40 Farmers Highline Canal and Reservoir Co. – System Rehabilitation

Authorization: Construction Fund
 Water Source: Clear Creek
 Terms of Loan: \$1,410,768@4.65% for 30 yrs.

County: Adams/Jefferson
 Project Yield: 24,000 AF
 Project Type: Reservoir Rehabilitation

The Company was established in 1885 and it diverts water off of clear creek and it delivers water through a 31 mile canal running from Golden to Northglenn, through Arvada and Westminster. The Company has

completed a canal evaluation and engineering planning study and identified a list of improvements it intends to do with the CWCB loan proceeds. These items include: replacement of corroded drain pipes, replacement of three siphons, headgate rehabilitation, SCADA control system installation at the headgate, diversion dam rehabilitation, and tree removal along the ditch. This work is expected to be completed between the fall of 2010 through the winter of 2014.

41 Riverside Reservoir and Land Company – Riverside Reservoir Spillway Enlargement

Authorization: Severance Tax Fund	County: Weld
Water Source: South Platte River	Project Yield: 64,000 AF (200 new)
Terms of Loan: \$2,838,100@2.5% for 30 yrs.	Project Type: Spillway

The Riverside Reservoir and Land Company owns and operates the 64,000 acre-foot capacity Riverside Dam and Reservoir, an inlet canal known as Riverside Ditch, and a river diversion structure located near the town of Kersey, Colorado. The Company diverts water from the South Platte River, approximately 10 miles downstream of Greeley, Colorado. It stores water primarily during winter months for irrigation releases during the following water season. The Company delivers irrigation water to approximately 50,000 acres. There is a restriction of ½ foot (200 AF of storage loss) due to the lack of a spillway per State Dam Safety. In order to prevent further storage restrictions, the Project includes constructing an emergency spillway. Construction is expected through the fall of 2011.

42 Riverside Ditch and Allen Extension Company – Ditch System Rehabilitation

Authorization: Construction Fund	County: Chaffee
Water Source: Arkansas River	Project Yield: 3,250 AF
Terms of Loan: \$186,345@2.75% for 30 yrs.	Project Type: System Rehabilitation

The Riverside Ditch and Allen Extension Company, located near Buena Vista, owns and operates the Riverside Ditch that provides irrigation water to a 450 acre service area within Chaffee County. A significant portion of the Company's structures along the 125 year old canal are in need of repair or replacement. The Company intends to complete a number of phased improvements to the canal that include: repairs to the river diversion; lining of portions of the canal to reduce seepage; installation of canal monitoring using SCADA equipment; phreatophyte removal; repair/replacement of aging headgates; and installation of standardized flumes. The proposed improvements would benefit the shareholders by improving overall canal efficiency, thereby increasing the consistency of shareholder headgate deliveries. Improvements are expected to be completed by the spring of 2012. The Company is in the process of designing improvements and constructing seepage repair prior to the Arkansas river Efficiency Rules taking effect on January 1, 2011.

43 Parkville Water District – Canterbury Tunnel Repair

Authorization: Construction Fund	County: Lake
Water Source: East Fork Arkansas	Project Yield: 1.086 AF
Terms of Loan: \$1,838,200@4.0% for 30 yrs.	Project Type: Tunnel Repair

The Parkville Water District provides municipal water for the Town of Leadville and surrounding areas. The District provides service to about 2300 taps. The Canterbury Tunnel has been a critical water supply source to the District for over 45 years. The Tunnel originally served as mine drainage; however, because it was of such good quality and reliability the District added it to its water supply system. About 15 years ago, the flow of water was significantly reduced due to a collapse in the tunnel. The District proposes to

drill a new well to access the functioning part of the tunnel and pump the water to the District's distribution system. The Project design is complete.

44 Las Animas Consolidated Canal Company – Diversion Structure Rehabilitation

Authorization: Construction Fund	County: Bent
Water Source: Arkansas River	Project Yield: 26,000 AF
Terms of Loan: \$77,265@2.75% for 30 yrs.	Project Type: Diversion Rehabilitation

The Las Animas Consolidated Canal Company provides irrigation water to approximately 5,600 acres near Las Animas, Colorado. The Canal Company, along with the Consolidated Extension Canal Company, operates the Las Animas ditch diversion dam, located on the Arkansas River approximately 11 miles east of La Junta and about 7 miles west of Las Animas. The diversion dam was constructed in the late 1800s and is at the end of its useful life. The purpose of this project is to complete emergency repairs to support the dam and to minimize further downstream erosion and deterioration of the diversion dam so that safe and reliable future operations of the structure can be ensured. The loan request is for 6% of the estimated \$1,275,000 total cost of the project. The additional project funding will come from the Consolidated Extension Canal Company (through a CWCB loan) and from Xcel Energy (a large shareholder in both companies). The project has bid and construction will begin around mid November 2010 and work should be completed by March 15, 2011.

45 Consolidated Extension Canal Company – Diversion Structure Rehabilitation

Authorization: Construction Fund	County: Bent
Water Source: Arkansas River	Project Yield: 26,000 AF
Terms of Loan: \$180,285@2.75% for 30 yrs.	Project Type: Diversion Rehabilitation

The Canal Company, along with the Las Animas Consolidated Canal Company, operates the Consolidated Ditch diversion dam, located on the Arkansas River approximately 11 miles east of La Junta and about 7 miles west of Las Animas. The diversion dam was constructed in the late 1800s and is at the end of its useful life. The purpose of this project is to complete emergency repairs to support the dam and to minimize further downstream erosion and deterioration of the diversion dam so that safe and reliable future operations of the structure can be ensured. The loan request is for 6% of the estimated \$1,275,000 total cost of the project. The additional project funding will come from the Las Animas Consolidated Canal Company (through a CWCB loan) and from Xcel Energy (a large shareholder in both companies). The project has bid and construction will begin around mid November 2010 and work should be completed by March 15, 2011.

46 Huefano-Cucharas Irrigation Co. – Cucharas Reservoir Rehabilitation (NOT UNDER CONTRACT)

Authorization: Severance Tax Fund	County: Pueblo/Huerfano
Water Source: Cucharas River	Project Yield: 7,500 AF (New)
Terms of Loan: \$1,622,060@2.5% for 30 yrs.	Project Type: Reservoir Rehabilitation

The Huerfano-Cucharas Irrigation Company provides irrigation water to farmers in the Arkansas valley. The Company was organized in 1944 and currently has 47 shareholders. The Company owns and operates the Cucharas Reservoir, located east of Walsenburg. The dam is a 145-foot high rock fill dam that has undergone several enlargements since the original construction in 1914. The reservoir has a capacity of 35,395 acre-feet. A storage restriction has been in place since 1988 with a deadline of October 1, 2010,

imposed by the SEO either to rehabilitate the existing dam, replace it with a new dam or a zero no-storage restriction will be imposed followed by an order to breach the dam and remove the hazard it represents. The Company plans to rehabilitate the existing dam to allow a reduced level (7,500 AF) of storage. The Project involves lowering the spillway, replacing outlet gates, installing a satellite monitoring system, and updating a new Emergency Action Plan. Pending SEO plan approval, project construction might begin during the winter of 2010/11. The owners of the project have changed since the original authorization by the Board. The project is to be de-authorized and a new project presented to the Board at the November 2010 meeting based on the new owner's financials and project plan.

47 South Metro Water Supply Authority – Raw Water Delivery (NOT UNDER CONTRACT)

Authorization: Construction Fund

County: Adams/Denver/etc.

Water Source: South Platte

Project Yield: 10,750 acre-feet

Terms of Loan: \$5,090,400@4.50% for 30 yrs.

Project Type: Raw Water Delivery

South Metro Water Supply Authority (Authority) is made up of 13 independent water providers that serve communities in the southern area of metro Denver. Currently, the Authority members rely mainly on groundwater aquifers to supply the area's M&I needs. Because this source is nonrenewable, members have been working to identify new supplies of water and opportunities to share resources and infrastructure to reduce dependence on groundwater. The Authority intends to acquire capacity in the East Cherry Creek Valley Water and Sanitation District (ECCV) Northern Supply Pipeline as a means to convey renewable water supplies, recapture consumable return flows, and increase operational flexibility. The Pipeline is a 48-inch steel pipe that runs from Barr Lake to ECCV's service area (located to the east of Cherry Creek Reservoir). The capacity is 47 mgd. The Pipeline is a regional transmission line and will deliver water both to storage reservoirs and directly to Authority members who will then deliver the water through their distribution systems. The Authority is acquiring a total of 31.98 mgd of excess capacity from ECCV. The four members seeking funding from the CWCB will be acquiring 6.55 mgd of this total capacity. Final purchase and operating agreements are still under negotiation.

**March 15-16, 2011 Board Meeting
Instream Flow and Natural Lake Level Program
Summary of Resolved Cases**

The Board's ISF Rule 8i. states that:

“In the event the pretrial resolution includes terms and conditions preventing injury or interference and does not involve a modification, or acceptance of injury or interference with mitigation, the Board is not required to review and ratify the pretrial resolution. Staff may authorize its counsel to sign any court documents necessary to finalize this type of pretrial resolution without Board ratification.”

Staff has resolved issues of potential injury in the following water court cases and authorized the Attorney General's Office to enter into stipulations that protect the CWCB's water right:

(1) Case No. 2-03CW055 -- Application of Upper Arkansas Water Conservancy District

The Board ratified this statement of opposition at its September 2003 meeting. The Board's main objective in filing the statement of opposition in this case was to ensure that the Applicants' plan for augmentation does not injure the Board's instream flow water right on Browns Creek. Applicants' proposed plan for augmentation may not have replaced depletions in the same amount, timing or location of use. Staff, in cooperation with the Attorney General's Office, has negotiated a settlement to ensure that the CWCB's instream flow water right will not be injured.

The Board holds the following instream flow water right that could have been injured by this application:

CWCB Case No.	Stream/Lake	Amount (cfs)	Approp. Date	Watershed	County
2-75W4287	Browns Creek	2/5	7/9/75	Arkansas Headwaters	Chaffee

The CWCB and the Applicants have agreed to the entry of a decree that will prevent injury to the Board's ISF water right on Browns Creek. The Applicants have agreed to the following terms and conditions:

- This case does not provide for augmentation of any water diversions within or tributary to Brown's Creek in Chaffee County. Any augmentation of structures within or tributary to Brown's Creek in Chaffee County will require a new water court application.
- The approval of the plan for augmentation shall be subject to reconsideration by the Water Judge on the question of injury to the vested rights of others for a period of ten years from the date of the decree as entered by the Water Judge.

(2) Consolidated Case Nos. 5-07CW055 and 5-07CW054 into Case No. 5-07CW176: Applications of Roaring Fork Club, L.P. consolidated with St Jude's Co. and Reno Cerise v. Roaring Fork Club, L.L.C.

The Board ratified the statement of opposition filed in these cases at its July 2007 meeting. The Board's main objective in filing this statement of opposition was to ensure that the Applicant's plan for augmentation and exchange do not injure the Board's instream flow rights on the Roaring Fork River. Applicants' proposed

plan for augmentation and exchange may not replace depletions in the same amount, timing or location of use.

The Board holds the following instream flow water rights that could have been injured by this application:

CWCB Case No.	Stream/Lake	Amount (cfs)	Approp. Date	Watershed	County
5-85CW646	Roaring Fork River	55/30	11/8/85	Roaring Fork River	Pitkin, Eagle

The CWCB and the Applicants have agreed to the entry of a decree that will prevent injury to the Board's ISF water rights on the Roaring Fork River. The Applicants have agreed to the following terms and conditions:

- Applicant shall install measuring devices, provide accounting, and supply calculations regarding the timing of depletions as may be required by the Division Engineer by November 15th following each preceding irrigation year (November 1 through October 31), or if required by the Division Engineer or if requested by the Snowmass Water & Sanitation District by the 15th of the month following each month of the irrigation year, summarizing diversions and replacements made under this plan.
- During the period from June to September, all out-of-priority evaporative depletions caused by diversions to the RFC Ditch will be augmented by historic consumptive use credits associated with the development dry-up of the acreage previously irrigated under the water rights.
- In the event of administration of a senior call on the Roaring Fork River between the RFC Ditch headgate and the confluence with the Frying Pan River from October through May, Applicant will curtail all out of priority diversions to the RFC Ditch accordingly.
- Applicant acknowledges that the CWCB has an instream flow water right decreed in Case No. 85CW646 with an appropriation date of November 8, 1985 for 55 c.f.s. (April 1-September 30) and 30 c.f.s. (October 1 - March 31) on the Roaring Fork River. At times when this instream flow water right is not being satisfied below the Applicant's RFC Ditch diversion structure and the CWCB has placed a call that is recognized and administered by the Division Engineer, Applicant agrees to curtail its out-of-priority diversions under the RFC Ditch Original Adjudication and RFC Ditch First Enlargement water rights, unless: 1) the out-of-priority depletions from said out-of-priority diversions are replaced at or upstream of the RFC Ditch diversion structure; and (2) the instream flow is satisfied in the reach of the Roaring Fork River between the RFC Ditch diversion and the location of the RFC Ditch return flow.
- During the months from October through May, if a valid senior call recognized and administered by the Division Engineer is placed by a water right located between the RFC Ditch point of diversion and the confluence of the Roaring Fork River and the Frying Pan River, Applicant will curtail out of priority diversions under its RFC Ditch Original Adjudication and First Enlargement water rights, unless said out-of-priority diversions are replaced in such a manner as to satisfy the calling right.

(3) Case Nos. 5-05CW240—Application of Drake Revocable Trust

The Board ratified the statement of opposition filed in this case at its May 2009 meeting. The Board's main objective in filing this statement of opposition was to ensure that the Applicant's plan for augmentation and

exchange does not injure the Board's instream flow rights on Crooked Creek and the Fraser River. The proposed augmentation and exchange may not have replaced out-of-priority depletions in amount, timing or location.

The Board holds the following instream flow water rights that could have been injured by this application:

CWCB Case No.	Stream/Lake	Amount (cfs)	Approp. Date	Watershed	County
5-90W296	Crooked Creek	8/4/2.75	11/27/90	Colorado headwaters	Grand
5-90CW380B	Fraser River	30/19	11/27/90	Colorado headwaters	Grand

The CWCB and the Applicant have agreed to the entry of a decree that will prevent injury to the Board's ISF water rights on Crooked Creek and the Fraser River.

The Applicants have agreed to the following terms and conditions:

- Prior to construction or operation of the subject wells, Applicant shall obtain well permits from the Colorado Division of Water Resources pursuant to C.R.S. §37-90-137(2), which shall be issued pursuant to the plan for augmentation approved herein.
- Prior to the issuance of well permits for the subject wells, Applicant shall provide the Division Engineer with written notice that adequate augmentation water has been stored in and is available for release from Pole Creek Meadows Reservoir No. 1 or Grand Country Pond No.1 or an on-site storage tank, and that devices satisfactory to the Division Engineer for measuring and releasing water from such facilities are in place and operational.
- Prior to initial operation of the Grand Country Exchange confirmed herein, Applicant shall provide written notice to the Division Engineer that it intends to commence operation of the exchange.
- The Applicant shall install such measuring devices, provide - accounting, and supply calculations regarding the timing of depletions as may be reasonably required by the Division Engineer for the operation of the plan for augmentation approved herein.
- The Applicant shall file an annual report to the Division Engineer by November 15th of each year summarizing diversions and replacements made under the augmentation plan approved herein.
- The approval of such augmentation plan shall be subject to reconsideration by the Water Judge on the question of injury to the vested rights of others for a period beginning with the date of entry of this decree and continuing until five calendar years after the Applicant provides written notice to the parties, the Court and the Division Engineer that the plan for augmentation is operational and has been operated to replace 2.0 acre feet of annual depletion. The notice will confirm that the augmentation sources are in place to the extent necessary to properly operate the plan, and that the terms and conditions of operation have been met. In determining the period of reconsideration, the Court has taken into account the proposed use of the subject water rights.

(4) Case No. 5- 05CW037 -- Application of The Aspen Preserve Homeowners Association, Inc.

Along with the State Engineer's Office, the Board filed the Complaint Invoking Retained Jurisdiction in this case in May, 2009. The Board's main objective in filing the complaint was to ensure that the Applicant's operations do not injure the Board's instream flow rights on the Roaring Fork River.

The Board holds the following instream flow water rights that could have been injured by this decree:

CWCB Case No.	Stream/Lake	Amount (cfs)	Approp. Date	Watershed	County
5-76W2950	Roaring Fork River	10	1/14/76	Roaring Fork River	Pitkin, Eagle
5-76W2949	Roaring Fork River	15	1/14/76	Roaring Fork River	Pitkin, Eagle
5-76W2948	Roaring Fork River	32	1/14/76	Roaring Fork River	Pitkin, Eagle

The CWCB and the Applicants have agreed to a stipulation that will prevent injury to the Board's instream flow water rights on the Roaring Fork River. The Applicants have agreed to the following terms and conditions:

- Within ninety (90) days of the date of this Stipulation, Applicant will develop and file an application to supplement the plan for augmentation in Case No. 98CW191 to add the augmentation of the evaporative losses from the 0.5 surface acres of open water attributable to the new Preserve Pond Well First Enlargement water right not augmented under Case Nos. 98CW191 or 05CW037.
- The HOA will prosecute the Application with diligence and upon a final decree, promptly construct the new lined pond, remove or disable the existing control gauge, install such measuring devices which the Engineers deem proper, apply for an amended well permit consistent with the final decree and the enlarged volume and surface area of the Preserve Pond Well, and implement operation of the plan for augmentation. Until the entry of a final decree in the new case, the HOA shall comply with the terms and conditions of its decrees in Case Nos. 98CW191 and 05CW37 or the terms and conditions of any substitute water supply plan approved by the State Engineer under section 37-92-308(4), C.R.S. in conjunction with the new Application.
- The State will not oppose the new Application required by this Stipulation but may file statements of opposition to the Application for the limited purpose of ensuring that the terms of this Stipulation are properly implemented or included in any resulting Ruling or Decree of the Court.

[illegible]

Attachment 3

South Platte	Weld, Denver	NCWCD	Data Logger & Telemetry Install Project	Jul-10	\$46,000.00	\$0.00	\$ 46,000.00	Structural project or activity	Todd	07/27 Congrat's letter sent requesting insurance, w-9.
2010 May Board Approvals										
Gunnison Basin	Gunnison	New Fiscal Agent	75 Ditch Diversion Improvements and Feature Enhancements	May-10	\$46,100	\$0	\$46,100	Structural project or activity	Todd	Change of applicant request at Nov 2010 Board mtg. 5/19/10 CWCB Board approved w/ conditions
Gunnison Basin	Gunnison	Lake San Cristobal Water Activity Enterprise (LSCWAE)	Lake San Cristobal Outlet Structure	May-10	\$150,000	\$0	\$150,000	Structural project or activity	Todd	5/19/10 CWCB Board approved w/ conditions
Rio Grande	Alamosa	The Colorado Rio Grande Restoration Foundation	2009 Rio Grande Riparian Stabilization Project - Phase 4	May-10	\$50,000	\$98,000	\$148,000	Structural and nonstructural project or activity. (Note: Statewide request to be considered at September board meeting)	Chris S.	5/19/10 CWCB Board approved w/o conditions
2010 January Board Approvals										
Yampa/White/Green	Rio Blanco/Garfield/Moffat	Colorado River WCD	Water Storage Feasibility	Jan-10	\$220,800	\$0	\$220,800	Technical assistance regarding permitting, feasibility studies, and environmental compliance. Study of Structural Project	Jacob	2/22/11 to DNR Purchasing for review & apprv'l. 11/18 Contracting to Greg Johnson. 10/20 Applicant will request change of applicant @ Nov 2010 Board Mtg.
2009 September Board Approvals										
Rio Grande		Mineral County Fairgrounds Association	Lower Willow Creek Restoration Project	Sep-09	\$50,000	\$200,000	\$250,000	Structural and/or nonstructural water project or activity	Greg	8/3 Greg to follow up with Applicant. Applicant has requested a change of fiscal agent to the City of Creede to be addressed at the July 2010 CWCB Board Meeting.
2009 July Board Approvals										
Southwest	San Miguel	Town of Sawpit	Domestic Water System Construction	Jul-09	\$25,000	\$0	\$25,000	Structural water project or activity	Greg	8/3 Still pending per GJ. 6/8/10 Corresp to Steve Johnson (8750law.com) frm Greg re: req for W-9, Ins and SOW have not been completed by the Town. Pending
2008 September Board Approvals										
Colorado	Garfield	USFS	Battlement Reservoir #3 Dam reconstruction to enhance recreational & environmental opportunities	Sep-08	\$80,000	\$0	\$80,000	Structural and/or non structural water project or activity	Jacob	11/18 Lori Martin 9-255-6126 Start PO process. Applicant Correspond. On 6/29/09. Request that Grant be put on hold till 2011. See project file L:drive for details
Metro/South Platte		Water Environment Research Foundation	Demonstration of membrane zero liquid discharge process for drinking water systems (\$50,000 Metro Basin Fund Contribution)	Sep-08	50k Metro, 25k Ark, 25k SP	700K/3	\$800,000	Technical assistance regarding permitting feasibility studies and environmental compliance	Greg	2/17 Fair & Reasonable Pricing Questions. See email to Greg from MVC. 2/10 to DNR for Review/Apprv'l. 10/28 Contract to Applicant for sig. 8/3 Waiting for SOW, W-9, Ins frm new Applicant per GJ. 7/26 Change of Applicant request apprv'd to WERF@ July Board mtg. Email to Brandhuber, Philip J.; Claudio Ternieden; DAVE Akers contracting docs.

WSRA IN PROGRESS PROJECTS

UPDATED 02/24/11

														Complete/n Progress /Contracting Pending	Project Manager	
Basin	County	Applicant	Name of Water Activity	CWCB Mtg Approved	Basin Account	Statewide Account	Total Request	Type of Water Activity	Number	Amount	Matching Funds Authorized	Matching Funds Paid	Project Expire Date	Final Date Closed		
Arkansas	Pueblo,Otero, Bent,Crowley, Powers,Fremont,Kiowa, Chaffee, El Paso	Southeastern Colorado Water Activity Enterprise	Arkansas Valley Conduit	Mar-07	0	\$200,000	200,000	Study/analysis of structural activity Studies/analysis structural/nonstructural, consumptive/non water needs projects	C150406	\$200,000	\$352,000		06/30/11		In Progress	Todd
Arkansas	No information on Summary for counties	Colorado State Univ.	Geospatial decision support system for integrated water mgmt Telemetry data collection platforms at six reservoirs plus flow control equipment & gauging at six reservoir outlet channels & nine streams w/in the upper Ark River basin	Sep-08	100,000	\$500,000	600,000		C150441	\$599,931	Unknown		06/30/12		In Progress	Andy
Arkansas	Chaffee, Fremont, Custer	Upper Arkansas WCD	John Martin Wetlands & Neenoshe Reservoir Nonconsumptive Needs Quantification	Sep-08	75,000	\$210,332	285,332	Structural and/or nonstructural water project or activity	C150439	\$285,332	\$529,884		12/31/11		In Progress	Andy
Arkansas	Bent, Kiowa	Lower Arkansas Valley Water Conservancy District		May-09	148,975	\$0	148,975	Study/analysis of nonconsumptive water needs Study or analysis of non structural, consumptive, or nonconsumptive water needs and projects	C150457		\$43,250		06/30/11		In Progress	Jacob
Arkansas	Chaffee,Lake, Saguache	Upper Arkansas Water Conservancy District	UAWCD Hydrologic Water Balance Study	Sep-09	\$0	\$180,000	180,000	Studies or analysis of structural, nonstructural, consumptive, nonconsumptive water needs and project	C150460	\$180,000			06/30/13		In Progress	Todd
Arkansas	El Paso	El Paso County Water Authority/The Keystone Center	Flaming Gorge Project Task Force Assessment	May-10	\$20,000	\$0	\$20,000	Studies or analysis of nonconsumptive water needs and project	11000000008	\$ 20,000.00			06/30/11		In Progress	Jacob
Arkansas	Chaffee, Fremont, Pueblo	Southeastern CO WCD	Stakeholders Coop Mgmt Analysis for the UARB	Jul-10	\$33,600.00	\$0.00	\$ 33,600.00	Studies or analysis of nonconsumptive water needs and project	11000000012	\$33,600			06/30/11		In Progress	Jacob
Arkansas	Pueblo	City of Pueblo	Bedload/Sediment Collection and Removal Technology - Fountain Creek	Sep-09	\$75,000	\$150,000	\$225,000	Study or analysis of structural, non structural, nonconsumptive water needs, projects	C150465	\$ 225,000.00			6/30/2013		In Progress	Todd
Arkansas Basin Total Request					452,575	\$1,240,332	1,692,907									
Number of Projects					8											
Colorado	No information on Summary for counties	City of Grand Junction Basalt Water Conservancy District	Energy Development Water Needs Assessment (300,000 Joint Application see Yampa)	Mar-07	0	\$150,000	150,000	Study of consumptive water needs assoc. w/energy develop. in the CO, White& Yampa river basins	C150407	\$150,000	\$0		03/31/11		In Progress	Jacob
Colorado	Garfield, Eagle Grand, Pitkin, Eagle, Garfield, Summit,Mesa	Northwest Colorado Council of Governments	Missouri Heights	Sept-07	25,000	\$0	25,000	Non-structural study--ground water monitoring, phase II	8000000049	\$25,000	\$25,000		01/31/13		In Progress	Jacob
Colorado			Colorado Basin Nonconsumptive Needs Quantification	Mar-09	315,171	\$0	315,171	Nonstructural study of nonconsumptive needs	C150451	\$315,171	\$25,000		06/30/11		In Progress	Jacob
Colorado	Eagle/Pitkin/ Garfield	Ruedi Water and Power Authority	Roaring Fork Watershed Assessment - Phase 2	May-08	\$40,000.00		\$40,000.00	Study/Analysis Consumptive and Non-Consumptive Project	9000000049	\$40,000.00					In Progress	Chris
Colorado	Grand County	Grand County Basalt Water Conservancy District	Fraser Sedimentation Basin	Mar-08	\$60,000.00	\$127,900.00	\$187,900.00	Structural Water Project	C150449	\$187,900			6/30/2012		In Progress	Greg
Colorado	Eagle/Garfield		Missouri Heights Solicitation of stakeholder input and advice through a Colorado River Basin edition of Headwaters Magazine	Sept-07	\$25,000.00	\$0.00	\$25,000.00	Non-structural study--ground water monitoring, phase II	8000000049	\$25,000			01/31/13		In Progress	Todd
Colorado	Grand, Summit, Eagle, Pitkin, Garfield, Mesa	Colorado Foundation for Water Education	Colorado	Sep-10	\$25,000.00		\$25,000	Nonstructural water project or activity	11000000039	\$25,000			06/30/11		In Progress	Jacob
Colorado Basin Total Request					490,171	\$277,900	768,071									
Number of Projects					8											
Southwest		San Juan Water Conservancy District	Dry Gulch Reservoir/San Juan Reservoir Land Acquisition	Mar-07	0	\$1,000,000	1,000,000	Structural Water Project -- Land Acquisition for Reservoir Site	C150408	\$1,000,000	\$8,100,000		12/31/25		In Progress	Rick
Southwest		Town of Silverton Florida Mesa Canal Companies (Florida Canal, Florida Farmers Ditch, Florida Enlargement Ditch, and the Florida Co-operative Ditch Company)	Molas Lake Ditch Rehabilitation and Diversion Structures	Jan-09	95,000	\$0	95,000	Structural Project	9000000143		\$1,100,000		06/30/10	06/30/11	In Progress	Greg
Southwest			Ditch Loss, Hydropower, and Monitoring Improvement Program	Mar-09	100,000	\$0	100,000	Technical Assistance for Feasibility Studies; Study & Implementation of a Structural, Consumptive Water Project	9000000115		\$300,000		06/30/11		In Progress	Greg
Southwest	Montezuma	Bauer Lake Water Company	Bauer Lakes Water Co. Dam Outlet Structure Upgrade	Mar-08	40,000		40,000	Structural Project	1000000084	\$40,000	\$70,000		12/31/11		In Progress	Greg
Southwest	La Plata, Archuleta	La Plata Archuleta Water District	La Plata Archuleta Water District	Sep-09	\$0	\$400,000	400,000	Technical assistance regarding permitting feasibility studies and environmental compliance	C150459	\$400,000	\$150,000		06/30/13		In Progress	Greg

Attachment 4

Southwest	La Plata	Florida Mesa Canal Companies	Canal Seepage Reduction Program	Sep-09	\$0	\$225,000	225,000	Technical assistance regarding permitting feasibility studies and environmental compliance; and study or analysis of structural project or activity	C150463	\$225,000		06/30/11	In Progress	Greg	
Southwest	San Miguel	Town of Norwood	Raw Water System Update and Future Needs Study	Jan-10	\$0	\$58,458	58,458	Study/analysis of consumptive water project or activity	1000000085	\$58,458		06/30/11	In Progress	Greg	
Southwest	Montezuma	Goodman Point Water Association	Goodman Point Phase 2	Sept-07	\$20,000.00	\$240,000	260,000	Structural Project	C150462	\$260,000		06/30/12	In Progress	Greg	
Southwest	Montezuma	Mancos Conservation District	Mancos River Diversion Project, Phase I	Nov-09	\$24,753	\$0	24,753	Study/analysis of structural nonconsumptive water project or activity	10000000111	\$24,753		12/30/10	06/30/11	In Progress	Greg
Southwest	La Plata	Red Mesa Reservoir and Ditch Company	Red Mesa Dam & Reservoir - Incremental Damage Analysis (IDA) & Emergency Action Plan (EAP)	May-09	\$29,000	\$0	\$29,000	Study or analysis of structural/nonstructural water needs, projects	1000000061	\$29,000		12/31/11	In Progress	Greg	
Southwest	All Counties in SW Basin	Mancos Valley Resources Inc.	Protecting Irrigated Agricultural Lands and Water Rights for Agricultural Production	Nov-09	\$31,500	\$0	\$31,500	Study/analysis of nonstructural consumptive water project or activity	10000000125	\$ 31,500.00		6/30/2011	In Progress	Todd	
Southwest	La Plata	San Juan Resource Conservation and Development - Animas Watershed Project	Animas River Needs Assessment	Sep-09	\$57,000	\$0	\$57,000	Study or analysis of non structural, nonconsumptive water needs and projects	11000000028	\$ 57,000.00		9/30/2012	In Progress	Greg	
Southwest	La Plata	Florida Mesa Canal Companies	Canal Seepage Reduction Program	Sep-10	\$0	\$775,000	\$775,000	Structural and/	C150475	\$775,000		6/30/2013	In Progress	Greg	
Southwest Basin Total Request					397,253	\$2,698,458	3,095,711								
Number of Projects		14													
Gunnison	Delta	Leroux Creek Water Users Association (LCWUA)	Safety and Serviceability Needs Inventory for Reservoirs in the Leroux Creek Drainage Basin	May-07	60,000	\$0	60,000	Study/Analysis	8000000008	\$60,000	\$10,000	06/30/08	06/30/11	In Progress	Todd
Gunnison	Gunnison	North Fork Water Conserv District (NFWCD) and Fire Mountain Canal& Reservoir Company (FMCC)	Sedimentation Management Study For Paonia Reservoir - North Fork of the Gunnison	Sept-07	79,000	\$230,000	309,000	Study/Analysis	C150414	\$309,000	\$10,000	02/28/13		In Progress	Todd
Gunnison	Delta	Overland Ditch and Reservoir Company	Overland Reservoir Dam Expansion/Restoration	Sept-07	0	\$68,000	68,000	Feasibility Study and Environmental Permitting Assistance	8000000038	\$68,000	\$0	08/31/08	06/30/11	In Progress	Todd
Gunnison	Hinsdale	Upper Gunnison WCD	Phase II Engineering for Lake San Cristobal Outlet Modification	July-08	75,265	\$0	75,265	Study of structural project/activity	9000000041	\$75,265	\$0	01/31/09	06/30/11	In Progress	Todd
Gunnison	Hinsdale	Upper Gunnison WCD	Lake San Cristobal Outlet Structure Modification--Phase III	Sep-08	0	\$120,960	120,960	Studies or analysis of structural, nonstructural, consumptive, non consumptive water needs projects	C150444		\$0	06/30/11		In Progress	Todd
Gunnison	Ouray	Town of Ridgway	Ridgway Ditch and Lake Otonawanda Improvement Project	Mar-09	109,500	\$0	109,500	Technical Assistance Regarding Permitting, Feasibility Studies, and Environmental Compliance; and Study or Analysis of a Structural Project	C150455	\$109,500	\$27,380	06/30/11		In Progress	Greg
Gunnison	Ouray	City of Ouray	Development of Augmentation Supplies	May-09	50,000	\$0	50,000	Structural and/or nonstructural water project or activity	10000000041	\$50,000	\$87,129	06/30/11		In Progress	Jacob
Gunnison	Delta	Leroux Creek Wtr Users Association	Hanson Reservoir Outlet Rehab	Jul-10	\$50,000.00	\$0.00	\$ 50,000.00	Structural project or activity	11000000068	\$50,000	\$50,000	06/30/12		In Progress	Greg
Gunnison Basin Total Request					423,765	\$418,960	842,725								
Number of Projects		8													
Metro	Arapahoe,Adams Weld	Lost Creek Groundwater Management District	Lost Creek Aquifer Recharge and Storage Study	Jan-09	80,000	\$0	80,000	Studies or analysis of structural, consumptive water projects	C150447	\$160,000	\$13,000	06/30/11		In Progress	Greg
Metro	El Paso	El Paso County Water Authority/The Keystone Center	Flaming Gorge Project Task Force Assessment	May-10	\$20,000	\$0	\$20,000	Studies or analysis of structural, nonstructural, consumptive, nonconsumptive water needs and project	OE11-08	\$ 20,000.00		06/30/11		In Progress	Jacob
Metro		Douglas County Water Resource Authority	Feasibility Study for Bureau of Reclamation Funding from the National Rural Water Supply Act	Sep-09	\$100,000	\$500,000	\$600,000	Technical assistance regarding permitting feasibility studies and environmental compliance; and study or analysis of structural project or activity	C150470	\$600,000.00	\$1,125,000.00	06/30/13		In Progress	Jacob
Metro	Douglas	Douglas County Water Resource Authority	Rotary Sprinkler Nozzle Retrofit	Sep-10	\$0	\$250,000	\$250,000	Structural project or activity	C150471	\$ 250,000.00	\$ 87,500.00	6/30/2013		In Progress	Jacob
Metro	Douglas	Rural Water Authority of Douglas County	Rural Douglas County groundwater-level monitoring network	Sep-10	\$28,263	\$84,792	\$113,055	Study or analysis of nonstructural project or activity	C150473	\$ 113,055.00	\$ 60,880.00	6/30/2013		In Progress	Jacob
Metro	Douglas, Arapahoe	South Metro Water Supply Authority	Aquifer Recharge Pilot Study	Sep-10	\$0	\$125,000	\$125,000	Study or analysis of consumptive water project or activity	Jacob	\$125,000		06/30/13			
Metro		South Metro Water Supply Authority	Aquifer Recharge Pilot Study	Sep-09	\$0	\$425,000	\$425,000	Study or analysis of consumptive water project or activity	Jacob	\$425,000		06/30/13			
Metro Basin Total Request					228,263	\$1,384,792	1,613,055								

Attachment 4

Number of Projects		7												
North Platte		Town of Walden	Town of Walden Water Supply Improvement Project Effects of Mtn pine beetle & forest mgmt on water quantity, quality, & forest recovery N.P. and Upper CO River basins	Jul-08	385,000	\$0	385,000	Structural &/or Non-structural water project or activity	C150431	\$385,000	\$0	06/30/11	In Progress	Todd
North Platte		USFS	Monitoring the effects of weather conditions on the evapotranspiration in N.P.Basin	Sep-08	212,306	\$164,618	376,923	Studies or analysis of nonstructural project or activity	C150440	\$376,923	In-Kind	06/30/13	In Progress	Greg
North Platte		Colorado Climate Center--CSU		Sep-08	50,409	\$50,409	100,818	Studies or analysis of consumptive water needs project or activity	C150438	\$100,818	Volunteer	06/30/14	In Progress	Greg
North Platte	Jackson	Ducks Unlimited, Inc.	North Park Irrigated Meadow Conservation Program – Phase I	May-10	\$20,000	\$0	\$20,000	Environmental compliance and feasibility study. Technical assistance regarding permitting, feasibility studies, and environmental compliance.	10000000126	\$20,000	\$ 41,338	6/30/2014	In Progress	Greg
North Platte Basin Total Request					667,715	\$215,027	882,741							
Number of Projects		4												
Rio Grande		Santa Maria Reservoir Company	Santa Maria and Continental Reservoirs: Rehabilitation and Multiple Use Studies	Sep-08	50,000	\$141,700	191,700	Studies or analysis of nonstructural project or activity. Structural and/or nonstructural water project or activity	C-150443		\$18,300	06/30/11	In Progress	Kirk
Rio Grande		Colorado Rio Grande Restoration Foundation	2008 Rio Grande Riparian Stabilization Project	Sep-08	35,000	\$250,000	285,000	Structural and/or nonstructural water project or activity	C150452		\$356,000	12/31/12	In Progress	Chris S.
Rio Grande		San Luis Valley Irrigation District	Rio Grande Reservoir Multi-Use Rehabilitation: Refinement and Enhancement of Reservoir Reoperation and Optimization Model	Nov-08	100,000	\$0	100,000	Structural and/or nonstructural water project or activity	C150437	\$100,000	\$0	06/30/10	In Progress	Kirk
Rio Grande		Colorado Rio Grande Restoration Foundation	Rio Grande Conservation Reserve Enhancement Program (CREP) Phase II - Implementation	Sep-09	31,500	\$0	31,500	Environmental compliance & feasibility study, technical assist regarding feasibility studies & environmental compliance, analysis of consumptive & nonconsumptive water projects	10000000056		\$0	06/30/11	In Progress	Greg
Rio Grande		Trinchera Irrigation Company	Canal Restoration	Sep-09	\$104,000	\$150,000	254,000	Structural and/or nonstructural water project or activity	C150458	\$254,000	\$46,500	07/31/11	In Progress	Greg
Rio Grande	Costilla Saguache, Rio Grande, Conejos, Archuleta, Alamosa, Hinsdale, Costilla	San Luis Peoples Ditch Company	San Luis Peoples Ditch Upgrade and Rehabilitation Project - Phase I	May-10	\$40,000	\$0	\$40,000	Structural project or activity	11000000053	\$40,000	\$102,000	06/30/11	In Progress	Greg
Rio Grande		Rio Grande Watershed Conservation and Education Initiative	Educating Today to Balance Tomorrow's Water Supplies & Needs	May-10	\$25,000	\$0	\$25,000	Nonstructural project or activity	11000000059	\$25,000	\$163,900	06/30/12	In Progress	Jacob
Rio Grande Basin Total Requests					385,500	\$541,700	927,200							
Number of Projects		8												
South Platte		District 64 Reservoir Company	Ovid Reservoir Comprehensive Feasibility Study	Sept-07	176,000	\$0	176,000	Study/Analysis of Structural Water Project	C150417	\$176,000	\$1,000,000	06/30/11 Extended	In Progress	Todd/Kirk
South Platte		Northern Colorado Water Conservancy District	Stage Discharge Data Loggers and Telemetry	Jan-08	48,800	\$0	48,800	Structural Activity	8000000120	\$48,800		10/30/08 06/30/11	In Progress	Todd
South Platte		Ducks Unlimited, Inc.	Weld County School Dist RE1 Wetland Partnership	Jul-08	42,110	\$0	42,110	Structural water project or activity	9000000063	\$42,110	\$160,000	07/31/11	In Progress	Todd
South Platte		Ducks Unlimited	S.P. Water protection and restoration	Sep-08	0	\$825,552	825,552	Structural and/or nonstructural water project or activity	C150432	\$825,552	\$2,000,000	12/31/10	In Progress	Todd
South Platte		The Nature Conservancy of Colorado	Arickaree River Well retirement program, Republican River basin, CO.	Sep-08	19,984	\$79,936	99,920	Studies or analysis of nonstructural project or activity. Structural and/or nonstructural water project or activity	09000000084	\$99,920	\$471,920	12/31/09 06/30/11	In Progress	Todd
South Platte		Lost Creek Groundwater Management District	Lost Creek Aquifer Recharge and Storage Study	Jan-09	80,000	\$0	80,000	Studies or analysis of structural, consumptive water projects	C150447		See Metro	06/30/11	In Progress	Greg
South Platte		Ducks Unlimited, Inc.	Central South Platte Wetland Partnership	Mar-09	150,000	\$0	150,000	Environmental Compliance and Feasibility Study and Structural Water Project	C150454		\$565,000	06/30/11	In Progress	Greg
South Platte		Fort Morgan Reservoir and Irrigation Company (FMRICo)	FMRICo Recharge & Wetlands Project	Sep-09	\$250,000	\$420,000	\$670,000	Structural and/or nonstructural water project or activity	C150464	\$670,000		06/30/12	In Progress	Todd
South Platte	Larmier, Weld, Logan, Sedgwick, Wash, Phillips, Yuma	Co Climate Center, CSU	Co Agricultural Meteorological Network (CoAgMet)	Jul-10	\$20,000.00	\$0.00	\$ 20,000.00	Structural project or activity	11000000079	\$ 20,000		06/30/12	In Progress	Greg
South Platte	Morgan, Washington, Logan, Sedgwick	Lower South Platte Water Conservancy District	Lower South Platte Water Cooperative South Platte Basin Organizational Analysis	Sep-10	\$60,977.00	\$200,000.00	\$260,977.00	Studies or analysis of structural, nonstructural, consumptive, nonconsumptive water needs, projects	C150476	\$260,977.00	\$100,000	6/30/2012	In Progress	Todd
South Platte Basin Total Request					847,871	\$1,525,488	2,373,359							
Number of Projects		10												

Attachment 4

Y/W/G		City of Grand Junction	Energy Development Water Needs Assessment (300,000 Joint Application see Colorado)	Mar-07	0	\$150,000	150,000	Study of consumptive water needs associated with energy development in the Colorado, White and Yampa river basins	C150407	\$300,000	\$0	03/31/11	In Progress	Jacob
Y/W/G		Town of Yampa	Town of Yampa Water Facilities Plan and storage tank upgrades	Sep-08	61,062	\$0	61,062	Studies or analysis of structural and consumptive water needs projects or activity. Structural and/or nonstructural water project or activity	9000000090		\$15,626			
Y/W/G		Moffat County	Sandwash basin coalbed methane production depletive effects on water resources	Sep-08	20,000	\$98,835	118,835	Studies or analysis of consumptive water needs project or activity	C150435		\$2,000			
Y/W/G	Rio Blanco/Garfield/Moffat	The Nature Conservancy	Yampa White Basin Non consumptive Needs Assessment Watershed Flow Evaluation Tool	Jan-10	\$169,002.35	\$0.00	\$169,002	Study/analysis of nonconsumptive water project or activity	C150466					
Y/W/G	Garfield,Routt	Bear River Reservoir Company	Stillwater Reservoir Seepage Project	Sep-09	\$189,000	\$0	\$189,000	Structural and/or nonstructural water project or activity	C150469					
Y/W/G		Colorado Climate Center, Colorado Division of Water Resources	Improvement of lysimeter operations and consumptive use quantification in high-altitude, irrigated meadows in the Yampa /White Basin	Sep-10	\$10,000	\$10,978	\$20,978	Studies or analysis of structural, nonstructural, consumptive, nonconsumptive water needs, projects	11000000058		\$20,978			
Y/W/G Basin Total Request					449,064	\$259,813	708,877							
Number of Projects		6												
Total WSRA Project In Progress		73			\$ 4,342,176.81	\$ 8,562,469.92	12,904,647							

WSRA COMPLETED PROJECTS

Updated 02/24/2011

Basin	County	Applicant	Name of Water Activity	CWCB Mtg Approved	Basin Account	Statewide Account	Total Request	Type of Water Activity	Number	Match Funds Authorized	Match Funds Paid	Expire	Closed	PM	
Arkansas	Pueblo,Otero/ Crowley, Bent, Powers, Fremont, Chaffee, ElPaso, Kiowa	Southeastern Colorado Water Conservancy District	Tamarisk	Mar-07	\$0	\$50,000	\$50,000	Study/analysis of nonstructural water activity	8000000005				06/30/09	Todd	Completed
Arkansas	El Paso	El Paso County Water Authority	Upper Black Squirrel Creek Aquifer Recharge Investigation	Mar-07	\$45,200	\$0	\$45,200	Study or Analysis of Structural Project	8000000011					Andy	Completed
Arkansas	El Paso	El Paso County Water Authority	Ground Water Conference Fountain Creek Vision Task Force	Mar-07	\$24,721	\$0	\$24,721	Study/analysis of nonstructural activity	8000000010			10/10/07	06/30/09	Andy	Completed
Arkansas	Pueblo, ElPaso, Teller	Pueblo and El Paso Counties		May-07	\$75,000	\$0	\$75,000	Facilitation and Analysis	8000000084			06/30/09	06/30/09	Eric	Completed
Arkansas	Custer	Round Mountain Water and Sanitation District	Round Mountain Water & Sanitation District Water System Improvements Project	May-07	\$120,000	\$0	\$120,000	Structural Water Project	C150403			09/02/09	09/17/09	Todd	Completed
Arkansas	El Paso, Elbert, Lincoln	Upper Big Sandy Ground Water Management District	Upper Big Sandy Water Balance	Jan-08	\$45,000		\$45,000	Study/analysis of nonstructural activity	8000000100					Eric	Completed
Arkansas	Pueblo,Otero/ Crowley, Bent, Powers, Fremont, Chaffee, ElPaso, Kiowa	Southeastern Colorado Water Conservancy District	Model Transfers- Agriculture to Urban, Arkansas Basin Arkansas Headwaters Diversion Structure Improvement Project	Jan-08	\$23,860		\$23,860	Study/analysis of structural/nonstructural project	8000000135					Eric	Completed
Arkansas	Lake, Chaffee, Fremont	Greater Arkansas River Nature Association	Arkansas River Basin City of Las Animas Water System Improvements	Mar-08		\$57,955	\$57,955	Study/Analysis Consumptive and Non- Consumptive Project	9000000025				Closed 8/31/09	Ted Todd	Completed
Arkansas	Bent	City of Las Animas	City of Las Animas Water System Improvements Rotational Land Fallowing- Water Leasing Program -Lower	Mar-08	\$100,000	\$200,000	\$300,000	Structural/Non-Structural Water Activity	C150424	\$2,022,000		12/31/09	09/23/09	(Kirk?)	Completed
Arkansas	Pueblo, Otero, Crowley,Bent, Powers	Lower Arkansas Water Conservancy District	Arkansas Super Ditch Company	Jan-08	150,000		150,000	Study/analysis of nonstructural activity	C150425	\$68,735		06/30/10	05/15/10	Todd	Completed
Arkansas	Pueblo	Colorado State Parks	Colorado State Parks Zebra Mussel Response	Mar-08	0	\$1,000,000	1,000,000	Structural and Non- Structural water project	C150416	\$3,000,000		06/30/09	06/30/10	Todd	Completed
Arkansas Basin Total Request Number of Projects		11			\$583,781	\$1,307,955	\$1,891,736								
Colorado	Mesa	Bull Creek Reservoir Canal and Power Co.	Bull Creek Reservoir No. 5 Spillway Adequacy Analysis	Sept-07	50,000	\$0	50,000	Structural water activity-- Spillway adequacy study/environmental permitting	8000000039	\$0		06/30/10	02/25/09	Eric	Completed
Colorado	Eagle	Eagle Park Reservoir Company	Enlargement of Eagle Park Reservoir	Mar-07	\$0	\$250,000	\$250,000	Structural Project and Study-Technical Assistance	C150401	\$118,707		12/31/09	12/17/09	Eric	Completed
Colorado	Garfield, Pitkin, Gunnison, Eagle	Ruedi Water and Power Authority	Roaring Fork Watershed Assessment	Mar-07	\$40,000	\$0	\$40,000	Study or Analysis of Non- Consumptive Needs	8000000012					Chris	Completed
Colorado		Colorado River Water Conservation District	Upper Colorado Endangered Fish Recovery Alternatives Analysis (10,825)	Mar-07	\$0	\$200,000	\$200,000	Study or analysis of non- consumptive water activity	C150404			06/30/08	Closed	Todd	Completed
Colorado	Grand County	Grand County	Vail Ditch Project Feasibility and design assessment of off-channel reservoir sites in the Crystal River water shed	Mar-07	\$0	\$1,500,000	\$1,500,000	Structural and Nonstructural water activity	C150409			06/30/08	Closed	Closed?	Completed
Colorado	Garfield, Pitkin	West Divide WCD		Sep-08	\$40,000	\$0	\$40,000	Study/Analysis of consumptive project	9000000052			08/31/09	09/02/09	Mike	Completed
Colorado	Summit	Summit County	Old Dillon Reservoir	Mar-08	\$100,000	\$0	100,000	Study/Analysis of Non- consumptive needs/project	9000000026	\$49,360		06/30/09	03/02/10	Kirk	Completed
Colorado		Grand County	Grand County Stream flow Management Plan	May-08	\$100,000	\$0.00	100,000		C150461			06/30/11	12/16/10	Todd	Completed

Attachment 5

Colorado Basin Total Request											\$330,000	\$1,950,000	\$2,280,000		
Number of Projects											8				
Southwest		Goodman Point Water Association	Goodman Point Water Association Pipeline Environmental Assessment	Mar-07	\$7,700	\$0	\$7,700	Study of structural water project	8000000075		07/31/09	Eric	Completed		
Southwest		Mancos Water Conservancy District	Jackson Gulch Reservoir Expansion Project	July-07	\$61,735	\$0	\$61,735	Feasibility Study	8000000076		06/30/09	06/30/09	Todd	Completed	
Southwest		La Plata West Water Authority	La Plata West Rural Water Supply System	Mar-08	\$100,000	\$1,000,000	\$1,100,000	All purposes Environmental/Technical feasibility studies and studies or analysis of structural and/or non structural water project or activity	C150422		06/30/09		Todd (Kirk?)	Completed	
Southwest	La Plata/Archuleta	La Plata Archuleta Water District	Water System Master Planning	Nov-08	\$100,000	\$0	\$100,000	Structural water project or activity	9000000112	None	12/31/09	12/22/09	Eric	Completed	
Southwest	Archuleta	Park Ditch Company	Park Ditch Improvements Water System Well, Treatment System and Distribution Upgrades	Jul-09	\$85,000	\$0	\$85,000	Structural water project or activity	10000000011	\$132,375	06/30/11	12/09/09	Greg	Completed	
Southwest	La Plata	Happy Scenes	Town of Sawpit – Engineering/Planning for Domestic Water System; Southwest Basin	16-Sep-08	\$39,760	\$50,000	\$0	Structural Project	9000000127	\$87,100	06/30/10	11/17/09	Greg	Completed	
Southwest		Town of Sawpit		Mar-08	25,000	\$0	25,000	Study Structural Project	9000000006	\$6,700	06/30/09	06/07/10	Anna	Completed	
Southwest		Lower Blanco Property Owners Association	Lower Blanco River Restoration Project	Mar-09	100,000	\$0	100,000	Analysis and Construction of Structural Nonconsumptive Water Project	C150450	\$284,000	06/30/10	06/30/10	Greg	Completed	
Southwest		Summit Reservoir and Irrigation Company	MVIC Summit Irrigation Company feasibility study	Sep-08	39,300	\$0	39,300	Environmental/Technical feas. studies & studies/analysis of structural &/or non structural wtr project or activity	9000000085	\$0	08/31/10	08/31/10	Kirk	Completed	
Southwest		Lower Blanco River Restoration	Lower Blanco River Restoration Project	Sep-09	0	\$150,000	150,000	Structural and/or nonstructural water project or activity	C150468	\$0	06/30/12	12/17/10	Greg	Completed	
Southwest Basin Total Request					\$558,495	\$1,200,000	\$1,758,495								
Number of Projects											11				
Gunnison	Hinsdale	Upper Gunnison Water Conservancy District and Hinsdale County	Lake San Cristobal Controlled Outlet Structure	May-07	\$35,000	\$0	\$35,000	Technical assistance regarding permitting, feasibility studies, and environmental compliance	8000000021			Closed	Todd	Completed	
Gunnison	Delta	Town of Orchard City	Orchard City Water Reservoir Project (Task 1-3)	May-07	\$60,000	\$0	\$60,000	Study/Analysis	8000000007				Todd	Completed	
Gunnison	Delta	Town of Orchard City	Orchard City Water Reservoir Project (Remaining Tasks)	Sept-07	\$0	\$380,000	\$380,000	Study/Analysis	C150410		12/31/08	Closed	Todd	Completed	
Gunnison	Delta, Montrose, Ouray	Project 7 Water Authority and Uncompahgre Valley Water Users Association	Off-System Raw Water Storage Project 7 Water Authority/Uncompahgre Valley Water Users Association	Sept-07	\$56,700	\$0	\$56,700	Environmental Compliance and Feasibility Study	80000000059			Closed	Todd	Completed	
Gunnison	Gunnison	North Fork River Improvement Association	Paonia-Feldman Diversion Reconstruction; North Fork of the Gunnison River (Part 1 and 2)	Sept-07	\$48,000	\$62,700	\$110,700	Structural--development of construction plans and specifications for project	C150411		12/31/08	Closed	Todd	Completed	
Gunnison	Mesa	City of Grand Junction Water Enterprise Fund	Juniata Reservoir Spillway Modification	Mar-09	\$97,000	\$0	\$97,000	Structural Water Project Study or analysis of a structural water project or activity	9000000088	\$97,586	\$66,914	06/30/10	12/15/09	Jacob	Completed
Gunnison	Delta	Painted Sky Resource Conservation and Development Council, Inc.	Hartland Diversion Dam Fish Passage Feasibility Study	May-09	22,100	\$0	22,100		9000000144	\$1,000	06/30/10	01/25/10	Greg	Completed	
Gunnison Basin Total Request					\$318,800	\$442,700	\$761,500								
Number of Projects											7				

														Attachment 3	
Metro	Denver, Multiple	The Greenway Foundation	Chatfield Reallocation EIS/FR (South Platte BRT contributing \$27,000)	Mar-07	\$103,000	\$0	\$103,000	Study/Analysis of Structural Water Project						Chris	Completed
Metro	Douglas	East Cherry Creek Valley Water and Sanitation District	Zero Liquid Discharge Pilot Study	Sept-07	\$200,000	\$200,000	\$400,000	Study/Analysis	C150412			01/08/09		Eric	Completed
Metro	Logan	Parker Water and Sanitation District	Parker Water and San. And Colo. State University Joint Project on the Rural/Urban Farm Model	Sept-07	\$150,000	\$0	\$150,000	Study/Analysis	C150413			12/31/09	10/02/09	Todd	Completed
Metro	Multiple	CFWE	Solicitation of Stakeholder Input through a South Platte Edition of Headwaters	Jul-08	\$16,019	\$0	\$16,019	Non-structural water project or activity	9000000019					Todd	Completed
Metro	Douglas, Arapahoe	South Metro Water Supply Authority	South Metro Water Supply Authority - Regional Aquifer Supply Assessment	Jul-08	100,540	\$0	100,540	Study/analysis of structural project & consumptive project/activity	C150430	In-kind		12/31/09	12/31/10	Andy	Completed
Metro	Denver	Greenway Foundation	South Platte River Recreation and Habitat Feasibility Study	Sep-08	150,000	\$0	150,000	Study/analysis of structural, non structural, nonconsumptive water needs, projects	C150442	\$0			06/30/10	Chris	Completed
Metro	Park, Jeffco,CC, Gilpin	Clear Creek County on behalf of Upper Mountain Counties Water Needs Consortium	Upper Mountain Counties Water Needs Assessment	May 2008	43,587	\$0	43,587	Study/Analysis	C150429	\$8,070		06/30/11	12/31/10	Eric	Completed
Metro Basin Total Request					\$763,146	\$200,000	\$963,146								
Number of Projects		8													
North Platte		Silver Spur Operating CO.	New Pioneer Ditch Diversion Reconstruction Project	Mar-08	\$116,000	\$0	\$116,000	Structural/Non-Structural Water Activity	C150421			12/31/09		Chris	Completed
North Platte		CSU	Identification and assessment of important wetlands in N.P. River watershed	Sep-08	86,000	\$96,000	182,000	Studies or analysis of nonconsumptive water needs project or activity	C150433	\$10,000		06/30/10	06/30/10	Todd	Completed
N Platte Basin Total Request					\$202,000	\$96,000	\$298,000								
Number of Projects		2													
Rio Grande		Alamosa Riverkeepers	Alamosa River In-stream Flow Project	Mar-07	\$64,500	\$0	\$64,500	Study/Design for Structural Water Project	7000000076					Chris	Completed
Rio Grande		Colorado Rio Grande Restoration Foundation	Rio Grande Basin Conservation Reserve Enhancement Program	May-07	\$36,750	\$0	\$36,750	Non-structural water activity	8000000006			Closed		Todd	Completed
Rio Grande		San Luis Valley Resource Conservation and Development Council	Alamosa River Watershed Restoration Project	Sept-07	\$0	\$104,000	\$104,000	Non-structural water activity	C150419			Closed		Chris	Completed
Rio Grande		Romero Irrigation Company	Romero-Guadalupe Channel Rectification Project	Sept-07	\$83,700	\$0	\$83,700	Structural Water Project	8000000060			Closed		Eric	Completed
Rio Grande		Rio Grande Headwaters Land Trust	Rectification Project	Mar-08	\$200,000	\$1,300,000	\$1,500,000	Structural/Non-Structural Water Activity	C150420			Closed		Todd	Completed
Rio Grande	Conejos	El Codo Ditch Company	Rio Grande Initiative San Antonio River - El Codo Ditch Diversion and Rehabilitation	May-09	\$65,000	\$0	\$65,000	Structural and/or nonstructural water project or activity	1000000001	\$23,445		12/31/09	12/08/09	Greg	Completed
Rio Grande		Manassa Land and Irrigation Company	Conejos River and North Branch Diversion and Stabilization	Sep-08	50,000	\$333,700	383,700	Structural and/or nonstructural water project or activity	C150446	\$98,000		06/30/10		Chris S	Completed
Rio Grande		San Luis Valley Irrigation District	Preliminary Design Multi-use Rio Grande Reservoir Rehabilitation and Enlargement	Mar-07	0	\$288,000	288,000	Study/Design for Structural Water Project	C150402	\$0		06/30/10	06/30/10	Kirk	Completed
Rio Grande		Conejos Water Conservancy District	Platoro Reservoir Restoration	Sep-08	50,000	\$200,000	250,000	Structural and/or nonstructural water project or activity	C150448	\$250,000		06/30/11	02/03/11	Kirk	Completed
RGrande Basin Total Request					\$549,950	\$2,225,700	\$2,775,650								
Number of Projects		9													
South Platte		The Greenway Foundation	Chatfield Reallocation EIS/FR (Metro BRT contributing \$103,000)	Mar-07	\$27,000	\$0	\$27,000	Study/Analysis of Structural Water Project						Todd /Tom	Completed

South Platte	Clear Creek County	Clear Creek Water Banking/High Altitude Storage Solicitation of Stakeholder Input through a South Platte Edition of Headwaters Lower South Platte Wetland Initiative Phase I	May-07	\$52,000	\$0	\$52,000	Environmental Compliance/Feasibility Study	8000000037			Closed	Eric	Completed
South Platte	Colorado Foundation for Water Education	Upper Mountain Counties Water Needs Assessment	Jul-08	\$16,019	\$0	\$16,019	Non-structural water project or activity	9000000019				Todd	Completed
South Platte	Ducks Unlimited, Inc. Clear Creek County on behalf of Upper Mountain Counties Water Needs Consortium	South Platte River, CO	Sept-07	\$0	\$278,476	278,476	Specifies all eligible activities	C150415	\$500,255			Todd	Completed
South Platte		Upper Mountain Counties Water Needs Assessment	May 2008	130,763	\$0	130,763	Study/Analysis Environmental compliance/Tech. Assist./Studies or analysis of structural, nonstructural, consumptive, nonconsumptive wtr needs projects	C150429	See Metro	06/30/10	12/31/10	Eric	Completed
South Platte	City of Greeley	Halligan Seaman Water Mgmt project share vision planning model	Sep-08	25,435	\$76,305	101,740		C150436	\$271,109	06/30/10	06/30/10	Eric	Completed
South Platte South Platte Basin Total Request				\$251,217	\$354,781	\$605,998							
Number of Projects	6												
Y/W/G	Upper Yampa Water Conservancy District	Morrison Creek Reservoir Feasibility Study	July-07	49,500	\$0	49,500	Feasibility Study	8000000058	\$0	03/31/08	02/25/10	Todd	Completed
Y/W/G	Vermillion Ranch	Sparks Reservoir	Jul-08	16,000	\$0	16,000	Study/Analysis of Consumptive Activity/Project	9000000039	\$3,000	12/31/08	02/25/10	Todd	Completed
Y/W/G	Colorado Foundation for Water Education	Headwaters Magazine - January 2010	Sep-09	20,000	\$0	20,000	Study or analysis of structural, non structural, consumptive, and nonconsumptive water needs and projects	10000000050	\$22,938	06/30/10	05/17/10	Jacob	Completed
Y/W/G	Community Agriculture Alliance, Inc.	Development and Implementation of Water Forums, Workshop, and/or Tours	Sep-09	10,000	\$0	10,000	Study or analysis of structural, non structural, consumptive, water needs and projects	10000000046	\$2,675	06/30/11	12/31/10	Jacob	Completed
YWG	City of Steamboat Springs and Routt County	Common Data Repository	Jan-08	106,600	\$0	106,600	Study or analysis of consumptive/ nonconsumptive needs	C150423	\$50,000	6/31/10	12/31/10	Todd	Completed
YWG	Moffat County	Agricultural Water Needs Assessment	Jan-08	201,410	\$0	201,410	Study or analysis of structural/nonstructural and consumptive/ nonconsumptive needs	C150418	\$0	12/31/10	12/31/10	Eric	Completed
Y/W/G Basin Total Request	6			403,510	\$0	\$403,510							
Water Supply Reserve Account Total Requests				\$3,960,899	\$7,777,136	\$11,738,035							

COLORADO WATER CONSERVATION BOARD
Water Supply Reserve Account - Balance Summary
February 2011

Fund Appropriation and Receipts				
Fiscal Year	Legislative Appropriation	Funds Received	Statewide Account	Basin Account
2006/2007	\$10,000,000	\$10,000,000	\$5,500,000	\$4,500,000
2007/2008	\$6,000,000	\$6,000,000	\$4,200,000	\$1,800,000
2008/2009	\$10,000,000	\$7,000,000	\$4,300,000	\$2,700,000
2009/2010	\$5,775,000	\$5,775,000	\$4,215,750	\$1,559,250
2010/2011	\$6,000,000	\$4,200,000	\$3,066,000	\$1,134,000
TOTAL	\$37,775,000	\$32,975,000	\$21,281,750	\$11,693,250

Note: The WSRA is a Severance Tax "Tier II" program with 40% of funds distributed on July 1, 30% on January 1, and the final 30% on April 1.

In FY 2008/2009 the final 30% installment of \$3,000,000 was not received due to the State's budgetary shortfall.

For FY 2010/2011 the first installment of 40% was received on July 1, resulting in \$1,752,000 for the Statewide Account and \$72,000 for each Basin Account. The second installment of 30% was received on January 1, resulting in \$1,314,000 for the Statewide Account and an additional \$54,000 for each Basin Account.

Fund Distribution					
Basin	Approved Basin Grants	Total Basin Funds	Basin Account Balance	Approved State Grants	Statewide Account Balance
Arkansas	\$1,151,756	\$1,299,250	\$147,494	\$2,809,620	
Colorado	\$950,171	\$1,299,250	\$349,079	\$2,402,900	
Southwest	\$1,183,946	\$1,299,250	\$115,304	\$3,790,000	
Gunnison	\$938,665	\$1,299,250	\$360,585	\$861,660	
Metro	\$1,056,229	\$1,299,250	\$243,021	\$1,818,125	
North Platte	\$919,755	\$1,299,250	\$379,495	\$311,027	
Rio Grande	\$1,150,450	\$1,299,250	\$148,800	\$2,961,400	
South Platte	\$1,113,857	\$1,299,250	\$185,393	\$2,213,423	
Yampa/White	\$1,073,374	\$1,299,250	\$225,876	\$259,813	
TOTAL	\$9,538,203	\$11,693,250	\$2,155,047	\$17,427,968	\$3,853,782
TOTAL APPROVED GRANTS					\$26,966,171

Note: Only includes grants approved by CWCBC

House Bill 10-1051

Covered Entities' Water Efficiency Reporting



Background

In 2010, the Colorado General Assembly adopted HB10-1051 which requires covered entities¹ to report, on an annual basis, water use and conservation data to be used for statewide water supply planning. The bill directs the Colorado Water Conservation Board (CWCB or Board) to adopt guidelines regarding the reporting of water use and conservation data by covered entities (Guidelines), and to report to the legislature regarding the Guidelines.

The reporting Guidelines will be adopted through the Board's public participation process, including outreach to stakeholders from water providers with geographic and demographic diversity, nongovernmental organizations, and water conservation professionals.

The reporting Guidelines must include clear descriptions of customer categories, uses, and measurements; how the Guidelines will be implemented; and how data will be reported to the Board.

House Bill 10-1051 requires the following actions be completed no later than the indicated dates:

February 1, 2012

Board adopts Guidelines and reports to legislature regarding the Guidelines.

June 30, 2014 through June 1, 2020

Annual covered entity reporting for the previous calendar year.

February 1, 2019

Board reports to legislature on the Guidelines and data collected under the Guidelines.

July 1, 2020

Legislation sunsets.

Goals

Statewide water supply planning efforts rely on statewide water use and water conservation data. An example of an ongoing statewide planning effort that relies on this type of data is the Statewide Water Supply Initiative (SWSI), which utilizes future statewide water demand projections with-and-without various levels of municipal and industrial water conservation. The CWCB also supports statewide water supply planning through providing technical and financial assistance to covered entities seeking to develop and update water conservation and drought plans, and producing technical resources such as best practices guidebooks. Improved water use and water conservation data will also inform CWCB budget and funding initiatives to support local water conservation planning efforts.

Data reported under HB10-1051 will further support statewide water supply planning efforts by improving the quantity and quality of data available and improving consistency in the data reporting. The goal is to produce reporting Guidelines that result in data that is useful toward statewide water supply planning, while also limiting the level of effort required for the covered entities in the reporting process. This balance will be achieved by developing the Guidelines through a robust public participation process, and will be further assisted through the CWCB producing tools such as the Basin Needs Decision Support System to further streamline the reporting process.

Contact Information:

Veva Deheza
Colorado Water Conservation Board
Office of Water Conservation &
Drought Planning

1313 Sherman St., Rm. 721

Denver, Colorado 80203

P: 303-866-3226

E: veva.deheza@state.co.us

www.cwcb.state.co.us

¹ Per Section 37-60-126(1)(b), Colorado Revised Statutes (C.R.S.), "Covered entity" means each municipality, agency, utility, including any privately owned utility, or other publicly owned entity with a legal obligation to supply, distribute, or otherwise provide water at retail to domestic, commercial, industrial, or public facility customers, and that has a total demand for such customers of two thousand acre-feet or more.

House Bill 10-1051

Covered Entities' Water Efficiency Reporting



Process for Developing the Reporting Guidelines

HB10-1051 directs the Board to develop reporting Guidelines through a public participation process that includes outreach to stakeholders from water providers with geographic and demographic diversity, nongovernmental organizations, and water conservation professionals. To satisfy this condition and produce Guidelines that are both practical to implement and result in useful data, the CWCB has developed multiple opportunities for public input:

- **Technical Advisory Group** – A working group that provides recommendations and advises on development of the specific data requirements and definitions included in the Guidelines. The group is focused on technical issues, to ensure the usefulness of the data for statewide water supply planning. This group is committed to meeting monthly (by phone or in person) through February 2012 or until the Board adopts the Guidelines. Draft Guidelines and supporting documents will be reviewed each month, requiring an estimated total of up to 10 hours per month for attending meetings and providing input on draft documents. Ad hoc advisory committees may be formed as needed to assist in advancing specific topics within the legislative mandated schedule.
- **Stakeholder Advisory Group** – This group expands the perspective to provide recommendations focused on the practicality of implementing the Guidelines. The group is committed to meeting at least twice (by phone or in person) and providing review and comment on at least two draft Guidelines through February 2012, requiring an estimated total of 10 hours. All covered entities are encouraged to participate.
- **Public Participation** – Following development of the draft Guidelines through the Technical and Stakeholder Advisory Group process, the CWCB will provide a full public review of the 1st Draft Guidelines presented to the Board. Public comments will be provided to the Board and considered in the 2nd Draft provided to the Board.
- **CWCB Board** – The Board will receive at least two draft Guidelines, with the 2nd Draft incorporating public input and Board feedback.

2011/2012 Schedule and Benchmarks

DATE	GROUP	OBJECTIVE/BENCHMARK
Feb 23, 2011	Technical Advisory Group	Begin defining data recommendations
Mar 23, 2011	Technical Advisory Group	Refine data needs and specific definitions
Apr 27, 2011	Technical Advisory Group	Review draft Guidelines/provide recommendations
May 25, 2011	Stakeholder & Technical Advisory Groups	Review draft Guidelines/provide recommendations
Jun 22, 2011	Technical Advisory Group	Refine data needs and specific definitions
July 27, 2011	Stakeholder & Technical Advisory Groups	Review draft Guidelines/provide recommendations
Aug 24, 2011	Technical Advisory Group	Review draft Guidelines/provide recommendations
Aug 30 to Oct 14, 2011	Public Review Period	Public input
Sep 13-14, 2011	CWCB Board Meeting	1 st Draft Guidelines review
Sep 28, 2011	Technical Advisory Group	Identify Guideline changes needed
Oct 25, 2011	Technical Advisory Group	Review draft Guidelines/provide recommendations
Nov 15-16, 2011	CWCB Board Meeting	2 nd Draft Guidelines review; adopt Guidelines
Jan/Feb 2012	CWCB Board/Staff	Report to legislature

Meeting Times and Locations:

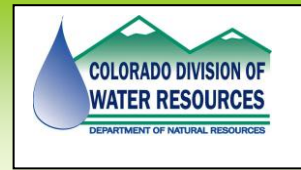
Technical Advisory Group meetings from 1 to 4 pm Mountain, locations TBD

Stakeholder Advisory Committee meeting times/locations TBD

CWCB Board Meetings:

September – Grand Junction, CO

November – Denver, CO



FEBRUARY 2011 DROUGHT UPDATE

Water Availability Task Force Co-Chairs

Veva Deheza, CWCB - 303-866-3441 ext. 3226
Email – veva.deheza@state.co.us

Kevin Rein, DWR - 303-866-3581 ext. 8239
Email – kevin.rein@state.co.us

Executive Summary

La Niña conditions continue to persist, influencing Colorado weather with above average moisture in the northern mountains. The southern portion of the state has seen a drop in precipitation over the last month and conditions in the region will be closely monitored over the coming weeks for deteriorating conditions. Statewide reservoir storage remains strong and water providers continue to be in a “wait and see” mode. The next 2-3 months will give a better indication of what conditions can be expected throughout the spring and early irrigation season.

- The eastern plains of Colorado have received below normal precipitation since the beginning of the water year in October 2010. Although recent storms have brought some moisture, overall precipitation remains below average.
- The basins in the southwest corner of the state: the San Miguel, Dolores, Animas, and San Juan, received heavy snowfall in late December but have received well below average precipitation in January and February. While the basin remains near normal for the water year, this is largely skewed due to well above average precipitation prior to the New Year. This region will continue to be closely monitored for deteriorating conditions in the coming weeks.
- Statewide snowpack has decreased slightly since January 1 but remains above average at 116%. Five of eight basins are above 100% of average. The North Platte has the highest percent snowpack at 131% of average; the Colorado, Gunnison, Yampa/White and South Platte sit at 127%, 120%, 124%, and 122% of average, respectively. The basins in the southwest corner of the state: the San Miguel, Dolores, Animas, and San Juan, and the Arkansas basin are all near normal at 100% and 105% of average respectively. The Rio Grande basin has fallen below normal at 86%.
- According to the U.S. Drought Monitor, 58% of the state is now experiencing D0, D1 or D2 status, which represents abnormally dry, drought moderate and drought severe conditions respectively. The drought conditions that have covered the eastern plains of the state throughout the fall have continued to deteriorate with D0, D1 and D2 covering much of Colorado east of the divide. A small portion of Huerfano County has recently experienced moisture that has brought some relief from the D2 conditions. However this region is still experiencing D1 conditions.
- The February 1st traditional SWSI values¹ range from +0.1 in the San Miguel/Dolores/Animas/ San Juan Basin to +2.9 in the South Platte Basin. All other basin show positive values. The traditional SWSI values are partly influenced by reservoir storage and may not fully represent conditions in the region.
- The revised SWSI values for the west slope,² which rely on stream flow forecasts and a smaller spatial scale, show a range of values -0.08 in the southwestern part of the states to +2.63 in the Yampa/ White river basin and represent near normal to abundant supplies.

¹ Traditional SWSI values are based on streamflow, reservoir storage and precipitation for the summer period (May-October). The values range from a high of +4.0, which indicates an abundant supply to a low of -4.0, which indicates severe drought. A value of 0.0 indicates a near normal supply. Traditional SWSI values will be presented alongside the Revised SWSI as the transition to the new calculation is completed.

² Colorado was the first state to develop a methodology for calculating the Surface Water Supply Index (SWSI) in the 1980's but in the early 1990s the Natural Resource Conservation Service (NRCS) refined the SWSI calculation to address the subjectivity of the original computation. The use of streamflow forecasts in the NRCS updated SWSI is an objective, statistical assessment of the data relating to snowmelt runoff. Additionally, the revised methodology provides a more stable month to month transition and utilizes a higher spatial resolution improving from four digit hydrologic units (seven values statewide) to eight digit hydrologic units (37 values statewide). This shift enables more detailed evaluation of the regions that are most effected by drought at any given time. The revised SWSI calculations are now available for western Colorado and will be presented in drought updates. Statewide figures will be available on a monthly basis beginning in the spring 2011, when the State of Colorado will fully adopt the new methodology. The scale of +4.0, which indicates an abundant supply to a low of -4.0, which indicates severe drought will remain the same.

FEBRUARY 2011 DROUGHT UPDATE

U.S. Drought Monitor

February 15, 2011

Valid 7 a.m. EST

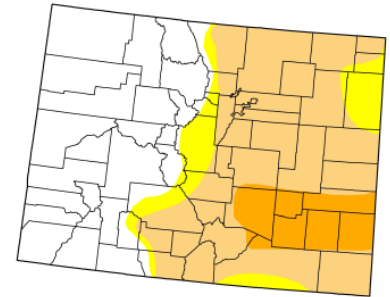
Colorado

Drought Conditions (Percent Area)

	None	D0-D4	D1-D4	D2-D4	D3-D4	D4
Current	41.65	58.35	49.57	8.93	0.00	0.00
Last Week (02/08/2011 map)	41.65	58.35	49.57	10.13	0.00	0.00
3 Months Ago (11/16/2010 map)	30.29	69.71	38.67	0.00	0.00	0.00
Start of Calendar Year (12/28/2010 map)	40.40	59.60	49.57	10.13	0.00	0.00
Start of Water Year (09/26/2010 map)	28.86	71.14	10.70	0.00	0.00	0.00
One Year Ago (02/09/2010 map)	68.18	31.82	0.00	0.00	0.00	0.00

Intensity:

D0 Abnormally Dry	D3 Drought - Extreme
D1 Drought - Moderate	D4 Drought - Exceptional
D2 Drought - Severe	

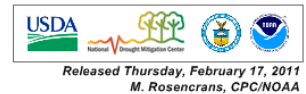


The adjacent map shows the U.S. Drought Monitor for Colorado as of February 15, 2011. The plains region of Colorado continues to experience sustained D0- D1(abnormally dry – drought severe) drought conditions for the eleventh month in a row, with D2 conditions continuing in portions of Bent, Huerfano and Pueblo counties for the third month.

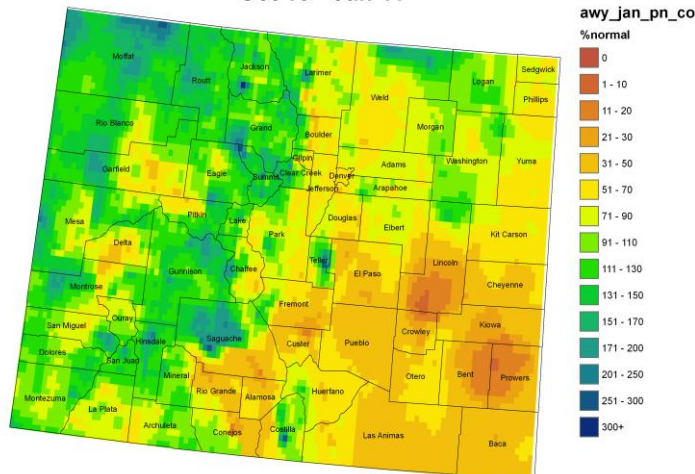
The experimental long term forecast calls for continued dry conditions across much of Colorado through June. The northwest corner of the State continues to have the best chance for average or above average precipitation.

The Drought Monitor focuses on broad-scale conditions. Local conditions may vary. See accompanying text summary for forecast statements.

<http://drought.unl.edu/dm>



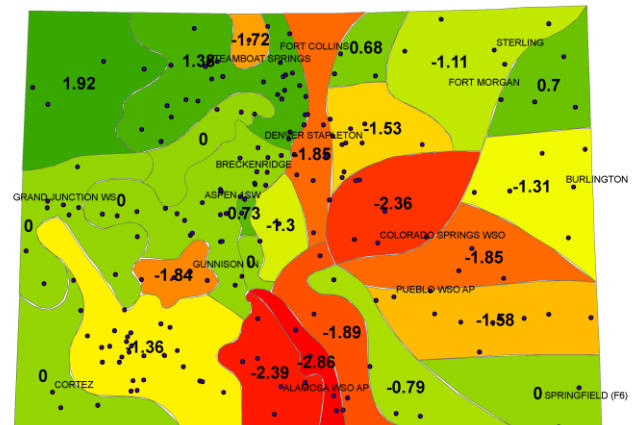
Colorado Water Year 2011 Precipitation as Percentage of Normal Oct 10 - Jan 11



The adjacent map shows precipitation for the water year thus far (October 2010- January 2011). The eastern plains of Colorado, which have seen below average precipitation this water year, are well below normal. Continued monitoring of this region will be critical as irrigation season approaches.

The state map to the left shows the Modified Palmer Drought Severity Index (MPDSI). It illustrates the dryness that is impacting the eastern plains and Rio Grande river basin. The Rio Grande ranges between -2.39 and -2.86, the driest in the state. PMDI of -2.0 to -2.99 reflects moderate drought. The Rio Grande and the San Luis Valley received near or below normal precipitation in January and is now below normal for the water year. Snowpack in the Rio Grande is currently 80% of average. This is an area that will be monitored closely for deteriorating conditions in the coming weeks.

Modified Palmer Drought Severity Index for Colorado January 2011



NOTE:

The next WATF meeting is scheduled for March 17, 9:30-11:30am.

April's WATF meeting is scheduled for April 14, 9:30-11:30am.

All meetings will be held at the Colorado Division of Wildlife, 6060 Broadway, Denver.

COLORADO WATER CONSERVATION BOARD

FINANCIAL ACTIVITY REPORT

FOR FISCAL YEAR 2011

CONSTRUCTION FUND

Period	Principal	Interest	Total Received	Disbursements	Net Activity
July 2010	\$ 1,018,821	\$ 828,872	\$ 1,847,693	\$ 10,030	\$ 1,837,663
August 2010	\$ 357,433	\$ 299,564	\$ 656,997	\$ 560,834	\$ 96,163
September 2010	\$ 372,148	\$ 321,220	\$ 693,368	\$ 423,703	\$ 269,666
October 2010	\$ 211,181	\$ 313,430	\$ 524,611	\$ 1,446,480	\$ (921,869)
November 2010	\$ 147,737	\$ 121,412	\$ 269,149	\$ 1,276,830	\$ (1,007,680)
December 2010	\$ 606,520	\$ 1,461,575	\$ 2,068,095	\$ 1,342,006	\$ 726,089
January 2011	\$ 154,449	\$ 70,221	\$ 224,671	\$ 1,102,003	\$ (877,332)
February 2011	\$ 165,183	\$ 113,443	\$ 278,625	\$ 618,472	\$ (339,847)
March 2011	\$ -	\$ -	\$ -	\$ -	\$ -
April 2011	\$ -	\$ -	\$ -	\$ -	\$ -
May 2011	\$ -	\$ -	\$ -	\$ -	\$ -
June 2011	\$ -	\$ -	\$ -	\$ -	\$ -
FY 2011 Totals	\$ 3,033,472	\$ 3,529,738	\$ 6,563,210	\$ 6,780,357	\$ (217,147)

SEVERANCE TAX TRUST FUND PERPETUAL BASE ACCOUNT

Period	Principal	Interest	Total Received	Disbursements	Net Activity
July 2010	\$ 85,256	\$ 130,515	\$ 215,771	\$ 12,199,749	\$ (11,983,978)
August 2010	\$ 173,293	\$ 126,076	\$ 299,369	\$ 105,572	\$ 193,797
September 2010	\$ 465,534	\$ 543,964	\$ 1,009,498	\$ 151,578	\$ 857,920
October 2010	\$ 66,510	\$ 255,872	\$ 322,382	\$ 715,865	\$ (393,483)
November 2010	\$ 125,494	\$ 100,390	\$ 225,884	\$ 254,425	\$ (28,541)
December 2010	\$ 430,179	\$ 783,953	\$ 1,214,132	\$ 618,051	\$ 596,081
January 2011	\$ 37,939	\$ 22,235	\$ 60,174	\$ 431,096	\$ (370,922)
February 2011	\$ 58,820	\$ 116,315	\$ 175,135	\$ 1,457,798	\$ (1,282,663)
March 2011	\$ -	\$ -	\$ -	\$ -	\$ -
April 2011	\$ -	\$ -	\$ -	\$ -	\$ -
May 2011	\$ -	\$ -	\$ -	\$ -	\$ -
June 2011	\$ -	\$ -	\$ -	\$ -	\$ -
FY 2011 Totals	\$ 1,443,024	\$ 2,079,321	\$ 3,522,345	\$ 15,934,134	\$ (12,411,789)
GRAND TOTALS	\$ 4,476,497	\$ 5,609,059	\$ 10,085,556	\$ 22,714,491	\$ (12,628,936)



DIETZE AND DAVIS, P.C.

ATTORNEYS AT LAW
Established in 1972

Peter C. Dietze
Robyn W. Kube
Karl F. Kumli, III*
David J. Thrower
Joel C. Maguire
Renée Ezer*
Stephen A. Closky
Star L. Waring
Tucker M. Katz
Care Enichen

Siena Square Building
2060 Broadway, Suite 400
Boulder, Colorado 80302
Telephone (303) 447-1375
Fax (303) 440-9036
www.dietzedavis.com

Email: karlk@dietzedavis.com

Joshua E. Anderson
Mark D. Detsky

Of Counsel:
Joel C. Davis
Carmen S. Danielson

**Also admitted in California*

February 9, 2011

Linda Bassi, Esq.
Section Chief
Stream & Lake Protection Section
Colorado Water Conservation Board
1313 Sherman Street, Room 721
Denver, CO 80203

Re: City of Aspen, Castle Creek Hydroelectric Project

Dear Linda:

This letter is to confirm in writing the representation I made to the Board and to you on January 26, 2011, as part of my presentation on the Castle Creek Hydroelectric Project. I wish to confirm that City of Aspen will include in its FERC application for approval of the project the following two unequivocal statements:

The Colorado Water Conservation Board is not a "municipality" under Colorado state law.

A Colorado instream flow right is not a "consumptive water right" under Colorado state law.

If you have any question whatsoever, please do not hesitate to contact me directly.

Sincerely,

DIETZE AND DAVIS, P.C.

Karl F. Kumli, III

Special Counsel for City of Aspen, Colorado

Letter to Linda Bassi, Esq.
January 12, 2011
Page 2

Attachment 10

c: David Hornbacher, City of Aspen
Phil Overeynder, City of Aspen
Cynthia Covell, Esq.

Table 3
Late Summer and Fall Reservoir Operation Statistics for 2010

Reservoir	Decreed Capacity (acre-feet)	Pools/Releases Managed by HUP Managing Entities & Water Managers	Volumes (acre-feet)	Releases that Benefitted 15 MR (acre-feet)
Green Mountain Reservoir	154,645	Historic User's Pool (HUP) ¹	66,000	
		Release to HUP Beneficiaries	1,016	
		Release for Cameo Call	393	
		Surplus Released		57,813
		Remaining HUP Allocation on Nov. 1	6,778	
Ruedi Reservoir	102,369	Endangered Fish Firm Commitment	5,000	
		Endangered Fish 4-out-of-5 Yr Commitment	5,000	
		Mitigation Water	10,825	
		Total Dedicated for Endangered Fish	20,825	
		Released for Endangered Fish		20,825
		Remaining Fish Allocation on Nov. 1	0	
Wolford Mountain Reservoir	65,993	Endangered Fish Pool	6,000	
		West Slope Mitigation Water	5,412	
		Released for Endangered Fish		8,412
		Remaining Fish Pool Storage on Nov. 1	3,000	
Williams Fork Reservoir	93,637	East Slope Mitigation Water	5,412	
		Released for Endangered Fish		5,412
		Remaining Fish Pool Storage on Nov. 1	0	
Granby Reservoir		Windy Gap Release under Agreement		5,113
		Total Releases that Directly or Indirectly Benefitted the 15-Mile Reach Flows		97,575

¹ HUP is the term commonly applied to the releases from the Green Mountain Reservoir Power Pool pursuant to paragraph 2 of the 1984 Green Mountain Reservoir Operating Policy.

FIGURE 5
EFFECT OF LATE IRRIGATION SEASON RESERVOIR RELEASES ON FLOW IN THE 15-MILE REACH
(As Measured at the Colorado River at Palisade Gage)
2010 LATE SUMMER/FALL

