

Rio Grande Inter-Basin Roundtable
c/o San Luis Valley Water Conservancy District
415 San Juan Avenue
Alamosa, Colorado 81101
Telephone: (719) 589 – 2230
Email: slvwcdco1@qwest.net

November 23, 2010

To the Attention of: Mr. Todd Doherty, Intrastate Water Management & Development
Colorado Water Conservation Board

RE: Proposal for ***THE McDONALD DITCH AND PLAZA PROJECT : PHASE I – PLANNING***

Dear Mr. Doherty:

The Rio Grande Inter-Basin Roundtable (RGRT) has determined that the single, most critical water issue confronting the Rio Grande Basin is the current unsustainable management of surface and ground water. Thus, the RGRT has made the decision that water activities that address this issue be favorably considered for funding from the Water Supply Reserve Account, SB 2005 -179, providing that the proposed water activities meet the SWSI findings for the Basin and the CWCB and IBCC Criteria and Guidelines for funding.

At the regular RGRT meeting on November 9, 2010, as Vice Chair of the RGRT, I chaired the portion of the meeting in which a request was considered from the Colorado Rio Grande Restoration Foundation (Foundation) for funding *The McDonald Ditch & Plaza Project Phase 1- Planning (Plaza Project – Phase I)*. I assumed the role of Chair for this vote, as Mike Gibson, Chair of the RGRT, is also the Secretary / Treasurer of the Colorado Rio Grande Restoration Foundation, the entity representing the joint applicant of the McDonald Ditch Company and the Rio Grande Headwaters Restoration Project (RGHRP).

At the meeting on November 9, 2010, the members of the Rio Grande InterBasin Roundtable voted unanimously to recommend funding for the *Plaza Project – Phase I* with Rio Grande Basin Funds in the requested amount of \$40,000.00.

The total cost of *Plaza Project – Phase I*, Rio Grande County, Colorado, is estimated at \$90,000.00. The RGRT is requesting authorization and consideration for distribution of funds pursuant to SB 2005 -179, for Basin Funds of \$40,000.00. The balance of the required funds will come from contributions from the McDonald Ditch Company and other ditch companies associated with the project of \$7,000.00, and in-kind Engineering Services from the NRCS of \$36,200.00 as outlined in the proposal budget.

The *Plaza Project – Phase I* is a 5-month analysis of design, engineering, and implementation options to restore historical functions of the 2.8 mile reach of the Rio Grande at Sevenmile Plaza, including the diversions of the McDonald, Silva, Atencio, and Prairie Ditches.

This *Plaza Project – Phase I* represents a milestone as it is the first real opportunity for the RGHRP to work directly with ditch companies. It is anticipated that this project will lead to

further collaboration between the RGHRP and the over 40 ditch companies on the Rio Grande.

The subsequent *The McDonald Ditch & Plaza Project – Phase II* will involve further delineation and engineering of the findings of Phase I and the implementation of those findings.

Plaza Project – Phase I - in the Context of Prior Studies:

In 2001 a study was completed, sponsored by the San Luis Valley Water Conservancy District and funded through a \$200,000.00 CWCB grant. This study covered 91 miles of the Rio Grande from South Fork to the Alamosa / Conejos County line. This is the reach of the river in Colorado most impacted by human intervention, including the operation of some 49 diversion structures, and the development of many riverside properties. The 2001 Study assessed conditions in terms of the following criteria:

- Provide access to the river for agricultural water diversions.
- Maintain and restore riparian habitat wherever possible.
- Protect lives and property.
- Ensure deliveries of Rio Grande Compact obligations.
- Protect channel and flood plain from flood damage.
- Maintain channel and over bank capacity.

In 2004, the RGHRP received an EPA 319 Non – Point Source grant to work with NRCS to perform riparian restoration on properties of 17 landowners in Rio Grande County, Colorado. In 2007 the *Rio Grande Headwaters Restoration Strategic Plan*, was completed. This *Strategic Plan* was partially funded through the Colorado Watershed Protection Fund and severance taxes, administered by CWCB, and an EPA 319 Watershed Planning grant. During this time the RGHRP has also engaged in education and outreach to landowners, county officials and the general public.

Since 2004 the RGHRP has received additional Colorado Non-Point Source grants for Phase 3 and Phase 4 for this work, both of which were matched with WWSRA grant monies. These Phases will result in over \$900,000.00 of riparian stabilization being completed on the Rio Grande. In 2009, the RGHRP was awarded a Natural Resources Conservation Service (NRCS) Cooperative Conservation Partnership Initiative (CCPI) grant of \$390,000.00, and in 2010 the RGHRP was awarded a NRCS Colorado Partnership Program (CPP) grant of \$250,000.00. These grants are being matched through the RGHRP with monies from the Rio Grande Water Conservation District and previously awarded WWSRA funds. Both the CCPI & CPP grants have allowed the NRCS to work with private landowners (17) to implement riparian stabilization on their properties.

Plaza Project – Phase I - Landowners, Ditch Companies and Water Rights:

Landowners in the Sevenmile Plaza area on the Rio Grande, in Rio Grande County, Colorado, represent some of the most senior water rights in Colorado, dating back to 1866 and the first application of water in District Number 20. Over the years, six generations have accessed Rio Grande water for irrigation, wildlife habitat, ranching and recreation.

The *Plaza Project – Phase I* will identify and analyze available resources and create the Plaza Plan to improve the capability of the McDonald, Silva, Atencio and Prairie diversions, and to fulfill the following historical functions: (1) Improve access to the river for water diversion; (2) protect channel and floodplain from damage by flooding; (3) maintain riparian habitat; (4) deliver Rio Grande Compact commitments; and (5) maintain channel capacity and overbank capacity. The analysis will determine the best approaches for meeting Rio Grande Compact deliveries and satisfying the priority water rights system in ways that also improve river function and avoid adverse impacts. Supported by the NRCS design and engineering, some additional geomorphic and micro-hydroelectric engineering data will be developed as potential options for the McDonald, Silva, Atencio, and Prairie diversions which lie in Reach C of the 2001 Study.

The *Plaza Project – Phase I* will yield a deeper understanding of the historical, socio-cultural, and contemporary events that may have affected or which could in the future affect the Rio Grande corridor and riparian areas at this location. Such data will inform the technical analyses involved in meeting the five key functions described above and will help the partners gain a deeper understanding of local considerations, contributions, or limitations affecting the Phase II implementation of the Phase I findings.

On behalf of the RGRT Members, we appreciate the Board's consideration of this request and urge your support to the fullest extent possible.

By this letter, I am forwarding the application and supporting materials for the ***THE McDONALD DITCH AND PLAZA PROJECT : PHASE I – PLANNING*** project. If you require additional information, please contact me or the project proponents as needed.

We in the Rio Grande Basin greatly appreciate the ongoing support of the Department of Natural Resources, the Colorado Water Conservation Board and the Interbasin Compact Commission in meeting the needs of all users of Colorado's water and in fostering intrabasin and interbasin communications and discussions. We believe that the above project will assist in this effort.

Sincerely,

A handwritten signature in cursive script that reads "Rio de la Vista".

Rio de la Vista
Vice-Chair, Rio Grande Inter-Basin Roundtable
Direct contact: riovista@rmi.net Cell: 719-850-2255

Enclosures (1)

C: Rio Grande Headwaters Restoration Project w/encs.
McDonald Ditch Company w/encs.

Water Supply Reserve Account – Grant Application Form
Form Revised March 2009

COLORADO WATER CONSERVATION BOARD

**WATER SUPPLY RESERVE ACCOUNT
GRANT APPLICATION FORM**



***THE McDONALD DITCH AND PLAZA PROJECT – PHASE I – PLANNING –
RIO GRANDE INTERBASIN ROUNDTABLE***

Name of Water Activity/Project

Approving Basin Roundtable

\$40,000.00

Amount from Statewide Account

\$0

Total Amount of Funds Requested

Amount from Basin Account

\$40,000.00

Application Content

Application Instructions	page 2
Part A – Description of the Applicant	page 4
Part B – Description of the Water Activity	page 7
Part C – Threshold and Evaluation Criteria	page 8
Part D – Required Supporting Material	
Water Rights, Availability, and Sustainability	page 11
Related Studies	page 12
Statement of Work, Detailed Budget, and Project Schedule	page 15
Signature Page	page 30

Attachments

1. Reference Information
2. Insurance Requirements (Projects Over \$25,000)
3. WSRA Standard Contract (Projects Over \$100,000)
4. W-9 Form (Required for All Projects)

Water Supply Reserve Account – Grant Application Form

Form Revised March 2009

Instructions

To receive funding from the Water Supply Reserve Account (WSRA), a proposed water activity must be approved by the local Basin Roundtable AND the Colorado Water Conservation Board (CWCB). The process for Basin Roundtable consideration/approval is outlined in Attachment 1.

Once approved by the local Basin Roundtable, the applicant should submit this application, a detailed statement of work, detailed project budget, and project schedule to the CWCB staff by the application deadline.

The application deadlines are:

- Basin Account – 60 calendar days prior to the bi-monthly Board meeting
- Statewide Account – 60 calendar days prior to the September Board meeting

Board Meeting Dates	Basin Account Deadlines	Statewide Account Deadlines
July 20-21, 2010	May 21, 2010	n/a
September 21-22	July 23, 2010	July 23, 2010
November 16-17	September 17, 2010	n/a
January 2011	60 days prior	n/a
March 2011	60 days prior	n/a
May 2011	60 days prior	n/a
July 2011	60 days prior	n/a
September 2011	60 days prior	60 days prior

When completing this application, the applicant should refer to the WSRA Criteria and Guidelines available at: <http://cwcb.state.co.us/IWMD>.

The application, statement of work, budget, and schedule must be submitted in electronic format (Microsoft Word or text-enabled PDF are preferred) and can be emailed or mailed on a disk to:

Mr. Todd Doherty
Colorado Water Conservation Board
Water Supply Planning Section
WSRA Application
1580 Logan Street, Suite 200
Denver, CO 80203
Todd.Doherty@state.co.us

If you have questions or need additional assistance, please contact Todd Doherty of the Water Supply Planning Section at 303-866-3441 x3210 or todd.doherty@state.co.us.

Water Supply Reserve Account – Grant Application Form
Form Revised March 2009

Part A. - Description of the Applicant (Project Sponsor or Owner);

1.	Applicant Name(s):	The Colorado Rio Grande Restoration Foundation and McDonald Ditch Company	
	Mailing address:	c/o James Hart, President McDonald Ditch Company 2483 N. US Hwy 285 Monte Vista, CO 81144	c/o Steve Russell, Chairman Colo. Rio Grande Restoration Fdtn. 415 San Juan Avenue Alamosa, CO 81101
	Taxpayer ID#:	75-3169057	Email address: james@hartfarmsinc.com srussellco@msn.com
	Phone Numbers: Business:	719-588-1284	
	Home:	719-587-3342	
	Fax:		

2. Person to contact regarding this application if different

Name :	Mike Gibson 719-589-3230
Position/Title	Secretary/Treasurer, Colorado Rio Grande Restoration Foundation

3. Eligible entities that may apply for grants from the WSRA include the following. What type of entity is the Applicant?

- ☐ Public (Government) – municipalities, enterprises, counties, and State of Colorado agencies. Federal agencies are encouraged to work with local entities and the local entity should be the grant recipient. Federal agencies are eligible, but only if they can make a compelling case for why a local partner cannot be the grant recipient.
- ☐ Public (Districts) – special, water and sanitation, conservancy, conservation, irrigation, or water activity enterprises.
- ☒ Private Incorporated – mutual ditch companies, homeowners associations, corporations.
- ☐ Private individuals, partnerships, and sole proprietors are eligible for funding from the Basin Accounts but not for funding from the Statewide Account.
- ☒ Non-governmental organizations – broadly defined as any organization that is not part of the government.

Water Supply Reserve Account – Grant Application Form

Form Revised March 2009

4. Provide a brief description of your organization

This project, ***THE McDONALD DITCH AND PLAZA PROJECT – PHASE I – PLANNING (PLAZA PROJECT – PHASE I)***, will be administered through a partnership between the board of the Colorado Rio Grande Restoration Foundation (the Foundation) and the McDonald Ditch Company (McDD). This collaboration is herein referred to as the Partnership.

Co-Applicant: The McDonald Ditch Company -- In 1866 the first application of water in District Number 20 was made at the Valdez Plaza, which later became known as Sevenmile Plaza. Farming in the area began following the construction of the Silva, Atencio, and Lucero irrigation ditches which diverted water from the Rio Grande just east of present-day Del Norte. The McDonald Ditch Company was incorporated as a mutual irrigation ditch company on December 17, 1921, and on May 23, 1950 the company's corporate existence was extended to perpetuity.

The McDonald Ditch diverts approximately 4,500 acre feet of water from the Rio Grande at a point commonly known as the Sevenmile Plaza Bridge, which is 7 miles north and 5 miles west of the town of Monte Vista. Monte Vista is in the heart of the farming area of Rio Grande County, with the McDonald Ditch Diversion located in "Reach C" of the 91-mile long Rio Grande 2001 Study area, as defined by the Rio Grande Headwaters Restoration Project (RGHRP). The irrigation system is approximately 2.5 miles long, and consists of nine landowners irrigating approximately 1,320 acres. Each of the nine shareholders holds assessments at \$500.00 per share. The water right consists of 14.4 c.f.s., with a river priority number 11 on 13.4 c.f.s., and number 18 on 1.0 c.f.s.. Due to high priority of the water right, water is accessible throughout the irrigation season.

Despite the pressures of farming in the San Luis Valley's 90-day growing season and long cold winters, all members participate in maintaining the ditch year round. Assessments are dedicated to irrigation system maintenance, with no hired clerical or administrative staff. McDonald Ditch Company does not, by itself, have the resources to undertake a major channel stabilization and diversion rehabilitation project on the Rio Grande. This proposal is therefore jointly submitted by McDD and The Colorado Rio Grande Restoration Foundation, the fiscal agent for RGHRP.

Co-Applicant: The Colorado Rio Grande Restoration Foundation -- The Colorado Rio Grande Restoration Foundation (the Foundation) is a 501 (c) (3) Colorado non-profit corporation. The following Board of Directors governs the Foundation: Steve Russell, President; Karla Shriver, Vice-President; Michael Gibson, Secretary/Treasurer; Doug Messick, Member; Greg Higel, Member; Cathy Morin, Member; and Rich Davie, Member. The Foundation is the fiscal agent for the Rio Grande Headwaters Restoration Project (RGHRP), which was formed to implement the recommendations of a study done in 2001 (The 2001 Study) to analyze the condition of the river. The 2001 Study was prompted by a group of citizens who were concerned that the river had been impaired. Sponsored by the San Luis Valley Water Conservancy District and funded by the Colorado Water Conservation Board, the 2001 Study analyzed 91 miles of the Rio Grande, determined causes of deterioration in river function, and made recommendations to improve the river's functions. The RGHRP is charged with implementing the recommendations developed through of the 2001 Study.

Water Supply Reserve Account – Grant Application Form

Form Revised March 2009

The mission of the Rio Grande Headwaters Restoration Project is “...to restore and conserve the historical functions and vitality of the Rio Grande in Colorado for improved water quality, optimal agricultural water use, riparian habitat, wildlife and aquatic species habitat, recreation, and community safety, while meeting the requirements of the Rio Grande Compact.”

5. If the Contracting Entity is different then the Applicant (Project Sponsor or Owner) please describe the Contracting Entity here.

The Contracting Entity is The Colorado Rio Grande Restoration Foundation as fiscal agent for the Rio Grande Headwaters Restoration Project, working in partnership with the McDonald Ditch Company.

6. Successful applicants will have to execute a contract with the CWCB prior to beginning work on the portion of the project funded by the WSRA grant. In order to expedite the contracting process the CWCB has established a standard contract with provisions the applicant must adhere to. A copy of this standard contract is included in Attachment 3. Please review this contract and check the appropriate box.

☒ The Applicant will be able to contract with the CWCB using the Standard Contract

☐ The Applicant has reviewed the standard contract and has some questions/issues/concerns. Please be aware that any deviation from the standard contract could result in a significant delay between grant approval and the funds being available.

7. The Tax Payer Bill of Rights (TABOR) may limit the amount of grant money an entity can receive. Please describe any relevant TABOR issues that may affect the applicant.

The Co-Applicants, the McDonald Ditch Company and the Colorado Rio Grande Restoration Foundation, are not subject to TABOR.

Water Supply Reserve Account – Grant Application Form
Form Revised March 2009

Part –. - Description of the Water Activity

1. Name of the Water Activity/Project:

THE McDONALD DITCH AND PLAZA PROJECT – PHASE I – PLANNING

2. What is the purpose of this grant application? (Please check all that apply.)

☐

Environmental compliance and feasibility study

☐

Technical Assistance regarding permitting, feasibility studies, and environmental compliance

☒

Studies or analysis of structural, nonstructural, consumptive, nonconsumptive water needs, projects

Study or Analysis of:

☒

Structural project or activity

☒

Nonstructural project or activity

☒

Consumptive project or activity

☒

Nonconsumptive project or activity

☐

Structural and/ or nonstructural water project or activity

Water Supply Reserve Account – Grant Application Form

Form Revised March 2009

3. Please provide an overview/summary of the proposed water activity (no more than one page). Include a description of the overall water activity and specifically what the WSRA funding will be used for.

Overall water activity: The Plaza Project is a two phase Project where functional and environmental issues will be identified and addressed on four ditch companies' headgates and the riparian areas within a 2.8 mile stretch of the Rio Grande near the Sevenmile Plaza in Rio Grande County, CO. According to the RGHRP 2001 Study, this area is within Reach C, which ranks "poorest" in channel stability and condition of the floodplain and was identified as high priority for restoration (see "Exhibit 8 Subreach Rating Criteria"). The channel of the area is greatly impacted by structures and land use activities. Specifically, piers and concrete rubble from the old Sevenmile Plaza Bridge were left in the channel to form part of the McDD diversion, obstructing flood flows, causing channel movement and instability, and negatively impacting downstream reaches. Furthermore, other nearby diversions have been identified as vulnerable to sediment buildup and as contributing to streambank instability. The two Phases of the Plaza Project are Phase 1: Planning and Phase 2: Project Design and Implementation. This application is seeking funds for Phase 1: Plaza Planning Project (Planning Project), through which a scoping and feasibility study will be completed.

The Plaza Project – Phase I is a 5-month collaborative analysis of potential restoration and structural approaches to rehabilitate the McDonald, Silva, Atencio, and Prairie ditch diversions and to address riparian degradation in approximately 2.8 miles of the Sevenmile Plaza reach of the Rio Grande. Conducted as a scoping and feasibility study, the Plaza Project – Phase I will gather stakeholders and analyze options available to meet the needs of the four ditch companies, while improving the condition and function of the riparian areas, bends, and main channel of the Rio Grande in this reach. The Planning Project will first determine how to integrate the rehabilitation of the McDonald Ditch Diversion with the multiple objectives of the 2001 Study, the restoration of the neighboring Silva, Atencio, and Prairie diversions, the stabilization of the surrounding riparian areas, and the best available science. The Plaza Project – Phase I will produce the Plaza Plan for implementation in Phase II, which may include replacing headgates, integrating micro-hydro power, restoring riparian areas, and stabilizing the main channel. The Plan will align future actions with the interests of landowners and residents in one of Colorado's oldest communities, identifying and addressing the multiple objectives of stakeholders on the river.

Use of funds: The Partnership is requesting \$40,000 to conduct the Plaza Project - Phase I. These funds will be used to hire a Project Coordinator (Coordinator), to compensate RGHRP for its labor and direct costs, and to contract geomorphic and micro-hydropower engineering expertise. It is anticipated the NRCS will perform all necessary engineering and design associated with the Phase I - Planning and Phase II. Working for the Partnership, the Coordinator will organize the collaboration of stakeholders and facilitate communication between a diverse mix of governmental and community entities. The Coordinator will help to create "The Plaza Stakeholders" as a vital advisory arm to the Partnership, enabling the Phase I – Planning to meet multiple objectives and to address the diverse consumptive and nonconsumptive needs in this 2.8 mile reach of the Rio Grande.

Deliverables: The Plaza Project -Phase I will create the Plaza Plan, which will include the final design and implementation plan for the McDonald Ditch Diversion and preliminary designs for the other defined elements. It will address multiple objectives in the 2001 Study, seek matching funds, and pursue supplemental grant funding for Phase II, ensuring the long-term capability to monitor and administer these projects and promoting the values of conservation and good river stewardship.

Part C. – Threshold and Evaluation Criteria

1. Describe how the water activity meets these **Threshold Criteria**. (Detailed in Part 3 of the Water Supply

Water Supply Reserve Account – Grant Application Form

Form Revised March 2009

Reserve Account Criteria and Guidelines.)

a) The water activity is consistent with Section 37-75-102 Colorado Revised Statutes.¹

- This proposal is eligible for funding under Senate Bill 06-179 because 1) it is being submitted for approval to the Rio Grande Interbasin Roundtable pursuant to article 75 of title 37, C.R.S.. This water activity will take place in the Rio Grande Basin; 2) it meets the eligibility categories described below; and 3) this proposal is submitted for approved by the Rio Grande Interbasin Roundtable in conformity with criteria and guidelines jointly developed by the IBCC and CWCB.
- This water activity meets the eligibility requirements as required in Part 2 of the criteria and guidelines as detailed above.
- The water activity is consistent with Section 37-75-102 C.R.S. because it funds a study and planning process to restore, repair, and upgrade existing channel courses, structures, and riparian areas in a 2-mile reach of the Rio Grande. Performing this Study does not supersede, abrogate, or otherwise impair the State's current system of allocating water within Colorado nor does it in any manner repeal or amend the existing water rights adjudication system. This Project does not affect the State Constitution's recognition of water rights as a private usufructuary property right nor is it intended to restrict the ability of the holder of a water right to use or to dispose of that water right in any manner permitted under Colorado law. This study will produce a Plan to restore and stabilize the diversions, including the McDonald Ditch, riparian areas, and the main channel at Sevenmile Plaza. By extending this Study to nearby diversions, this study will establish a Plan to improve the floodplain, increase irrigation efficiency, protect downstream water rights from damage by flood, and support Colorado's continuing ability to meet its Rio Grande Compact obligations.

¹ 37-75-102. Water rights - protections. (1) It is the policy of the General Assembly that the current system of allocating water within Colorado shall not be superseded, abrogated, or otherwise impaired by this article. Nothing in this article shall be interpreted to repeal or in any manner amend the existing water rights adjudication system. The General Assembly affirms the state constitution's recognition of water rights as a private usufructuary property right, and this article is not intended to restrict the ability of the holder of a water right to use or to dispose of that water right in any manner permitted under Colorado law. (2) The General Assembly affirms the protections for contractual and property rights recognized by the contract and takings protections under the state constitution and related statutes. This article shall not be implemented in any way that would diminish, impair, or cause injury to any property or contractual right created by intergovernmental agreements, contracts, stipulations among parties to water cases, terms and conditions in water decrees, or any other similar document related to the allocation or use of water. This article shall not be construed to supersede, abrogate, or cause injury to vested water rights or decreed conditional water rights. The General Assembly affirms that this article does not impair, limit, or otherwise affect the rights of persons or entities to enter into agreements, contracts, or memoranda of understanding with other persons or entities relating to the appropriation, movement, or use of water under other provisions of law.

Water Supply Reserve Account – Grant Application Form

Form Revised March 2009

- b) The water activity underwent an evaluation and approval process and was approved by the Basin Roundtable (BRT) and the application includes a description of the results of the BRTs evaluation and approval of the activity. At a minimum, the description must include the level of agreement reached by the roundtable, including any minority opinion(s) if there was not general agreement for the activity. The description must also include reasons why general agreement was not reached (if it was not), including who opposed the activity and why they opposed it. Note- If this information is included in the letter from the roundtable chair simply reference that letter.

Please refer to the letter from the Rio Grande Basin Vice-Chair, Ms. Rio de la Vista.

- c) The water activity meets the provisions of Section 37-75-104(2), Colorado Revised Statutes.² The Basin Roundtable Chairs shall include in their approval letters for particular WSRA grant applications a description of how the water activity will assist in meeting the water supply needs identified in the basin roundtable's consumptive and/or non-consumptive needs assessments.

Please refer to the letter from the Rio Grande Basin Vice-Chair, Ms. Rio de la Vista.

² 37-75-104 (2)(c). Using data and information from the Statewide Water Supply Initiative and other appropriate sources and in cooperation with the on-going Statewide Water Supply Initiative, develop a basin-wide consumptive and nonconsumptive water supply needs assessment, conduct an analysis of available unappropriated waters within the basin, and propose projects or methods, both structural and nonstructural, for meeting those needs and utilizing those unappropriated waters where appropriate. Basin Roundtables shall actively seek the input and advice of affected local governments, water providers, and other interested stakeholders and persons in establishing its needs assessment, and shall propose projects or methods for meeting those needs. Recommendations from this assessment shall be forwarded to the Interbasin Compact Committee and other basin roundtables for analysis and consideration after the General Assembly has approved the Interbasin Compact Charter.

Water Supply Reserve Account – Grant Application Form

Form Revised March 2009

- d) Matching Requirement: For requests from the Statewide Fund, the applicants is required to demonstrate a 20 percent (or greater) match of the request from the Statewide Account. Sources of matching funds include but are not limited to Basin Funds, in-kind services, funding from other sources, and/or direct cash match. Past expenditures directly related to the project may be considered as matching funds if the expenditures occurred within 9 months of the date the application was submitted to the CWCBC. Please describe the source(s) of matching funds. (NOTE: These matching funds should also be reflected in your Detailed Budget in Part D of this application)

This request seeks only Rio Grande Basin Account Funds for Phase I – a 5-month study and planning process.

2. For Applications that include a request for funds from the Statewide Account, describe how the water activity meets the **Evaluation Criteria**. (Detailed in Part 3 of the Water Supply Reserve Account Criteria and Guidelines.)

This request seeks only Rio Grande Basin Account Funds for Phase I – a 5-month study and planning process.

Part D. – Required Supporting Material

1. Water Rights, Availability, and Sustainability

This information is needed to assess the viability of the water project or activity. Please provide a description of the water supply source to be utilized, or the water body to be affected by, the water activity. This should include a description of applicable water rights and the name/location of water bodies affected by the water activity.

Water and Supply Source: The subject of the Plaza Project – Phase 1 is identified in the 2001 Study of the RGHRP as Reach C of the Rio Grande, which includes the area between the Del Norte split flow convergence and the Consolidated Slough. The full study area of the RGHRP includes approximately 91 miles of the Rio Grande from the upstream town limits of South Fork to the Alamosa/Conejos county line, and encompasses the river corridor in all of Alamosa County and most of Rio Grande County. The river passes through the municipalities of South Fork, Del Norte, Monte Vista and Alamosa, affecting portions of the Rio Grande and Higel State Wildlife Areas and portions of the Alamosa National Wildlife Refuge. The division of the 2001 Study area into several reaches was based on homogeneous characteristics related to hydrology, floodplain width, river geomorphology, and vegetative conditions. The Planning Project's first priority is to complete the McDonald Ditch Diversion Plan (the McDD Plan), which the Partnership anticipates can be accomplished in the first two months of this study. Plans for the Silva, Atencio and Prairie diversions and for other elements in this reach (the Plaza Plan) will follow, with data developed in the course of the Planning Project. McDonald Ditch diverts approximately 4,500 acre feet of water from the Rio Grande at a point commonly known as the Sevenmile Plaza Bridge, which is 7 miles north and 5 miles west of the town of Monte Vista.

Water rights and flow management: Landowners in the Sevenmile Plaza area represent some of the most senior water rights in Colorado, dating back to 1866 and the first application of water in District Number 20. Over the years, six generations of people have accessed the *Rio Bravo del Norte* at Sevenmile Plaza. The Rio Grande in this reach is primarily used for irrigation, wildlife habitat, ranching and recreation. The Plaza Project- Phase I will identify and analyze available resources and create the Plaza Plan to improve the capability of the McDonald, Silva, Atencio and Prairie diversions to fulfill the following historical functions: (1) Maintain channel capacity and overbank capacity; (2) protect channel and floodplain from damage by flooding; (3) maintain riparian habitat; (4) deliver Rio Grande Compact commitments; and (5) improve access to the river for water diversion. The analysis will determine the best approaches for meeting Rio Grande Compact deliveries and satisfying the priority water rights system in ways that improve river function and avoid adverse impacts. Strongly supported by the Natural Resources Conservation Service (NRCS) design and engineering, some additional geomorphic and micro-hydroelectric engineering data will be developed as potential options for the McDonald, Silva, Atencio, and Prairie diversions on Reach C of the Rio Grande. The Plaza Project – Phase I will yield a deeper understanding of the historical, socio-cultural, and contemporary events that may have affected or which could in the future affect the Rio Grande corridor and riparian areas at this location. Such data will inform the technical analyses involved in meeting the five key functions described above and will help the Partnership gain a deeper understanding of local considerations, contributions, or limitations affecting the Phase II restoration effort.

Water Supply Reserve Account – Grant Application Form

Form Revised March 2009

2. Please provide a brief narrative of any related or relevant previous studies.

The Context of Previous Studies: The driving purpose of Plaza Project – Phase I is first to relate the restoration of the McDonald Ditch Diversion to the broader context of the Rio Grande and to similar irrigation and maintenance issues faced by neighboring diversions, and to ensure the Planning Project addresses the multiple objectives identified in the 2001 Study. Previous studies and projects, described below, plus new data and wisdom gathered through this participative process, will create guidelines for the Plaza Project - Phase 1 and for the Phase II implementation of the Plaza Project.

Previous studies and projects of the RGHRP provide vital lessons and help identify critical resources for these very small ditch companies, which have no budget for such an ambitious undertaking. Complex diversion and restoration projects such as the proposed Phase II Projects are far beyond their scope, yet it is vital for these irrigators to eliminate the designation of “poorest condition” for channel stability and floodplain in this Reach C of the Rio Grande. The Plaza Project - Phase 1, goes a long way to support the Rio Grande Interbasin Roundtable’s primary objective of the Basin having sustainable water resources through improved water management techniques.

Previous studies will guide the restoration of the McDonald, Silva, Atencio, and Prairie diversions and riparian areas in Reach C, providing current and historical aerial photography, hydrology data on daily flows, peak discharges, and Rio Grande Compact requirements, floodplain reports and maps, bridge inspection reports, and existing geographic information system (GIS) data for land use, soil type, vegetation characteristics, property ownership, and topography. In addition, the Coordinator will gather data not necessarily available in written form, including local knowledge which goes back six generations of water use. Through planning for the restoration of all the diversions and creating the development of the Plaza Plan, RGHRP will gain buy-in from the wider watershed community, and foster public understanding. This is an opportunity to encourage environmental literacy and to greatly assist the Rio Grande Basin Roundtable to quantify consumptive and nonconsumptive needs in the Basin. McDonald Ditch is proud to have this opportunity to lead the way, to work in such a rich environment, and to add its experience to the body of knowledge developed in previous projects of RGHRP.

The 2001 Study: Established as described on page 5 above, the 2001 Study determined that the deterioration in water quality and fishery conditions on the Rio Grande was due to increased sediment loading. This was caused by unstable stream banks, which resulted from deteriorated conditions of the riparian zone and changing river flow patterns. From the 2001 Study, recommendations were developed to improve the river’s functions and basic guidelines for restoration work were established. These included employing a multi-faceted approach using proven techniques such as bioengineering, installation of rock and wooden structures, revegetation, construction of bank-full benches, and implementation of grazing best management practices. This Plaza Project - Phase 1 will utilize information from the 2001 Study along with current data to determine the most appropriate methods of action, including the possibility of incorporating more aesthetic approaches such as using rock structures rather than the usual monolithic concrete dam and investigating the possible applications of low-flow micro-hydropower generation.

The 2007 Strategic Plan: In 2004 the need was identified for a well-defined Rio Grande Watershed

Water Supply Reserve Account – Grant Application Form

Form Revised March 2009

Restoration Strategic Plan. Completed in 2007, the Strategic Plan highlighted the importance of continued efforts to implement the recommendations from the 2001 Study. Numerous projects have already been completed by the RGHRP in cooperation with local, state, and federal stakeholders, improving river function by applying a multi-faceted approach to riparian stabilization. In 2004, through partnerships with the NRCS, the RGHRP completed a cost-share riparian stabilization project with funding from the Colorado Non-Point Source Program. The 2004 Riparian Stabilization Project – Phase 2 involved 17 private landowners on approximately 8,300 feet of stream bank on the Rio Grande in Rio Grande County, Colorado. Matching funds came from the Environmental Quality Incentive Program (EQIP), the Colorado Division of Wildlife (CDOW) Colorado Habitat Improvement Program (CHIP), and the landowners. The total expenditure on these riparian stabilization projects was \$397,000.

A McDD study dated May 21, 1974 entitled “R.C.&.D. Measure Plan” was conducted to install a concrete weir, a 2’ poured concrete Parshall flume, and to line 5,300 feet of the main canal with concrete. That study contains data pertinent specifically to the 1974 project.

The Planning Project will apply the lessons from previous studies with the premise that its function, in part, is to “enable, facilitate, coordinate, and ensure that all technical, scientific, and engineering resources ... benefit from a consistent approach to the restoration work on all reaches of the Rio Grande.” (RGHRP - Stabilization Project Phase 4).

3. Statement of Work, Detailed Budget, and Project Schedule

The statement of work will form the basis for the contract between the Applicant and the State of Colorado. In short, the Applicant is agreeing to undertake the work for the compensation outlined in the statement of work and budget, and in return, the State of Colorado is receiving the deliverables/products specified. Please note that costs incurred prior to execution of a contract or purchase order are not subject to reimbursement.

Please provide a detailed statement of work using the following template. Additional sections or modifications may be included as necessary. Please define all acronyms. If a grant is awarded an independent statement of work document will be required with correct page numbers.

(Next page)

Statement of Work

WATER ACTIVITY NAME – *THE McDONALD DITCH AND PLAZA PROJECT – PHASE I – PLANNING.*

GRANT RECIPIENT – Colorado Rio Grande Restoration Foundation

FUNDING SOURCE – Rio Grande Basin Roundtable, SB179 WSRA, Basin Account Funds.

INTRODUCTION AND BACKGROUND

Provide a brief description of the project. (Please limit to no more than 200 words; this will be used to inform reviewers and the public about your proposal)

The Plaza Project – Phase 1 is a 5-month analysis of design, engineering, and implementation options to restore historical functions of the 2.6-mile reach of the Rio Grande at Sevenmile Plaza. Co-applicants (the Partnership) are the McDonald Ditch Company (McDD) and the Colorado Rio Grande Restoration Foundation (CRGRF), the fiscal agent for the Rio Grande Headwaters Restoration Project (RGHRP). Basin funds of \$40,000 will hire a Project Coordinator, additional engineering services, and cover RGHRP's direct costs. The RGHRP's 2001 Study ranked Reach C, including the McDonald, Silva, Atencio and Prairie diversions, as "poorest" in terms of channel stability and floodplain condition. McDD, with a small budget and no paid staff, lacks the capacity to undertake an analysis of this magnitude. Plaza Stakeholders, advising and collaborating with the Partnership, will analyze all four diversions and the riparian areas of Reach C to create the Plaza Plan as the best way to improve irrigation, stabilize the channel and riparian areas, and restore floodplain function. The Plaza Project - Phase 1 will tap RGHRP management's technical, scientific, ecological, and environmental resources to mitigate the causes of deterioration in river function in this approximately 2.8 mile reach of the Rio Grande in preparation for Phase II implementation of the Plaza Plan.

OBJECTIVES

1. Administrative & Financial: Provide administrative support:

- a. For McDD to restore its diversion
- b. For creating the Plaza Plan for restoring the Silva, Atencio, and Prairie diversions
- c. To hire a Project Coordinator
- d. To secure additional geomorphology and micro-hydropower engineering services.

2. Structural: Conduct Phase I to determine best approach in Phase II to:

- a. Restore the original designed efficiency of the McDD irrigation system and eliminate high maintenance.
- b. Ameliorate or cure the causes of deterioration in function of this reach of the Rio Grande
- c. Improve the function of the flood plain for downstream communities.

3. Technical: Facilitate and Coordinate multiple objectives

- a. Determine impacts of annual diversion and canal maintenance on river and downstream reaches;
- b. Establish or predict the impact of future channel changes on the structure itself;
- c. Identify opportunities to combine structures and establish permanent points of diversion;
- d. Identify solutions to minimize irrigation O&M costs and reduce damage to the river system; and
- e. Reduce the sources of sediment by riparian restoration.

4. Environmental: Interface the Project with the Restoration Goals of the Strategic Plan as follows:

Water Supply Reserve Account – Grant Application Form

Form Revised March 2009

-
- a. **Water Quality:*** Maintain or improve stream water quality on the Rio Grande to protect beneficial uses designated by the State of Colorado as appropriate to this reach of the river.
 - b. **Diversion Structures:*** Improve the function and reliability of the McDonald, Silva, and Prairie diversions to improve irrigation water deliveries with consideration for riparian health, fisheries, and recreational opportunities.
 - c. **Floodplain:*** Protect the channel and 100-year floodplain from flood damage, such that existing structures are protected and all new development and redevelopment is constructed to avoid adverse impacts to 100-year floodplain functions and values.
 - d. **Recreation:*** Maintain or enhance river function to support recreational opportunities associated with the Rio Grande and its tributaries, for the benefit of local businesses, residents, and tourists.
 - e. **Synergy:*** Complement efforts of public agencies and community watershed groups that support the objectives of the Strategic Plan.
 - f. **Funding:*** Seek funding sources from state and federal agencies, nonprofit and community organizations, businesses, and individuals to implement the priority projects.
-

In Recognition: Ten years later, with some members gone from us forever, and in appreciation for their work, the Partnership recognizes the following individuals who served on the RGHRP 2001 Study TAC: Mike Blakeman, U.S. Forest Service, Landowner; Mike Blenden, U.S. Fish and Wildlife Service; Doug Davie, Silva Ditch, Landowner; Allen Davey, Davis Engineering; Kate Booth Doyle, San Luis Valley Ecosystem Council/Rio Bravo Coalition; Brian Hyde, Colorado Water Conservation Board; Dennis Felmlee, San Luis Valley Water Conservancy District; Robert Felmlee, San Luis Valley Water Conservancy District; Jeff Johnson, Colorado Division of Wildlife; Pete Magee, SLV GIS/GPS Authority; D.H. McFadden, Geological Consultant, Retired Division Engineer; Doug Messick, San Luis Valley Water Conservancy District; Randall Palmgren, San Luis Valley Water Conservancy District; Steve Russell, Natural Resources Conservation Service; Doug Shriver, Centennial Ditch; Steve Vandiver, Division Engineer; and Ray Wright, Rio Grande Water Conservation District.

TASKS – (next page)

TASK 1 – Notice to Commence & Coordination of Stakeholders

Description of Task

This task will create the **Plaza Project Stakeholder Partners (Plaza Stakeholders)** to augment and advise the Partnership between McDD and the RGHRP, ensuring participation and coordination of stakeholders in the Plaza Project. The Partnership will follow models established in the 2001 Study, in which a Technical Advisory Committee (TAC) provided assistance, guidance, and review of the work.

Plaza Stakeholders will make strategic planning decisions. They will meet monthly, and can be called to meet more frequently as required, to review and discuss intermediate Planning Project deliverables at key Project milestones. **Securing good will** in the affected communities is an important objective of the Planning Project.

Notice to Proceed establishes start date for the Plaza Planning Project
Working protocols set up for office use, communication
Identify Plaza Stakeholders
Hold the first of five Plaza Stakeholder meetings
Information: Mission, goals, objectives outlined
Information: Scope of work and Project milestones established
Information: McDD preliminary engineering reviewed
Information: McDD diversion placed in context of larger framework
Partnership establishes community awareness and support

Method/Procedure

1. Foundation receives Notice to Proceed from CWCB
2. Foundation executes CWCB Purchase Order and Coordinator Contract
3. RGHRP and Coordinator identify, contact and recruit Plaza Stakeholders (see map below)
4. Coordinator organizes first of five monthly meetings of Plaza Stakeholders
 - Communicate “Information” items above
 - Review of NRCS preliminary studies
5. Coordinator creates a web-based password-accessed collaborative editing/working resource/tool
6. Coordinator visits with government entities and interested people in the Sevenmile Plaza area

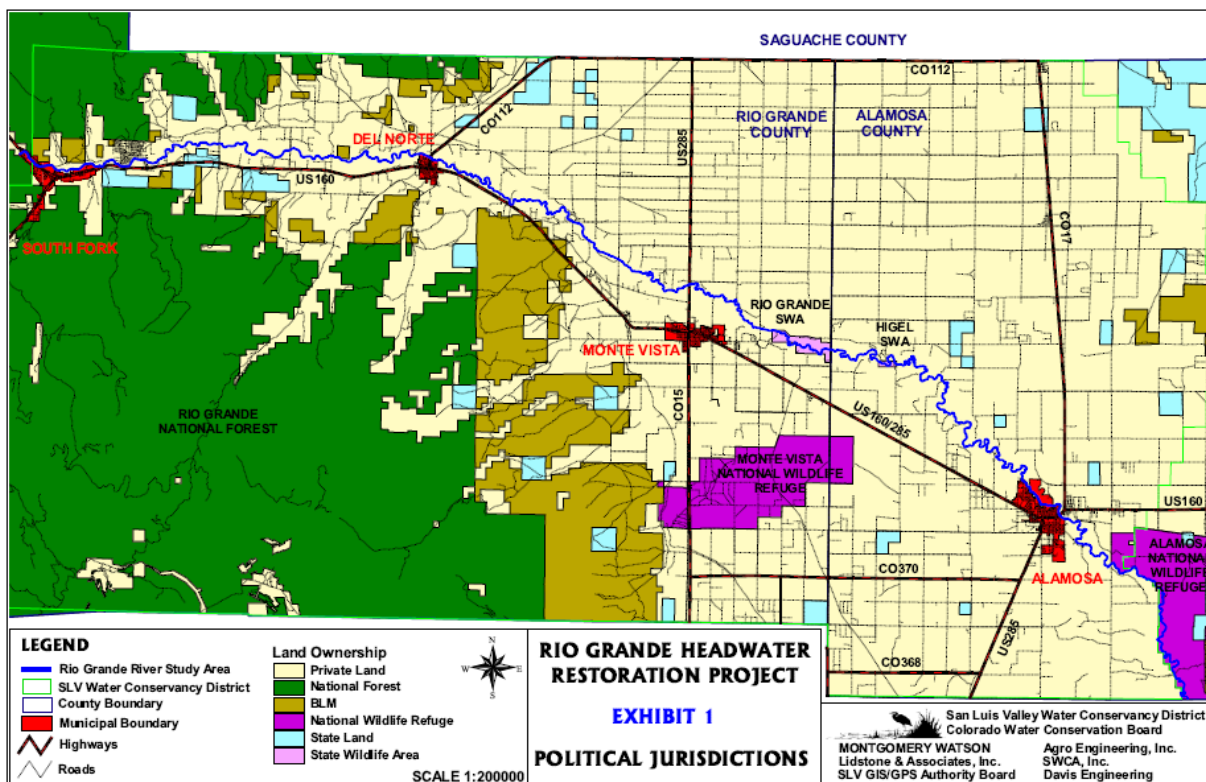
Selection Process: Political entities are shown on the map below. Participants invited to be Plaza Stakeholders will include, but will not be limited to, the municipalities of Del Norte and Monte Vista; the Rio Grande National Forest; the San Luis Valley Water Conservancy District; the Bureau of Land Management; the US Corps of Engineers; the San Luis Valley Area Wetlands Focus Group; The Rio Grande Headwaters Land Trust; the Monte Vista National Wildlife Refuge; Alamosa National Wildlife Refuge; the Rio Grande State Wildlife Area; Rio Grande County; Alamosa County; and private land owners in the vicinity of Sevenmile Plaza.

Water Supply Reserve Account – Grant Application Form

Form Revised March 2009

Selection Process special focus on riparian areas and wildlife: Of special interest are the riparian areas adjacent to the McDonald Ditch Diversion where limited historical overbank flows have been, to a certain extent, beneficial. However, recent human activities, including trash dumping and the use of heavy equipment, have exacerbated damage to this area. The Colorado Division of Wildlife will be an important Partner/Stakeholder. Community and land owner awareness and municipal/county participation are needed to remediate these effects and to restore riparian habitat.

POLITICAL JURISDICTIONS



Deliverable

Notice to Proceed is in place; Coordinator is hired; Plaza Partnership is in place; Role of Plaza Stakeholders is defined; first information meeting is held, bringing all onto the same page; technology for a web-based common working area is in place to facilitate collaboration; the Partnership has the benefit of technical, environmental, scientific, and strategic input from many stakeholders, representing multiple objectives.

Special focus on wetlands and wildlife gives CDOW an important role in the Planning Project, and the need to address nonconsumptive needs begins to be communicated to affected communities.

TASK II – Situation Analysis

Description of Task

Situation Analysis begins with review of Reach C – NRCS /RGHRP & GIS/GPS
Financial participation of Silva Ditch, Atencio Ditch, and Prairie Ditch established
Plaza Stakeholders get first-hand familiarity with the 2-mile reach of Sevenmile Plaza
McDonald Ditch Diversion reviewed in context of 2-mile reach of Sevenmile Plaza
NRCS preliminary design and engineering reviewed
Multiple Objectives (above) reviewed and Project Elements defined accordingly
Partnership communicates the Plaza Planning Process to the public

Method/Procedure

NRCS and RGHRP review the present situation at first Plaza Stakeholders meeting.
Silva, Atencio, and Prairie Ditches ante up their financial contribution to the Partnership.
Partnership reviews GIS/GPS maps, NRCS engineering, and pertinent sections of 2001 Study.
Coordinator organizes a field day for Plaza Stakeholders to walk the properties, see the river.
Coordinator writes and disseminates first press release.
Stakeholders gather for a Field Day at the Plaza (Ruth Heide of the Valley Courier is invited).

Deliverable

A summary is completed of project elements to be addressed.

The current situation is well understood by all Plaza Stakeholders; residents of Sevenmile Plaza communities are not “surprised” by unexplained activity in their neighborhood, creating understanding and fostering good will for the project.

TASK 3 – Project Element Evaluation

Description of Task

Analyze interactions between the project elements
Formulate potential alternatives for each element
Prioritize analysis of McDD Diversion, including design, engineering, and funding options

Method/Procedure

NRCS, geomorphic and micro-hydropower engineers offer alternative designs/structures.
Stakeholders and Partnership formulate potential alternatives for each element.
NRCS quantifies its matching funds and identifies potential additional NRCS funding
Engineers and NRCS review alternatives for McDonald Ditch

Deliverable

The Plaza Project - Phase 1 has analyzed the different elements and has reviewed best management practices to restore the historical functions of the river in this reach. Using an interactive approach with Plaza Stakeholders and communicating with the general public, the Project's beneficiaries and related governmental agencies are now well informed and prepared to analyze the options and to develop recommendations for Phase II implementation.

TASK IV – McDonald Ditch Diversion – Selection of Alternative

Description of Task

Conduct a cost/benefit analysis of alternative design options for McDonald Ditch Diversion
Select most feasible alternative for the McDonald Ditch Diversion
Secure the commitment of the Board of Directors of McDD to this alternative

Method/Procedure

The Partnership, NRCS, and contracted outside engineers conduct a cost/benefit analysis of alternative design options for McDonald Ditch Diversion and select the best alternative.

Coordinator prepares a timeline and a preliminary budget for the Phase II McDonald Ditch Plan.

Coordinator organizes a meeting of the Partnership with the Board of Directors of the McDonald Ditch Company to

- Review the chosen alternative, the time line, and the preliminary budget.
- Provide feedback from McDD Board to the Partnership
- Endorse and commit to the Phase II Plaza Plan

Coordinator documents comments and feedback from the Board of Directors of the McDonald Ditch Company.

RGHRP and Jamie Hart, President of McDD, present the selected alternative to the Stakeholders, detailing the benefits of this alternative in terms of meeting the above Objectives.

Coordinator creates the first draft of the McDonald Ditch Diversion Rehabilitation Plan.

Deliverable

The draft of the McDonald Ditch Diversion Rehabilitation Plan responds to the overall objectives of the 2001 Study, providing for maintenance of channel capacity and overbank capacity, protection of the channel and floodplain from damage by flooding, maintenance of riparian habitat, delivery of Rio Grande Compact commitments, and improved access to the river

for irrigation. The draft of this McDonald Ditch Plan incorporates input from the Board of McDD and prepares for the final design, budget, time line, and bidding process of Task V.

TASK V – McDonald Ditch Final Design

Description of Task

Development of final McDD design and construction cost estimate

Method/Procedure

NRCS delivers final design and engineering for the McDonald Ditch Diversion to Partnership
NRCS delivers final construction cost estimate for the McDonald Ditch Diversion to Partnership

Final design and cost estimates for the McDonald Ditch must address the multiple Objectives to be achieved in the river corridor as listed in the 2001 Study (see above).

Final design and cost estimates for the McDonald Ditch must take into account the future planning needs of neighboring diversions to address (at least) the following, as defined in the 2001 Study:

- | | |
|----------------|---|
| Silva Ditch: | Unstable channel upstream and downstream of the diversion entrance
Lateral migration of the meander bend
Bedrock limitations on lateral migration
Large diversion dam creates a backwater pool
Problems with accumulation of debris, sediment at diversion entrance |
| Atencio Ditch: | Shares the same access channel with the Silva Ditch
Sediment and debris are a problem
Structure consistently fails to carry its decreed capacity in moderate flows
Design capacity may be an issue |
| Prairie Ditch: | The location of the diversion entrance may be a problem
Some potential for sediment accumulation. |

Deliverable

Final engineering, Scope of Work, Budget, and Time Line are complete for Phase II of the McDonald Ditch Diversion restoration. Rehabilitation of the McDonald Ditch Diversion conforms to multiple objectives in the 2001 Study and integrates with future plans for the 2-mile reach of Sevenmile Plaza. Partnership is prepared to solicit bids for the McDonald Ditch Phase II implementation

TASK VI - Preparation for Implementation of Phase II – McDD Diversion

Description of Task

Prospective bidders are reviewed for implementation of Phase II of the McDonald Ditch. Matching funds and grant funding sources are identified and pursued for McDD Phase II

Method/Procedure

Coordinator organizes and facilitates each step in Partnership's identifying the most qualified, most affordable, and most favorable contractor(s) to complete McDD Project in Phase II. Coordinator facilitates the following:

1. Develop bidders' list
2. Develop bid specifications
3. Create policy/procedures, define standards, establish general terms/conditions for bidding

The Foundation, RGHRP, and Coordinator identify potential funding sources. Included among prospective matching funds will be Rio Grande County, the Colorado Division of Wildlife (CDOW), NRCS-Environmental Quality Incentive Program (EQIP), the Colorado Habitat Improvement Program (CHIP), the Colorado Non-Point Source Program, the NRCS-sponsored Colorado Partnership Program (CPP), and Water Supply Reserve Account Funds

Deliverable

The bid process is initiated and funding sources are identified for the McDonald Ditch Diversion Phase II.

TASK VII – Preliminary Design Development – Other Project Elements

Description of Task

Perform cost/benefit analysis of alternative restoration options for the Silva, Atencio, and Prairie diversions and for all other elements (bends, riparian areas) in this reach of the river.

Determine the desired alternatives for each element of the project, responding to structural restoration Objectives of the 2001 Study.

Complete preliminary design of the selected alternatives.

Method/Procedure

Water Supply Reserve Account – Grant Application Form

Form Revised March 2009

Coordinator schedules and organizes two Plaza Stakeholder meetings in the next six weeks, with the first one being an on-site reconnaissance of each element in the 2-mile reach of the river at Sevenmile Plaza.

Each ditch company will be represented at both of these meetings.

The geomorphic engineer and the micro-hydropower engineer will accompany NRCS engineers and Plaza Stakeholders on the site visit to answer questions and to discuss specific design options and concerns.

At the second meeting of the Plaza Stakeholders, RGHRP / NRCS will summarize potential alternatives for each element, including cost/benefit analysis, timeline, and relative merits of each option.

(Continuation of Task III will ensure that project element evaluations from the McDD will inform this process, coordinating all restoration elements toward the Final Design).

(Task VIII will begin at this point, running concurrently, optimizing the design byh NRCS toward the Final Design).

At the second meeting the Plaza Stakeholders, the Partnership, and the respective ditch companies will agree upon the desired alternative for each element.

Preliminary design development by NRCS will migrate into Task VIII and the Final Plaza Design.

Deliverable

The roadmap of the 2001 Study has informed the planning process for all elements in the 2-mile reach of the Rio Grande at Sevenmile Plaza, as follows:

- **Water Quality:** Water quality on Reach C of the Rio Grande and on the McDonald, Silva, Atencio, and Prairie irrigation ditches will be maintained or improved, protecting beneficial uses designated by the State of Colorado.
- **Diversion Structures:** Improving the function and reliability of the McDonald, Silva, Atencio, and Prairie diversions to deliver irrigation water will be accomplished with consideration for riparian health, fisheries, and recreational opportunities in the Sevenmile Plaza communities.
- **Floodplain:** The “poorest” condition of this 2-mile reach will be greatly ameliorated or cured, protecting the Rio Grande channel and the 100-year floodplain from flood damage. Community outreach during this planning process will convey the importance of protecting

Water Supply Reserve Account – Grant Application Form

Form Revised March 2009

existing structures, and making sure that new development and redevelopment is constructed to avoid adverse impacts to 100-year floodplain functions and values.

- **Recreation:** Residents of Sevenmile Plaza will delight in the beauty and natural diversity of the riparian areas, gaining a new respect for keeping them clean and undisturbed. Fishing, boating, and river-related activities will be improved in the vicinity of the high-visibility Sevenmile Bridge. This planning will have incorporated aesthetic considerations for the benefit of local businesses, residents, and tourists.
- **Synergy:** The Plaza Stakeholders represent a collaboration of land owners, residents, municipalities, public agencies and community watershed groups, all working to support the objectives laid out by RGHRP in the 2001 Study.
- **Funding:** In this task and in Task VIII, The Coordinator has supported the Partnership in identifying funding sources from state and federal agencies, nonprofit and community organizations, businesses, and individuals to implement this high-priority project.

Preliminary designs for each element on this 2.8-mile reach of the Rio Grande have been completed.

TASK VIII – Strategy for Final Design and Implementation of the Plaza Plan

Description of Task

Identify elements of the Plaza Plan to be implemented
Prioritize implementation of these elements
Work with NRCS to determine availability/resources to finalize plans and cost estimates
Establish the proposed implementation plan for all elements of the Plaza Plan
Identify potential matching funds and pursue potential funding sources
Identify funding and additional resources to support the work of NRCS
Build public awareness and acceptance for the Plaza Plan

Method/Procedure

RGHRP and Coordinator call meeting of Plaza Stakeholders to identify and prioritize those elements of the Plaza Plan which are to be implemented in Phase II.

Coordinator and NRCS identify potential funding and additional resources to support the engineering work of NRCS toward finalizing designs, engineering, and cost estimates.
Coordinator and NRCS collaborate to submit proposals accordingly, drawing from the following potential sources:

Water Supply Reserve Account – Grant Application Form

Form Revised March 2009

NRCS-Environmental Quality Incentive Program (EQIP), the Colorado Habitat Improvement Program (CHIP), the Colorado Non-Point Source Program, and the NRCS-sponsored Colorado Partnership Program (CPP).

RGHRP, Coordinator, and the NRCS determine the resources available and the timeline required for NRCS to produce Phase II final plans and cost estimates for each element of the Plaza Plan.

Coordinator and RGHRP present the above findings at a meeting of the Plaza Stakeholders and establish agreement on the prioritizing of each element, the estimated time line and budget, and an outline of the proposed implementation plan.

Coordinator writes up the proposed implementation plan for all elements of the Plaza Plan.

Coordinator works with Plaza Stakeholders to obtain commitments for specific resources, services, and/or matching funds for Phase II.

Coordinator researches potential funding from other entities such as Trout Unlimited, The Nature Conservancy, Great Outdoors Colorado, and foundations and agencies supporting wildlife, water quality, wetlands restoration, fishing and outdoor recreation, as well as local donors, businesses and community organizations.

Coordinator establishes collaboration with Community Partnerships at Adams State College, the Rio Grande Basin Roundtable's Education Coordinator, The Rio Grande Watershed Education Foundation, and Plaza Stakeholders to promote the Plaza Project Plan. This outreach can include press releases and PSA's, K-12 educational activities such as poster contests and field trips, and web-based visibility for the Plaza Planning Process. Coordinator will propose having a Valley-wide celebration of some kind, perhaps held at Sevenmile Plaza, to build awareness and support, and to celebrate the long-term prospects of the Plaza Plan.

Deliverable

The proposed implementation plan for the Plaza Project has been finalized
The proposed plan incorporates state-of-the-art and best practice restoration of each element
The Plaza Stakeholders are committed and invested in the outcome of the Plaza Plan
Matching funds in the form of in-kind and in-cash contributions are identified
Grant funds to support the work of NRCS are identified, with proposals underway
Local communities and residents anticipate fulfilling the promise of the Plaza Project
RGHRP augments public awareness throughout the Valley of its work on the Rio Grande

For the Foundation and for the RGHRP, the Plaza Project - Phase 1 has increased collaboration and cooperation; reduced uncertainty that this important water activity will be implemented; increased the likelihood of achieving the 2001 Study's water management goals and objectives; and ensured that many issues of statewide value will be addressed.

NRCS, the Partnership, and the Plaza Stakeholders will continue to have access, in Phase II, to the interactive web-based planning and working site created by the Coordinator. This could also suggest a regular web site to update the public on progress in implementing the Plaza Plan.

TASK 9 – Final Reporting

Description of Task

The Partnership will submit its Final Report for this Plaza Project - Phase 1

Method/Procedure

Coordinator organizes records, correspondence, contracts, and financial records, making sure that all grant applications and internal/external reports are submitted in an accurate and timely way.

Coordinator supports the Foundation and RGHRP's Director in submitting to CWCB the Plaza Planning Project's final report summarizing the Planning Project, presenting the selected alternatives to be implemented in Phase II, and documenting how the proposed implementation plan for Phase II was completed. This report will definitely include photographs, and it may include summaries of meetings and/or engineering reports/designs.

Deliverable

The work of the Plaza Project - Phase 1 is complete, creating a proposed implementation plan for the Plaza Project. All requirements of the Rio Grande Roundtable and the CWCB have been met.

REPORTING AND FINAL DELIVERABLE

Reporting: The applicant shall provide the CWCB a progress report as requested, beginning from the date of the executed contract. The progress report shall describe the completion or partial completion of the tasks identified in the statement of work including a description of any major issues that have occurred and any corrective action taken to address these issues.

Final Deliverable: At completion of the project, the applicant shall provide the CWCB a final report that summarizes the project and documents how the project was completed. This report may contain photographs, summaries of meetings and engineering reports/designs.

(Budget is on the next page)

BUDGET

PHASE I - PLAZA PLANNING PROJECT BUDGET

Mc Donald Ditch - Contribution To Date	\$ 4,100.00
Other Participants' Contribution	\$ 3,000.00
Project Coordinator - 5 months	\$ 17,300.00
RGHRP Admin / Liaison / Direct - 5 months	\$ 12,700.00
Geomorphic Engineer - 3rd Party	\$ 5,000.00
Micro - Hydro Power Engineer - 3rd. Party	\$ 5,000.00
Engineering - NRCS	\$ 36,200.00
State/Federal Agencies & Volunteers - In -Kind	\$ 6,700.00

PHASE I -PLAZA PLANNING PROJECT TOTAL COST	\$ 90,000.00
---	---------------------

SOURCES OF FUNDS

Mc Donald Ditch - Contribution To Date	\$ 4,100.00
Other Diversions Contribution	\$ 3,000.00
Engineering - NRCS - In-Kind	\$ 36,200.00
State/Federal Agencies & Volunteers - In -Kind	\$ 6,700.00

Total Cash & In-Kind Contributions	\$ 50,000.00 (55%)
---	---------------------------

Required Cash Funds

Project Coordinator - 5 months	\$ 17,300.00
RGHRP Admin / Liaison - 5 months	\$ 12,200.00
Geomorphic Engineer - 3rd Party	\$ 5,000.00
Micro - Hydro Engineer - 3rd. Party	\$ 5,000.00
Administration Direct Costs	\$ 500.00

WSRA - BASIN FUNDS REQUESTED	\$ 40,000.00 (44%)
-------------------------------------	---------------------------

PHASE I - PLAZA PLANNING PROJECT TOTAL COST	\$ 90,000.00
--	---------------------

Water Supply Reserve Account – Grant Application Form
Form Revised March 2009

SCHEDULE

PLAZA PLANNING PROJECT -- S C H E D U L E					
Months From Award of Funding	Month 1	Month 2	Month 3	Month 4	Month 5
Task					
I - NTP, Coordination of Stakeholders					
II - Situation Analysis					
III - Project Element Evaluation					
IV - McDonald Ditch Diversion - Selection of Alternative					
V - McDonald Ditch Final Design					
VI - Preparation for Implementation of Phase II - McDD Project					
VII - Preliminary Design Development - Other Project Elements					
VIII - Strategy for Final Design and Implementation of Other Project Elements					
IX - Final Reporting					

Allocation of hours for WSRA funds

Partner Coordinator (120 hrs/mo @ \$28.83)	\$ 3,460.00	\$ 3,460.00	\$ 3,460.00	\$ 3,460.00	\$ 3,460.00
RGHRP Director / Staff (\$12,200/5)	\$ 2,440.00	\$ 2,440.00	\$ 2,440.00	\$ 2,440.00	\$ 2,440.00
Engineer(s) (\$100/hr)	0	\$ 5,000.00	\$ 5,000.00	0	0
Office Expenses (phone, copies, etc.)	\$ 100.00	\$ 100.00	\$ 100.00	\$ 100.00	\$ 100.00
TOTAL / Month	\$ 5,000.00	\$12,000.00	\$ 8,500.00	\$ 9,500.00	\$ 5,000.00
WSRA TOTAL					\$40,000.00

Water Supply Reserve Account – Grant Application Form
Form Revised March 2009

PAYMENT

Payment will be made based on actual expenditures and invoicing by the applicant. Invoices from any other entity (i.e. subcontractors) cannot be processed by the State. The request for payment must include a description of the work accomplished by major task, and estimate of the percent completion for individual tasks and the entire water activity in relation to the percentage of budget spent, identification of any major issues and proposed or implemented corrective actions. The last 5 percent of the entire water activity budget will be withheld until final project/water activity documentation is completed. All products, data and information developed as a result of this grant must be provided to the CWCB in hard copy and electronic format as part of the project documentation. This information will in turn be made widely available to Basin Roundtables and the general public and help promote the development of a common technical platform.

The above statements are true to the best of my knowledge:

Signature of Applicant:

Print Applicant's Name:

Project Title:

Return this application to:

Mr. Todd Doherty
Intrastate Water Management and Development Section
COLORADO WATER CONSERVATION BOARD
1580 Logan Street, Suite 200
Denver, CO 80203

To submit applications by Email, send to: todd.doherty@state.co.us

THIS PAGE LEFT BLANK INTENTIONALLY

McDonald Ditch Diversion in Winter

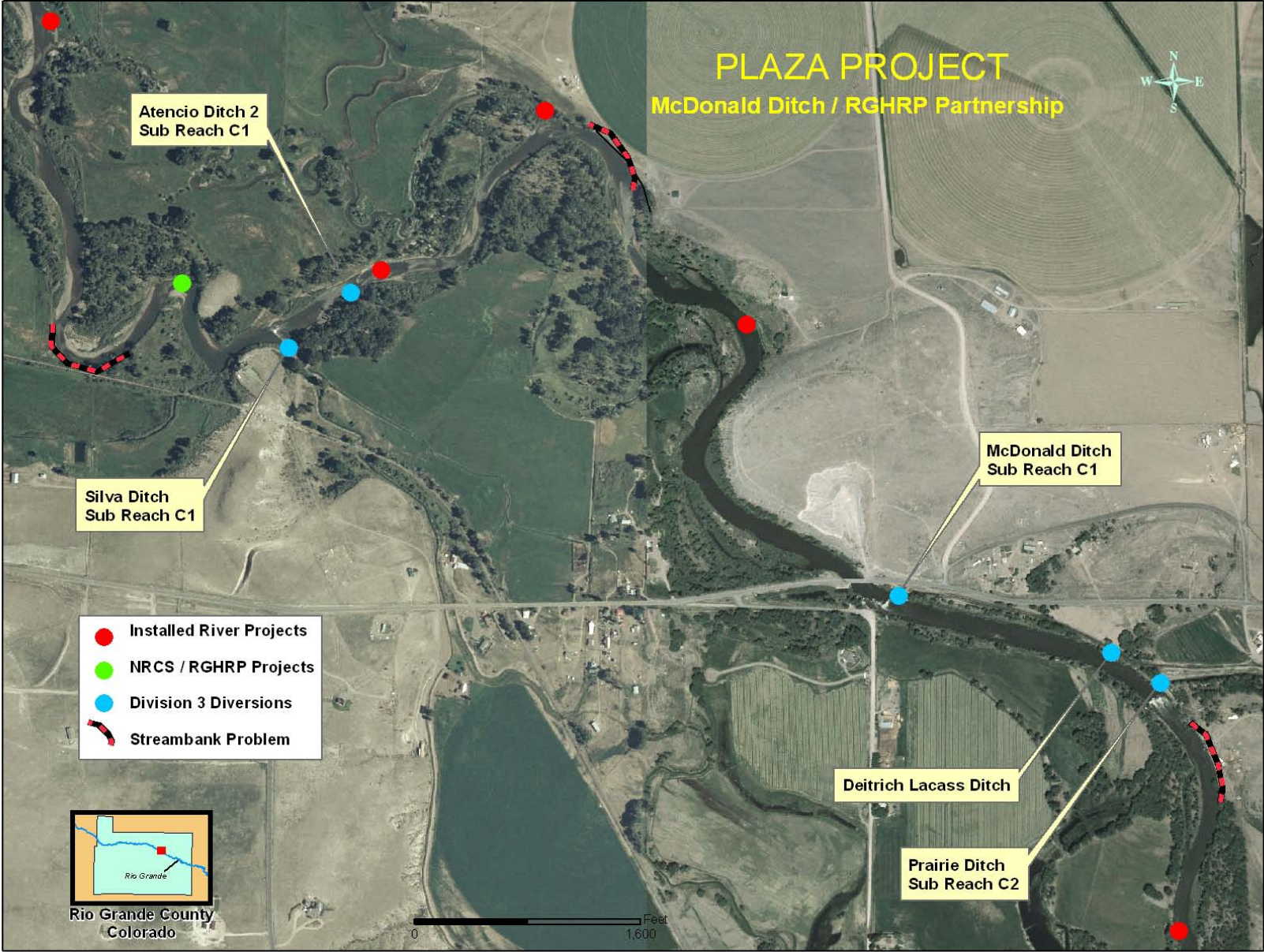


McDonald Ditch Headgate



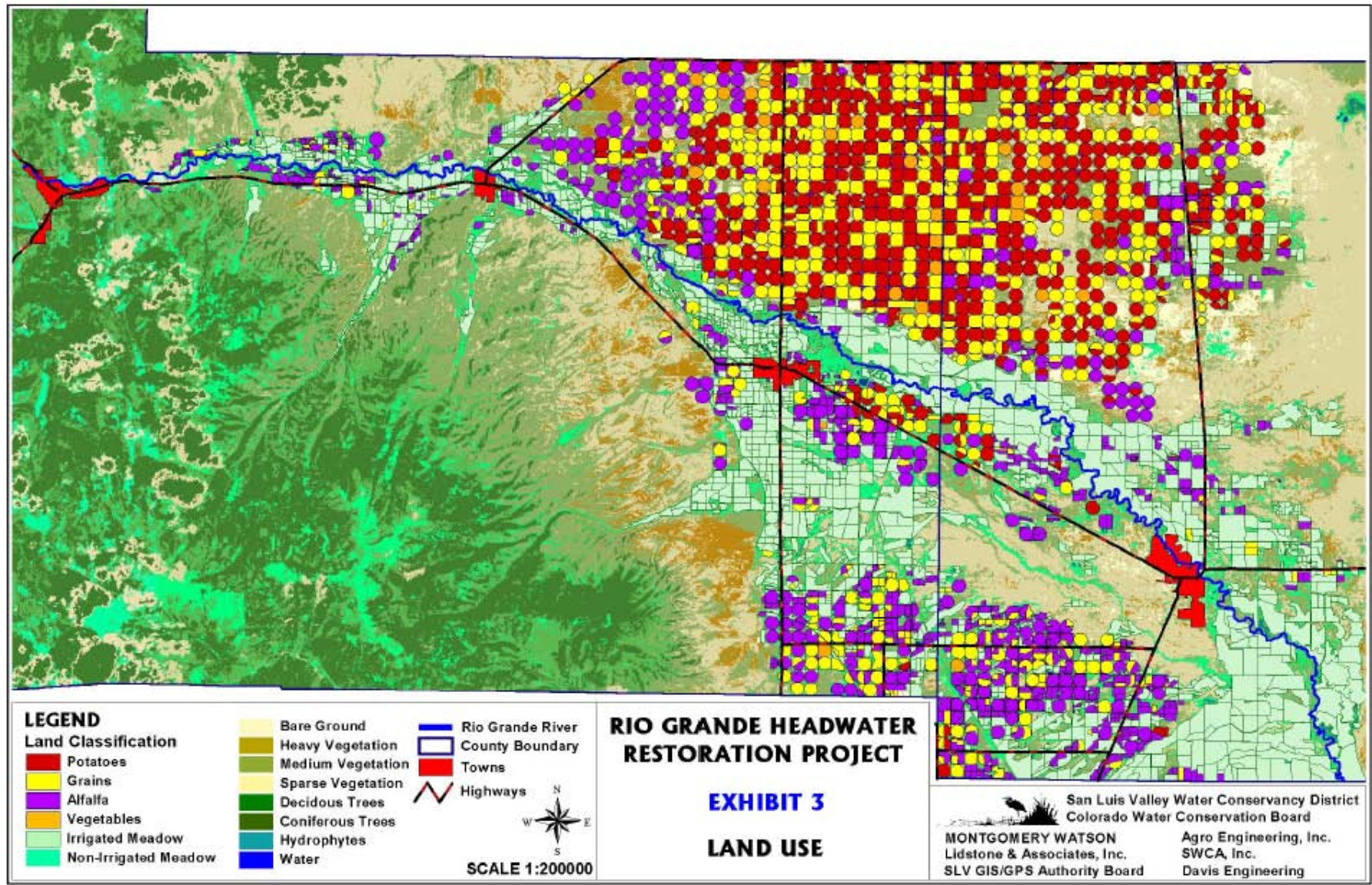
Water Supply Reserve Account – Grant Application Form

Form Revised March 2009

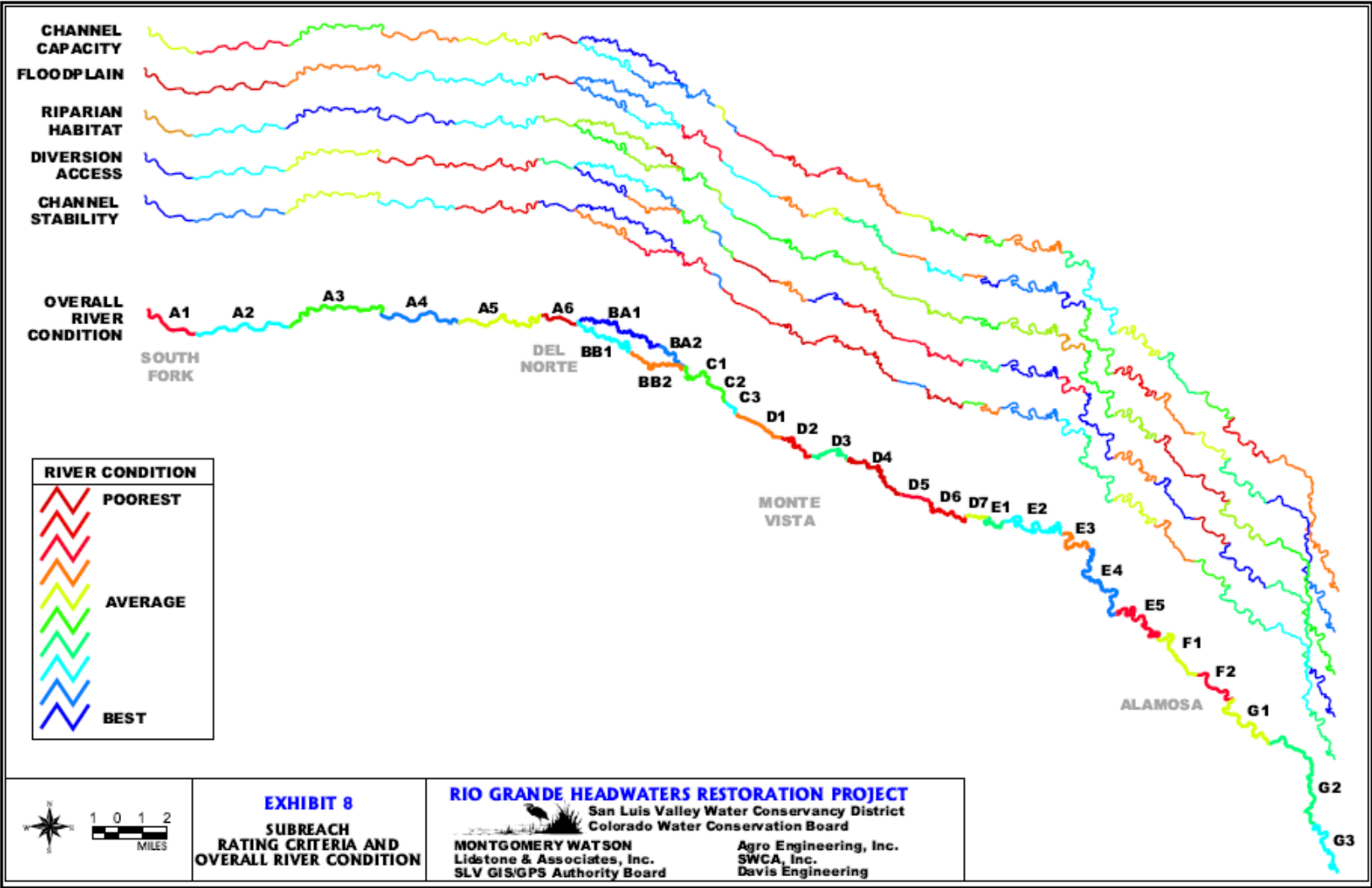


Water Supply Reserve Account – Grant Application Form

Form Revised March 2009

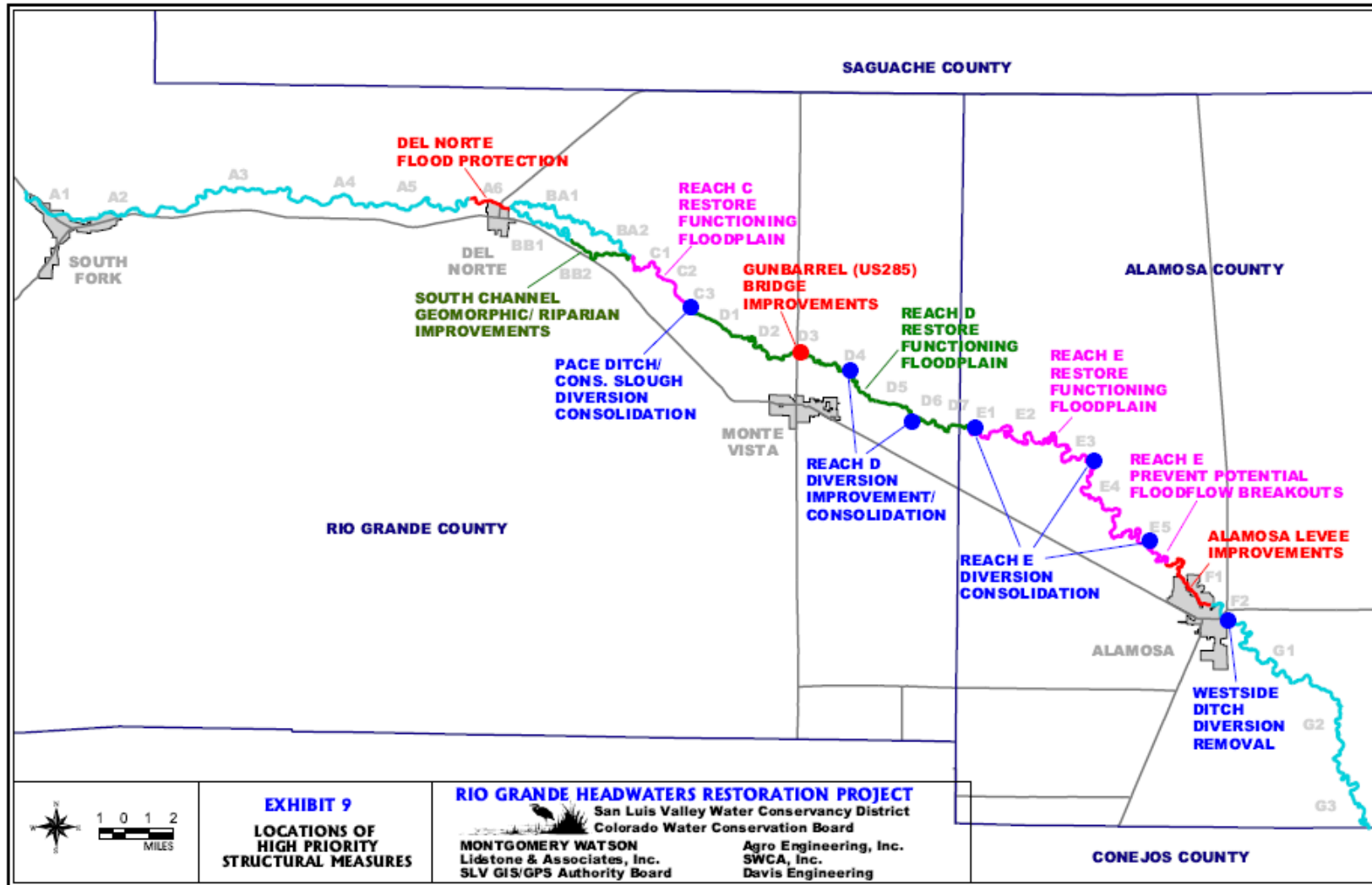


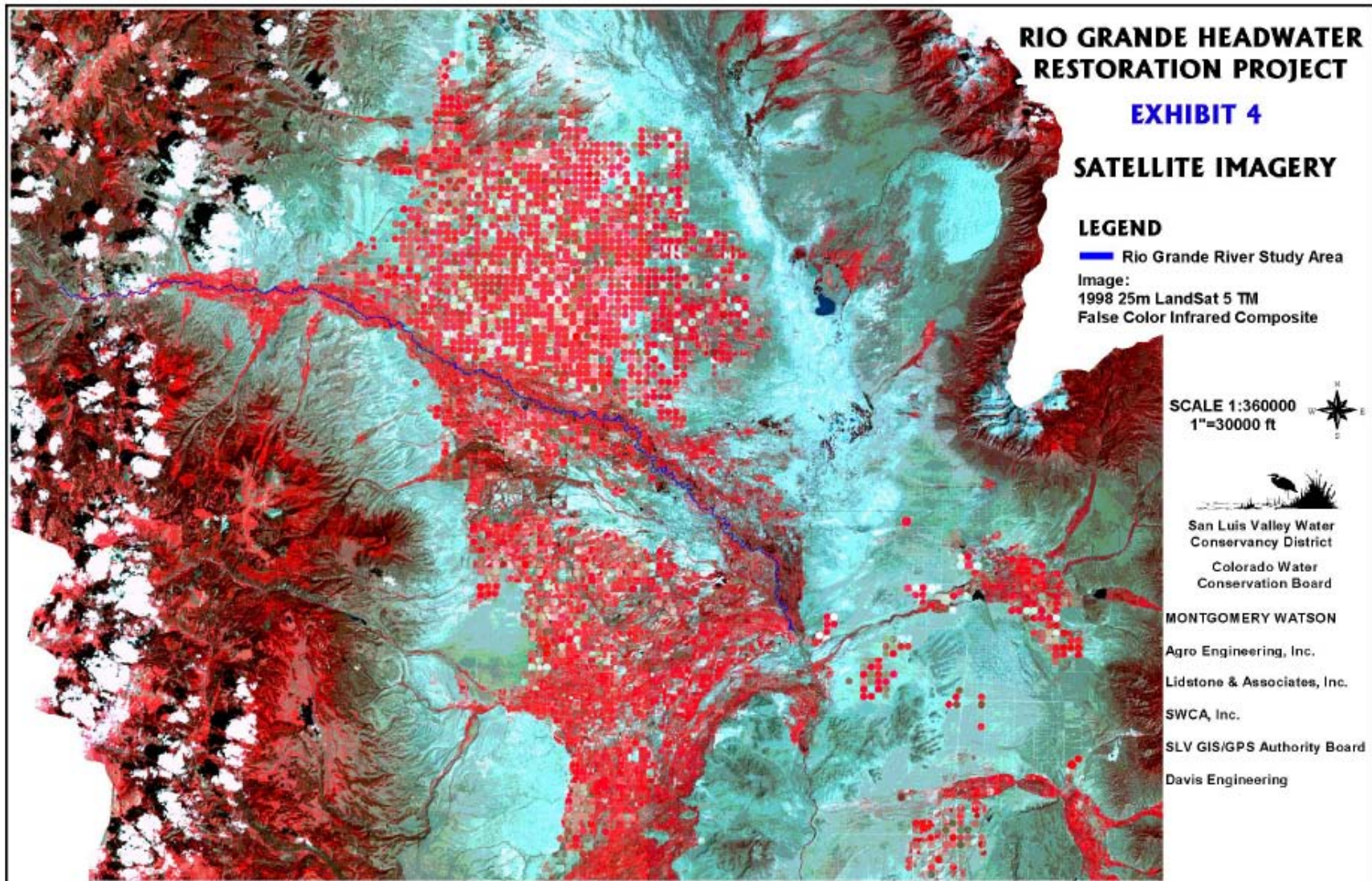
Floodplain and Channel Stability Ranked as “Poorest” in RGHRP 2001 Study



Water Supply Reserve Account – Grant Application Form

Form Revised March 2009







Water Supply Reserve Account – Grant Application Form
Form Revised March 2009

Attachment 1
Reference Information

The following information is available via the internet. The reference information provides additional detail and background information.

Colorado Water Conservation Board (<http://cwcb.state.co.us/>)

Loan and Grant policies and information are available at – <http://cwcb.state.co.us/Finance/>

Interbasin Compact Committee and Basin Roundtables (<http://ibcc.state.co.us/>)

Interbasin Compact Committee By-laws and Charter (under Helpful Links section) –
<http://ibcc.state.co.us/Basins/IBCC/>

Legislation

House Bill 05-1177 - Also known as the Water for the 21st Century Act –

<http://cwcbweblink.state.co.us/DocView.aspx?id=105662&searchhandle=28318>

House Bill 06-1400 – Adopted the Interbasin Compact Committee Charter –

<http://cwcbweblink.state.co.us/DocView.aspx?id=21291&searchhandle=12911>

Senate Bill 06-179 – Created the Water Supply Reserve Account –

<http://cwcbweblink.state.co.us/DocView.aspx?id=21379&searchhandle=12911>

Statewide Water Supply Initiative

General Information – <http://cwcb.state.co.us/IWMD/>

Phase 1 Report – <http://cwcb.state.co.us/IWMD/SWSITechnicalResources/SWSIPhaseIReport/>

Attachment 2
Insurance Requirements

NOTE: The following insurance requirements taken from the standard contract apply to WSRA projects that exceed \$25,000 in accordance with the policies of the State Controller's Office. Proof of insurance as stated below is necessary prior to the execution of a contract.

13. INSURANCE

Grantee and its Sub-grantees shall obtain and maintain insurance as specified in this section at all times during the term of this Grant: All policies evidencing the insurance coverage required hereunder shall be issued by insurance companies satisfactory to Grantee and the State.

1. Grantee

i. Public Entities

If Grantee is a "public entity" within the meaning of the Colorado Governmental Immunity Act, CRS §24-10-101, et seq., as amended (the "GIA"), then Grantee shall maintain at all times during the term of this Grant such liability insurance, by commercial policy or self-insurance, as is necessary to meet its liabilities under the GIA. Grantee shall show proof of such insurance satisfactory to the State, if requested by the State. Grantee shall require each Grant with Sub-grantees that are public entities, providing Goods or Services hereunder, to include the insurance requirements necessary to meet Sub-grantee's liabilities under the GIA.

ii. Non-Public Entities

If Grantee is not a "public entity" within the meaning of the GIA, Grantee shall obtain and maintain during the term of this Grant insurance coverage and policies meeting the same requirements set forth in §13(B) with respect to sub-Grantees that are not "public entities".

2. Sub-Grantees

Grantee shall require each Grant with Sub-grantees, other than those that are public entities, providing Goods or Services in connection with this Grant, to include insurance requirements substantially similar to the following:

i. Worker's Compensation

Worker's Compensation Insurance as required by State statute, and Employer's Liability Insurance covering all of Grantee and Sub-grantee employees acting within the course and scope of their employment.

ii. General Liability

Commercial General Liability Insurance written on ISO occurrence form CG 00 01 10/93 or equivalent, covering premises operations, fire damage, independent Grantees, products and completed operations, blanket Grantual liability, personal injury, and advertising liability with minimum limits as follows: (a) \$1,000,000 each occurrence; (b) \$1,000,000 general aggregate; (c) \$1,000,000 products and completed operations aggregate; and (d) \$50,000 any one fire. If any aggregate limit is reduced below \$1,000,000 because of claims made or paid, Sub-grantee shall immediately obtain additional insurance to restore the full aggregate limit and furnish to Grantee a certificate or other document satisfactory to Grantee showing compliance with this provision.

iii. Automobile Liability

Automobile Liability Insurance covering any auto (including owned, hired and non-owned autos) with a minimum limit of \$1,000,000 each accident combined single limit.

iv. Additional Insured

Water Supply Reserve Account – Grant Application Form

Form Revised March 2009

Grantee and the State shall be named as additional insured on the Commercial General Liability and Automobile Liability Insurance policies (leases and construction Grants require additional insured coverage for completed operations on endorsements CG 2010 11/85, CG 2037, or equivalent).

v. Primacy of Coverage

Coverage required of Grantee and Sub-grantees shall be primary over any insurance or self-insurance program carried by Grantee or the State.

vi. Cancellation

The above insurance policies shall include provisions preventing cancellation or non-renewal without at least 45 days prior notice to the Grantee and the State by certified mail.

vii. Subrogation Waiver

All insurance policies in any way related to this Grant and secured and maintained by Grantee or its Sub-grantees as required herein shall include clauses stating that each carrier shall waive all rights of recovery, under subrogation or otherwise, against Grantee or the State, its agencies, institutions, organizations, officers, agents, employees, and volunteers.

3. Certificates

Grantee and all Sub-grantees shall provide certificates showing insurance coverage required hereunder to the State within seven business days of the Effective Date of this Grant. No later than 15 days prior to the expiration date of any such coverage, Grantee and each Sub-grantee shall deliver to the State or Grantee certificates of insurance evidencing renewals thereof. In addition, upon request by the State at any other time during the term of this Grant or any sub-grant, Grantee and each Sub-grantee shall, within 10 days of such request, supply to the State evidence satisfactory to the State of compliance with the provisions of this §13.

Attachment 3
Water Supply Reserve Account Standard Contract

NOTE: The following contract is required for WSRA projects that exceed \$100,000. (Projects under this amount will normally be funded through a purchase order process.) Applicants are encouraged to review the standard contract to understand the terms and conditions required by the State in the event a WSRA grant is awarded. Significant changes to the standard contract require approval of the State Controller's Office and often prolong the contracting process.

It should also be noted that grant funds to be used for the purchase of real property (e.g. water rights, land, conservation easements, etc.) will require additional review and approval. In such cases applicants should expect the grant contracting process to take approximately 3 to 6 months from the date of CWCB approval.

Attachment 4
W-9 Form

NOTE: A completed W-9 form is required for all WSRA projects prior execution of a contract or purchase order. Please submit this form with the completed application.