



2011 Drought Conditions and Response

**CWCB Board Meeting
Denver, CO
November 16, 2011**

**Presentation by Taryn Hutchins-Cabibi
Office of Water Conservation & Drought Planning**



As of the Last Drought Update to the Board

U.S. Drought Monitor Colorado

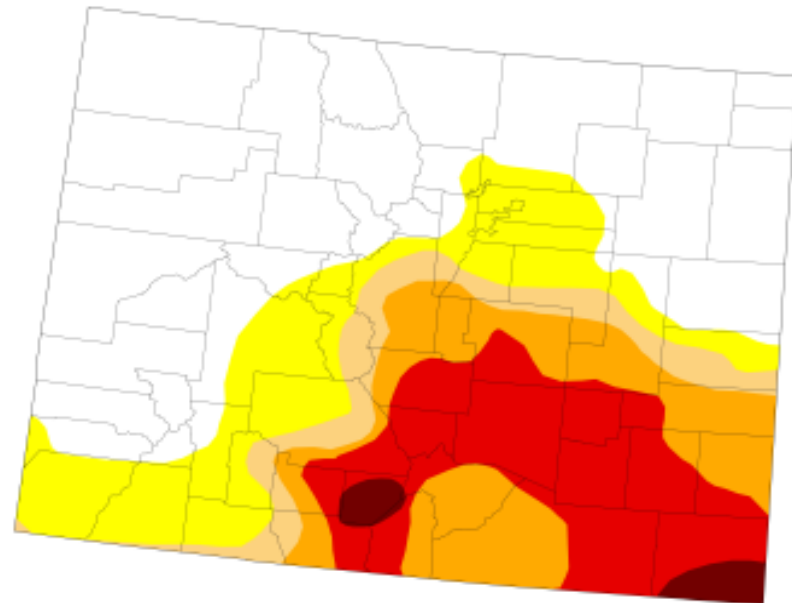
July 5, 2011

Valid 7 a.m. EST

Drought Conditions (Percent Area)

	None	D0-D4	D1-D4	D2-D4	D3-D4	D4
Current	49.31	50.69	34.84	29.02	16.64	1.57
Last Week (06/28/2011 map)	49.91	50.09	34.36	28.89	16.64	0.91
3 Months Ago (04/05/2011 map)	40.11	59.89	54.20	41.58	0.00	0.00
Start of Calendar Year (12/28/2010 map)	40.40	59.60	49.57	10.13	0.00	0.00
Start of Water Year (09/28/2010 map)	28.86	71.14	10.70	0.00	0.00	0.00
One Year Ago (06/29/2010 map)	77.76	22.24	0.00	0.00	0.00	0.00

Intensity:



The Drought Monitor focuses on broad-scale conditions. Local conditions may vary. See accompanying text summary for forecast statements.

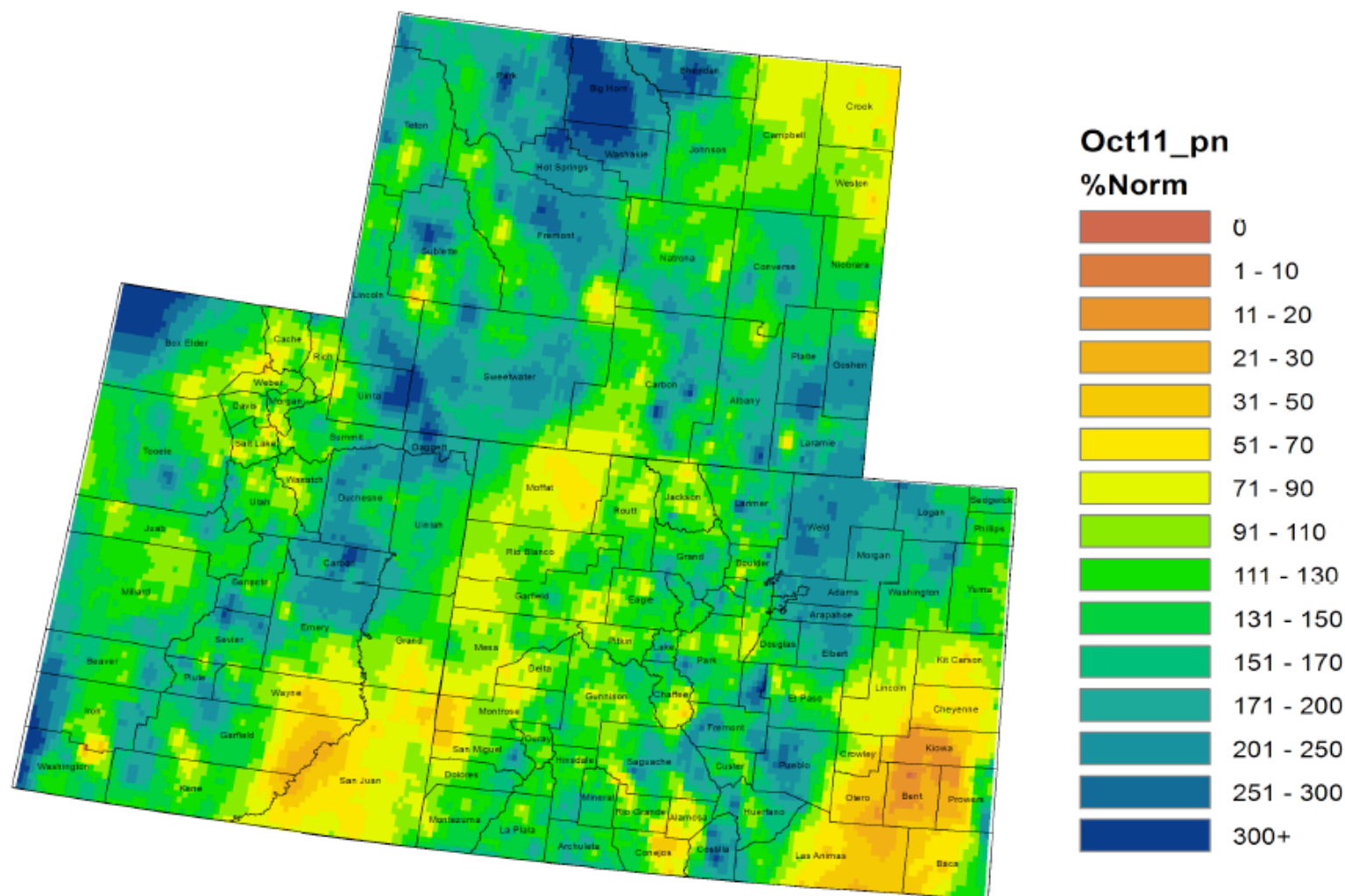
<http://drought.unl.edu/dm>



Released Thursday, July 7, 2011

Richard Heim, NOAA/NESDIS/National Climatic Data Center

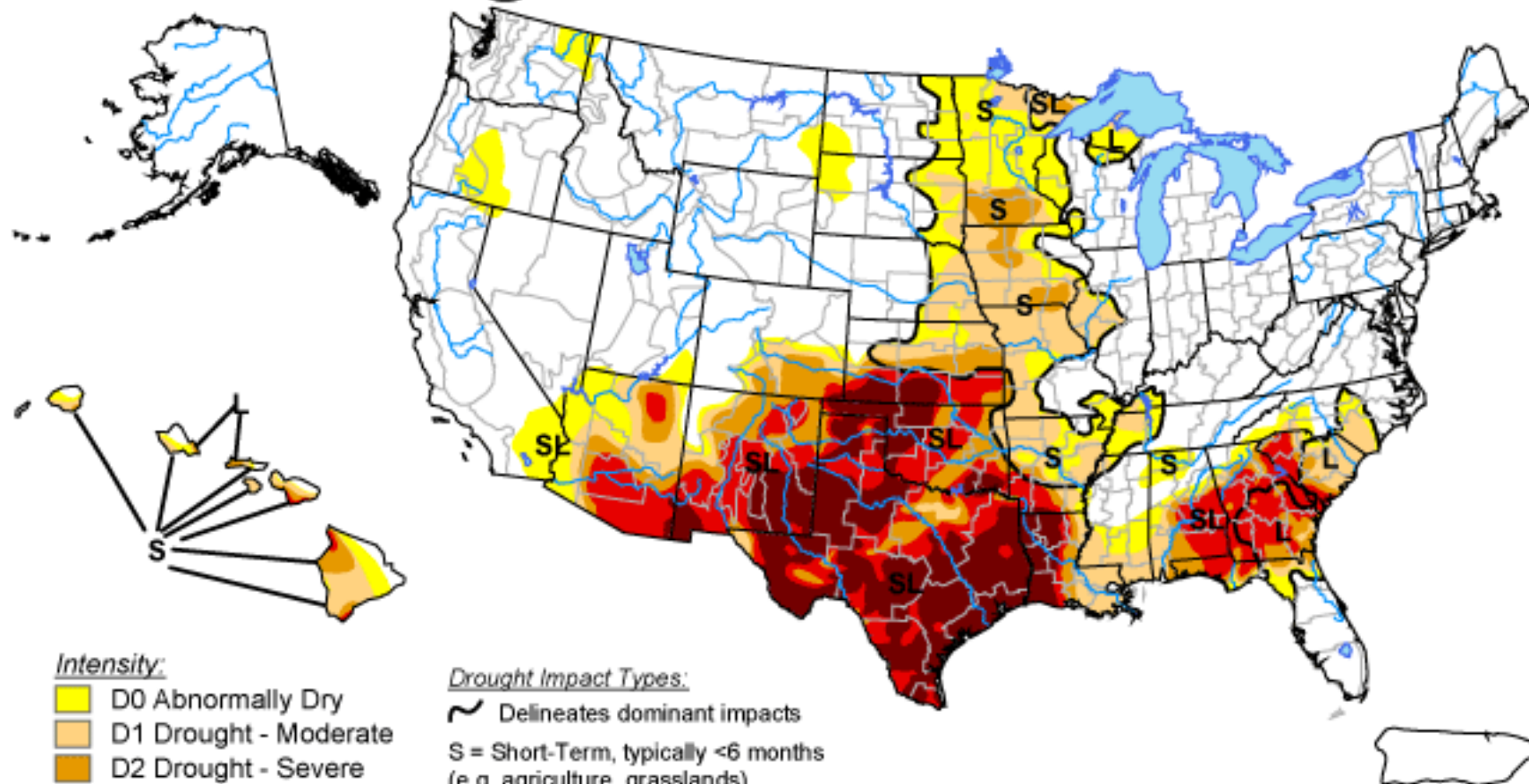
Colorado, Utah and Wyoming October 2011 Precipitation as Percent of Normal



U.S. Drought Monitor

November 8, 2011

Valid 7 a.m. EST



Intensity:

- D0 Abnormally Dry
- D1 Drought - Moderate
- D2 Drought - Severe
- D3 Drought - Extreme
- D4 Drought - Exceptional

Drought Impact Types:

- Delineates dominant impacts
- S = Short-Term, typically <6 months
(e.g. agriculture, grasslands)
- L = Long-Term, typically >6 months
(e.g. hydrology, ecology)

*The Drought Monitor focuses on broad-scale conditions.
Local conditions may vary. See accompanying text summary
for forecast statements.*

<http://droughtmonitor.unl.edu/>



Released Thursday, November 10, 2011

Author: Brian Fuchs, National Drought Mitigation Center

U.S. Drought Monitor

Colorado

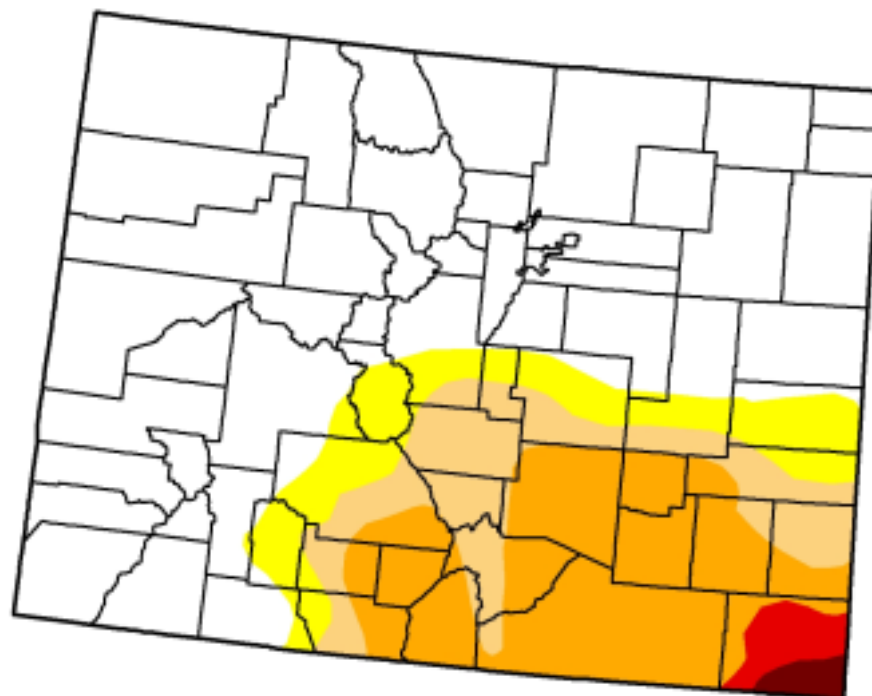
November 8, 2011

Valid 7 a.m. EST

Drought Conditions (Percent Area)

	None	D0-D4	D1-D4	D2-D4	D3-D4	D4
Current	65.98	34.02	26.18	17.44	1.85	0.59
Last Week (11/01/2011 map)	64.45	35.55	27.52	19.88	3.11	0.57
3 Months Ago (08/09/2011 map)	61.06	38.94	30.11	24.84	18.37	1.45
Start of Calendar Year (12/28/2010 map)	40.40	59.60	49.57	10.13	0.00	0.00
Start of Water Year (09/27/2011 map)	60.62	39.38	27.69	19.99	7.88	0.56
One Year Ago (11/02/2010 map)	30.27	69.73	27.85	0.00	0.00	0.00

Intensity:



The Drought Monitor focuses on broad-scale conditions.
Local conditions may vary. See accompanying text summary
for forecast statements.



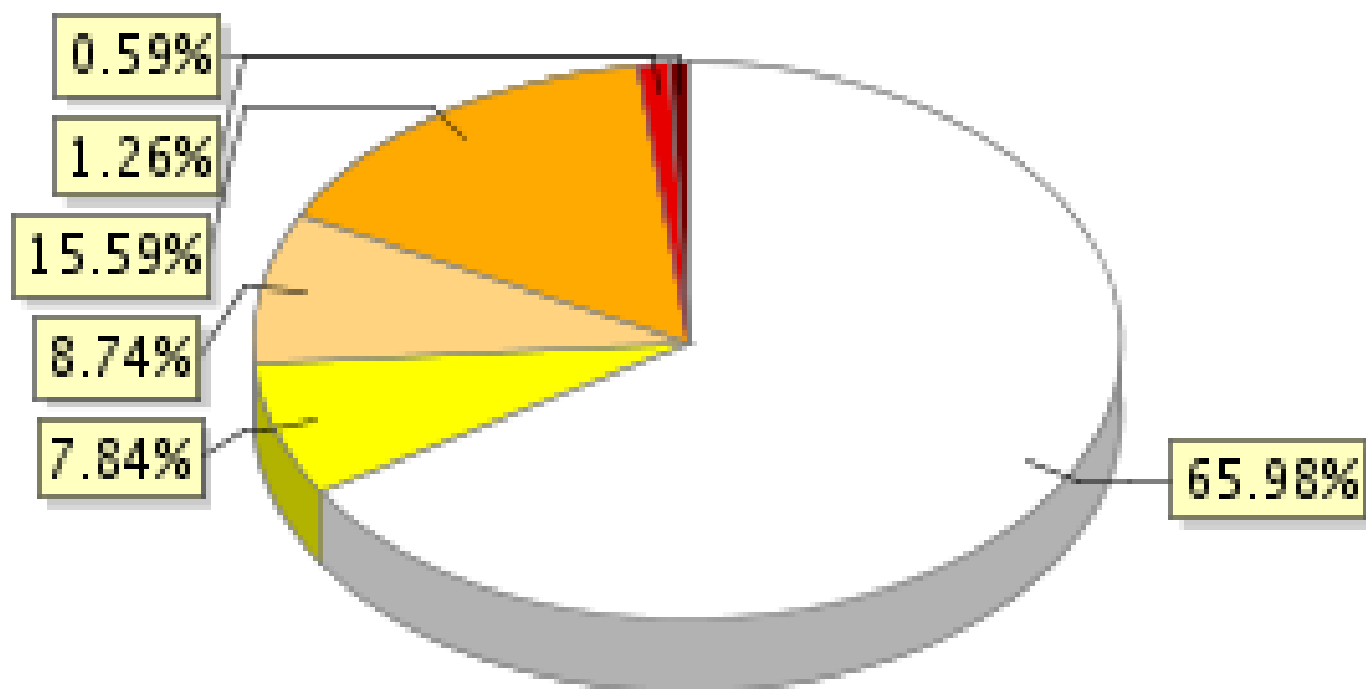
Released Thursday, November 10, 2011
Brian Fuchs, National Drought Mitigation Center

<http://droughtmonitor.unl.edu>

Colorado in Drought

% Area for Colorado (As of 11.8.2011)

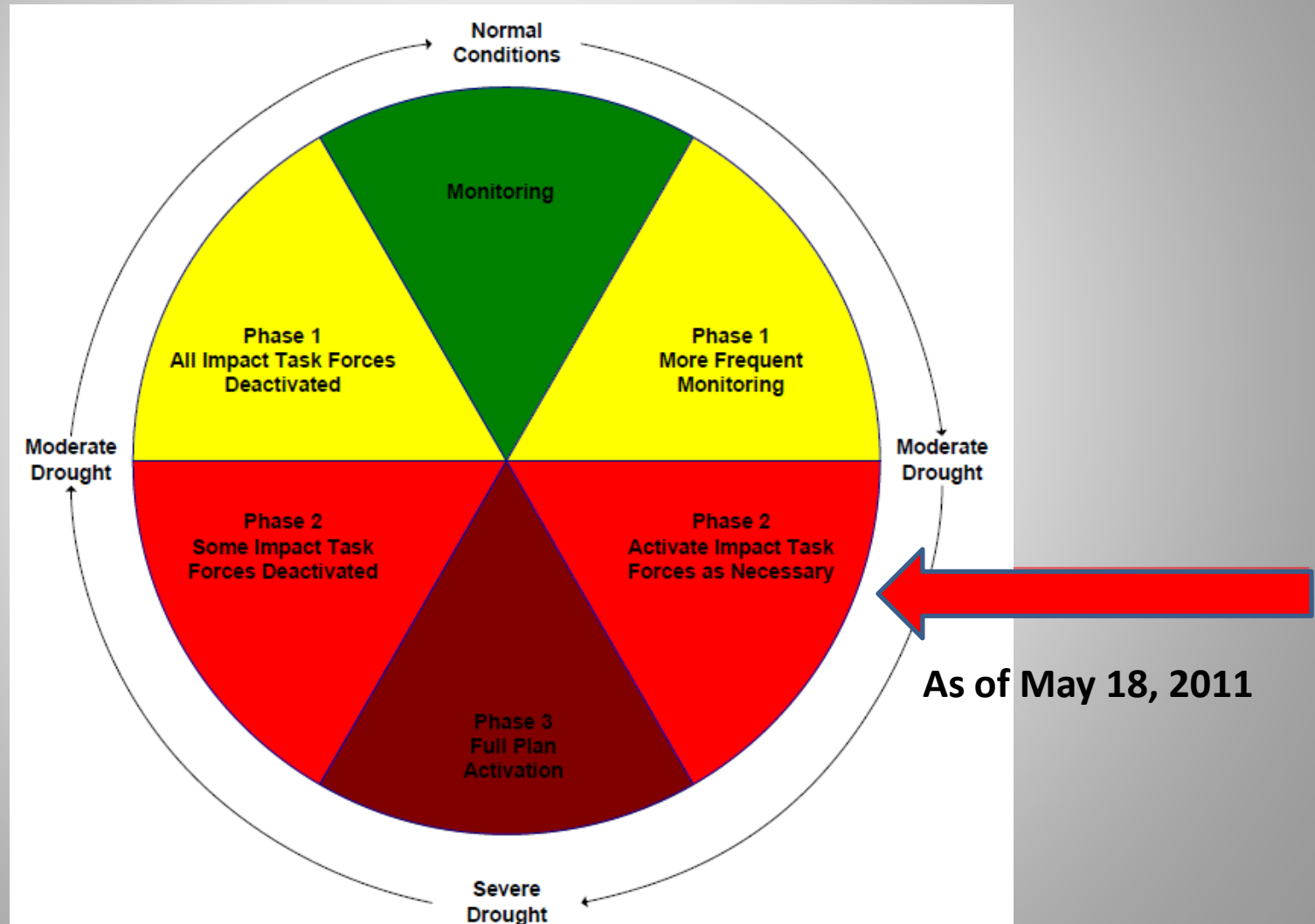
Info Source: National Drought Mitigation Center



○ None ● D0 ● D1 ● D2 ● D3 ● D4

Colorado Drought Response

Drought Plan Implementation Cycle



2011 Drought Response Timeline

May 11, 2011	WATF Recommendation
May 17, 2011	DTF Memo to Governor Hickenlooper
May 18, 2011	Governor activates Phase II of State Drought Plan & Agricultural Impact Task Force (AITF)
May 24, 2011	DTF Mtg
June 1-Nov 1, 2011	AITF Mtg (weekly through July; bi-weekly Aug- Nov.)
J,J,A, S & N	Updates from AgITF to DTF
July 14, 2011	DTF Mtg
June- Sept	Monthly WATF Mtg
Nov 21, 2011	Next WATF Mtg



Agricultural Impact Task Force

Colorado Department of Agriculture
Colorado State University/CO Water Institute
Colorado Water Conservation Board
Division of Water Resources
Farm Service Agency
Colorado Counties
Natural Resources Conservation Service
Lower Arkansas Conservancy
District
CO State University Extension
Service
Colorado Climate Center



Agricultural Impacts

Federal Disaster Declarations (USDA) for Drought

Baca County

Otero County

Crowley County

Bent County

Chaffee County

Custer County

Fremont County

Huerfano County

Kiowa County

Las Animas County

Prowers County

Pueblo County

Alamosa County

Conejos County

Costilla County

Rio Grande County

Saguache County



Agricultural Impacts

Emergency grazing on CRP lands have been granted to:

Baca County

Bent County

Crowley County

Kiowa County

Las Animas County

Lincoln County

Otero County

Prowers County



Economic Impacts

- of 10-4-11, SURE payments in Colorado totaled \$100,122,477. These payments covered both 2008 SURE and 2009 SURE. Payments have been made in every county in the State. **Colorado now ranks 8th highest in the Nation for SURE payments made.**
- Signup for the 2010 SURE program will begin on 11-14-11.

Weekly Failed & Preventive Crop Planted Acreage Data

Totals for 2010 48,920.50 8,209.90 **CROP BREAKDOWN**

Dates	Failed	Prevented	Crop	Failed	Prevented
5/21/2011	42,929.17	2,205.50	-	-	-
6/4/2011	60,625.77	9,132.40	-	-	-
6/18/2011	90,634.51	46,463.38	-	-	-
6/25/2011	111,808	56,329	-	-	-
7/5/2011	151,598	66,096	-	-	-
7/12/2011	171,188	74,484	-	-	-
7/23/2011	211,325.01	91,524.57	-	-	-
8/17/2011	215,988	96,872	-	-	-
8/31/2011	223,753.62	97,373.28	-	-	-
9/10/2011	226,629.22	97,594.22	Corn	13,940	50,085
			Sorghum	445	39,413
			Wheat	199,640	2,063

Counties and Amount Paid to Eligible Producers Through LFP

	\$100,000 or less	\$100k-\$500k	\$500k-\$1M	\$1M- \$1.5M	< \$1.5M
Alamosa	✓				
Baca			✓		
Bent			✓		
Conejos		✓			
Costilla	✓				
Crowley			✓		
Custer		✓			
El Paso		✓			
Fremont	✓				
Huerfano		✓			
Kiowa			✓		
Las Animas				✓	
Lincoln		✓			
Otero				✓	
Park	✓				
Prowers			✓		
Pueblo			✓		
Rio Grande	✓				
Saguache	✓				
Teller	✓				

Next Steps...



- AITF calls on hold
- Continue to examine data
- Estimating the Short and Long-term Economic and Social Impacts
 - Joint partnership with Dept of Agriculture, CSU & Farm Credit Services of Southern Colorado
 - Two concurrent phases
 - generate estimates of the direct, indirect, and induced economic impacts to other, agriculture-related industries.
 - describe the managerial response of producers, identifying the current financial standing & assessing their ability to respond to both financial challenges and opportunities

Questions?



Taryn Hutchins-Cabibi

Office of Water Conservation & Drought Planning

taryn.hutchins-cabibi@state.co.us

303.866.3441 X3231