

Water Availability Task Force

Wildfire Task Force March 17, 2011

Rich Homann
Fire Division Supervisor
Colorado State Forest Service



Wildland Fire: An unplanned, unwanted wildland fire including unauthorized human-caused fires, escaped wildland fire use events, escaped prescribed fire projects, and all other wildland fires where the objective is to put the fire out.

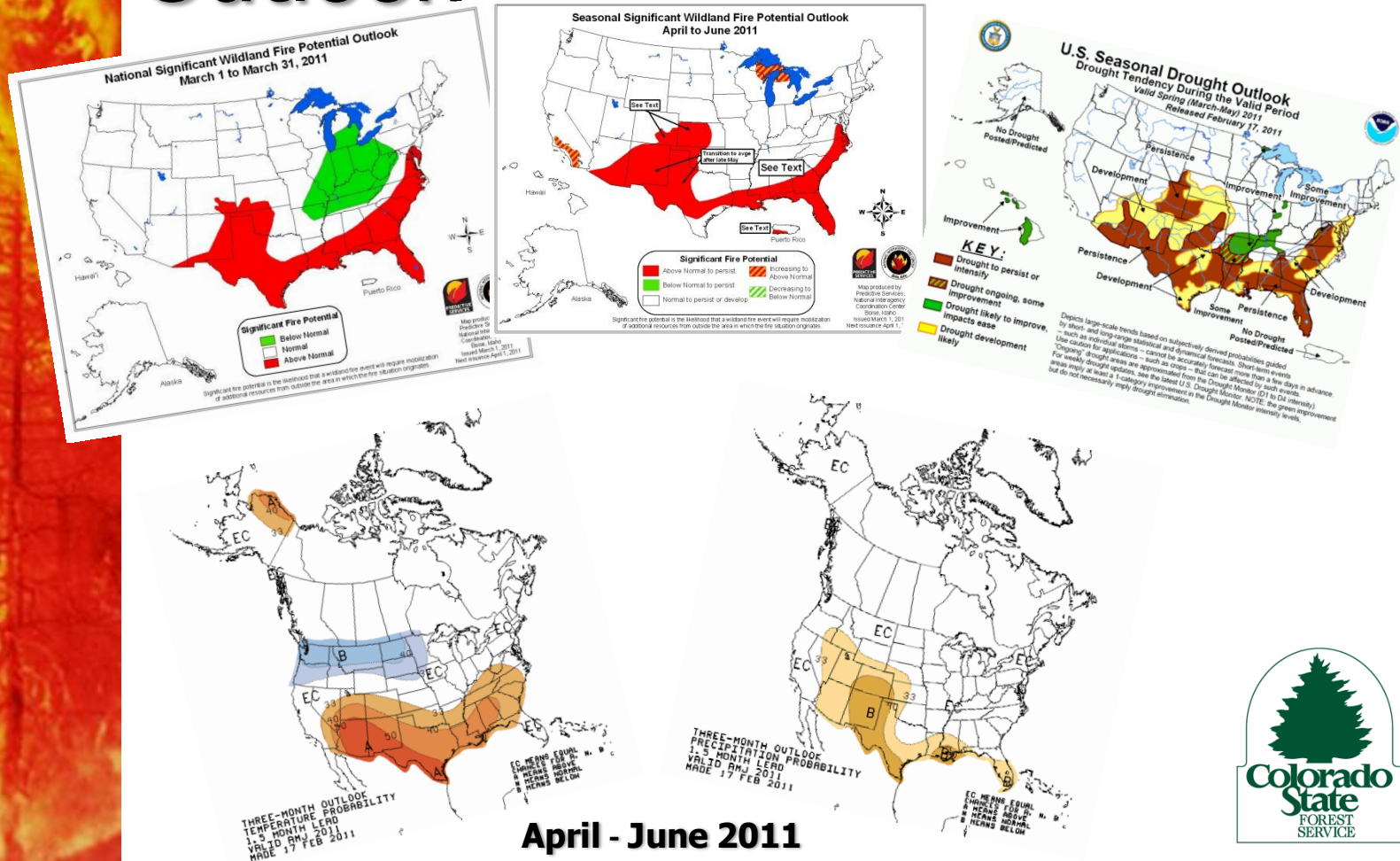


Wildfire: From Beginning to End



Wildfire in Colorado

Outlook





Wildfire in Colorado

Outlook

Rocky Mountain: Significant precipitation deficits in the last 30 to 60 days continue over the Rocky Mountain area over the southeast plains of Colorado into central and southern Kansas, which is consistent with moderate to strong La Niña conditions.

Drought indices show moderate values east of the divide in Colorado, Kansas, and western Nebraska, with severe indices in southeast Colorado and western Kansas.

Occasional warm, dry, and windy prefrontal conditions combined with abundant cured 1-hour fuels are expected to result in above normal significant fire potential over the plains of southeast Colorado and southwest Kansas during March.

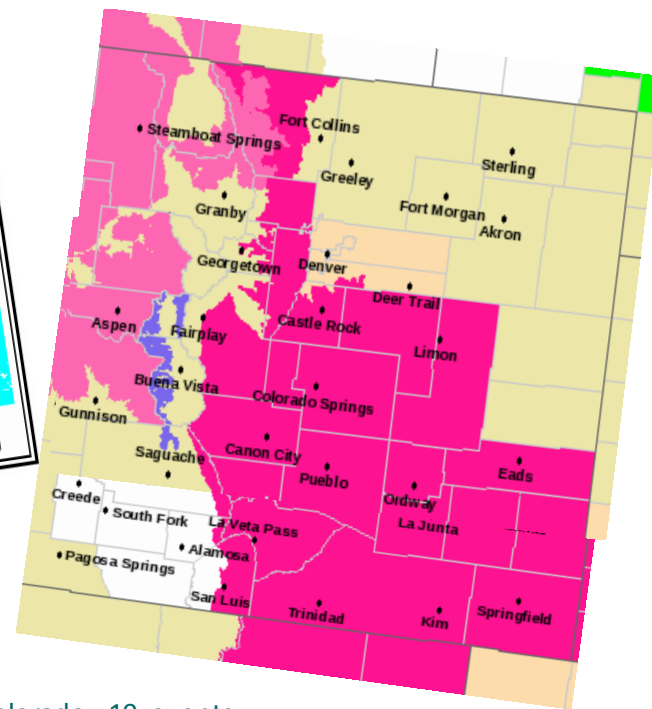
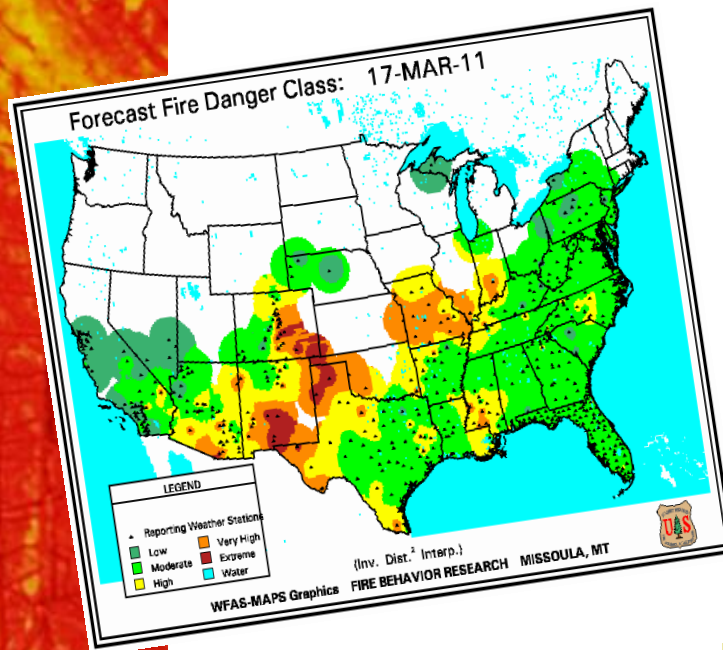
A moderate to strong La Niña is forecast to persist in April before weakening from May through June. This climatic pattern could lead to more frequent than average warm, dry and windy periods east of the divide, especially over southeast Colorado and Kansas during the pre-green period of April into early May.

The more frequent warm, dry, and windy conditions combined with abundant cured 1-hour fuels increases the likelihood of above normal significant fire potential for southeast Colorado and Kansas during the period of April into early May.



Wildfire in Colorado

Forecast and Observations



Pueblo National Weather Station - SE Colorado - 10 events
Boulder National Weather Station - NE Colorado - 3 events



Wildfire in Colorado

Preparedness



Wildfire in Colorado

Issues

- ☐ Jurisdictions
 - ☐ Entering Private Land
 - ☐ Resource Ordering Decisions
 - ☐ Tactical Decisions on the Fire
 - ☐ Damages During Suppression
 - ☐ Investigation
- ☐ Evacuation
 - ☐ Sheltering
 - ☐ Limiting Access
 - ☐ Use of Private Land
 - ☐ Resource Ordering
- ☐ Cost of Mobilizing
 - ☐ Who Pays
 - ☐ Restitution
 - ☐ Cost Share
 - ☐ Mutual Aide



