

COLORADO WATER CONSERVATION BOARD

Department of Natural Resources

Bill Owens, Governor

Greg Walcher, DNR Executive Director

Rod Kuharich, CWCB Director



San Juan / Dolores Basin Drought Impact Fact Sheet Water Division 7

Reservoir Storage

Reservoir storage is around 60 –70 % of average. No additional runoff is expected to impact reservoir storage. Jackson Gulch Reservoir is at about 25% of capacity and The Summit reservoir system is well below average.

Use of Storage

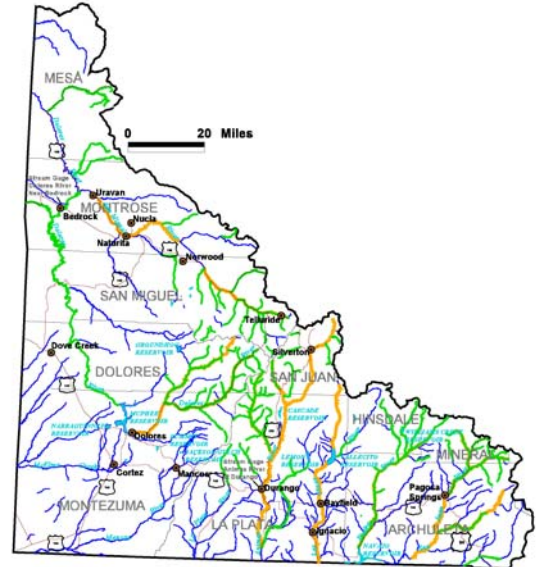
The Summit reservoir system, used for irrigation is so low the irrigation district is considering several operational options including canceling irrigation deliveries this year in favor of stock watering. The Durango water supply is at risk with the low storage/runoff at Lemon Reservoir.

Streamflow

The Summit reservoir system, used for irrigation is so low the irrigation district is considering several operational options including canceling irrigation deliveries this year in favor of stock watering. The Durango water supply is at risk with the low storage/runoff at Lemon Reservoir. Some of the basin streams runoff peaked in April for the year. The Average Snowpack was at 20% on April 8.

Water Administration

The McElmo Creek is on call. This is only the second time since 1977 that it has been on call. Elbert Creek is on call above Cascade Reservoir. Junction Creek is on call and the stream bottom is still dry from the Forest Service line into town. Delivery to the Senior Ditch was ruled futile this week.



For more information about this or other water resource topics, please contact the CWCB at:

1313 Sherman Street, Room 721, Denver, CO, 80203

Phone: (303) 866-3441 Fax: (303) 866-4474

Internet: www.cwcb.state.co.us