



Can Agriculture Do More With Less?

Governor's Conference on Managing Drought &

Climate Risk

John R. Stulp

Commissioner of Agriculture

October 9, 2008

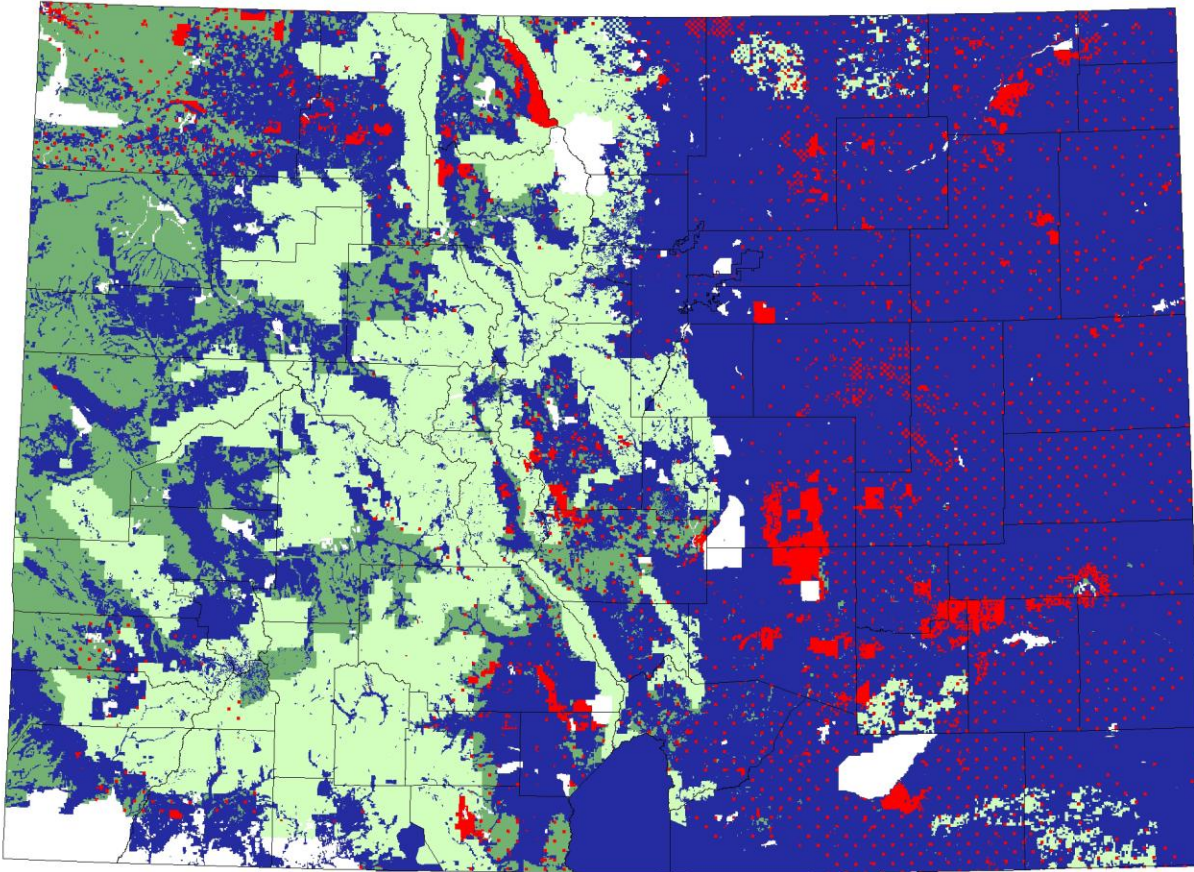
Snapshot of Colorado Agriculture



Photo courtesy of Rita Kleve

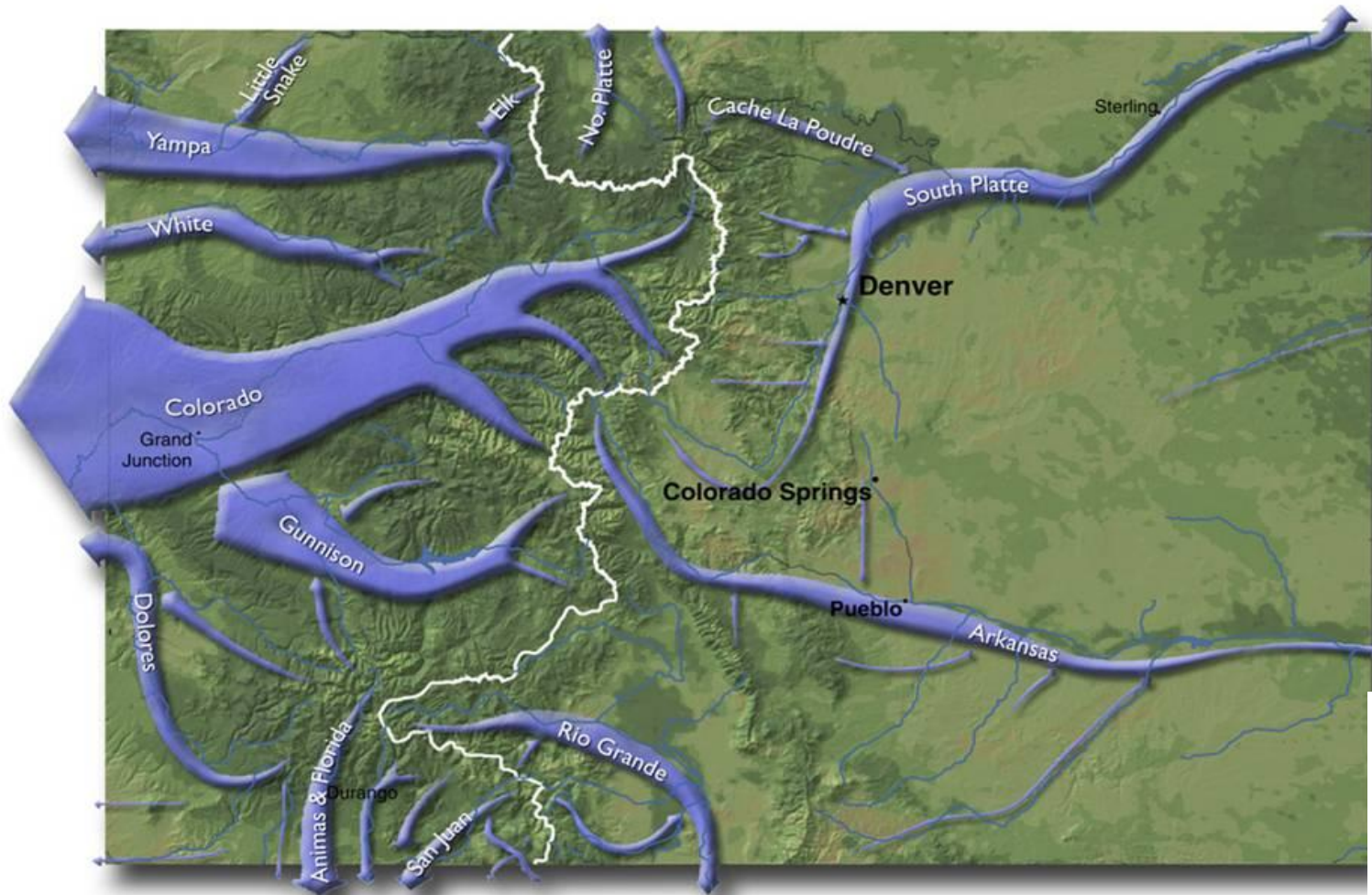
Agriculture Utilizes 76% of Colorado's Total Landmass

Colorado Land Ownership



- Blue – Private
- Red – State
- Dk Green – BLM
- Lt Green – USFS
- White - Other

Agriculture Utilizes 86% of Colorado's Water

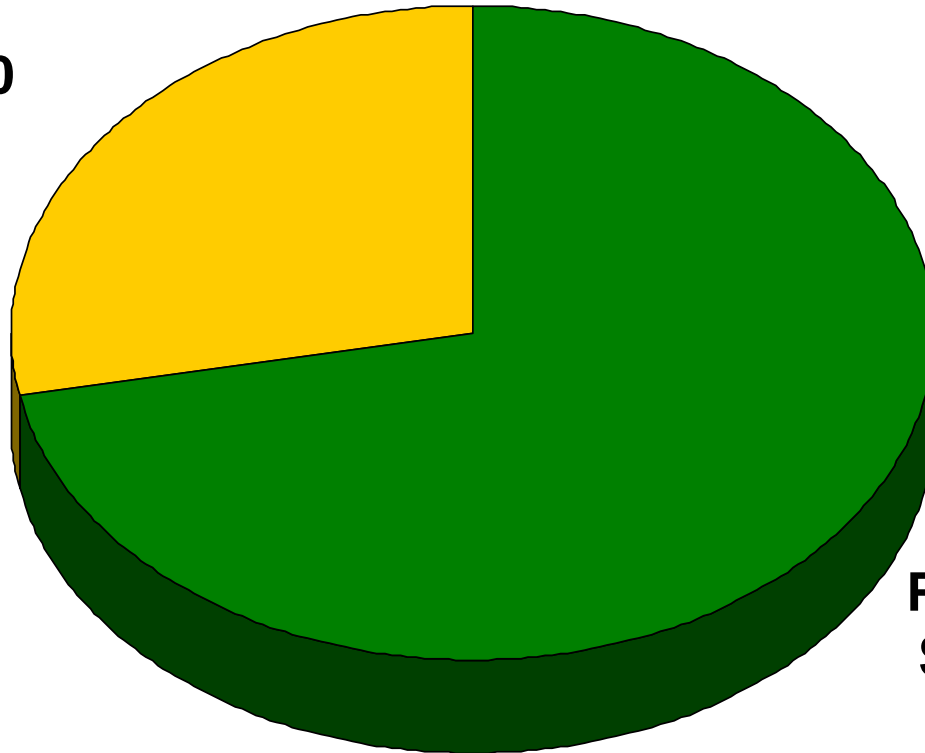


2006 Cash Receipts

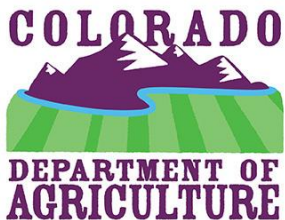
-By Market Sector-

Crops – 28%

\$1,585,277,000



**Livestock &
Products – 72%**
\$4,061,854,000

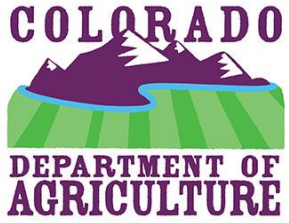


Colorado's Top 10

Based on 2006 cash receipts



		2006 Cash Receipts (Thousand \$)	U.S. Rank
#1	Cattle & calves	\$3,270,592	4 th for cattle on feed and fed cattle marketings 10 th for all cattle & calves
#2	Dairy (milk)	326,820	16 th in milk production and 17 th for milk cows
#3	Greenhouse & nursery	310,000	
#4	Corn for grain	295,844	15 th in production
#5	Hay	254,590	10 th in alfalfa production and 12 th overall
#6	Potatoes	206,985	5 th in all potato production
#7	Wheat	184,393	12 th in winter wheat and 15 th overall
#8	Hogs	181,982	11 th for pig crop and breeding hogs & pigs 15 th for all hogs & pigs and market hogs & pigs
#9	Poultry & eggs	119,000	23 rd in egg production and 25 th in layers
#10	Sheep & lambs	118,459	3 rd for market sheep & lambs, 4 th for all sheep & lambs and wool production, and 9 th for lamb crop
Total for Top 10		\$5,268,665	93.3% of total agricultural cash receipts



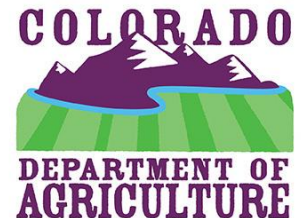
Agriculture's Impact on Colorado's Economy



Photo courtesy of Richard Gann

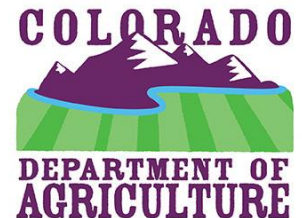
Economic Activity

- **Colorado's agriculture and food industry contributes nearly \$16 billion to the state's economy annually**
 - \$1.5 billion in farm inputs
 - \$5.6 billion in farm receipts
 - \$9 billion added through processing

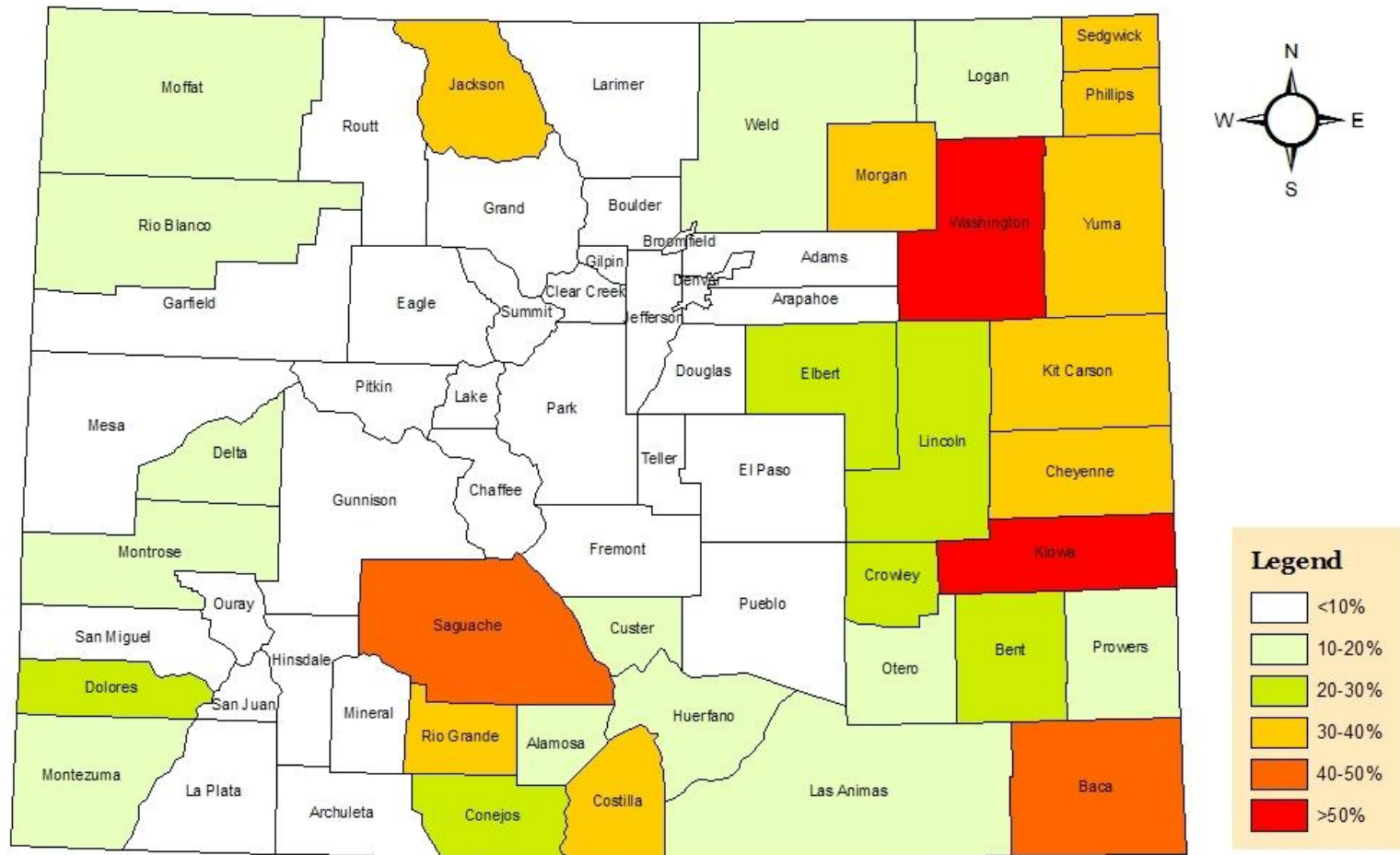


Jobs

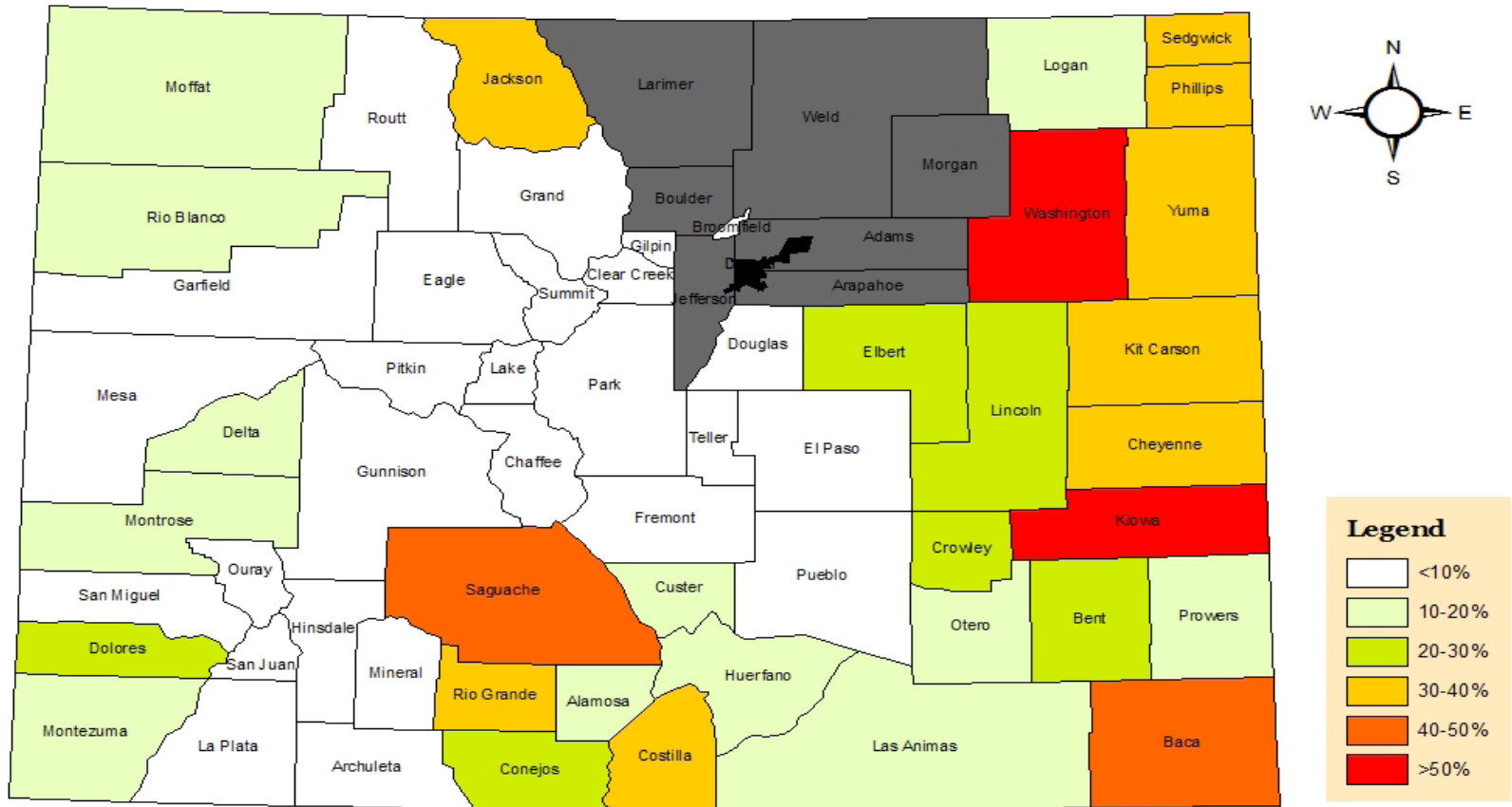
- **Colorado's agriculture & food industry supports more than 100,000 jobs in Colorado**
- **Many of Colorado's counties are "Ag-Dependent"**



“Ag-Dependent” Counties



Agricultural Jobs Are Not Just Rural



Jobs



13,778

Denver County

7,919

Weld County

5,675

Jefferson County

5,431

Adams County

4,933

Arapahoe County

3,485

Morgan County

3,181

Boulder County

2,572

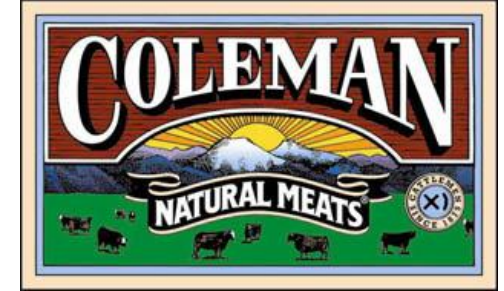
Larimer County

2,060

El Paso County

Companies with Corporate Headquarters in Colorado

CELESTIAL SEASONINGS

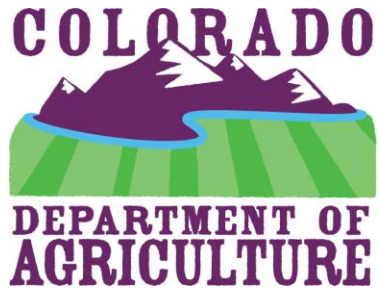


NEW BELGIUM



Companies with Significant Value-Added Processing in Colorado





Agriculture's job is to produce food

- 6.6 billion people in the world today
- 9 billion by 2050



Figure 1. Stocks-to-Use Ratio for Total Grains In the World (1960-2009)

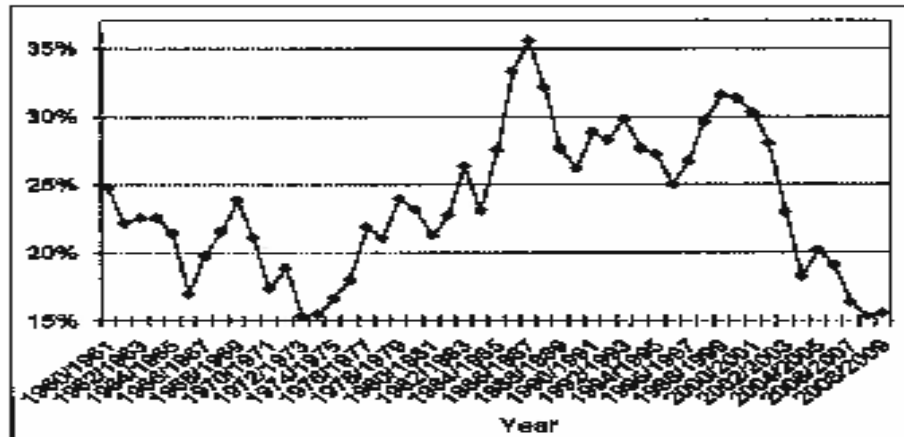
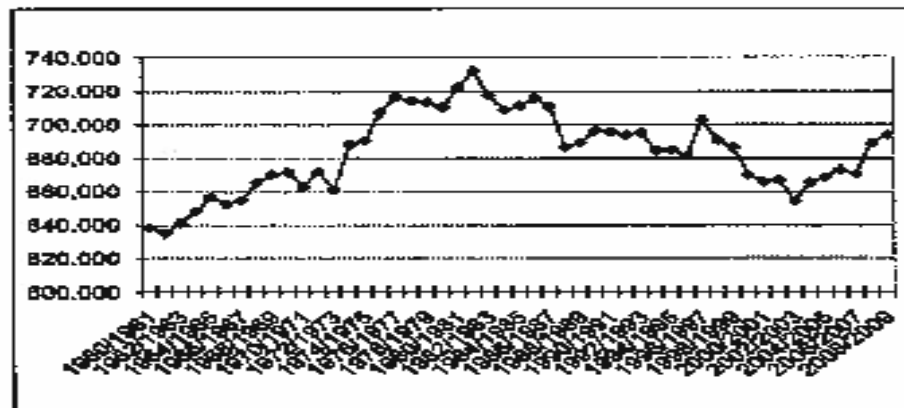
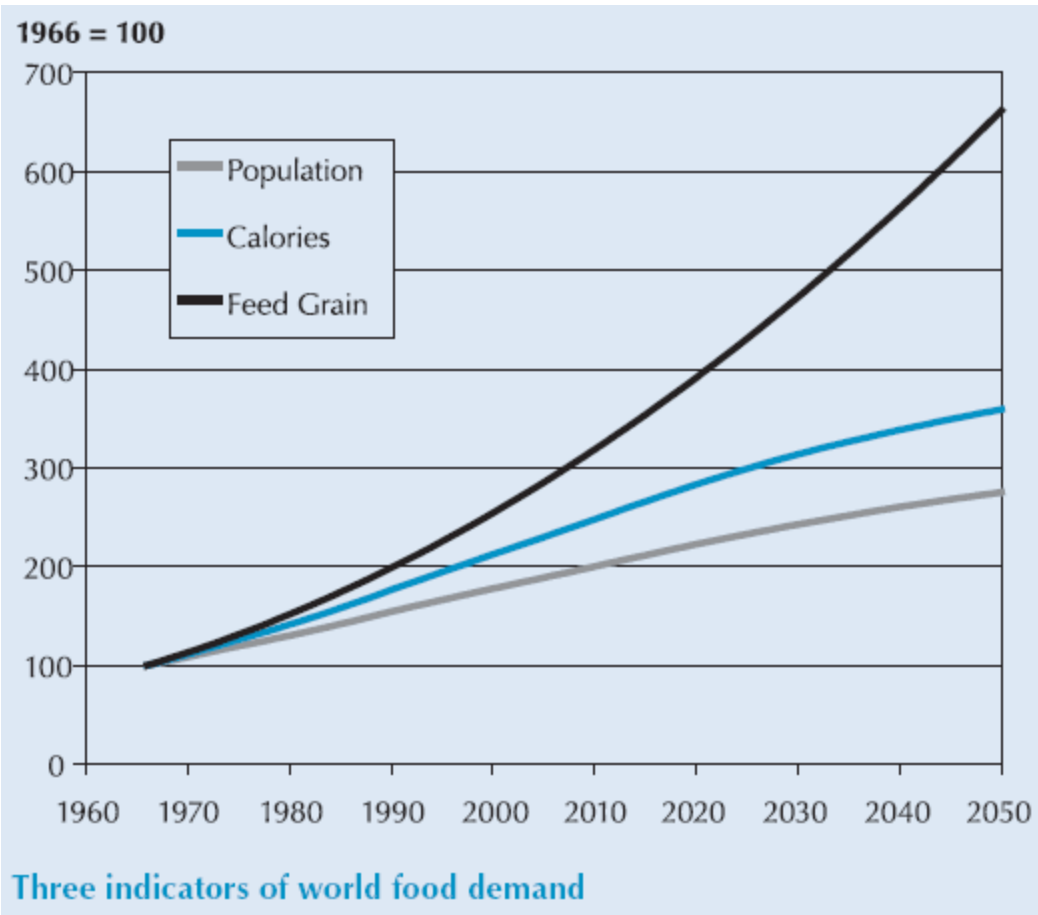
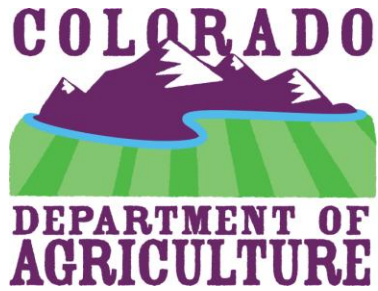


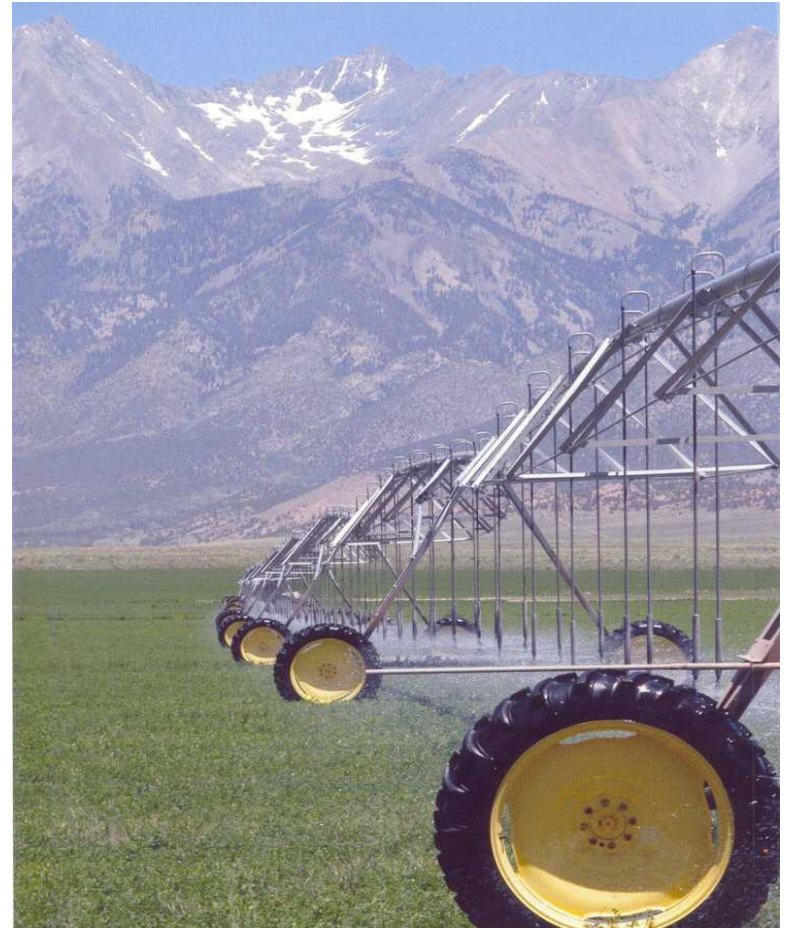
Figure 2. Area Harvested (1000 ha) for Total Grains in the World 1990-2009







- 1600 wells curtailed in the South Platte
- Perhaps the same could happen in the Republican
- Wells are being curtailed in the Rio Grande to maintain compliance with that river compact, and
- Rules are being developed to maintain compliance with the compact on the Arkansas

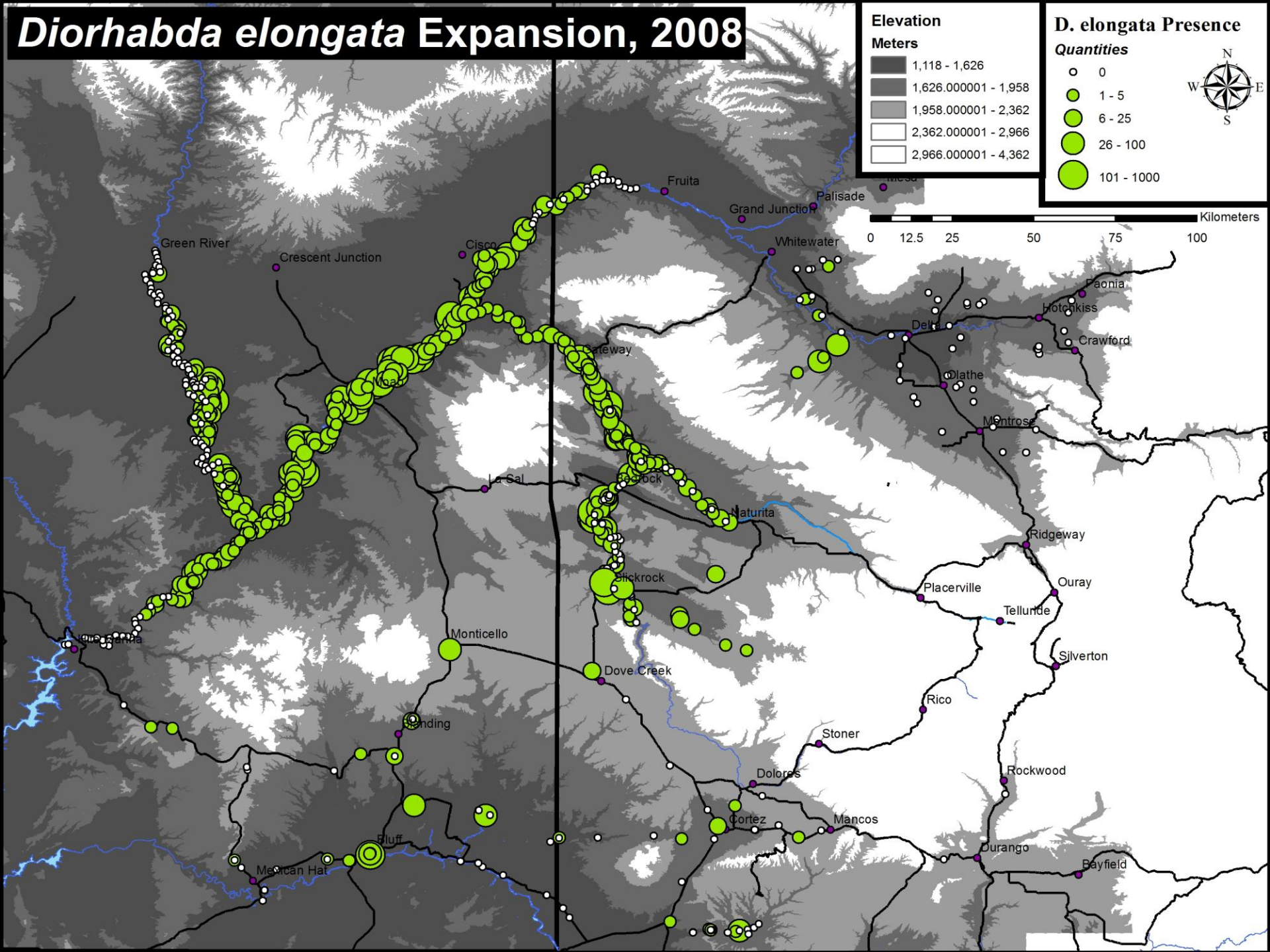


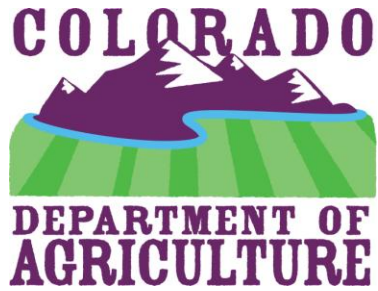
What can we do to mitigate drought, manage climate change, and maintain agricultural production?

- ✓ More research on drought resistant crops
- ✓ Increase utilization efficiencies
- ✓ Reduce plant competition



Diorhabda elongata Expansion, 2008





Thank you.

John R. Stulp
Colorado Commissioner of Agriculture
700 Kipling St., Suite 4000
Lakewood, CO 80215
303.239.4100
John.Stulp@ag.state.co.us

Commissioner John Stulp

Prowers County farmer and rancher John Stulp has been named commissioner of agriculture by Colorado Governor Bill Ritter. Stulp replaces Don Ament who served in the position for the past eight years.

“I am excited and honored to be asked to lead Colorado’s agricultural industry. I have big shoes to fill, and I look forward to the challenge,” Stulp said. “Like Bill Ritter, I grew up on a farm. I know the hard lessons of dry-land wheat farming and cattle ranching. I also know the good that the Department of Agriculture can provide to rural Colorado, from assisting with new opportunities like renewable energy to overcoming challenges posed by drought and disease.”

Stulp served as a Prowers County commissioner from 1991, when he was appointed to fill a vacancy, until January 2005. He also has served on numerous other boards and commissions, including the state Board of Agriculture (1986 to 1995), state Wildlife Commission (1995-99), the Connect Colorado technology committee (1996), and the Colorado Ag Development Authority & Value Added Board (2005-06).

A member of the Rocky Mountain Farmers Union since 1975, Stulp for the last several years has been a leading proponent of building wind farms in wheat fields as a way to develop new economic opportunities and jobs for Colorado’s farmers and ranchers. Stulp’s family farming operation is home to the Lamar Light and Power Wind Farm, and Stulp is a principal in Prairie Wind Energy LLC.

Stulp graduated from Yuma High School in 1966, earned his bachelor’s degree in veterinary science from Colorado State University in 1970 and his doctor of veterinary medicine from CSU in 1972. He and his wife, Jane, have five children.