

# Colorado Watershed Protection - Healthy Rivers Fund

COALITION FOR THE UPPER SOUTH PLATTE



Final Report  
2007 Award-0782  
July 21, 2009



Work is (finally) completed for the four key components of our Watershed Protection Fund grant. By Category:

#### Forest Restoration:

CUSP's crew has continued forest restoration efforts throughout the watershed, with a goal of reducing the risk of additional catastrophic fire. Funding from the grant was specifically used to help with our Neighborhood Fuel Reduction (aka chipper) program, that works with HOAs and large-property private landowners on property cleanup, and for helping operate the Divide Slash Site, which empowers individual small-lot owners to clean up their own yards and bring material to a central site. In 2007 and 2008 these programs received cash

funding from the City of Woodland Park (\$24,000), Teller County (\$40,000), and the participating landowners (\$34,298). Through these two programs CUSP helped private landowners protect approximately 3900 acres of fire prone lands.



### Environmental Education:

CUSP's Environmental Education

Coordinator has worked with students from throughout the Front Range and the watershed over the last two years. She has created valuable partnerships with the City of Aurora Forests to Faucets programs, led expeditionary learning in the watershed with such projects as the Happy Meadows monitoring program with Woodland Park High School (student's data is being used in developing the NEPA document for Happy Meadows), and the Tree-Cycle program which has students replanting in the Hayman with trees they grow in the classroom. Cash donations



that have helped support this program include Hillsdale Foundation (\$20,000); IREA (\$4,000), SPEB (\$12,000) Toshiba (\$9,000) and Captain Planet Foundation (\$6,500). Our EE coordinator logged 7100 student contact hours over two years and approximately 200 teach the teacher hours.

### Rampart Range:

In cooperation with the USFS and Wild Connections, CUSP helped with major restoration in the Rampart Range Motorized Recreation Area. Our crew and volunteers stabilized an area where OHV users were dropping off an existing road system by creating rock structures. We also created hardened crossing points on two stream crossings; completed two fencing projects, constructing 200' of post and rail fence using logs from onsite to preclude continued access by OHVs to sensitive hillslopes that drain directly into small tributary creeks to the South Platte; and closed about 200 feet of entry area on two trails, at both ends of each trail.



### Happy Meadows/Sportsman's:

Planning is still creeping along on this project, but it took an exciting turn since the application originally was submitted that will make it a far better project with much greater impact. At the time when the proposal was submitted our thought was that work would be restricted to the USFS Happy Meadows segment, but through two years of intensive work with an in-holding HOA, Sportsman's Paradise, we brought them into the project with a commitment to redevelop a diversion structure that has caused serious upstream and downstream ecosystem and habitat problems, a commitment to create a wetland on several acres of sediment fields

created by the old diversion structure (a cobbled together dam that is not stable, and would create even more problems if it failed in a high flow event), and a commitment to help reduce continuing sediment that comes from their roads and uplands! This means we will now be working on

approximately 8,000

feet of stream instead of 5,000 feet, and greatly improving habitat and water quality over what just doing the Happy Meadows portion would have yielded. We hope to implement construction in 2010. None of this would have happened without the support of the CWPFF. Funding from this grant specifically has been applied to developing the diversion redevelopment concept and planning time attributed to working with the private landowners on that specific piece. (Plans attached as PDF files.) Matching funds include CUSP cash toward contractors, CUSP staff time toward planning on both Happy Meadows and Sportsman's, and USFS planning time to date (as detailed below.)



**CWPF BILLABLE EXPENSE SUMMARY FOR THIS REPORT – HAPPY MEADOWS PLANNING**

Description	\$
CONTRACTOR: CRANE & ASSOCIATES	\$7,620.00
CONTRACTOR: FIN UP HABITAT CONSULTANTS	\$1,320.00
CUSP STAFF	\$4,193.00
<b>SUBTOTAL CASH EXPENSES</b>	<b>\$13,133.00</b>
<b>Total Grant Funds Requested</b>	<b>\$7,000.00</b>
CREDITED AS MATCH (CUSP Cash)	\$6,133.00
USFS In-Kind Match (Monitoring and data collection)	\$24,000.00
<b>Total Project Match</b>	<b>\$30,133.00</b>

**OVERALL FINAL SUMMARY DATA**

Description	\$
Grant Funds Requested for Rampart Range	\$7,500.00
Match Rampart Range	\$133,447.00
Grant Funds Requested for Env. Education	\$4,000.00
Match Environmental Education (From Hillsdale Foundation, Toshiba, IREA SPEB, Captain Planet)	\$51,500.00
Grant Funds Requested for Forest Restoration	\$3,500.00
Match Forest Restoration (From Teller County, Woodland Park, Landowners)	\$98,298.00
Grant Funds Requested for Happy Meadows	\$10,000.00
Match Happy Meadows (From SPEB, Sportsmen's Park County, CUSP Cash)	\$30,133.00
<b>Total Projects</b>	<b>\$338,378.00</b>

# Rampart Range

## OHV AREA STABILIZATION



COALITION FOR THE UPPER SOUTH PLATTE  
April 9, 2009





Work on the Rampart Range portion of our Watershed Protection Fund grant has now been completed. Volunteers put in 307 hours at two different sites in the Rampart Range area. They worked at stabilizing an area where OHV users were dropping off an existing road system by creating rock structures, and creating hardened crossing points on two stream crossings; and they completed two fencing projects, constructing 200' of post and rail fence using logs from onsite to preclude continued access by OHVs to sensitive

hillslopes that drain directly into small tributary creeks to the South Platte.

#### OVERALL SUMMARY – Rampart Range

Description	\$
Total Grant Funds Requested for Rampart Range To Date	\$7,500.00
Total CUSP Cash Match	\$827.78
Total In-Kind Match	\$3619.64
USFS Cash Match	\$129,000.00
<b>Total</b>	\$140,947.42.

#### CWPF BILLABLE EXPENSE SUMMARY – Rampart Range

Description	\$
ROCK (172 TONS@26.18 delivered)	\$4,502.96
SEED (102 @ 6.25)	\$637.50
MISC FENCING SUPPLIES (NUTS, BOLTS, WASHERS, ETC.)	\$133.08
GENERATOR RENTAL	\$85.00
FUEL	\$138.00
PROJECT MANAGEMENT (100.17 HOURS@20)	\$2003.40
<b>Total</b>	\$7,500



SPORTSMEN'S PARADISE  
IRRIGATION DIVERSION RECONSTRUCTION  
& HABITAT ENHANCEMENT PROJECT  
PRELIMINARY—NOT FOR CONSTRUCTION

PREPARED FOR:

COALITION for the UPPER SOUTH PLATTE  
PO BOX 726  
LAKE GEORGE, CO 80627

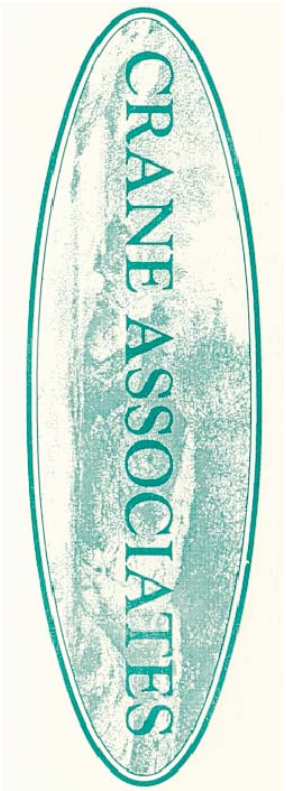
NOTES:

- 1. Existing stream cross section data was obtained on site on March 20, 2009
- 2. Flow data for the site was obtained from the "South Platte River near Lake George" gage (PLAGEOCO) operated by the Colorado Division of Water Resources.
- 3. These plans are conceptual in nature and intended to be used for comments by landowners.

PROJECT LOCATION:

SOUTH PLATTE RIVER  
NE 1/4; NE 1/4 Section 8, T12S, R71W  
PARK COUNTY, COLORADO  
LAT: 39.0266 / LONG:105.3507

PREPARED BY:



INDEX OF DRAWINGS:

- 1. OVERALL PLAN VIEW
- 2. CHANNEL PROFILE
- 3. TYPICAL CROSS SECTIONS
- 4--11 CROSS SECTIONS
- 12--14 DETAILS

29163 STINGLEY GULCH ROAD  
HOTCHKISS, CO 81419  
(970) 872-2433

MAY 2009

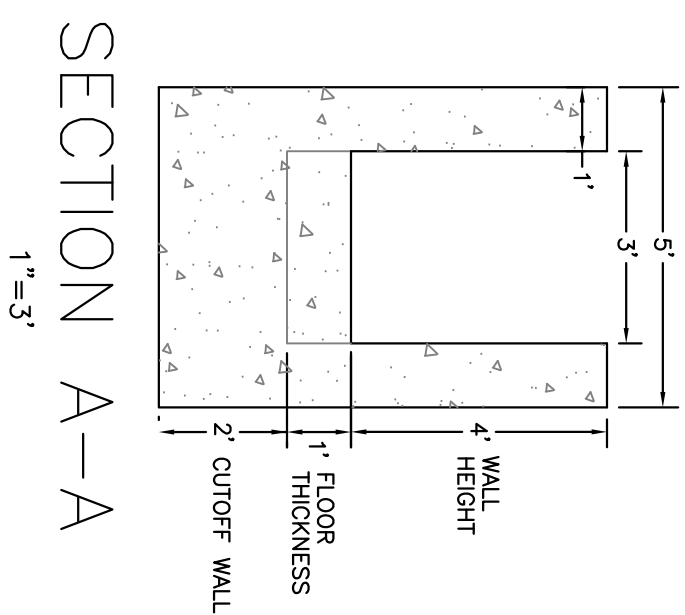
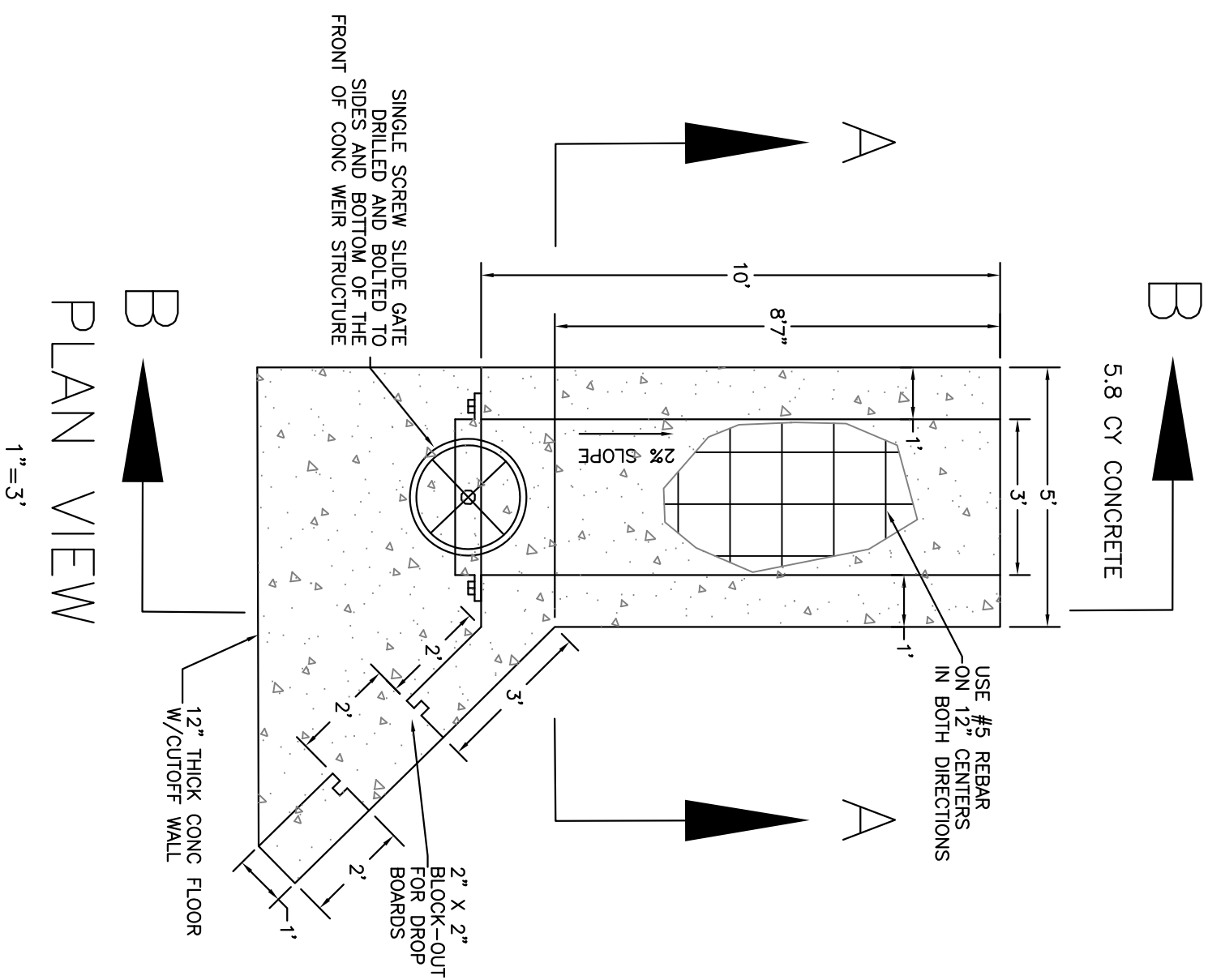


**CRANE ASSOCIATES**  
29163 Stingly Gulch Road  
Hotchkiss, Colorado 81419  
Phone (970) 872-2433

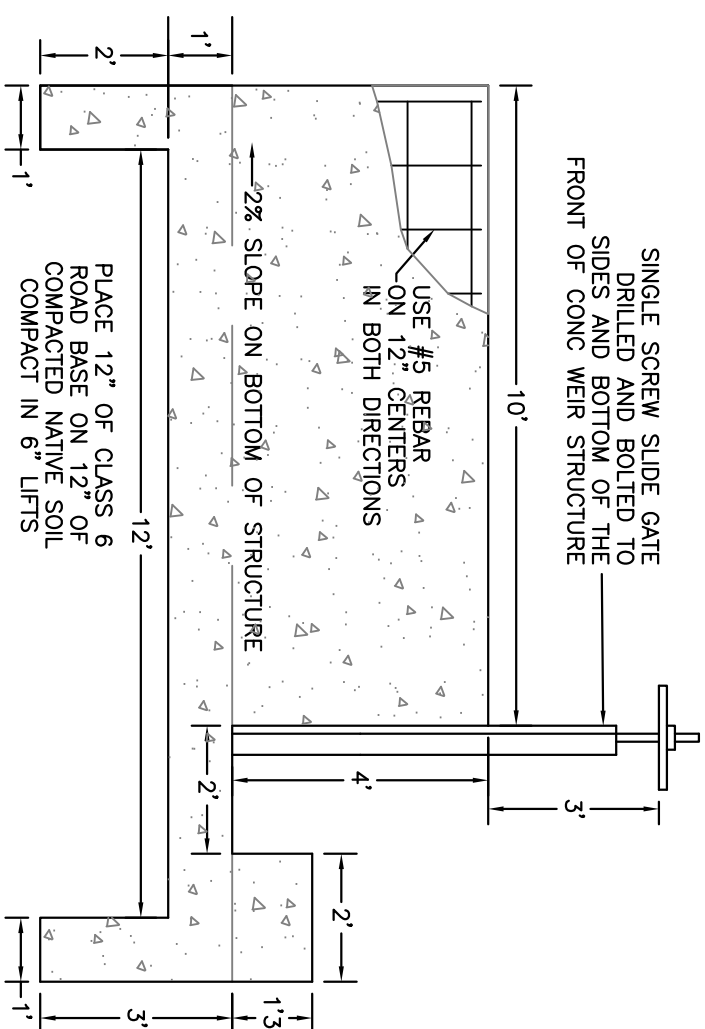
Designed by:	JEFF CRANE
Dwn by:	JPC
Reviewed by:	
Submitted by:	

Date: May, 2009
Design file no:
Drawing Code:
File name: Plot date: Plot scale:

[illegible]



# SECTION A-A



## SECTION B-B

[illegible]

Designed by: JEFF CRANE		Date: May, 2009	Rev.
Dwn by: JPC	Ckd by:	Design file no:	
Reviewed by:		Drawing Code:	
Submitted by:		File name: Plot date: Plot code:	

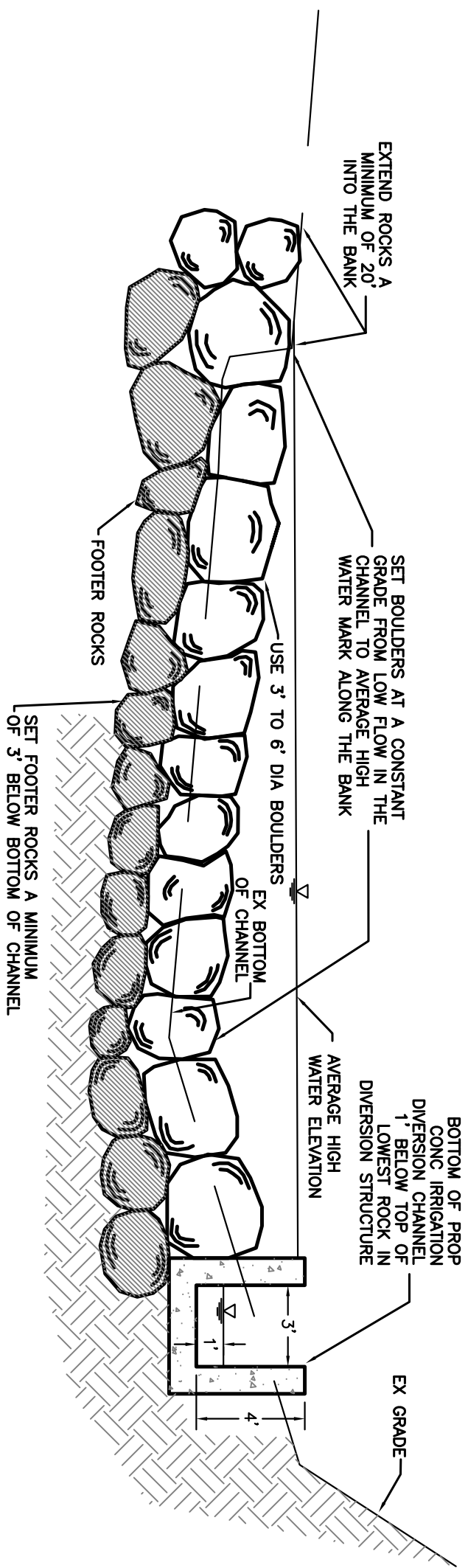
**CRANE ASSOCIATES**  
29163 Stingly Gulch Road  
Hotchkiss, Colorado 81419  
Phone (970) 872-2433

**SPORTSMAN'S PARADISE**  
IRRIGATION RELOCATION &  
HABITAT ENHANCEMENT PROJECT  
PARK COUNTY, COLORADO  
HEADGATE DETAILS

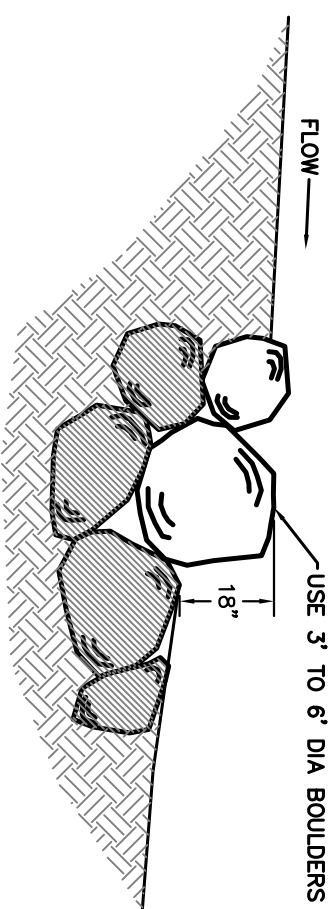
Sheet  
reference  
number:

Sheet 12 of 14

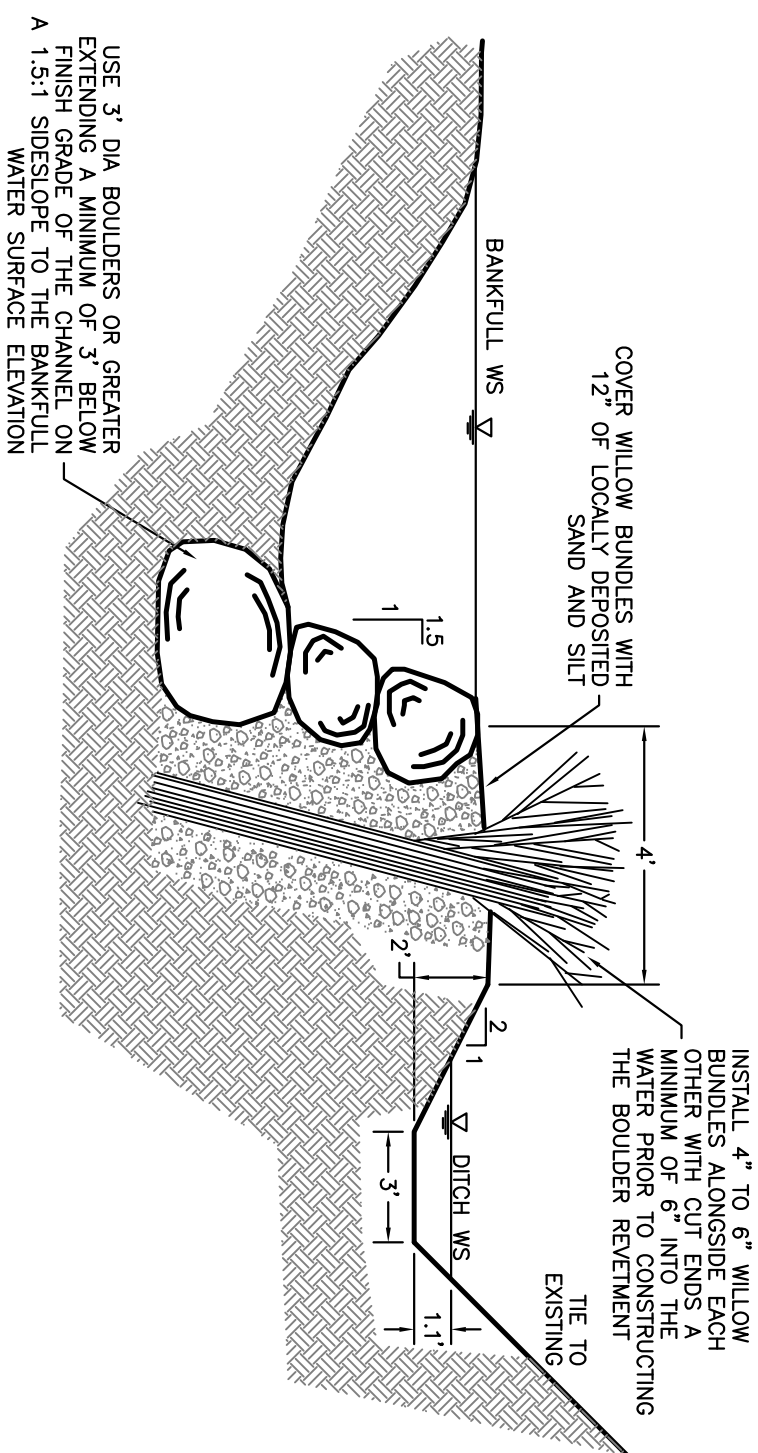




## DIVERSION STRUCTURE CROSS SECTION



## DIVERSION STRUCTURE PROFILE



# DITCH & BANK REVETMENT DETAIL

[illegible]

Designed by: JEFF CRANE		Date: May, 2009	Rev.
Dwn by: JPC	Ckd by:	Design file no:	
Reviewed by:		Drawing Code:	
Submitted by:		File name:	
		Plot date:	
		Plot scale:	

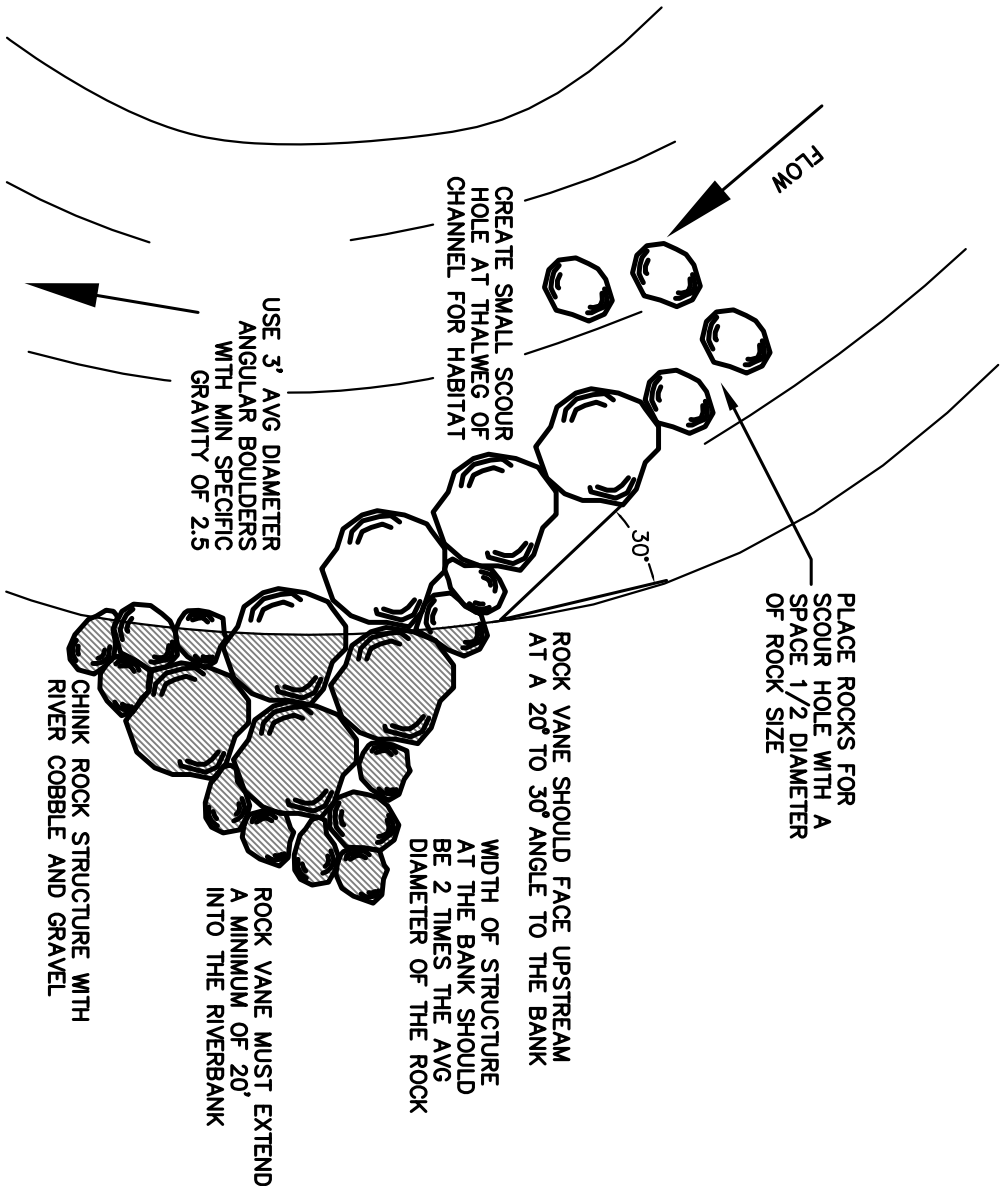
**CRANE ASSOCIATES**  
29163 Stingly Gulch Road  
Hotchkiss, Colorado 81419  
Phone (970) 872-2433

## SPORTSMAN'S PARADISE IRRIGATION RELOCATION & HABITAT ENHANCEMENT PROJECT PARK COUNTY, COLORADO DIVERSION STRUCTURE DETAILS

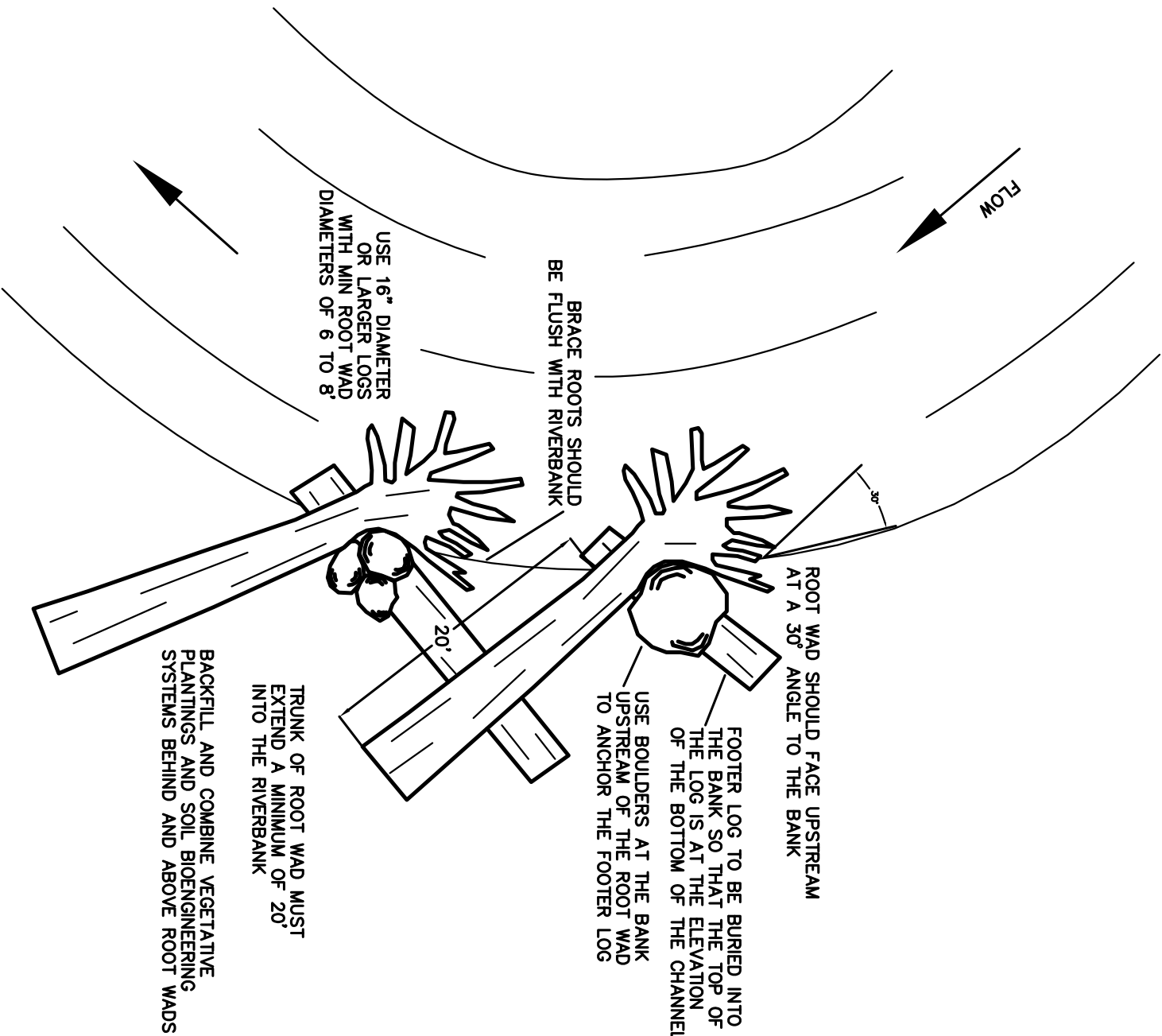
Sheet  
reference  
number:

Sheet 13 of 14

## UPDATE



J-HOOK DETAIL  
NTS

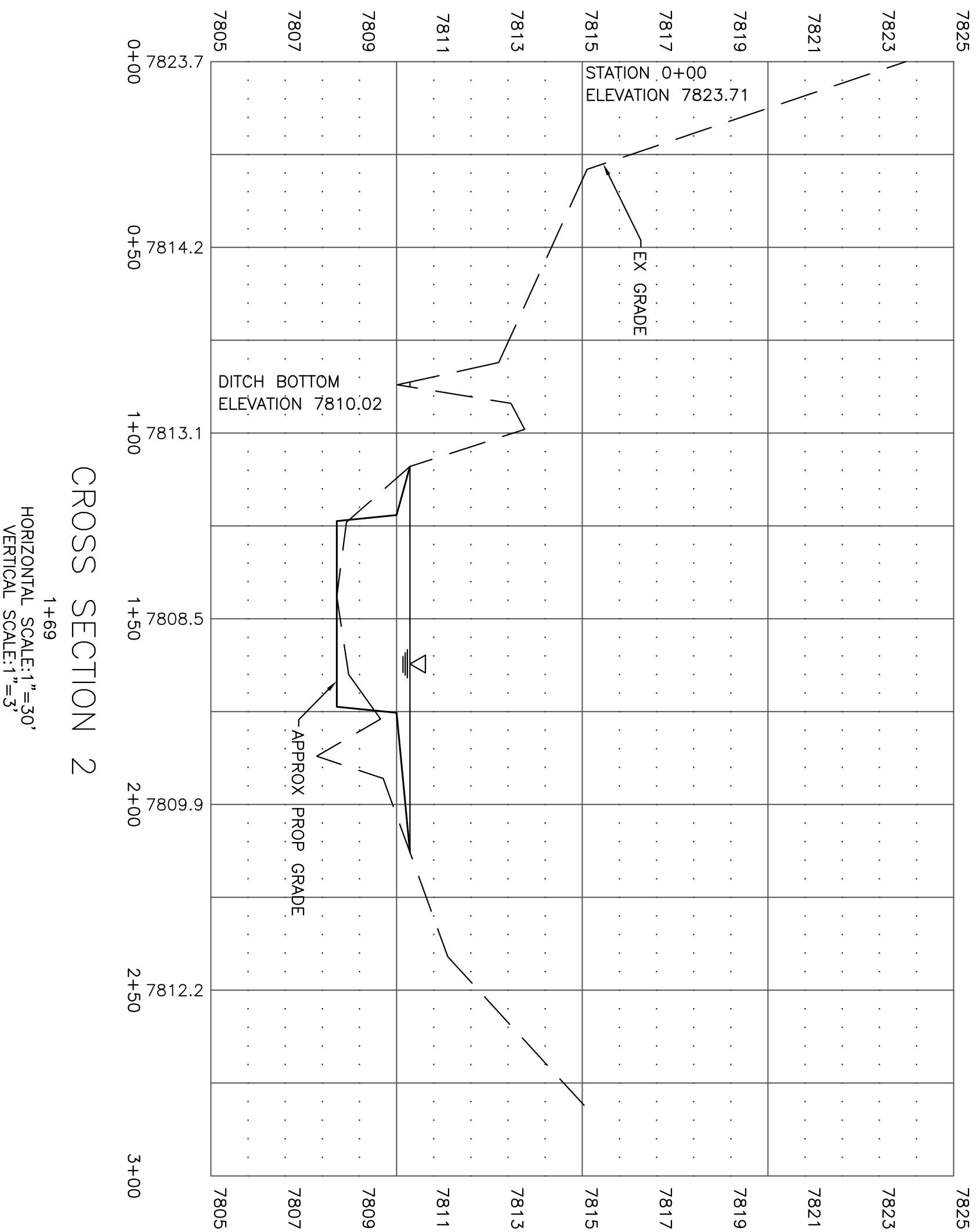


ROOT WAD REVELTMENT DETAIL  
NTS









## CROSS SECTION 2

1+69

HORIZONTAL SCALE: 1"=30'

VERTICAL SCALE: 1"=3'

Designed by: JEFF CRANE		Date: May, 2009	Rev.
Dwn by: JPC	Ckd by:	Design file no:	
Reviewed by:		Drawing Code:	
Submitted by: _____		File name: Plot date: Plot scale:	

Date: May, 2009	Rev.
Design file no:	
Drawing Code:	
File name:	
Plot date:	
Plot scale:	

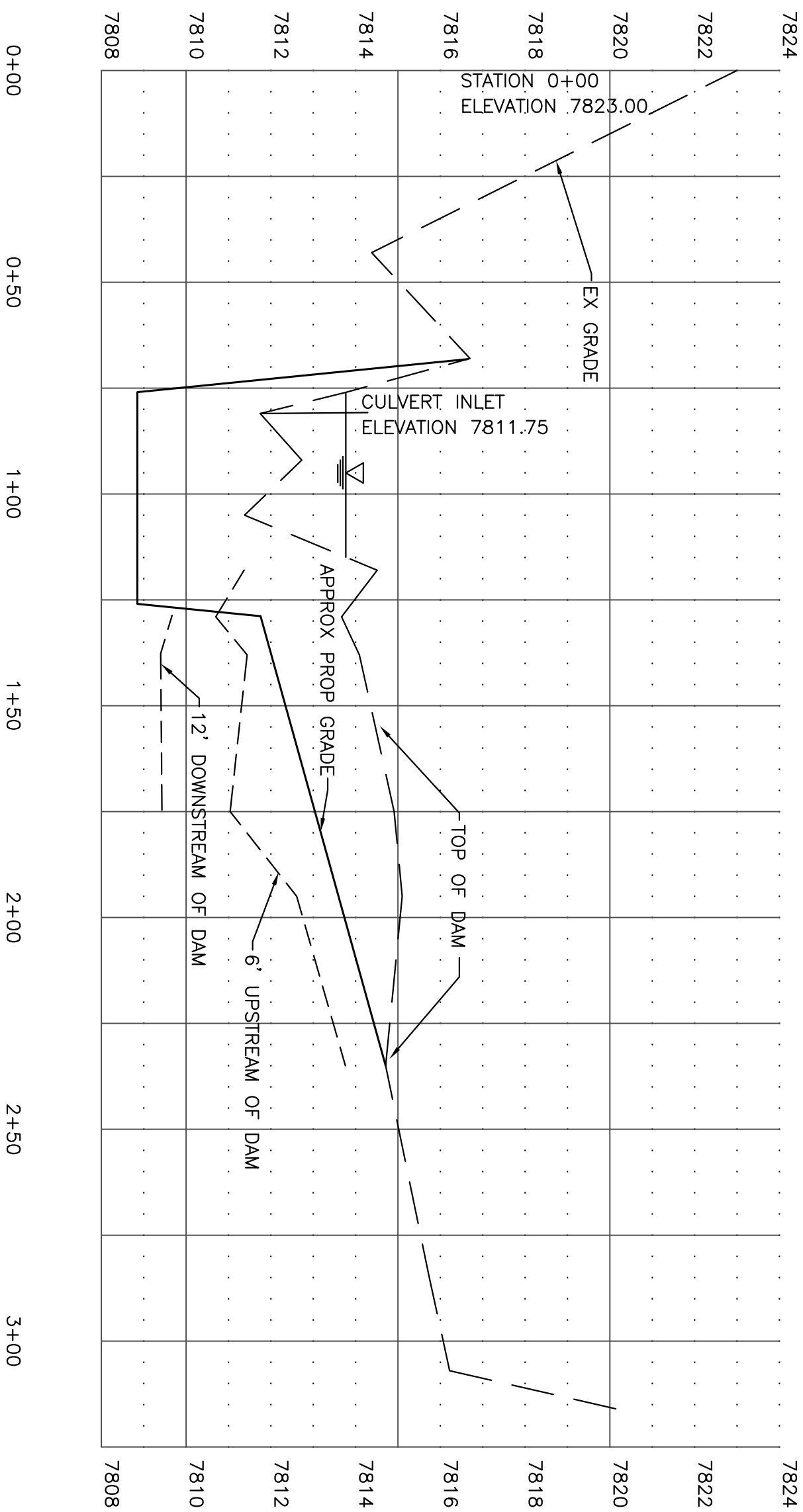
**CRANE ASSOCIATES**  
29163 Stingly Gulch Road  
Hotchkiss, Colorado 81419  
Phone (970) 872-2433

**SPORTSMAN'S PARADISE**  
IRRIGATION RELOCATION &  
HABITAT ENHANCEMENT PROJECT  
PARK COUNTY, COLORADO  
CHANNEL CROSS SECTIONS

Sheet  
reference  
number:

Sheet 4 of 14

## UPDATE



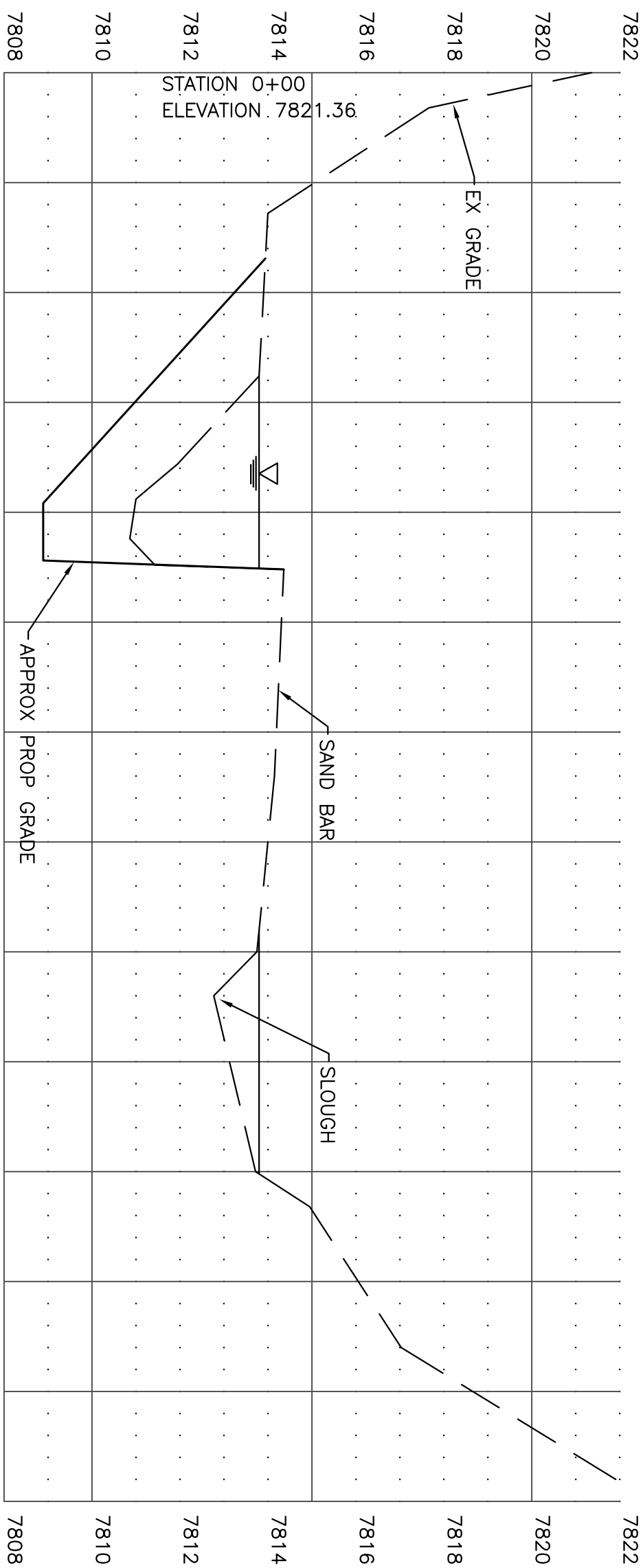
## CROSS SECTION 3

2+17

HORIZONTAL SCALE: 1"=30'  
VERTICAL SCALE: 1"=3'

[illegible]

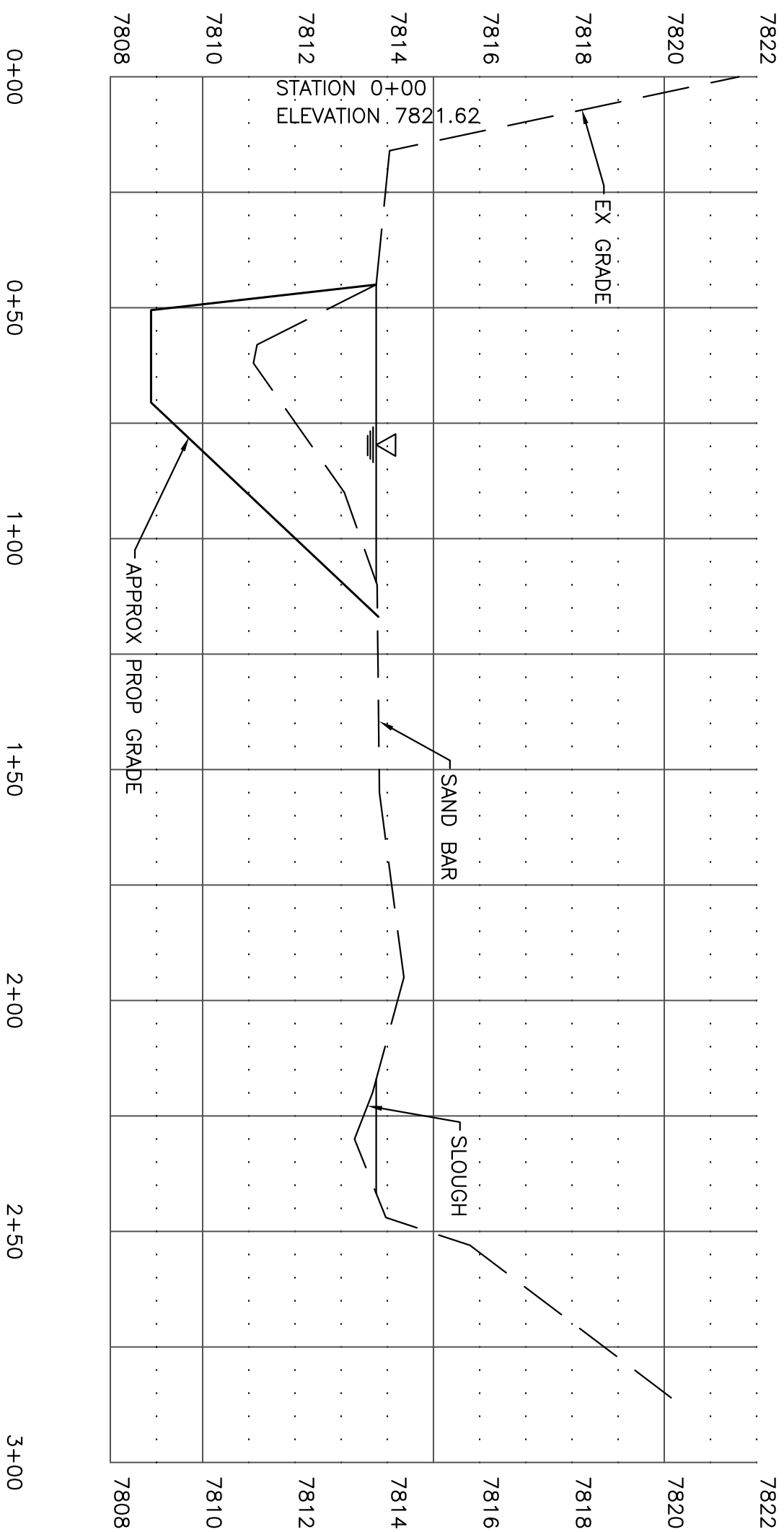




## CROSS SECTION 4

2+78  
HORIZONTAL SCALE:1"=30'  
VERTICAL SCALE:1"=3'

[illegible]



## CROSS SECTION 5

 $3+75$ 

HORIZONTAL SCALE: 1"=30'  
VERTICAL SCALE: 1"=3'

Sheet  
reference  
number:  
  
Sheet 7 of 14

SPORTSMAN'S PARADISE

IRRIGATION RELOCATION &  
HABITAT ENHANCEMENT PROJECT  
PARK COUNTY, COLORADO  
CHANNEL CROSS SECTIONS

CRANE ASSOCIATES

29163 Stingly Gulch Road  
Hotchkiss, Colorado 81419  
Phone (970) 872-2433

Designed by:  
JEFF CRANE

Dwn by:  
JPC

Reviewed by:

Submitted by:

Ckd by:

Date:  
May, 2009

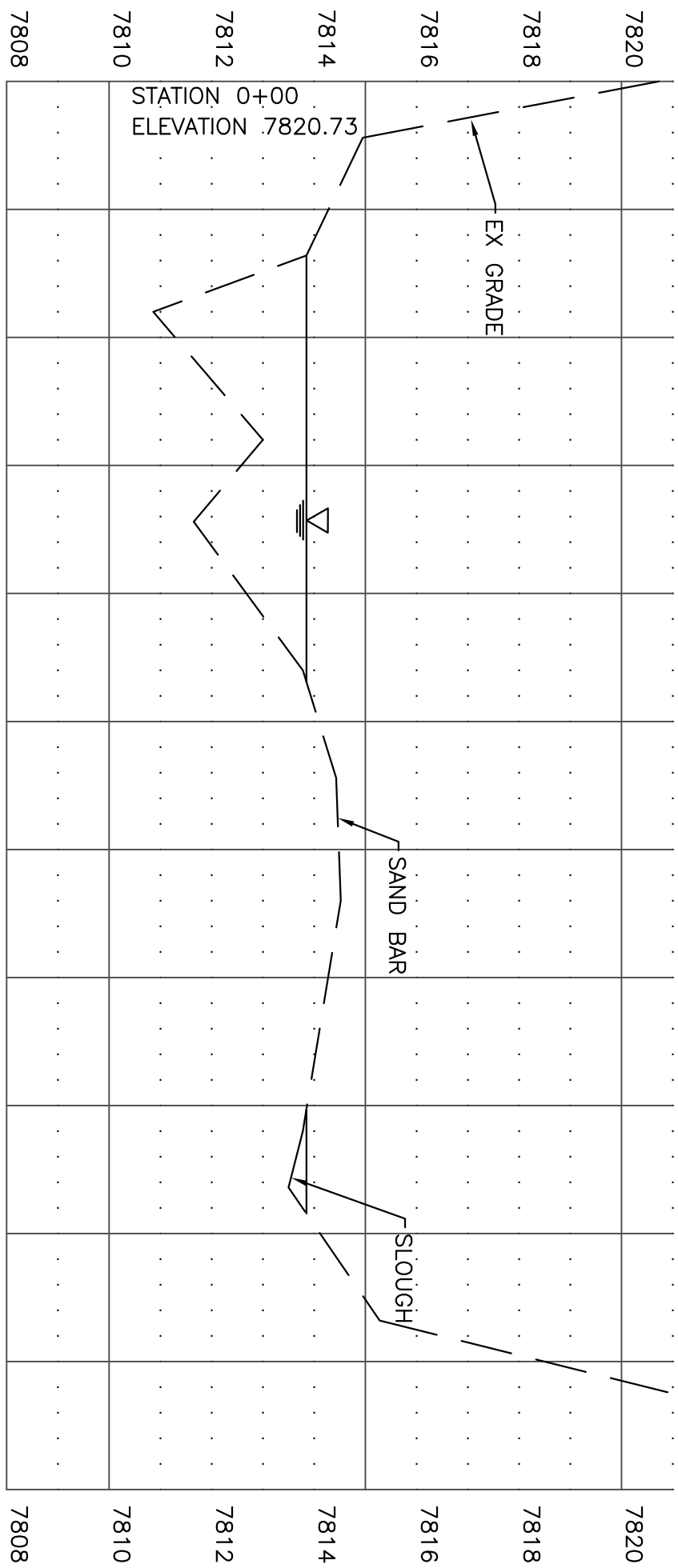
Design file no:

Drawing Code:

File name:  
Plot date:  
Plot scale:

Rev.

--	--	--	--	--	--	--	--	--	--	--	--	--	--	--	--	--	--	--	--	--	--	--	--	--	--	--	--	--	--	--	--	--	--	--	--	--	--	--	--	--	--	--	--	--	--	--	--	--	--	--	--	--	--	--	--	--	--	--	--	--	--	--	--	--	--	--	--	--	--	--	--	--	--	--	--	--	--	--	--	--	--	--	--	--	--	--	--	--	--	--	--	--	--	--	--	--	--	--	--	--	--	--	--	--	--	--	--	--	--	--	--	--	--	--	--	--	--	--	--	--	--	--	--	--	--	--	--	--	--	--	--	--	--	--	--	--	--	--	--	--	--	--	--	--	--	--	--	--	--	--	--	--	--	--	--	--	--	--	--	--	--	--	--	--	--	--	--	--	--	--	--	--	--	--	--	--	--	--	--	--	--	--	--	--	--	--	--	--	--	--	--	--	--	--	--	--	--	--	--	--	--	--	--	--	--	--	--	--	--	--	--	--	--	--	--	--	--	--	--	--	--	--	--	--	--	--	--	--	--	--	--	--	--	--	--	--	--	--	--	--	--	--	--	--	--	--	--	--	--	--	--	--	--	--	--	--	--	--	--	--	--	--	--	--	--	--	--	--	--	--	--	--	--	--	--	--	--	--	--	--	--	--	--	--	--	--	--	--	--	--	--	--	--	--	--	--	--	--	--	--	--	--	--	--	--	--	--	--	--	--	--	--	--	--	--	--	--	--	--	--	--	--	--	--	--	--	--	--	--	--	--	--	--	--	--	--	--	--	--	--	--	--	--	--	--	--	--	--	--	--	--	--	--	--	--	--	--	--	--	--	--	--	--	--	--	--	--	--	--	--	--	--	--	--	--	--	--	--	--	--	--	--	--	--	--	--	--	--	--	--	--	--	--	--	--	--	--	--	--	--	--	--	--	--	--	--	--	--	--	--	--	--	--	--	--	--	--	--	--	--	--	--	--	--	--	--	--	--	--	--	--	--	--	--	--	--	--	--	--	--	--	--	--	--	--	--	--	--	--	--	--	--	--	--	--	--	--	--	--	--	--	--	--	--	--	--	--	--	--	--	--	--	--	--	--	--	--	--	--	--	--	--	--	--	--	--	--	--	--	--	--	--	--	--	--	--	--	--	--	--	--	--	--	--	--	--	--	--	--	--	--	--	--	--	--	--	--	--	--	--	--	--	--	--	--	--	--	--	--	--	--	--	--	--	--	--	--	--	--	--	--	--	--	--	--	--	--	--	--	--	--	--	--	--	--	--	--	--	--	--	--	--	--	--	--	--	--	--	--	--	--	--	--	--	--	--	--	--	--	--	--	--	--	--	--	--	--	--	--	--	--	--	--	--	--	--	--	--	--	--	--	--	--	--	--	--	--	--	--	--	--	--	--	--	--	--	--	--	--	--	--	--	--	--	--	--	--	--	--	--	--	--	--	--	--	--	--	--	--	--	--	--	--	--	--	--	--	--	--	--	--	--	--	--	--	--	--	--	--	--	--	--	--	--	--	--	--	--	--	--	--	--	--	--	--	--	--	--	--	--	--	--	--	--	--	--	--	--	--	--	--	--	--	--	--	--	--	--	--	--	--	--	--	--	--	--	--	--	--	--	--	--	--	--	--	--	--	--	--	--	--	--	--	--	--	--	--	--	--	--	--	--	--	--	--	--	--	--	--	--	--	--	--	--	--	--	--	--	--	--	--	--	--	--	--	--	--	--	--	--	--	--	--	--	--	--	--	--	--	--	--	--	--	--	--	--	--	--	--	--	--	--	--	--	--	--	--	--	--	--	--	--	--	--	--	--	--	--	--	--	--	--	--	--	--	--	--	--	--	--	--	--	--	--	--	--	--	--	--	--	--	--	--	--	--	--	--	--	--	--	--	--	--	--	--	--	--	--	--	--	--	--	--	--	--	--	--	--	--	--	--	--	--	--	--	--	--	--	--	--	--	--	--	--	--	--	--	--	--	--	--	--	--	--	--	--	--	--	--	--	--	--	--	--	--	--	--	--	--	--	--	--	--	--	--	--	--	--	--	--	--	--	--	--	--	--	--	--	--	--	--	--	--	--	--	--	--	--	--	--	--	--	--	--	--	--	--	--	--	--	--	--	--	--	--	--	--	--	--	--	--	--	--	--	--	--	--	--	--	--	--	--	--	--	--	--	--	--	--	--	--	--	--	--	--	--	--	--	--	--	--	--	--	--	--	--	--	--	--	--	--	--	--	--	--	--	--	--	--	--	--	--	--	--	--	--	--	--	--	--	--	--	--	--	--	--	--	--	--	--	--	--	--	--	--	--	--	--	--	--	--	--	--	--	--	--	--	--	--	--	--	--	--	--	--	--	--	--	--	--	--	--	--	--	--	--	--	--	--	--	--	--	--	--	--	--	--	--	--	--	--	--	--	--	--	--	--	--	--	--	--	--	--	--	--	--	--	--	--	--	--	--	--	--	--	--	--	--	--	--	--	--	--	--	--	--	--	--	--	--	--	--	--	--	--	--	--	--	--	--	--	--	--	--	--	--	--	--	--	--	--	--	--	--	--	--	--	--	--	--	--	--	--	--	--	--	--	--	--	--	--	--	--	--	--	--	--	--	--	--	--	--	--	--	--	--	--	--	--	--	--	--	--	--	--	--	--	--	--	--	--	--	--	--	--	--	--	--	--	--	--	--	--	--	--	--	--	--	--	--	--	--	--	--	--	--	--	--	--	--	--	--	--	--	--	--	--	--	--	--	--	--	--	--	--	--	--	--	--	--	--	--	--	--	--	--	--	--	--	--	--	--	--	--	--	--	--	--	--	--	--	--	--	--	--	--	--	--	--	--	--	--	--	--	--	--	--	--	--	--	--	--	--	--	--	--	--	--	--	--	--	--	--	--	--	--	--	--	--	--	--	--	--



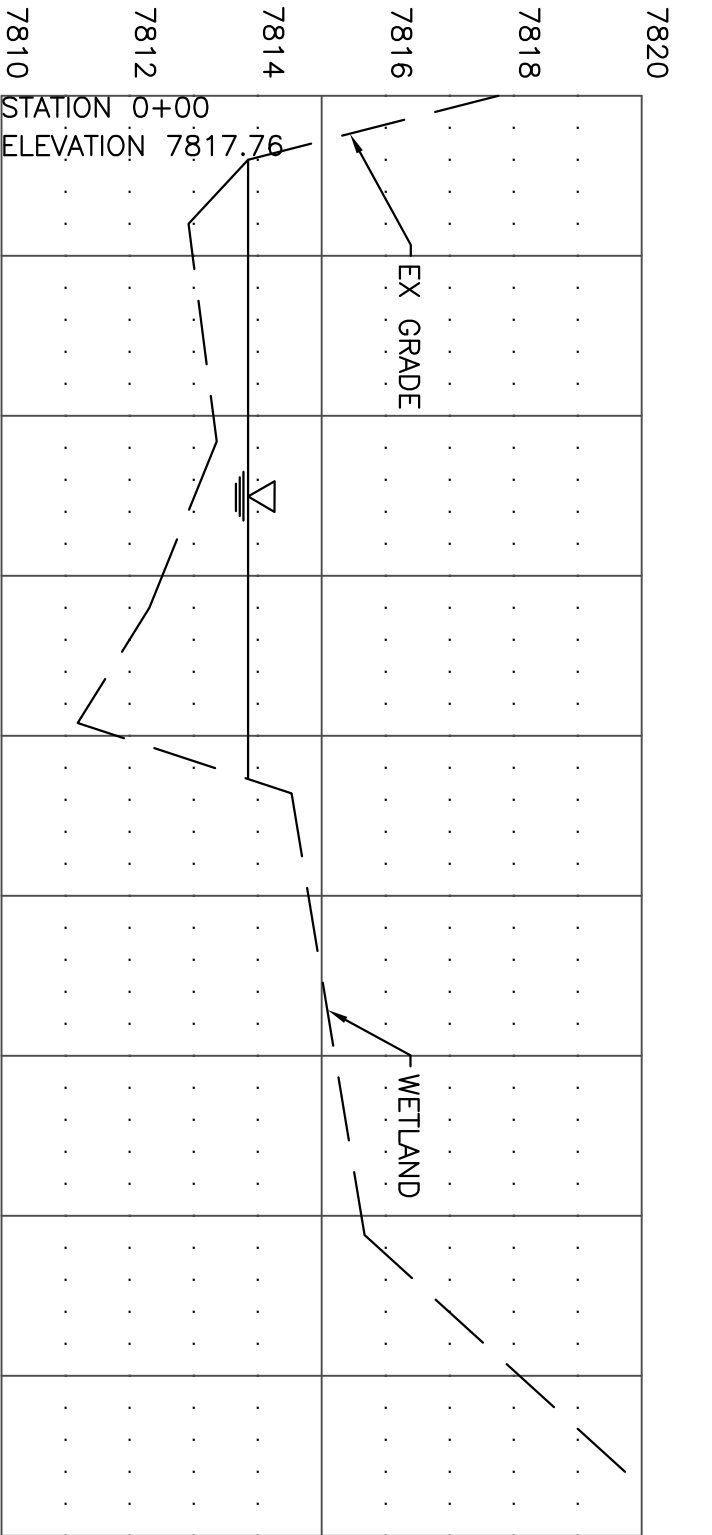
## CROSS SECTION 6

4+37 (ON PROPERTY LINE)  
HORIZONTAL SCALE:1"=30'  
VERTICAL SCALE:1"=3'

[illegible]

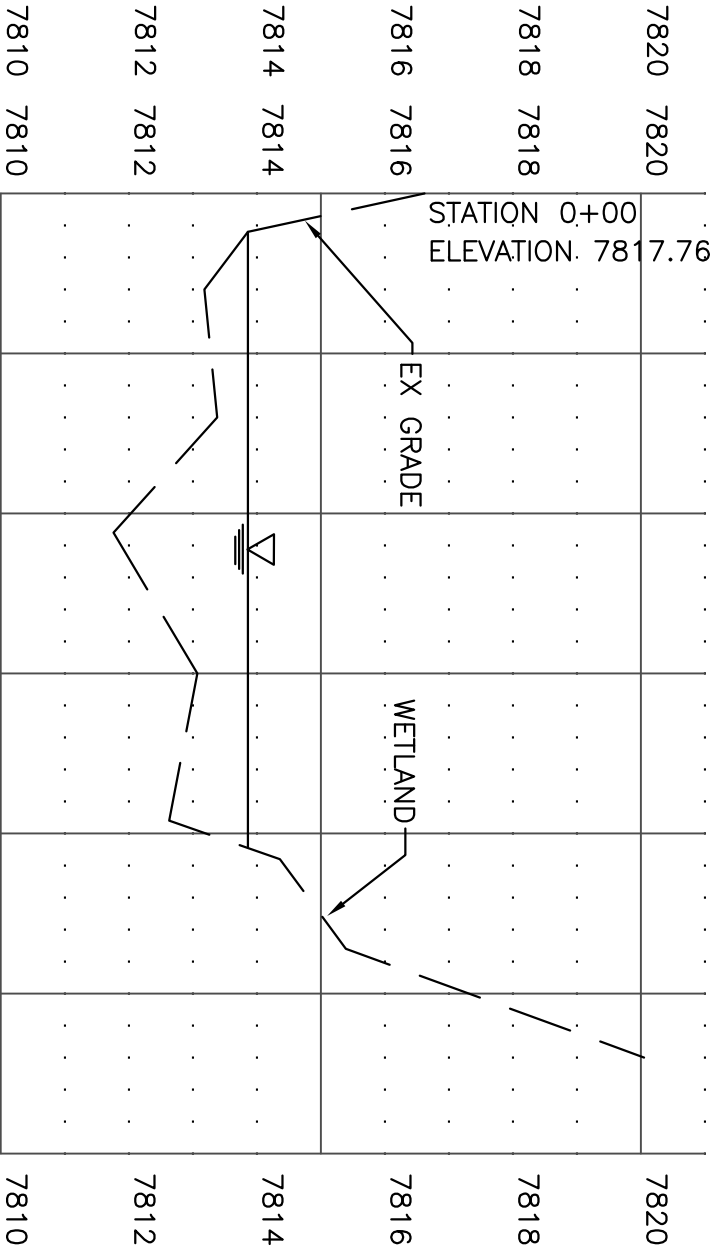






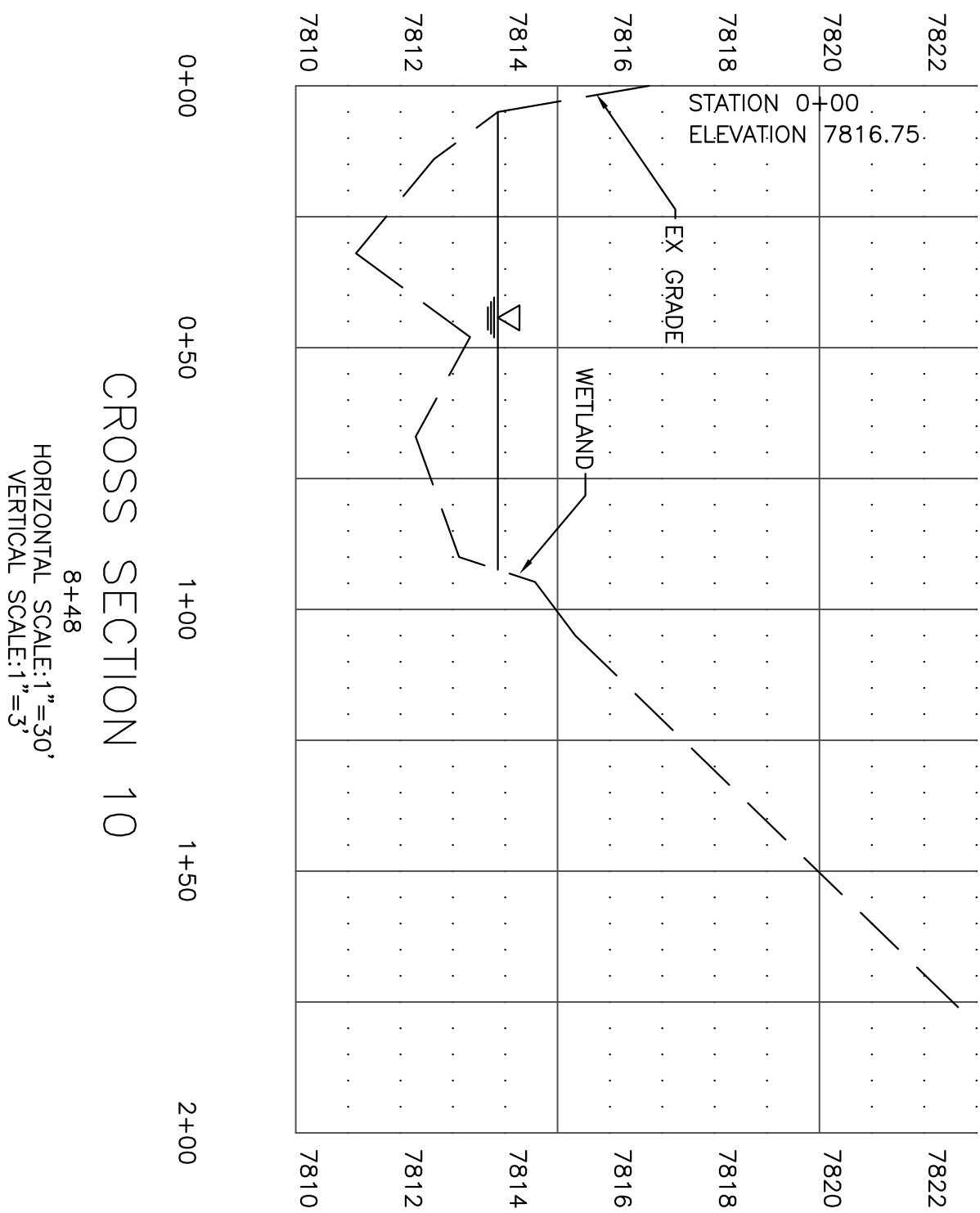
CROSS SECTION 8

6+61  
HORIZONTAL SCALE:1"=30'  
VERTICAL SCALE:1"=3'



CROSS SECTION 9

7+67  
HORIZONTAL SCALE:1"=30'  
VERTICAL SCALE:1"=3'



8+48  
HORIZONTAL SCALE:1"=30'  
VERTICAL SCALE:1"=3'

# CROSS SECTION 10

Sheet  
reference  
number:

**SPORTSMAN'S PARADISE**  
IRRIGATION RELOCATION &  
HABITAT ENHANCEMENT PROJECT  
PARK COUNTY, COLORADO  
CHANNEL CROSS SECTIONS

**CRANE ASSOCIATES**

29163 Stingly Gulch Road  
Hotchkiss, Colorado 81419  
Phone (970) 872-2433

Designed by:  
JEFF CRANE

Dwn by:	
JPC	
Reviewed by:	

Submitted by:

Date:  
May, 2009

Design file no:

Drawing Code:

File name:  
Plot date:  
Plot scale:

Rev.

[illegible]