

Round Mountain Water and Sanitation District  
CWCB Final Report  
August 2009



This is a photo of Nequette Drilling trucks on the day of the initial drilling for the Gallery Well. The backdrop of the Sangre de Cristo Mountains makes this task even more memorable.

Nequette Drilling hit water at 50 feet and then continued drilling to the documented well depth of 108 feet.



Round Mountain Water and Sanitation District  
CWCB Final Report  
August 2009



What an amazing sight. This is the beginning of an almost two year process to acquire a new water source for our distribution into Westcliffe and Silver Cliff communities.

This is the pipeline that will carry the water from the well to the pump.

Round Mountain Water and Sanitation District  
CWCB Final Report  
August 2009



Aquila Electric Company installed the primary power to the site.

This is the transformer installed at the Gallery site by Aquila Electric.



Round Mountain Water and Sanitation District  
CWCB Final Report  
August 2009



This is a concrete Thrust Block at 90-degree elbow that will go into the Water Treatment Building.

T with valve for future use.



Round Mountain Water and Sanitation District  
CWCB Final Report  
August 2009



View of trench beneath Water Treatment Building.

The concrete pad pictured above was built by Seifert Enterprises for the Water Treatment Building.

Round Mountain Water and Sanitation District  
CWCB Final Report  
August 2009

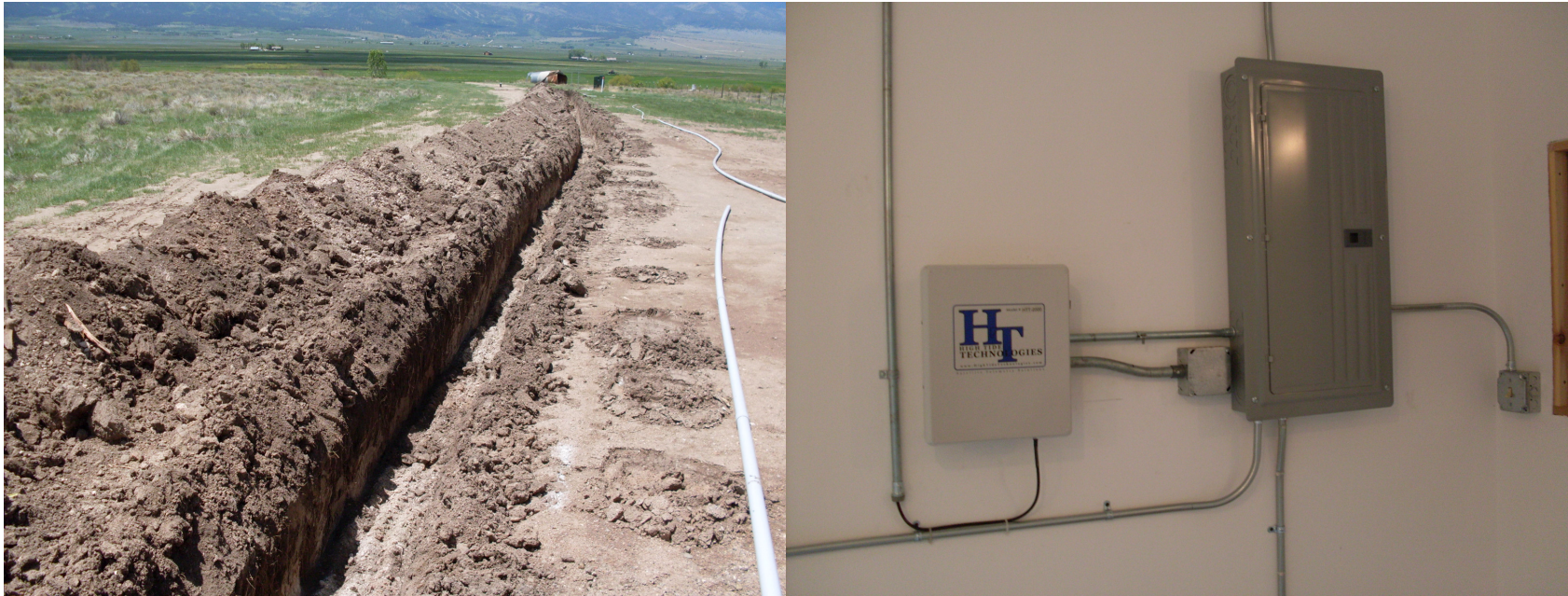


The Water Treatment Building in progress.

This is the final picture of the Water Treatment Building with required placard.



Round Mountain Water and Sanitation District  
CWCB Final Report  
August 2009



This trench was dug by Round Mountain Water and Sanitation District to run the electric wires needed for the satellite system and the building power. Childress Electric provided the electrical services.

This photo shows the High Tide Satellite Wireless System as well as the electric panel installed by Childress Electric.

Round Mountain Water and Sanitation District  
CWCB Final Report  
August 2009

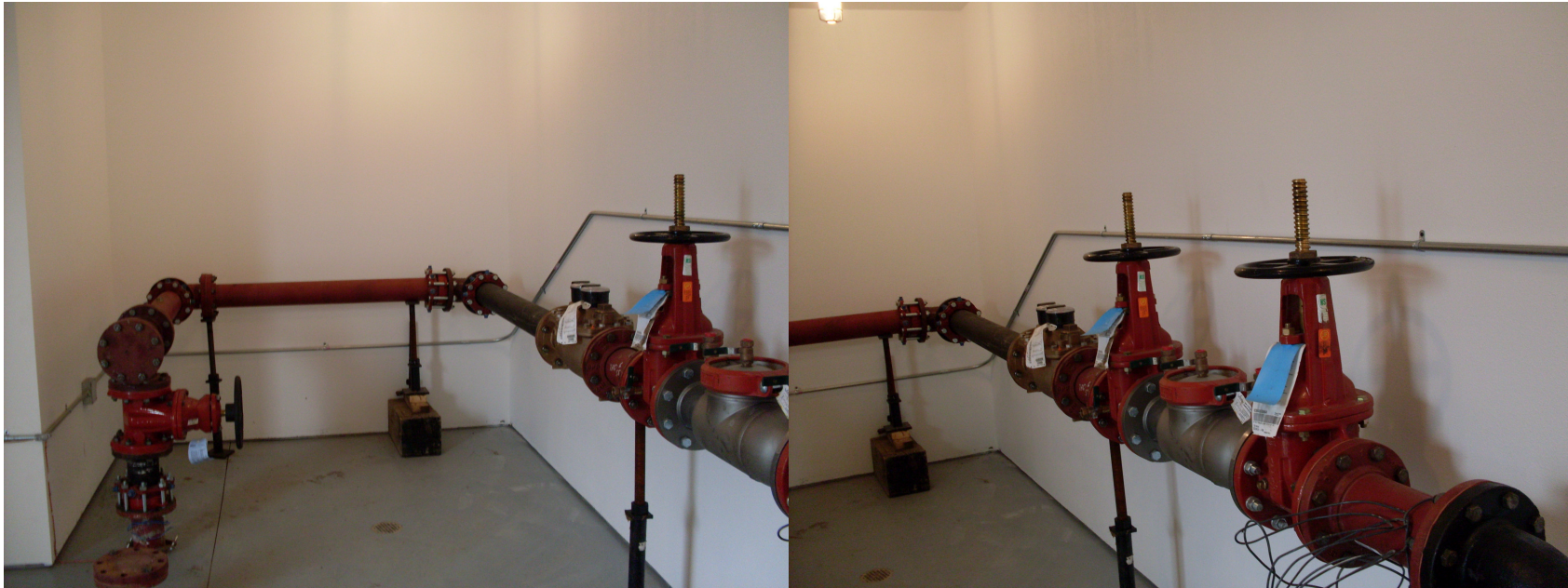


This photo was taken at the site of our storage tanks. The equipment on the left is the High Tide Wireless equipment used to give tank levels to the pump systems.

Pictured above is the satellite system located next to the storage tanks.



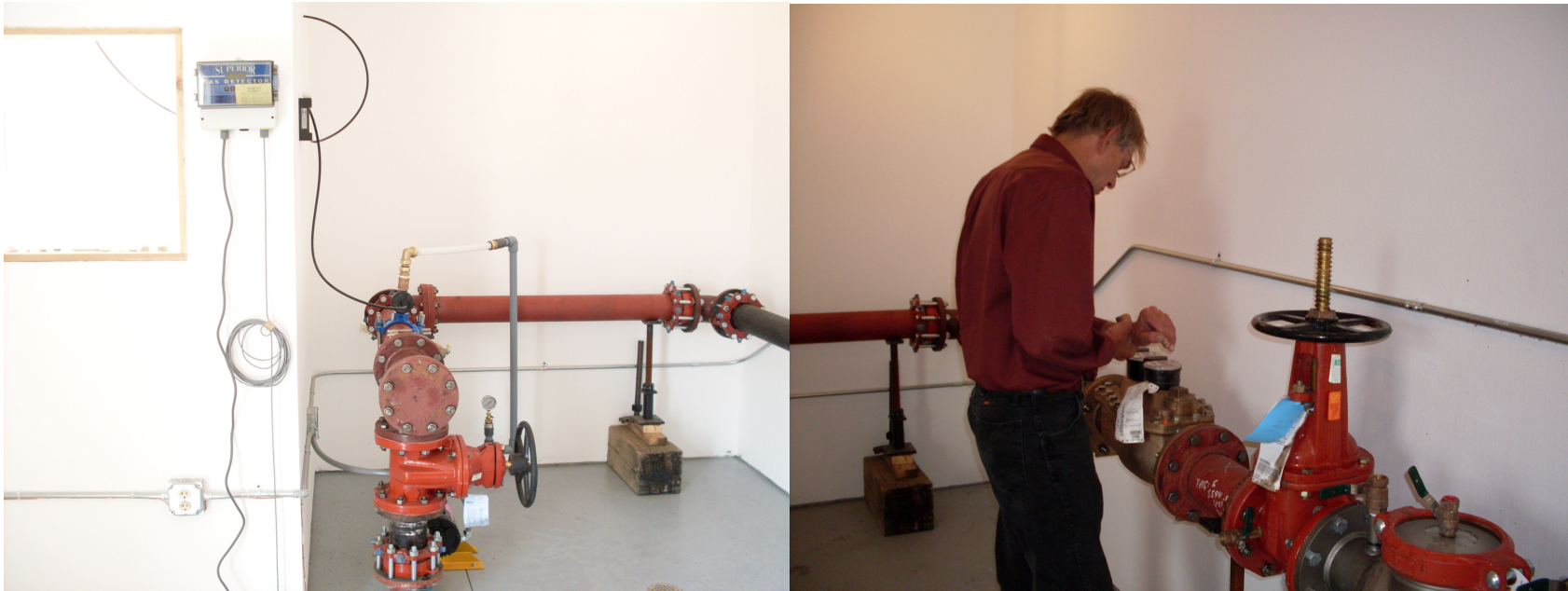
Round Mountain Water and Sanitation District  
CWCB Final Report  
August 2009



This is a photo taken inside the Water Treatment Building. The meter is located to the right and the chlorine injection system will tie in from the left.

Another picture of the valves and meter inside the Water Treatment Building.

Round Mountain Water and Sanitation District  
CWCB Final Report  
August 2009



The Chlorine Injection system is located in the window to the left and feeds through the wall into the system.

Wayne Jones, Round Mountain Water and Sanitation Operator, checks the amount of gallons being pumped on the initial startup.



Round Mountain Water and Sanitation District  
CWCB Final Report  
August 2009



After almost two years, we have water!!! On July 7, 2009 the District ran the initial startup. Everything is coming together.

Thank you CWCB for supporting Round Mountain Water and Sanitation District.