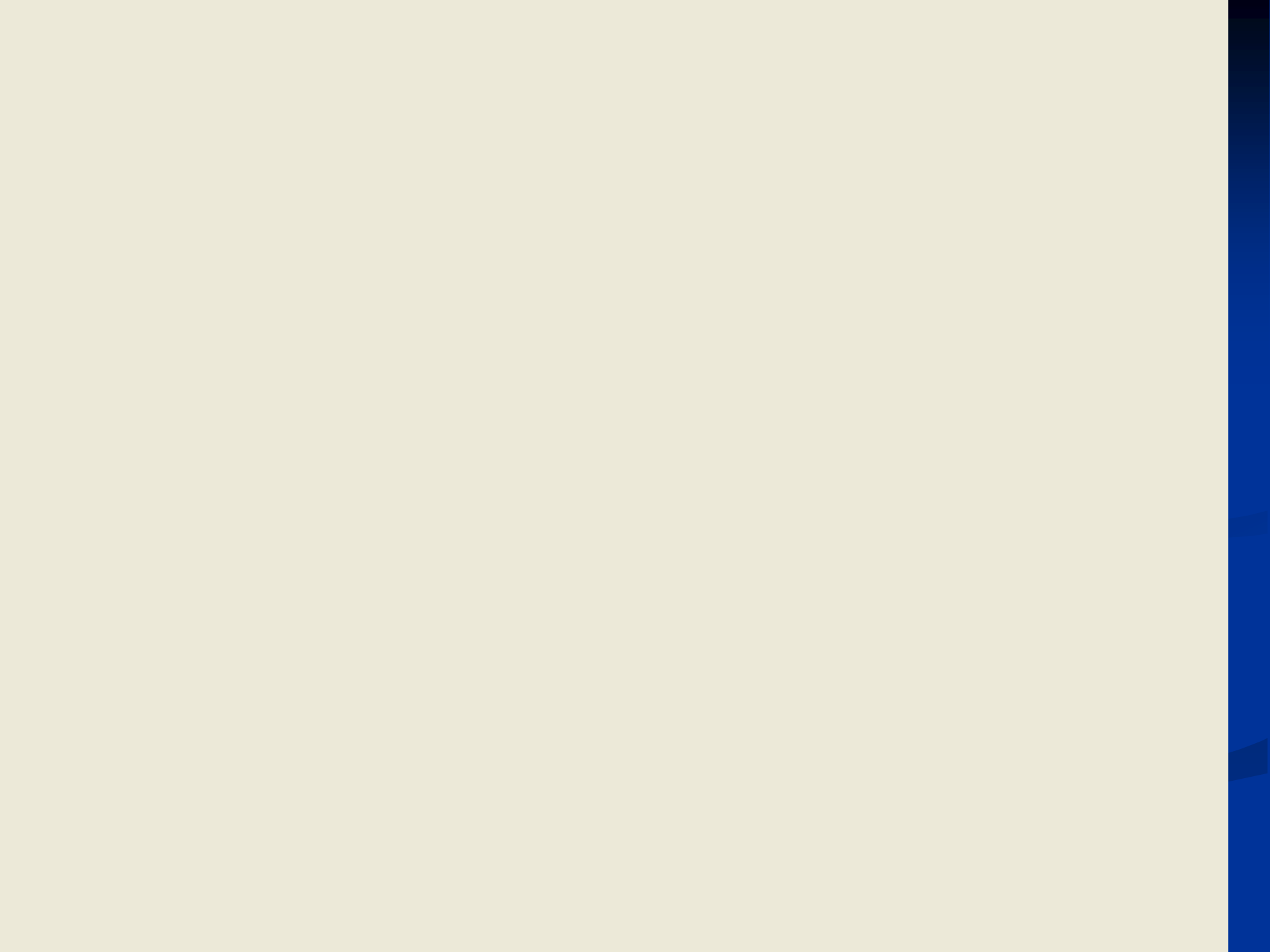


# Short Term Weather

**Colorado Flood Task Force March 12, 2009**



Valid time seq

CONUS

Clear

K

&lt;

&gt;

I

I

I

I

I

I

I

I

I

I

I

I

I

I

I

I

I

I

I

I

I

I

I

I

I

I

I

I

I

I

I

Frames: 32

Mag: 1

Density: 1



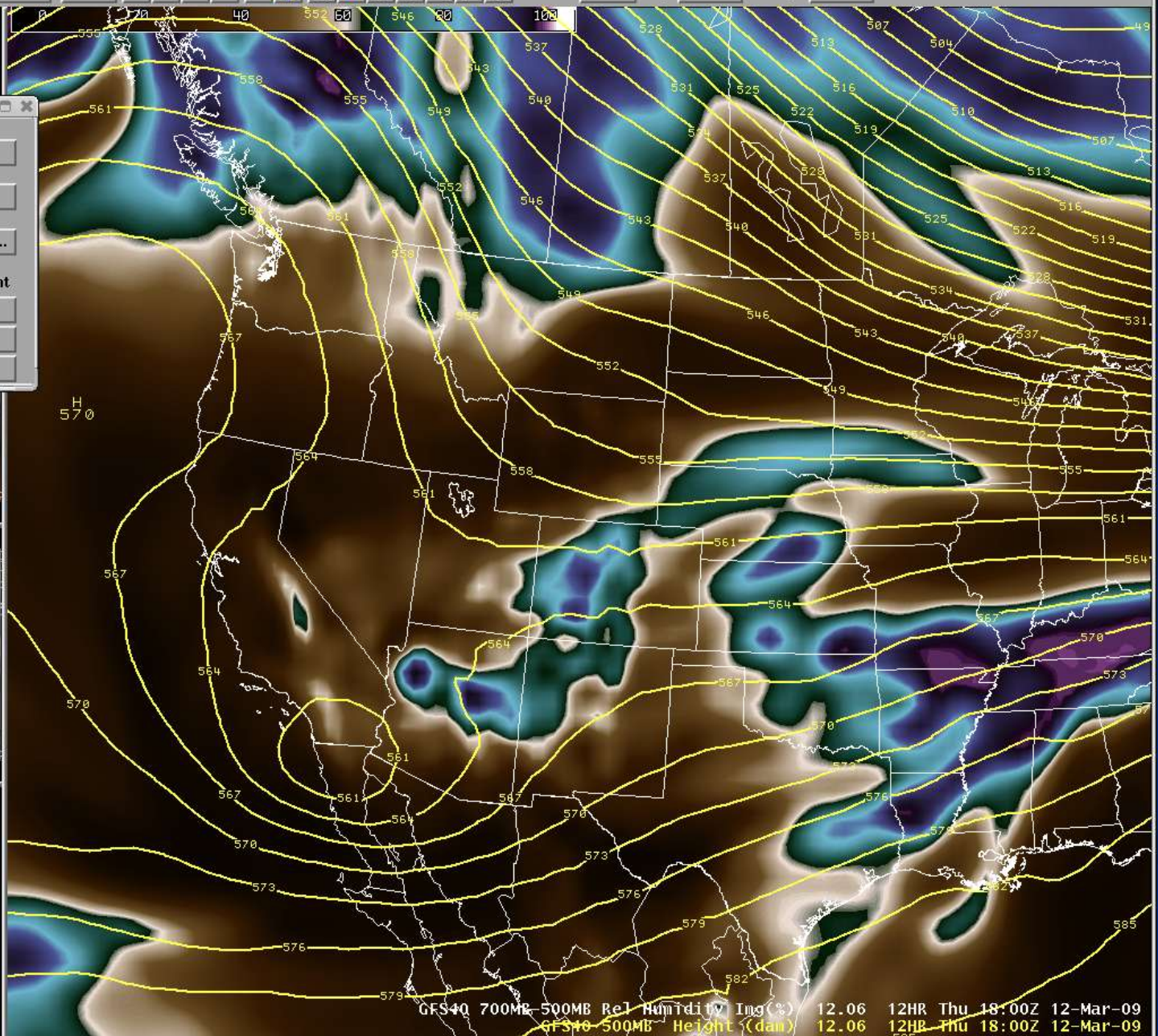
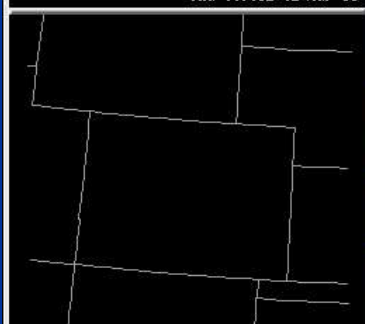
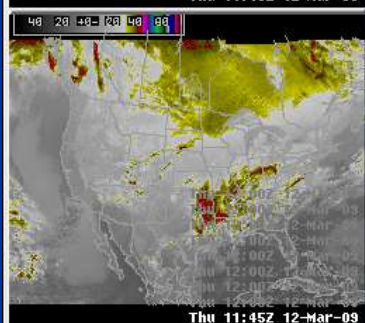
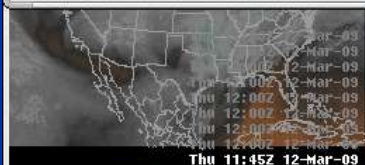
Procedure - 500mb, RH

GFS40 500MB, RH-240  
ECMWF 500MB, RH-240

Up  
Down  
Rename...

Original Current

Next Load Alter...  
Copy In Copy Out Delete  
Save Save As... Close





Valid time seq

CONUS

Clear

K

&lt;

&gt;

I

I

I

I

I

I

I

I

I

I

I

I

I

I

I

I

I

I

I

I

I

I

I

I

I

I

I

I

I

I

I

I

I

I

I

Frames: 32

Mag: 1

Density: 1



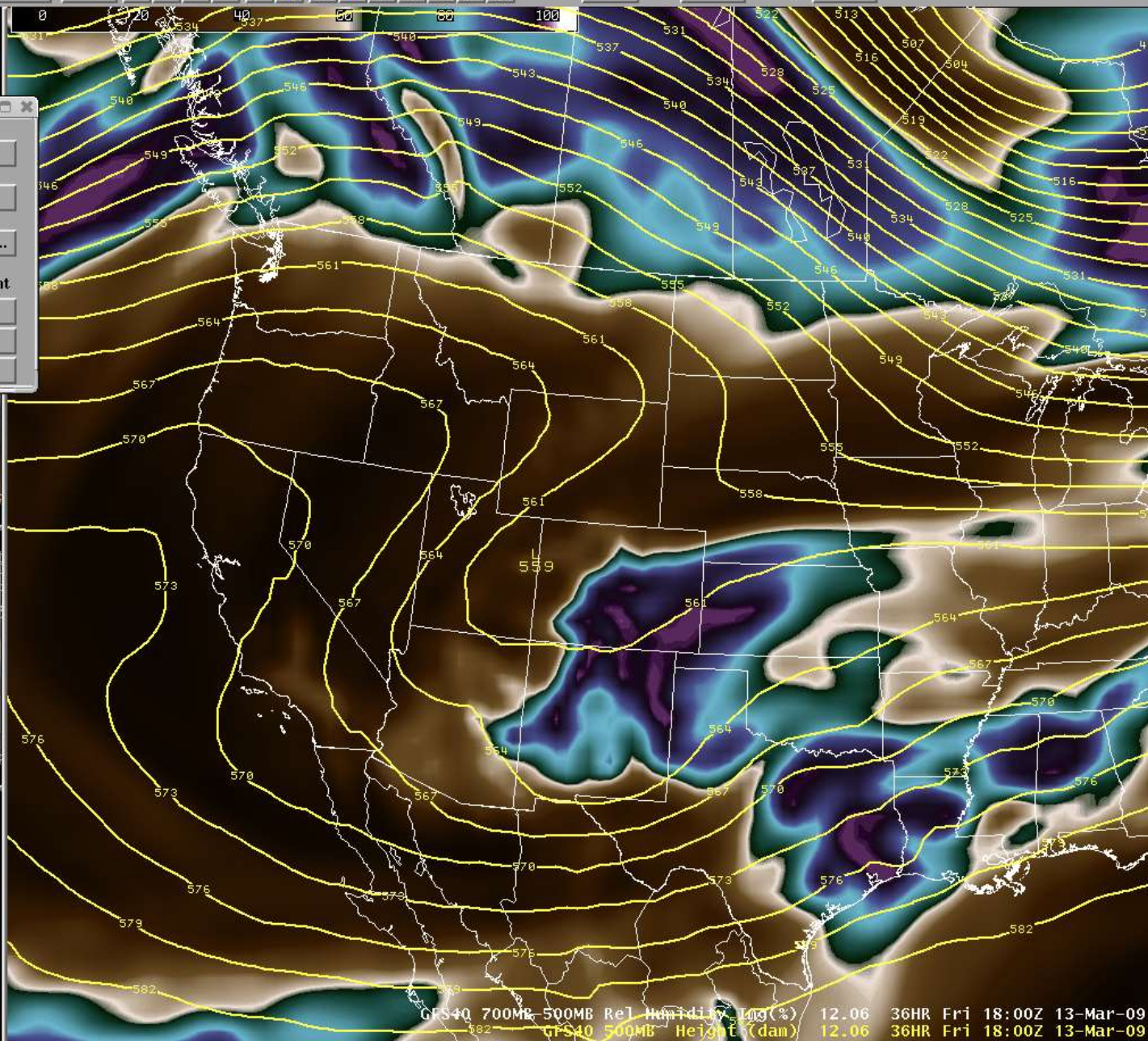
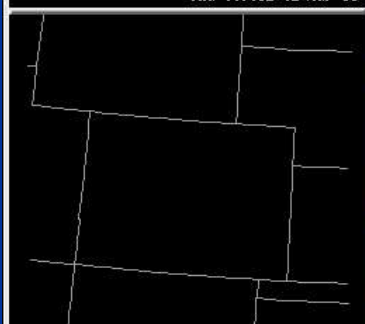
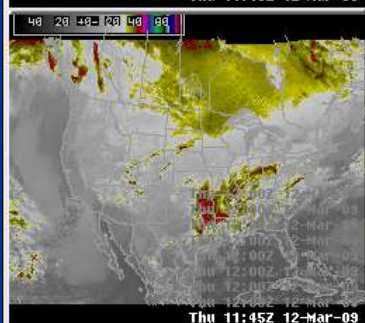
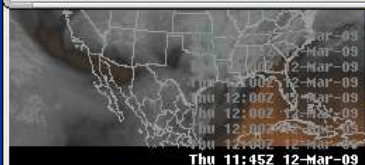
Procedure - 500mb, RH

GFS40 500MB, RH-240  
ECMWF 500MB, RH-240

Up  
Down  
Rename...

Original Current

Next Load Alter...  
Copy In Copy Out Delete  
Save Save As... Close



GFS40 700MB-500MB Rel Humidity Log(%) 12.06 36HR Fri 18:00Z 13-Mar-09  
GFS40 500MB Height (dan) 12.06 36HR Fri 18:00Z 13-Mar-09

Status: A

Radar: A

Frames: 22 Time: 12:49 Z 12-Mar-09



Valid time seq

CONUS

Clear

K

&lt;

&gt;

»

»

»

»

»

»

»

»

»

»

»

»

»

»

»

»

»

»

»

»

»

»

»

»

»

»

»

»

»

»

»

Frames: 32

Mag: 1

Density: 1



Procedure - 500mb, RH

GFS40 500MB, RH-240  
ECMWF 500MB, RH-240

Up

Down

Rename...

Original

Current

Next

Load

Alter...

Copy In

Copy Out

Delete

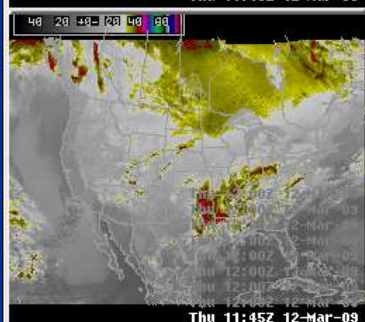
Save

Save As...

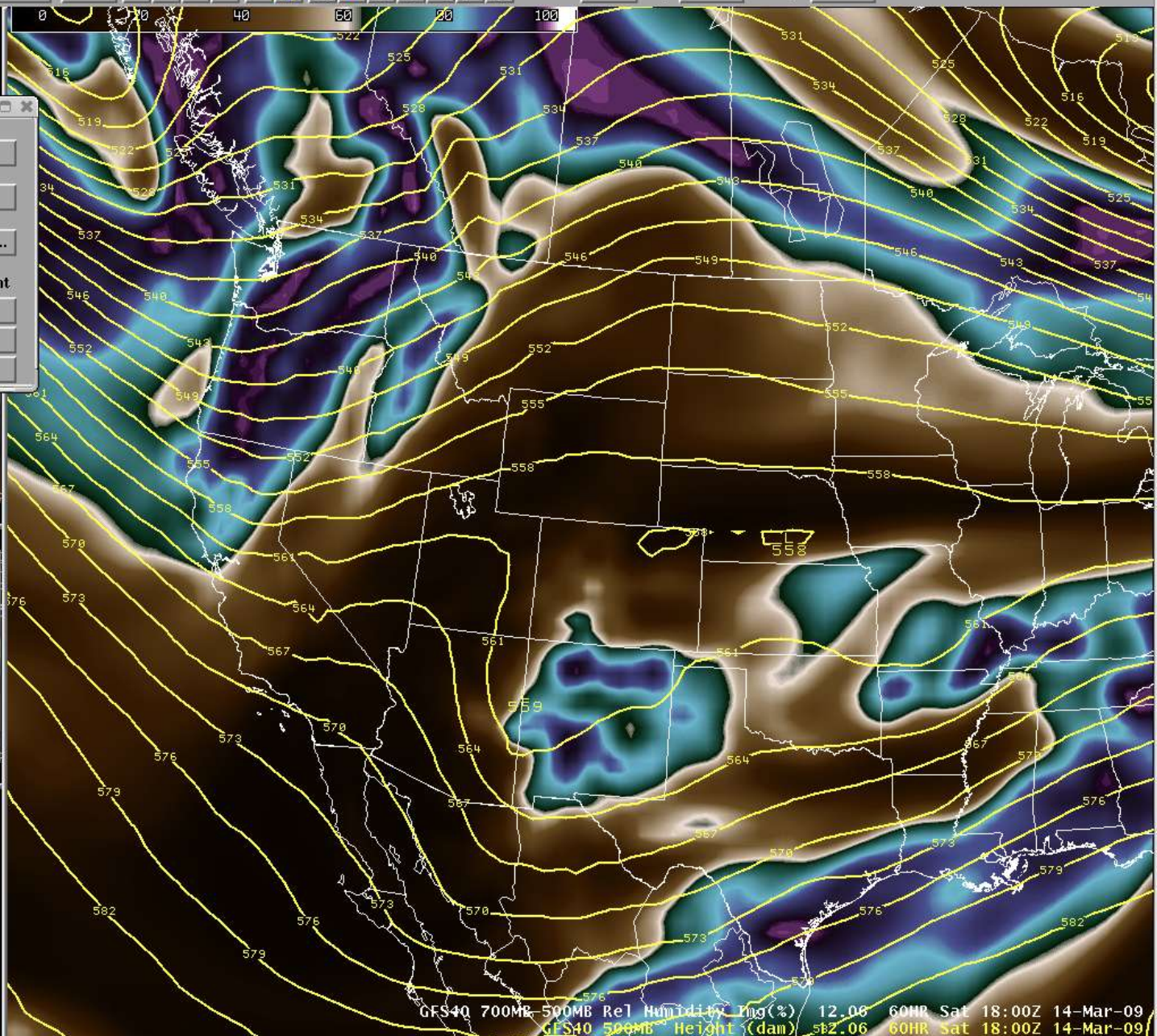
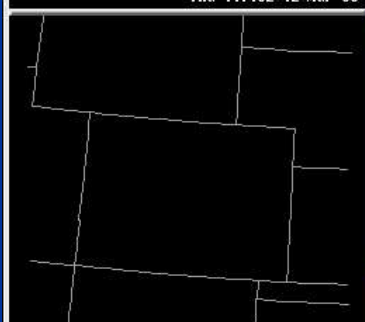
Close



Thu 11:45Z 12-Mar-09



Thu 11:45Z 12-Mar-09





Valid time seq

CONUS

Clear

K

&lt;

&gt;

I

I

I

I

I

I

I

I

I

I

I

I

I

I

I

I

I

I

I

I

I

I

I

I

I

I

I

I

I

I

I

Frames: 32

Mag: 1

Density: 1



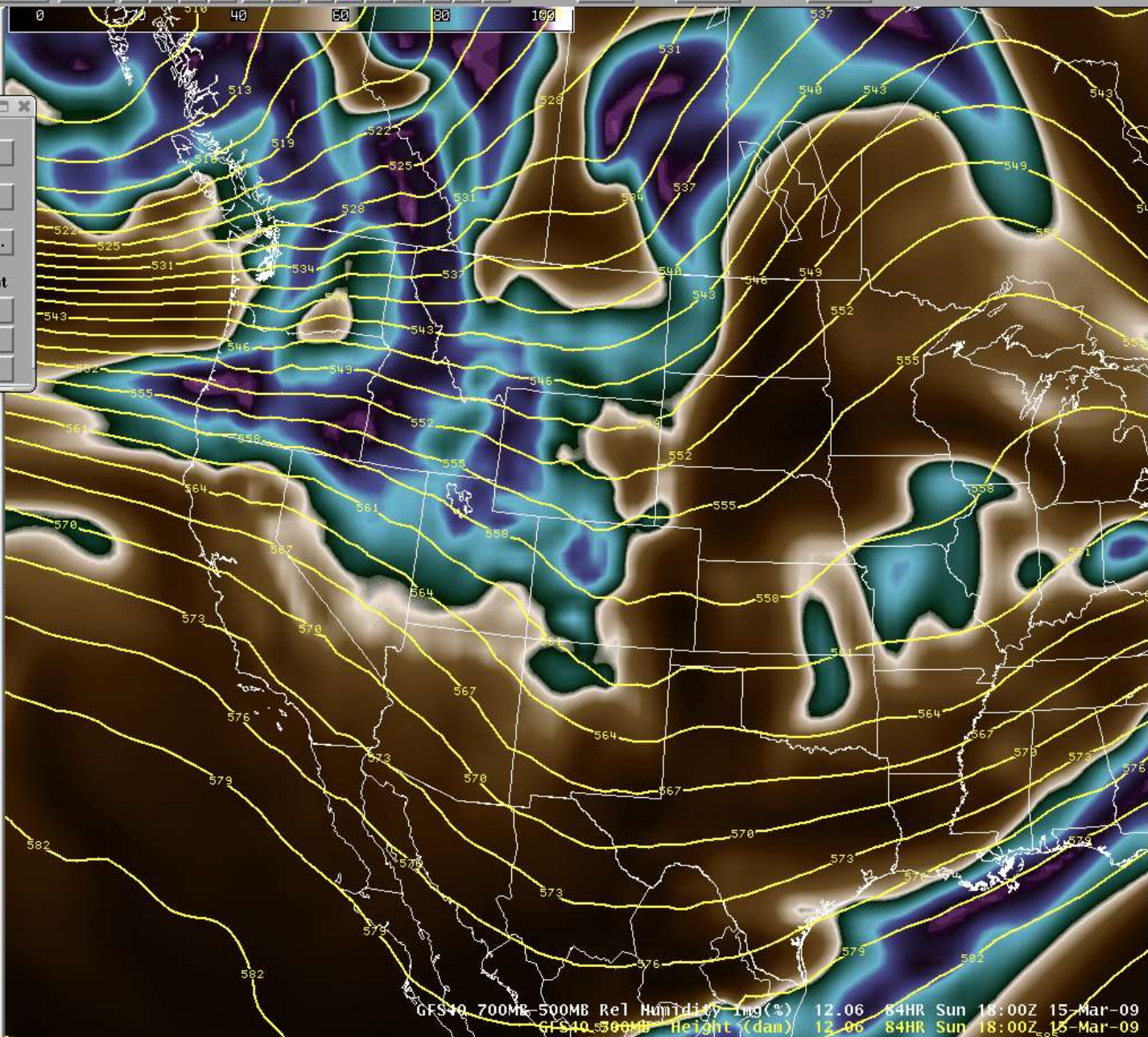
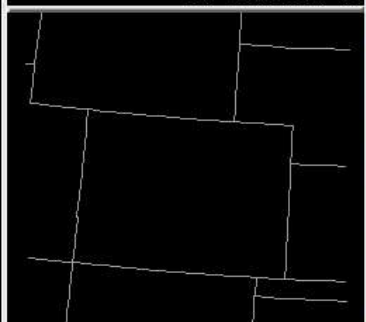
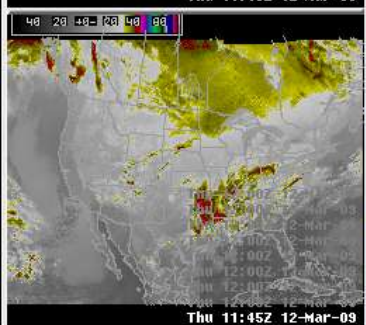
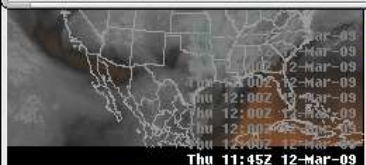
Procedure - 500mb, RH

GFS40 500MB, RH-240  
ECMWF 500MB, RH-240

Up  
Down  
Rename...

Original  
Current

Next Load Alter...  
Copy In Copy Out Delete  
Save Save As... Close



GFS40 700MB-500MB Rel Humidity 1mg(%) 12.06 84HR Sun 18:00Z 15-Mar-09  
GFS40 500MB Height (dan) 12.06 84HR Sun 18:00Z 15-Mar-09

Status: [ ]

Radar: [ ]

Frames: 22 Time: 12:50 Z 12-Mar-09



Valid time seq

CONUS

Clear

K

&lt;

&gt;

&gt;&gt;

C

P

P

P

P

P

P

P

P

P

P

P

P

P

P

P

P

P

P

P

P

P

P

P

P

P

P

P

P

P

P

P

P

P

Frames: 32

Mag: 1

Density: 1



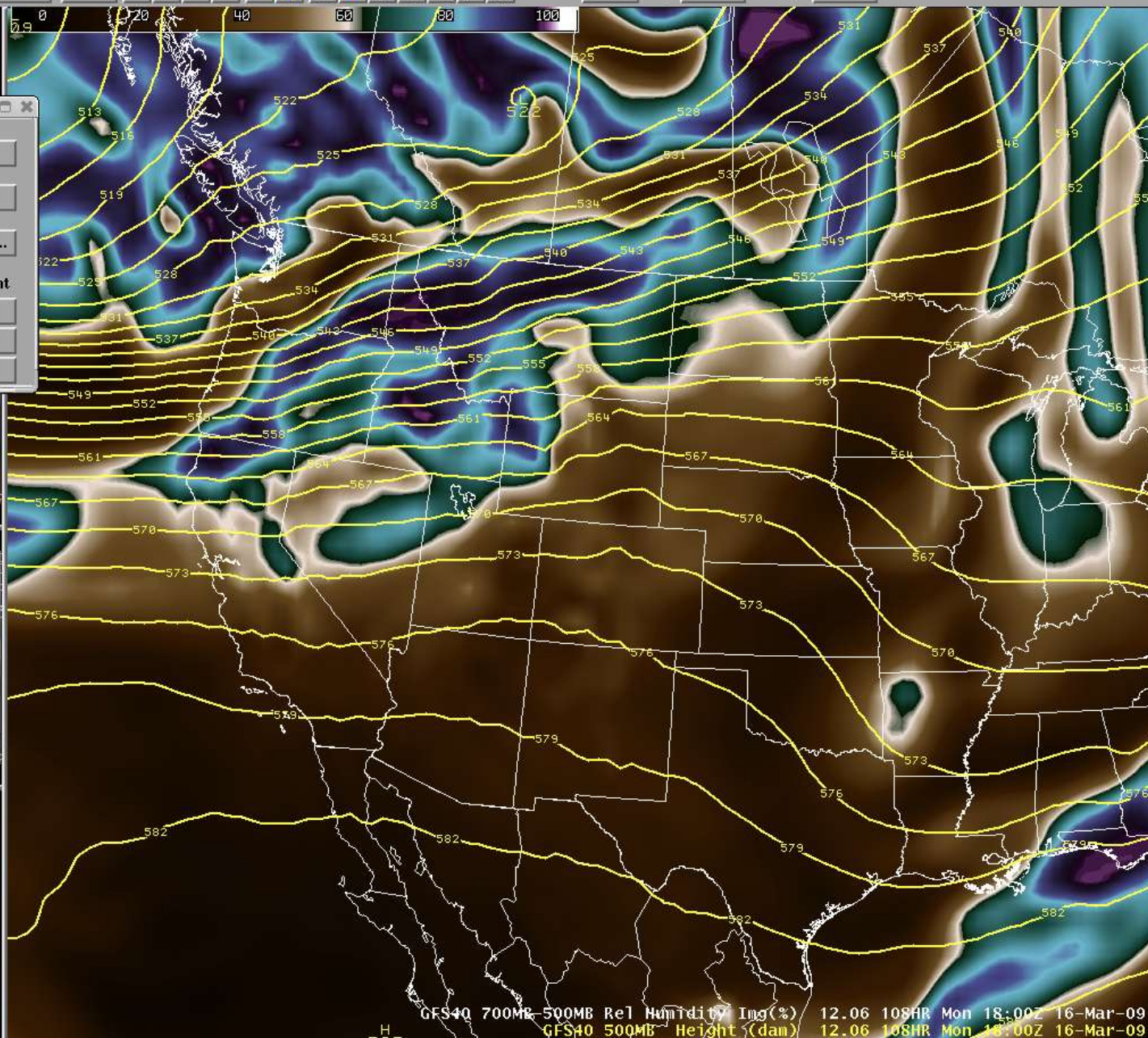
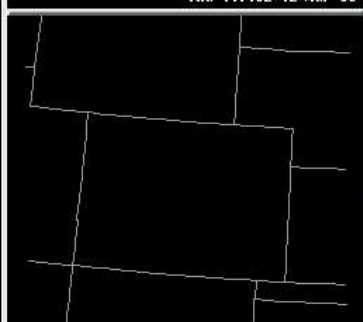
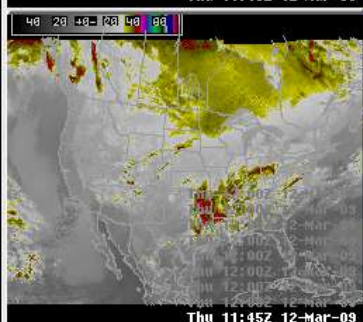
Procedure - 500mb, RH

GFS40 500MB, RH-240  
ECMWF 500MB, RH-240

Up  
Down  
Rename...

Original  
Current

Next Load Alter...  
Copy In Copy Out Delete  
Save Save As... Close





Valid time seq

CONUS

Clear

K

&lt;

&gt;

I

I

I

I

I

I

I

I

I

I

I

I

I

I

I

I

I

I

I

I

I

I

I

I

I

I

I

I

I

I

I

I

I

I

I

Frames: 32

Mag: 1

Density: 1



Procedure - 500mb, RH

GFS40 500MB, RH-240  
ECMWF 500MB, RH-240

Up

Down

Rename...

Original

Current

Next

Load

Alter...

Copy In

Copy Out

Delete

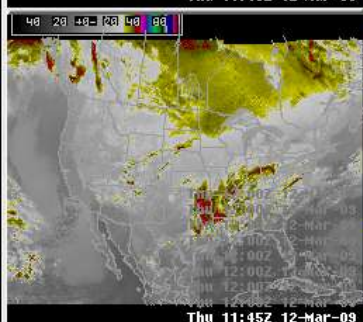
Save

Save As...

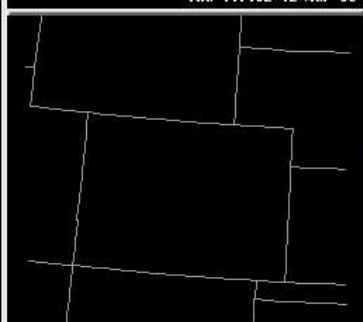
Close



Thu 11:45Z 12-Mar-09



Thu 11:45Z 12-Mar-09



Status:

Radar:

GFS40 700MB-500MB Rel Humidity (g%) 12.06 132HR Tue 18:00Z 17-Mar-09  
GFS40 500MB Height (dam) 12.06 132HR Tue 18:00Z 17-Mar-09

Frames: 22 Time: 12:51 Z 12-Mar-09



Valid time seq

CONUS

Clear

K

&lt;

&gt;

I

I

I

I

I

I

I

I

I

I

I

I

I

I

I

I

I

I

I

I

I

I

I

I

I

I

I

I

I

I

I

Frames: 32

Mag: 1

Density: 1



Procedure - 500mb, RH

GFS40 500MB, RH-240  
ECMWF 500MB, RH-240

Up

Down

Rename...

Original

Current

Next

Load

Alter...

Copy In

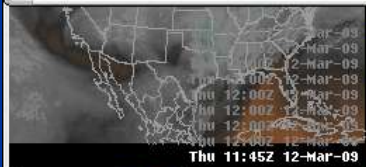
Copy Out

Delete

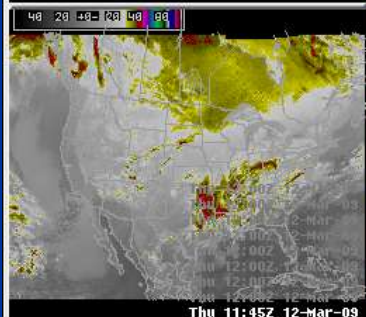
Save

Save As...

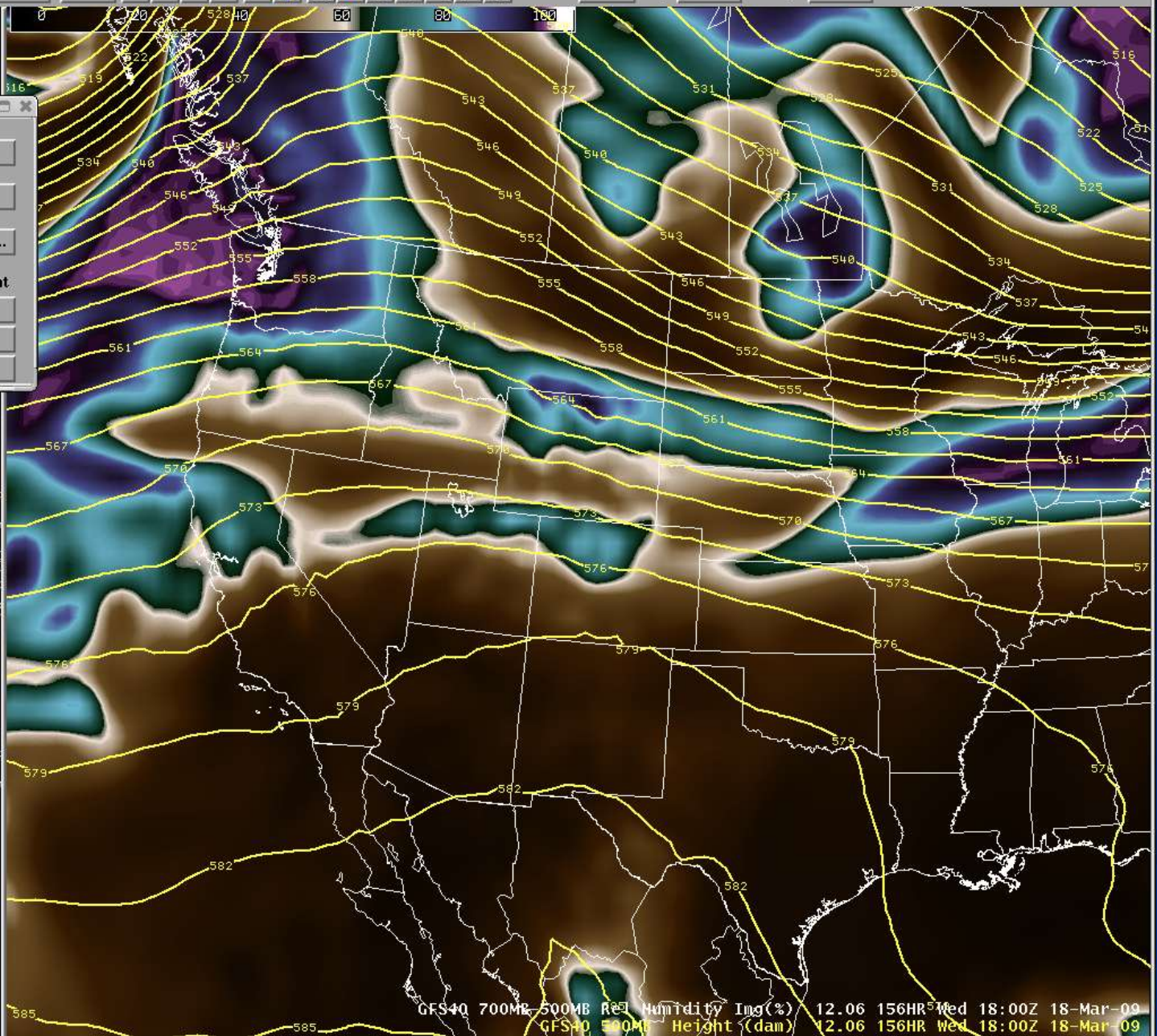
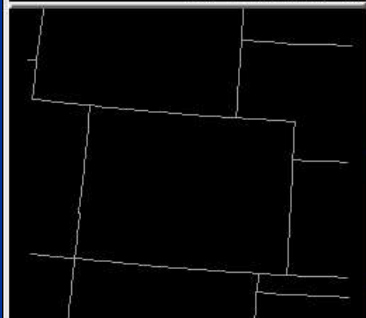
Close



Thu 11:45Z 12-Mar-09



Thu 11:45Z 12-Mar-09

GFS40 700MB 500MB RH Humidity Inc(%) 12.06 156HR Wed 18:00Z 18-Mar-09  
GFS40 500MB Height (dam) 12.06 156HR Wed 18:00Z 18-Mar-09

Status: [ ]

Radar: [ ]

Frames: 22 Time: 12:51 Z 12-Mar-09



Valid time seq

CONUS

Clear

K

&lt;

&gt;

I

I

I

I

I

I

I

I

I

I

I

I

I

I

I

I

I

I

I

I

I

I

I

I

I

I

I

I

I

I

I

I

I

I

I

I

I

I

I

I

Frames: 32

Mag: 1

Density: 1



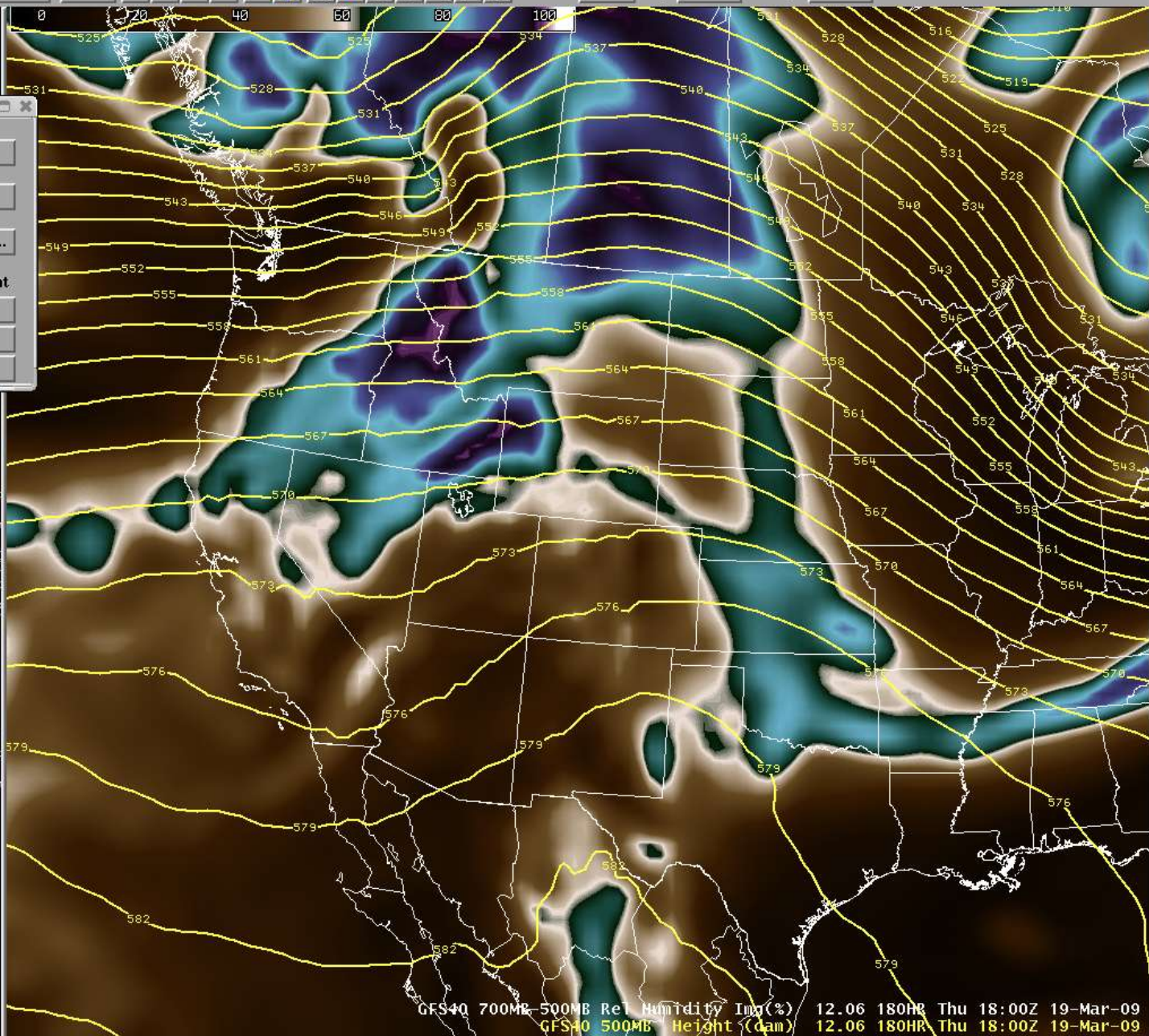
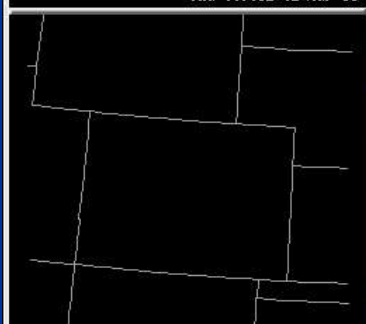
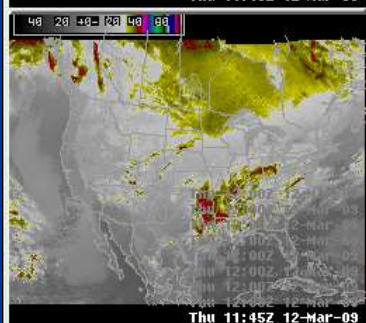
Procedure - 500mb, RH

GFS40 500MB, RH-240  
ECMWF 500MB, RH-240

Up  
Down  
Rename...

Original Current

Next Load Alter...  
Copy In Copy Out Delete  
Save Save As... Close



GFS40 700MB-500MB Rel Humidity Imp(%) 12.06 180HR Thu 18:00Z 19-Mar-09  
GFS40 500MB Height (dam) 12.06 180HR Thu 18:00Z 19-Mar-09

Status:

Radar:

Frames: 22 Time: 12:51 Z 12-Mar-09



Valid time seq

CONUS

Clear

K

&lt;

&gt;

»

I

I

I

I

I

I

I

I

I

I

I

I

I

I

I

I

I

I

I

I

I

I

I

I

I

I

I

Frames: 32

Mag: 1

Density: 1



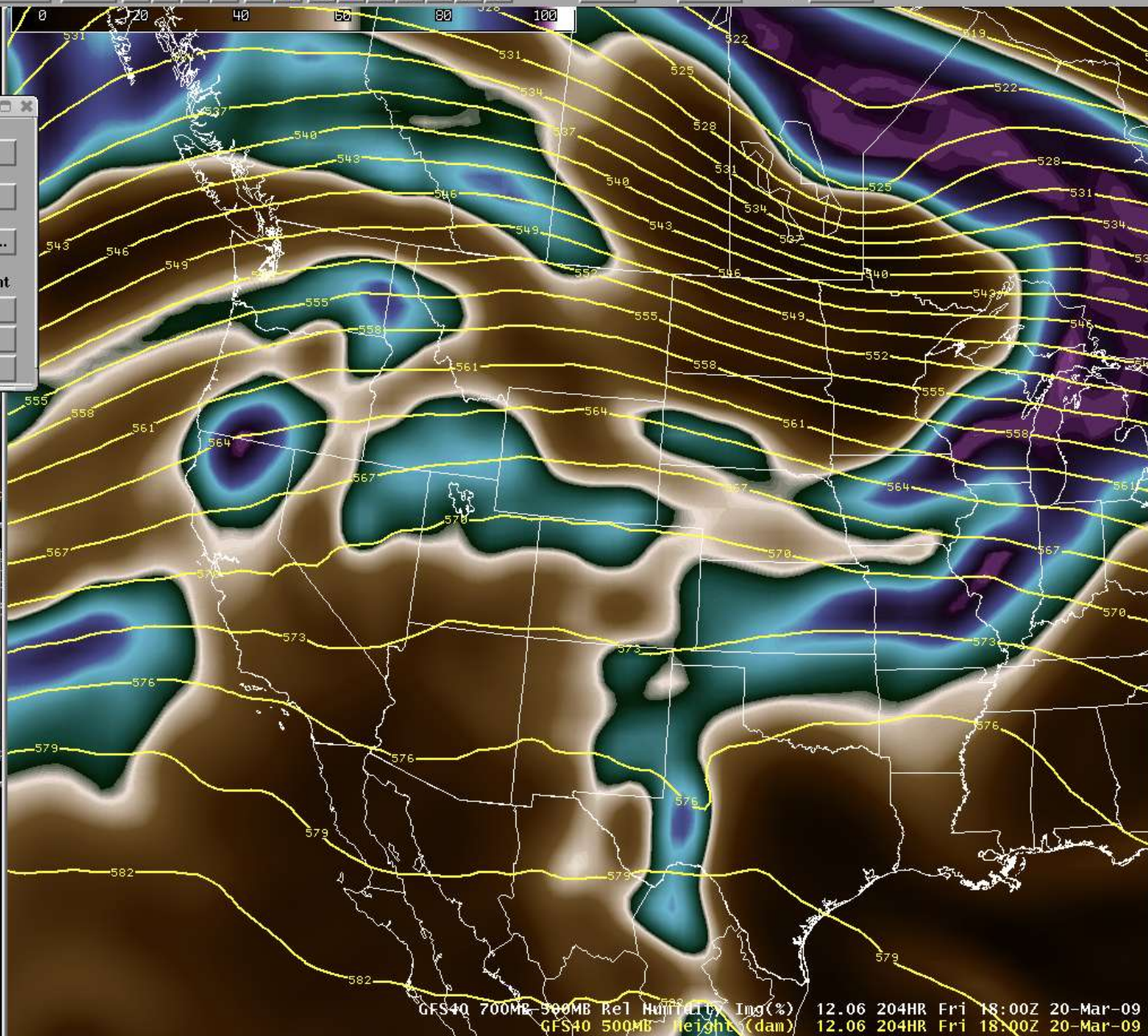
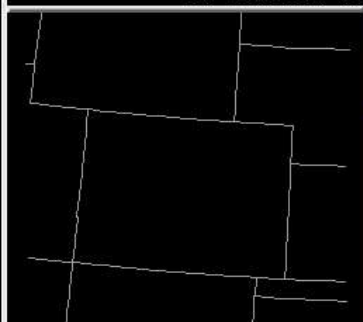
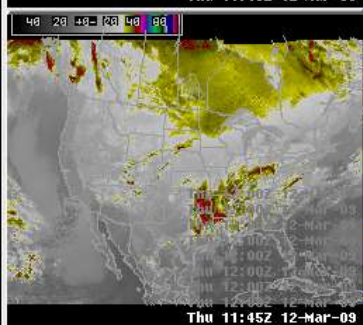
Procedure - 500mb, RH

GFS40 500MB, RH-240  
ECMWF 500MB, RH-240

Up  
Down  
Rename...

Original Current

Next Load Alter...  
Copy In Copy Out Delete  
Save Save As... Close



GFS40 700MB-500MB Rel Humidity (%) 12.06 204HR Fri 18:00Z 20-Mar-09  
GFS40 500MB Height (dam) 12.06 204HR Fri 18:00Z 20-Mar-09

Status:

Radar:

Frames: 22 Time: 12:51 Z 12-Mar-09



Valid time seq

CONUS

Clear

K

&lt;

&gt;

I

I

I

I

I

I

I

I

I

I

I

I

I

I

I

I

I

I

I

Frames: 32

Mag: 1

Density: 1



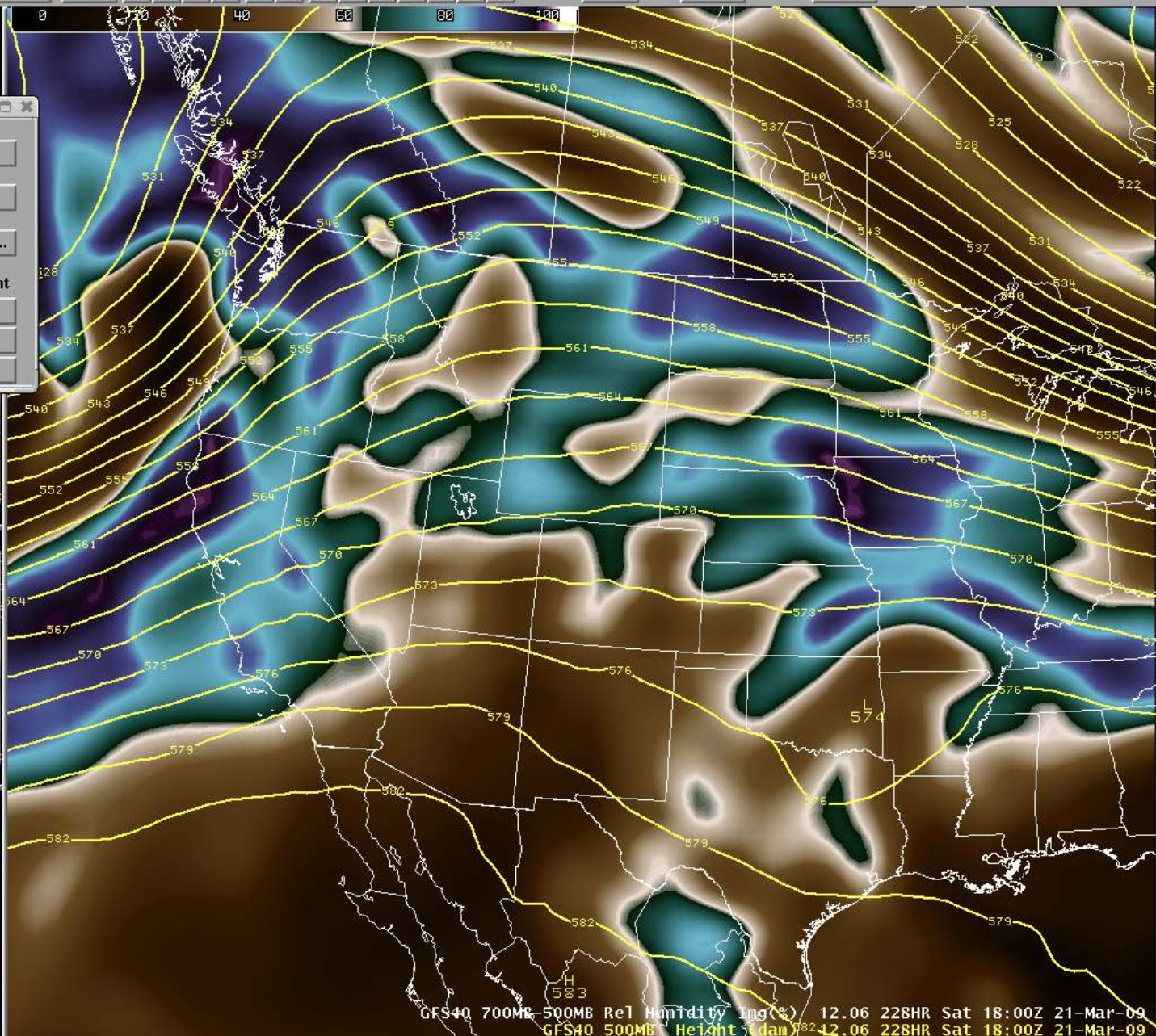
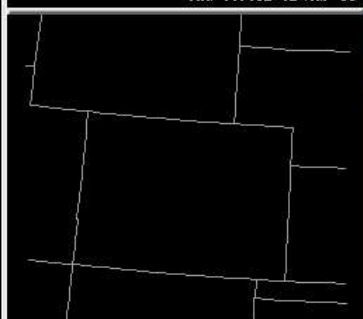
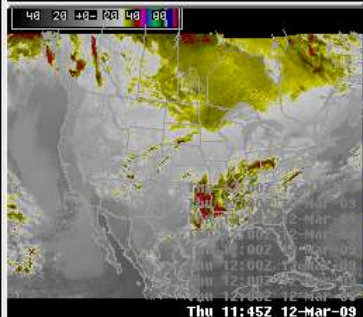
Procedure - 500mb, RH

GFS40 500MB, RH-240  
ECMWF 500MB, RH-240

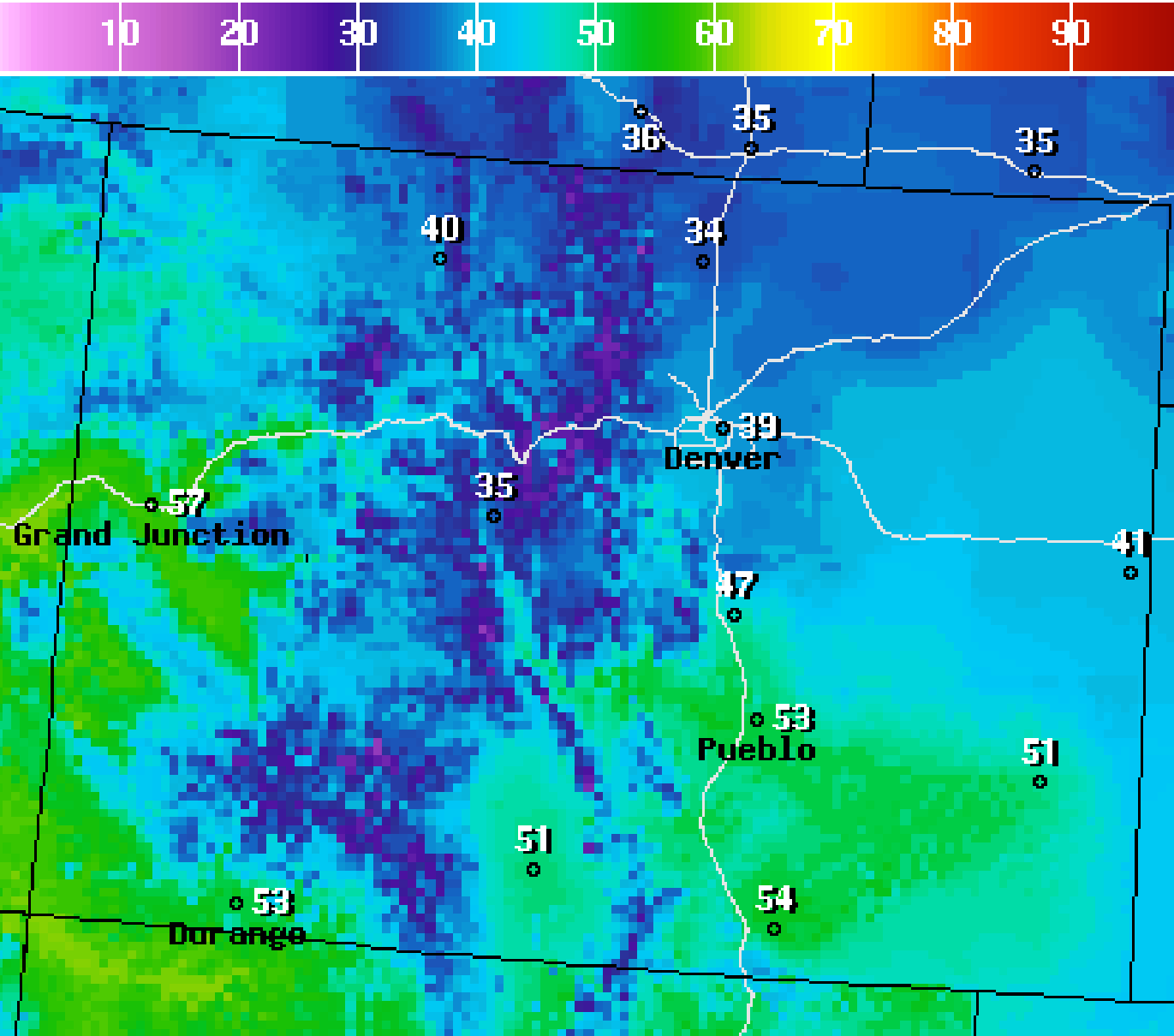
Up  
Down  
Rename...

Original Current

Next Load Alter...  
Copy In Copy Out Delete  
Save Save As... Close







High Temperature(F) Ending Thu Mar 12 2009 8PM EDT

(Fri Mar 13 2009 00Z)



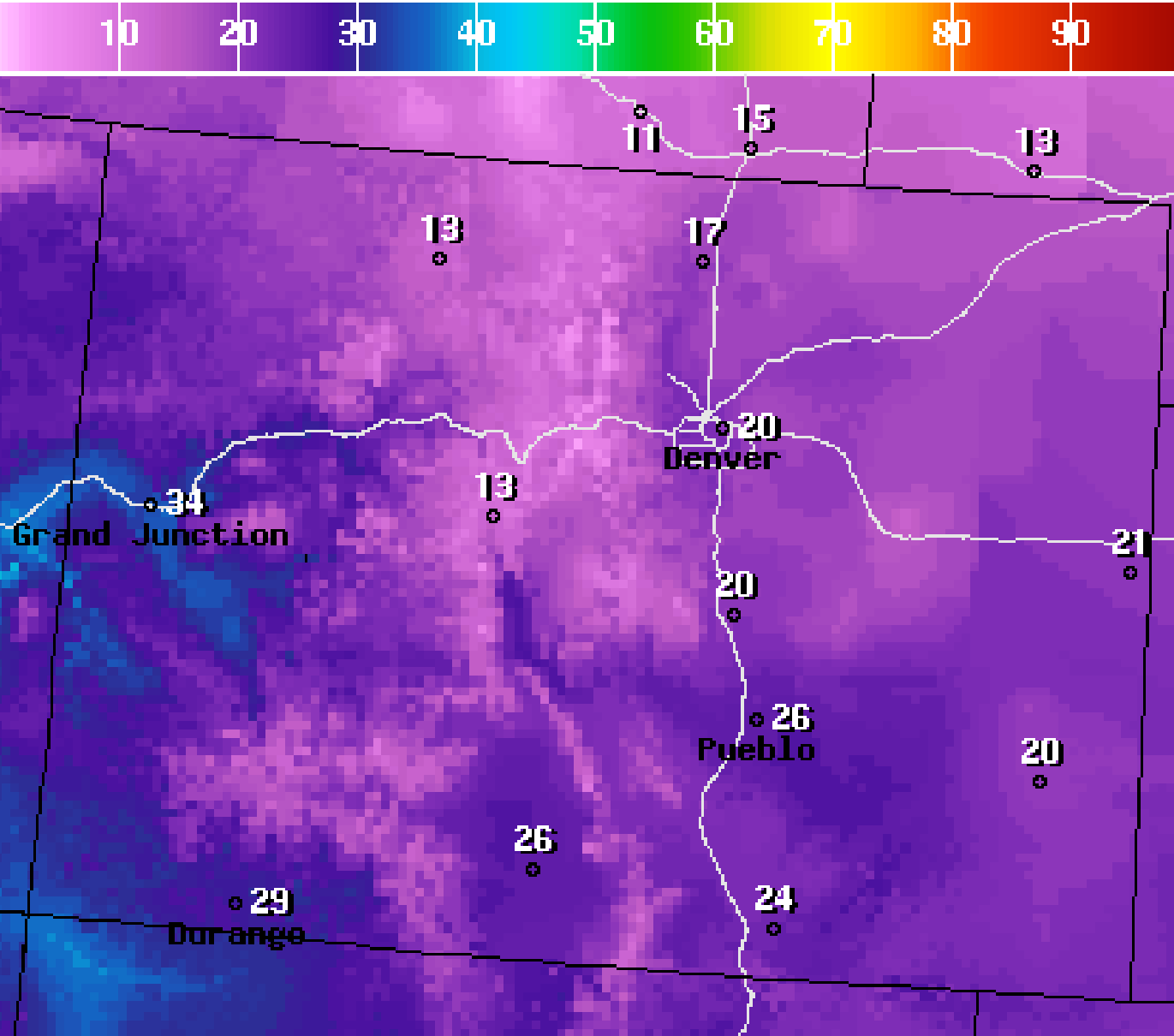
**National Digital Forecast Database**

13z issuance

Graphic created-Mar 12 9:12AM EDT







Low Temperature(F) Ending Fri Mar 13 2009 8AM EDT

(Fri Mar 13 2009 12Z)



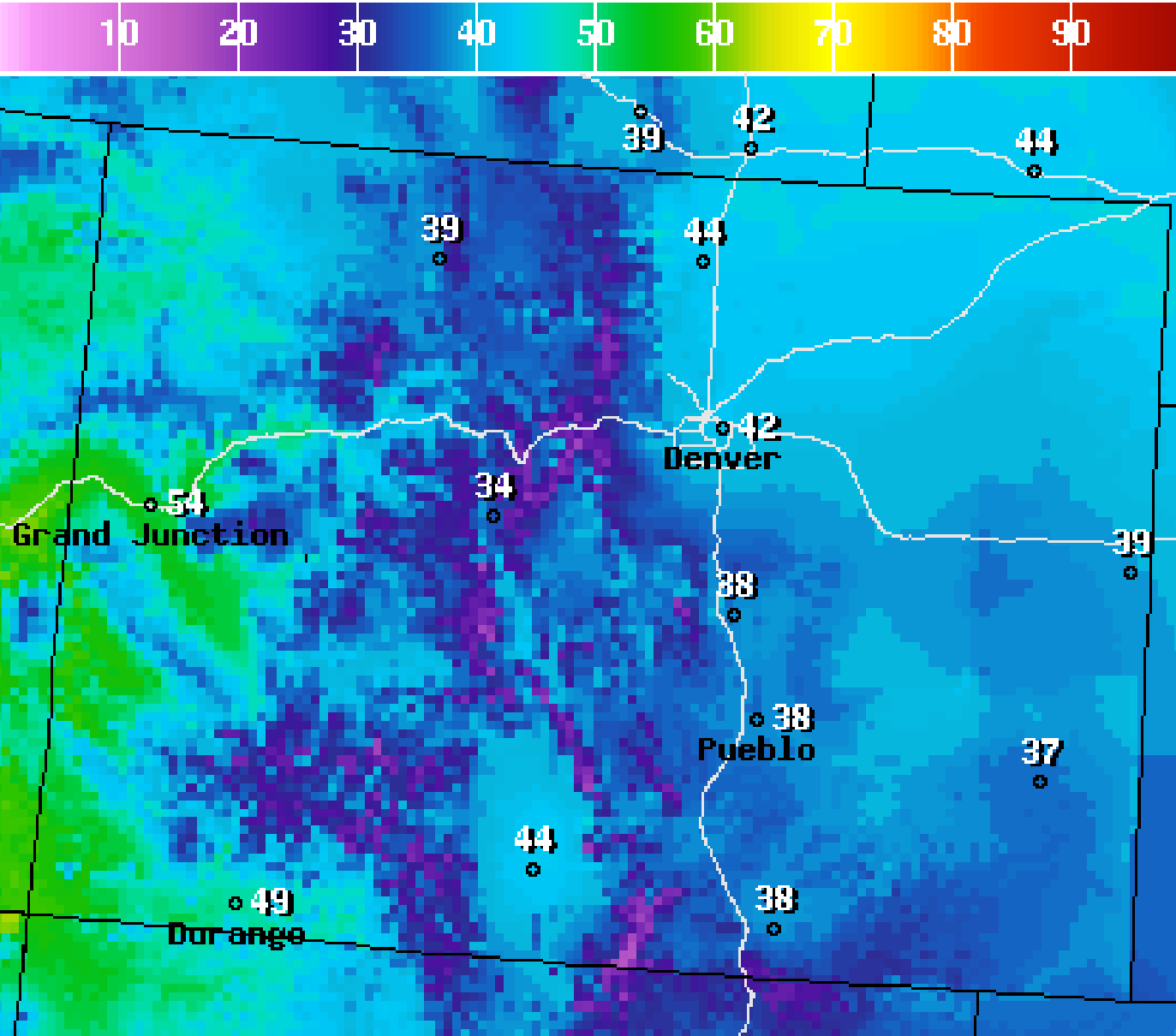
**National Digital Forecast Database**

13z issuance

Graphic created-Mar 12 9:12AM EDT







High Temperature(F) Ending Fri Mar 13 2009 8PM EDT

(Sat Mar 14 2009 00Z)



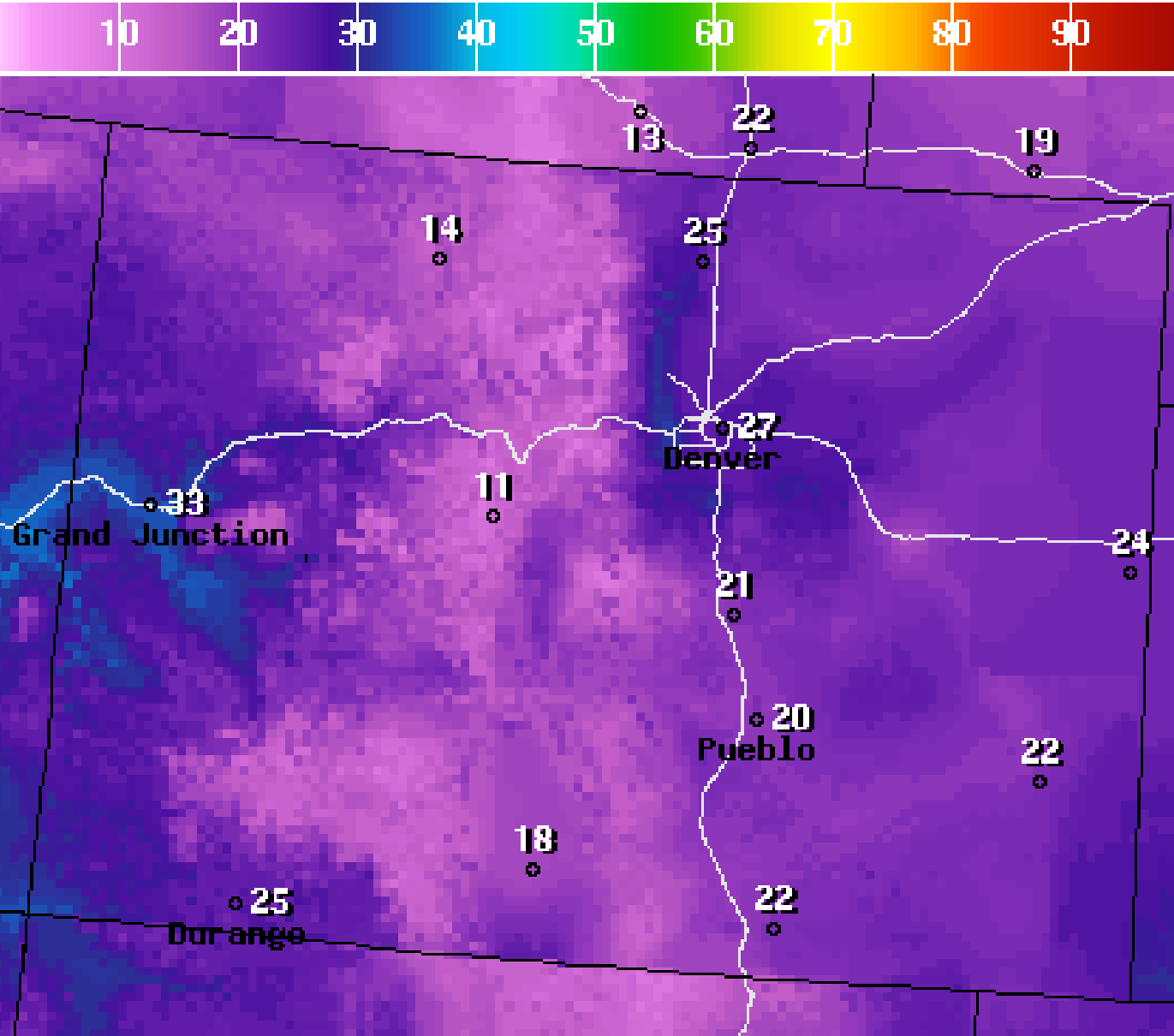
**National Digital Forecast Database**

13z issuance

Graphic created-Mar 12 9:12AM EDT







Low Temperature(F) Ending Sat Mar 14 2009 8AM EDT

(Sat Mar 14 2009 12Z)



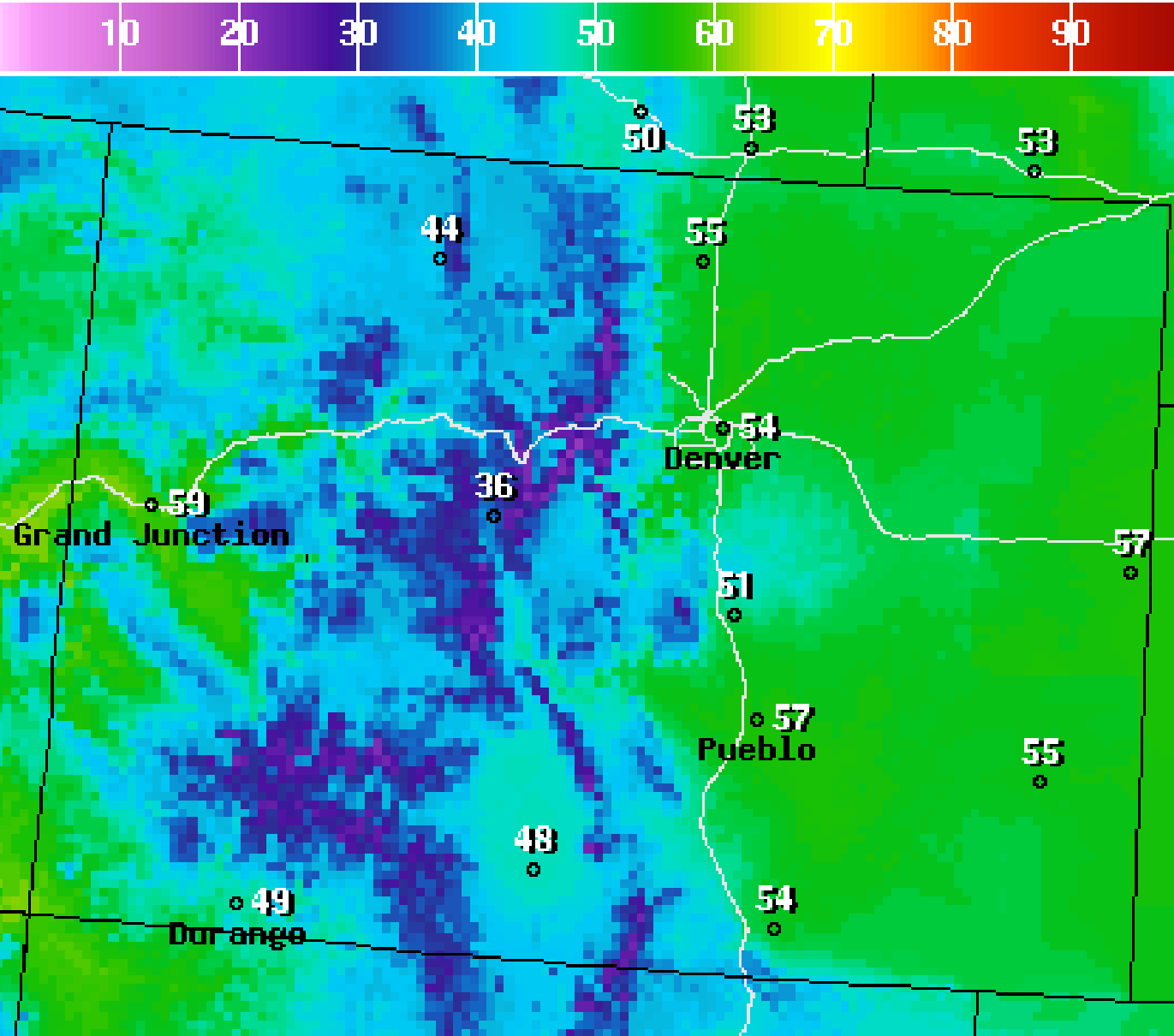
**National Digital Forecast Database**

13z issuance

Graphic created-Mar 12 9:12AM EDT







High Temperature(F) Ending Sat Mar 14 2009 8PM EDT

(Sun Mar 15 2009 00Z)



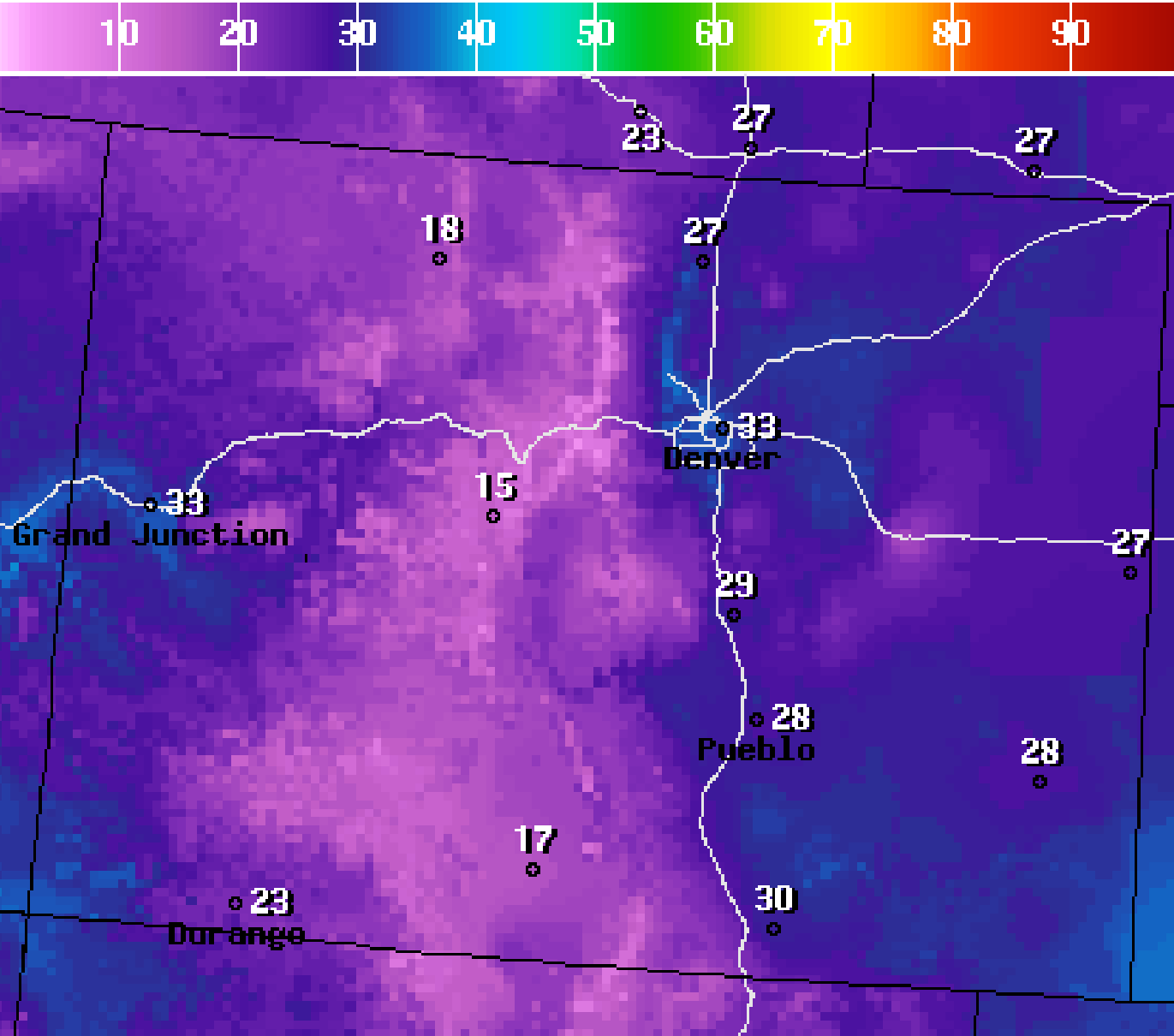
**National Digital Forecast Database**

13z issuance

Graphic created-Mar 12 9:12AM EDT







Low Temperature(F) Ending Sun Mar 15 2009 8AM EDT

(Sun Mar 15 2009 12Z)



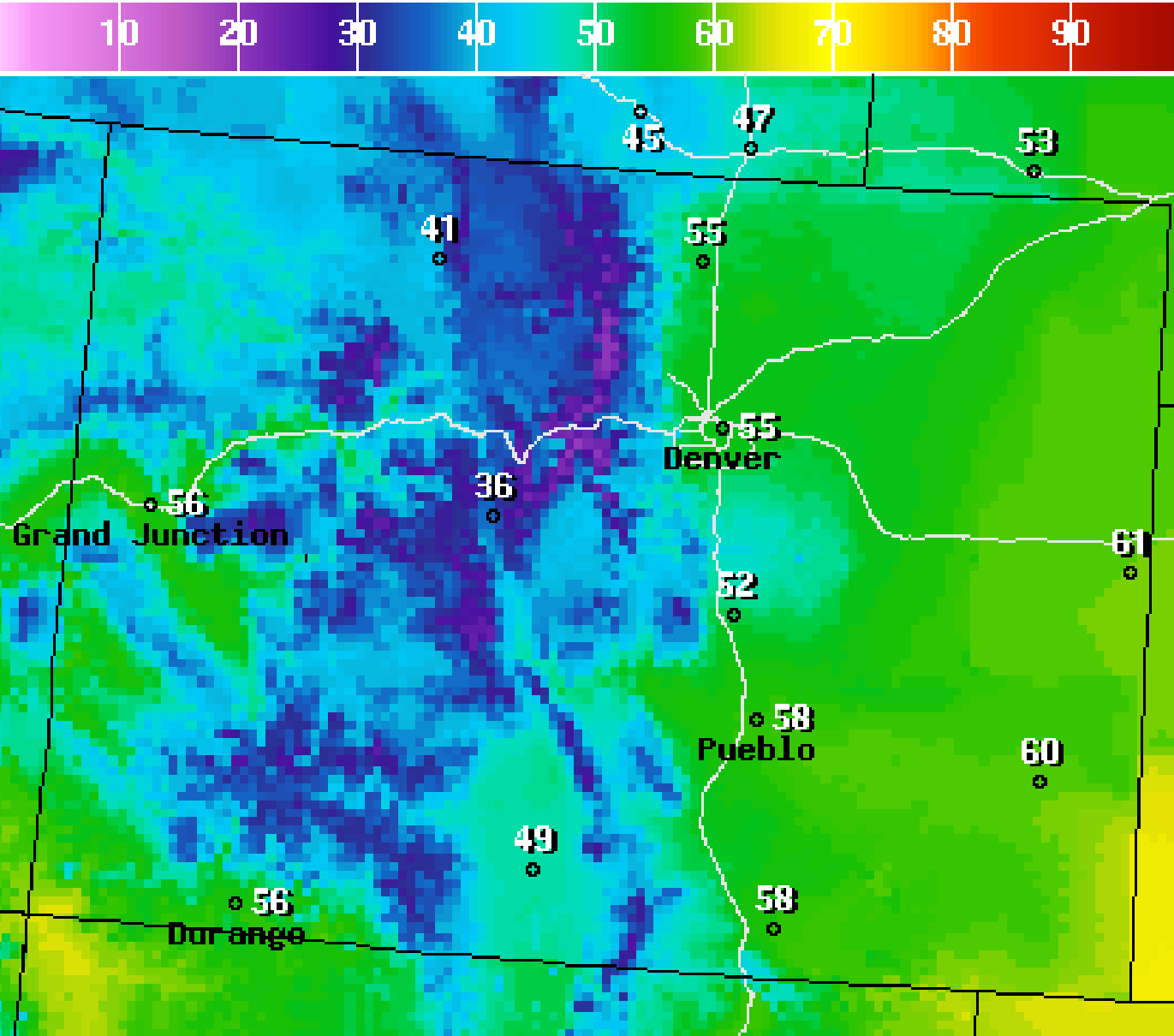
**National Digital Forecast Database**

12z issuance

Graphic created-Mar 12 8:24AM EDT







High Temperature(F) Ending Sun Mar 15 2009 8PM EDT

(Mon Mar 16 2009 00Z)



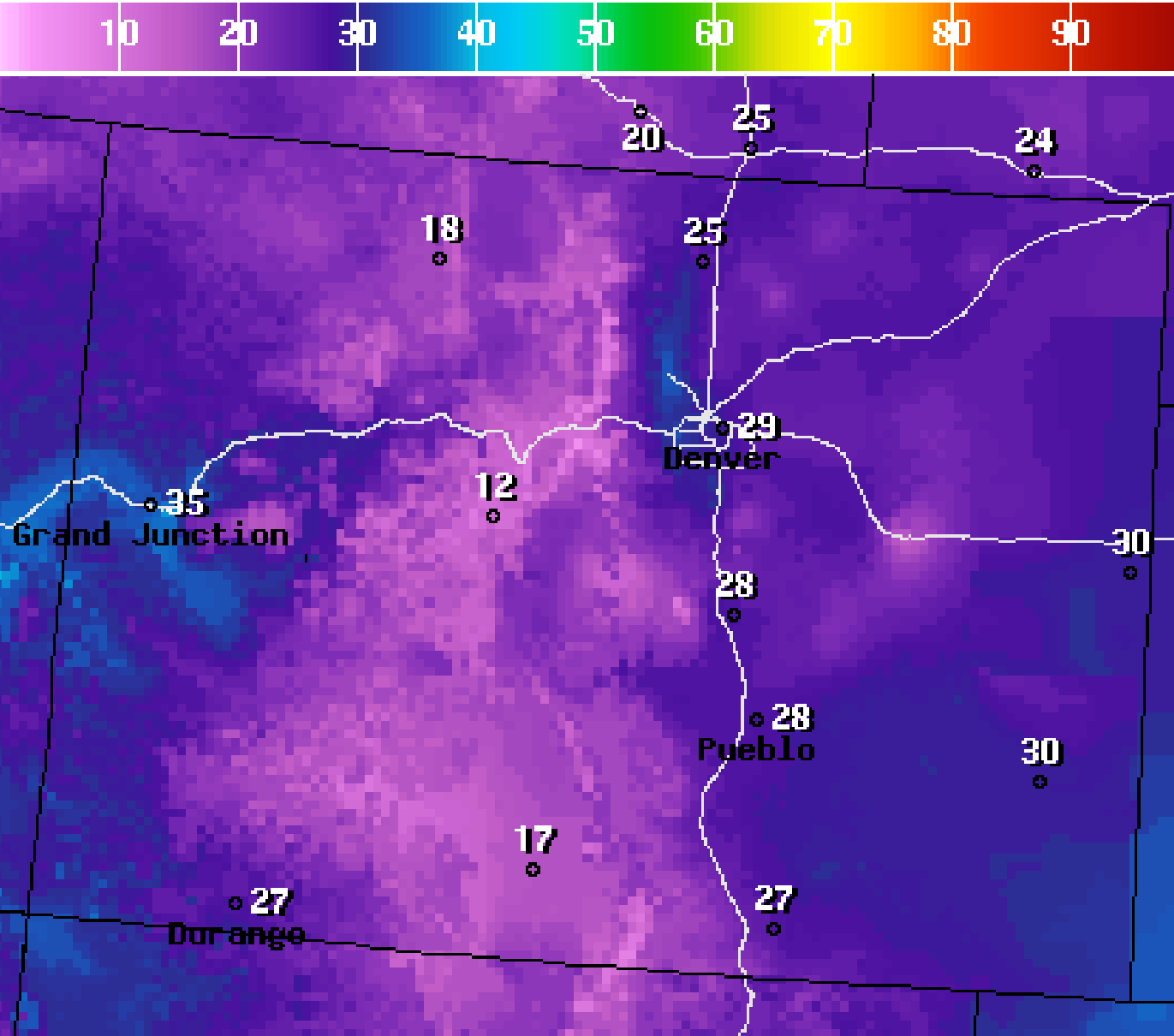
**National Digital Forecast Database**

12z issuance

Graphic created-Mar 12 8:24AM EDT







Low Temperature(F) Ending Mon Mar 16 2009 8AM EDT

(Mon Mar 16 2009 12Z)

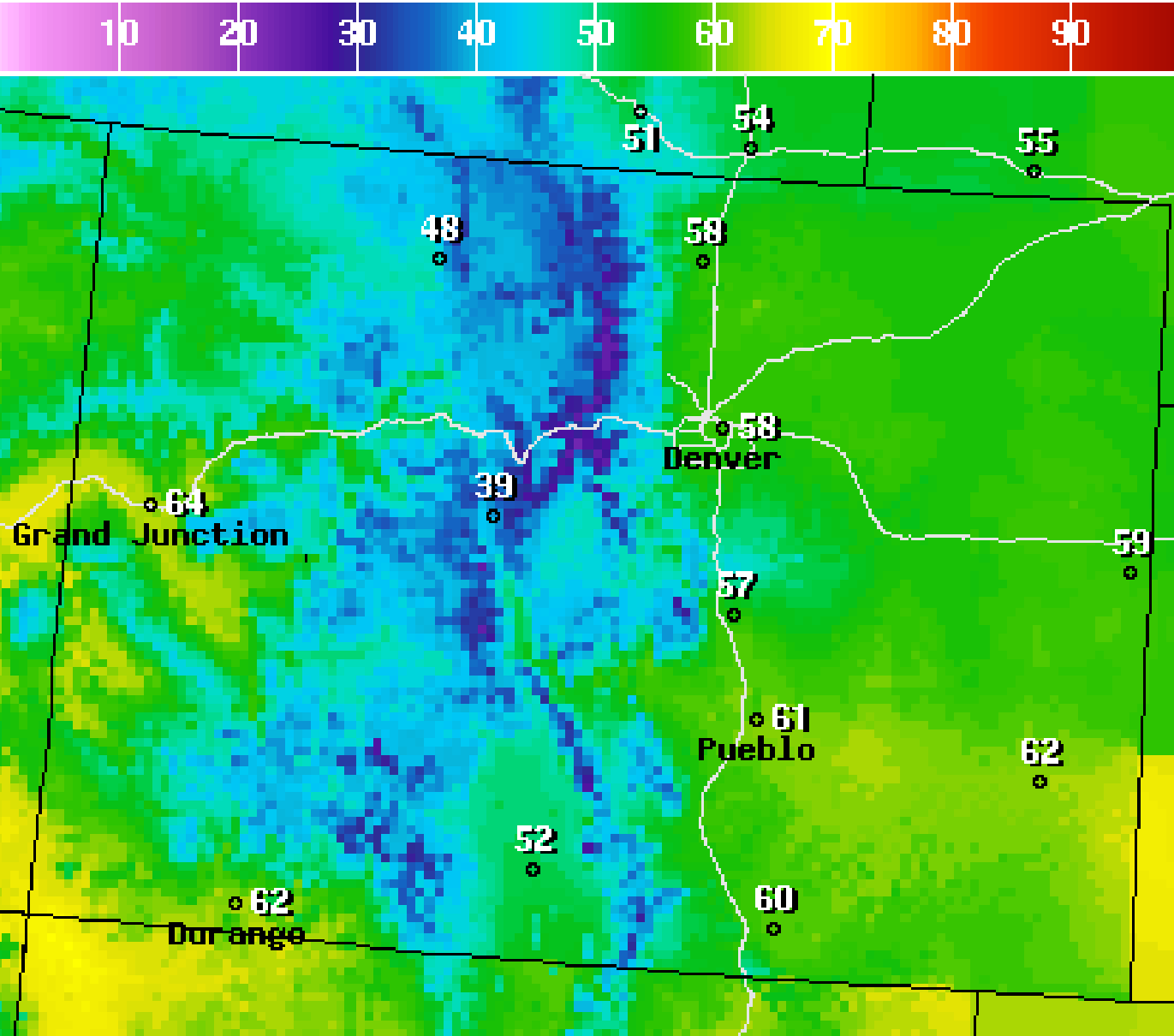


**National Digital Forecast Database**

12z issuance

Graphic created-Mar 12 8:24AM EDT





High Temperature(F) Ending Mon Mar 16 2009 8PM EDT

(Tue Mar 17 2009 00Z)



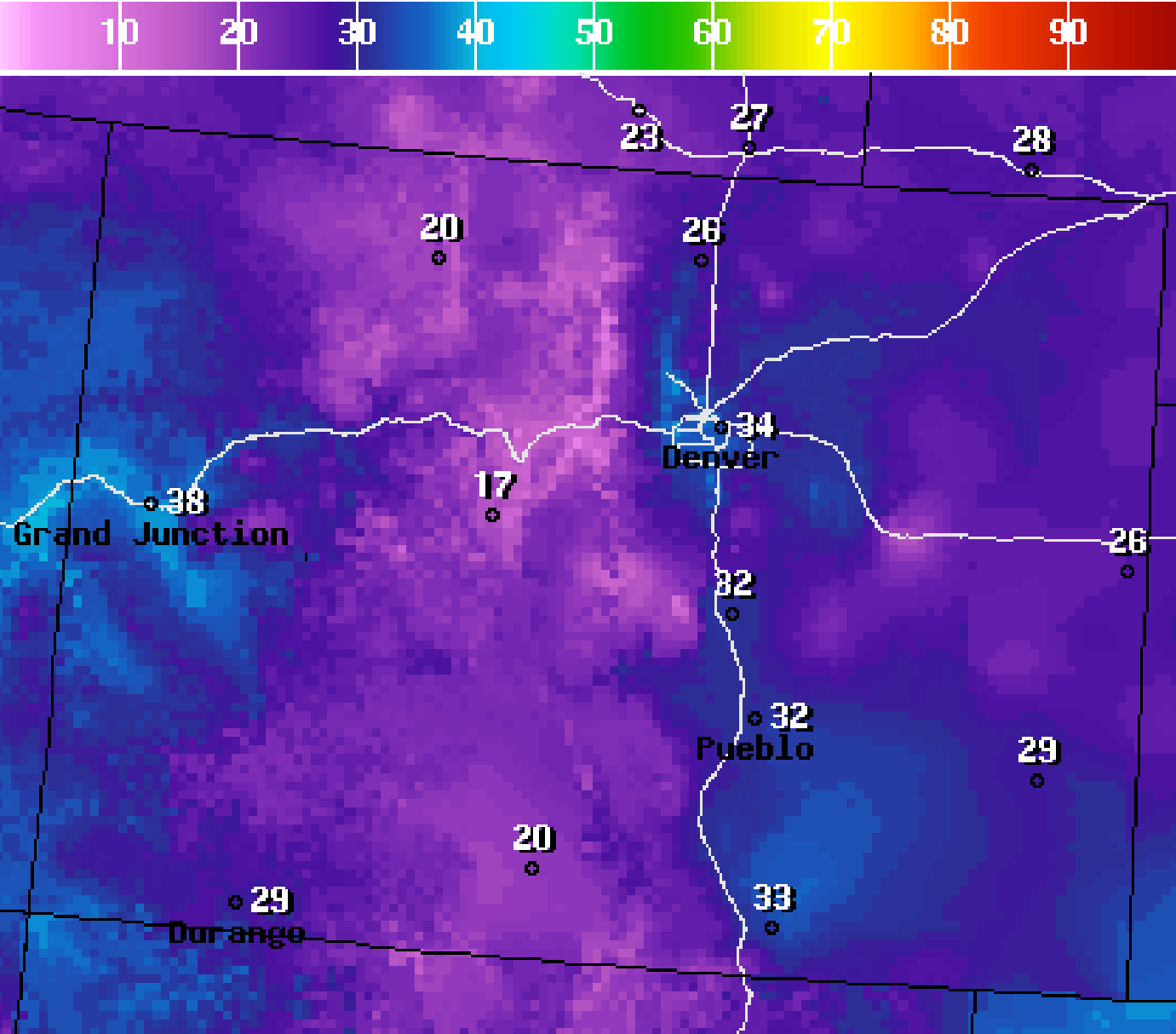
**National Digital Forecast Database**

12z issuance

Graphic created-Mar 12 8:24AM EDT







Low Temperature(F) Ending Tue Mar 17 2009 8AM EDT

(Tue Mar 17 2009 12Z)

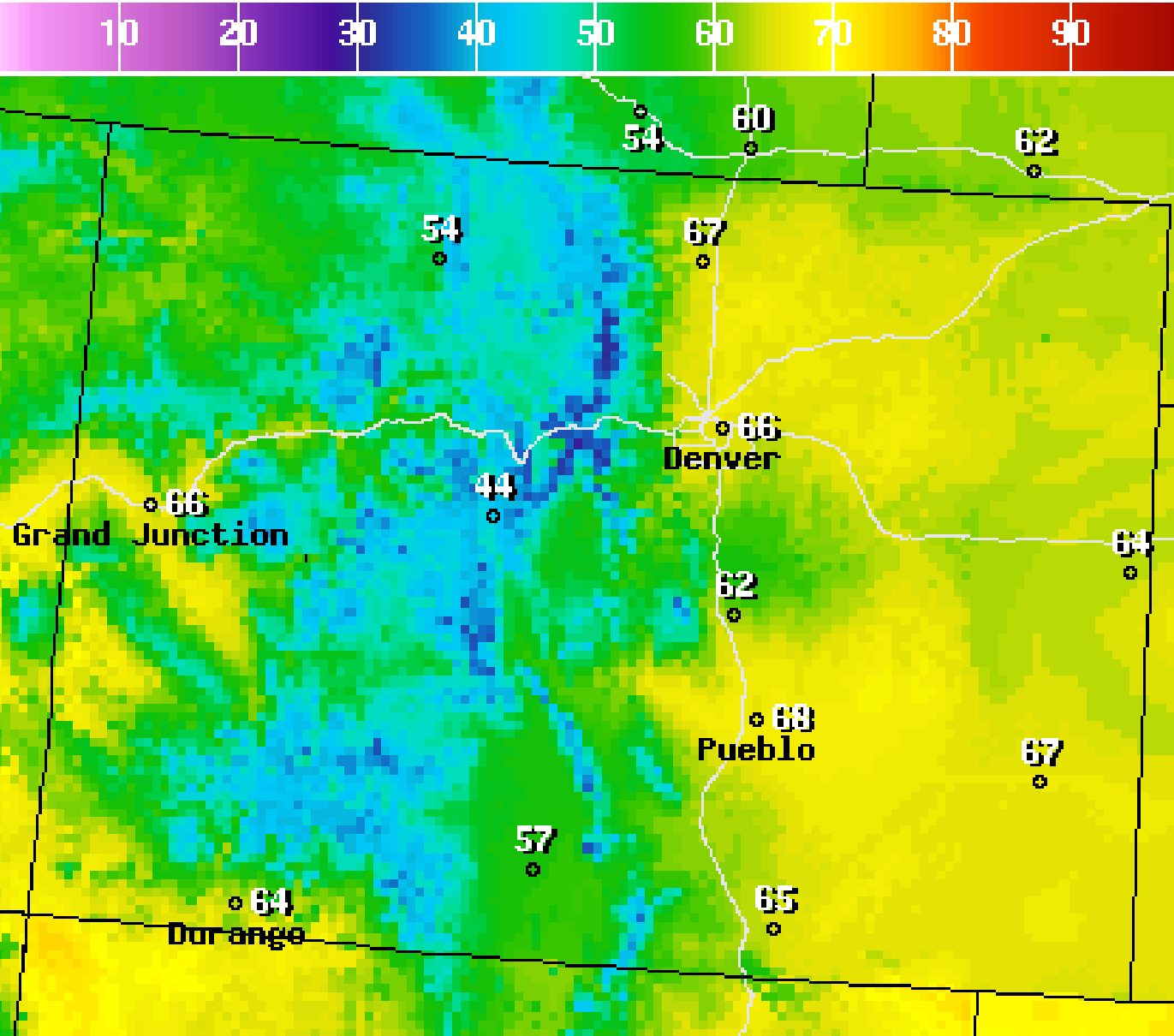


**National Digital Forecast Database**

12z issuance

Graphic created-Mar 12 8:24AM EDT





High Temperature(F) Ending Tue Mar 17 2009 8PM EDT

(Wed Mar 18 2009 00Z)



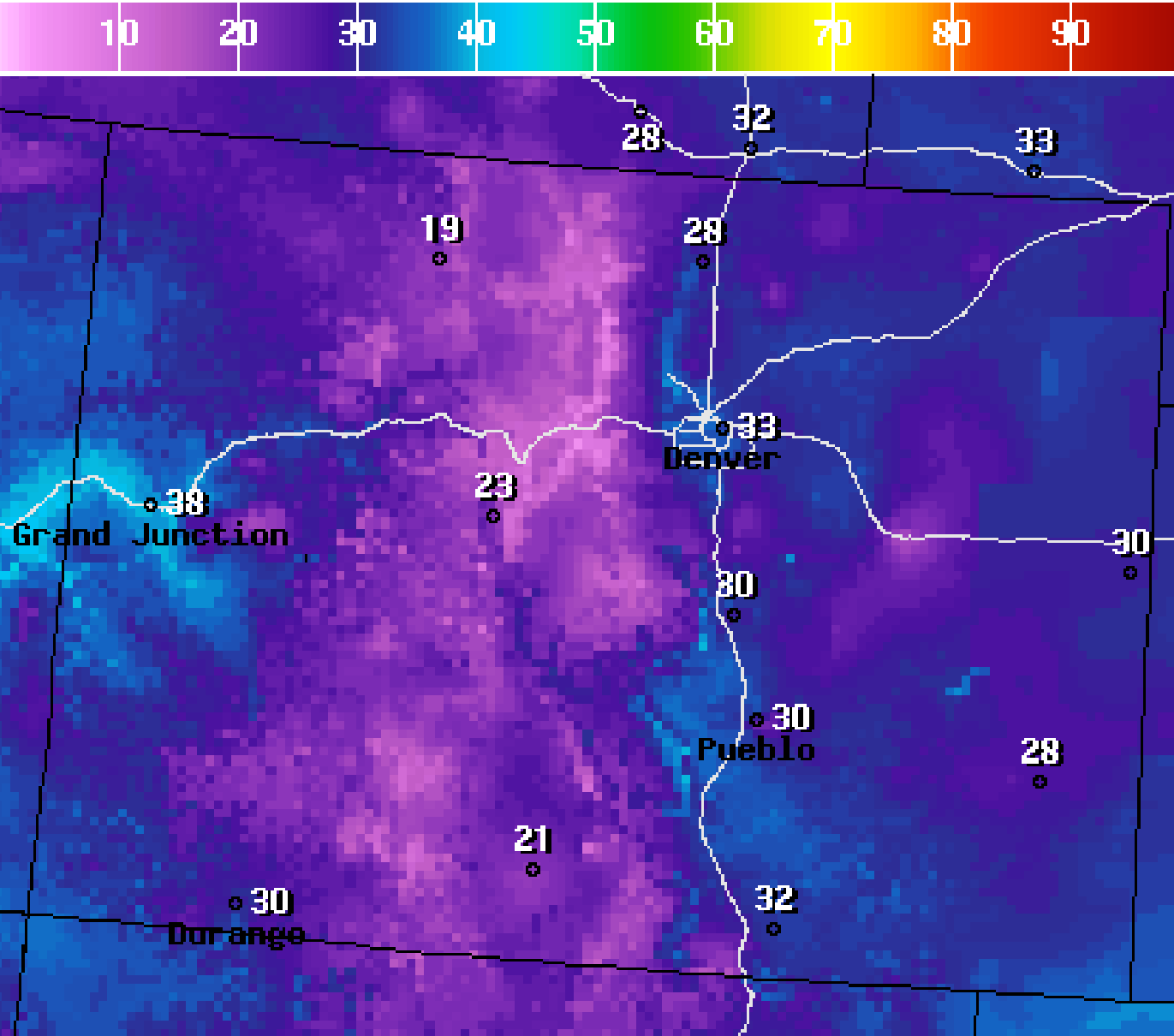
**National Digital Forecast Database**

12z issuance

Graphic created-Mar 12 8:24AM EDT







Low Temperature(F) Ending Wed Mar 18 2009 8AM EDT

(Wed Mar 18 2009 12Z)

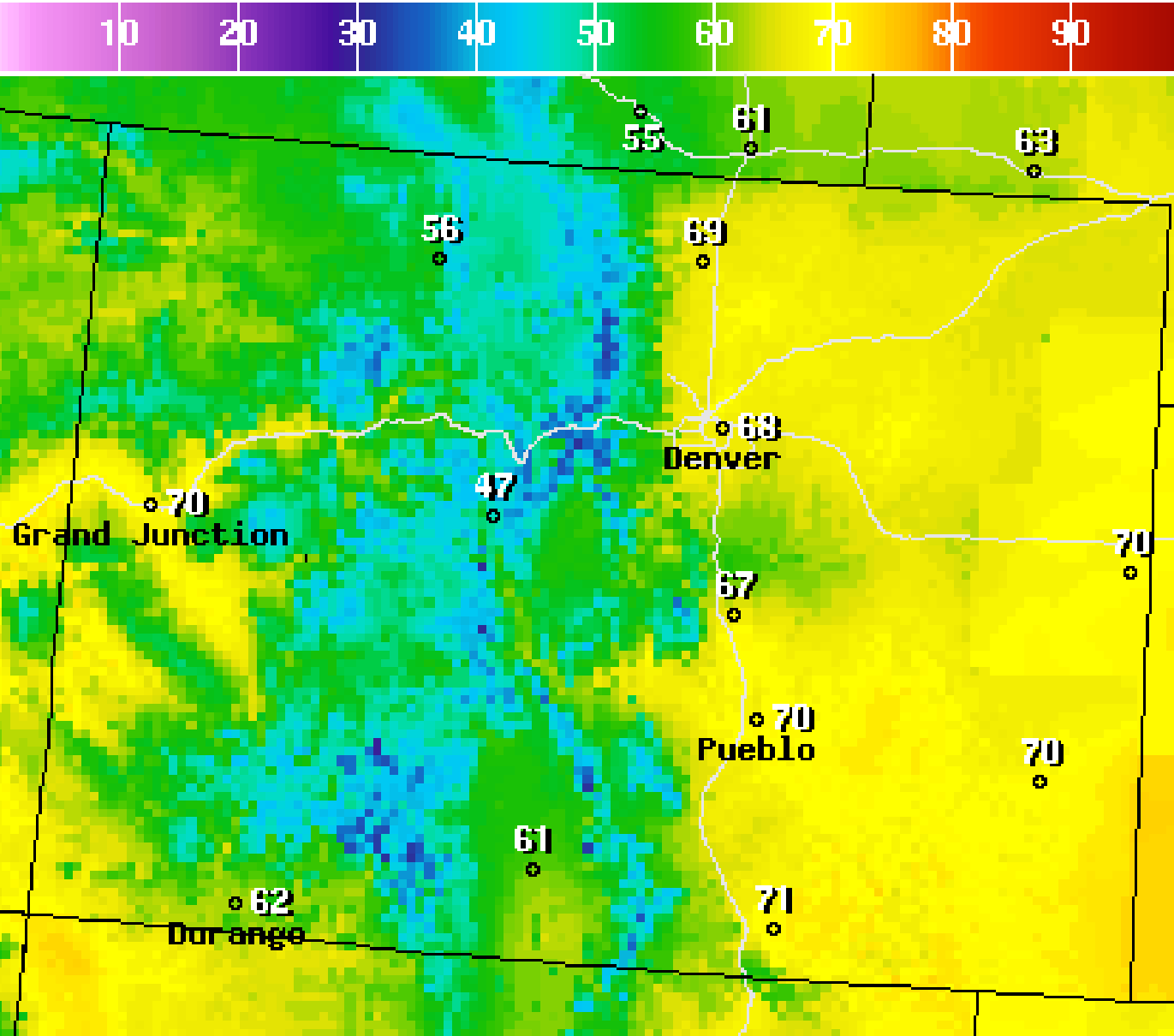


**National Digital Forecast Database**

12z issuance

Graphic created-Mar 12 8:24AM EDT





High Temperature(F) Ending Wed Mar 18 2009 8PM EDT

(Thu Mar 19 2009 00Z)



**National Digital Forecast Database**

12z issuance

Graphic created-Mar 12 8:24AM EDT









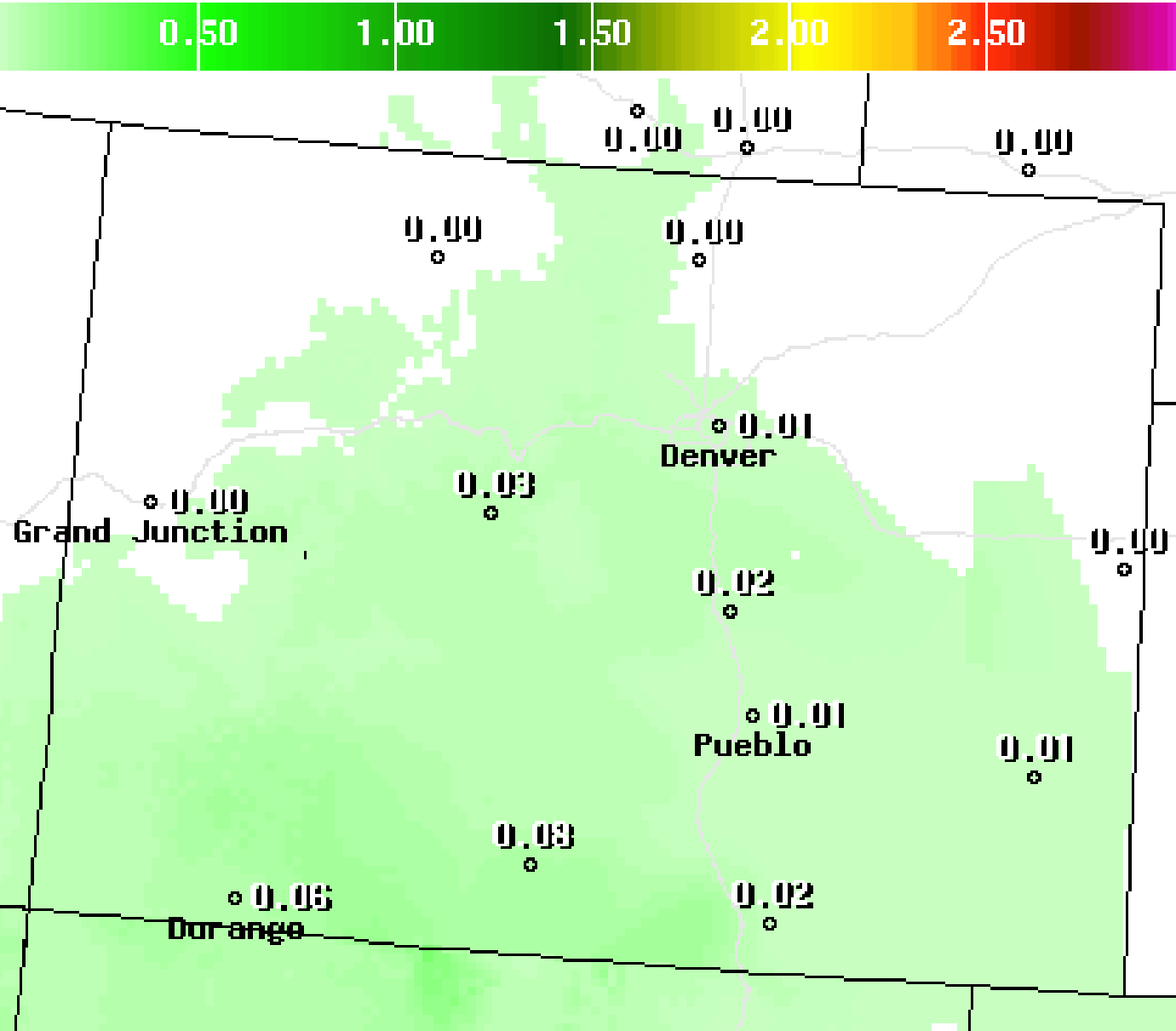
(Fri Mar 13 2009 00Z)



13z issuance

Graphic created-Mar 12 9:16AM EDT





6Hr Precip.Amt(in) Ending Fri Mar 13 2009 2AM EDT

(Fri Mar 13 2009 06Z)

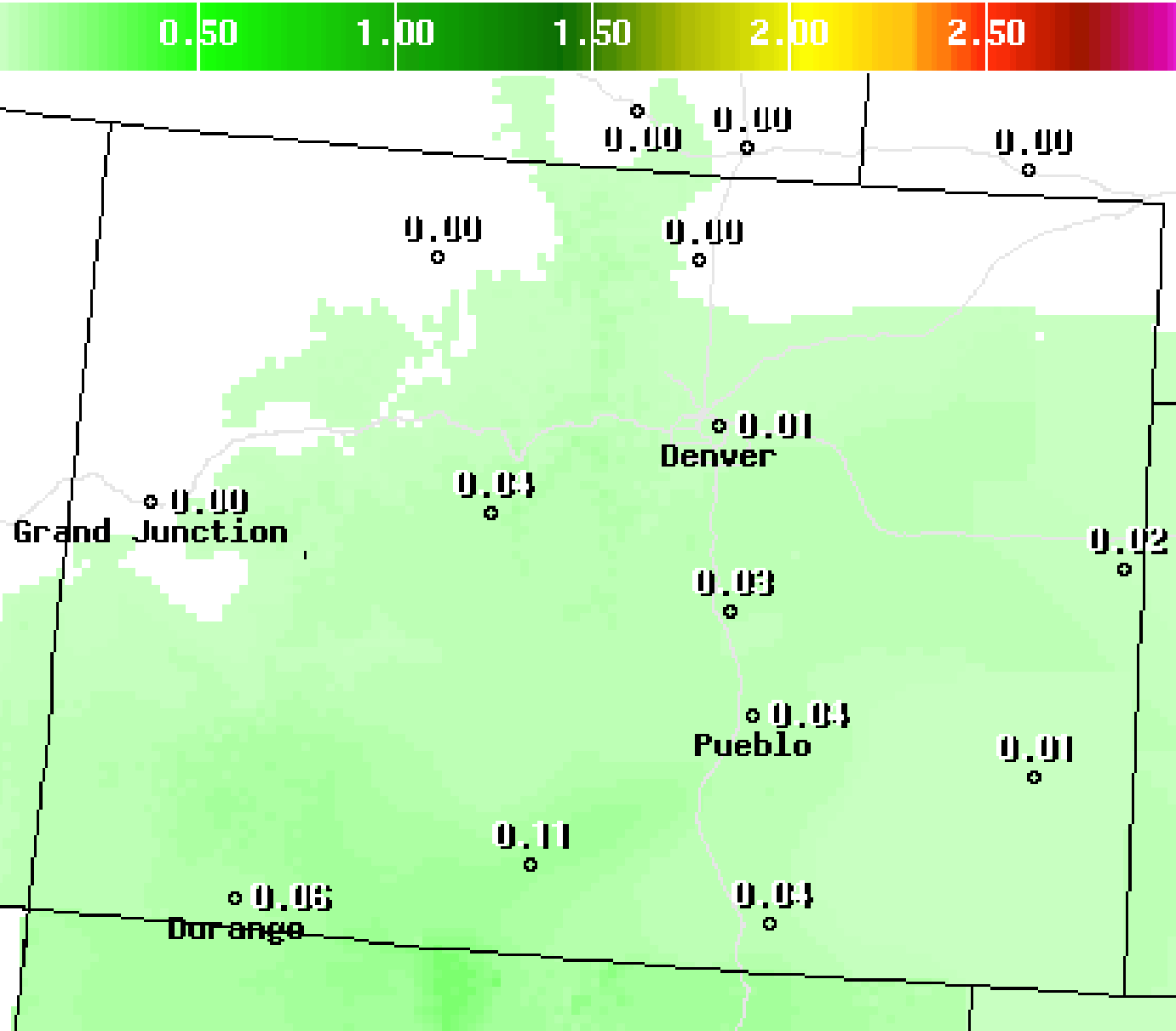


**National Digital Forecast Database**

13z issuance

Graphic created-Mar 12 9:16AM EDT





6Hr Precip.Amt(in) Ending Fri Mar 13 2009 8AM EDT

(Fri Mar 13 2009 12Z)



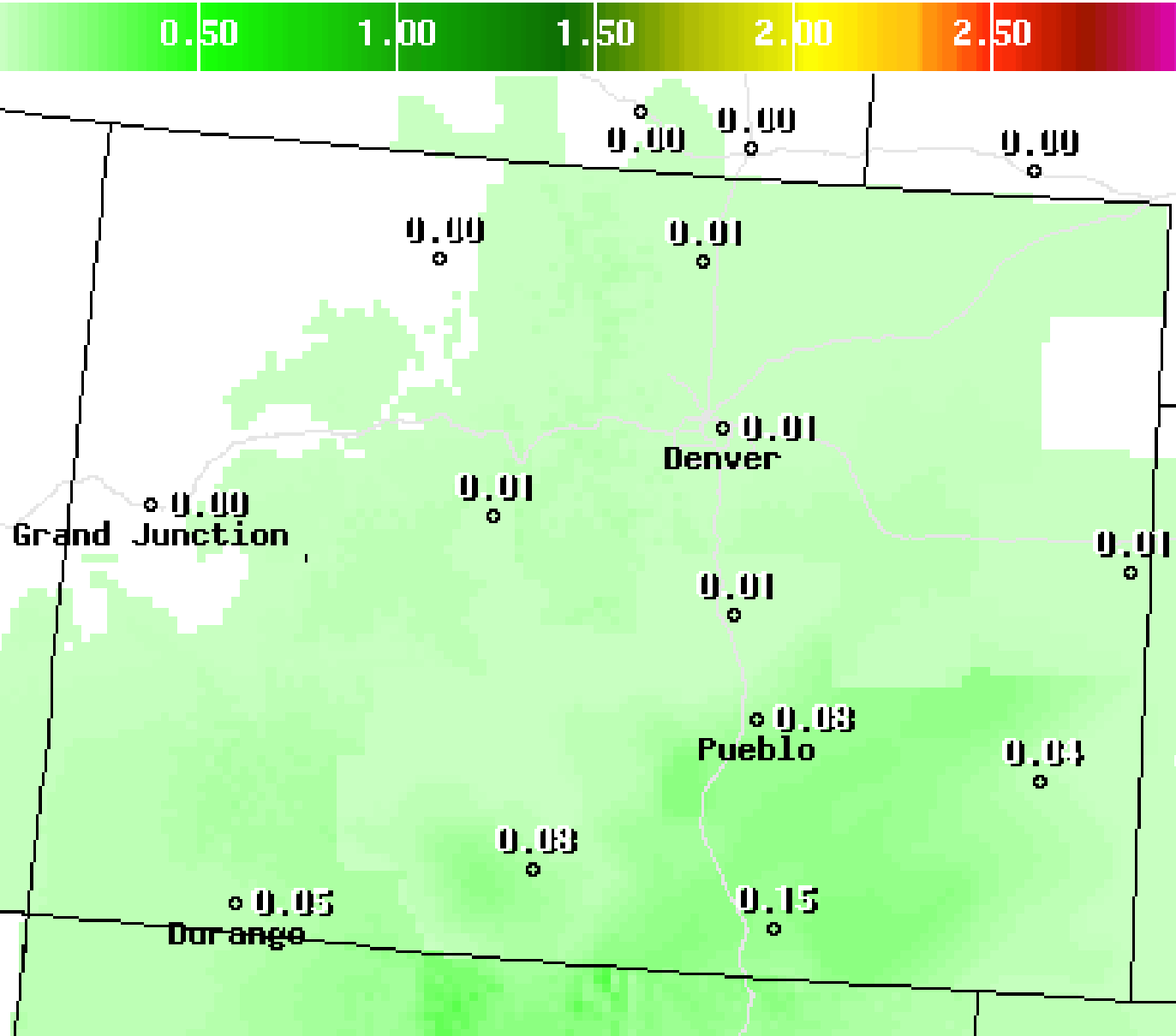
**National Digital Forecast Database**

13z issuance

Graphic created-Mar 12 9:16AM EDT







6Hr Precip.Amt(in) Ending Fri Mar 13 2009 2PM EDT

(Fri Mar 13 2009 18Z)

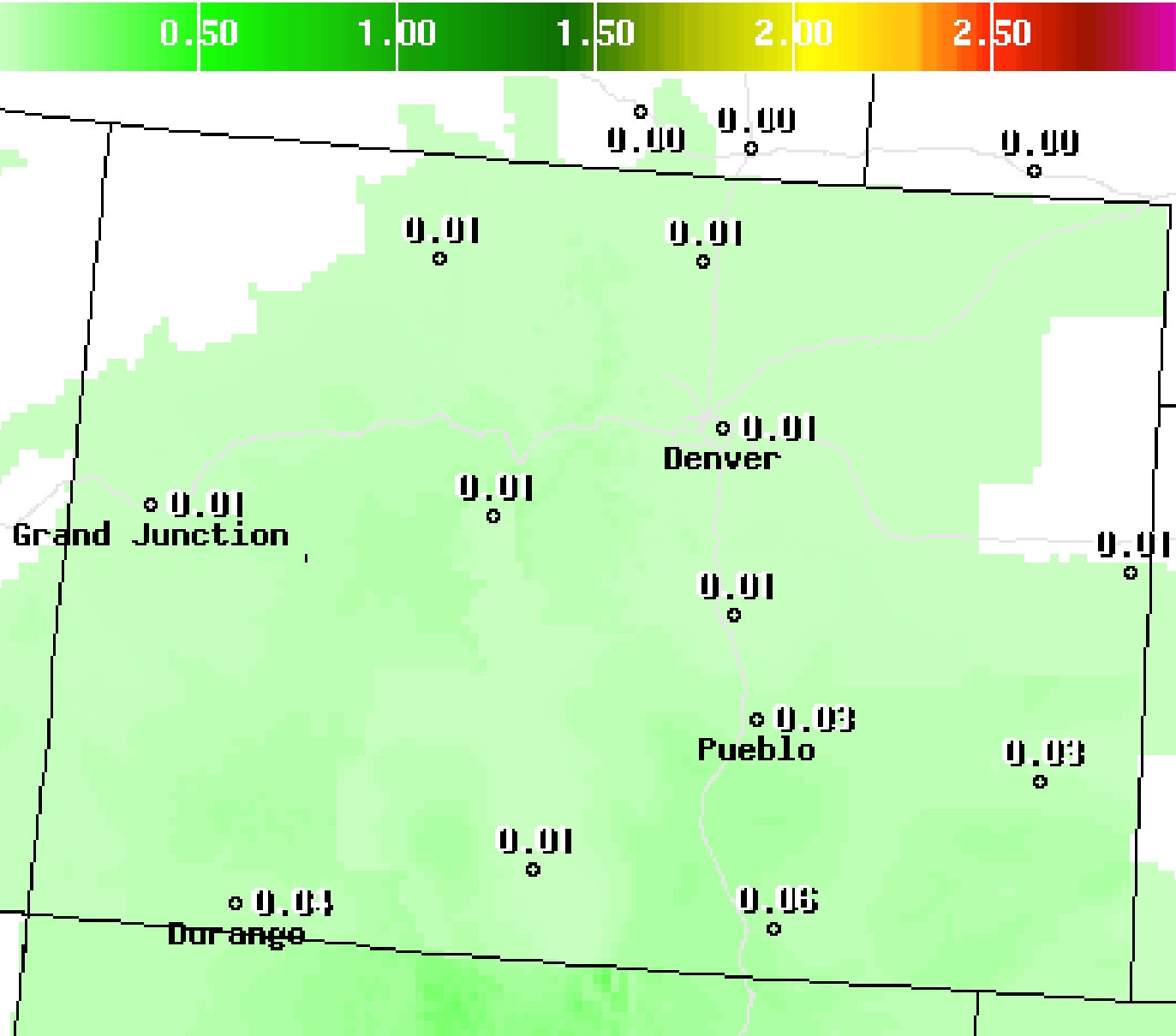


**National Digital Forecast Database**

13z issuance

Graphic created-Mar 12 9:16AM EDT





6Hr Precip.Amt(in) Ending Fri Mar 13 2009 8PM EDT

(Sat Mar 14 2009 00Z)



**National Digital Forecast Database**

13z issuance

Graphic created-Mar 12 9:16AM EDT





(Sat Mar 14 2009 06Z)



13z issuance

Graphic created-Mar 12 9:16AM EDT





(Sat Mar 14 2009 12Z)



13z issuance

Graphic created-Mar 12 9:16AM EDT





(Sun Mar 15 2009 00Z)

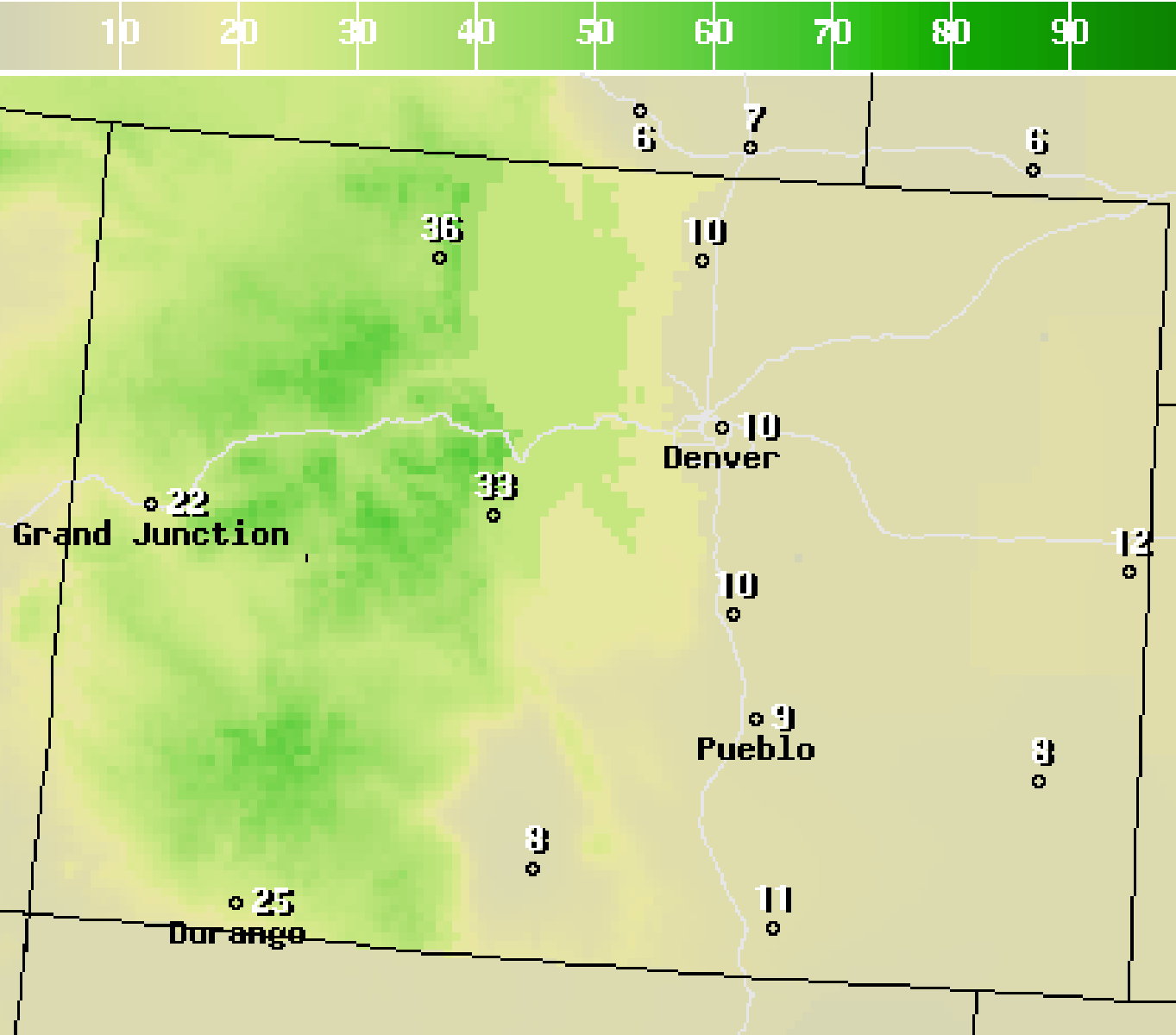


13z issuance

Graphic created-Mar 12 9:16AM EDT







12Hr Prob.Precip(%) Ending Sun Mar 15 2009 8PM EDT

(Mon Mar 16 2009 00Z)

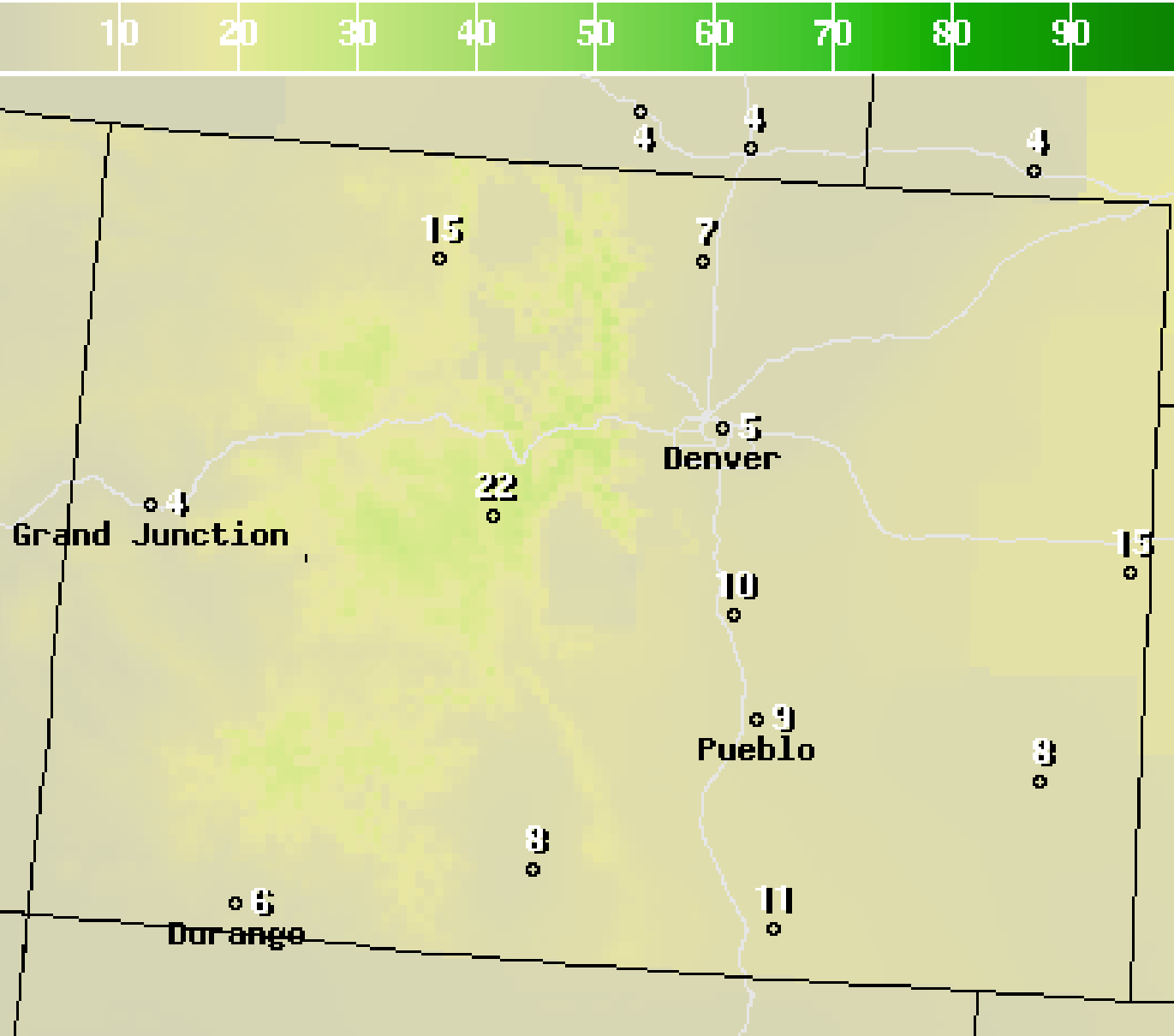


**National Digital Forecast Database**

12z issuance

Graphic created-Mar 12 8:31AM EDT





12Hr Prob. Precip (%) Ending Mon Mar 16 2009 8AM EDT

(Mon Mar 16 2009 12Z)



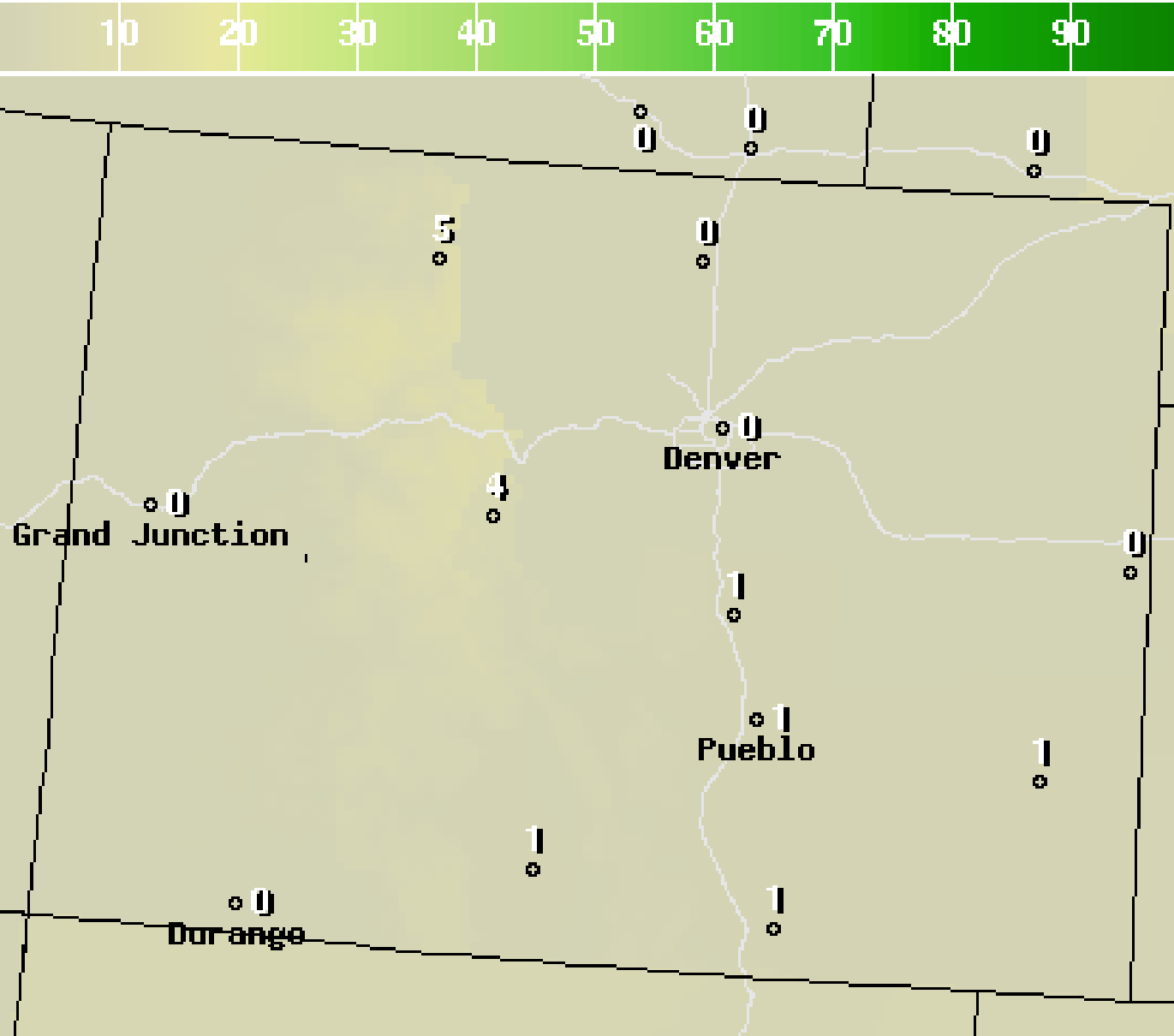
National Digital Forecast Database

12z issuance

Graphic created-Mar 12 8:31AM EDT







12Hr Prob.Precip(%) Ending Mon Mar 16 2009 8PM EDT

(Tue Mar 17 2009 00Z)

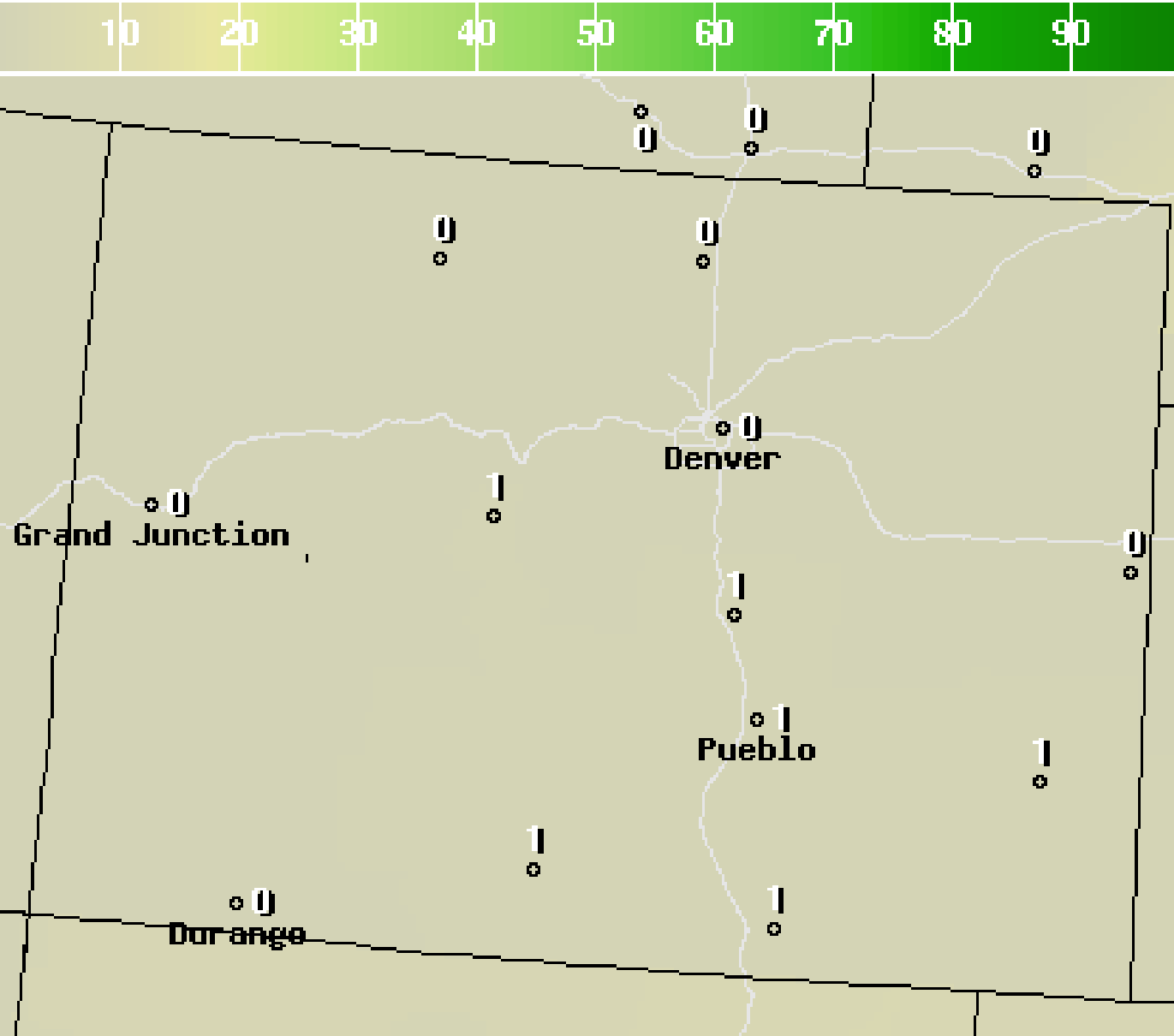


**National Digital Forecast Database**

12z issuance

Graphic created-Mar 12 8:31AM EDT





12Hr Prob.Precip(%) Ending Tue Mar 17 2009 8AM EDT

(Tue Mar 17 2009 12Z)

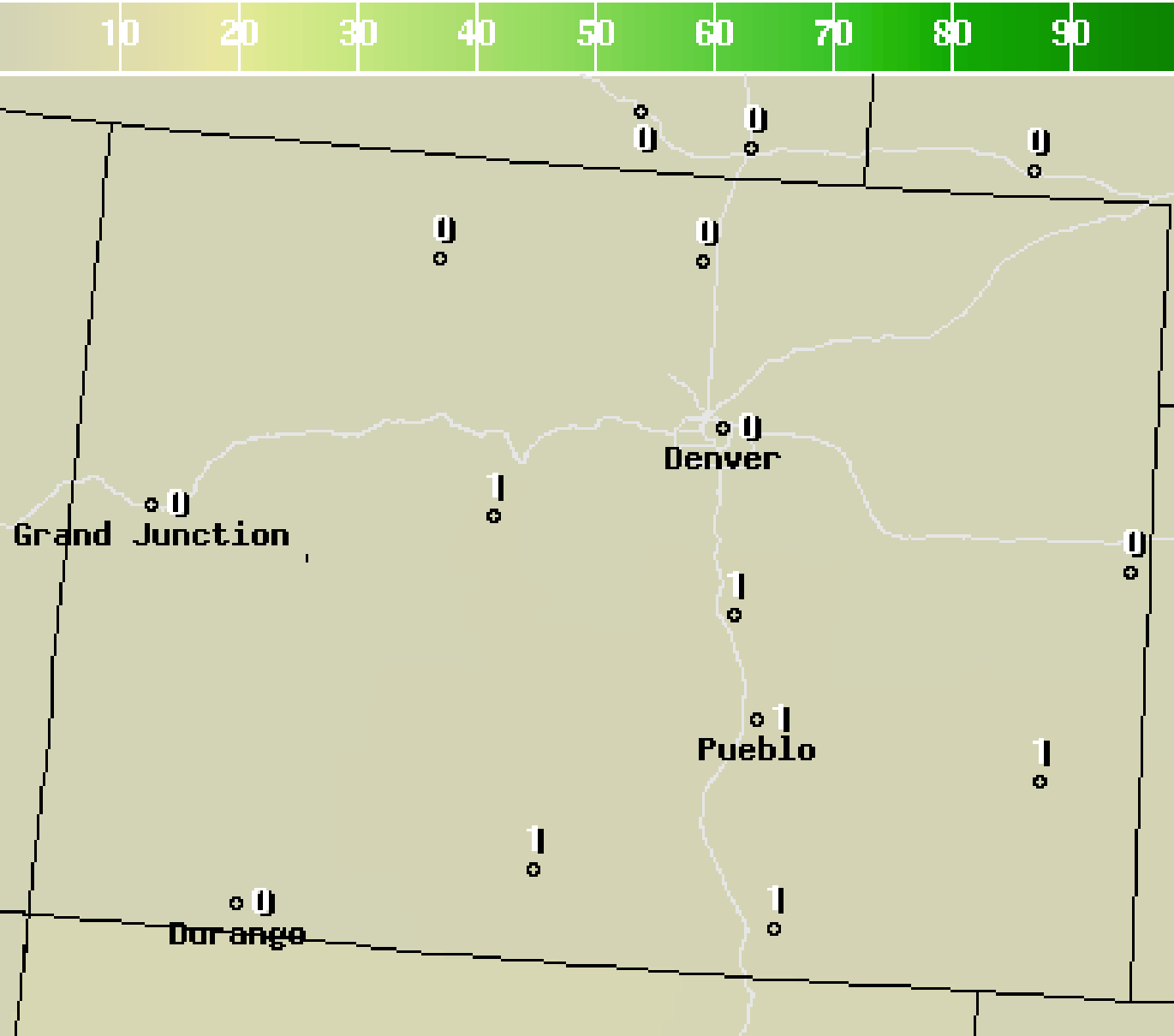


**National Digital Forecast Database**

12z issuance

Graphic created-Mar 12 8:31AM EDT





12Hr Prob.Precip(%) Ending Tue Mar 17 2009 8PM EDT

(Wed Mar 18 2009 00Z)

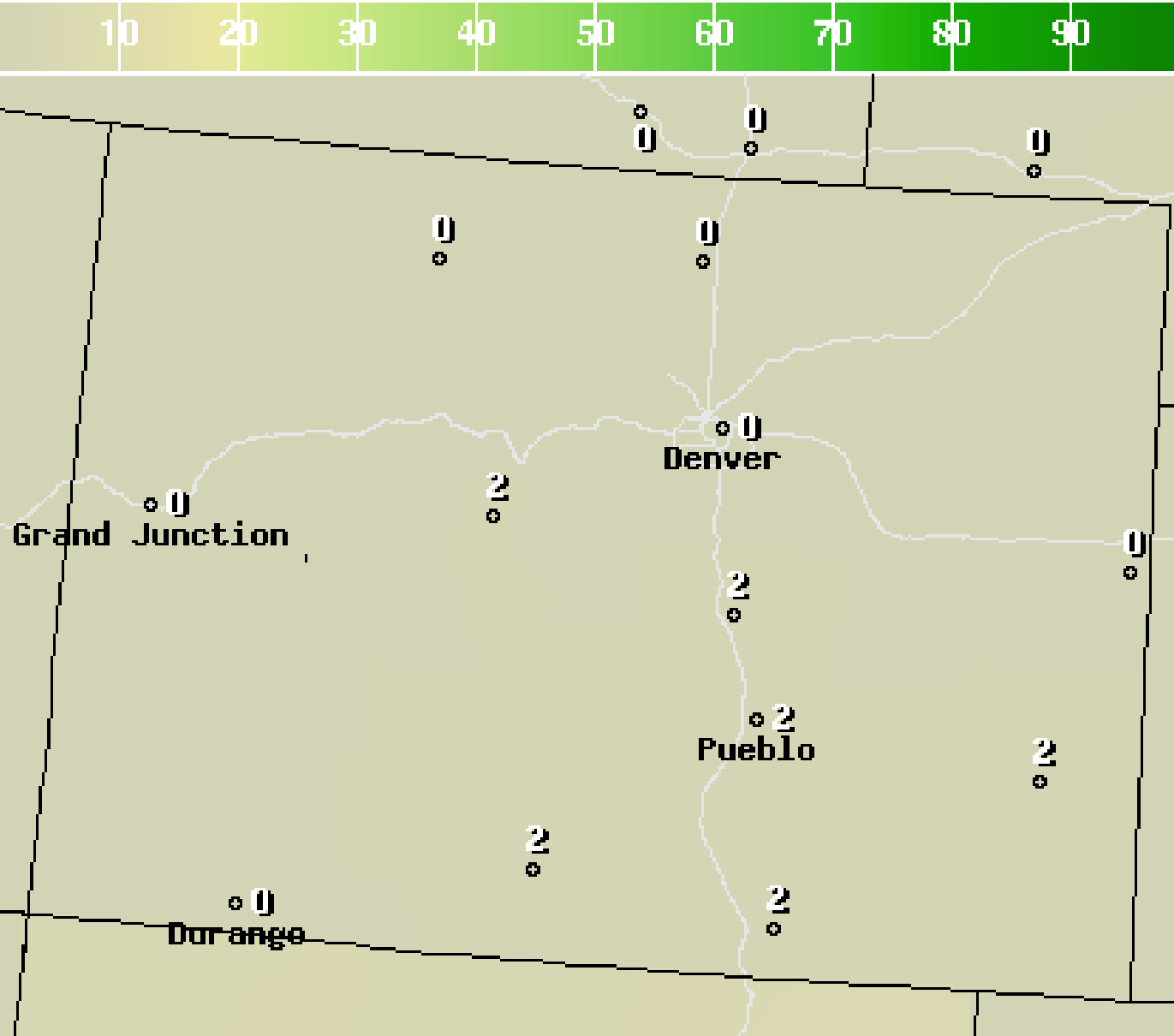


**National Digital Forecast Database**

12z issuance

Graphic created-Mar 12 8:31AM EDT





12Hr Prob.Precip(%) Ending Wed Mar 18 2009 8AM EDT

(Wed Mar 18 2009 12Z)



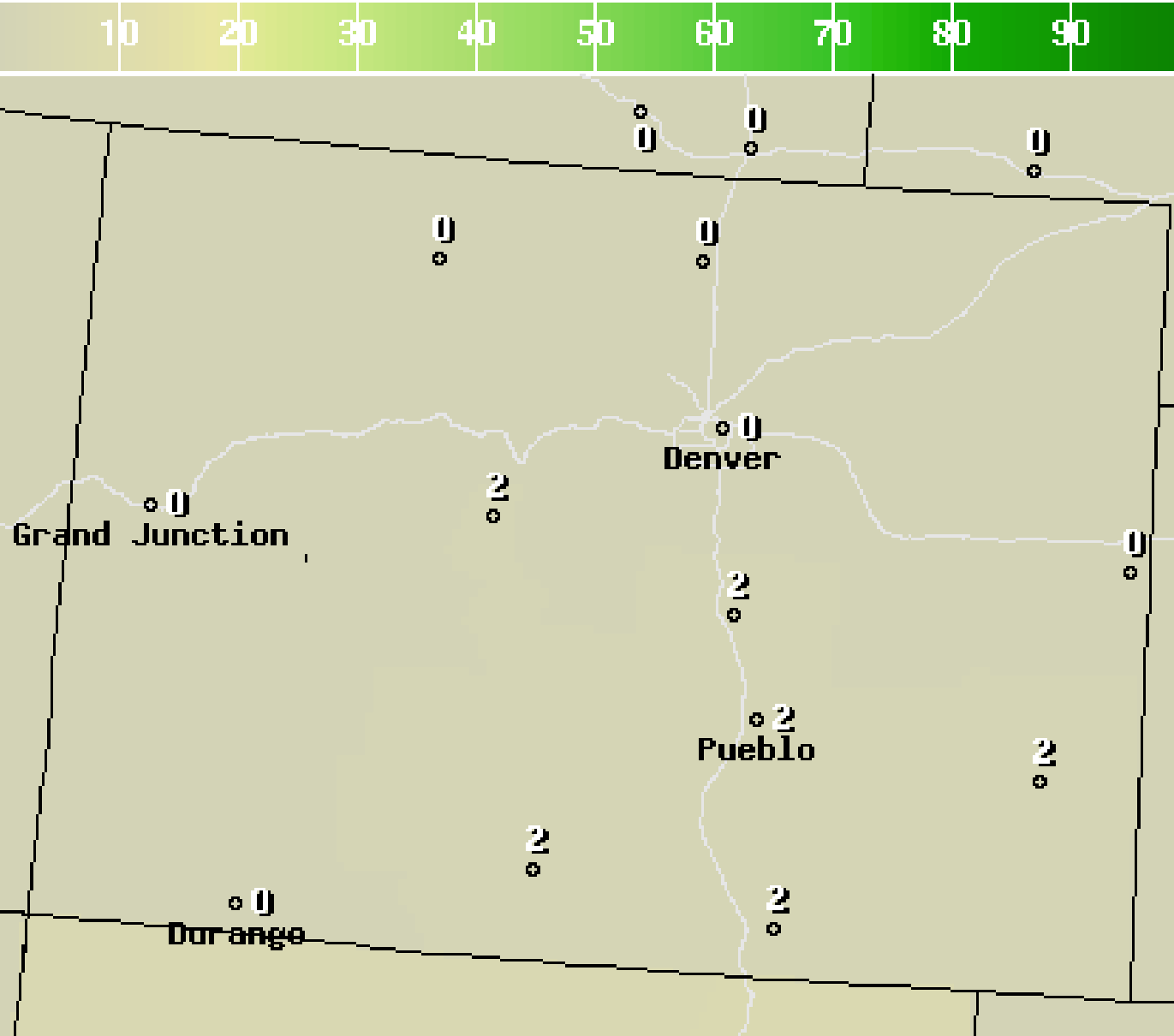
**National Digital Forecast Database**

12z issuance

Graphic created-Mar 12 8:31AM EDT







12Hr Prob.Precip(%) Ending Wed Mar 18 2009 8PM EDT

(Thu Mar 19 2009 00Z)

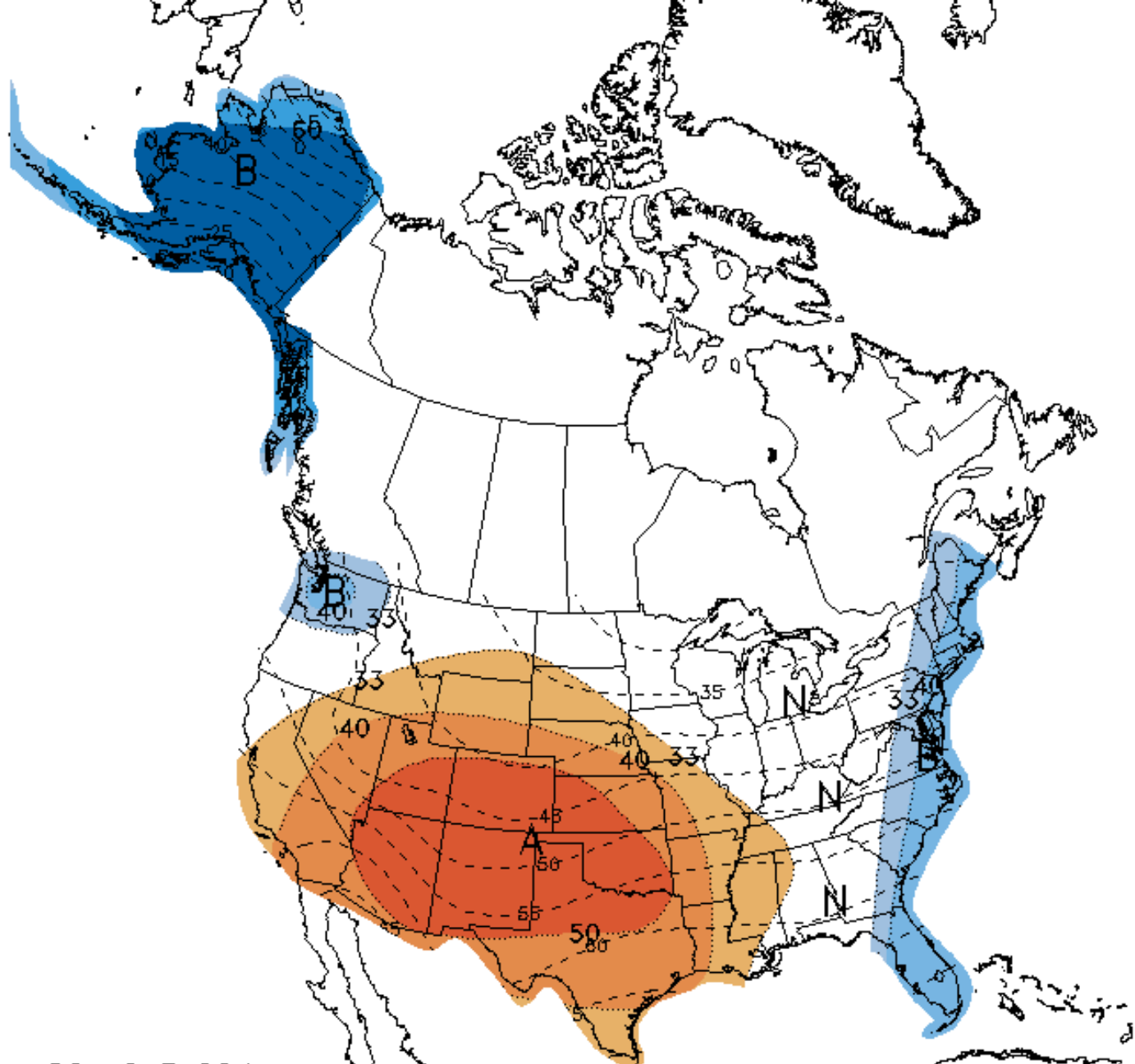


**National Digital Forecast Database**

12z issuance

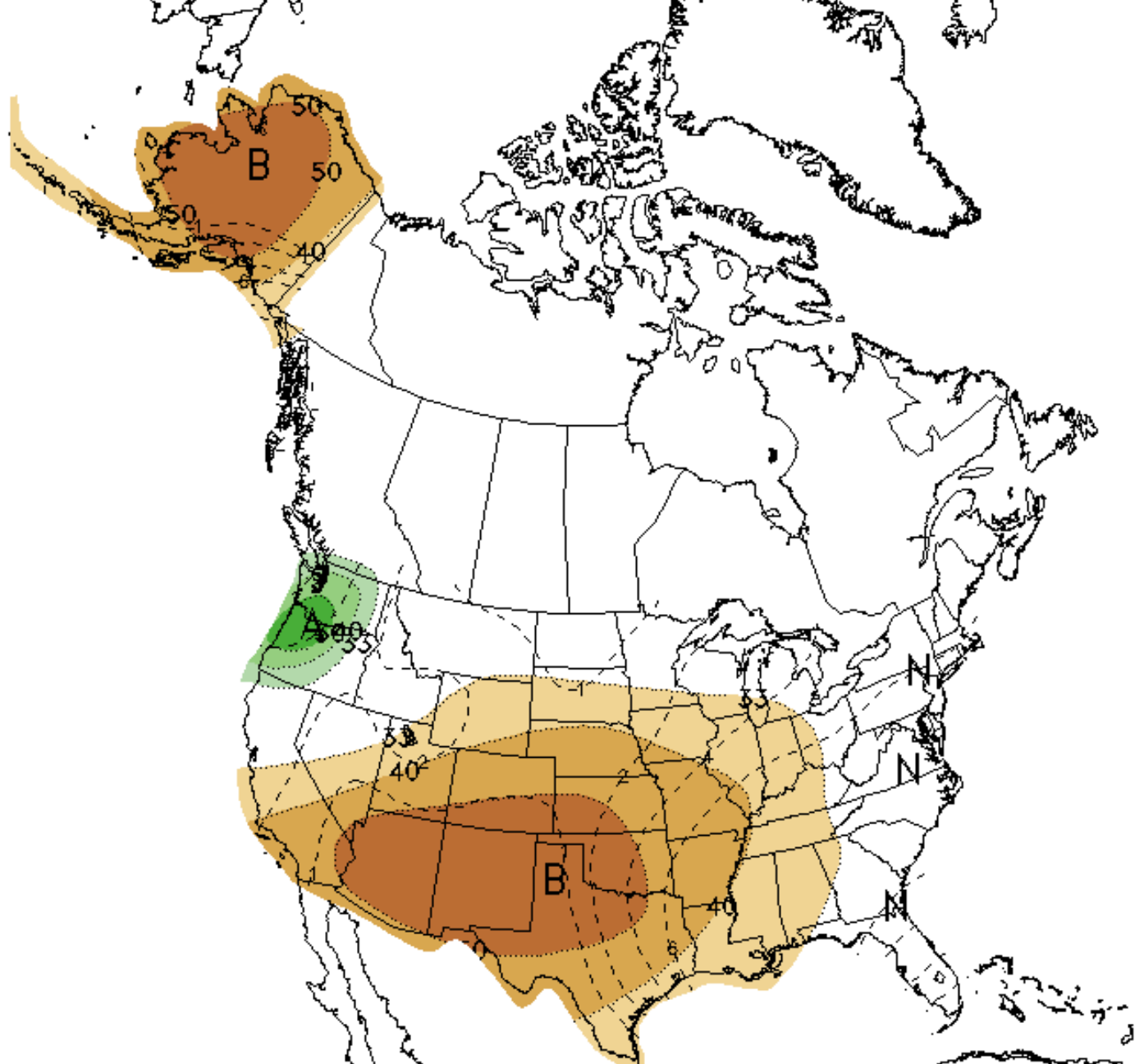
Graphic created-Mar 12 8:31AM EDT





8-14 DAY OUTLOOK  
TEMPERATURE PROBABILITY  
MADE 11 MAR 2009  
VALID MAR 19 - 25, 2009

DASHED BLACK LINES ARE CLIMATOLOGY  
(DEG F) SHADED AREAS ARE FCST  
VALUES ABOVE (A) OR BELOW (B) NORMAL  
UNSHADED AREAS ARE NEAR-NORMAL



8-14 DAY OUTLOOK  
PRECIPITATION PROBABILITY  
MADE 11 MAR 2009  
VALID MAR 19 - 25, 2009

DASHED BLACK LINES ARE CLIMATOLOGY  
(TENTH OF INCHES) SHADED AREAS ARE FCS  
VALUES ABOVE (A) OR BELOW (B) MEDIAN  
UNSHADED AREAS ARE NEAR-MEDIAN