

NRCS - Snow Survey & Water Supply Forecasting

Mike Gillespie

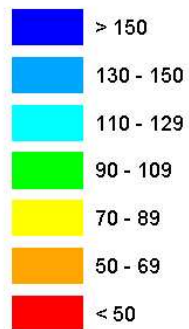
Water Availability Task Force
Meeting

March 15, 2007

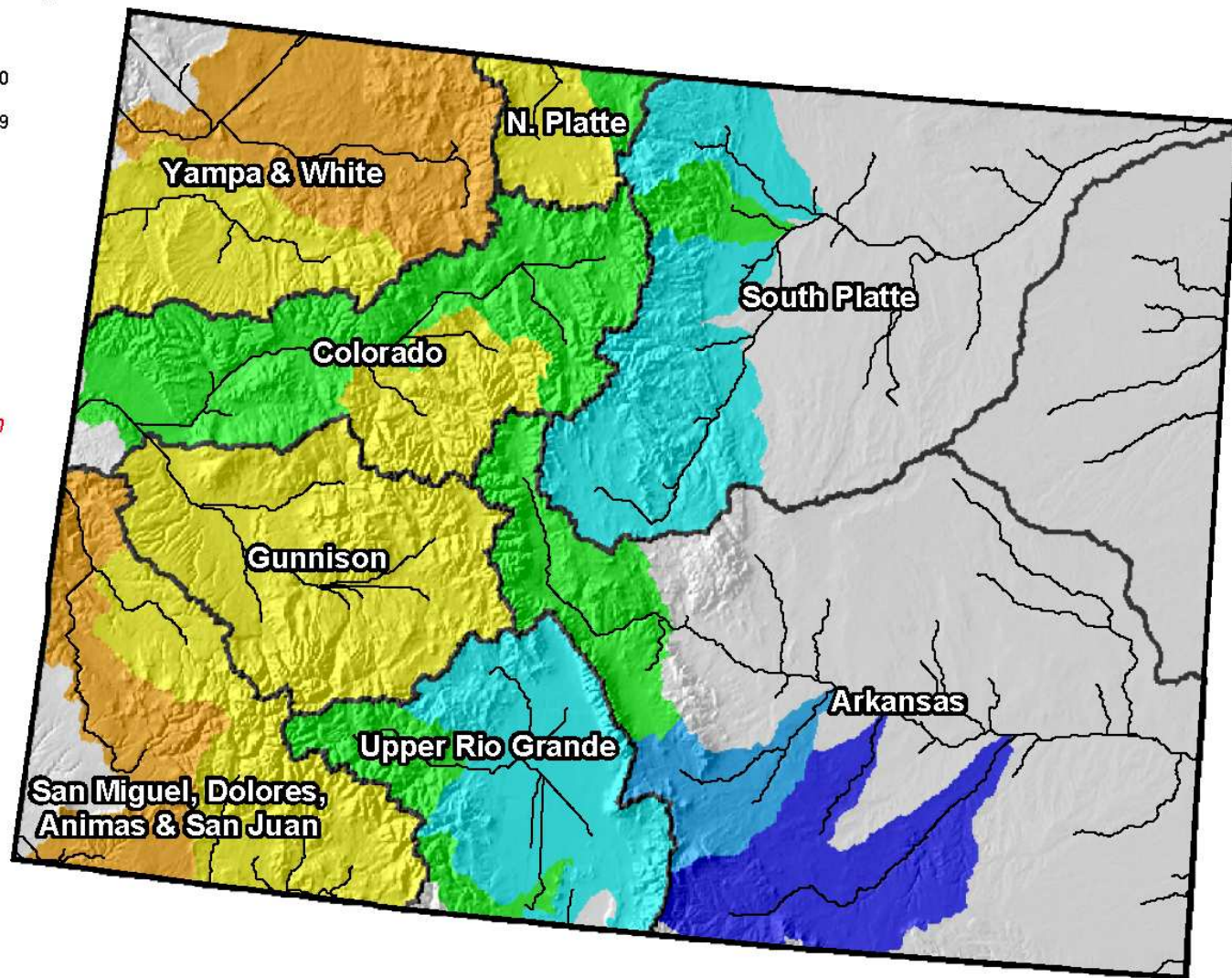
The background of the slide is a solid blue color. In the bottom right corner, there are several concentric white circles of varying sizes, resembling ripples on water. These circles are arranged in a way that suggests a point of impact, with the largest circle being the most prominent.

Colorado Snowpack Map

Percent of Average



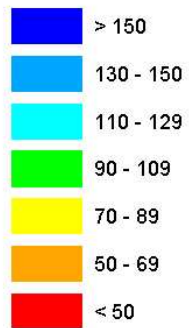
*Provisional Data
Subject to Revision*



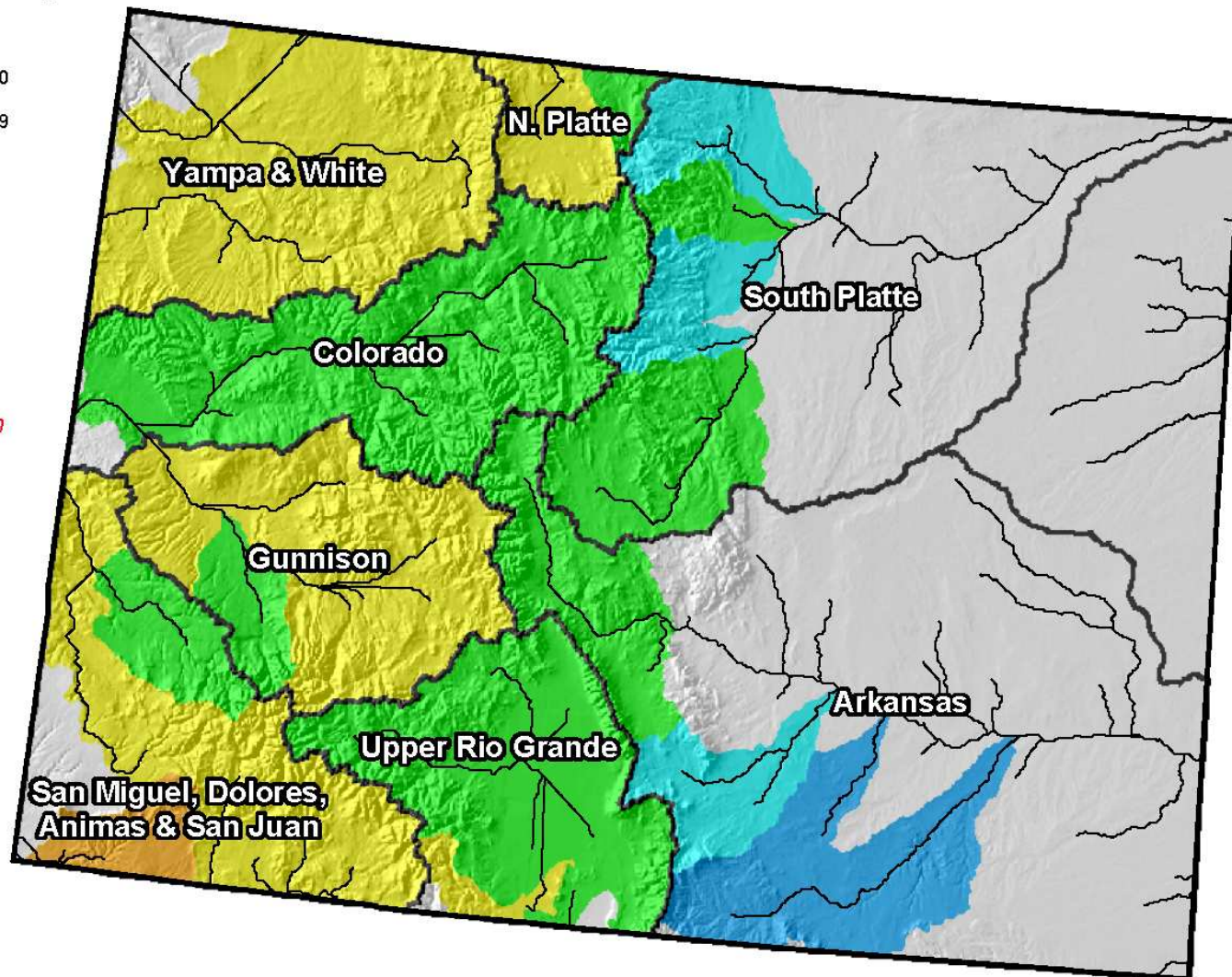
Current as of February 1, 2007

Colorado Snowpack Map

Percent of Average



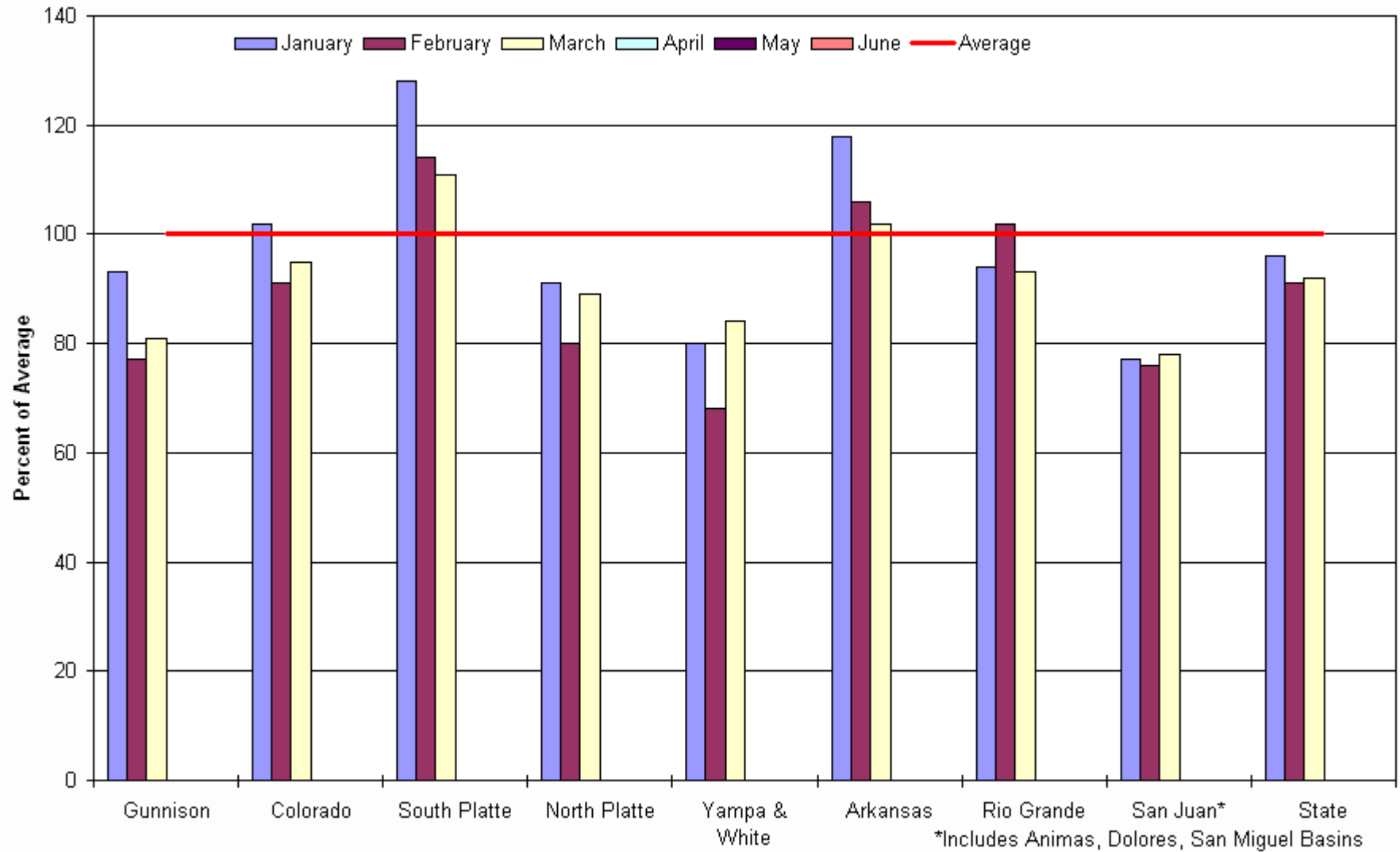
*Provisional Data
Subject to Revision*



Current as of March 1, 2007

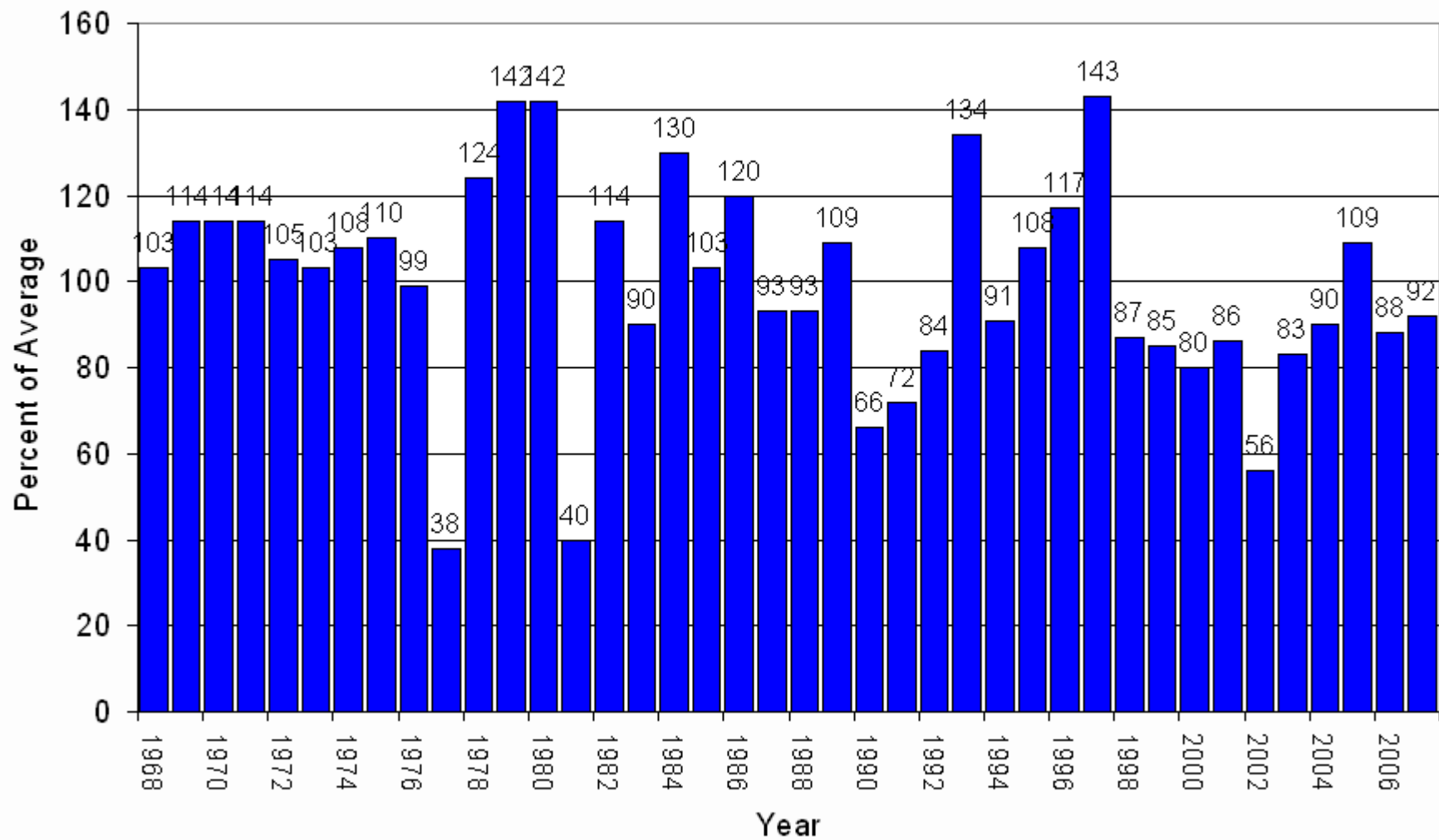
Colorado Snowpack Summary for 2007

USDA Natural Resources Conservation Service



Statewide Snowpack

March 1

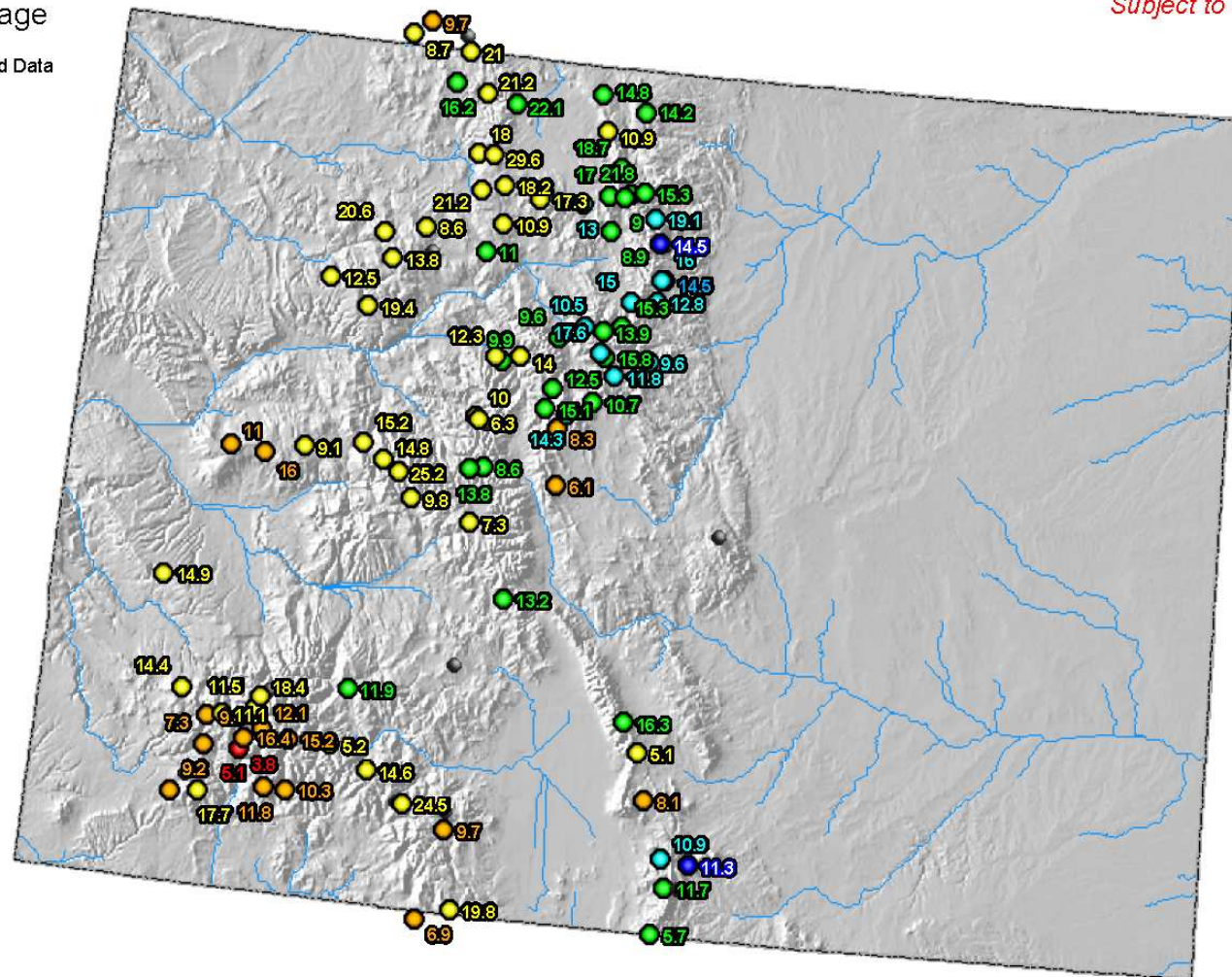


Colorado SNOTEL Snow Water Equivalent (inches)

Legend
Percent of Average

- Missing or Invalid Data
- < 50
- 50 - 69
- 70 - 89
- 90 - 109
- 110 - 129
- 130 - 149
- ≥ 150

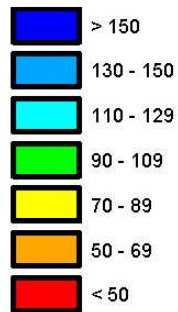
*Provisional Data
Subject to Revision*



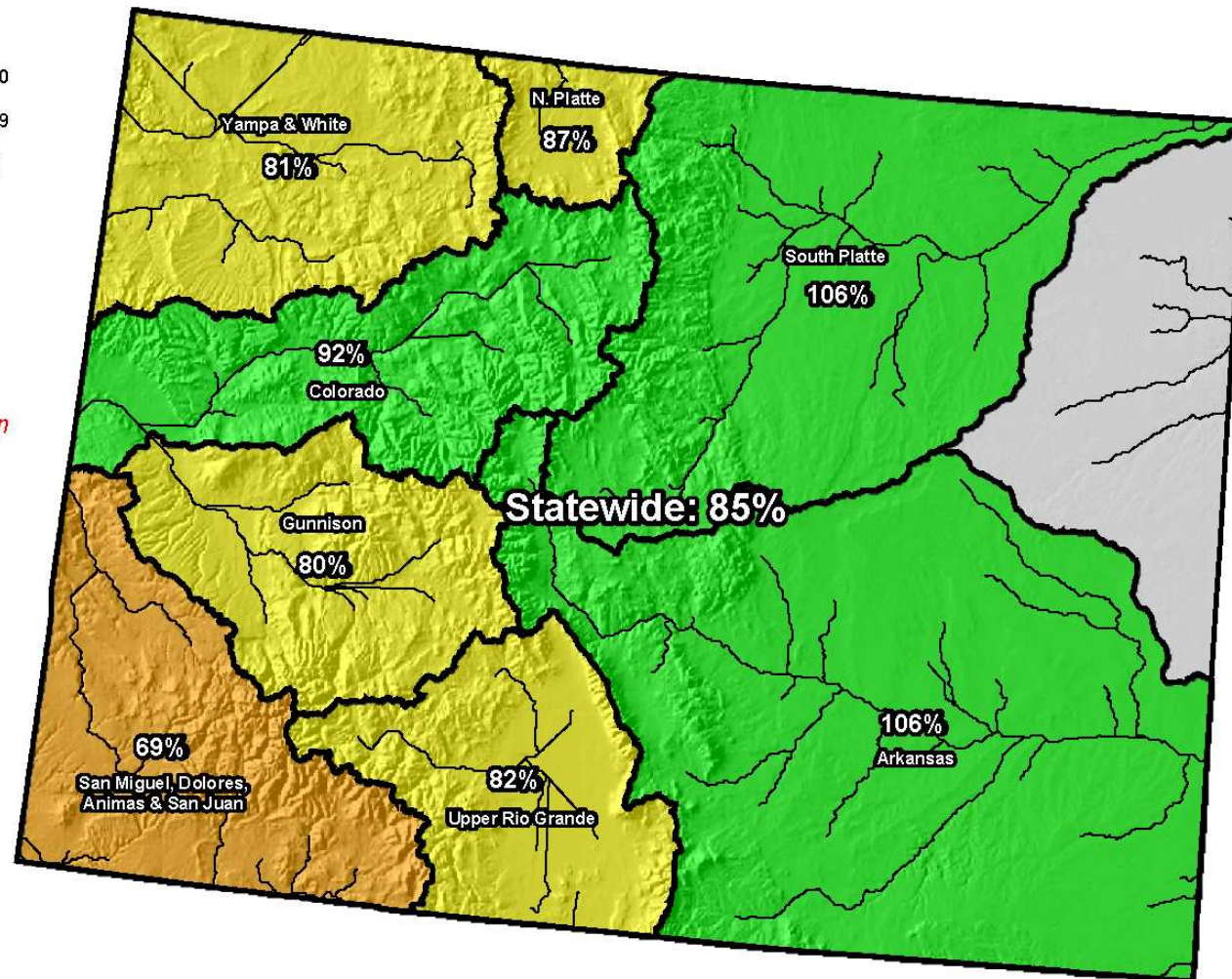
Current as of Mar 15, 2007

Colorado SNOTEL Snowpack Update Map

Percent of Average



*Provisional Data
Subject to Revision*



Current as of Mar 15, 2007

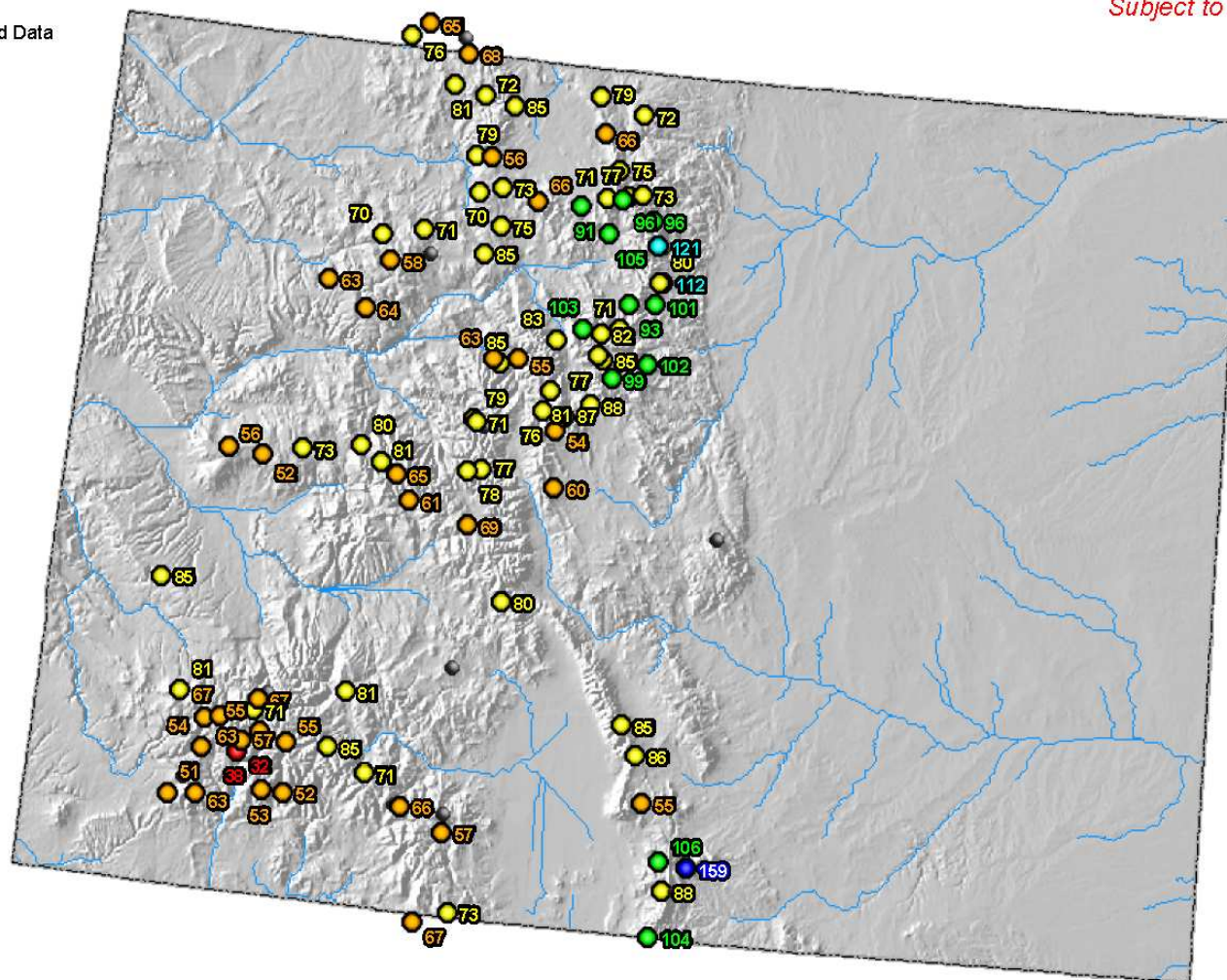
*Data may not provide a valid measure of conditions

Colorado SNOTEL Snow Water Equivalent as Percent of Average Peak SWE

Percent of Avg Peak

- Missing or Invalid Data
- < 50
- 50 - 69
- 70 - 89
- 90 - 109
- 110 - 129
- 130 - 149
- ≥ 150

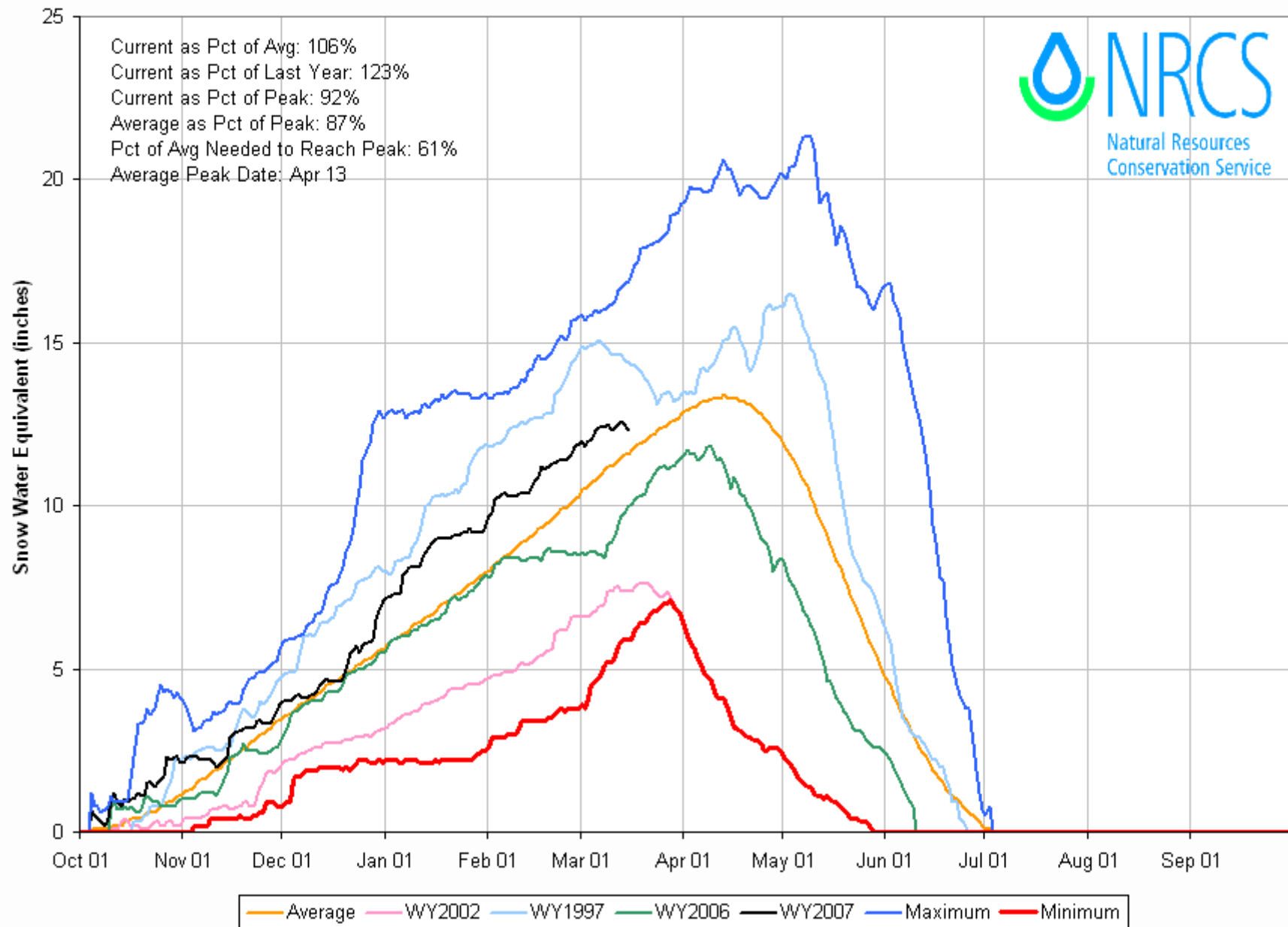
*Provisional Data
Subject to Revision*



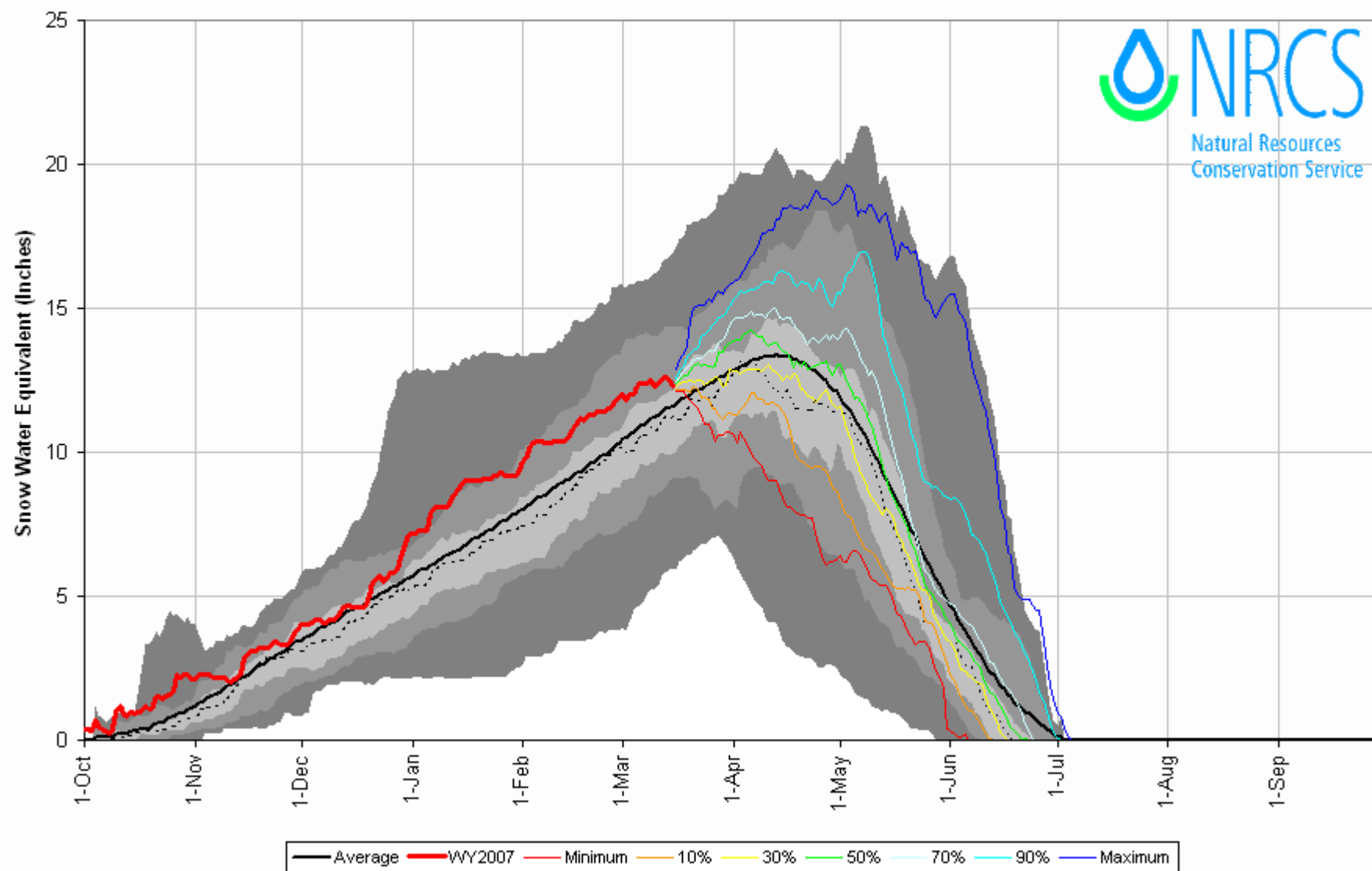
Current as of Mar 15, 2007

Arkansas River Basin High/Low Snowpack Summary

Based on Provisional SNOTEL data as of Mar 15, 2007

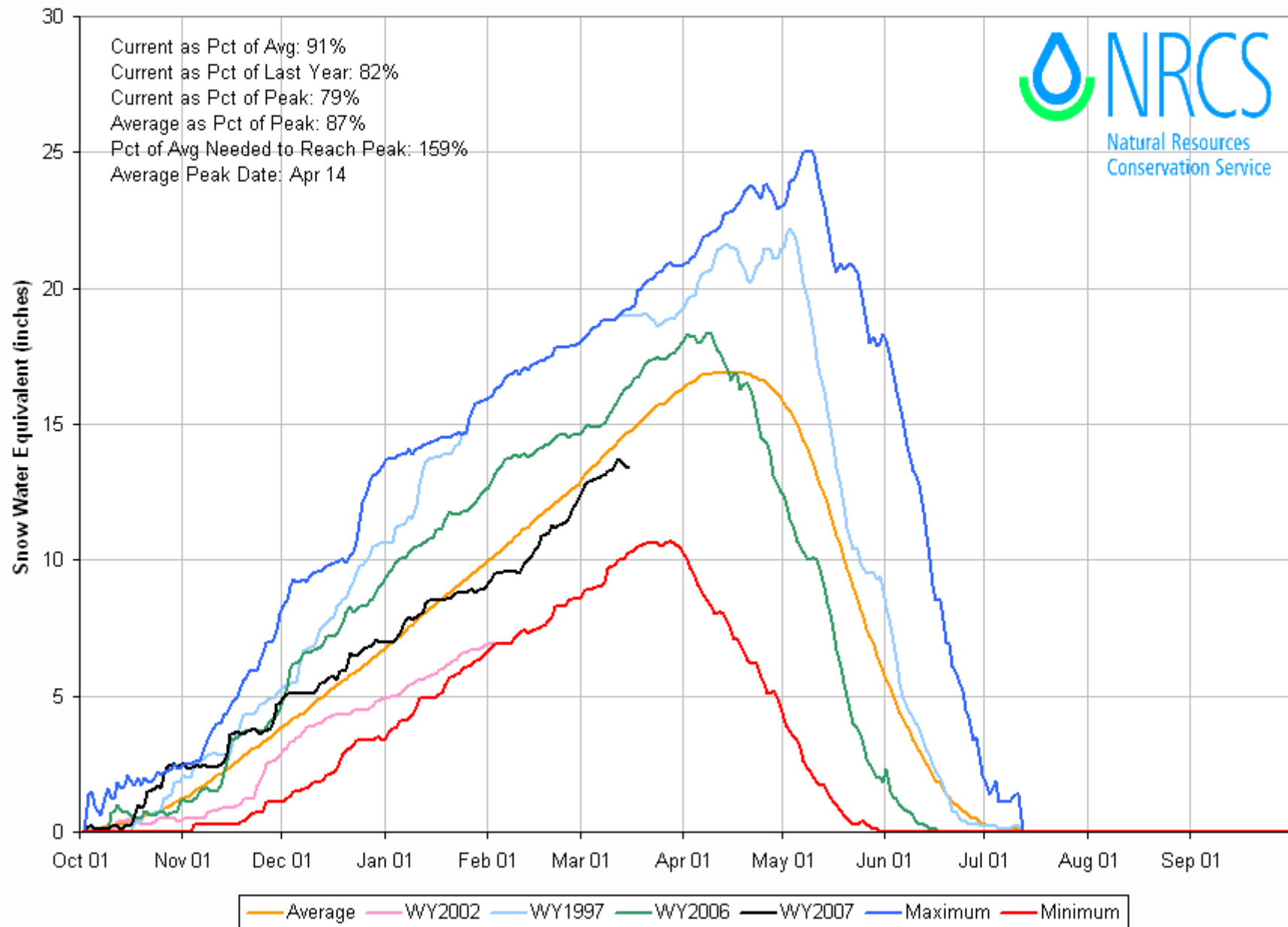


Based on Provisional SNOTEL Data as of Mar 15, 2007

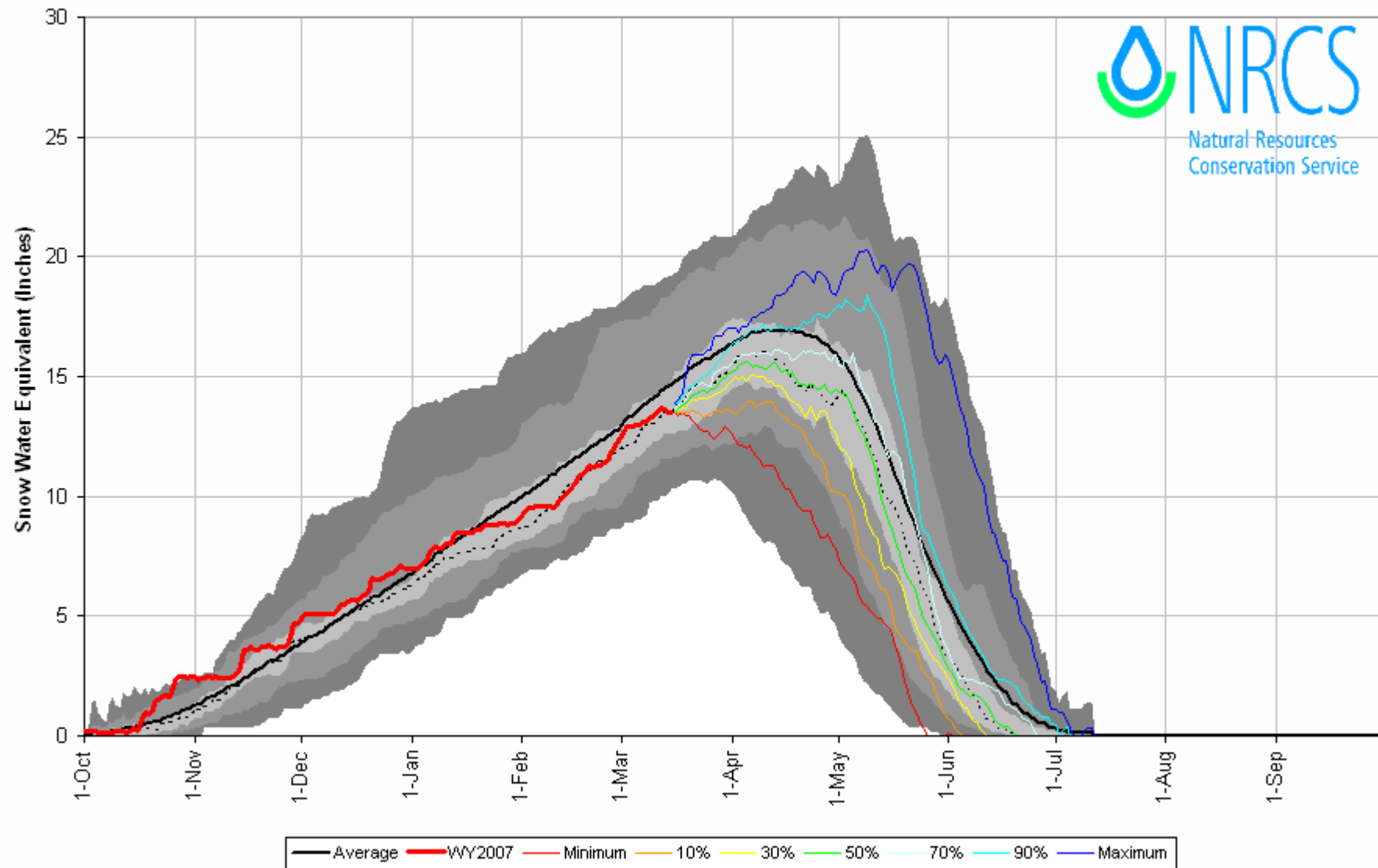


Upper Colorado River Basin High/Low Snowpack Summary

Based on Provisional SNOTEL data as of Mar 15, 2007

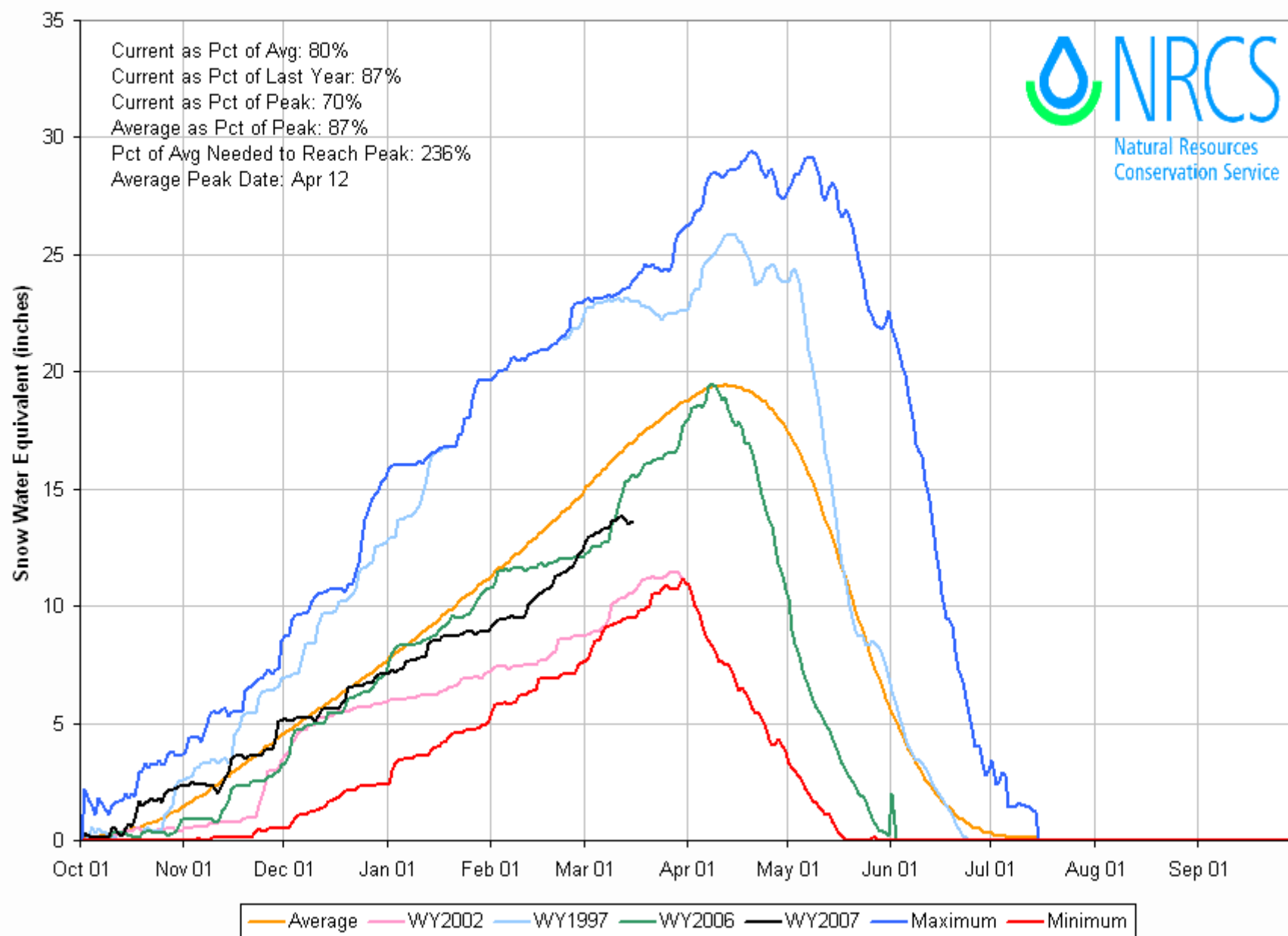


Based on Provisional SNOTEL Data as of Mar 15, 2007



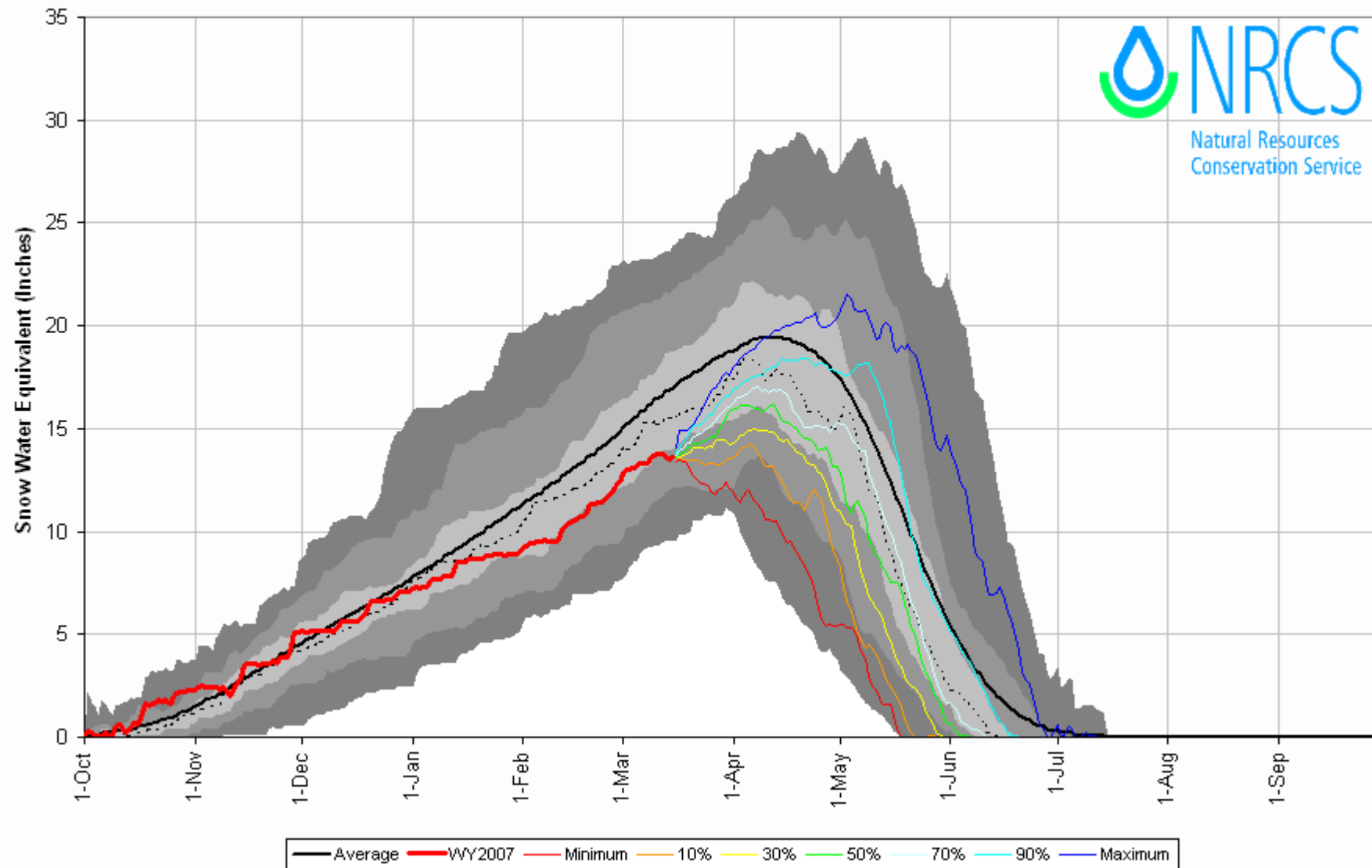
Gunnison River Basin High/Low Snowpack Summary

Based on Provisional SNOTEL data as of Mar 15, 2007



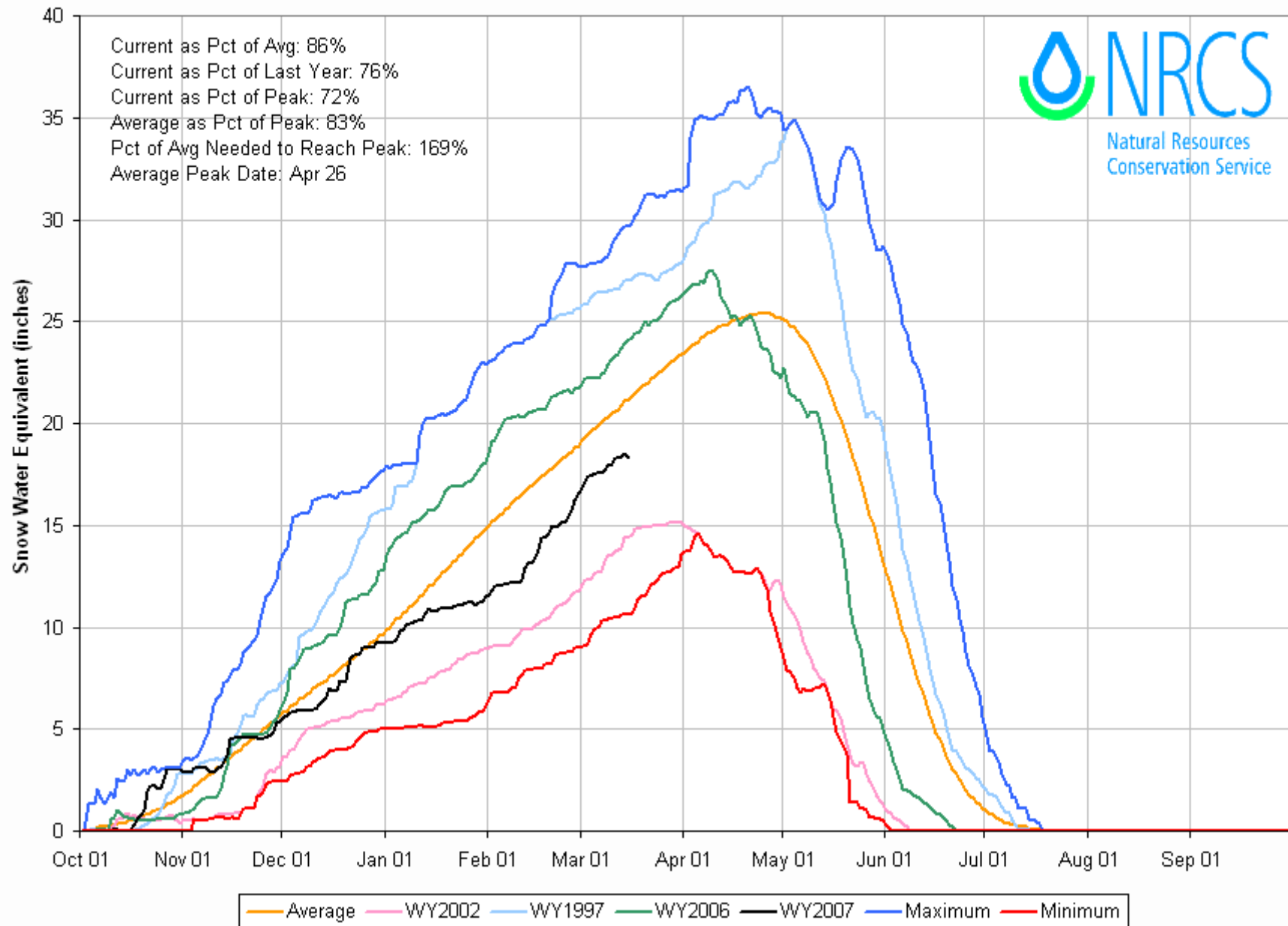
Gunnison River Basin with Non-Exceedence Projections

Based on Provisional SNOTEL Data as of Mar 15, 2007



Laramie and North Platte River Basins High/Low Snowpack Summary

Based on Provisional SNOTEL data as of Mar 15, 2007

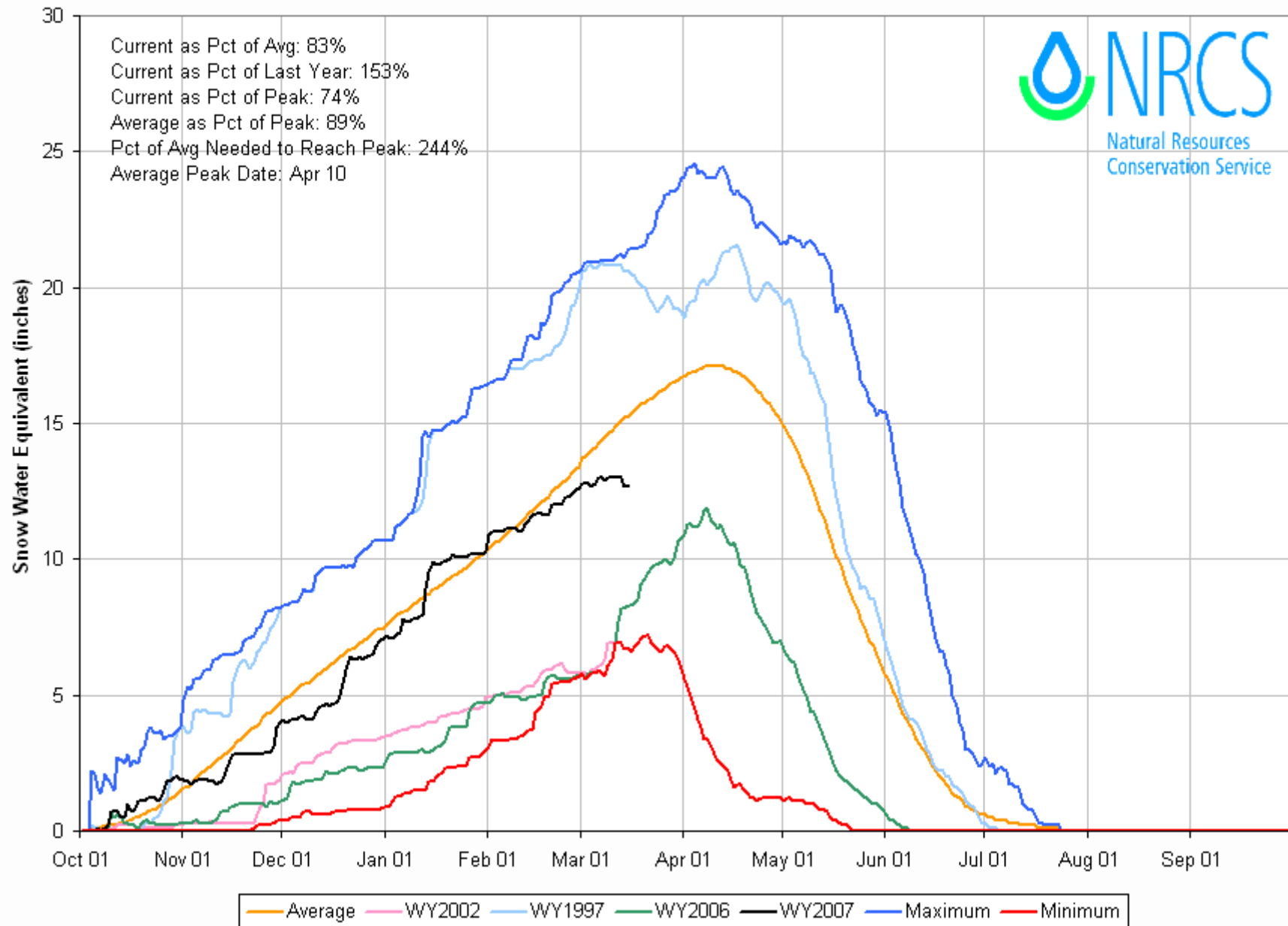


Based on Provisional SNOTEL Data as of Mar 15, 2007

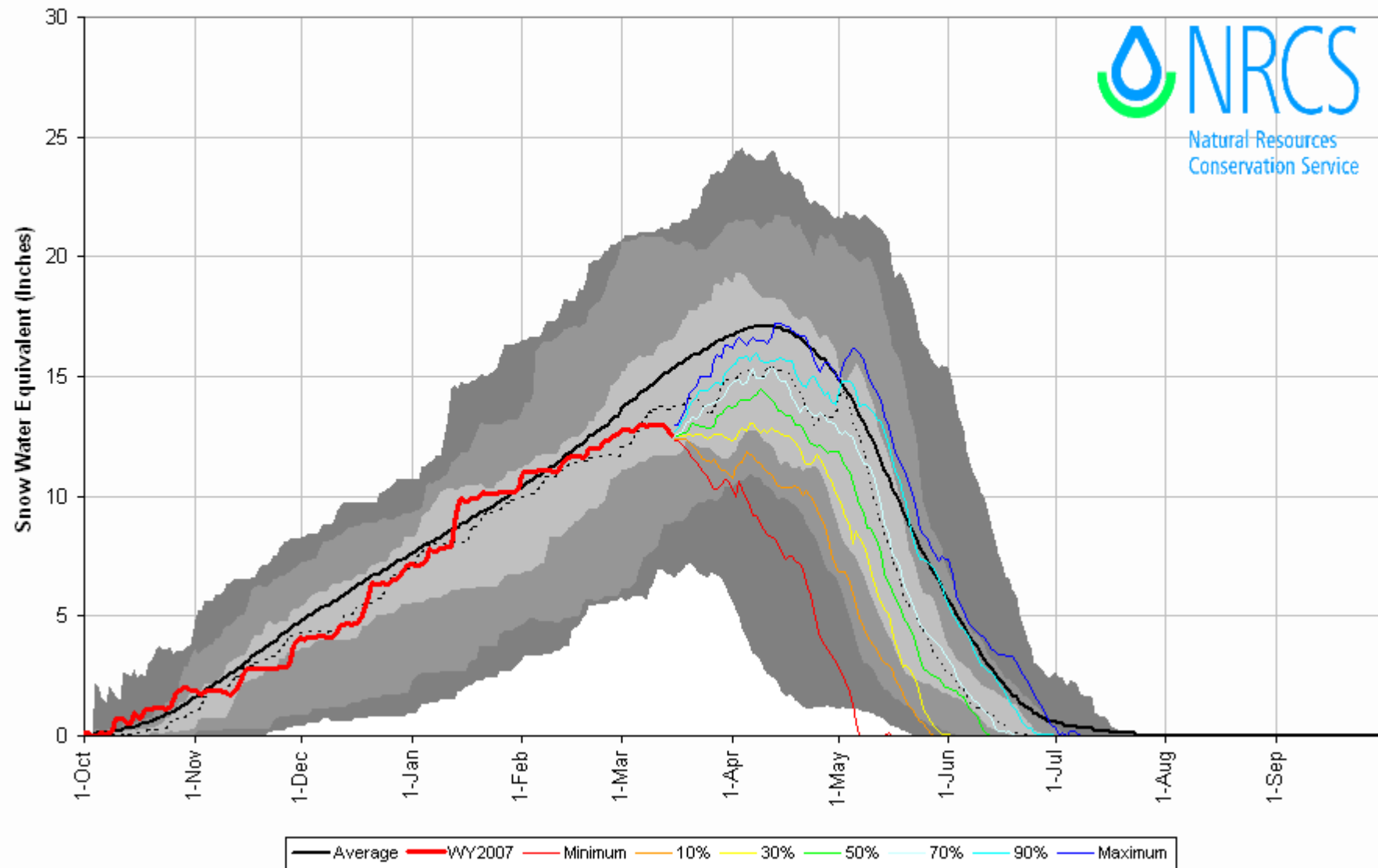


Upper Rio Grande Basin High/Low Snowpack Summary

Based on Provisional SNOTEL data as of Mar 15, 2007

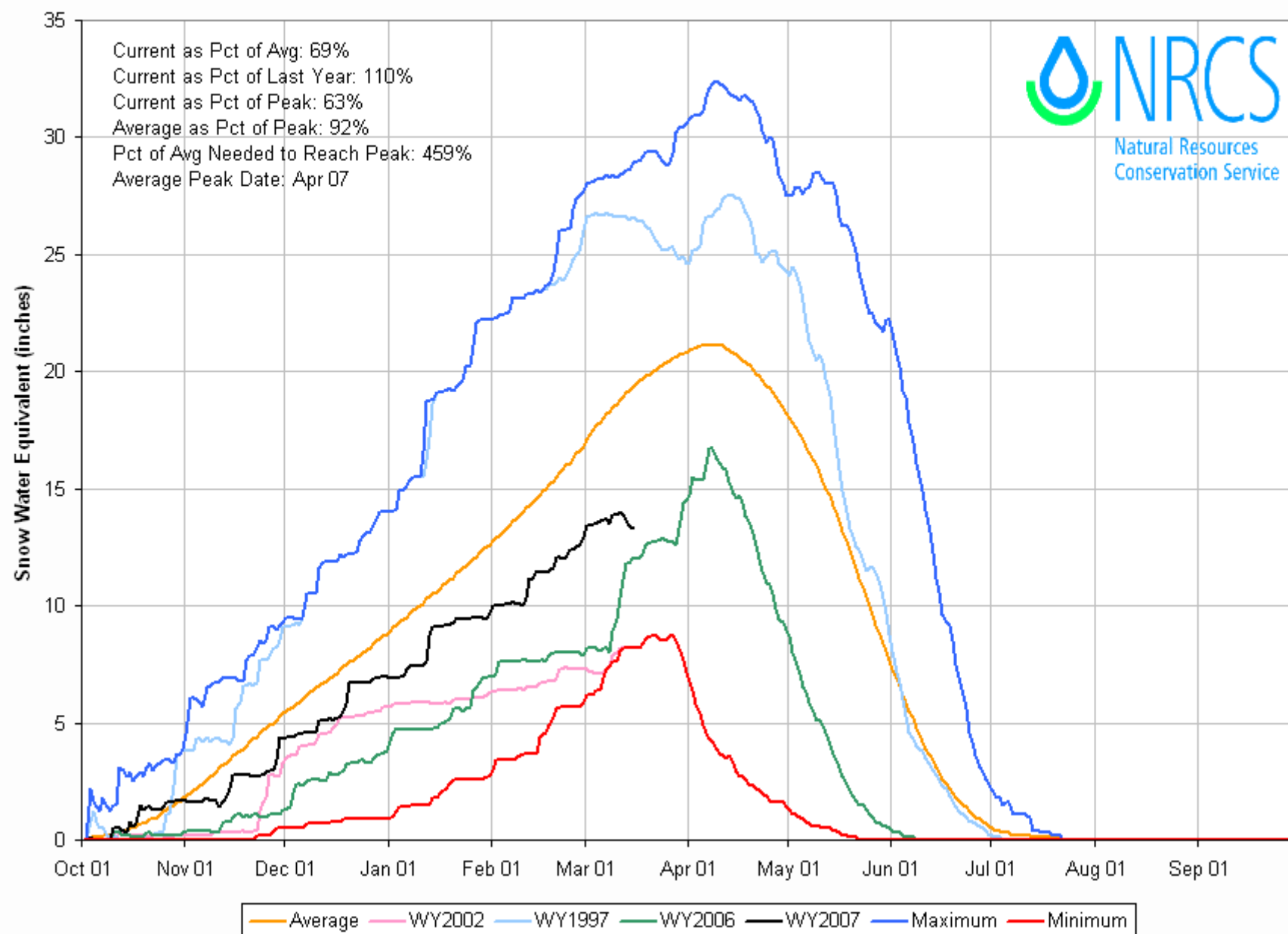


Based on Provisional SNOTEL Data as of Mar 15, 2007



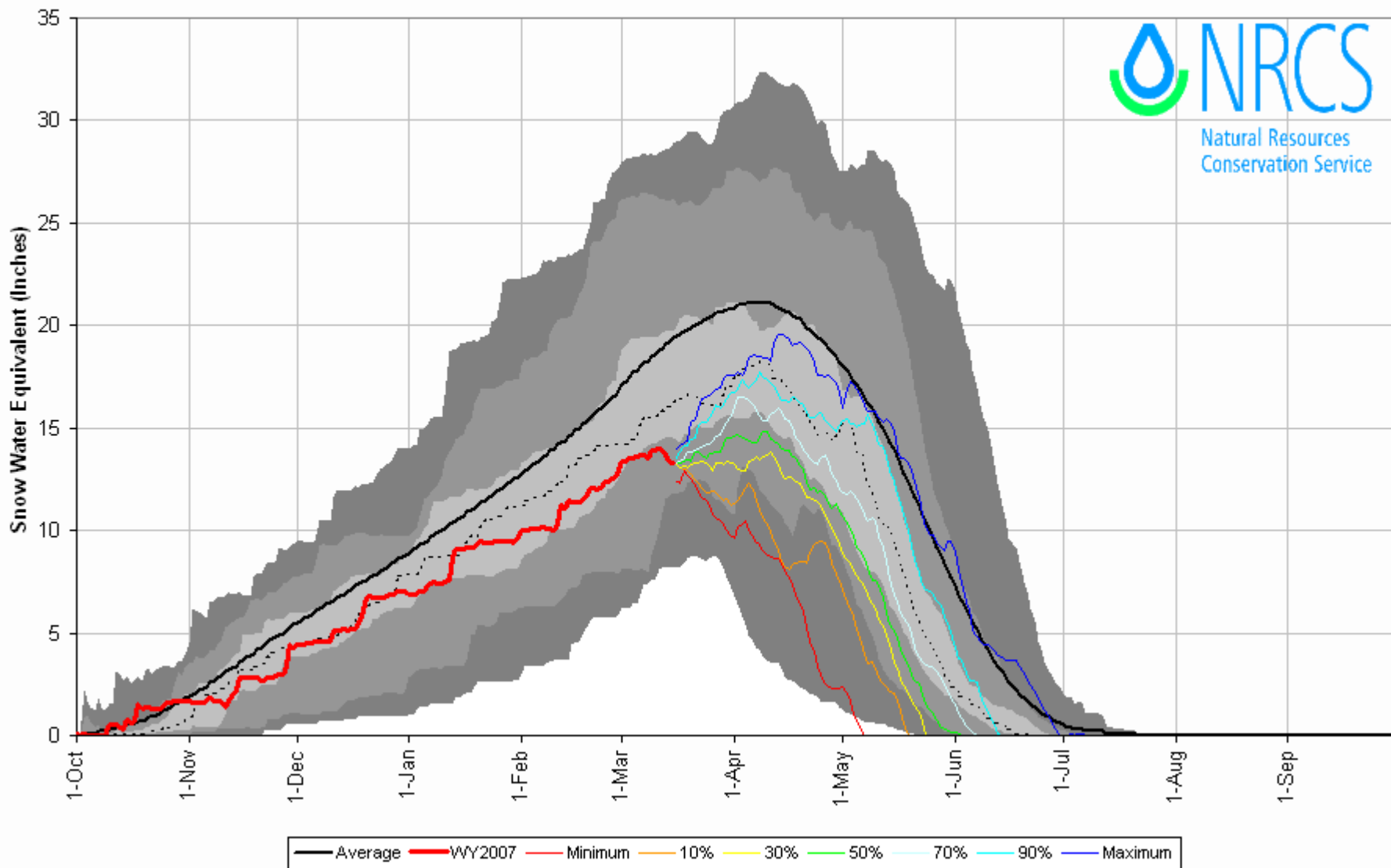
San Miguel, Dolores, Animas & San Juan River Basins High/Low Snowpack Summary

Based on Provisional SNOTEL data as of Mar 15, 2007



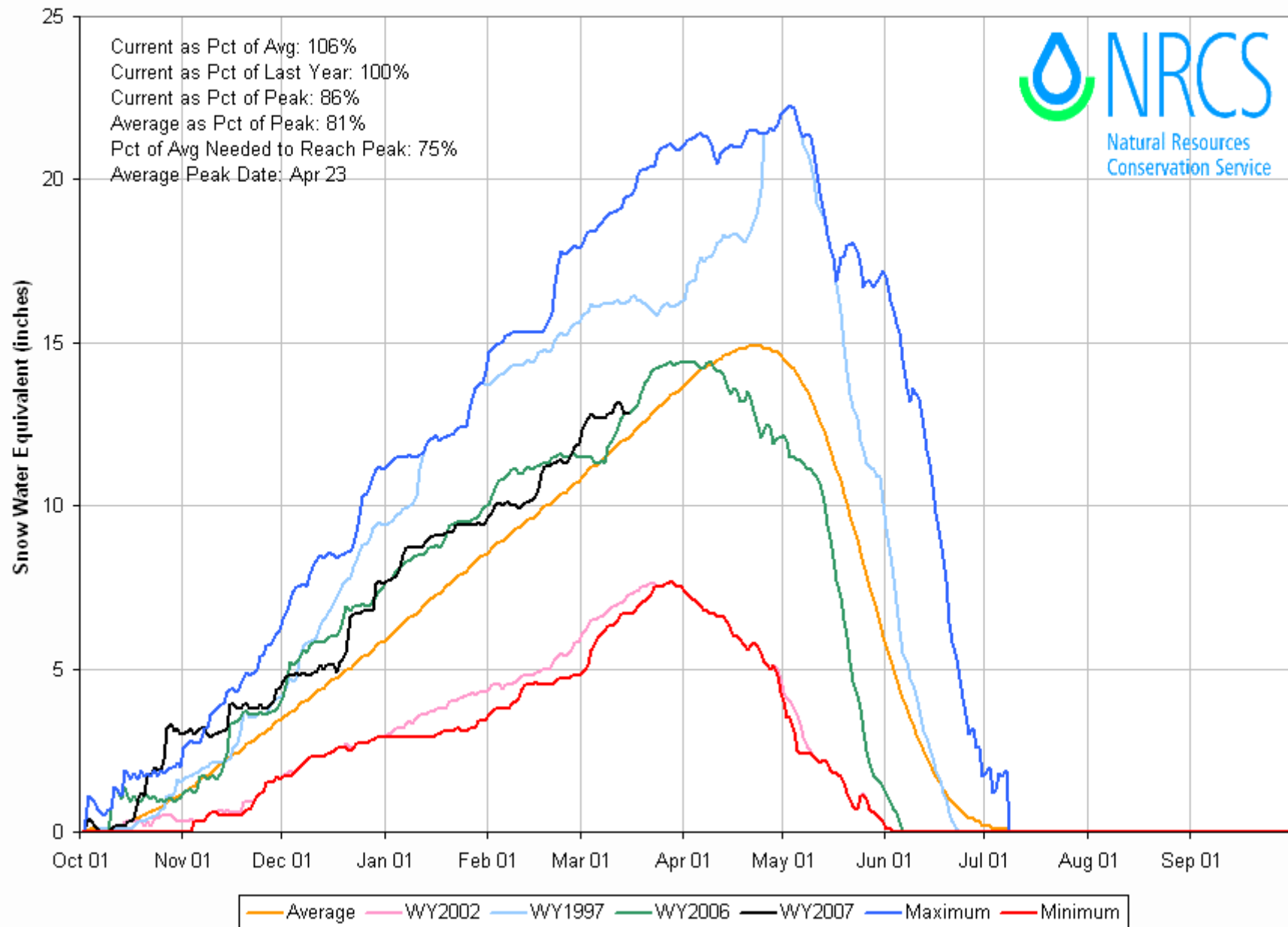
San Miguel, Dolores, Animas & San Juan River Basins with Non-Exceedence Projections

Based on Provisional SNOTEL Data as of Mar 15, 2007

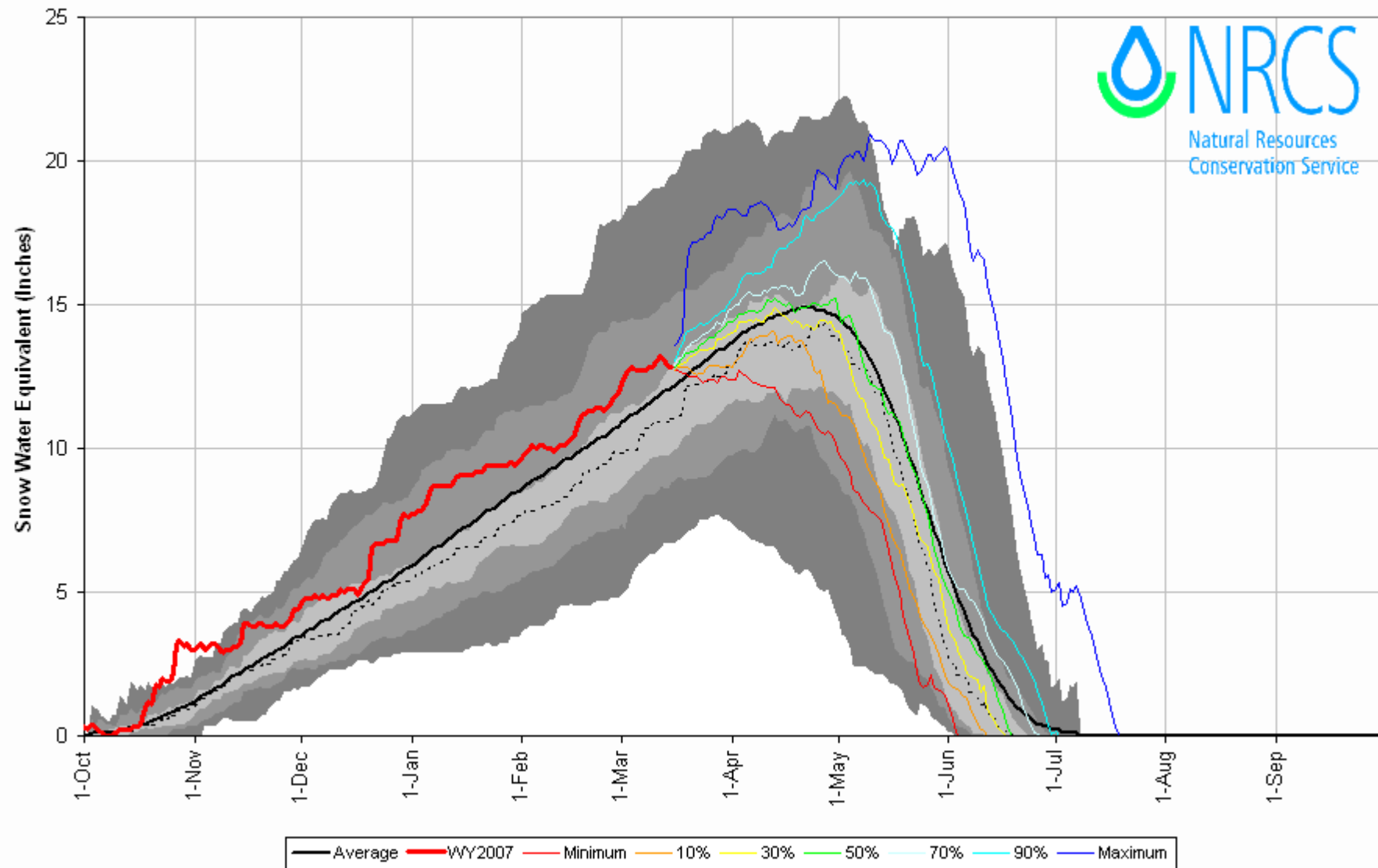


South Platte River Basin High/Low Snowpack Summary

Based on Provisional SNOTEL data as of Mar 15, 2007

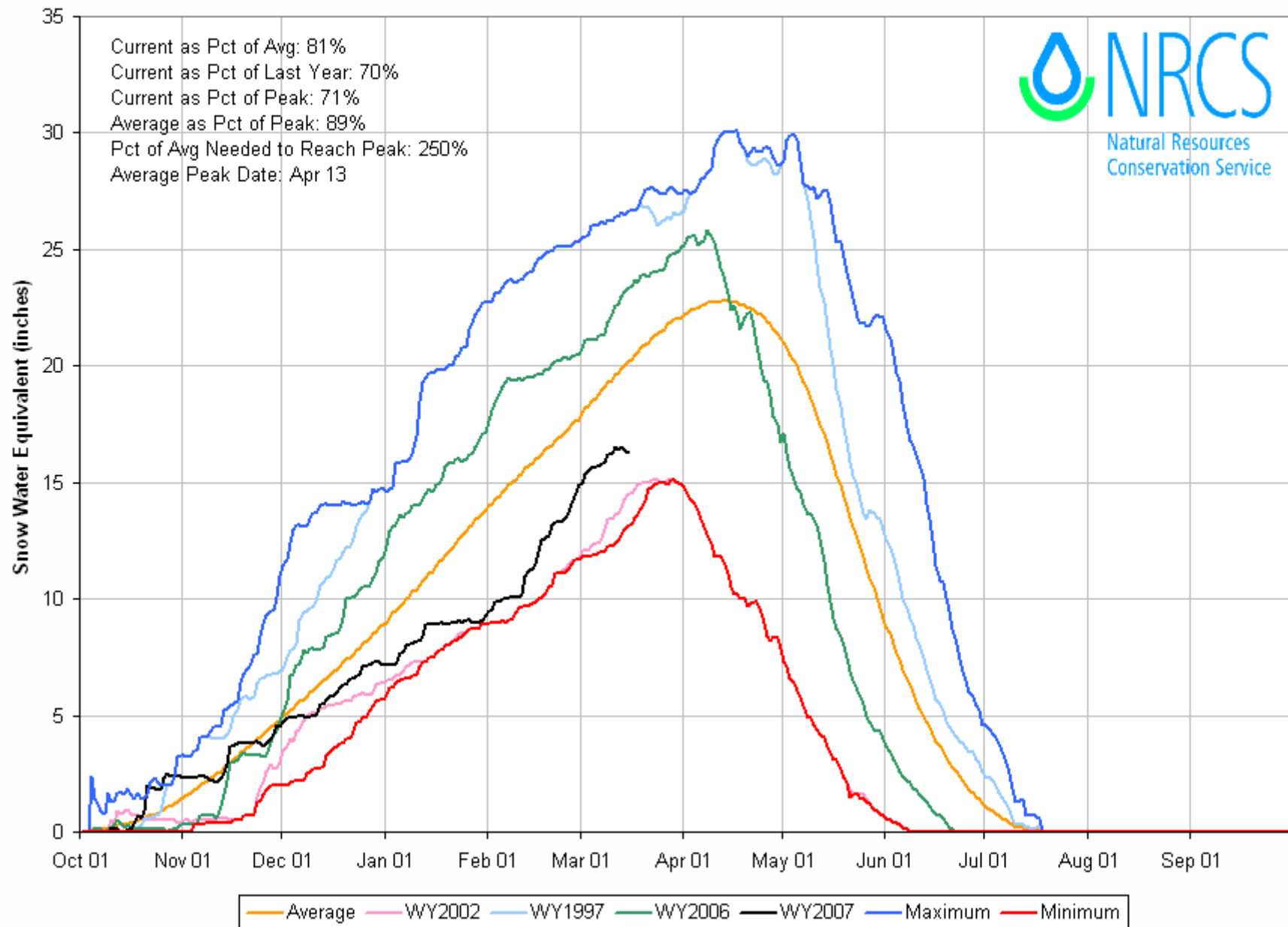


Based on Provisional SNOTEL Data as of Mar 15, 2007

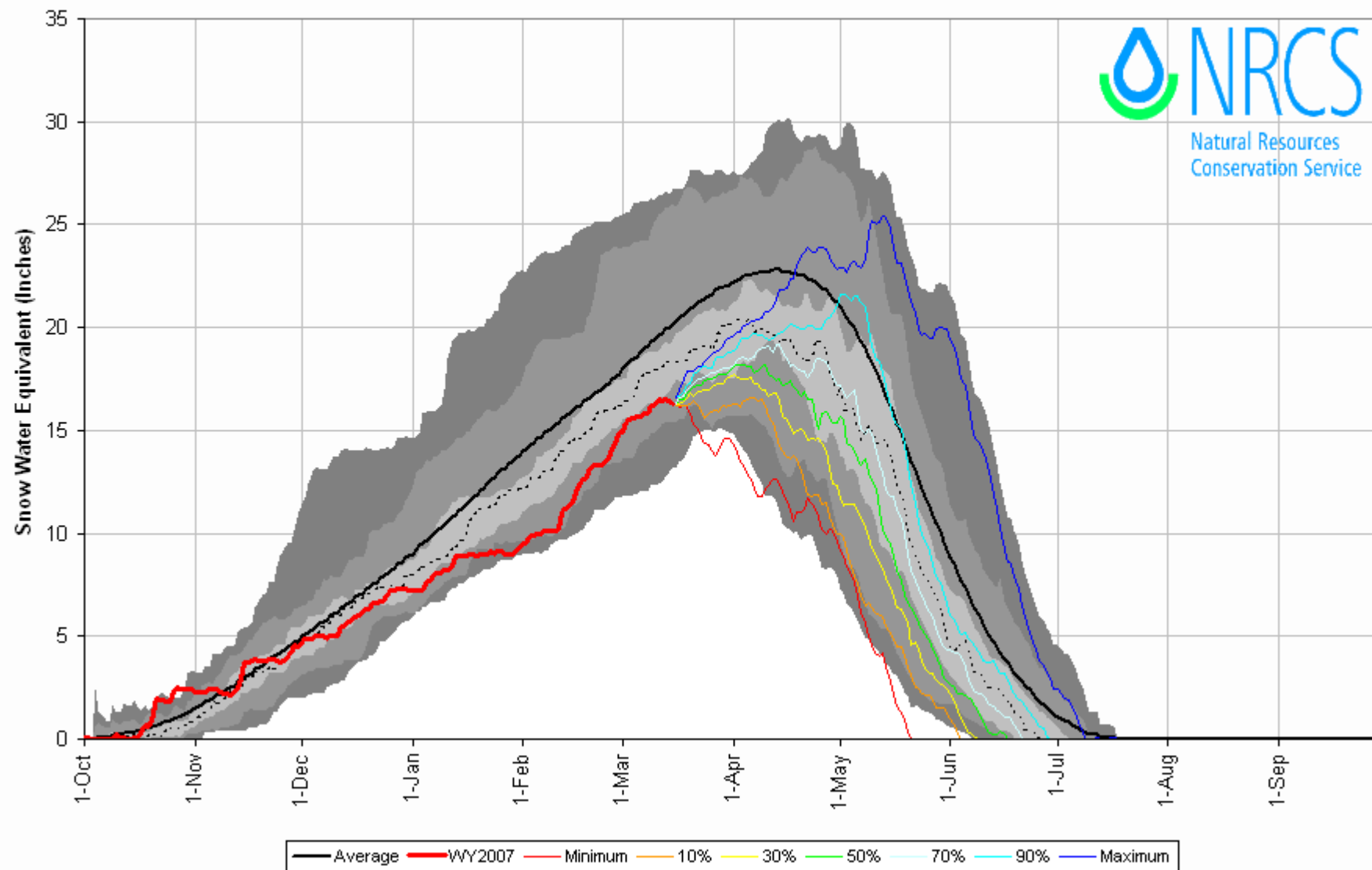


Yampa and White River Basins High/Low Snowpack Summary

Based on Provisional SNOTEL data as of Mar 15, 2007

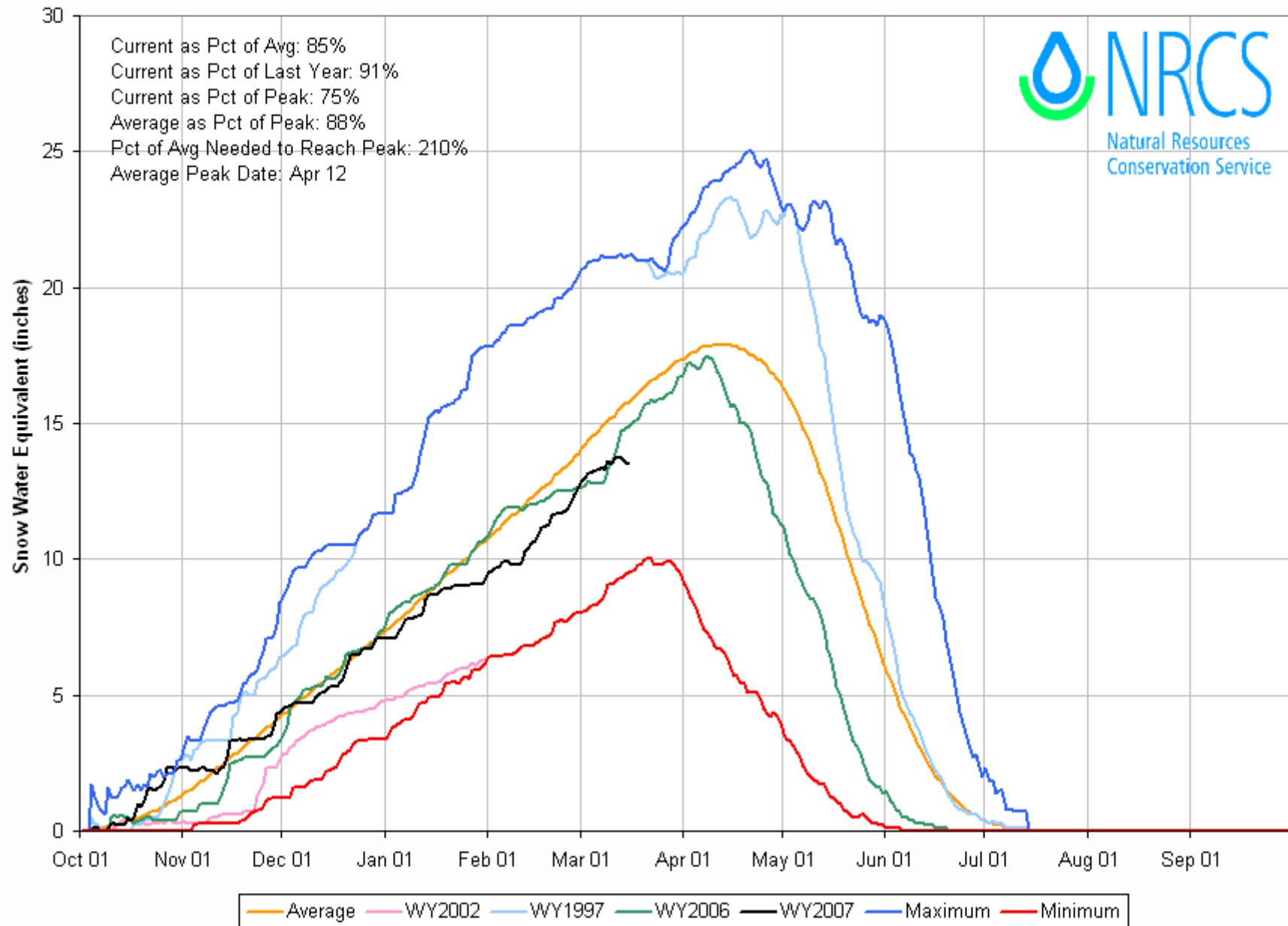


Based on Provisional SNOTEL Data as of Mar 15, 2007



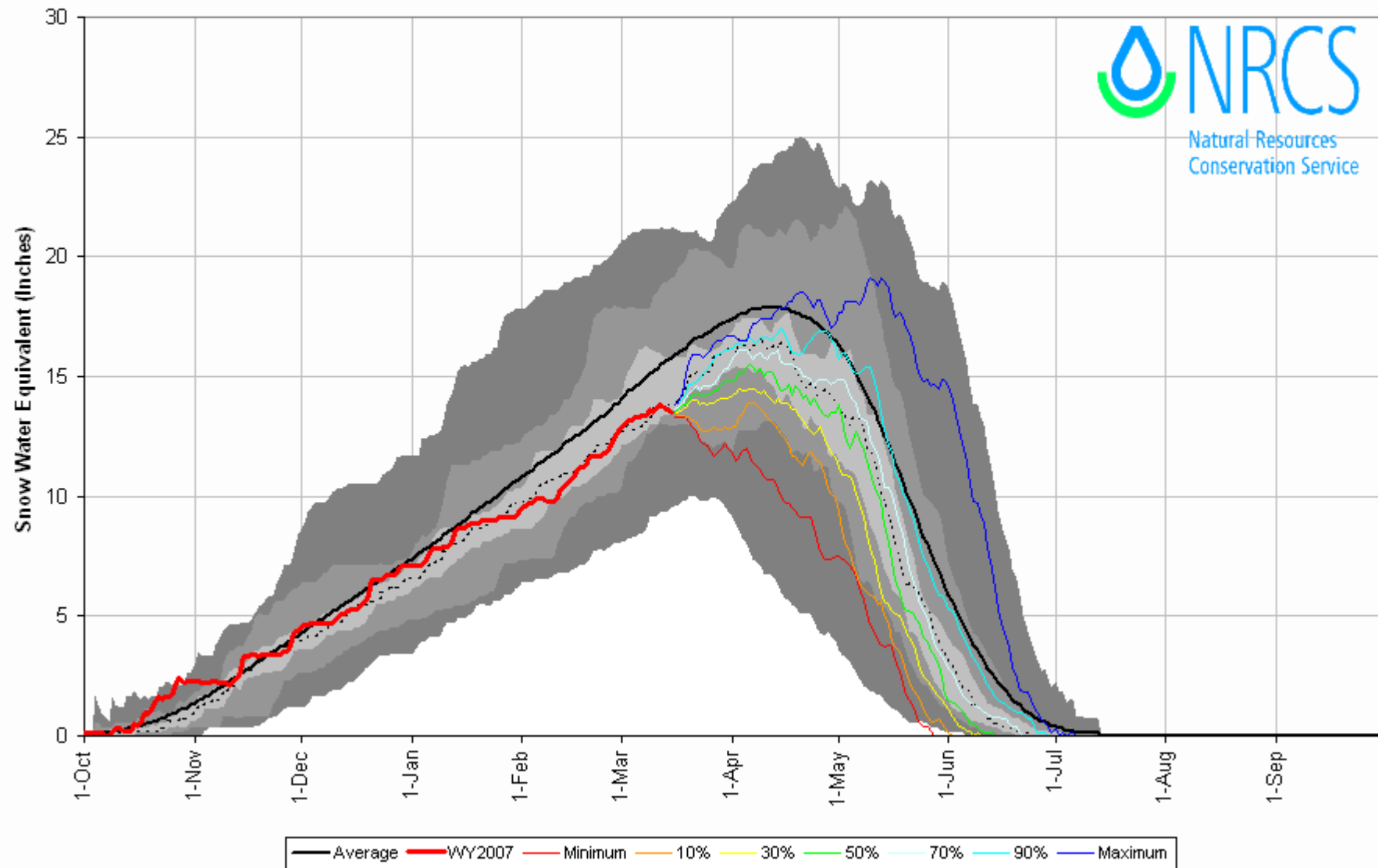
Colorado Statewide High/Low Snowpack Summary

Based on Provisional SNOTEL data as of Mar 15, 2007



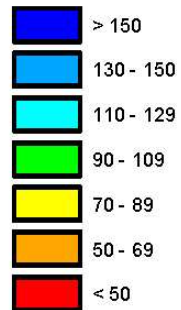
Colorado State-Wide with Non-Exceedence Projections

Based on Provisional SNOTEL Data as of Mar 15, 2007

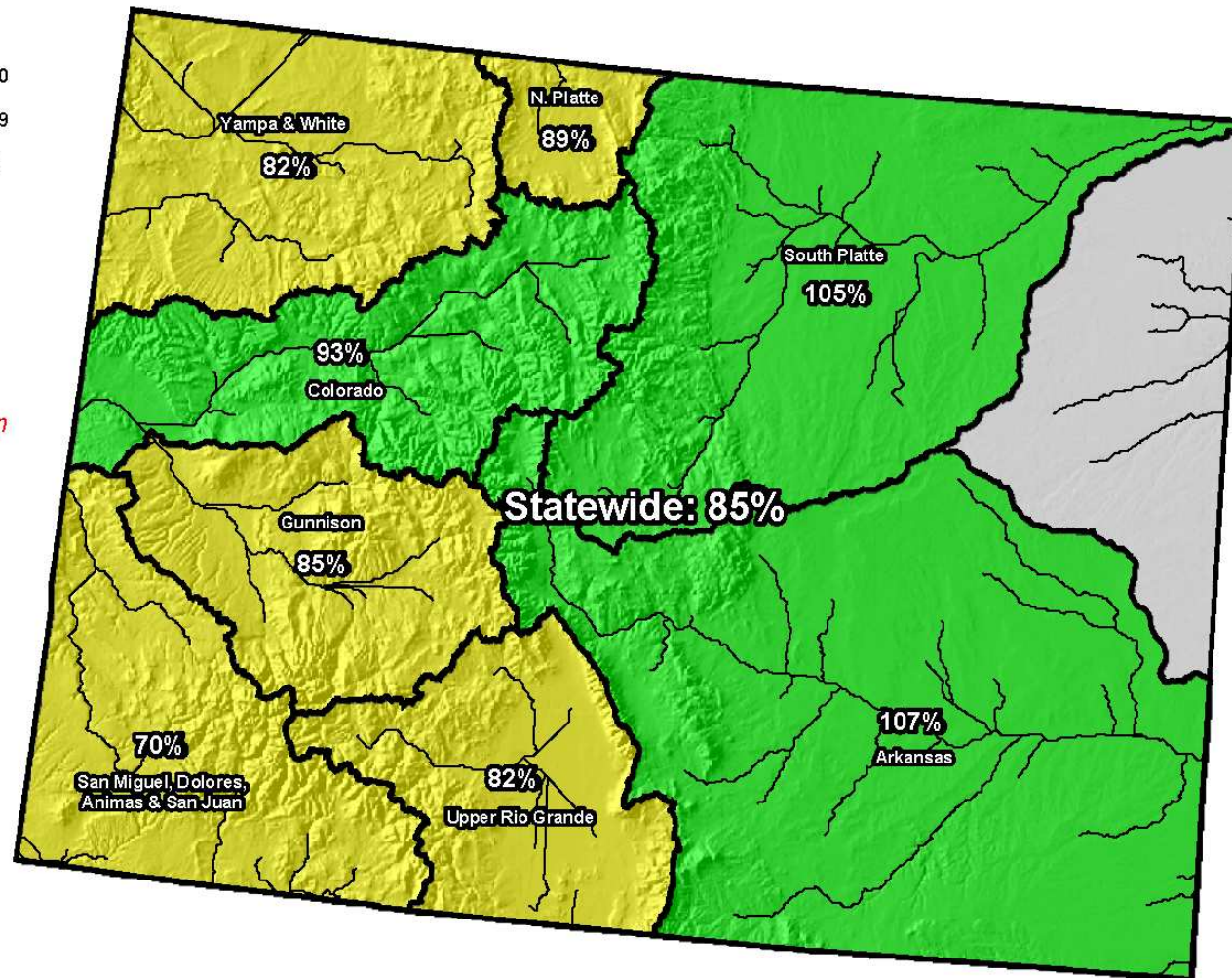


Colorado SNOTEL April 1 Snowpack Projection Map*

Percent of Average



*Provisional Data
Subject to Revision*



Current as of Mar 15, 2007

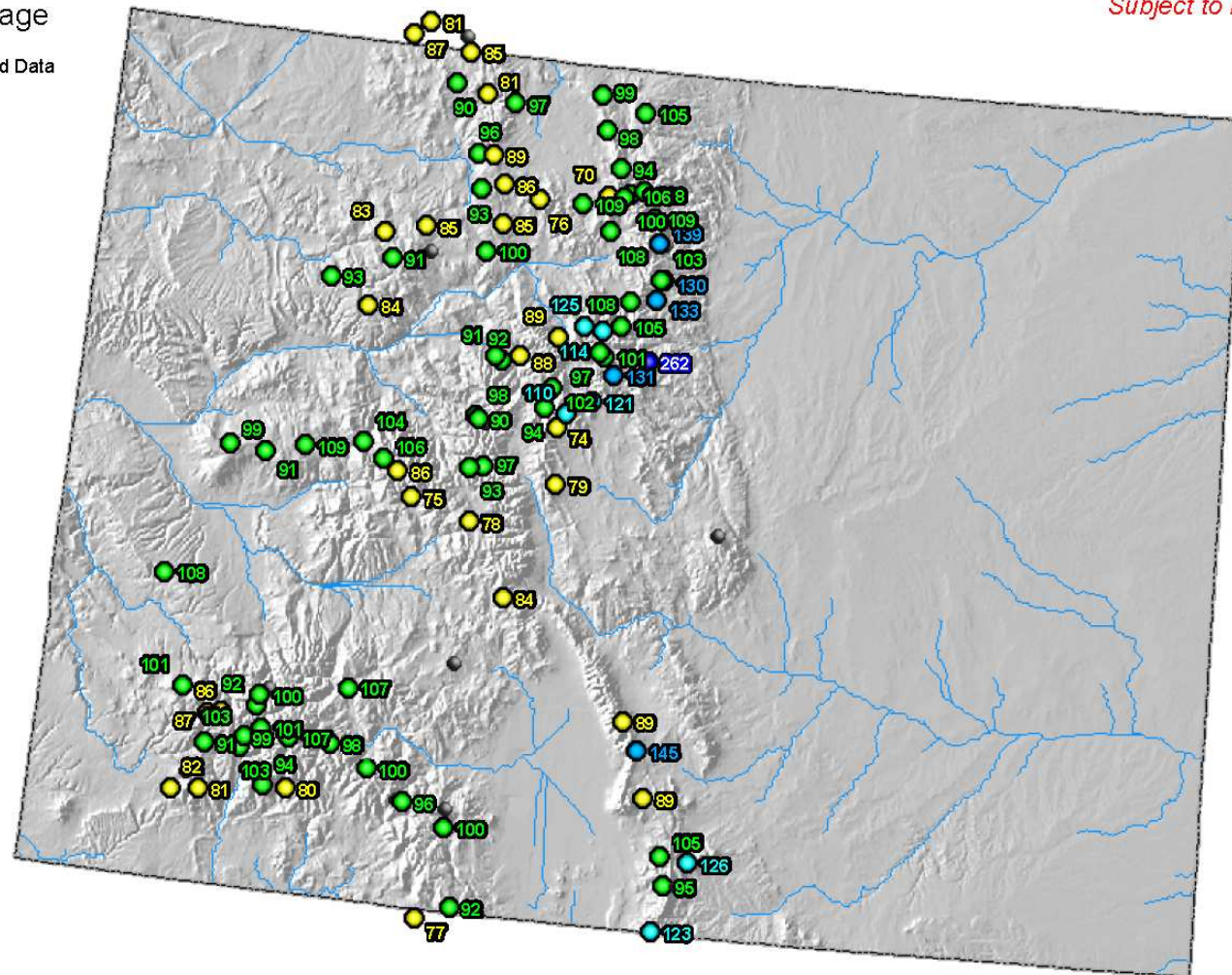
*Based on 50% Non-Exceedence Projections

Colorado SNOTEL Year-to-Date Precipitation

Legend
Percent of Average

- Missing or Invalid Data
- < 50
- 50 - 69
- 70 - 89
- 90 - 109
- 110 - 129
- 130 - 149
- ≥ 150

*Provisional Data
Subject to Revision*



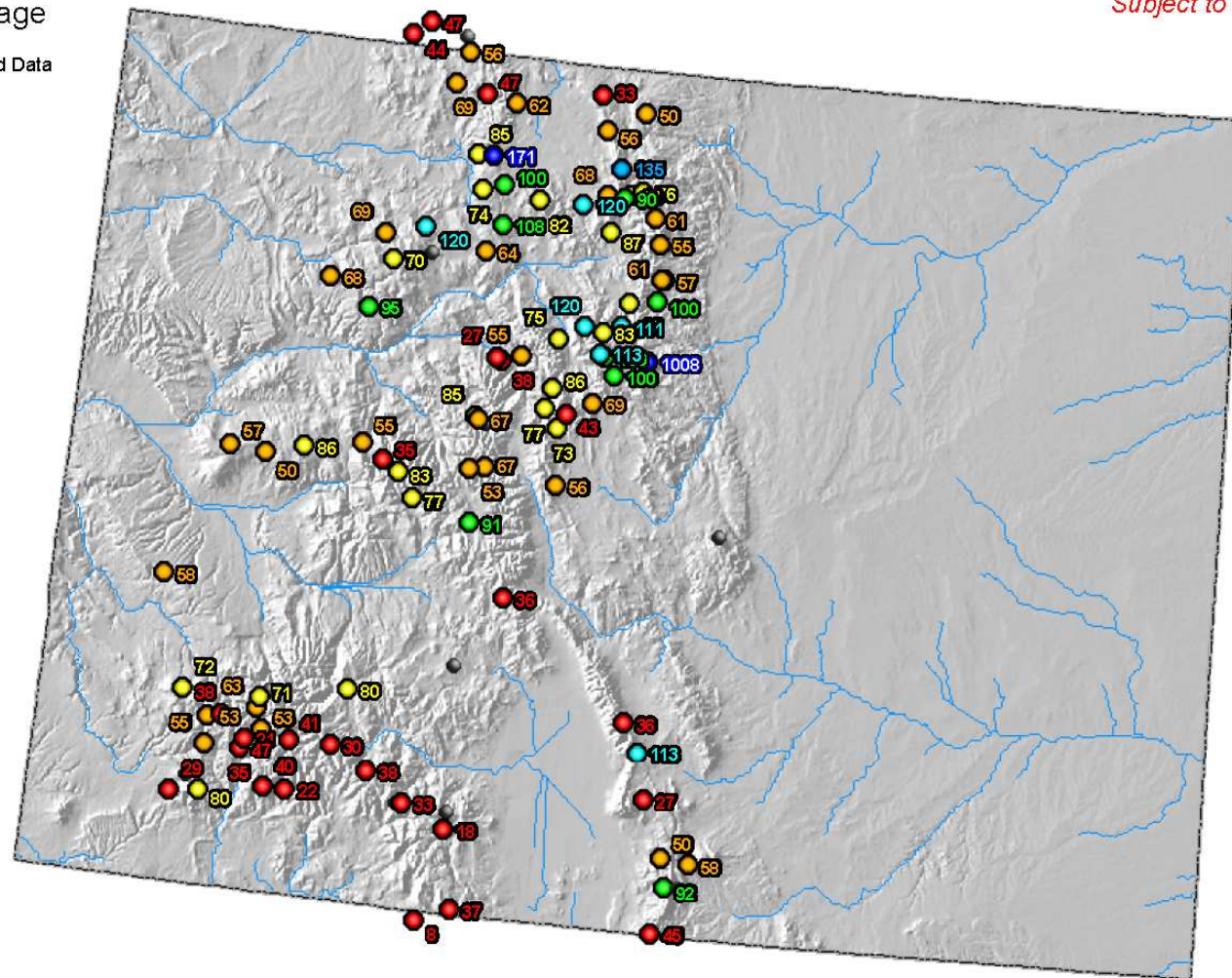
Current as of Mar 15, 2007

Colorado SNOTEL Month-to-Date Precipitation

Legend
Percent of Average

- Missing or Invalid Data
- < 50
- 50 - 69
- 70 - 89
- 90 - 109
- 110 - 129
- 130 - 149
- ≥ 150

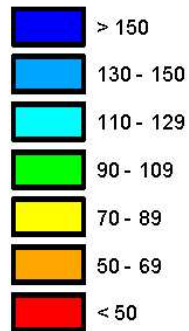
*Provisional Data
Subject to Revision*



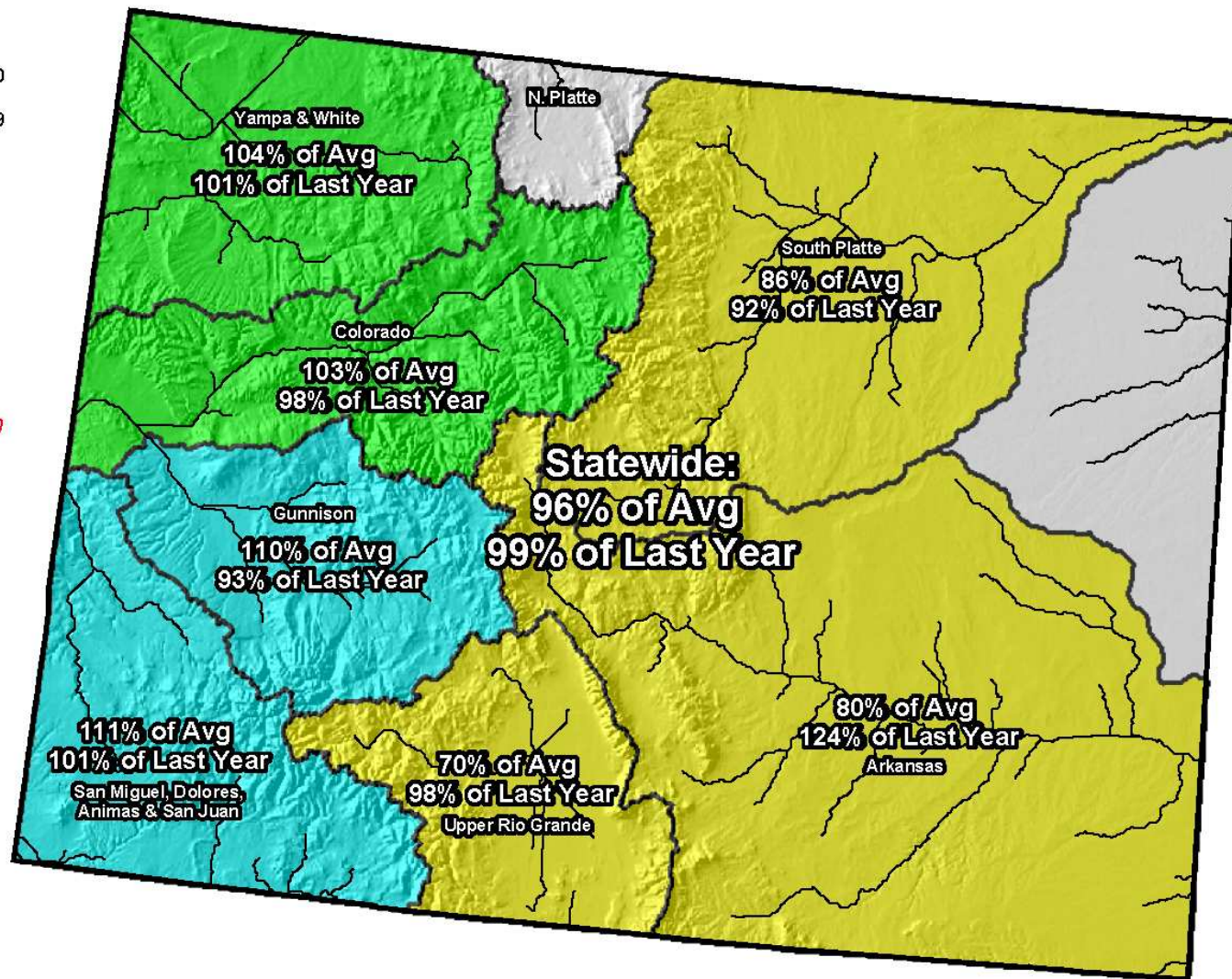
Current as of Mar 15, 2007

Colorado Reservoir Storage Map

Percent of Average

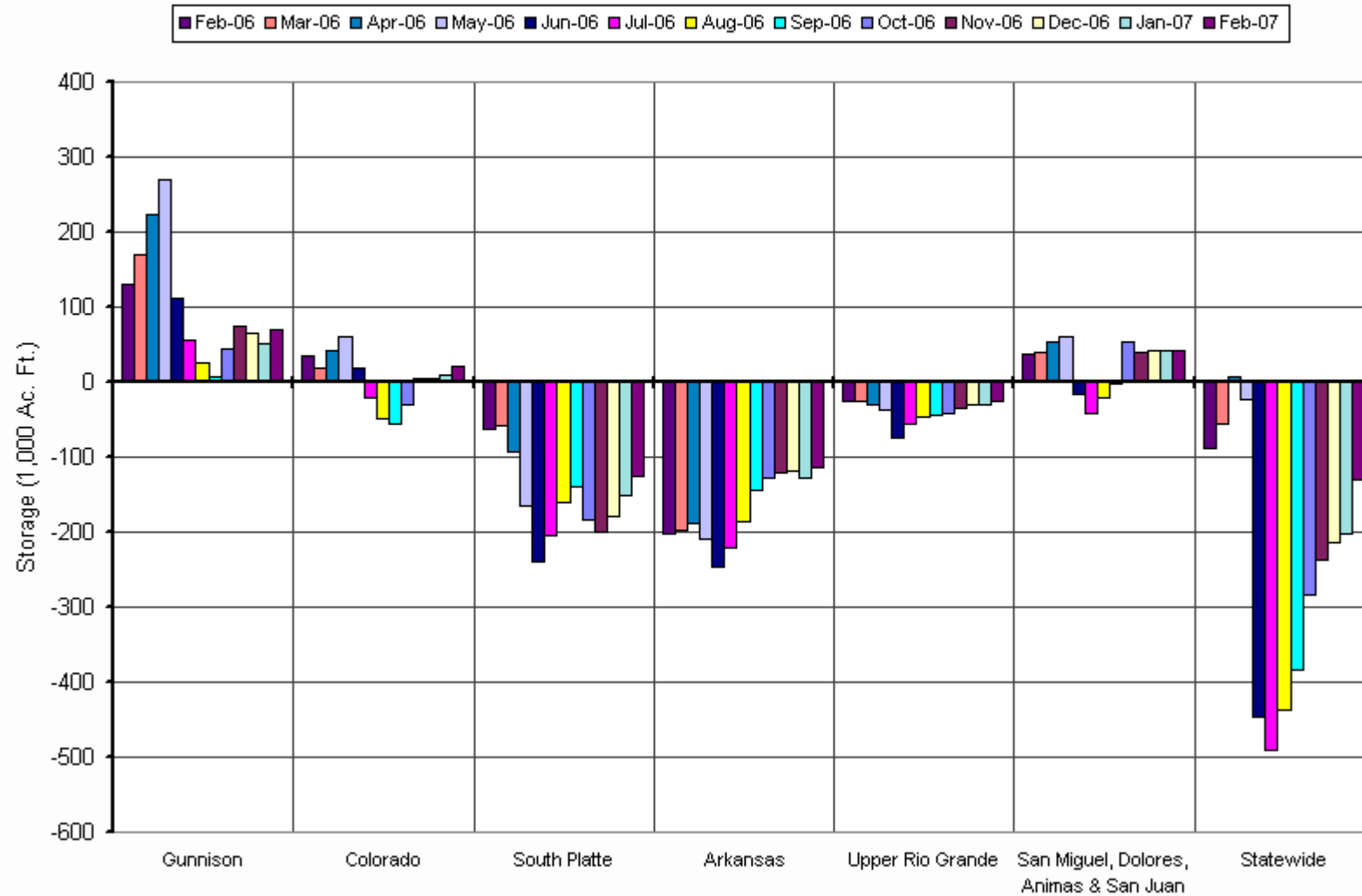


*Provisional Data
Subject to Revision*



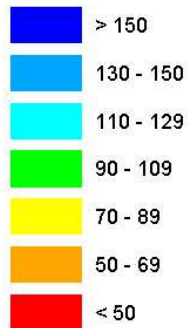
End of February 2007

COLORADO RESERVOIR STORAGE End-of-Month Departure from Average

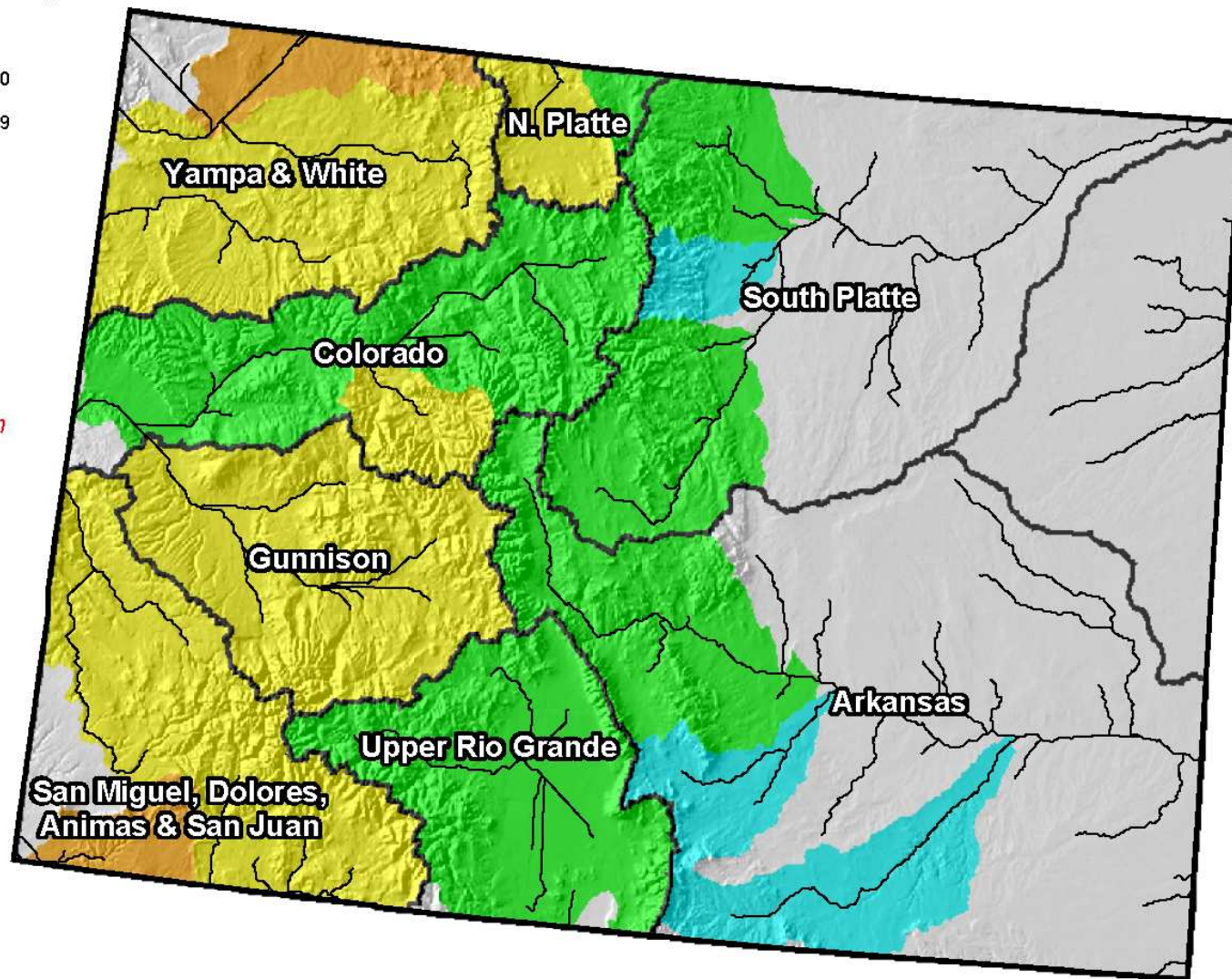


Colorado Streamflow Forecast Map

Percent of Average



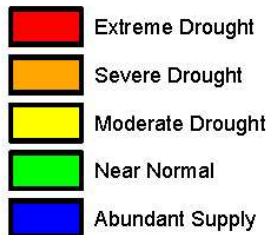
*Provisional Data
Subject to Revision*



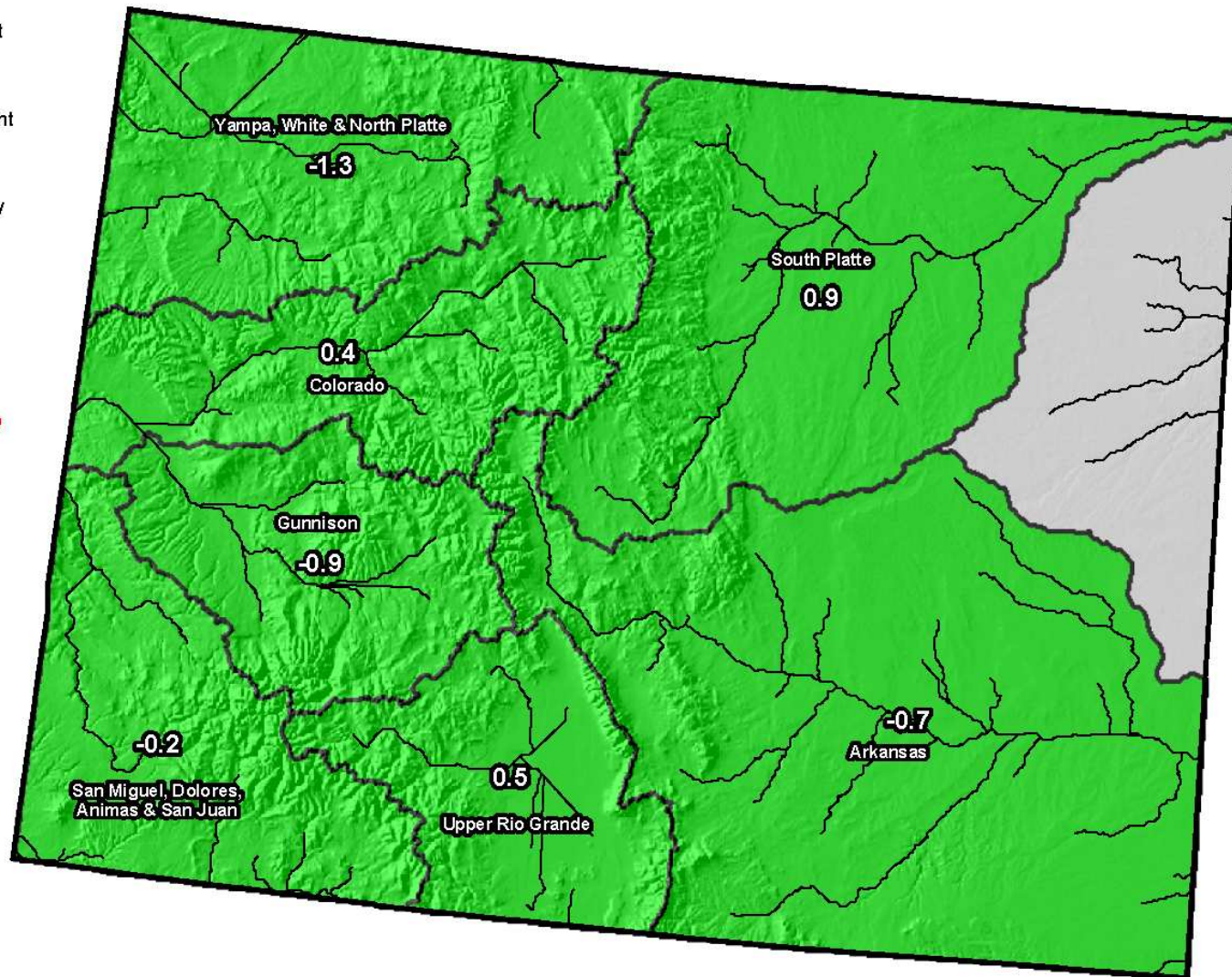
Current as of March 1, 2007

Colorado Surface Water Supply Index (SWSI) Map

Legend



*Provisional Data
Subject to Revision*



Current as of March 1, 2007