

**THE COLORADO BASIN ROUNDTABLE**  
**C/O .PO. BOX 1120**  
**GLENWOOD SPRINGS, COLORADO**  
**81602**

January 11, 2007

Mr. Rick Brown  
Intrastate Water Management and Development Section  
COLORADO WATER CONSERVATION BOARD  
1580 Logan Street, Suite 600  
Denver, CO 80203

Dear Rick:

At the December 18, 2006 Colorado Basin Roundtable (CBRT) meeting, the membership voted to pursue several projects, and are requesting that funding be allocated from the various funding sources available to support these projects. By previous letter, we have requested task order authorization for consultant work pursuant to HB 2006-1400, and are now requesting authorization and consideration for distribution of funds pursuant to SB 2005-179, either Basin funds or Statewide funds.

At the December 18<sup>th</sup> meeting, funding requests were considered for the following projects:

PROJECT AND AMOUNT REQUESTED	SOURCE
TOWN OF PALISADE-WHITEWATER PARK - \$100,000	BASIN
GRAND COUNTY/VAIL DITCH \$1,500,000	STATEWIDE
BULL CREEK RESERVOIRS \$150,000	BASIN
EAGLE PARK RESERVOIR \$250,000	STATEWIDE
ROARING FORK WATERSHED ASSESSMENT \$40,000	BASIN
GRAND COUNTY STREAMFLOW MANAGEMENT PLAN \$30,000	BASIN
RECOVERY PROGRAM 10,825 STUDY \$200,000	STATEWIDE
ENERGY DEVELOPMENT WATER NEEDS ASSESSMENT \$300,000	STATEWIDE

Project proponents were provided time to make presentations, along with questions from the Roundtable Members. Twenty-seven voting members of the Roundtable were present for this meeting, and after discussion, pre-printed ballots were distributed to all voting members. Members were instructed that even if a project had requested to be funded by Basin funds, they could vote for both or just for State wide funds, if they felt that the project should be funded, but did not want to support funding from the Basin funds.

After the ballots were filled out, they were collected by Rod Sharp, the CSU Extension Liaison, and were counted and transcribed to poster sheet. The By-Laws of the Colorado Basin Roundtable require a two-thirds majority vote of those present for any action, and thus 18 votes were required to support funding any proposal. With the exception of the Eagle Park Reservoir Enlargement Project, only the projects which were not recommended by the Roundtable for further consideration actually received any recorded "NO" votes. The Eagle Park Project received one "NO" vote, with 2 other ballots in which no vote was cast. In all other cases, individuals chose to not cast a vote in a particular category for a particular project, rather than casting a "NO" vote. All ballots were retained in the records of the Roundtable.

As a result of the discussion, review and balloting, the Colorado Basin Roundtable wishes to recommend the following projects for funding, to be considered at the March meeting of the Colorado Water Conservation Board.

#### **SB 179 BASIN FUNDS**

Roaring Fork Watershed Assessment  
Grand County Streamflow Management Plan

#### **SB 179 STATEWIDE FUNDS**

Acquisition of Vail Ditch by Grand County Interests  
Enlargement of Eagle Park Reservoir  
Energy Development Water Needs Assessment  
Upper Colorado Endangered Fish Recovery Program – Alternatives Analysis

The project recommended for Statewide funds were so recommended because they attempted to address multi-Basin issues and/or had multi-basin Roundtable support.

- a) The Acquisition of Vail Ditch is supported by Denver Water, and is an effort by Grand County entities to provide local solutions to water shortages due to transbasin diversions.
- b) The Enlargement of Eagle Park Reservoir is a continuation of the actions initiated in the Eagle River MOU, an agreement among various Eagle River Basin entities and the Homestake Partners.
- c) The Energy Development Water Needs Assessment is a joint project of the Colorado Basin and the Yampa-White Basin Roundtables in identifying and responding to the coming demands of major energy development in Garfield, Mesa, Rio Blanco and Moffat Counties.
- d) The Upper Colorado Endangered Fish Recovery Program – Alternative Analysis is a project currently supported by the Colorado Basin, South Platte Basin and Metro Basin Roundtables, with support from the

Mr. Rick Brown  
Intrastate Water Management and Development Section  
January 11, 2007  
Page 3

Arkansas Basin Roundtable, and is intended to identify a permanent supply of 10,825 Acre Feet of annual yield to assist with the recovery of the Endangered Colorado River fishes, an obligation of all of the water users from the Upper Colorado Basin.

By this letter, I am forwarding the ballot tabulation from the December meeting, as well as the applications and supporting materials for these projects, with the exception of the Energy Needs Assessment Study, which is being submitted by the Yampa-White Basin Roundtable.

We have also established a "Project Consideration Procedures Committee" to develop timelines and written procedures for Project Review and Balloting. While the process functioned well for this first effort, there were areas which will be improved upon for the June submittal.

The Colorado Basin Roundtable appreciates the support of the Department of Natural Resources, the Colorado Water Conservation Board and the Interbasin Compact Committee in furthering the development of Colorado's water and in fostering interbasin communications and discussions. We believe that these projects will assist in this effort.

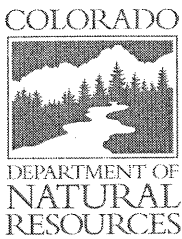
Sincerely yours,



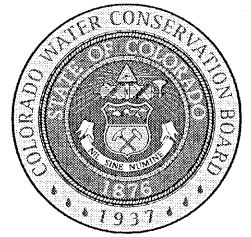
David H. Merritt, P.E.  
Chair, Colorado Basin Roundtable

Attachments:  
Ballot Tally  
Vail Ditch Project Grant Application  
10,825 Study Application  
Roaring Fork Watershed Assessment Application  
Grand County Stream Management Application  
Eagle Park Reservoir Enlargement Application

cc: Mr. Eric Hecox (*via e-mail*)



# COLORADO WATER CONSERVATION BOARD



## WATER SUPPLY RESERVE ACCOUNT 2006-2007 GRANT APPLICATION FORM

Vail Ditch Project, Colorado River Headwaters

Name of Water Activity/Project

River Basin Location

\$1,500,000

Amount of Funds Requested

☐

Basin Account

☒

Yes

☒

Statewide Account

☐

No

Please Check Applicable Box

Approval Letter Signed By  
Roundtable Chair and  
Description of Results of  
Evaluation and Approval  
Process

**\* For the Basin Account, the Application Deadline is 60 Days Prior to the Bimonthly CWCB meeting. The CWCB meetings are posted at [www.cwcb.state.co.us](http://www.cwcb.state.co.us) and are generally the third week of the month.**

**\* For the Statewide Account, the Application Deadline is 60 Days Prior to the March and September CWCB Board Meetings.**

**\* In completing the application you may attach additional sheets if the form does not provide adequate space. If additional sheets are attached please be sure to reference the section number of the application that you are addressing (i.e., A.1. etc.).**

**Instructions:** This application form should be emailed, typed, or printed neatly. The Water Supply Reserve Account Criteria and Guidelines can be found at <http://cwcb.state.co.us/IWMD/>. **The criteria and guidelines should be reviewed and followed when completing this application.** You may attach additional sheets as necessary to fully answer any question, or to provide additional information that you feel would be helpful in evaluating this application. Include with your application a cover letter summarizing your request for a grant. If you have difficulty with any part of the application, contact Rick Brown of the Intrastate Water Management and Development (Colorado Water Conservation Board) for assistance, at (303) 866-3514 or email Rick at [rick.brown@state.co.us](mailto:rick.brown@state.co.us).

Generally, the applicant is also the prospective owner and sponsor of the proposed water activity. If this is not the case, contact the Rick Brown before completing this application.

# Water Supply Reserve Account – Grant Application Form

Form Revised October 2006

Final

1/4/07

## Part A. - Description of the Applicant (Project Sponsor or Owner);

1. Applicant Name(s): Grand County

Mailing address:

P. O. Box 264  
Hot Sulphur Springs, CO 80451-264

Taxpayer ID#:

Email address:

lcurran@co.grand.co.us

Phone Numbers: Business:

970-725-3347

Home:

Fax:

970-725-0565

2. Person to contact regarding this application if different from above:

Name:

Lurline Underbrink-Curran

Position/Title

County Manager, Grand County

3. Provide a brief description of your organization below: Refer to Part 2 of criteria and guidance for required Information. Attach additional sheet(s) as needed.

Grand County is a subdivision of the State of Colorado and meets the eligibility requirements of the Account as a government. The Colorado Constitution Article XIV establishes the organization of the County. The Board of County Commissioners has authorities as authorized by the Colorado General Assembly.

This project has the following Sponsors:

Winter Park Water and Sanitation District,  
Grand County Water and Sanitation District No.1,  
Winter Park Ski Area,  
Town of Winter Park, and  
Colorado River District

Supporters:

Towns of Fraser, Granby, Hot Sulphur Springs, and Kremmling,  
Middle Park Water Conservancy District,  
Trout Unlimited

Please refer to Section 9. for additional information regarding the Project sponsors.

# Water Supply Reserve Account – Grant Application Form

Form Revised October 2006

Final

1/4/07

## Part B. - Description of the Water Activity – Please Refer to Criteria and Guidance Document for Eligibly Criteria

1. Name of water activity/project:

Vail Ditch Project

2. What is the purpose of this grant application? Check one.

☐

Environmental compliance and feasibility study

☐

Technical assistance regarding permitting, feasibility studies, and environmental compliance

☐

Studies or analysis of structural, nonstructural, consumptive, nonconsumptive water needs, projects, or activities (Please specify)

☒

Structural and/or nonstructural water project or activity

3. Please provide an overview of water project or activity to be funded including – type of activity, statement of what the activity is intended to accomplish, the need for the activity, the problems and opportunities to be addressed, expectations of the participants, why the activity is important, the service area or geographic location, and any relevant issues etc. Please include any relevant Tabor issues. Please refer to Part 2 of criteria and guidance document for additional detail on information to include. Attach additional sheets as needed.

#### Overview

The Vail Ditch Project is a structural and nonstructural water activity that will provide new water supplies to the headwaters of the Fraser River near Winter Park. The Colorado River Basin Roundtable approved the Vail Ditch project for consideration of statewide funding at the Roundtable's December 18<sup>th</sup>, 2006 meeting (see cover letter by Davvid Merritt, Roundtable Chairman). The project will supply water for environmental and municipal needs in Grand County as identified in the State Wide Water Supply Initiative (SWSI) and the Upper Colorado Study (UPCO).

Grand County is applying for funding from the Statewide Account in the amount of \$1,500,000. In addition, Grand County entities will provide up to \$1,500,000 in matching funds to secure the water supply project.

This project meets the threshold criteria adopted by the CWCB and the IBCC and outlined in the Water Supply Reserve Account Criteria and Guidelines, October 18, 2006.

Recent water planning efforts indicate that the Fraser River headwaters are facing critical water needs. The area needs new water supplies for both consumptive and non-consumptive demands. Local growth is booming and the water districts and Towns need certainty in their future water supplies. At the same time, Denver Water and the Municipal Subdistrict of the Northern Colorado Water Conservancy District are looking to firm-up supplies from their respective Moffat and Windy Gap transmountain supplies. In the midst of these pressures, water flow in the streams will more often approach critically low levels.

Since 1998, West and East Slope entities have been participating in a cooperative effort to address the water supply situation in the Upper Fraser and other headwaters areas, the so-called "UPCO" process. The State Water Supply Initiative essentially adopted and incorporated the detailed UPCO studies and results. The UPCO and SWSI processes provide the technical evaluation and basis for the Colorado River Basin Roundtable's recommendation of the Vail Ditch Project.

The Vail Ditch water supplies have a strategic position. The Vail Ditch diverts and stores water in Meadow Creek Reservoir, the northern most extension of the collection system used to convey water through Denver's Moffat Tunnel. With the use of Denver's system, the Meadow Creek supplies can be moved to the uppermost Fraser River, benefiting stream flow and human uses from Winter Park on downstream.

From a "water balance" point of view, the Vail Ditch water rights do not provide additional physical water supplies. However, these senior rights in particular can provide water supplies in the Fraser River headwaters at new locations and different times. From a regional point of view, Grand County believes the new uses will be beneficial to both the environment and the economic development within Grand County.

Subsequent sections of this Grant Application provide additional details and background regarding the Vail Ditch Project. Section 4 summarizes existing studies and Section 5 provides a Scope of Work for securing the water rights. In particular, Section 7 describes details on the project's operations, water availability and sustainability and Section 8 addresses the Criteria and Guideline's Evaluation Criteria.

## Water Supply Reserve Account – Grant Application Form

Final

Form Revised October 2006

1/4/07

4. Please provide a brief narrative of any related or relevant previous studies. Attach additional sheets as needed.

### Study Area

The Study Area includes the Colorado River Basin above Kremmling (Attachment A). The technical evaluations focused on the upper Colorado, Fraser, Williams Fork, and Blue Rivers. Even so, considerable attention was paid to the entire Basin because of the inter-related operations of the region's water supply projects. Grand County is home to the Colorado Big-Thompson and Moffat Collection System transmountain diversion projects. To many, the physical setting of Grand County typifies the Colorado Rocky Mountains.

The economy of Grand County is mix of recreation, tourism, and agriculture. The growing communities are a haven for mountain living. At the same time, ranching and the ample open space provides the cultural connection and recreation opportunities that the residents desire.

Grand County is growing in population at rates slightly higher than Colorado as a whole. Since 1970, the County's population has grown from 4,000 to 13,000, nearly 200%. A complete socioeconomic profile was completed in March 2006 and can be found on-line at: [http://co.grand.co.us/Planning/Reg.%20books/p Grand County Colorado.pdf](http://co.grand.co.us/Planning/Reg.%20books/p%20Grand%20County%20Colorado.pdf)

In terms of water development, Grand County developed agricultural supplies relatively early in the State's history to supply ranching and farming operations. Next in priority, and significant in terms of diversions, are Denver and Northern's transmountain diversion projects. Water development for local municipal use took-off in the 1970's when Winter Park Ski Area and the Towns began to grow. More recently, the CWCB appropriated minimum instream flows, the Municipal Subdistrict completed the Windy Gap project and Wolford Mountain Reservoir was built. Grand County is a workhorse for the State of Colorado's water supplies.

### Previous Studies

Recent studies provide analysis and description of Grand County's water supply needs. The Upper Colorado Study (Hydrosphere, 2003) is a detailed needs assessment and documents the existing and future water supply issues facing the area. The State Water Supply Initiative reviewed and adopted the UPCO findings for issues related to Grand County (CWCB, 2005). Since 2003, the UPCO participants have completed an alternatives analysis that includes a detailed evaluation of the Vail Ditch.

(Continued)



## Water Supply Reserve Account – Grant Application Form

Final

Form Revised October 2006

1/4/07

### Previous Studies (Continued)

The UPCO participants include East and West Slope water providers, water districts, governments, and non-government organizations:

Grand County	Trout Unlimited
Winter Park Water and Sanitation District	Denver Water
Grand Co. Water and Sanitation District	Middle Park WCD
Northern Colorado WCD	Town of Winter Park
Northwest COG	Town of Granby
Winter Park West Water and Sanitation	Town of Fraser
Town of Kremmling	Colorado River District
Summit County	

The cooperative effort proceeded in three phases:

- Phase I - data collection and documentation (1998-2001),
- Phase II - needs assessment (2001 - 2003), and
- Phase III - water supply project alternatives analysis (ongoing).

The work indicates water supply shortages in Grand County for both consumptive and non-consumptive uses. In fact, Grand County had periodically experienced historically low stream flows and critically low municipal water supplies in 2002- 2004. The primary water supply "pinch point" is known to be the Fraser River near Winter Park.

The UPCO Phase II reported municipal water shortages at Winter Park. The district's experience occasional seasonal shortages under the existing demands. As in- and out-of-basin uses increase, the shortages become more frequent and larger. The most pronounced municipal shortages are under "full-use" conditions at Winter Park Water and Sanitation District and Grand County Water and Sanitation District #1. The shortages are physical supply shortages as opposed to legal shortages that may come about because of water rights issues. At times of critical supply shortages, municipal shortages at Winter Park totaled nearly 2,000 AF.

The report also quantified "environmental" shortages. Environmental shortages were tallied whenever the daily flows were less than CWCB instream flows or current minimum receiving water flows at the combined waste water treatment plant (located just below St. Louis Creek at the Town of Fraser). The environmental shortages totaled nearly 8,000 AF in certain dry years.

Phase III focused on evaluating projects that could potentially alleviate the water supply shortages. In-basin storage, pump backs, agricultural conversions, conservation, and less in-basin municipal development, and conservation were all considered in the alternatives. As it turns out, the best overall solution relies on all these means to optimize facilities and make the highest use of the area's limited water supplies. Counting Vail Ditch, Grand County's ultimate water supply solutions will include new pumping and pipeline facilities, small in-basin storage reservoirs, as well as new cooperative and productive institutional relationships.

For the full UPCO Phase II report click:

<http://www.nwc.cog.co.us/Programs/Water/upcofinalreport.pdf>

# Water Supply Reserve Account – Grant Application Form

Final

Form Revised October 2006

1/4/07

5. Please provide a copy of the proposed scope of work. Please refer to Part 2 of the criteria and guidance document for detailed requirements. Attach additional sheets as needed.

## Scope of Work

The Vail Ditch Project will use the Account and the sponsor's funds to purchase shares of the Grand County Irrigated Land Company. The shares are held by a private party who is a willing seller. The Project contemplates acquiring approximately 20% of the company.

In September 2006, the Sellers, GCWSD, WPWSD, and the River District entered into an eight month "exclusive right to negotiate" agreement. The agreement terminates in April 2007. The objective is to negotiate the purchase in early 2007 and close later that year.

The Project sponsors have already completed several important evaluations regarding the Vail Ditch water rights (see Section 4, Previous Studies). To be sure, there are numerous other activities that need to be done before the supplies can be made available for use at Winter Park. Foremost among these is developing a process for working through issues with the shareholders and other water users. This Section outlines additional work elements that the project will complete.

1. Grand County Irrigated Land Company Issues
  - a. Objective. Initiate a process for working with the Company that will determine the likely range of impacts from the Project and develop measures to prevent injury.
  - b. Timeline. Begin early 2007. It is likely that these efforts will continue for at least one year.
  - c. Activities. Technical and legal evaluations focusing on water use patterns, supplies, facilities, and operations.
  - d. Participants. Project Sponsors, shareholders, and State Engineer.
2. Granby Mesa Hydrogeology Evaluation
  - a. Objective. Evaluate and characterize the surface water and groundwater interactions in the area of Granby Mesa.
  - b. Timeline. Begin February 2007 and complete by November 2007.
  - c. Activities. Complete field work to map the nature and extent of the shallow groundwater aquifer on Granby Mesa.
  - d. Participants. Project Sponsors, Grand County, shareholders, well permit holders.
3. Vail Ditch Project Participation Agreement
  - a. Objective. Develop the detailed agreement for participation in the project.
  - b. Timeline. 2007
  - c. Activities. Determine allocation of costs between the project Sponsors.
  - d. Participants. Grand County, WPWSD, GCWSD #1, River District, Winter Park Ski Area, and the Towns

(Continued)

---

Scope of Work (continued)

4. Grand County Streamflow Management Plan
  - a. Objective. Determine how the Vail Ditch supplies complement stream flow management plans.
  - b. Timeline. Begin 2007
  - c. Activities. Coordinate water supply planning
  - d. Participants. All
  
5. Denver Water Issues
  - a. Objective. Determine cooperative solutions for Grand County's and Denver's water supply interests in the Fraser River which results in agreement by Denver Water to operate its system to enhance flows in the upper Fraser River using Vail Ditch water.
  - b. Timeline. Ongoing, completion tied to Denver's Moffat Project EIS
  - c. Activities. Various technical and legal activities including discussions with City of Englewood and Climax regarding operational interests in the Cabin-Meadow Creek system.
  - d. Participants. All

**Water Supply Reserve Account – Grant Application Form****Final**

Form Revised October 2006

1/4/07

6. List the names and addresses of any technical or legal consultants retained to represent the applicant or to conduct investigations for the water activity/project.

Name	Address/Phone Number
Bishop-Brogden Associates Mike Sayler	333 W. Hampden Ave. Suite 1050 Englewood, CO 80110  303-806-8952
Leonard Rice Janet Williams	2000 Clay Street Denver, CO 80211  303-455-9589
Canyon Water Resources, LLC Jim Pearce	685 Canyon Creek Dr. Glenwood Springs, CO 81601  970-379-6918

7. Water Availability and Sustainability – this information is needed to assess the viability and effectiveness of the water project or activity. Please provide a description of each water supply source to be utilized for, or the water body to be affected by, the water activity. For water supply sources being utilized, describe its location, yield, extent of development, and water right status. For water bodies being affected, describe its location, extent of development, and the expected effect of the water activity on the water body, in either case, the analysis should take into consideration a reasonable range of hydrologic variation. Attach additional sheets as needed.

#### Viability and Effectiveness

The Vail Ditch water supplies hold a strategic position in Meadow Creek. The water rights are senior in priority to the Meadow Creek Extension of Denver's Moffat Tunnel Collection System. And, the Land Company controls storage in Meadow Creek Reservoir. The Company's direct flow rights divert below the Cabin-Meadow Creek headgate. Finally, there is an existing model for Grand County's use of the Vail Ditch supplies in the upper Fraser River and tributaries near Winter Park.

Denver Water and the Grand County water providers have contractual arrangements under which Denver supplies "by-pass" flows to the upper Fraser River at various locations. By-pass flows are water supplies that are in-priority to Denver's Moffat System, but Denver agrees not to divert. The water providers may divert the by-passed water under their own water right priorities (that are senior to the CWCB in-stream flows) using replacement supplies to make up depletions at either Shoshone or Cameo. The Vail Ditch Project is an extension of this concept.

However, even without Denver's participation the supplies represent lasting value to the West Slope. Ownership of this portion of the Vail Ditch will assure that the associated supplies will remain in Grand County. The supplies include high elevation storage, a scarce and very limited resource in the Fraser Basin. The water supplies serve many of the same purposes with or without Denver's participation.

#### Affects of Development

The Vail Ditch project contemplates changing the use of agricultural water supplies. Consequently, detailed planning efforts will consider the impacts on existing water users (no injury) and in particular, the other shareholders in the Ditch. Grand County and the project sponsor's will work with affected parties to evaluate impacts and implement reasonable actions to off set impacts and provide additional benefits to the Company. A guiding principle of the Vail Ditch project has been and will continue to be "don't solve one problem by creating another."

The project's Scope of Work (Section 5) outlines a preliminary approach for working with the potentially affected parties.

#### Water Supply Yields

The Vail Ditch irrigation supplies have good yield and firm supplies. The Ditch Company's Meadow Creek rights are first in priority on Meadow Creek for approximately 65 cfs of direct diversion. The Headgate #2 on Strawberry Creek can divert all of the Company's Meadow Creek supplies and holds 65 cfs (third priority) on that tributary. In addition, the Company has a contractual right to the first 850 AF of storage in The rights are senior to the "Cameo" water rights in the Grand Valley. State Engineer's records indicate consistent diversion and beneficial use.

(Continued)

---

Water Supply Yields (continued)

The records indicate that the Vail Ditch supplies irrigate approximately 600 acres. Cropping patterns in the area have varied over time. Early on, the diversions irrigated vegetable fields of the Great Western Head Lettuce Company. Even now, Morales Farms grows choice vegetables on Granby Mesa. Still, most of the irrigated acreage under the ditch produces meadow hay.

The project sponsors expect that the transferred water supplies will provide water in the amounts and timing to cover high value and critical uses. Keep in mind that the volumes of shortages in the upper Fraser are relatively small. Even modest amounts of new water supplies will make a difference between depleting stream flows at Winter Park below CWCB minimum flows or not.

Sustainability

The project offers opportunities to develop and use the Vail Ditch supplies in a manner that will add value to the environment and economy of Grand County. The key is to foster an adaptive and cooperative process to integrate the Vail Ditch supplies into Grand County's streamflow management plan. The focus of the streamflow plan is to develop a sustainable river system in Grand County. The Vail Ditch supplies provide an important element that can potentially help optimize water management and turn several seemingly competing water interests into complimentary solutions.

8. If you have not specifically and fully addressed the Evaluation Criteria found in Part 3 of the criteria and guidance document please provide additional detail here. Attach additional sheet(s) if needed.

The preceding sections address the Evaluation Criteria in detail. This section summarizes how this water supply activity addresses the Criteria as outlined in Section 3 of the Water Supply Reserve Account Criteria and Guidelines.

Threshold Criteria

- The Vail Ditch project meets the eligibility requirements of the program
- The activity is consistent with Section 37-75-102 C.R.S.
- The Colorado River Basin Round Table approved this application at their December 18<sup>th</sup>, 2006 meeting by a unanimous vote with one ballot not voting
- This activity meets the provisions of 37-75-104 (2) (c), C.R.S.

Evaluation Criteria

- Promotes Collaboration and Cooperation
  - o This activity meets non-consumptive and consumptive water needs for multiple entities in Grand County.
  - o The sponsoring and supporting entities include both West Slope and East Slope parties and the activity addresses intrabasin and interbasin water interests.
- Facilitates Water Activity Implementation
  - o The sponsoring parties will contribute up to \$1.5 million; the grant funding is required to enable this project to move ahead.
  - o Time is of the essence. Although investigations of the Vail Ditch water supplies have continued over the last several years, only now are important shareholders interested in selling. The project sponsors have an exclusive right to negotiate a purchase, but that option terminates in April 2007.
  - o This project will take several years to develop. There are important administrative and institutional activities that will take some time. Meanwhile, we expect to work out an arrangement with the seller and continue to irrigate with the supplies.
  - o The applicant has the expertise and ability to implement this project.
  - o The applicant and project sponsors are providing matching funds and in-kind contributions to develop the Vail ditch Project.
  - o The sponsoring entities have a demonstrated need for financial assistance.

(Continued)

(Evaluation Criteria Summary - continued)

- Meeting Water Management Goals and Objectives and Identified Water Needs
  - The selection of this activity is based on needs assessments completed and fully funded by the Project's sponsors and supporters.
  - The Vail Ditch Project meets the SWSI water management objectives and promotes water efficiency.
  - The water providers have existing water conservation plans.
  - The activity takes advantage of unused capacity in existing facilities.
- Water Activity Addresses Issues of Statewide Value
  - During certain years, this water activity will enhance agricultural supplies and in others supplement municipal uses or stream flows.
  - The project is so small that its impact on Compact issues is insignificant.
  - As with Compact issues, this project's impact on T&E issues is negligible.
  - Winter Park is where the Front Range recreates. This water will help sustain the recreational, environmental, and economic values of Colorado as a whole.



**Water Supply Reserve Account – Grant Application Form**

Form Revised October 2006

**Final**

1/4/07

9. Additional Information – If you feel you would like to add any additional pertinent information please feel free to do so here. Attach additional sheets as needed.

**Winter Park Water and Sanitation District**

- Supplies "Old Town" Winter park and Winter Park Ski Area
- Currently serving 1,500 SFEs, estimated "build-out" 3,500 SFEs
- Water treatment capacity 0.5 mgd
- Waste water return flows treated at Winter Park WWTP
- Water supply shortages at Fraser River intakes

**Grand County Water and Sanitation District #1**

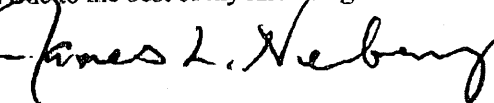
- Serves Town of Winter Park
- Currently serving 2,300 SFEs, estimated "build-out" 8,300 SFEs
- Water treatment capacity 1.4 mgd
- Waste water return flows treated at Combined WWTP near Fraser
- Water supply shortages at Vasquez Creek intakes

**Winter Park Ski Area**

- Snow making demands and some on mountain domestic uses
- Currently permitting a small storage facility for snow making
- Sufficient water supplies for existing and future needs

The above statements are true to the best of my knowledge:

Signature of Applicant:



Print Applicant's Name: James L. Newberry

Project Title: Vail Ditch Project, Colorado River Headwaters

**Return this application to:**

Mr. Rick Brown  
Intrastate Water Management and Development Section  
COLORADO WATER CONSERVATION BOARD  
1580 Logan Street, Suite 600  
Denver, CO 80203

To submit applications by Email, send to: [rick.brown@state.co.us](mailto:rick.brown@state.co.us)

---

**Reference Information**

The following information is available via the internet. The reference information provides additional detail and background information regarding these criteria and guidelines and water policy issues affecting our state.

Colorado Water Conservation Board Policies

Loan and Grant policies and information are available at - <http://cwcb.state.co.us/Finance/>

Water Supply Reserve Account Criteria and Guidelines –

[http://cwcb.state.co.us/IWMD/tools.htm#Water\\_Supply\\_Reserve\\_Account](http://cwcb.state.co.us/IWMD/tools.htm#Water_Supply_Reserve_Account)

Interbasin Compact Committee and Basin Roundtables

Interbasin Compact Committee By-laws and Charter –

<http://dnr.state.co.us/Home/ColoradoWaterforthe21stCentury/Interbasin+Compact+Committee/IbccHomePage.htm>

Basin Roundtable By-laws –

<http://dnr.state.co.us/Home/ColoradoWaterforthe21stCentury/IbccHome.htm>

Legislation

House Bill 05-1177 - Also known as the Water for the 21<sup>st</sup> Century Act –

<http://cwcb.state.co.us/IWMD/statutes.htm>

House Bill 06-1400 – Adopted the Interbasin Compact Committee Charter –

<http://cwcb.state.co.us/IWMD/statutes.htm>

Senate Bill 06-179 – Created the Water Supply Reserve Account –

<http://cwcb.state.co.us/IWMD/statutes.htm>

Statewide Water Supply Initiative

General Information - <http://cwcb.state.co.us/IWMD/>

Phase 1 Report - <http://cwcb.state.co.us/IWMD/PhaseIReport.htm>

***COLORADO BASIN ROUNDTABLE***  
***REQUEST FOR WATER SUPPLY RESERVE ACCOUNT***  
**2006-2007 GRANT APPLICATION FORM**

**BALLOT FOR FUND REQUEST**

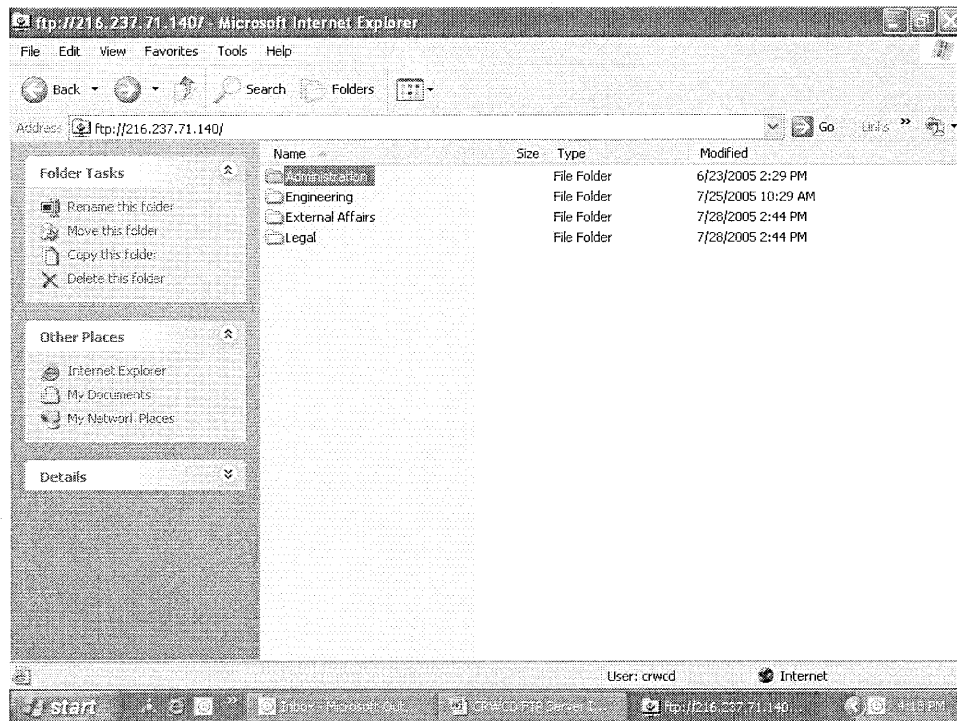
**DECEMBER 18, 2006**

<b>PROJECT NAME</b>	<b>SB-179- BASIN FUNDS</b>	<b>SB-179 STATE FUNDS</b>	<b>HB-1400 FUNDS</b>
<b>TOWN OF PALISADE-WHITEWATER PARK</b> \$100,000	<b>5 YES</b> <b>8 NO</b>	<b>10 YES</b> <b>6 NO</b>	
<b>GRAND COUNTY/VAIL DITCH</b> \$1,500,000		<b>27 YES</b>	
<b>BULL CREEK RESERVOIRS</b> \$150,000	<b>13 YES</b> <b>2 NO</b>	<b>16 YES</b> <b>1 NO</b>	
<b>EAGLE PARK RESERVOIR</b> \$250,000	<b>1 NO</b>	<b>25 YES</b>	
<b>ROARING FORK WATERSHED ASSESSMENT</b> \$40,000	<b>27 YES</b>	<b>7 YES</b>	
<b>GRAND COUNTY STREAMFLOW MANAGEMENT PLAN</b> \$30,000	<b>27 YES</b>	<b>6 YES</b>	
<b>RECOVERY PROGRAM 10,825 STUDY</b> \$200,000		<b>25 YES</b>	<b>2 YES</b>
<b>ENERGY DEVELOPMENT WATER NEEDS ASSESSMENT</b> \$300,000		<b>25 YES</b>	<b>2 YES</b>

## CRWCD FTP Server Instructions

**Purpose:** To transmit and receive files greater than 2 Mb in size.

1. Using Internet Explorer (IE), enter the following address of the FTP server, <ftp://216.237.71.140>. *Suggestion: Create a Favorite to help remember this address location.*
2. You will be prompted for a username: **crwcd** and password: **crwcd**.
3. The following screen will appear.



4. From the F drive, **COPY** the desired file and **PASTE** it under the appropriate folder location on the FTP server (ex. Admin, Legal, Engineering, or External Affairs).
5. Send the following link, <ftp://216.237.71.140>, in an e-mail message to person wanting to retrieve the file along with the username: **crwcd** and password: **crwcd** and the location (i.e., folder) and name of the file to be retrieved.
6. Instruct them that once they accessed the FTP server and retrieved the file using COPY and PASTE commands to please inform you that they have successfully retrieved the file.
7. Once you know that the file has been retrieved, please log back onto the ftp server and DELETE the file. We do not want to keep files on the FTP server. Admin staff will review the FTP server on a weekly basis and remove any file that has been on the server for more than two weeks.

**NOTE:** If the person retrieving the file is using XP service pack 2, they may get a permissions error message. If so, they will need to change a setting in IE. Instruct them to access IE, go to the Tools menu, Internet options, Advanced tab. Under Browsing, have them uncheck "Use passive FTP" (for firewall and DSL modem compatibility). Have them try again and they should get in this time.