

NRCS - Snow Survey & Water Supply Forecasting

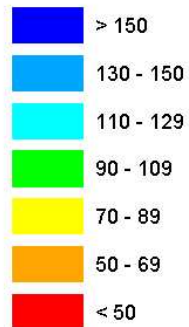


Mike Gillespie

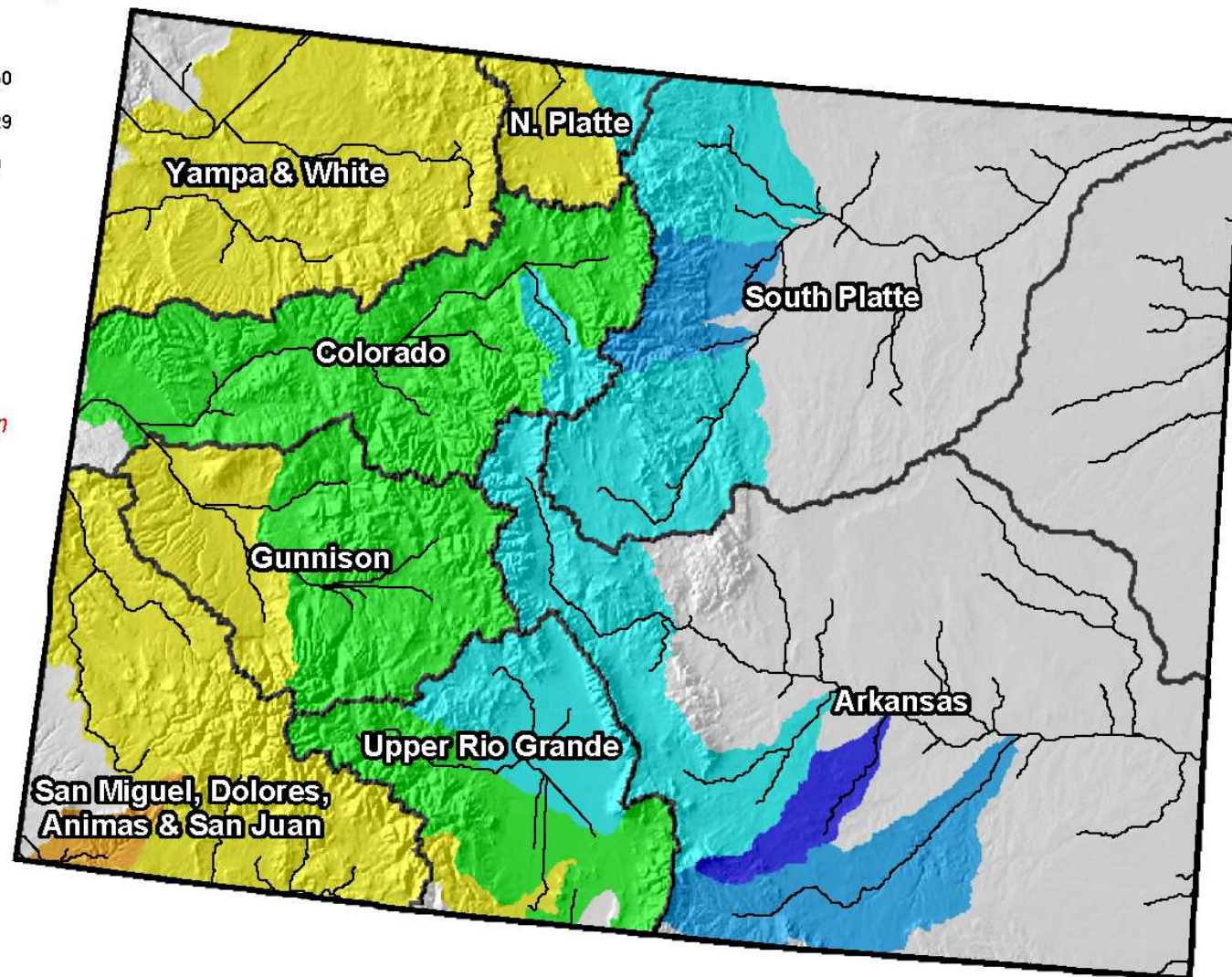
Water Availability
Task Force Meeting
February 16, 2007

Colorado Snowpack Map

Percent of Average



*Provisional Data
Subject to Revision*



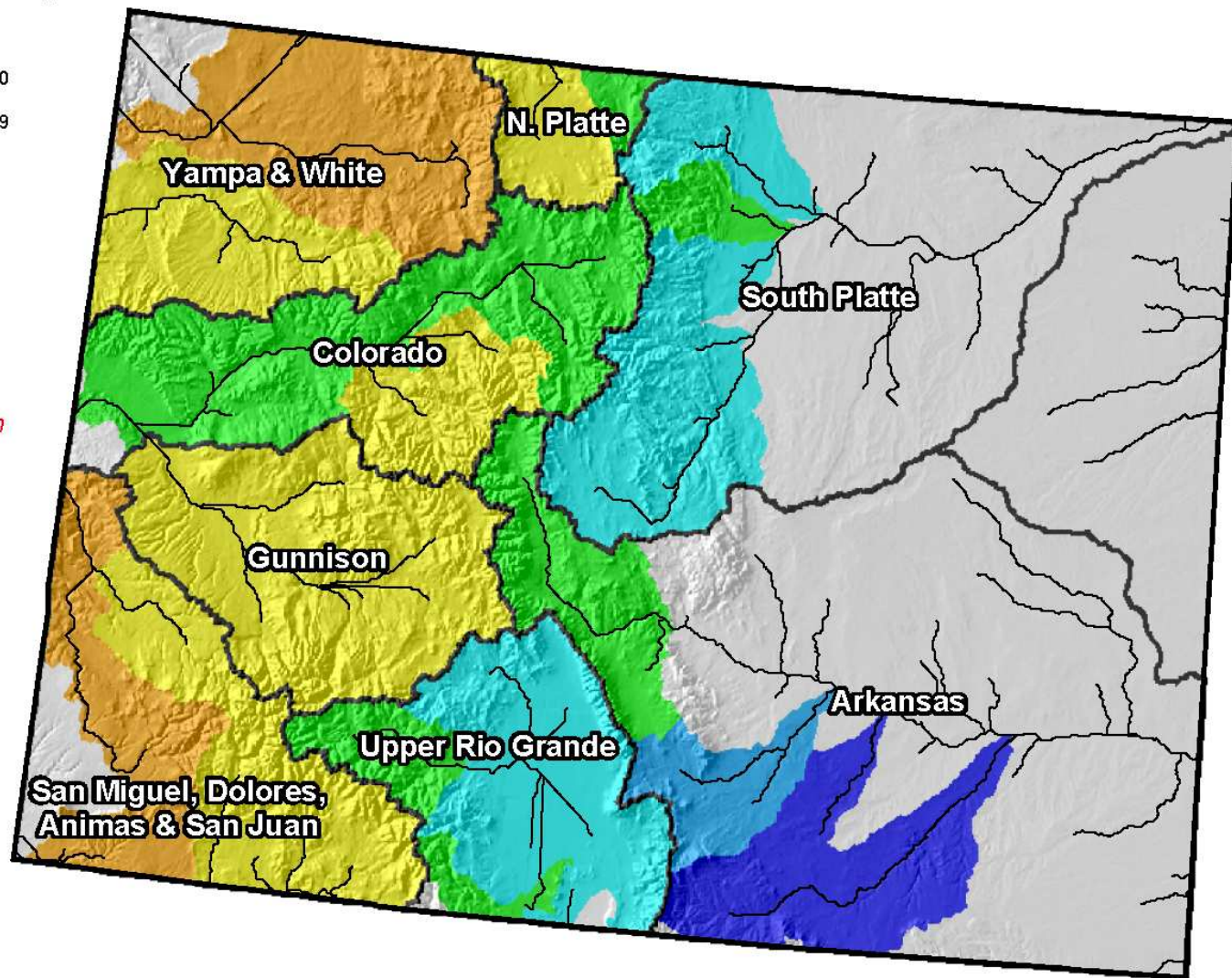
Current as of January 1, 2007

Colorado Snowpack Map

Percent of Average



*Provisional Data
Subject to Revision*

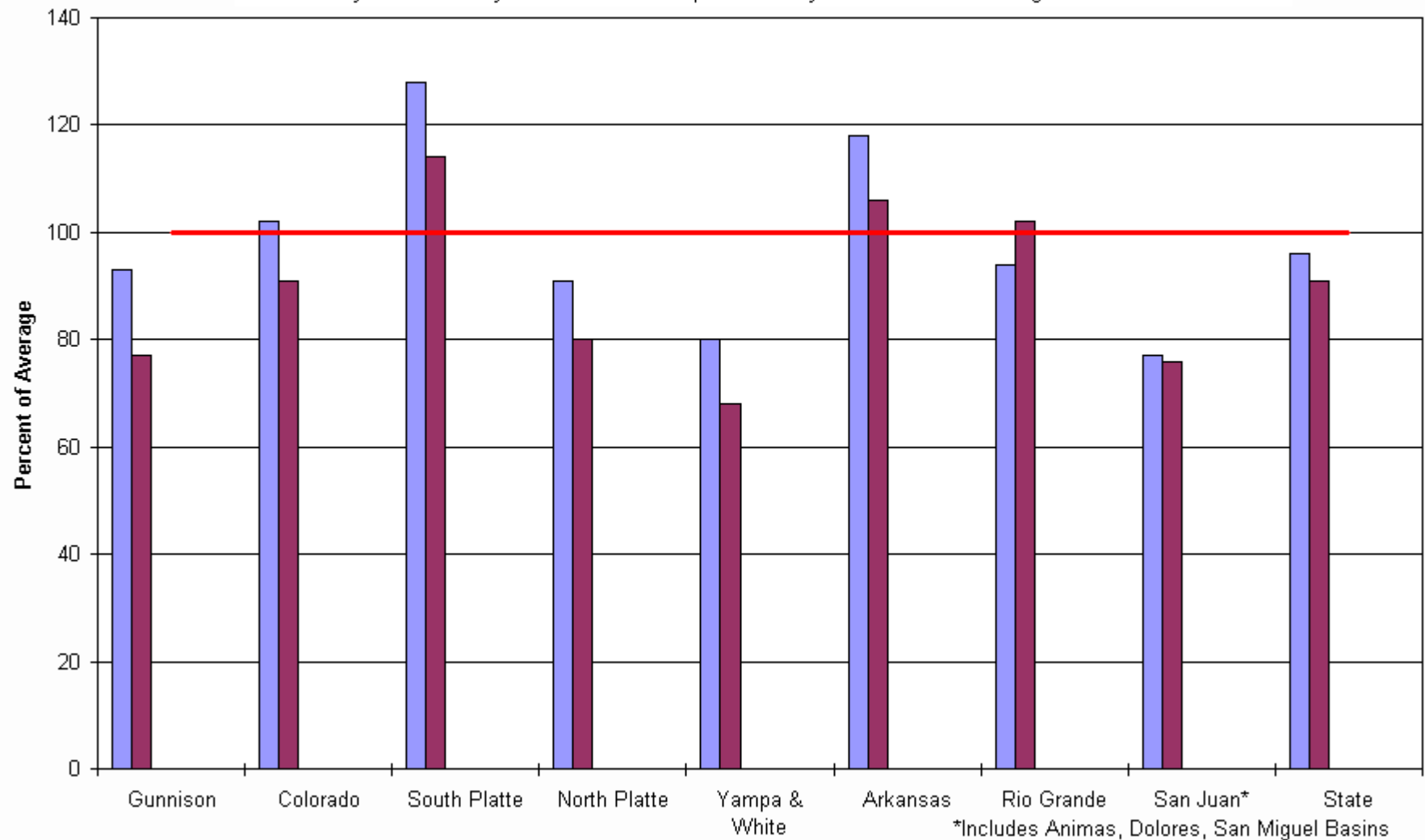


Current as of February 1, 2007

Colorado Snowpack Summary for 2007

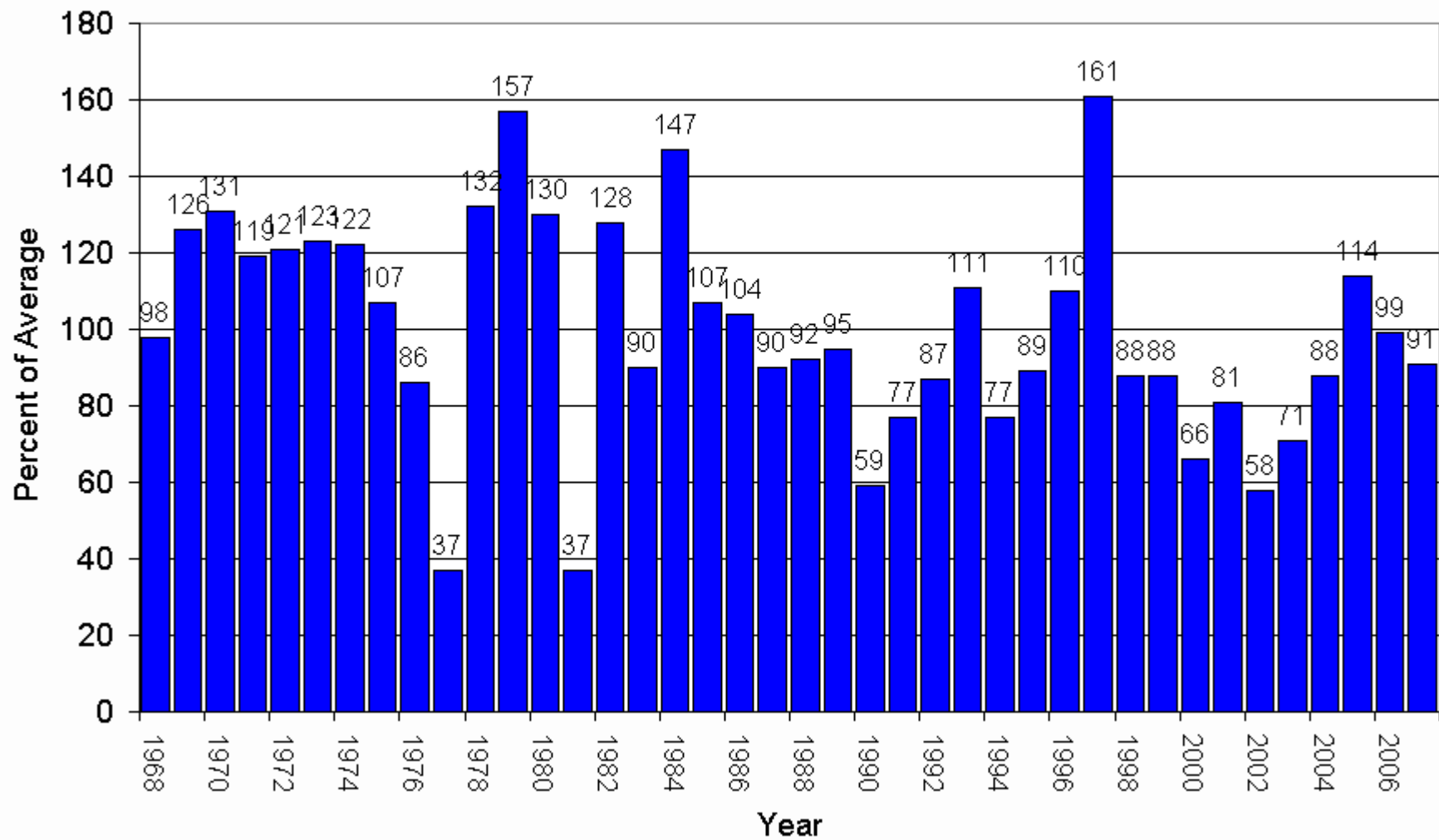
USDA Natural Resources Conservation Service

January February March April May June Average



Statewide Snowpack

February 1

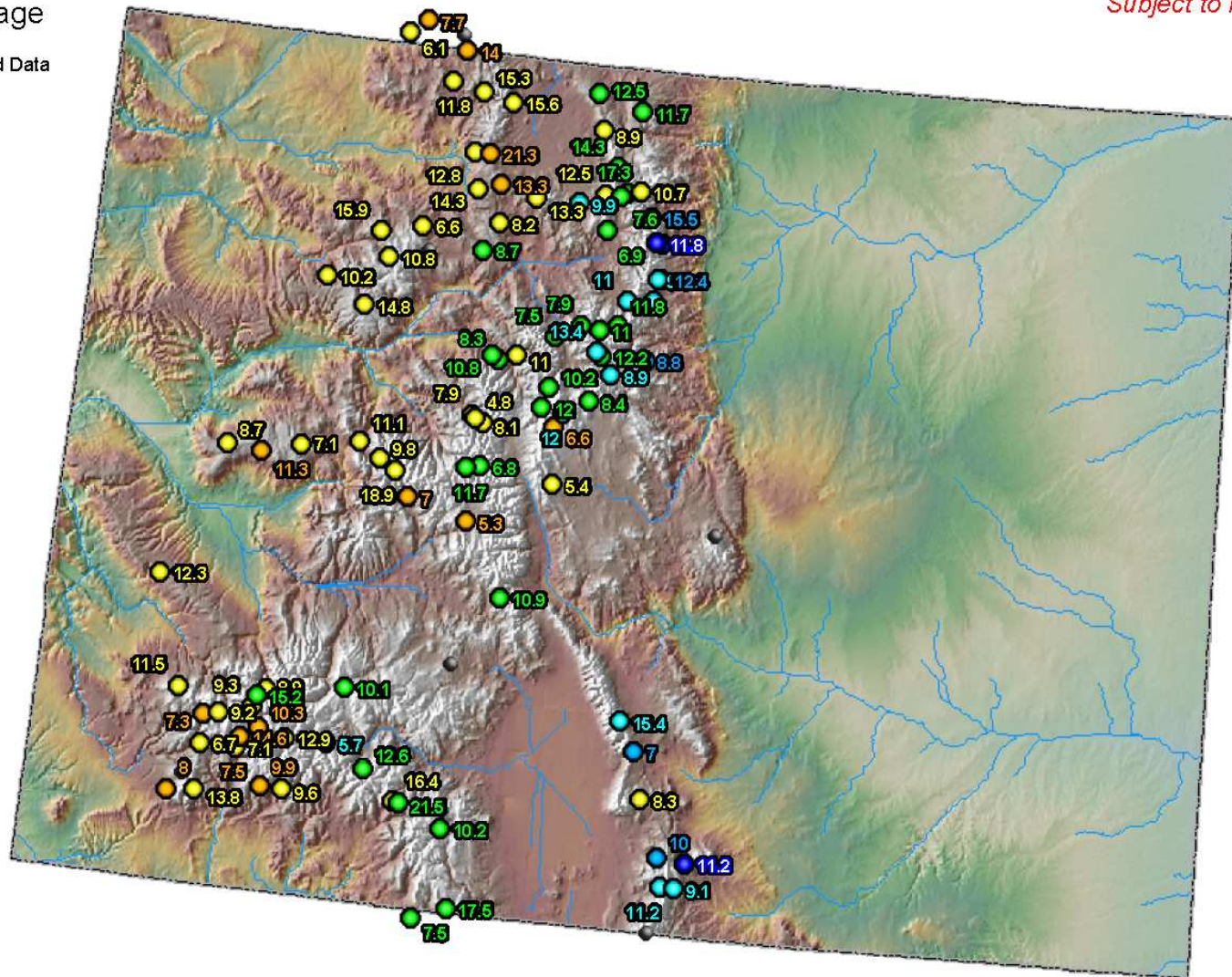


Colorado SNOTEL Snow Water Equivalent (inches)

Legend
Percent of Average

- Missing or Invalid Data
- < 50
- 50 - 69
- 70 - 89
- 90 - 109
- 110 - 129
- 130 - 149
- >= 150

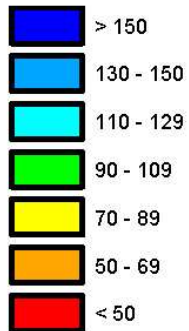
*Provisional Data
Subject to Revision*



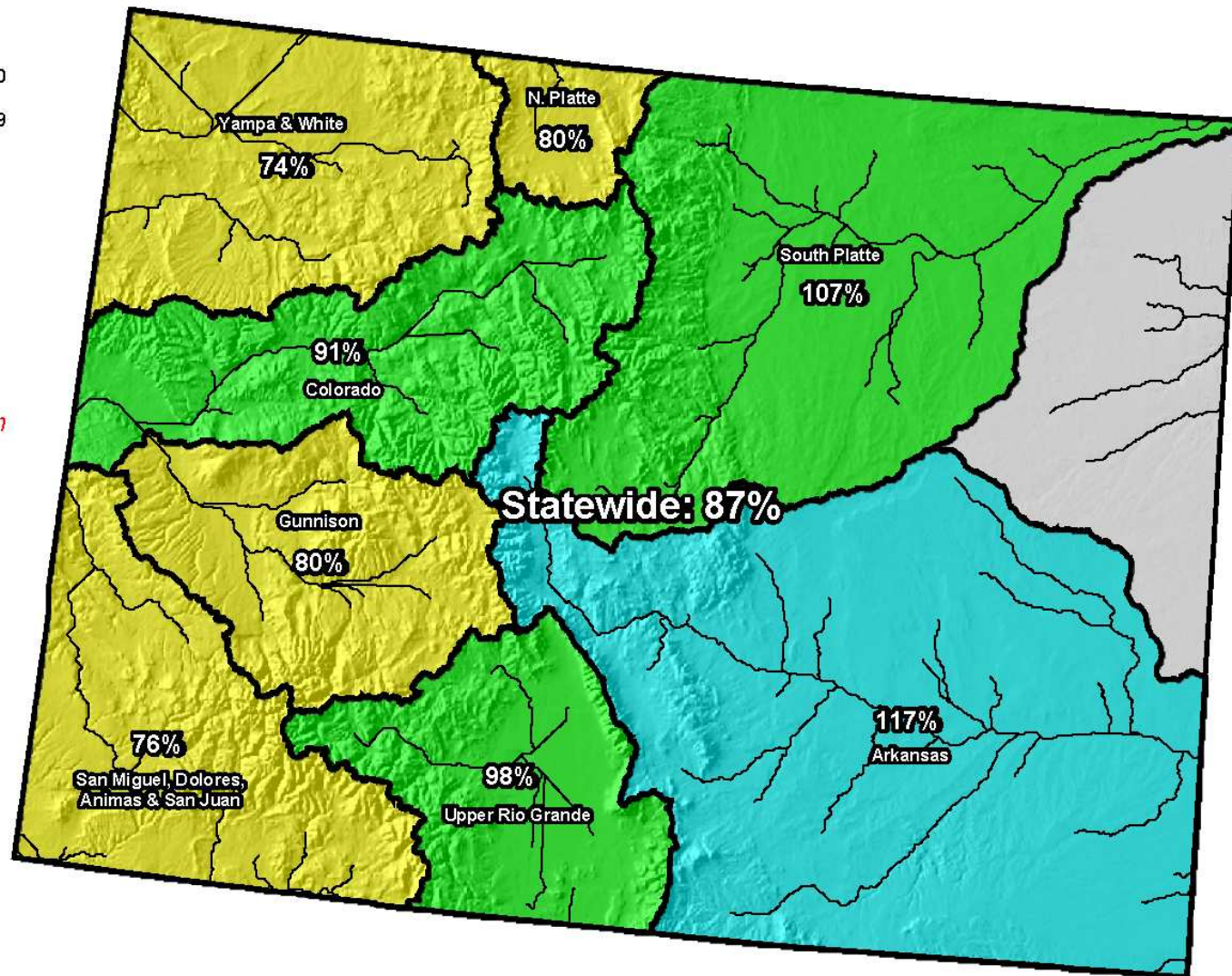
Current as of Feb 16, 2007

Colorado SNOTEL Snowpack Update Map

Percent of Average



*Provisional Data
Subject to Revision*



Current as of Feb 16, 2007

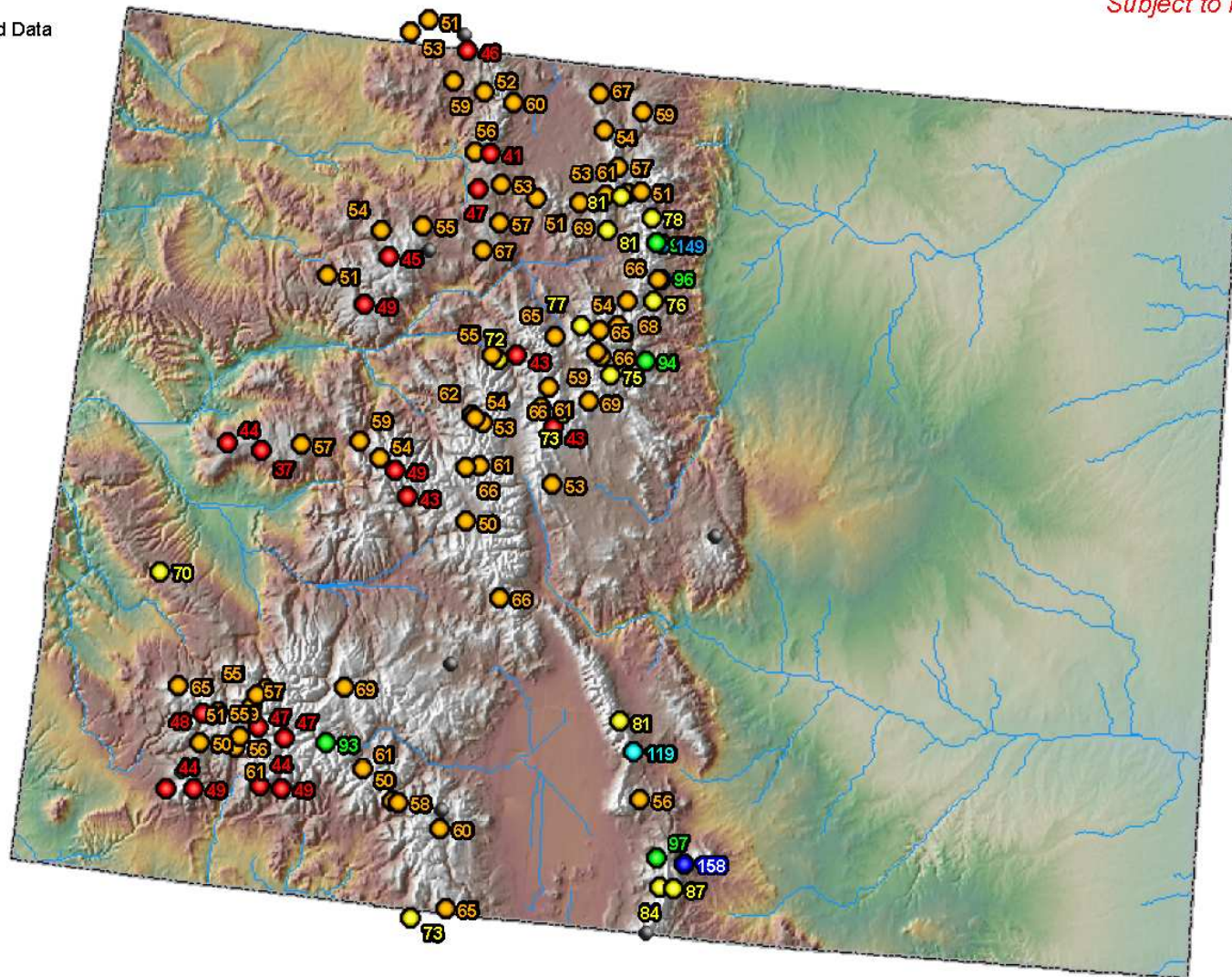
*Data may not provide a valid measure of conditions

Colorado SNOTEL Snow Water Equivalent as Percent of Average Peak SWE

Percent of Avg Peak

- Missing or Invalid Data
- < 50
- 50 - 69
- 70 - 89
- 90 - 109
- 110 - 129
- 130 - 149
- ≥ 150

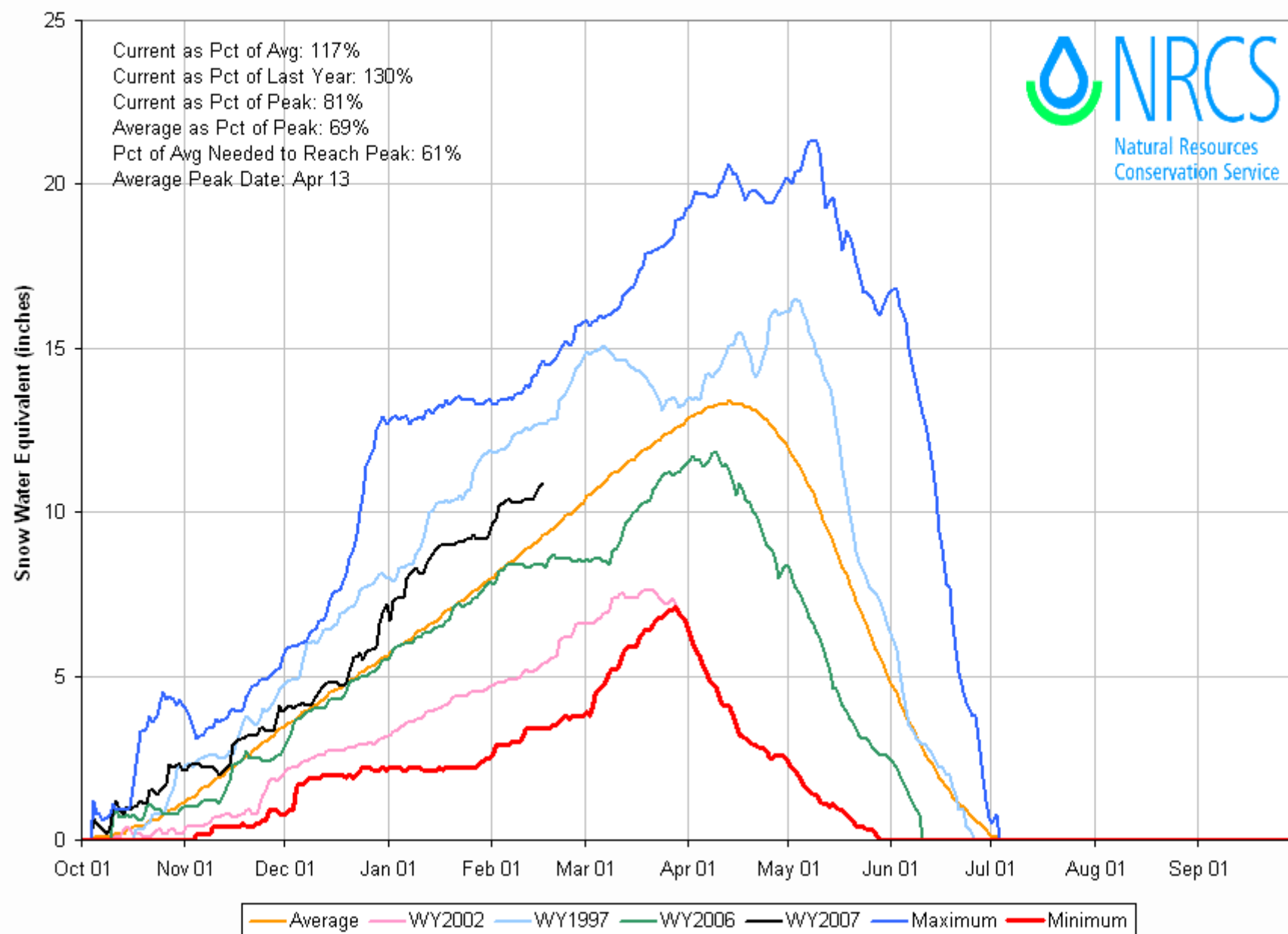
*Provisional Data
Subject to Revision*



Current as of Feb 16, 2007

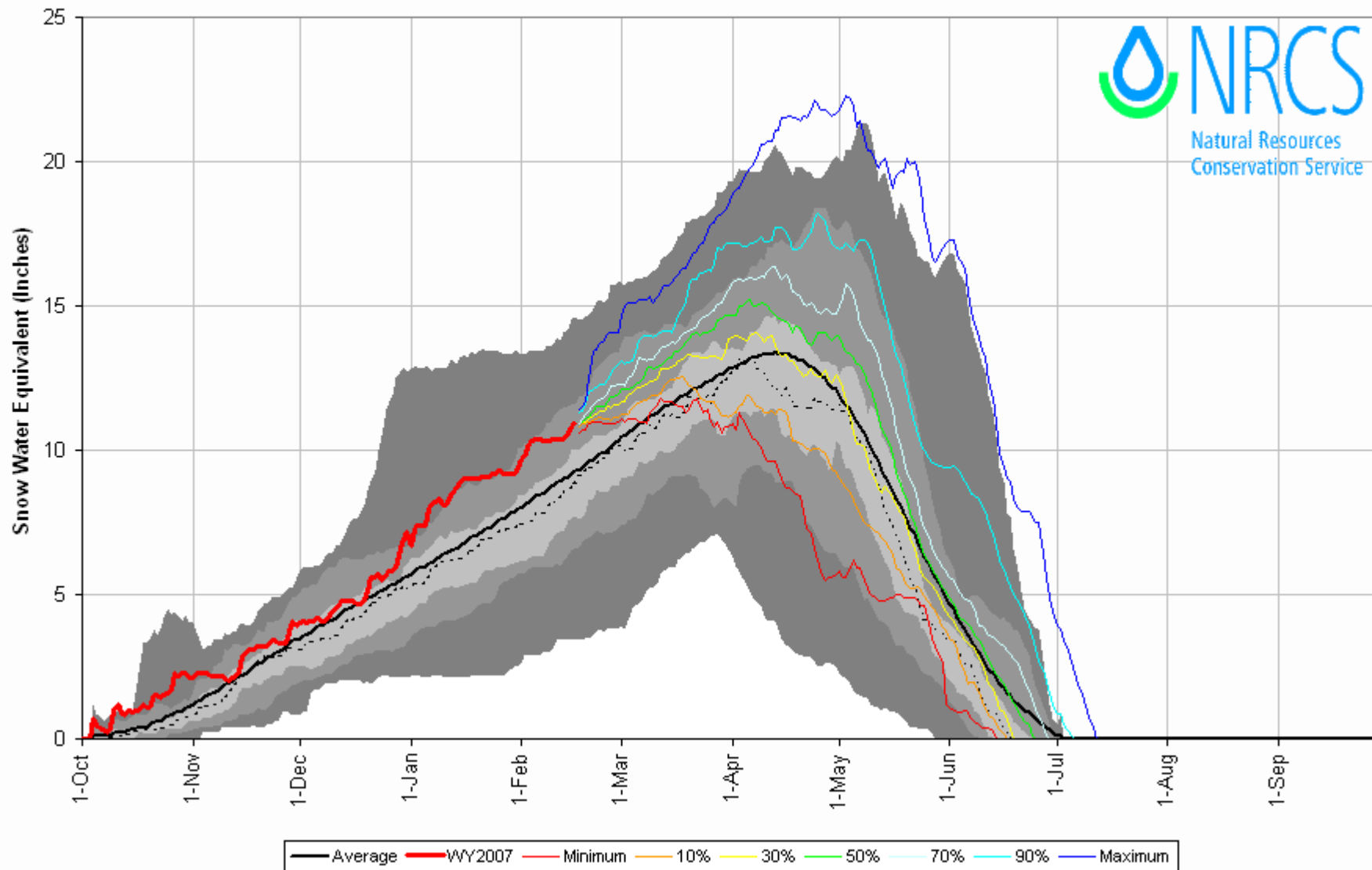
Arkansas River Basin High/Low Snowpack Summary

Based on Provisional SNOTEL data as of Feb 16, 2007



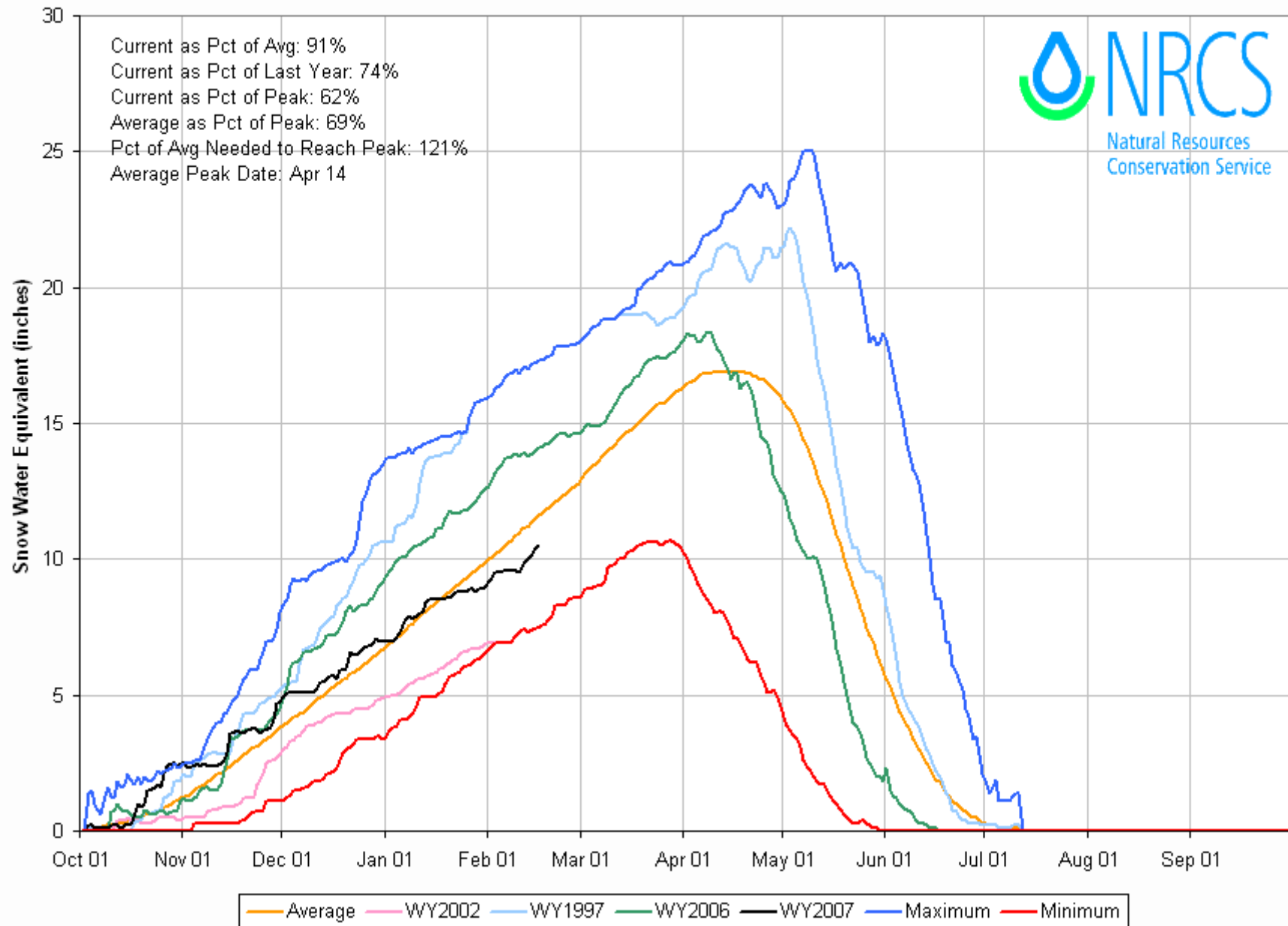
Arkansas River Basin with Non-Exceedence Projections

Based on Provisional SNOTEL Data as of Feb 16, 2007

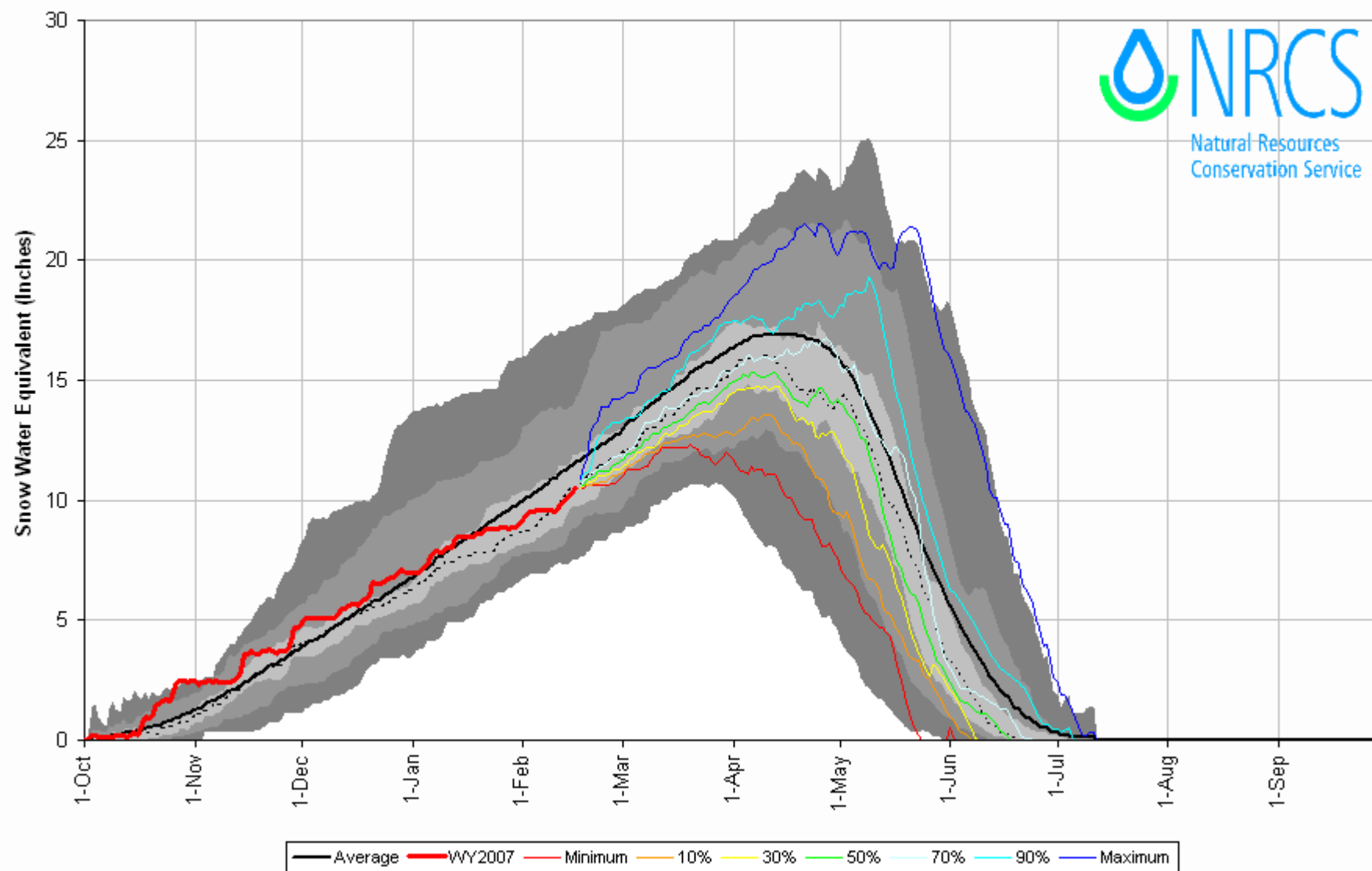


Upper Colorado River Basin High/Low Snowpack Summary

Based on Provisional SNOTEL data as of Feb 16, 2007

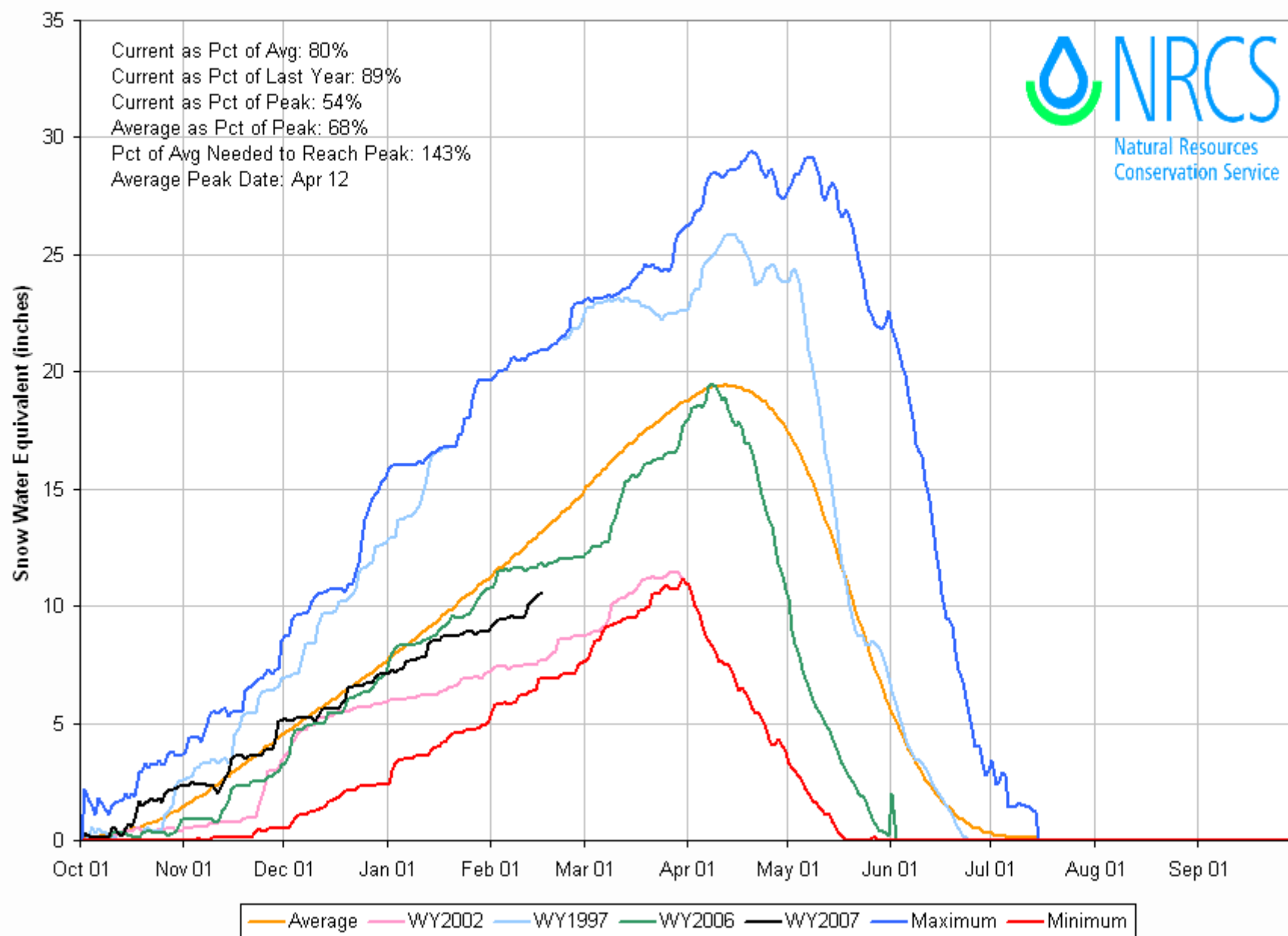


Based on Provisional SNOTEL Data as of Feb 16, 2007

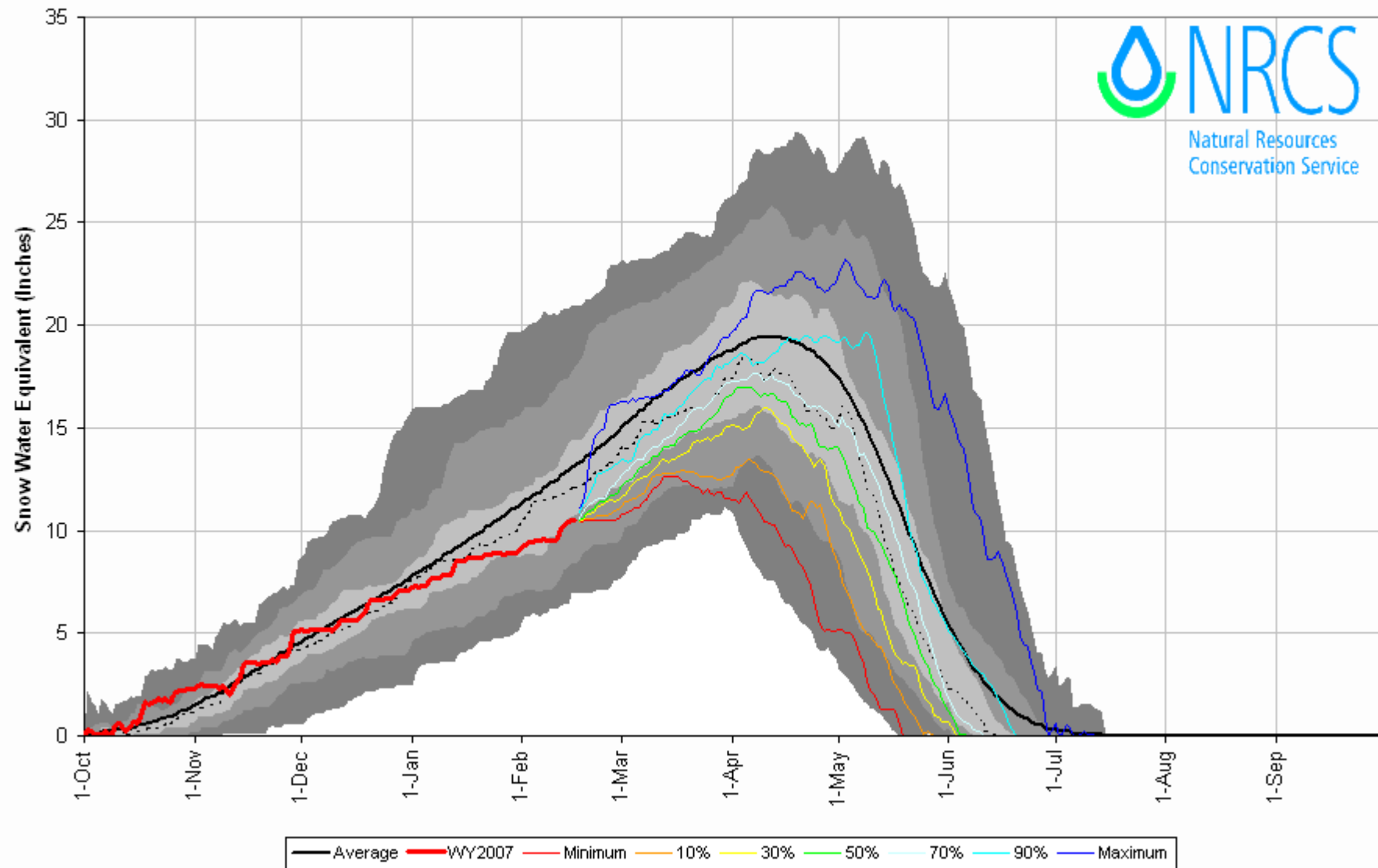


Gunnison River Basin High/Low Snowpack Summary

Based on Provisional SNOTEL data as of Feb 16, 2007

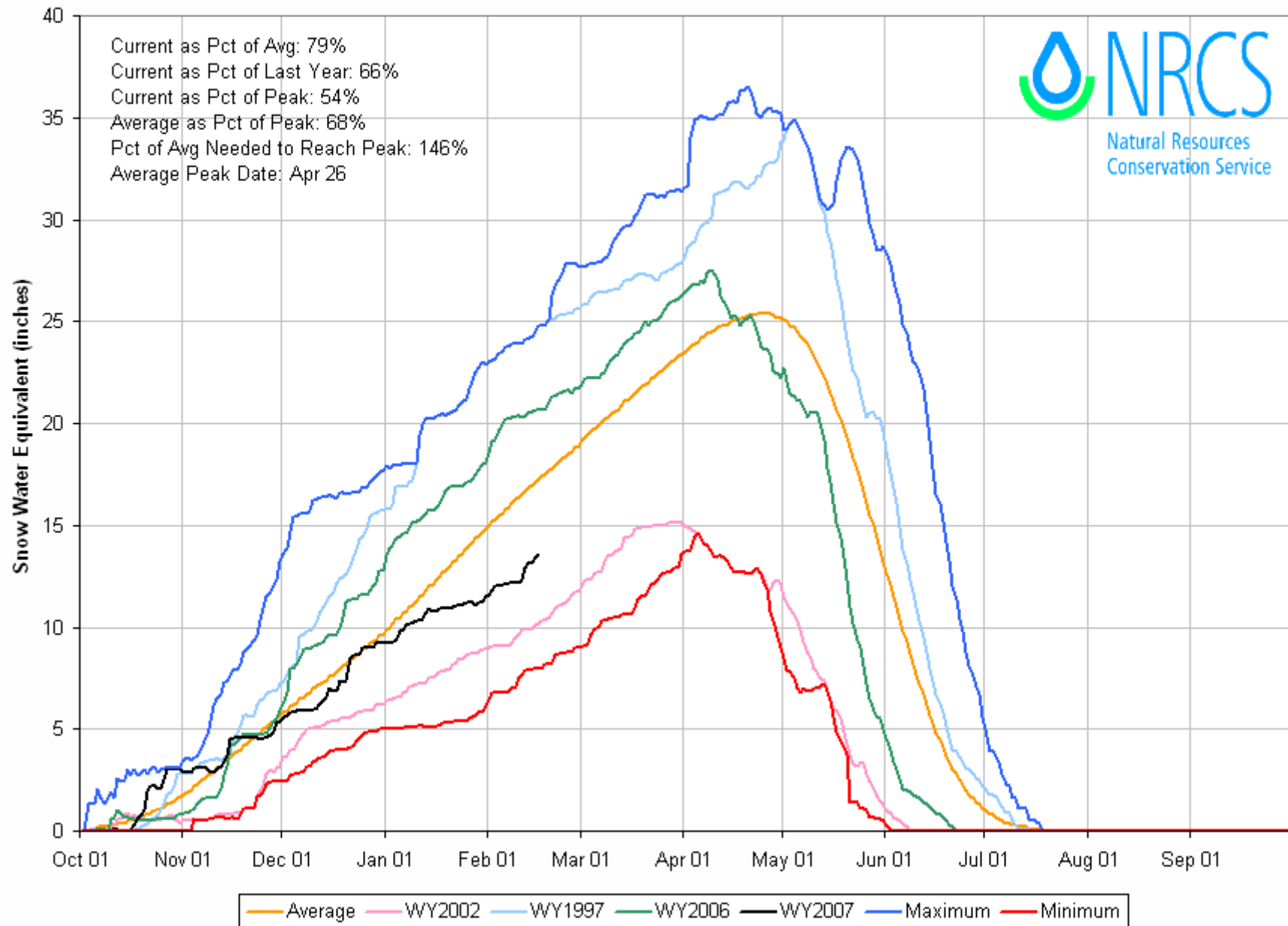


Based on Provisional SNOTEL Data as of Feb 16, 2007



Laramie and North Platte River Basins High/Low Snowpack Summary

Based on Provisional SNOTEL data as of Feb 16, 2007

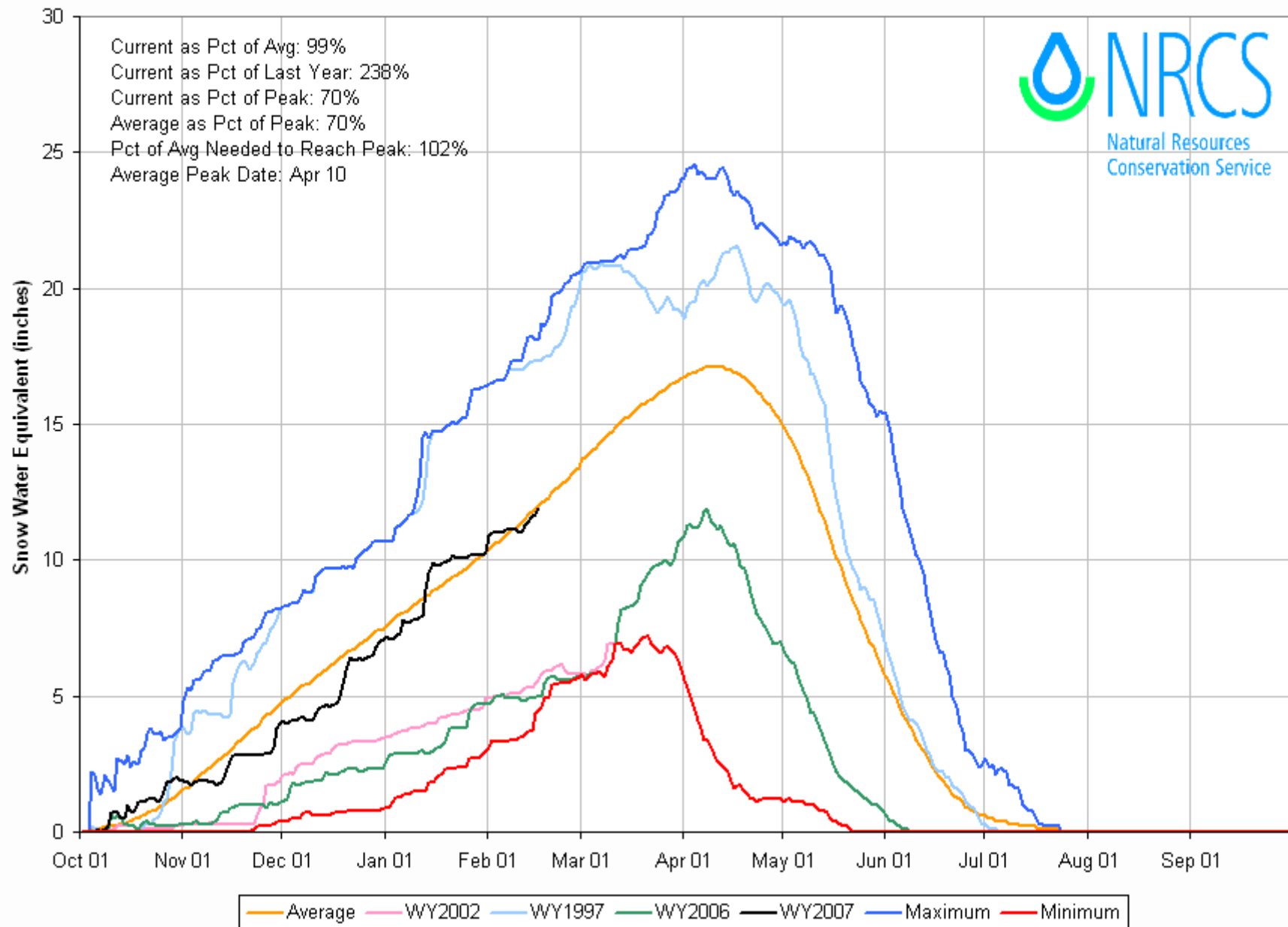


Based on Provisional SNOTEL Data as of Feb 16, 2007

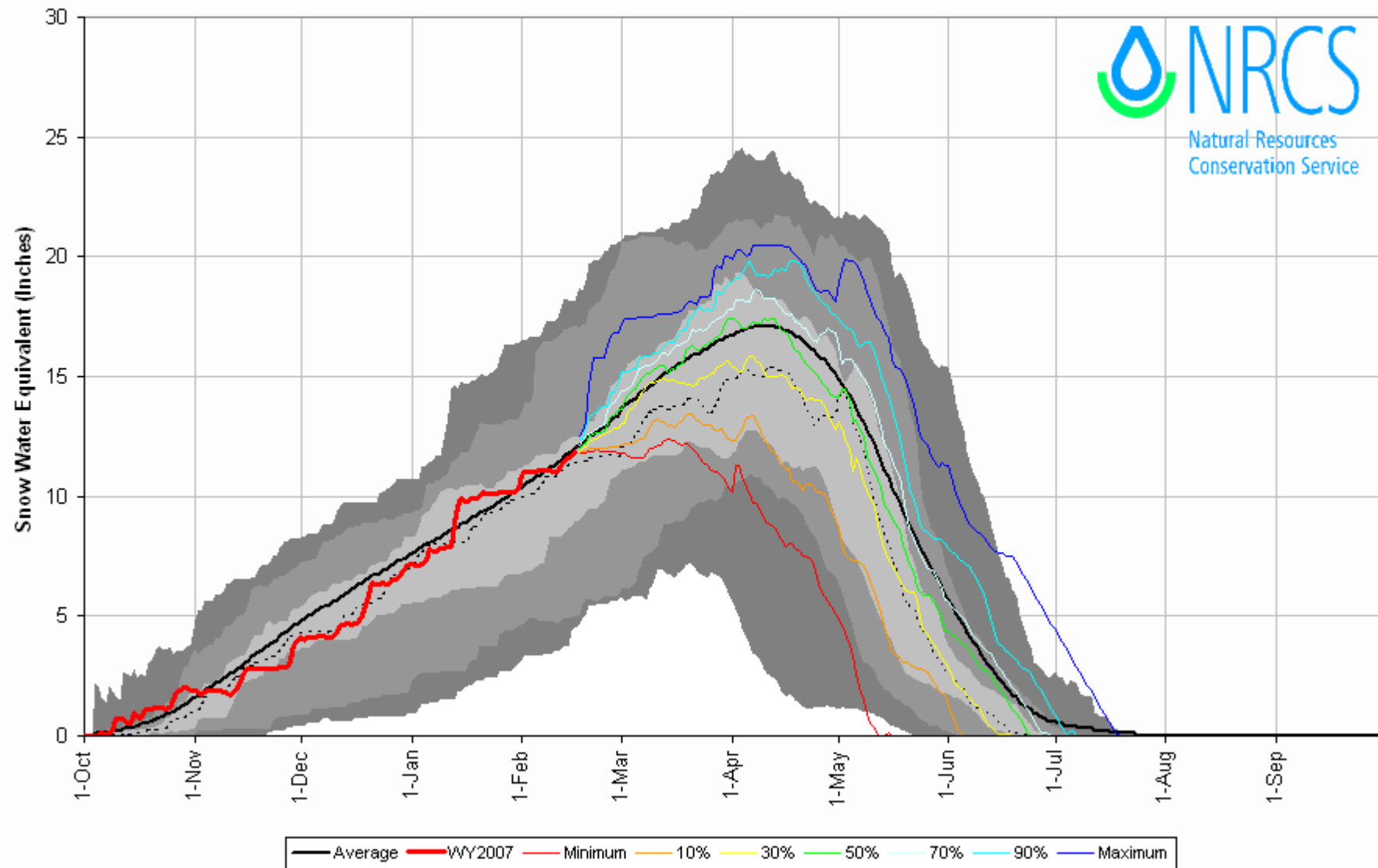


Upper Rio Grande Basin High/Low Snowpack Summary

Based on Provisional SNOTEL data as of Feb 16, 2007

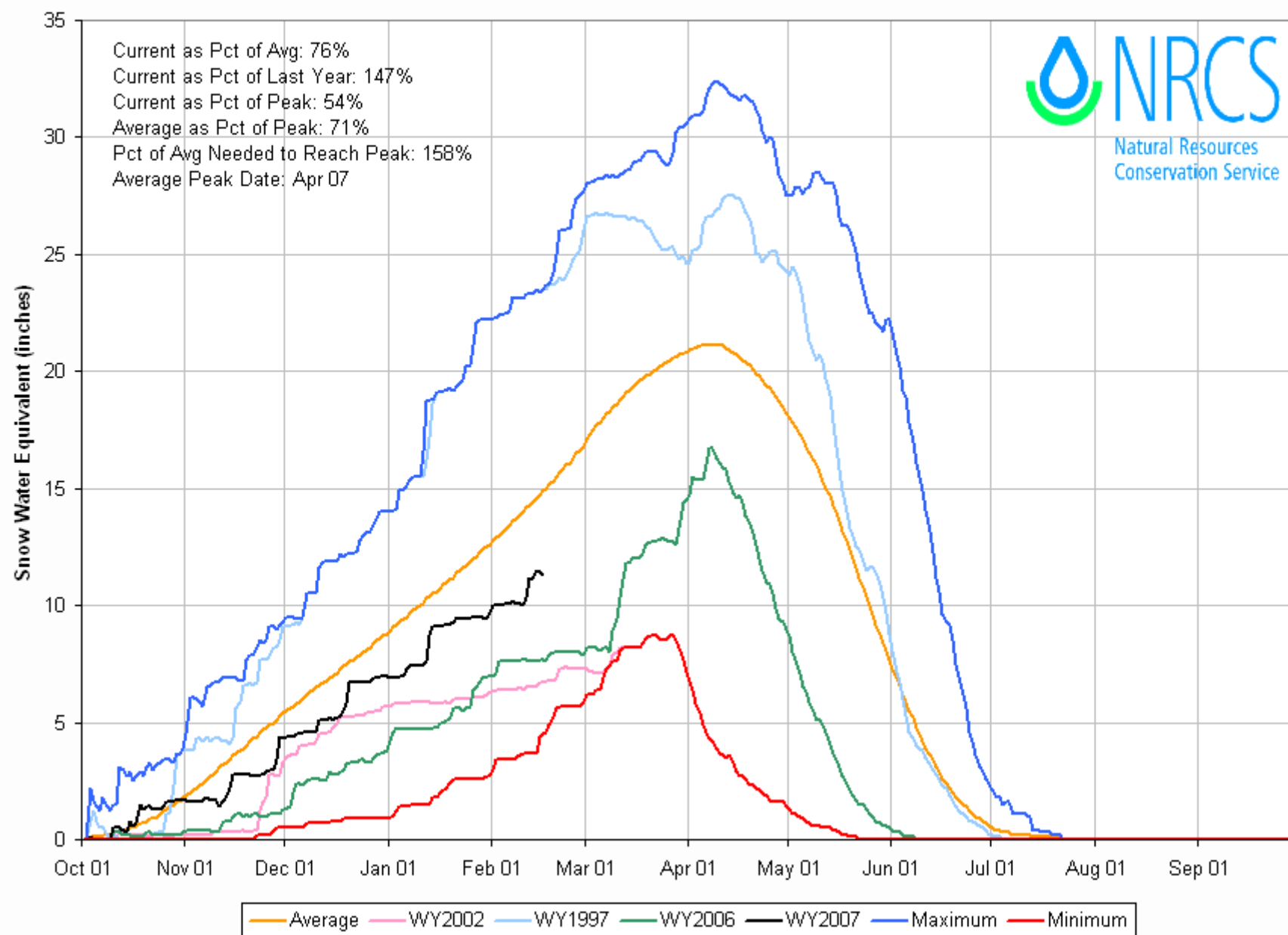


Based on Provisional SNOTEL Data as of Feb 16, 2007



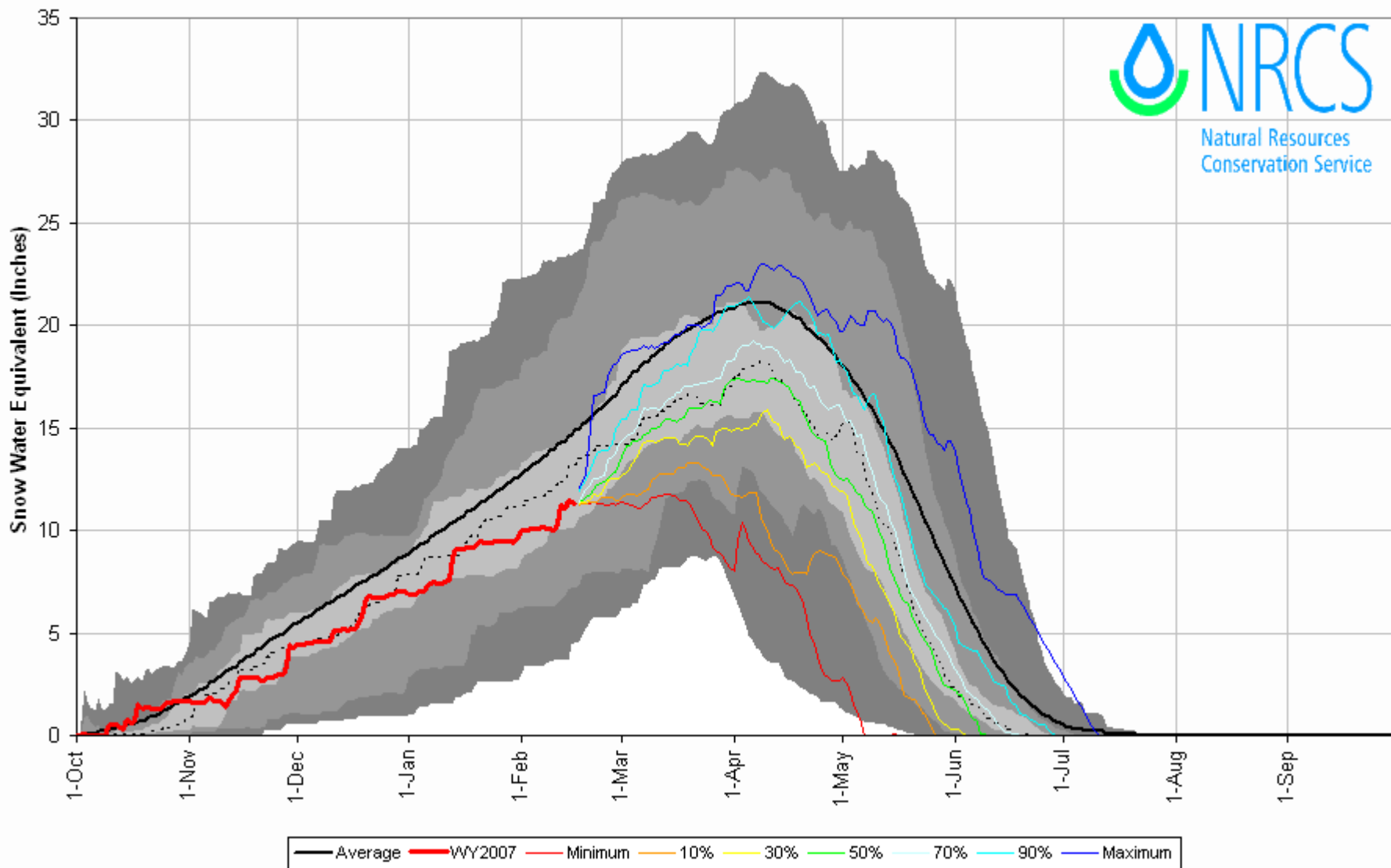
San Miguel, Dolores, Animas & San Juan River Basins High/Low Snowpack Summary

Based on Provisional SNOTEL data as of Feb 16, 2007



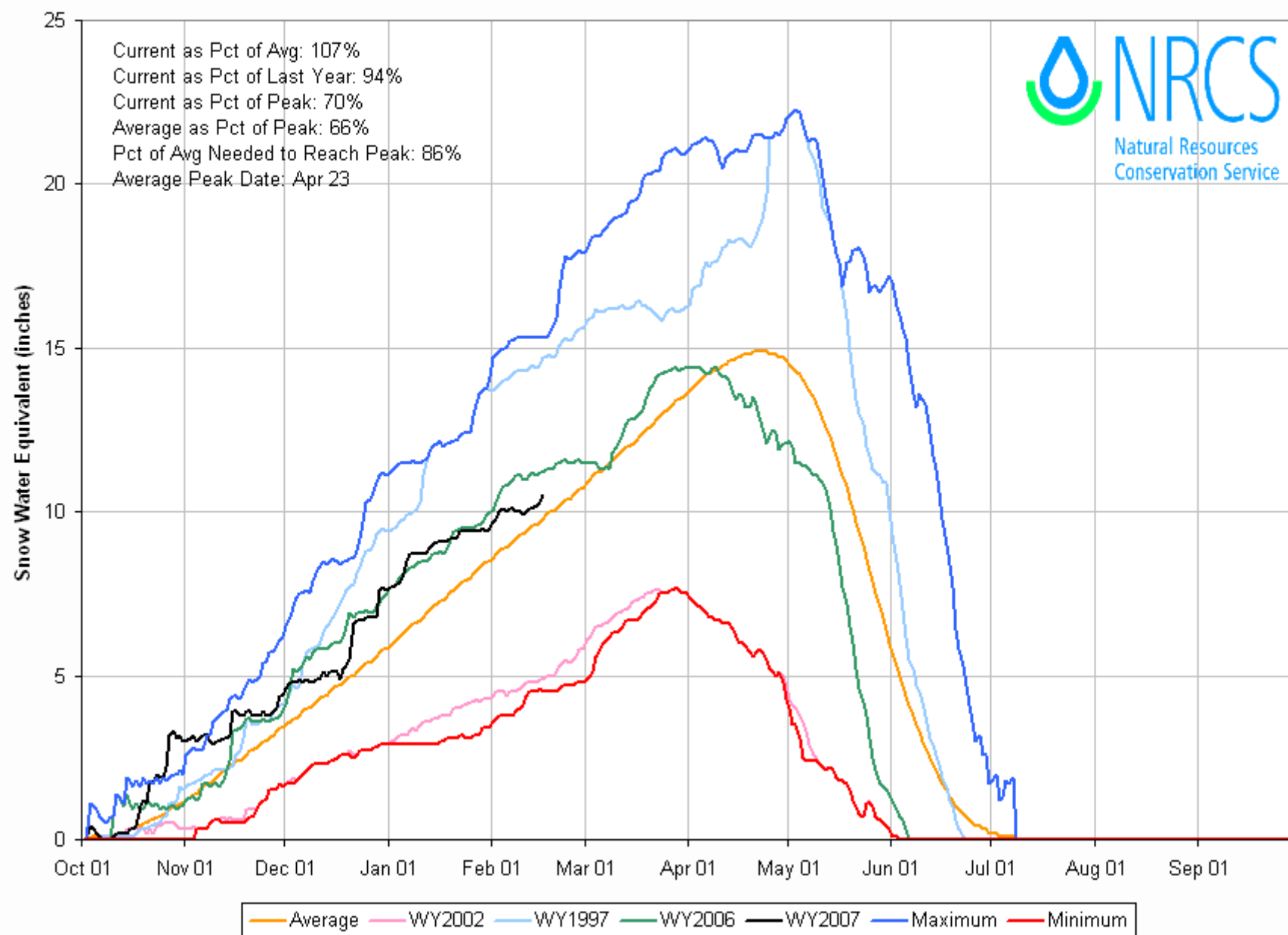
San Miguel, Dolores, Animas & San Juan River Basins with Non-Exceedence Projections

Based on Provisional SNOTEL Data as of Feb 16, 2007

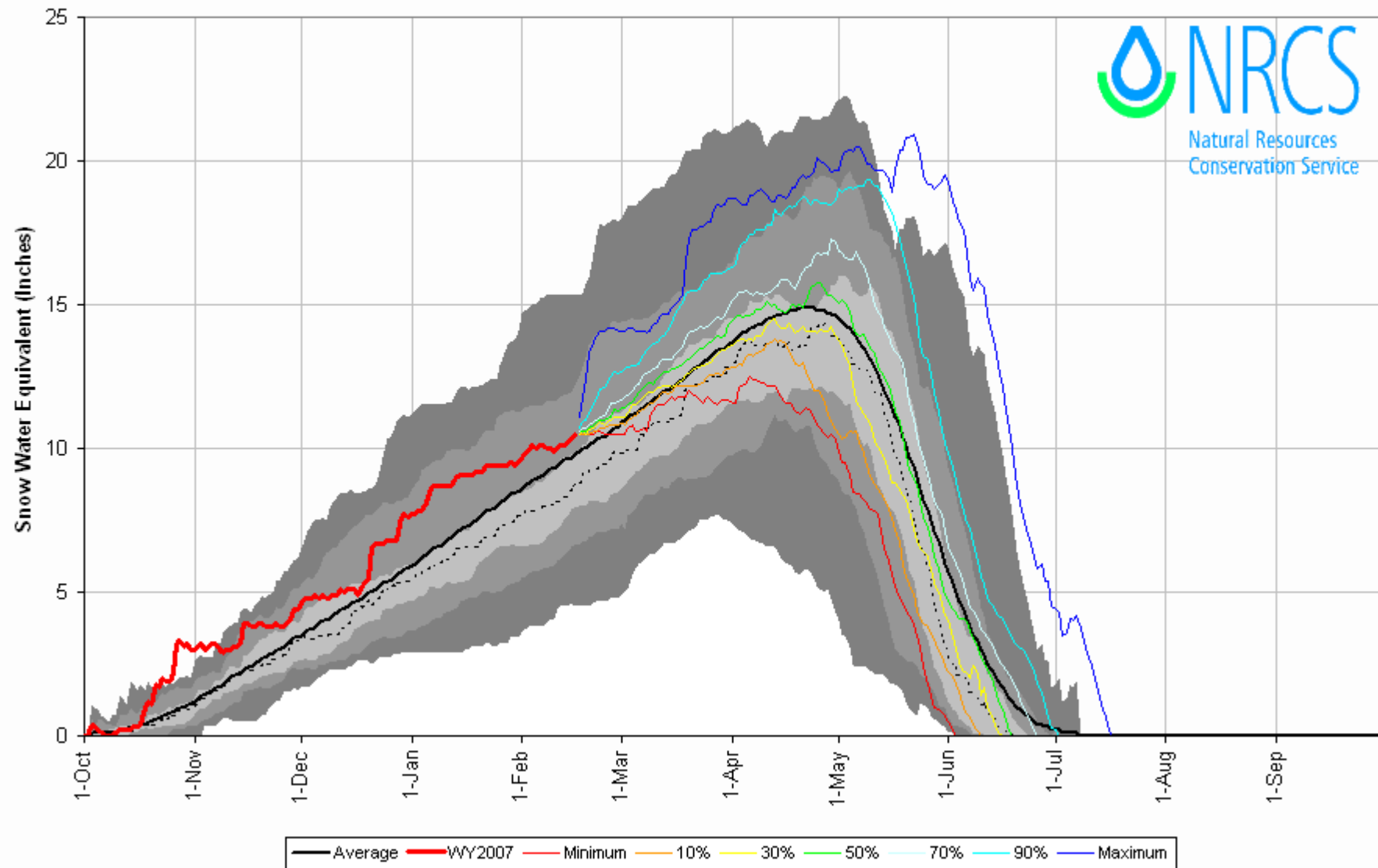


South Platte River Basin High/Low Snowpack Summary

Based on Provisional SNOTEL data as of Feb 16, 2007

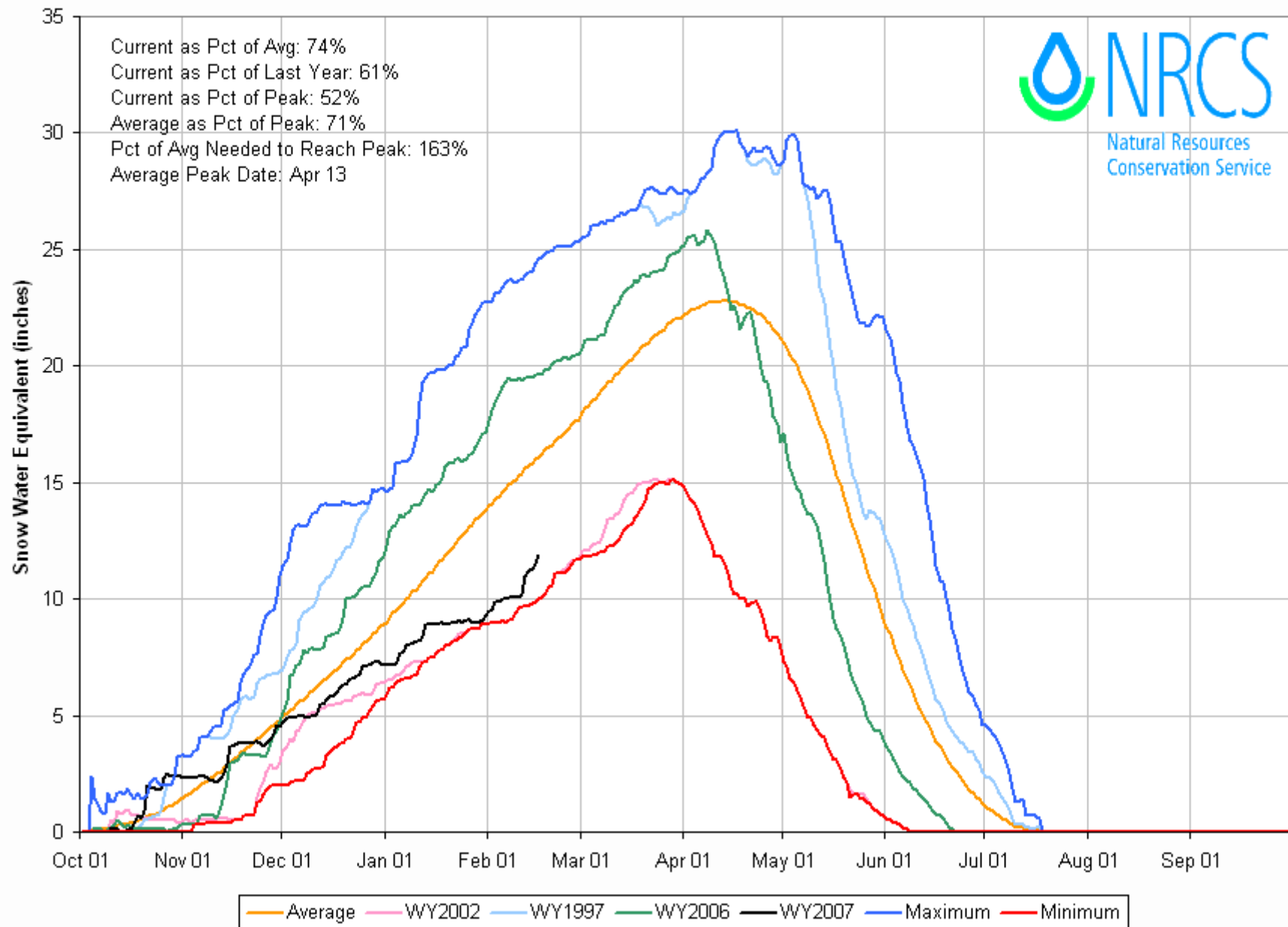


Based on Provisional SNOTEL Data as of Feb 16, 2007

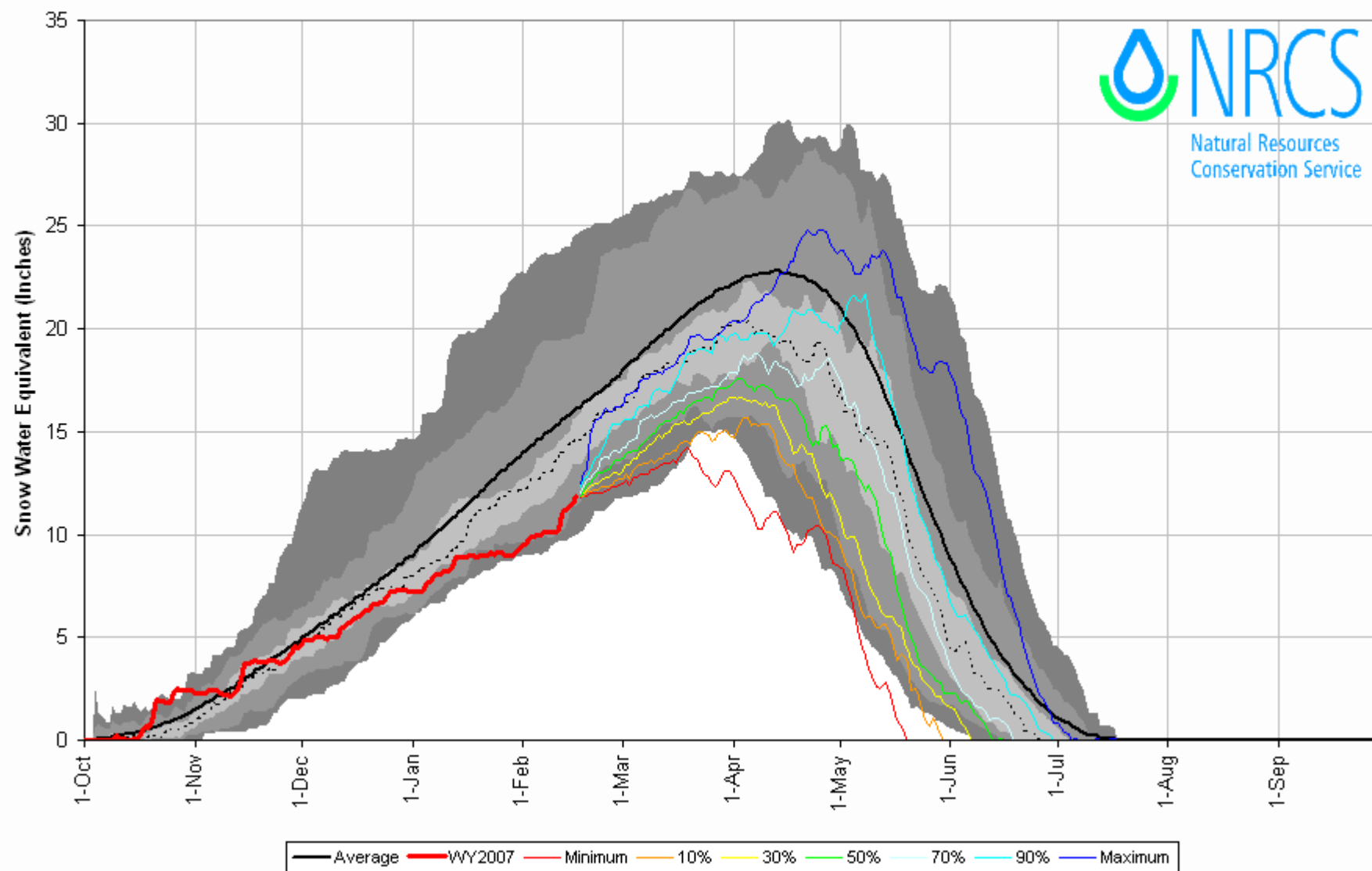


Yampa and White River Basins High/Low Snowpack Summary

Based on Provisional SNOTEL data as of Feb 16, 2007

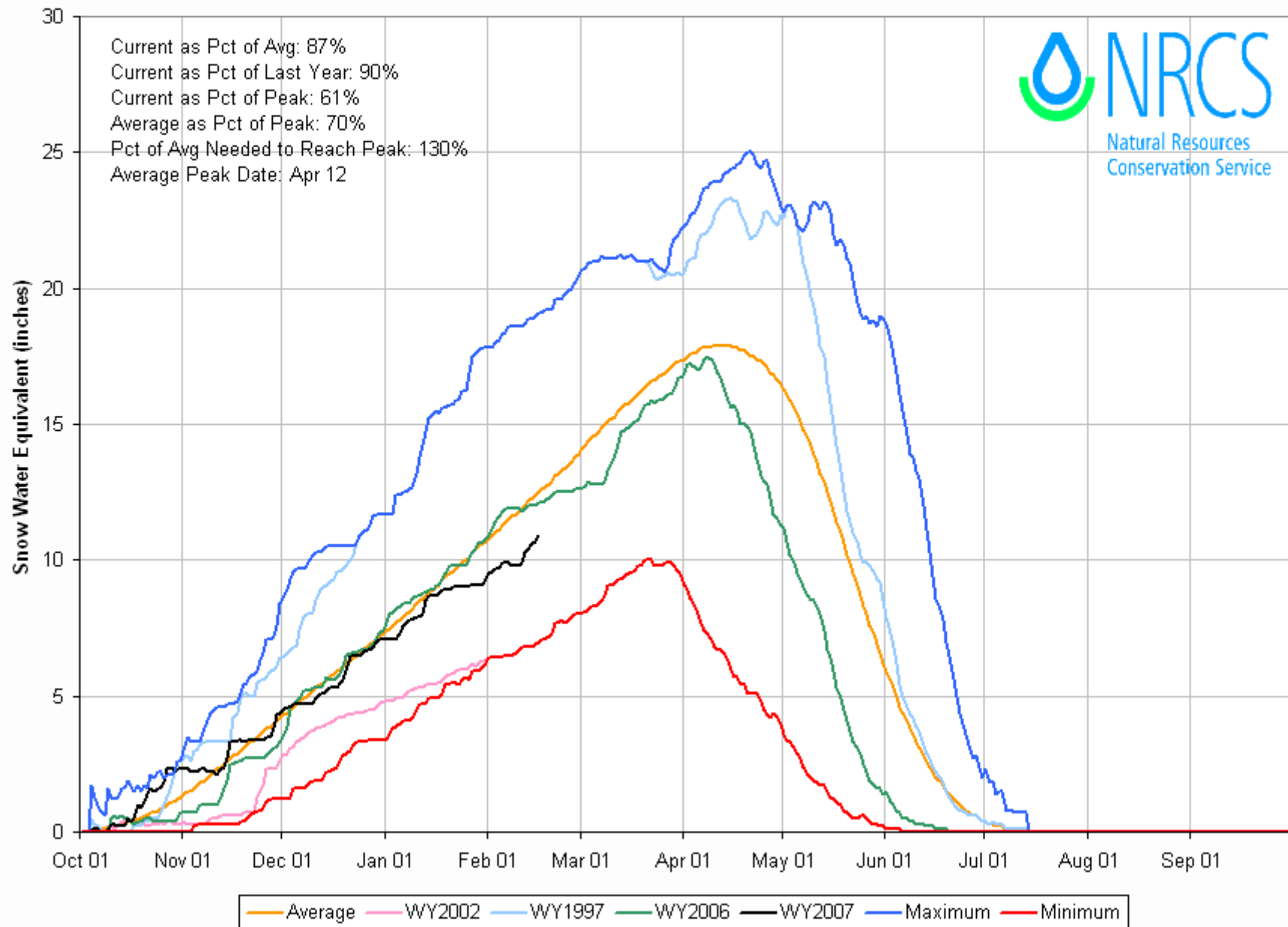


Based on Provisional SNOTEL Data as of Feb 16, 2007



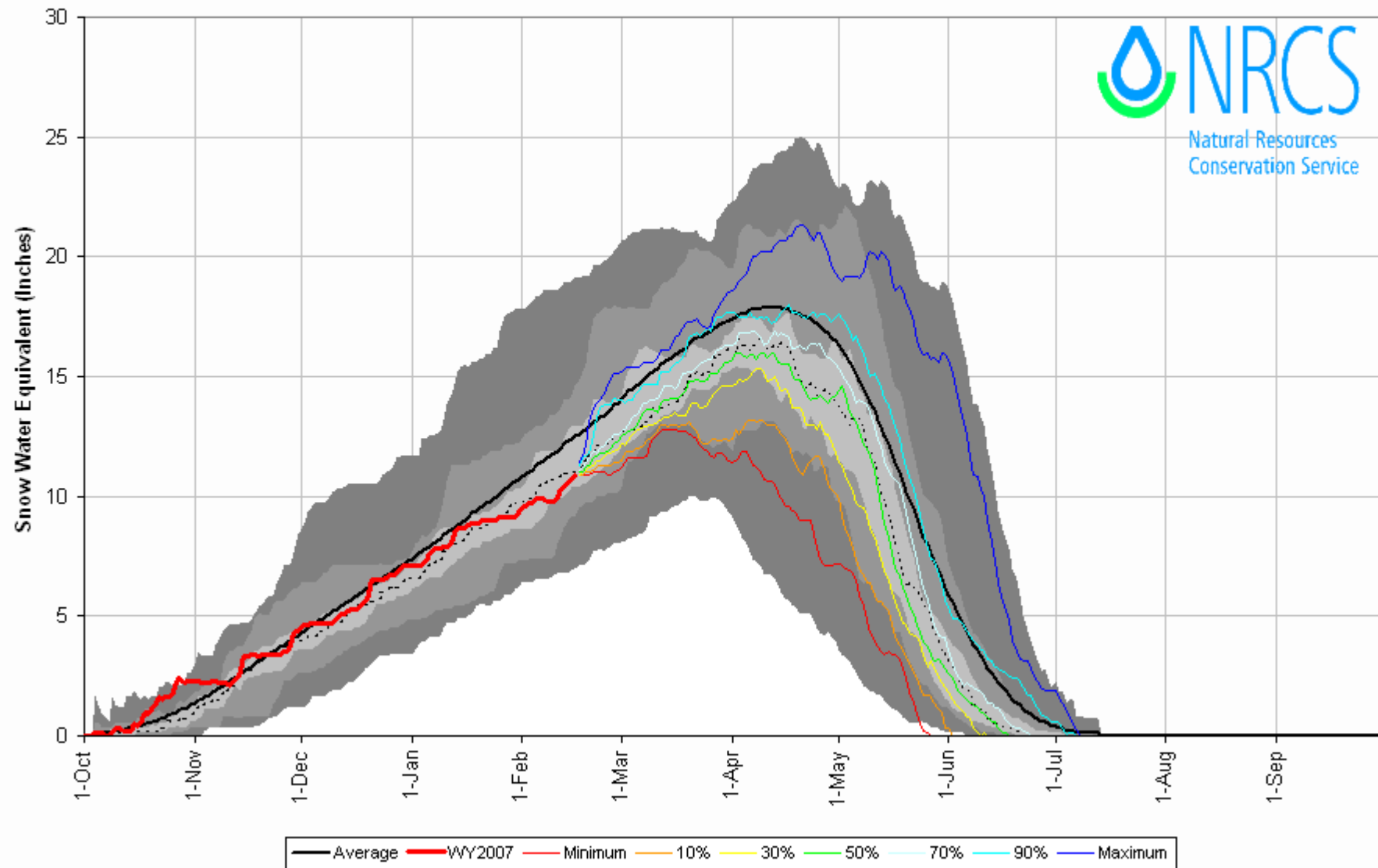
Colorado Statewide High/Low Snowpack Summary

Based on Provisional SNOTEL data as of Feb 16, 2007



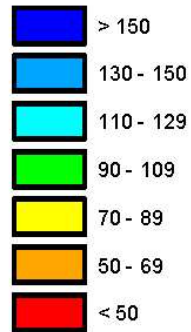
Colorado State-Wide with Non-Exceedence Projections

Based on Provisional SNOTEL Data as of Feb 16, 2007

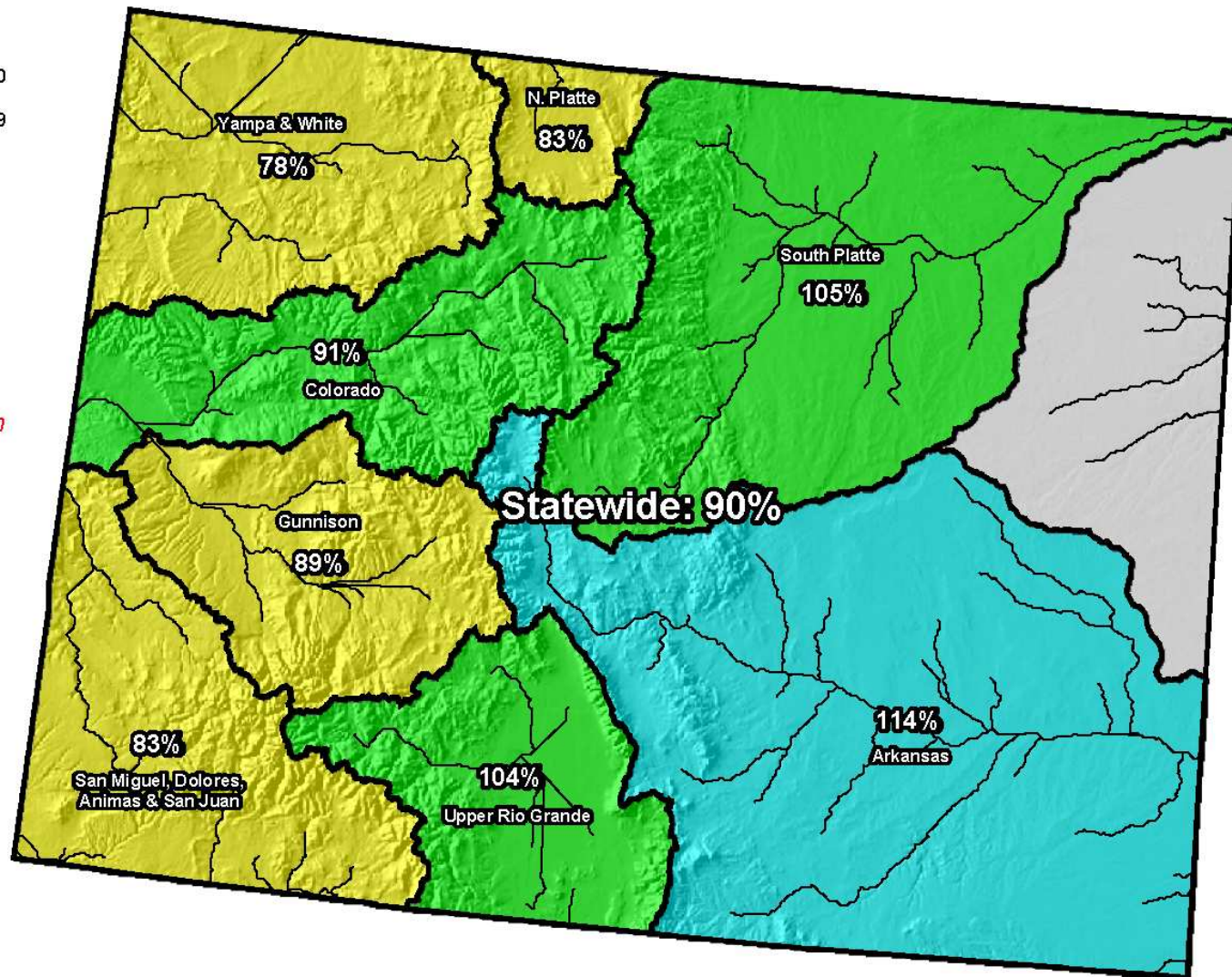


Colorado SNOTEL April 1 Snowpack Projection Map*

Percent of Average



*Provisional Data
Subject to Revision*



Current as of Feb 16, 2007

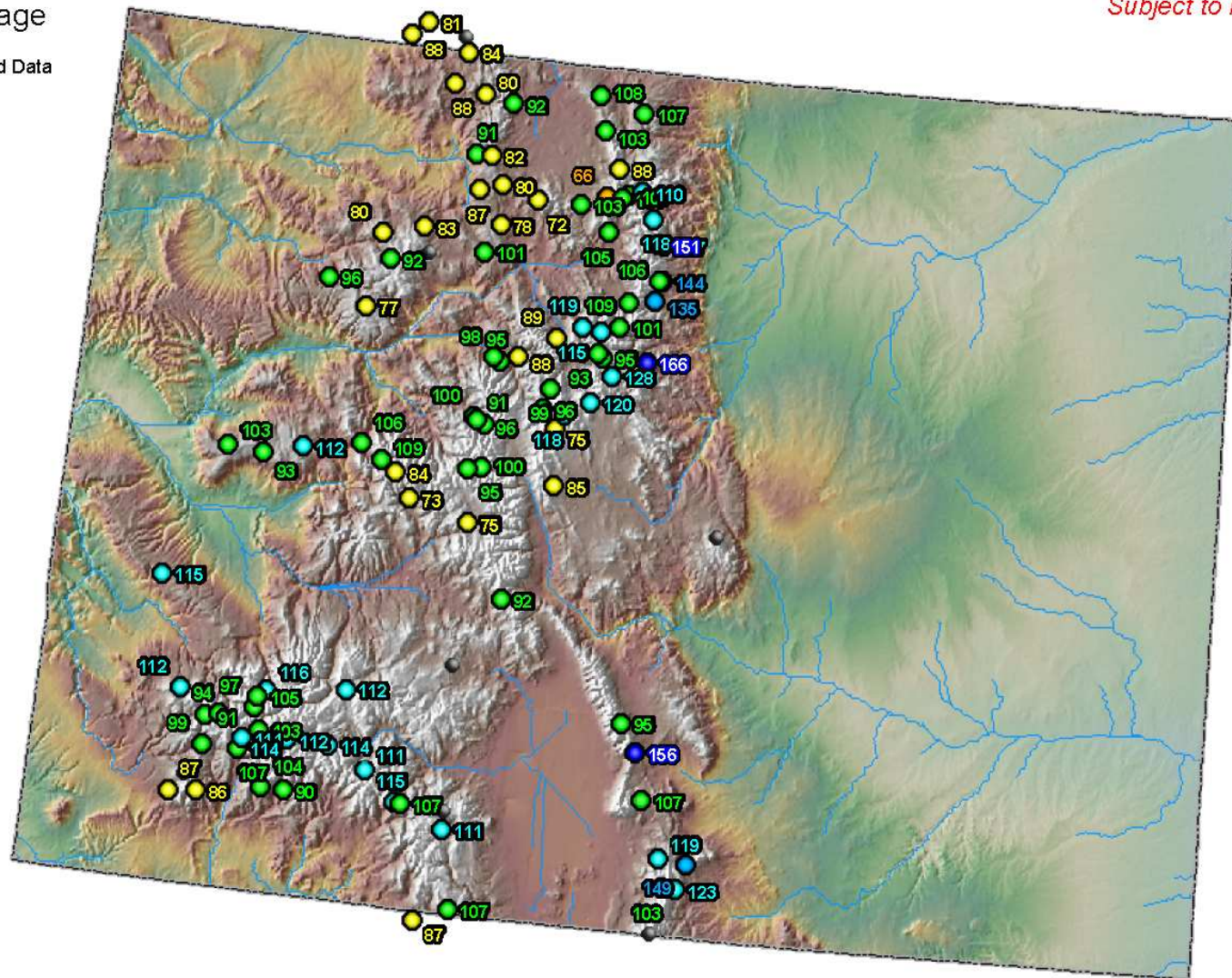
*Based on 50% Non-Exceedence Projections

Colorado SNOTEL Year-to-Date Precipitation

Legend
Percent of Average

- Missing or Invalid Data
- < 50
- 50 - 69
- 70 - 89
- 90 - 109
- 110 - 129
- 130 - 149
- >= 150

*Provisional Data
Subject to Revision*



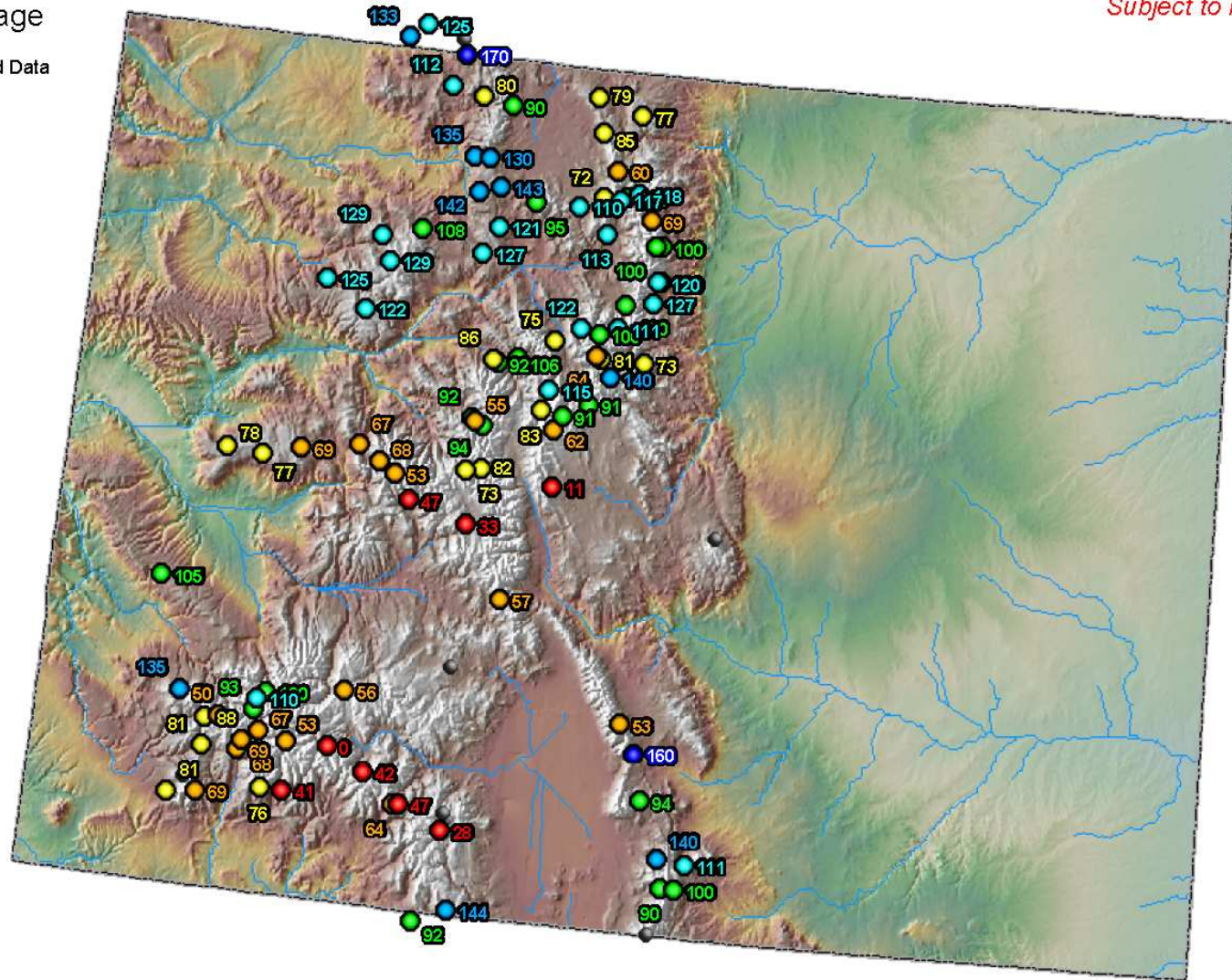
Current as of Feb 16, 2007

Colorado SNOTEL Month-to-Date Precipitation

Legend
Percent of Average

- Missing or Invalid Data
- < 50
- 50 - 69
- 70 - 89
- 90 - 109
- 110 - 129
- 130 - 149
- ≥ 150

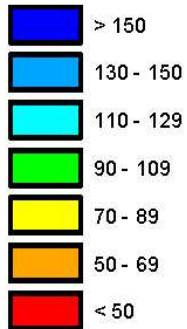
*Provisional Data
Subject to Revision*



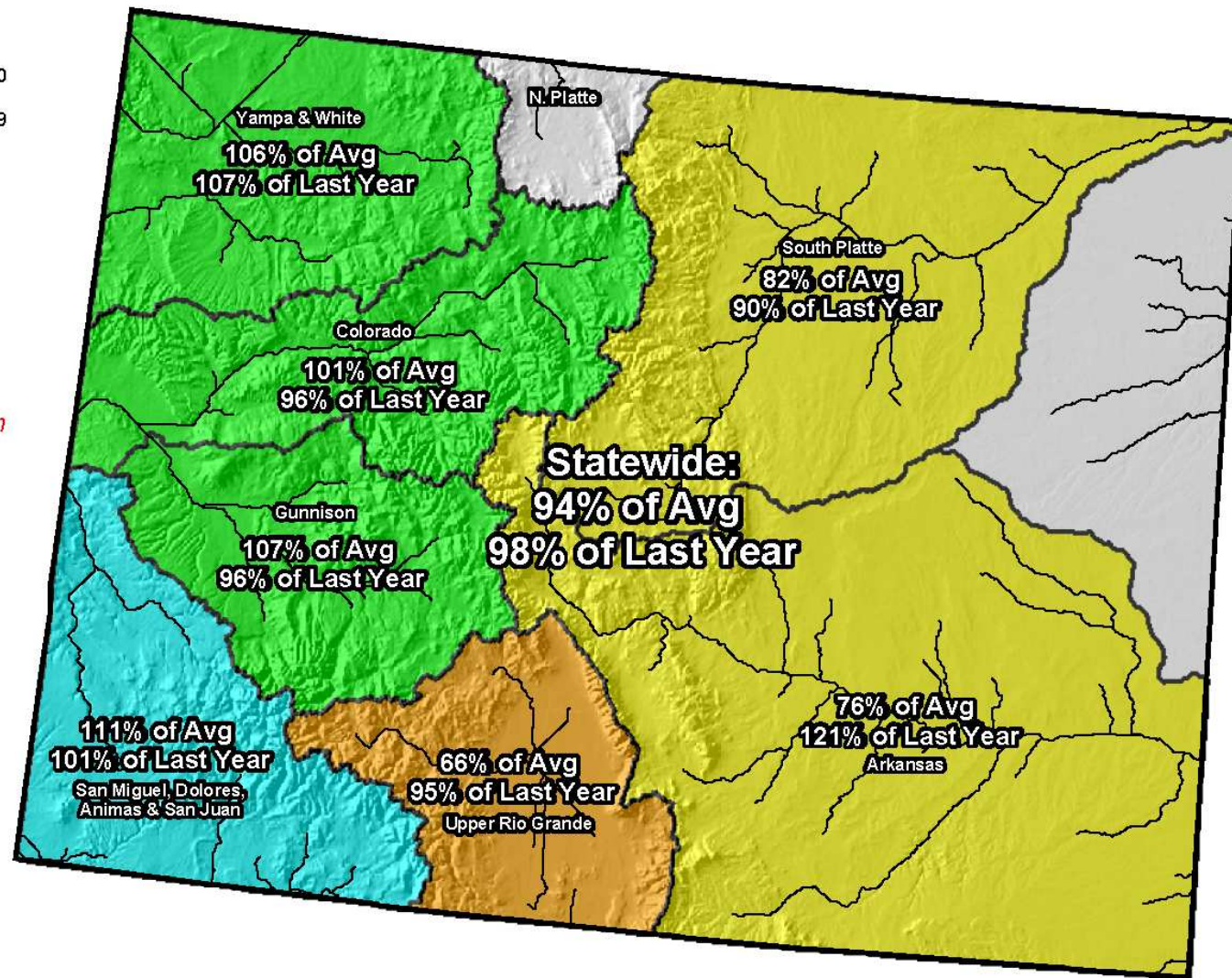
Current as of Feb 16, 2007

Colorado Reservoir Storage Map

Percent of Average

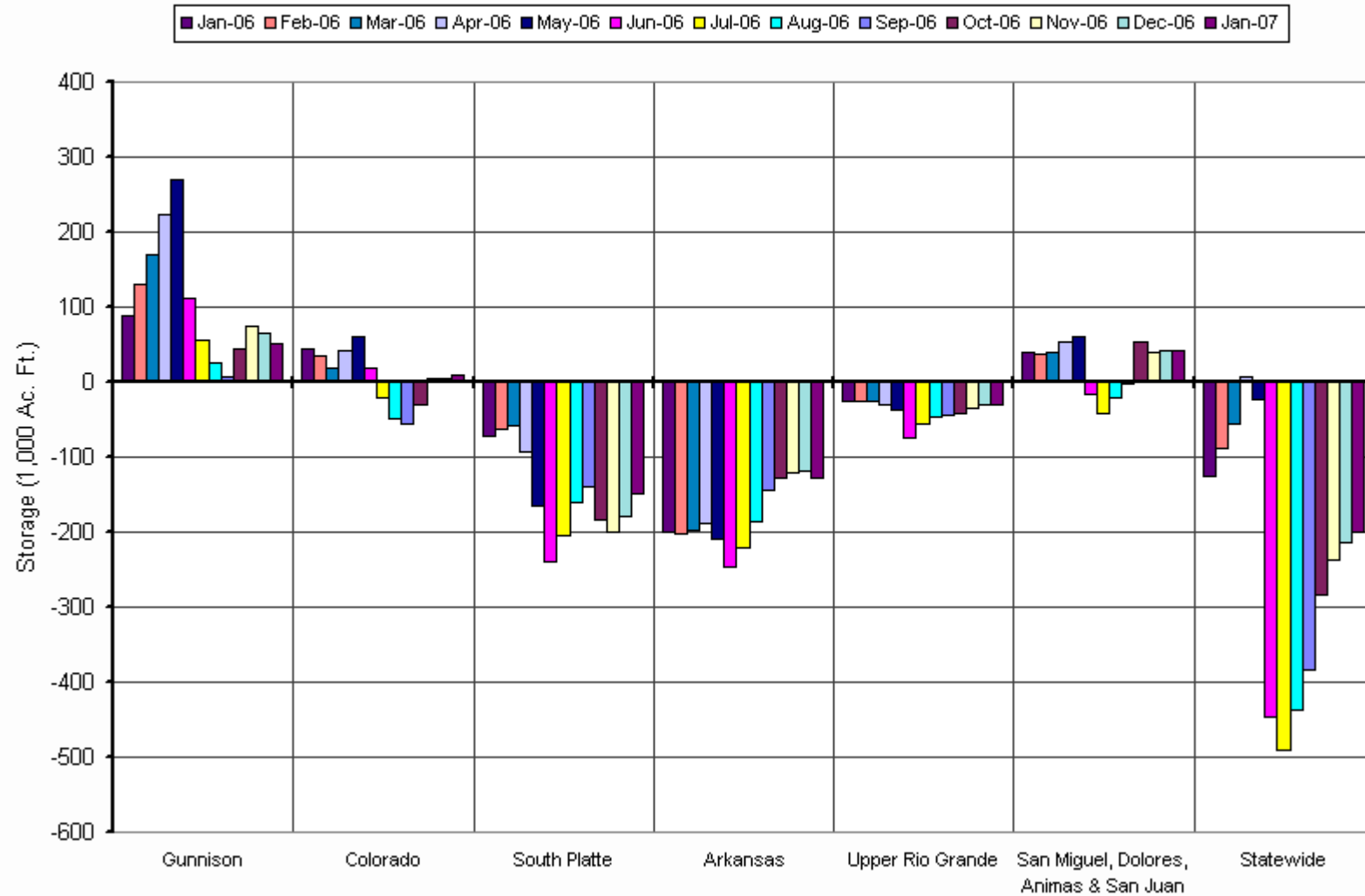


*Provisional Data
Subject to Revision*



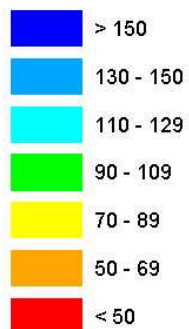
End of January 2007

COLORADO RESERVOIR STORAGE End-of-Month Departure from Average

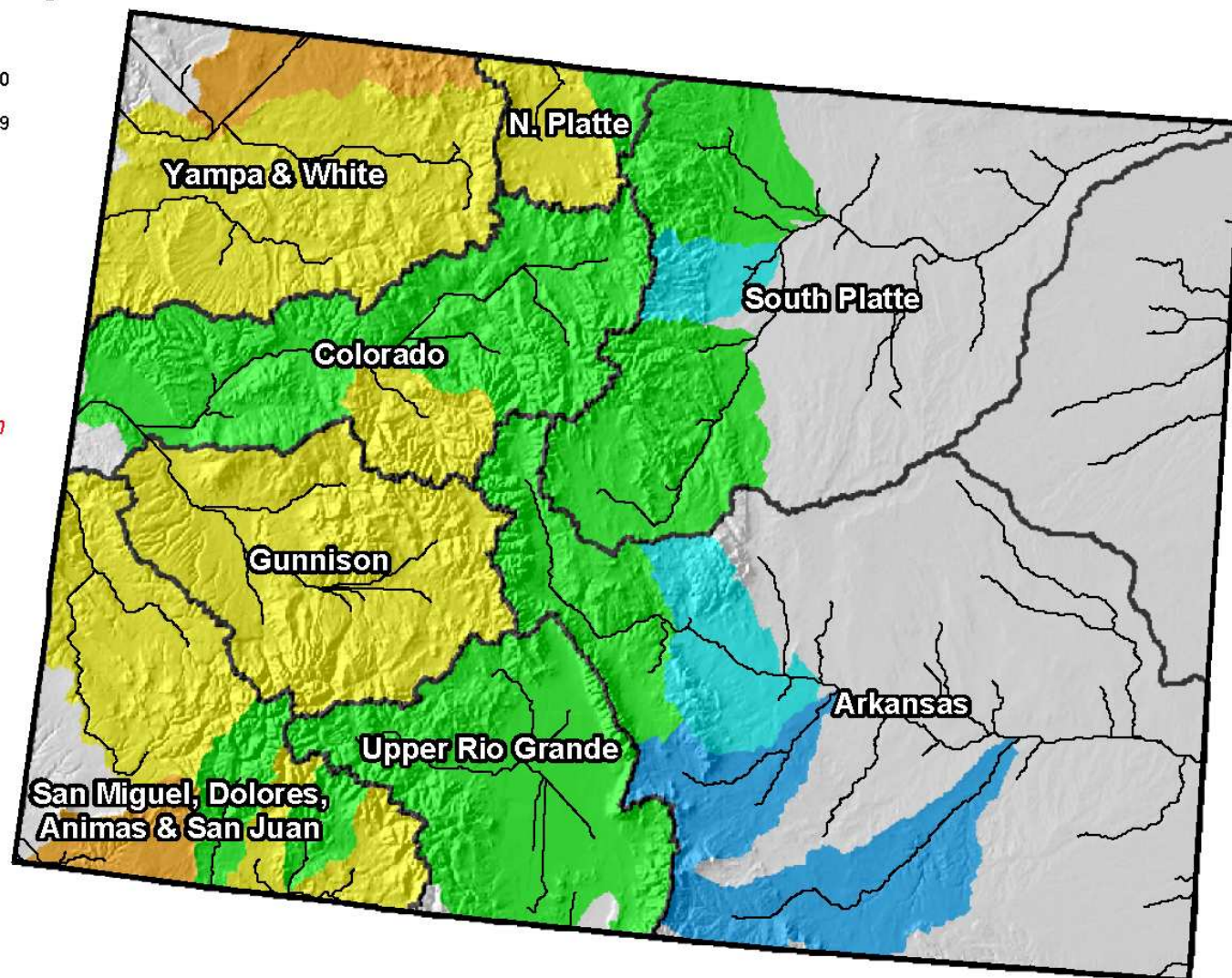


Colorado Streamflow Forecast Map

Percent of Average



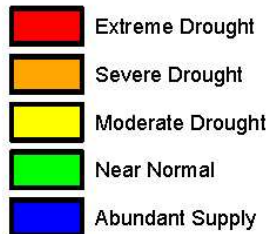
*Provisional Data
Subject to Revision*



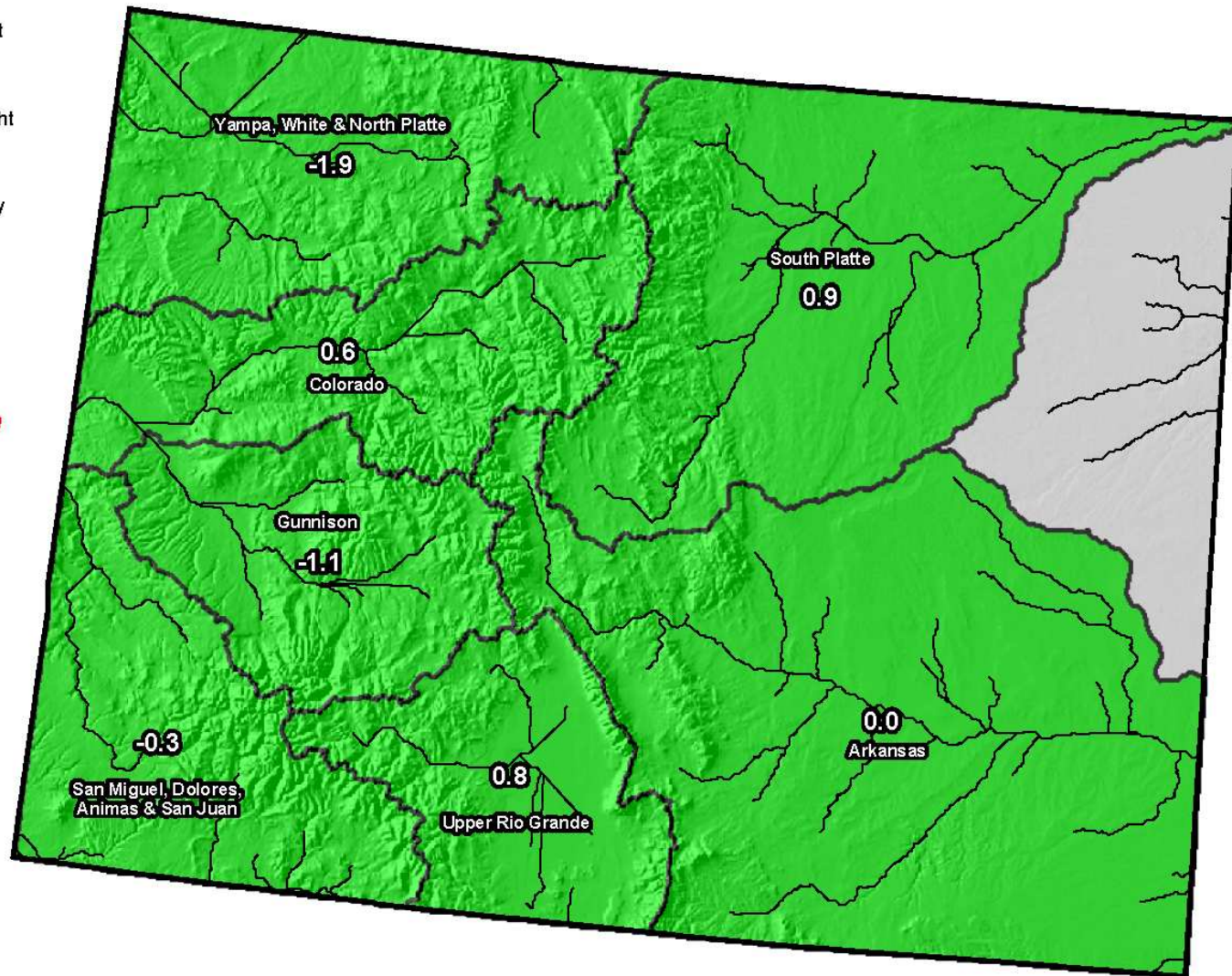
Current as of February 1, 2007

Colorado Surface Water Supply Index (SWSI) Map

Legend



*Provisional Data
Subject to Revision*



Current as of February 1, 2007

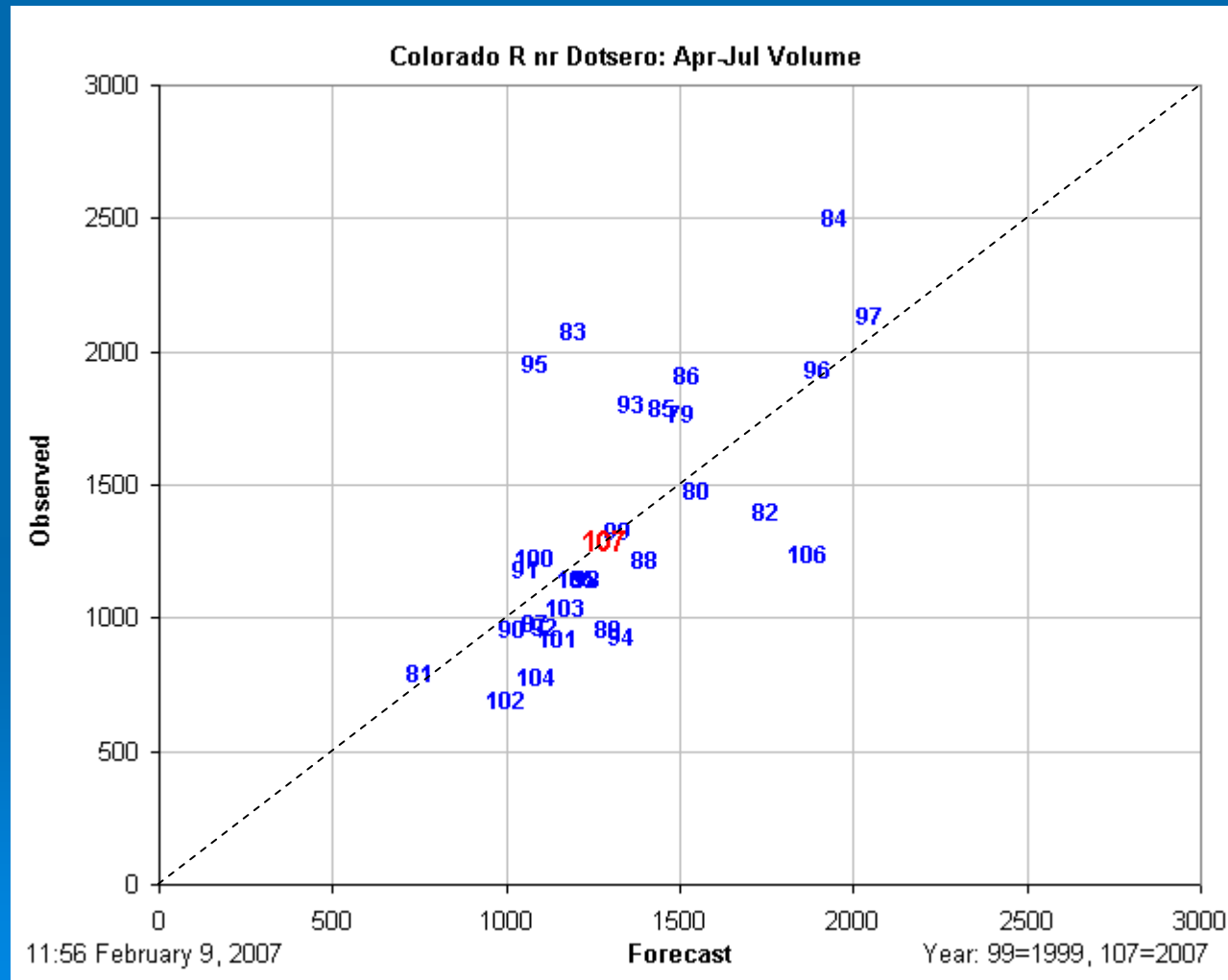
New Experimental Daily Streamflow Forecasts

Available on-line, at:

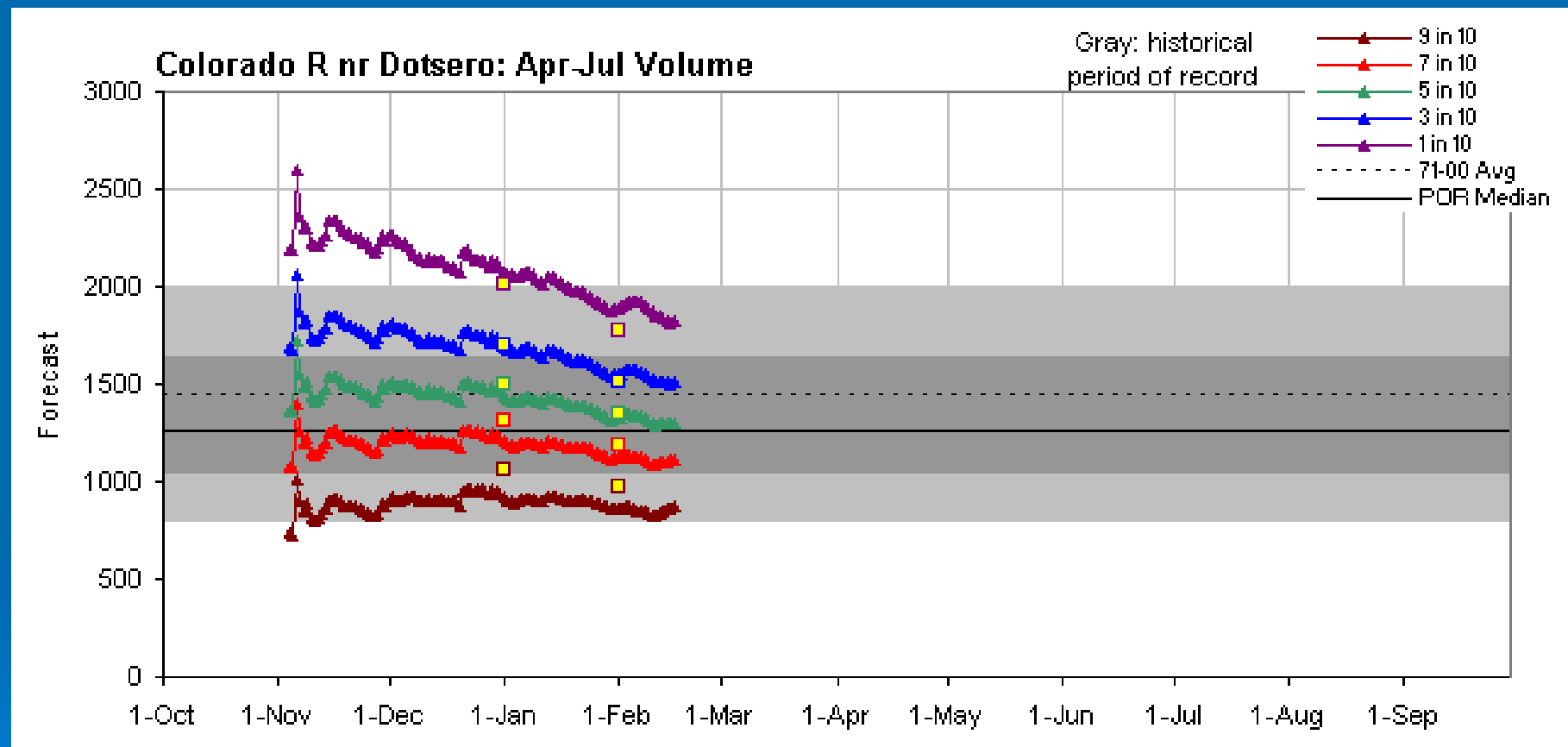
http://www.co.nrcs.usda.gov/snow/fcst/site/current/daily/maps_graphs/daily_forecasts.html

- ❄ Three graphical forecast products per forecast point
- ❄ Completely automated uses hydroclimatic data collected by the SNOTEL and USGS data networks
- ❄ Unofficial forecasts on an experimental basis
- ❄ Most useful as a guide to basin trends between monthly forecasts or assessing the impacts of storm events subsequent to forecasts.
- ❄ Currently 30 forecast points around Colorado with additional points planned.

Scatter Graph of Forecast -vs- Observed For Each Water Year



Daily Exceedence Forecasts with Historical Bounds



Guidance (as a percent of normal) -vs- Skill

